



FOUR SEASONS RESORT
Whistler

QUICK REFERENCE GUIDE

Last updated: March 19, 2009

For up-to-date information please view the web site or contact the hotel directly.

4591 Blackcomb Way
Whistler, British Columbia
Canada V0N 1B4
Tel. 1 (604) 935-3400
Fax. 1 (604) 935-3455

www.fourseasons.com/whistler

QUICK REFERENCE GUIDE



FOUR SEASONS RESORT *Whistler*

4591 Blackcomb Way
Whistler, British Columbia, Canada V0N 1B4
Tel. 1 (604) 935-3400
Fax: 1 (604) 935-3455

www.fourseasons.com

- ➔ Vancouver International Airport: 2.5 hours (130 km/80 mi.)
- ➔ Pemberton Airport: 25 minutes (40 km/25 mi.)
- ➔ Whistler Municipal Heliport: 10 minutes (8 km/5 mi.)



PROPERTY

Nestled beneath Blackcomb Mountain's snow-capped peak, Four Seasons Resort Whistler offers unsurpassed comfort in an ultimate all-season playground, with easy access to world-class skiing. Close to Blackcomb's ski lifts and a short walk or shuttle to Whistler Mountain and Whistler Village, the Resort combines the pleasures of a winter wonderland with superb golf and wilderness explorations in the warmer months.

Its cosy wood interiors, with gas fireplaces and a private balcony or step-out balcony in most rooms, evoke the laid-back charm of an idyllic alpine getaway. Inspired dining in an all-day bistro (or on its year-round, open-air terrace), a full-service spa, complimentary fitness facilities that include a heated outdoor pool and a wide range of recreational activities make the Resort a perfect base for exploring an extraordinary destination.

With 273 guest rooms, suites and town houses, and versatile meeting space for functions of up to 350 people, the Resort sets exciting new standards

for active vacations, romantic getaways and exclusive gatherings.

TRANSPORTATION

Vancouver International Airport is 130 km (80 mi.) and approximately two and a half hours from the Resort, and is served by most major airlines. Pemberton Airport, 40 km (25 mi.) and approximately 25 minutes from the Resort, caters to private jets. The surrounding mountainous terrain restricts service in the winter. Whistler Municipal Heliport is 8 km (5 mi.) and a 10-minute drive from the Resort. It is served by pre-scheduled flights from Vancouver International Airport, and may be used by private or corporate helicopters.

By car, the Resort is a 2-hour, 120-km (75-mi.) drive from downtown Vancouver. Rental cars can be arranged at Vancouver International Airport, as well as at the Resort through the Concierge. Limousine or shuttle service may also be arranged. Valet and self-parking are available at the Resort.

DESTINATION

Directly north of Vancouver, Whistler lies deep within British Columbia's spectacular Coastal Mountains, and is reached via Highway 99, otherwise known as the Sea to Sky Highway, a spectacular route beside fjord-like Howe Sound, flanked by cliffs and towering peaks. The adjoining mountains of Whistler and Blackcomb are widely regarded as North America's best ski mountains and were selected to co-host (with Vancouver) the 2010 Olympic Winter Games. With a yearly average snowfall of 9.14 metres (30 ft.), complemented by extensive snowmaking systems, the two side-by-side mountains of Whistler and Blackcomb encompass more than 2,833 hectares (7,000 acres) of skiable terrain, including some 200 marked trails and 12 massive alpine bowls. The thickly forested slopes, breathtaking peaks, and expansive glaciers of this section of British Columbia's Coastal Mountains also provide a summer paradise for outdoor enthusiasts.

Hit golf balls off a glacier in summer or play on one of four championship golf courses; hike to the top of Rainbow

Mountain crossing suspension bridges, alpine meadows, or simply relax and take in breathtaking views by one of five glacier-fed lakes.

At the foot of the mountains, Whistler Village radiates European charm with a decidedly Canadian savoir-faire. It's a sophisticated, friendly destination where the pedestrian-only core brims with fine dining, après ski nightlife, exceptional shopping, street entertainment and a multitude of cultural and entertainment choices.

The surrounding area offers a wide range of excursions and activities:

Winter

Within a 5-minute walk of the Resort

- Snow-riding enthusiasts from all over the world love the two magnificent, side-by-side mountains of Whistler and Blackcomb. They have earned the rating of Best Ski Resort in North America, year after year. Skiers may choose from steeps, deeps, chutes, high alpine bowls, glades, superb corduroy or long cruisers. Snowboarders exult in Blackcomb's Superpipe, natural launch pads, cornices, cliff drops and ridges.
- Cross-country ski enthusiasts have more than 28 km (17.5 mi.) of track-set cross-country trails through a variety of terrain, from backcountry to alpine and valley. Track-set trails around the Whistler Golf Course are ideal for beginners.
- Snowshoeing is a tranquil way for the whole family to experience the wilderness, at any time of day – from an early-bird ascent on Whistler Mountain to a late-night trek to enjoy the star-filled skies.
- Cosy horse-drawn sleigh rides are a unique wintertime adventure, and some offer bonfires or a sing-along in an authentic teepee to round out the experience.

Within a 5-minute drive of the Resort

- Enjoy spectacular views from the panoramic windows of a luxurious, 12-seater Bombardier Snowcat as you charge up the mountain to a gourmet fondue dinner in the seclusion of a cosy mountaintop cabin.

- The network of trails and abundance of deep powder add up to an exhilarating snowmobile adventure. Tours are geared to all ages and abilities, and include the services of professional guides.

Within a 10-minute drive of the Resort

- The unadulterated joy of heli-skiing or uninterrupted snowboarding is available beyond the ski lifts of Whistler and Blackcomb. Experienced pilots and professional guides offer the ultimate high-alpine experience, skiing or snowboarding down 1,800 metres (6,000 ft.) of untracked powder, wide-open glaciers and enchanting glades. Intermediate to expert skiers and boarders will enjoy the rich variety of slopes.
- Wildlife viewing is exceptional in Whistler. Bordering the wilderness of Garibaldi Provincial Park, the area is inhabited by black bears, mountain goats, deer, cougars, wolverines and martins, along with golden eagles and much bird life. The historic Squamish River, just 30 minutes to the south, is winter home to one of the largest gatherings of the bald eagle in the world.
- The NHL-sized ice rink at Whistler's Meadow Park Sports Centre is ideal for indoor ice-skating or a game of drop-in hockey during the winter months.

Within a 20-minute drive of the Resort

- For a memorable backcountry dog-sledding adventure that can be enjoyed by all ages, drive a sled pulled by Alaskan racing huskies through the untouched winter wilderness of the Soo Valley Wildlife Reserve.
- Join a professional guide for a day of ice climbing up some of the best frozen waterfall routes around. First-timers are introduced to basic climbing techniques and safety practices before setting off. Experienced climbers are guided to the finest ice climbs to match their ability.

Summer

Within a 5-minute walk of the Resort

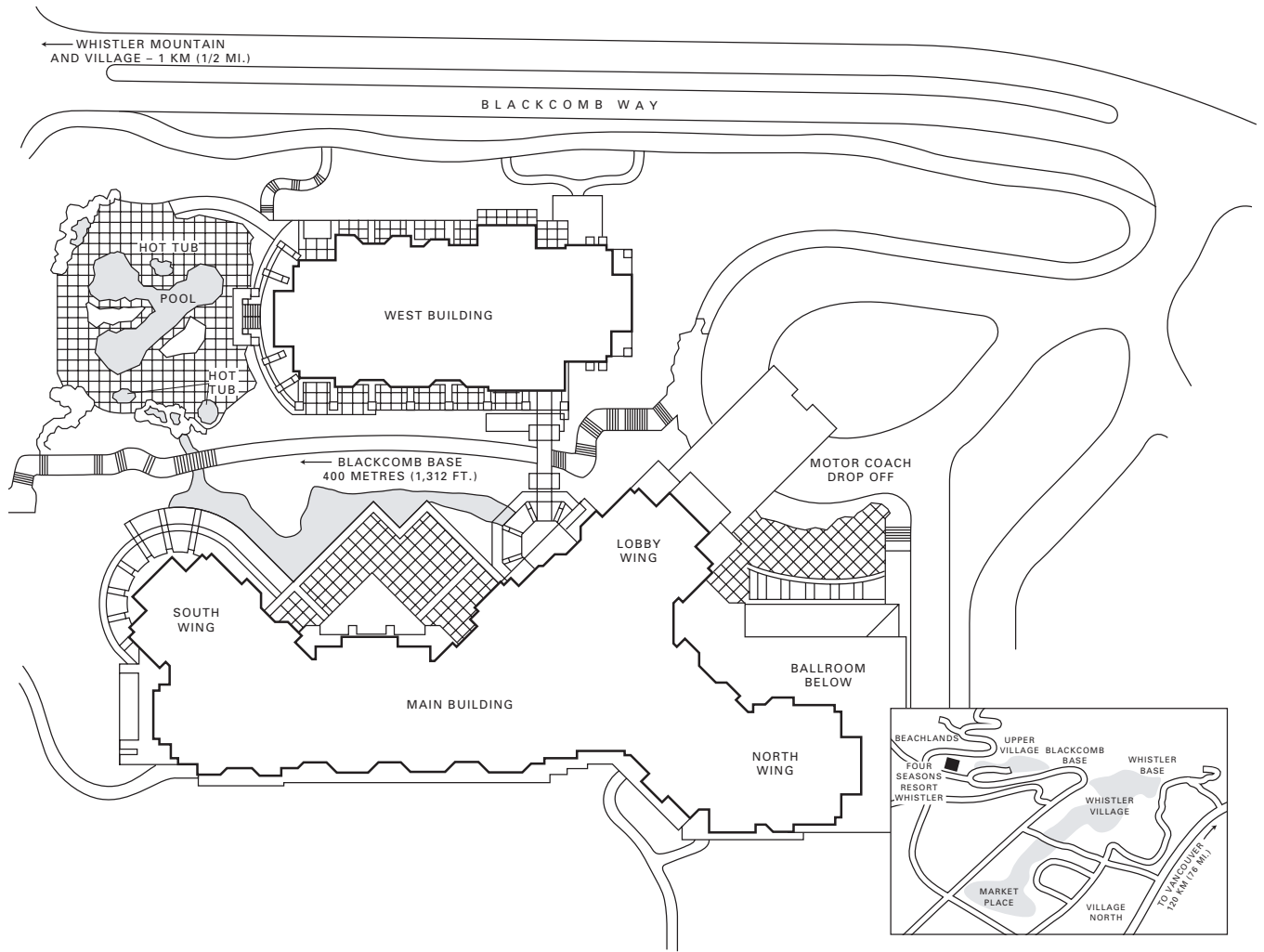
- At the base of Blackcomb, an 18-hole, up-and-down mini-golf course is fun for the entire family.
- Bear viewing and mountain ecology tours are offered in some of North America's most pristine black bear habitat. About 50 bears make their home amongst the old-growth coastal hemlock and cedar forests of Whistler and Blackcomb Mountains.
- At the base of Blackcomb Mountain, the Whistler Adventure Zone is a favourite with children and their families. Open from June to September, one of its most popular rides is the Westcoaster Luge, a joyride of 1.4 km (nearly a mile) down the lower part of the mountain. Other activities include horseback riding, mini-golf, the Great Wall Climbing Centre, trapeze, trampoline and paragliding.
- A trolley tour of Whistler Valley provides an enjoyable and informative overview perspective on the area's history.

Within a 10-minute walk of the Resort

- Designed specifically for mountain bikers, Whistler Mountain Bike Park has more than 200 km (124 mi.) of thrilling lift-serviced mountain descents and offers unsurpassed biking for riders of all ages and skill levels.
- The Valley Trail is ideal for in-line skating. Stretching 40 km (25 mi.) through the entire Whistler Valley, it links rivers, lakes, golf courses, the village, hotels, shops and parks. In-line skate rentals are a 10-minute walk from the Resort.
- Learn to drive a four-wheel drive ATV and explore the trails and vast open spaces of Whistler's backcountry, or head out with a guide to Singing Pass, the hidden valley between Whistler and Blackcomb mountains.
- Whistler has some of the best classic alpine mountaineering routes – some require pure alpine rock climbing, others involve a mix of glacier travel, snow and ice climbing. Local guides and courses, from beginner to advanced, are available to the thrill-seeking mountain adventurer.

Within a 5-minute drive of the Resort

- A 20-minute ride in the Whistler Gondola transports you up 1,829 metres (6,000 ft.) above sea level, where hundreds of hiking trails – from easy to difficult – are back-dropped by snow-capped mountains, meadows smothered in alpine flowers, deep forests and serene glacial lakes. Heli-hiking offers an exciting alternative. Trail maps are available from the Concierge.
- From July to October, qualified guides lead glacier tours that require no previous experience. Outfitted with boots, crampons, ice axe, helmet, harness and rope, participants are exposed to thousands of years of natural history and stunning alpine vistas.
- Touted as the world's most serious 4x4, the Hummer can navigate virtually any terrain. Experience the thrill of a ride up 2,100 metres (7,000 ft.) to Horstman Glacier and play in the snow!
- As the snow melts, it creates ideal conditions for rafting and jet boating, where breathtaking scenery unfolds along every mile of the glacier-fed waters. Local raft companies offer trips from a one-hour float to a multi-day adventure, while jet boat trips zip to the headwaters to view waterfalls and wildlife. "Raft and dine" and "saddle and paddle" are some of the trip options.
- Designed by Jack Nicklaus to maximize the drama of the setting, the winding, par 71, 18-hole Nicklaus North Golf Course overlooks snow-capped peaks, an emerald lake and soaring firs.
- Whistler Golf Club was Arnold Palmer's first Canadian design. The 18-hole, 6,676-yard, par 72 course offers superb golf and an unparalleled backdrop of mountains, lakes and towering stands of ancient cedars.



Within a 10-minute drive of the Resort

- Weather permitting, Blackcomb Mountain’s Horstman Glacier is open for skiing and snowboarding from June to August. This is when the pros, from halfpipe stars to Olympic downhill champions and World Cup mogul veterans, come to attend the area’s more than 40 summer training camps.

Within a 15-minute drive of the Resort

- Accompanied by fully certified professionals, rock climbers enjoy the climbs and rappels in Cal Cheak Canyon, a tranquil old-growth wilderness with glorious vistas of the glacier-capped Tantalus Mountains. The tours may incorporate scaling rock bluffs, crossing Burma bridges, flying across zip-lines and doing exhilarating rappels.

- Whistler Valley offers water sports enthusiasts ample opportunity to board sail, canoe, kayak, sail, or just relax on a warm sandy beach. Four of Whistler’s five lakes – Nita Lake, Alpha Lake, Alta Lake and Lost Lake – are strictly non-motorised and are comfortable for summertime swimming.

Within a 20-minute drive of the Resort

- Ride mountain-trained horses in Whistler’s remote wilderness, through open meadows walled in by mountain ranges, or meander by shady lakeside trails. Evening hayrides may also be arranged.
- Paraglide over some of Canada’s most breathtaking scenery. Experience is not required – you may either sign up to learn basic flying skills or opt for a tandem flight with a professional instructor.

Within a 35-minute drive of the Resort

- At the base of Mount Currie in Pemberton Valley, Big Sky Golf and Country Club offers the Robert Cupp-designed, 18-hole, par 72 course that blends sublime surroundings with superb golf.

Within a 1-hour drive of the Resort

- Canoeing the historic Lillooet and Ryan rivers offers an out-and-out Canadian experience for paddlers of all ages. The panoramic journey takes in dramatic waterfalls, remote wetlands, ancient cedar groves and Coastal Mountain wildlife.

Year-Round***Within a 5-minute walk of the Resort***

- Adjacent to Four Seasons, the Squamish Lil'wat Cultural Centre was created by the Squamish and Lil'wat people. The dramatic, three-story complex offers visitors the opportunity to learn about Canada's Aboriginal culture through art, music, dance, traditional foods and regalia.

Within a 10-minute walk of the Resort

- Shopping enthusiasts and art lovers enjoy the diversity offered by a host of unique shops, upscale boutiques and art galleries – where the work showcased ranges from contemporary fine art to the unique work of Northwest Coast Native artists – in Whistler Village, Blackcomb/Upper Village, Village North and Nester's Market. Creekside Village is a 10-minute drive.

Within a 5-minute drive of the Resort

- Whistler Museum focuses on the region's human and natural history. Part of the museum's appeal is that it continues to evolve as the town grows. Slide shows and tours of the valley may also be arranged.

CLIMATE

Due to its coastal proximity, Whistler enjoys moderate temperatures throughout the winter and enjoys an average of 9.14 metres (30 ft.) of snow on the summit, per year.

<i>Month</i>	<i>Highs</i>		<i>Lows</i>	
January	-2°C	28°F	-8°C	18°F
February	3	37	-5	23
March	8	46	-3	27
April	11	52	2	36
May	17	62	7	44
June	21	70	9	48
July	27	80	11	52
August	27	80	11	52
September	20	68	8	46
October	16	60	3	38
November	5	41	-1	30
December	-1	30	-5	23

GUEST ROOMS AND SUITES

Four Seasons Resort Whistler offers 273 guest rooms including 92 suites and 3 townhouses. With cosy dark wood interiors and gas fireplaces, the rustic luxury of every room captures the spirit of a mountain hideaway. In addition, expansive mountain, forest or courtyard views may be enjoyed from private balconies or step-out balconies off most rooms and suites. Extra-spacious en-suite slate tile bathrooms are warm and inviting, with Four Seasons signature features – deep soaking tub with separate glass-walled shower, large double vanity, and WC with telephone in a separate alcove. A well-defined work area in all guest accommodations allows guests to remain productive, with state-of-the-art technology, including high-speed Internet access and multi-line telephones. Each room has a large TV, a CD/ DVD player, in-room safe and fully stocked private bar.

Moderate Rooms

Overlooking the courtyard and measuring 48 m² (520 sq. ft.), these rooms offer a king bed and fireplace. This room is also available for special accessibility needs.

Superior Rooms

With views of the charming courtyard or the lower, treed slope of Blackcomb Mountain, Superior Rooms measure a generous 51 m² (550 sq. ft.). Located throughout the Resort, these rooms offer a king bed and fireplace, and a step-out balcony.

Deluxe Rooms

Deluxe Rooms offer expansive valley or beautiful courtyard vistas. Also measuring 51 m² (550 sq. ft.), many of the views take in Rainbow, Sprout or Wedge Mountain from the room's private balcony. Ideal for families or friends travelling together, some connect to another Deluxe Room and feature a king bed.

Premier Rooms

Located on the higher, slope-side floors of the Resort, Premier Rooms offer magnificent views of the mountains. Similar in size and appointments to the

Deluxe Room, they have a king bed and include a pullout sofa, fireplace, balcony and walk-in closet.

Four Seasons Executive Suites and Deluxe Four Seasons Executive Suites

These suites are perfectly suited for families or those on longer stays, with a bedroom separated from the living area by a door. A balcony, wood interior and gas fireplace create a cosy atmosphere. Deluxe Four Seasons Executive Suites offer an additional powder room off the living room.

One-Bedroom Premier Suites

Measuring an expansive 160 m² (1,726 sq. ft.), the One-Bedroom Premier Suites reflect the feel of a luxurious alpine residence, with cosy wood interiors, gas-burning fireplaces and superb mountain views. The living area encompasses an entertainment centre, dining for six, a full kitchen and laundry facilities. Features of the master bedroom include a king bed, a balcony, gas-burning fireplace, and entertainment centre with television and CD/DVD player.

Two-Bedroom Four Seasons Executive Suites

With captivating mountain views, these suites are located throughout the Resort. Offering spacious flexibility, they lend themselves to privacy and relaxation; the additional space is perfect for longer-staying guests or families travelling together. Measuring from 118 to 138 m² (1,270 to 1,485 sq. ft.), these rooms contain two master bedrooms and a shared living area that includes an 81-cm (32") TV and pullout sofa. The bedrooms are separated from the living area by a door and each features a king bed and an entertainment armoire with a large television and a CD/DVD player.

Two-Bedroom Premier Suites

Overlooking Blackcomb and Whistler Mountains, the Two-Bedroom Deluxe Suites are located on the upper floors of the Resort buildings and measure an expansive 213 m² (2,293 sq. ft.). Each luxurious bedroom has a king bed and its own extra-spacious bathroom, gas fireplace and secluded balcony, and is

separated from the living area by a door. Offering further convenience, these suites include a fully equipped kitchen, a dining area and a powder room. The living area includes a pullout sofa and a large-screen plasma television.

Two-Bedroom and Den Townhouses

These well-appointed and thoughtfully planned bi-level townhouses are accessed from the West Building's second floor and look to superb views of the surrounding mountains. Measuring a generous 169 m² (1,819 sq. ft.), they include an expansive living area for relaxing with family or entertaining friends or business associates. Both bedrooms have a king bed, gas fireplace, armoire with a large television and a CD/DVD player, and spacious bathroom. These beautiful townhouses also include a private balcony with a whirlpool, comfortable den with a pullout sofa, and a large television. For added convenience, these townhouses feature a fully equipped kitchen and a dining area.

Presidential Suites

The two Presidential Suites offer a spacious 269 m² (2,895 sq. ft.) of comfortable elegance, with views of Whistler and Blackcomb mountains. These suites have three bedrooms, each with a secluded balcony and a gas fireplace, one including a pullout sofa. Ideal for small groups or casual entertaining, the suites feature an expansive living room with a large plasma screen television, a separate dining area that seats up to eight guests, and a pantry to facilitate catering. A powder room leads off the living room.

IN-ROOM/SUITE AMENITIES

- 100% cotton oversized bath towels
- 100% wool blankets
- Down duvets and pillows
- Non-allergenic foam pillows available
- Thick terry towel bathrobes
- Complimentary toiletries
- Hair dryer

- Iron and ironing board
- Lighted make-up mirror
- Air-conditioning
- All-news cable network
- AM/FM clock radio
- CD and DVD players
- Fax hook-up
- Large-screen television
- In-room movies
- Satellite TV
- Soundproofing
- Multi-line telephone with voice mail
- Customized private bar (upon request)
- In-room coffee and tea
- In-room safe
- Gas fireplace
- Twice-daily housekeeping service
- Wired and wireless high-speed Internet access
- iPod docking station in all suites

GUEST SERVICES AND FACILITIES

- 24-hour, multilingual concierge service
- 24-hour In-Room Dining
- 24-hour laundry and dry-cleaning service
- Babysitting services
- Complimentary children's amenities and services
- Complimentary overnight shoeshine
- Express check-in and check-out
- Newsstand and sundries
- Non-smoking rooms
- One-hour pressing
- Umbrellas available
- Valet parking and self-parking
- Wheel-chair accessible rooms
- Transfers available to and from Vancouver
- Transfers to ski lifts and Whistler mountain

WELCOME AMENITIES AND VIP GIFTS

Special arrangements can be made for clients to purchase welcome amenities for their VIP guests.

FOOD & BEVERAGE

Four Seasons Resort Whistler celebrates its mountainside location by offering a wide-ranging variety of locally inspired cuisine, accompanied by an exclusive selection of wines from British Columbia's premier vineyards, and international vintages as well. Combined with Four Seasons impeccable standards for service, memorable dining is available in the Resort's restaurant, through In-Room Dining (available 24 hours a day) and for banquets and special events.

RESTAURANTS

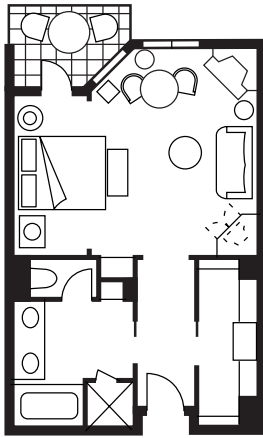
Fifty Two 80 Bistro

Named for the number of feet that Blackcomb Mountain towers above the village below, Fifty Two 80 Bistro & Bar celebrates its spectacular alpine location with glorious views from a brilliant firelit setting. Fifty Two 80 Bistro offers breakfast, lunch and dinner daily in a casual and lively setting. Dinner is an adventure in seafood and regionally inspired cuisine. Summertime brings wonderful outdoor dining adjacent to the wood-burning fireplace. Seats 90 indoors, 70 outside.

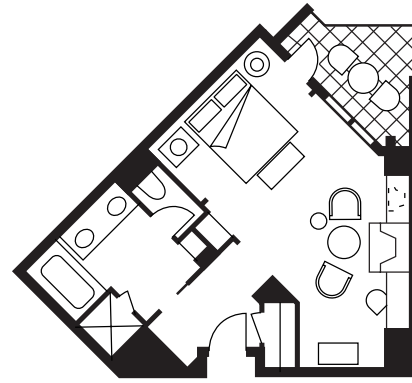
Fifty Two 80 Bar

Fifty Two 80 Bar is a relaxed, welcoming lounge for winding down an active day. Tempting bar plates for one or many are offered throughout the day to be enjoyed with a classic cocktail, a creative martini or a selection from an enticing wine list. An inviting heated terrace is open year round, and the wood-burning fire pit is a popular choice for socialising after an energetic day on the mountain. Seats 70 indoors and 35 outside.

Food and Beverage Hours of Operation	
Fifty Two 80 Bistro	
<i>Daily</i>	7:00 am – 10:00 pm
Fifty Two 80 Bar	
<i>Daily</i>	11:30 am – 1:00 am
In-Room Dining	
<i>Daily</i>	24 hours a day



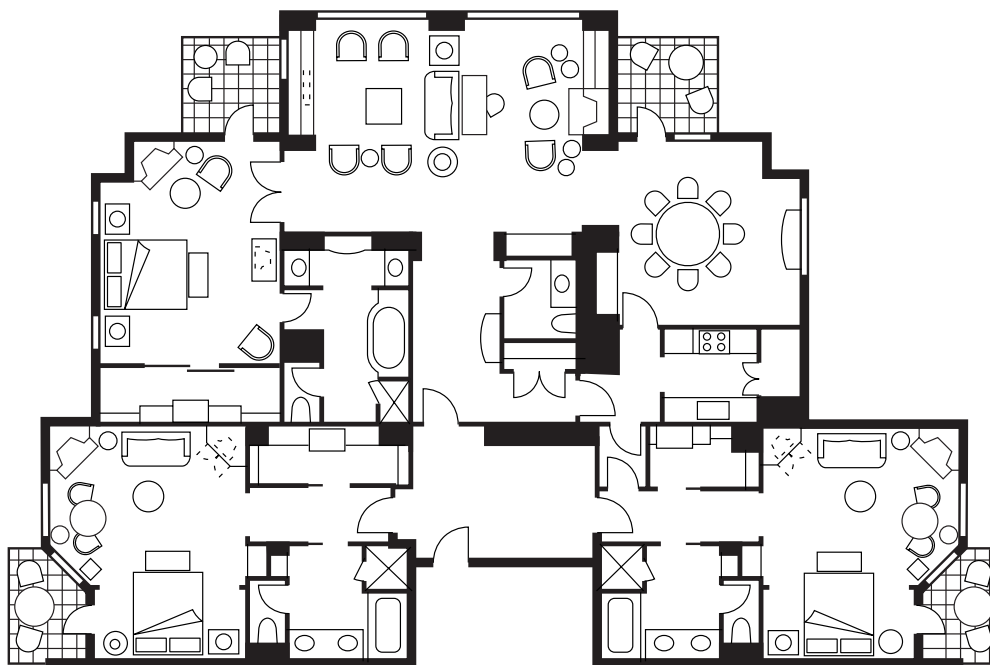
DELUXE ROOM/PREMIER ROOM



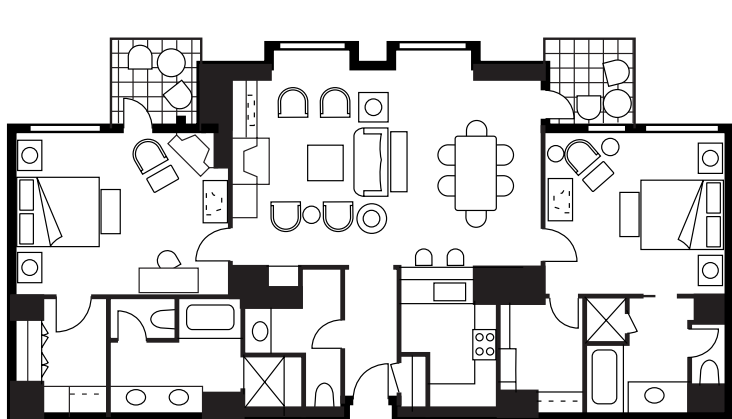
SUPERIOR ROOM

Guest Room Inventory

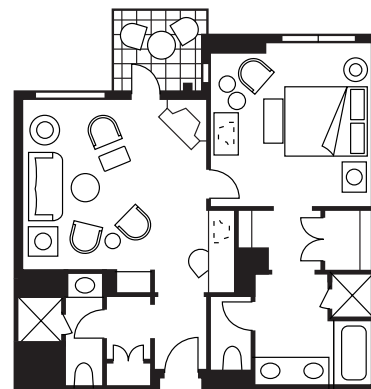
Room Category	Number	Size		Special Features
		(m ²)	(sq. ft.)	
Moderate Rooms	17	48	520	King bed, gas-burning fireplace, and overlook the courtyard.
Superior Rooms	39	51	550	King bed, gas-burning fireplace, step-out balcony. Views of courtyard or treed slope of Blackcomb Mountain.
Deluxe Rooms	82	51	550	King bedroom with pullout sofa, a gas-burning fireplace, private balcony, walk-in closet.
Premier Rooms	40	51 – 53	550 – 580	Located on higher floors with magnificent views of the mountains. King beds, some rooms include pullout sofa.
Four Seasons Executive Suites	29	74 – 78	797 – 840	Separate sleeping and sitting areas. Pullout sofa in living room. Some can be combined to form a Two-Bedroom Four Seasons Executive Suite.
Deluxe Four Seasons Executive Suites	54	74 – 80	797 – 861	Separate sleeping and sitting areas with views of courtyard or the mountains. Pullout sofa in living room and a powder room off the living area.
One-Bedroom Premier Suite	3	160	1,726	Superb mountain views. Living area with dining for six, full kitchen and laundry facilities. The king-bedroom has a balcony, gas-burning fireplace and entertainment centre.
Two-Bedroom Four Seasons Executive Suites	2	118 – 138	1,270 – 1,485	Captivating views of the mountains or courtyard. Larger suites have king beds and full-sized living room.
Two-Bedroom Premier Suites	2	213	2,293	On upper floors, overlooking the mountains, with a fully equipped kitchen, dining for six and a powder room.
Two-Bedroom and Den Townhouses	3	169	1,819	Well-appointed bi-level townhouses with views of the surrounding mountains. King-bedded rooms with gas fireplace; den with pullout sofa; fully equipped kitchen and dining for six.
Presidential Suites		269	2,895	Spacious elegance, overlooking pool and Whistler and Blackcomb Mountains. Three bedrooms, each with fireplace and balcony; one with pullout sofa. Expansive living room, separate dining area, a pantry and powder room.
Total	273			



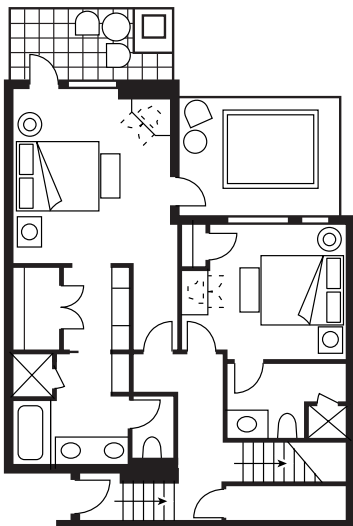
PRESIDENTIAL SUITE



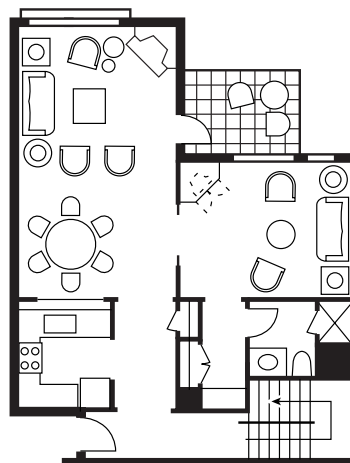
TWO-BEDROOM PREMIER SUITE



DELUXE FOUR SEASONS EXECUTIVE SUITE



TWO-BEDROOM AND DEN TOWNHOUSE - LEVEL 1



TWO-BEDROOM AND DEN TOWNHOUSE - LEVEL 2

CONFERENCE AND BANQUET FACILITIES

Four Seasons is Whistler's venue of choice for meetings, conferences and incentive events for groups of up to 350 people. Its 932 m² (10,035 sq. ft.) of banquet and meeting space is enhanced by a range of outdoor lawns and terraces.

Combining the ambience of a mountain resort with the most up-to-date technology, the Resort's fully equipped meeting rooms offer complete flexibility for board meetings, seminars and conferences. Cocktail parties and other alfresco functions, such as barbecues and theme events, may be staged in various locations throughout the Resort, including in the courtyard or on the Event Lawn, which offers a delightful setting for receptions of up to 80 people.

The opening of the Squamish Lil'wat Cultural Centre adds an additional 2,824 m² (30,400 sq. ft.) of available function space. Through an exclusive partnership with the Centre – which accommodates a wide range of events, from a banquet for 140 in the Great Hall and 150 in the Istken, to 300 for a reception in the Great Hall and 200 in the Istken – Four Seasons offers an outstanding opportunity to experience First Nations-inspired culinary menus in a breathtaking venue.

For every business and social function, experienced Four Seasons support is always on site, ready to respond promptly to every need.

TECHNICAL ASSISTANCE

All meeting spaces at the Resort are fully equipped to support the most demanding presentation and communication requirements, with advanced lighting, AV and staging capabilities, telecommunications and electrical hook-ups.

Electrical Outlets

Telecommunications and electrical hook-ups are designed to meet or exceed industry standards.

MUSIC AND ENTERTAINMENT

Our team of conference and banquetting specialists can arrange music and entertainment to complement any part of your function or event. From classical and jazz to comedy entertainment, we are able to meet your needs.

RECEIVING/MAINTENANCE

Receiving

Special arrangements for the delivery of oversized packages or environmentally sensitive equipment should be made through the Banquet Manager.

Maintenance

The Engineering Department is available 24 hours a day for general assistance with lighting, room temperature control and minor repairs.

SPOUSE PROGRAMMES

The Resort offers a variety of activities that will interest the spouses of meeting participants, and the Concierge will provide detailed information on specially tailored spouse programmes.

- Customised spa experience
- Wine tasting
- A mountaintop salmon bake
- Cooking class with the chef
- A fly-fishing trip
- Off-road 4 x 4 tours
- Nature/ecology tours

CHILDREN'S AND FAMILY PROGRAMMES

Complimentary Activities

Four Seasons Resort Whistler offers a perfect base for families visiting the area, and always extends an especially warm welcome to its young guests. Bedtime milk and cookies are offered every night, and a child-sized terry cloth bathrobe is provided for the duration of every child's stay.

Special facilities and services are available for families, including disposable baby bottles, baby toiletries, disposable diapers, strollers, pacifiers, thermometers, playpens, highchairs, bibs, infant bathtubs, disposable swimsuits and a children's menu.

Babysitting services are offered by the Nanny Network, a fully accredited agency that accepts children of all ages, and may be booked through the Concierge.

Off-Site Activities

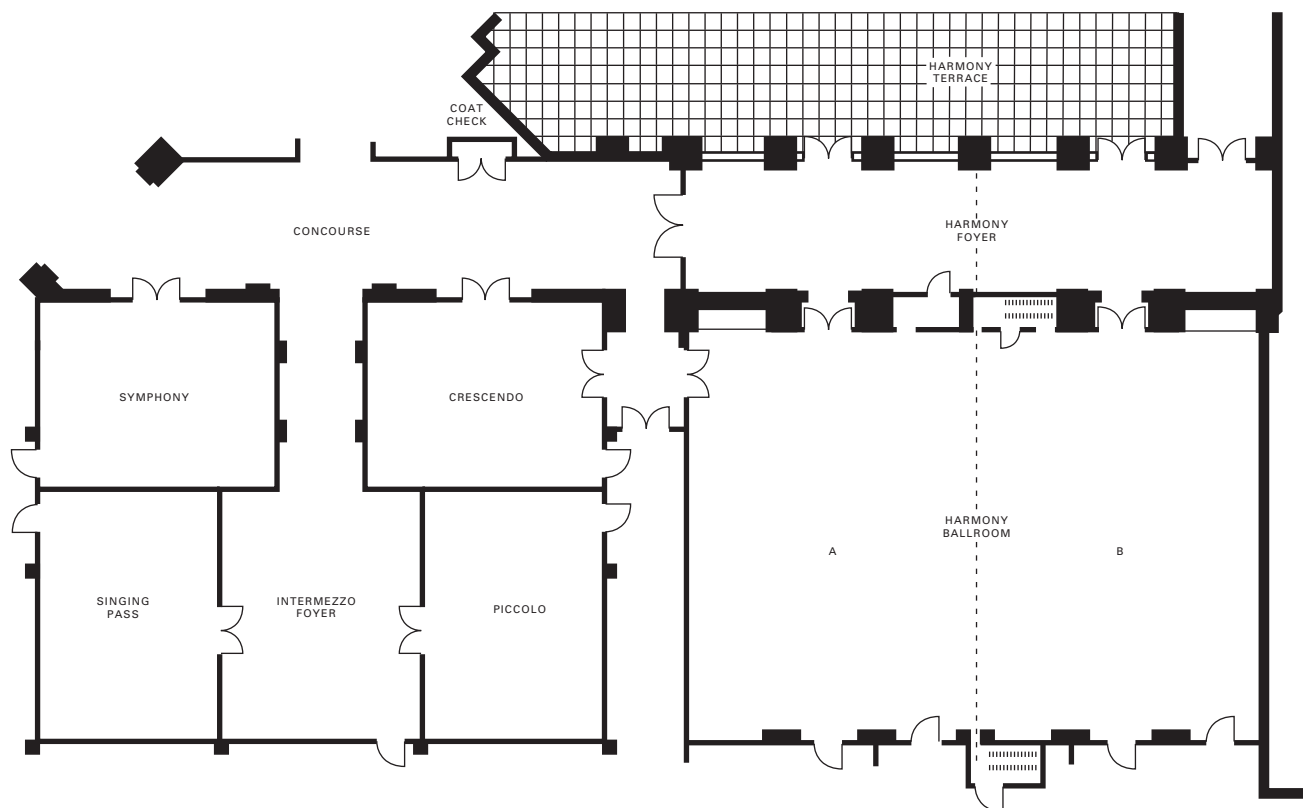
The Concierge will help children and their parents organise activities that will create special memories for the entire family. Possibilities range from a zipline eco-adventure to a black bear viewing tour or canoeing on Alta Lake.

BUSINESS SERVICES

The Concierge will provide round-the-clock business services and support. Computers, audiovisual equipment and a wide range of secretarial services are available. Airline reservations and transfers, worldwide courier service, overhead projectors, screens and office equipment rental can also be arranged.

Other business services offered by the Hotel include:

- 24-hour business services (fax, postage, photocopying, delivery)
- Complimentary newspaper with breakfast
- Meeting and special event facilities
- Multi-line telephone in every room
- Multilingual concierge services
- Office supplies
- Printing services
- Translation services
- Video cassette recorders
- Voice mail
- Wired or wireless high-speed e-mail and Internet access in every guest room and suite
- 932 m² (10,035 sq. ft.) of versatile meeting and function space



Rooms	Dimensions (m)	Size		Ht. (m)	CAPACITIES						
		(m ²)	(sq. ft.)		Reception	Banquet	Theatre	Class-room	Board-room	Hollow Square	U-Shape
Harmony Ballroom*	16.0 x 22.1	350	3,800	6.1	350	250	300	180	-	-	-
Harmony Ballroom A	11.05 x 16.0	175	1,900	6.1	175	120	125	90	40	40	36
Harmony Ballroom B	11.05 x 16.0	175	1,900	6.1	175	120	125	90	40	40	36
Harmony Foyer*	5.0 x 22.7	114	1,225	4.1	100	-	-	-	-	-	-
Symphony	6.9 x 9.1	63	678	3.2	60	50	40	30	25	25	18
Crescendo	6.9 x 9.1	63	678	3.2	60	50	40	30	25	25	18
Singing Pass	6.9 x 9.3	64	690	3.2	60	50	40	30	25	25	18
Piccolo	6.9 x 9.3	64	690	3.2	60	50	40	30	25	25	18
Intermezzo Foyer	6.9 x 9.3	64	690	3.2	60	-	-	-	-	-	-
Harmony Terrace	6.1 x 21.6	132	1,420	-	80	-	-	-	-	-	-
Alpine Cabana	12.1 x 12.1	146	1,576	3 - 6.1	125	80**	-	-	-	-	-

* Divisible in two

** Suitable for table-seating only; a stage, buffet, standing screen or a band cannot be accommodated.

1 m = 3.2808 ft.

1 m² = 10.7639 sq. ft.

Winter

Typical 5-Day Incentive Group Activity	Day 1	Day 2	Day 3	Day 4	Day 5
	<p>Arrival Meet at airport and transfer via the scenic Sea to Sky Highway to Resort by limousine</p> <p>Rest and refresh at the Resort after your flight:</p> <ul style="list-style-type: none"> • Enjoy a massage or beauty treatment at the spa • Work out in our fitness centre • Relax in an outdoor whirlpool tub with views of mountains and forest <p>Welcome Reception <i>A Whistler Welcome</i> The evening begins with cocktails in the Harmony Foyer, followed by dinner in the festively decorated Harmony Ballroom, featuring delicacies created by Four Seasons chefs</p>	<p>Breakfast A private group “mountain buffet” in the Harmony Ballroom and orientation to Whistler and its many activities</p> <p>Morning <i>Choose from:</i></p> <ul style="list-style-type: none"> • Hit the slopes! Ski at your leisure or take a lesson • Cross-country skiing along groomed mountain trails • Snowshoeing through the coastal rainforest <p>Lunch At your leisure at one of the many restaurants in Whistler Village</p> <p>Afternoon <i>Choose from:</i></p> <ul style="list-style-type: none"> • Customised treatments in the full-service alpine spa • Visits to village art galleries or the Whistler Museum • Relaxing by the fireplace with a good book <p>Evening <i>Canadian Pleasures</i> Enjoy a moonlit horse-drawn sleigh ride, followed by a sumptuous fondue dinner at The Den at Nicklaus North</p>	<p>Breakfast Breakfast buffet in Fifty Two 80 Bistro</p> <p>Morning Raft down the Cheakmus River, just south of Whistler, and see hundreds of bald eagles that winter in this part of Canada. Our Four Seasons chefs will pack a gourmet picnic lunch to take along for the ride</p> <p>Afternoon <i>Choose from:</i></p> <ul style="list-style-type: none"> • Skiing or snowboarding • Dogsledding through the Soo Valley Wildlife Reserve • A thrilling helicopter tour over the mountains • A soaring zipline eco-adventure tour over Fitzsimmons Creek <p>Evening <i>A Back-country Adventure</i> Travel by snowmobile to a remote back-country lodge, where a traditional salmon bake awaits. On your return to the village, enjoy a sizzling night on the town in one of the many local nightspots</p>	<p>Breakfast Private group buffet breakfast</p> <p>Daytime <i>Choose from:</i></p> <ul style="list-style-type: none"> • Skiing at your leisure • Heli-skiing beyond the lifts to enjoy the vast variety of slopes • Snowshoeing through the forest • Cross-country skiing along pristine trails • Learning about winter photography from an award-winning local photographer <p>Evening <i>Whistler Wonderland</i> Start the evening with specialty cocktails and appetisers at Roundhouse Lodge, 1,219 m (4,000 ft.) above the village of Whistler. Enjoy spectacular mountain vistas as the sun goes down, then descend in the Gondola for a dine-around at Whistler’s finest restaurants, accompanied by a Canadian Olympic athlete. End the evening with a chocolate buffet and ice-wine tasting at Four Seasons Resort Whistler</p>	<p>Breakfast In-Room Dining by your fireplace</p> <p>Daytime <i>Choose from:</i></p> <ul style="list-style-type: none"> • Skiing or snowboarding at your leisure • A test of your skill and speed on the Pontiac Downhill race-course. Fun awards will be presented at the evening’s gala dinner <p>Evening <i>Whistler Winter Ice</i> Your farewell to Whistler is an unforgettable Whistler Winter Ice themed gala. Following a cocktail reception on the heated outdoor courtyard, your group moves into the lavishly decorated Harmony Ballroom, alive with strolling musicians, entertainers and magicians. Food stations include Canadian cuisine such as fresh West Coast seafood and spectacular Native-influenced dishes, paired with British Columbia’s award-winning wines. This memorable experience ends on a captivating note with enchanting entertainment</p>

Spring, Summer and Fall

Typical 5-Day Incentive Group Activity	Day 1	Day 2	Day 3	Day 4	Day 5
	<p>Arrival Meet at airport and transfer via the scenic Sea to Sky Highway to Resort by limousine</p> <p>Rest and refresh at the Resort after your flight:</p> <ul style="list-style-type: none"> • Enjoy a massage or beauty treatment at the spa • Work out in our fitness centre • Relax in an outdoor whirlpool tub with views of mountains and forest <p>Welcome Reception <i>A Whistler Welcome</i> The evening begins with cocktails on the Courtyard Patio as the alpenglow lights up the mountains. Your group moves into the Harmony Ballroom for dinner, with delicacies created by Four Seasons chefs, themed on West Coast Native dishes</p>	<p>Breakfast A private group breakfast alfresco in the Courtyard Patio</p> <p>Morning <i>Choose from:</i></p> <ul style="list-style-type: none"> • Golf on one of Whistler's four designer championship courses • A back-country tour with an experienced mountain guide • A gondola ride up to alpine meadows for a leisurely stroll <p>Lunch At your leisure</p> <p>Afternoon <i>Choose from:</i></p> <ul style="list-style-type: none"> • Customised treatments in the full-service alpine spa • Visits to village art galleries or the Whistler Museum • Exploring local mountain bike trails <p>Evening <i>Lakeside Magic</i> Your evening begins with cocktails on the beach at one of Whistler's five scenic lakes. Then, Four Seasons chefs fire up the barbecues for an unforgettable open-air feast. The evening ends with music, songs and a blazing beach bonfire</p>	<p>Breakfast A private group breakfast at Nicklaus North Golf Club, a stunning lakeside location with a scenic mountain backdrop</p> <p>Daytime Full-day adventures on the water <i>Choose from:</i></p> <ul style="list-style-type: none"> • Exploring the rivers of Whistler, zipping in jet boats to the headwaters for exceptional waterfalls and wildlife viewing • For the more adventurous, a day of heart-stopping white-water rafting! <p>Lunch Enjoy your gourmet Four Seasons picnic lunch, packed especially for you</p> <p>Evening <i>The Canadian West</i> Celebrate the great Canadian outdoors! Start with cocktails in the magnificent open-air setting of the Pemberton Adventure Ranch. Then, sit down to a Wild West buffet barbecue cookout</p>	<p>Breakfast A hearty Canadian-style buffet in Fifty Two 80 Bistro</p> <p>Daytime <i>Choose from:</i></p> <ul style="list-style-type: none"> • Golf at one of Whistler's scenic championship mountain courses • An ATV tour on Cougar Mountain • Viewing black bears on a mountain ecology tour • Mountain biking in Whistler Mountain Bike Park • Canoeing or kayaking down the River of Golden Dreams • An outdoor watercolour class with a local artist <p>Evening <i>Out and About</i> Begin the evening with cocktails and British Columbia wines in Fifty Two 80 Bar. Then, set off for a fiesta of tastes and temptations in Whistler's best restaurants. Finish the evening at one of Whistler's sizzling nightspots</p>	<p>Breakfast at leisure In-Room Dining on your private terrace</p> <p>Daytime <i>Choose from:</i></p> <ul style="list-style-type: none"> • Fantastic photo opportunities from your scenic flight over the mountains • A guided fishing trip to secret valley and alpine locations • In-line skating along the perfectly paved Valley Trail • Horseback riding in Whistler's remote wilderness <p>Evening <i>Farewell to Whistler</i> Gondola over 1,829 m (6,000 ft.) above sea level to the top of Whistler Mountain, where your group will mingle over cocktails on the deck, thrilling to spectacular 360-degree views. Award winners and VIPs helicopter to the top. Savour a delightful four-course dinner at the Roundhouse at the peak of Whistler Mountain as the sun sets. Enjoy truffles and liqueurs as you journey back down</p>

RECREATIONAL FACILITIES

On-Site*Fitness Centre*

Open daily from 6:00 am to 10:00 pm, Four Seasons Fitness Centre includes a fully equipped health club and luxurious locker rooms with steam rooms and showers. Personal training sessions can be arranged with the centre's certified trainers, and complimentary fitness classes are available. The centre's state-of-the-art equipment includes:

- cardiovascular machines
- Cybex weight-training equipment
- stationary bicycles
- elliptical crosstrainers
- treadmills

Spa

Capturing the natural serenity of the mountain wilderness, the full-service spa provides a comprehensive range of spa treatments inspired by a regional Sea-to-Sky theme – all to promote relaxation, invigoration and renewal. The facility offers 14 treatment rooms, including a Vichy shower room, two couples' suites and two relaxation lounges.

Pool

The panoramic vistas of Whistler and Blackcomb Mountains may be enjoyed year round, in the fully heated, 23-m (75-ft.) outdoor, free-form pool – as may the unadulterated pleasure of relaxing in any of the three hot-spring-style outdoor whirlpools, adjacent to the pool.

Ski Concierge

The Resort provides its own dedicated ski concierge services, located both at the Resort and at the base of Blackcomb Mountain. To ensure that Four Seasons guests get the most out of their ski experience, the Ski Concierge will arrange for everything from equipment rental and clothing – including prewarmed boots and helmets – to lift tickets and private skiing and snowboarding lessons. The Ski Concierge at the base of the mountain will store skis and boots overnight. The Resort provides a complimentary shuttle service in an SUV to the base of Blackcomb or Whistler Mountain.

Off-Site*Golf*

Whistler has become a world-class golf destination in which visitors may play at five exceptional golf courses, in majestic surroundings of snow-capped peaks and towering firs. All offer a pro shop, golf instruction, and club and shoe rentals. The three closest to the Resort are:

- the Chateau Whistler Golf Course, a par-72, 18-hole Robert Trent Jones Jr.-designed course, a 2-minute walk from the Resort;
- the par-71 Nicklaus North Golf Course, an 18-hole championship course designed by Jack Nicklaus, a 5-minute drive away;
- the Whistler Golf Club, also a 5-minute drive, with a par-72, 18-hole championship course designed by Arnold Palmer.

Two more distant courses are well worth the drive:

- the tranquil, par-72 Big Sky Golf Course at Pemberton, designed by Robert Cupp, is a 25-minute drive, and
- the Furry Creek Golf Course (a 60-minute drive) boasts panoramic ocean and mountain views as a backdrop to its par-72, 18-hole course designed by Robert Muir Graves. And for a truly one-of-a-kind adventure, play the 19th hole with any one of our golf course partners and be whisked off in a helicopter to hit biodegradable golf balls right off a nearby glacier!

Tennis

A 10-minute walk from the Resort, the Whistler Racquet Club offers a majestic setting and 10 courts that are lit for night play. Three are covered to allow play year round. Outdoor tennis courts that are free to the general public are located near the Resort.

Year-Round Activities – Off-Site*Peak 2 Peak Gondola*

Whistler Blackcomb, a mountain resort already renowned for daring innovation, has announced its boldest move yet with the construction of the PEAK 2 PEAK Gondola. Uniting two mountains and

setting world records for length and height, the Gondola provides an unmatched experience for all seasons. The PEAK 2 PEAK Gondola travels 4.4 kilometres in just 11 minutes, transporting winter and summer guests from Whistler's Roundhouse Lodge to the Rendezvous Lodge on Blackcomb Mountain. This allows unprecedented access to both mountains' expansive and unique high alpine terrain providing spectacular vistas. For more information, visit www.peak2peakgondola.com.

Bungee Jumping

Whistler Bungee is one of only two bungee jumping spots in British Columbia. This adrenaline-pumping activity takes place in Cheakamus Canyon, where jumpers may leap from a 20-storey-high bridge down 54 metres (177 ft.) into the gorge of the rushing Cheakamus River.

Fishing

Guided fishing trips to catch trout, Dolly Varden, char and steelhead can be arranged. "Catch and release" is strongly encouraged. Luxury salmon fishing – for chinook, coho, pink, chum and sockeye salmon – is also offered year-round at Sonora Resort, on an Inside Passage island an hour's flight from Whistler, and at Peregrine Lodge, at the northern edge of the Queen Charlotte Islands, a two-hour flight from Whistler.

Mountaintop Dining

Ride the gondola to the top of Blackcomb Mountain for a salmon bake dinner at the Crystal Hut, a cosy Canadian-style log cabin. Hot tubs on its patio provide an opportunity for guests who bring swimsuits to relax and enjoy the breathtaking mountain vista.

Zipline Eco-Adventures

Whistler is the home of North America's first zipline eco-adventure tour, and the only one to operate in winter conditions, providing a unique perspective on the snowbound wilderness. Using harnesses, pulleys, aerial platforms and zipline cable, visitors of all ages soar through the treetops between Blackcomb and Whistler Mountains.