

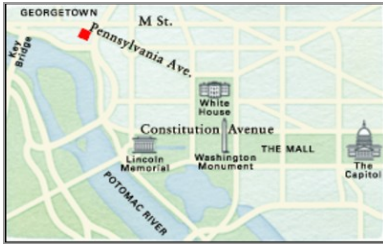


Quick Reference Guide

Last updated May 3, 2012 | For additional information please contact the hotel directly

Four Seasons Hotel Washington, DC
2800 Pennsylvania Avenue N.W., Washington, DC, 20007, U.S.A.
Tel 1.202.342.0444 | Fax 1.202.944.2076 | Res 1.202.944.9151

www.fourseasons.com/washington



2800 Pennsylvania Avenue N.W.
Washington, DC 20007, U.S.A.
Tel 1.202.342.0444
Fax 1.202.944.2076
Res 1.202.944.9151

AIRPORTS

- Ronald Reagan Washington National Airport (DCA): 15 minutes (7 miles/11 kilometres)
- Dulles International Airport (IAD): 45 minutes (26 miles/42 kilometres)
- Baltimore / Washington International Airport (BWI): 50 minutes (30 miles/48 kilometres)

TABLE OF CONTENTS

- 2 *Introduction*
- 4 *Destination*
- 9 *Conference Facilities*
- 15 *Guest rooms, Suites and Private Residences*
- 19 *Dining*
- 20 *Recreational Facilities*
- 22 *Appendix: Conference Chart*

Discover the flawless hospitality of Washington's premier hotel. Unequaled attentiveness and gracious service attract business and leisure guests, dignitaries and celebrities to this legendary Pennsylvania Avenue luxury retreat in prestigious Georgetown.



Only 12 blocks from the White House, Four Seasons Hotel Washington, DC, is nestled among 19th-century row homes in vibrant, upscale Georgetown – close to business, diplomatic and government offices and to countless museums and heritage sites.

Attention to detail has made Four Seasons the Capital's premier hotel experience for more than a quarter-century. This attention is reflected in a transformation that adds a welcoming new lobby, a signature restaurant and a lavish Royal Suite.

Just as designer Pierre-Yves Rochon balanced gallery and residence in his east wing renovation of the Hotel's 222 guest rooms, his lobby redesign marries art and garden. The interior winter garden, stone fireplace and works of art from the Hotel's 2,000-piece collection create an elegant, cosmopolitan space. In BOURBON STEAK, Michael Mina – one of America's top chefs – brings a unique menu to Washington. Seasons remains the setting for power breakfasts and Sunday brunch. And the resort-style Fitness Club and Spa offers rejuvenation for guests and day visitors alike.

With meticulous service and sunlit facilities capable of hosting the highest-level functions, for four to 800 guests, Four Seasons offers a setting for business and social occasions without equal in Washington.

TRANSPORTATION

Three airports service the Washington area. The Ronald Reagan Washington National Airport (DCA) is 7 miles (11 kilometres) from the Hotel and handles all major national airlines. The Washington Dulles International Airport (IAD) services all national and international airlines and is 26 miles (42 kilometres) west of Washington. The Baltimore Washington International Airport (BWI) services all major national and international airlines from its position 30 miles (48 kilometres) east of the city.

WEATHER CHART

Month	°F		°C	
	Highs/Lows	Highs/Lows	Highs/Lows	Highs/Lows
January	45	/ 30	5	/ -1
February	46	/ 29	8	/ -1
March	54	/ 36	12	/ 2
April	66	/ 46	19	/ 8
May	76	/ 56	25	/ 14
June	83	/ 65	29	/ 19
July	87	/ 69	31	/ 20
August	85	/ 68	30	/ 20
September	76	/ 61	26	/ 16
October	68	/ 50	20	/ 10
November	57	/ 39	15	/ 4
December	46	/ 32	8	/ 0

DESTINATION

Washington, DC, is a monument to America's history. Founded in 1791 by an act of Congress as the fledgling country's new capital, Washington has blossomed into a dynamic, beautiful city that reaches far beyond its political roots. Today, this cosmopolitan city is a thriving urban centre with a reverence for its historical treasures.

WEATHER

Washington is temperate throughout most of the year. Spring and Fall are the most glorious seasons with very mild, comfortable temperatures. Winter provides occasional snow and summer is usually very warm.

LOCAL ATTRACTIONS AND ACTIVITIES

In the historic Georgetown district of downtown Washington, DC, the Hotel provides a unique vantage point from which to explore the capital region's sights, sounds and experiences. We hope these highlights of attractions in downtown DC and the metropolitan area help simplify your planning. Please let us know how else we can assist you.

Within a 5-minute walk of the Hotel

Alla Rogers Gallery :

- This gallery is located within the Canal Square Galleries which is located three blocks from the Hotel. Alla Rogers specialises in Central and Eastern European Art.

Galerie Lareuse:

- Established in 1983, this gallery specialises in original works on paper, including 19th and 20th century European prints.

Cady's Alley:

- Located in Georgetown's design district, the setting offers international and local home furnishing retailers and trendy boutiques. Cady's Alley also features a central courtyard and a pedestrian-friendly alleyway to stroll.

Old Stone House:

- Built in 1765 by cabinetmaker Christopher Layman, it is the oldest standing building in Washington D.C., and a prime example of pre-Revolutionary American architecture.

Within a 10-minute walk of the Hotel

Georgetown Gallery of Art:

- Established in 1957, this unique gallery specializes in representing fine-quality, modern masterworks. Featured artists include Picasso and Chagall, with particular emphasis on Henry Moore. The gallery also exhibits the work of emerging talents. Fourteen blocks from the Hotel.

Govinda Gallery:

- Since 1975, Govinda Gallery has developed into one of the most innovative contemporary galleries in the United States, known for exhibiting many of the nation's leading pop artists. Seven blocks from the Hotel.

Guarisco Gallery, Ltd.:

- Features important 19th- and early 20th-century British, European and American oil paintings and sculptures. Artists include T. Buttersworth, J. Carmichael, G. d'Espagnat and H. Herzog.

Within a 5-minute drive of the Hotel

The White House:

- This 132-room mansion has been home to every president except George Washington. Presidents live, work, entertain visiting dignitaries and represent the United States within this showcase of American history. The White House is currently closed to tours, unless booked in advance by a member of Congress.

The Phillips Collection:

- America's first museum of modern art features Renoir's "Luncheon of the Boating Party" and works by Cezanne, Bonnard, Braque, El Greco, Manet and more.

John F. Kennedy Center for the Performing Arts:

- This living memorial to the late president houses five theatres and is home to the National Symphony Orchestra and the Washington Opera.

Lincoln Memorial:

- The 16th President of the United States, Lincoln led his country through the Civil War, believed strongly in the Declaration of Independence and abolished slavery. He was assassinated in 1865.

Washington Monument:

- Completed in 1885, it is the most famous structure in Washington, D.C., built in honour of George Washington, who led the country to independence before becoming its first President.

Roosevelt Memorial:

- Serving as President from 1933 until 1945, Franklin D. Roosevelt led his first presidential campaign during the Great Depression. By addressing the Country by radio, he instilled courage and optimism throughout the country.

Within a 10-minute drive of the Hotel

U.S. Capitol:

- Under this magnificent white dome, senators and representatives meet to shape legislative policy. Tours can be reserved online. To visit the galleries, contact a member of Congress.

Arlington National Cemetery:

- America's largest and most revered national burial ground, Arlington National Cemetery is home to the Tomb of the Unknowns and is the final resting place of President John F. Kennedy, Jacqueline Kennedy Onassis and veterans of every American conflict since the Civil War. Open for free tram tours daily.

Washington National Cathedral:

- This 14th-century-style Gothic cathedral was built as a house of worship for all Americans. Details include fanciful stone carvings, gargoyles and a stained-glass window housing a moon rock.

Smithsonian Institution:

- Known fondly as "America's attic" and created "for the increase and diffusion of knowledge among men," the Smithsonian Institution comprises 14 major individual museums and the National Zoo. Smithsonian Museums include the National Air and Space Museum, the Museum of Natural History and the National Museum of American History.

United States Holocaust Memorial Museum:

- The sombre and moving displays at the museum tell the story of the Holocaust through artifacts, films, photographs and oral histories. Admission is free but requires an advance pass, which can be obtained at the Holocaust Museum or through the Hotel.

Corcoran Gallery of Art:

- Washington's oldest art collection features Dutch and Flemish masterpieces, French impressionists and American art.

International Spy Museum:

- Featuring the largest collection of international espionage-related artifacts open to the public, the museum chronicles the history of spying throughout the ages, across the globe and today. This new museum is one of Washington's most popular. Advance tickets are recommended and can be purchased through the Hotel for a nominal charge.

United States Botanic Garden:

- The newly renovated Conservatory features a greenhouse divided into separate rooms, each replicating a different habitat. It is located on the U.S. Capitol Grounds campus near Garfield Circle.

Ford's Theater:

- As a living tribute to Abraham Lincoln's love of the performing arts, Ford's Theater presents the best in contemporary American theatre. Free admission daily (except during performances and rehearsals).

National Theater:

- One of America's oldest continually operating theatres, featuring national tours of Broadway favourites, pre-Broadway shows and American premieres.

The Shakespeare Theatre/Harman Center for the Arts:

- Home of the nation's foremost Shakespeare company. Presenting Shakespeare and other exciting classics in an intimate 449-seat theatre in downtown Washington's Penn Quarter arts district.

Verizon Center:

- Washington's 20,000-seat state-of-the-art sports arena is home to the NBA Wizards,

the NHL Capitals, the WNBA Mystics and the Georgetown Hoyas, and is also a popular venue for concerts. The Center is an interactive mix of sports entertainment, sports history, sports retail and the flagship Discovery Channel Store. It also houses the National Sports Gallery/Museum, with high-tech interactive sports games and nostalgic memorabilia of American sports history.

National Geographic Society:

- Explorers Hall features Geographica, an interactive exhibit about the earth and the fragile balance among its inhabitants; the Earth Station One, a 72-seat amphitheatre that simulates an orbital flight; and changing exhibits. Admission is free.

National Archives:

- Home to the original Declaration of Independence, the Constitution, the Bill of Rights and more than three billion historical records.

Jefferson Memorial:

- Located on the Tidal Basin, directly south of the White House, lies the memorial to the third President of the United States. As stated on his tombstone, Jefferson was "Author of the Declaration of American Independence, of the Statute of Virginia for Religious Freedom and Father of the University of Virginia."

Petersen House:

- The rooming house where President Lincoln was carried to after being mortally wounded at Ford's Theatre. He passed away the next morning in the home, then belonging to William Petersen, a German-born tailor. It has since been restored to appear as it did when Lincoln passed away, April 15, 1865.

National Museum of Crime and Punishment:

- This fascinating museum features exhibits detailing the history and consequences of crime, as well as equipment and technology used in crime fighting. Visitors may also find themselves in the midst of a CSI experience, or in the studio of America's Most Wanted.

Newseum:

- This 6-storey interactive museum features exhibits, galleries and theatres showcasing the world of media and news.

The Bureau of Engraving and Printing:

- Fun for all ages, tours include various phases of currency production with educational exhibits. Guests may even purchase uncut sheets of currency, small bags of shredded currency and engraved prints. The Bureau, established in 1862, also prints White House invitations, Treasury securities, identification cards, naturalisation certificates and other special security documents.

Within a 15-minute drive of the Hotel

Library of Congress:

- A vast collection of books and historical objects, including more than 113 million items, is housed in this richly decorated Italian Renaissance palace. This collection is available as a valuable resource to members of Congress and to all Americans engaged

in scholarly research. Free guided tours available.

Supreme Court of the United States:

- The highest court in the land and the final arbiter in the American justice system. The public is welcome to sit in the courtroom and listen as cases are argued before the justices.

National Gallery of Art:

- This gallery features a permanent collection of European and American paintings, sculpture, decorative arts and work on paper, as well as changing exhibitions of art from around the world. Admission is free.

Marine Corps War Memorial:

- A symbol of this grateful Nation's esteem for the honoured dead of the U.S. Marine Corps. While the statue depicts one of the most famous incidents of World War II, the memorial is dedicated to all Marines who have given their lives in the defense of the United States since 1775.

Within a 20-minute drive of the Hotel

RFK Stadium:

- Home of Major League Soccer team DC United and a venue for numerous musical concerts and seminars.

Nationals Park:

- Home of Major League Baseball team Washington Nationals.

Within a 40-minute drive of the Hotel

FedEx Field:

- Home of the National Football League's Washington Redskins and a venue for major outdoor concerts.

Within a 1-hour drive of the Hotel

Oriole Park at Camden Yards:

- Considered among the most interesting and well-designed baseball fields ever built, the stadium is the home of Major League Baseball's Baltimore Orioles.

CONFERENCE FACILITIES OVERVIEW

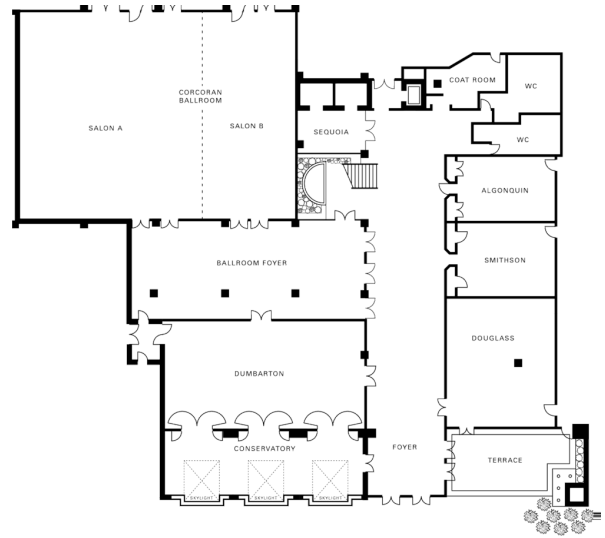
Total Space	17,590 sq.ft. 1,634 m ²
Largest Ballroom	4,602 sq.ft. 428 m ²
Meet and Feed (max. capacity)	450
Breakouts	6
Banquet (max. capacity)	450
Outdoor Banquet (max. capacity)	100
Private Dining (max. capacity)	22

CONFERENCE FACILITIES

At Four Seasons, sunlit, technologically sophisticated choices occupy more than 13,400 square feet (1,245 square metres) of space, including seven rooms that can adapt to any Washington, DC, meeting or banquet. Two private restaurant dining rooms add to the options for intimate gatherings. A small terrace overlooking the C&O Canal can be used throughout most of the year.

Count on Washington's most experienced assistance for complete conference planning, including full-service event planning for weddings, bar/bat mitzvahs, galas and socials. Along with Four Seasons cuisine, the Hotel's expert planners ensure that every memorable detail is a success.

Function and meeting rooms



TECHNICAL ASSISTANCE

A small user-friendly touch-screen control panel is available in each meeting room, allowing guests to customise audiovisual settings for their function. On-site audiovisual staff can accommodate all technical needs from a supply of state-of-the-art equipment. The Hotel continually updates its presentation equipment and keeps pace with changing technology.

- Guests can choose from a selection of 20 pre-programmed lighting settings or program their own lighting requirements
- Audio preferences can be programmed to allow for soft background music or to simply adjust volumes for audiovisual presentations
- Wired or wireless Internet access in meeting rooms

MUSIC AND ENTERTAINMENT

The catering managers will be happy to assist with arranging any type of music or entertainment for guest receptions.

RECEIVING AND MAINTENANCE

The Hotel features a full-service shipment and receiving office. All packages should be sent to the attention of the group's name and its Conference Service Manager. They will be stored in a separate conference storage area. Limited space is available for the storage

of large items. Please time shipping to the date of the group's arrival. Also, please schedule materials to arrive no earlier than 3 days prior to your meeting.

Receiving dock

The loading dock is easily accessible and is located at 1109 29th Street, NW. Freight elevators offer direct access to the Ballroom level.

Maintenance

The Engineering Department is available 24 hours a day for general assistance with lighting, room temperature control and minor repairs.

DESTINATION MANAGEMENT

Your Conference Services Manager can help accommodate your group's special requests. For detailed information, please contact the Hotel directly. In addition, we recommend the following destination management company:

Capital City Events, Inc.

Full-service destination management and special events

Telephone: 1 (301) 564-6200

Web site: www.capitalcityevents.com

BUSINESS SERVICES

Around the clock, Four Seasons Hotel Washington, DC can assist you with business, entertainment or travel arrangements through the business centre and resourceful, multilingual Concierge.

Time-saving services provided for business travellers include Newspaper Direct, same-day, digitally printed editions of approximately 100 newspapers worldwide, and Travel Light, which invites frequent guests to store personal belongings at the Hotel so the items may be conveniently delivered to the guest's room prior to subsequent visits.

- 24-hour business centre
- Audiovisual equipment
- Cellular telephones
- Computers
- Secretarial service
- Translation and interpretation service
- Video conferencing
- Wired or wireless Internet access in meeting rooms

SPOUSE PROGRAMMES

The Hotel offers a wide range of programmes to suit all tastes.

On-site:

- Spa program/Day of fitness and beauty in the Four Seasons Fitness Club and Spa
- Personal trainer session
- Aerobics classes
- Cooking classes with private chef
- Individual, private massage therapy
- Exclusive tea party
- Private dinner party in a suite with personalised entertainment

Off-site:

- Docent tour of the National Gallery of Art
- Trolley tour of Old Town Alexandria
- Private, after-hours shopping trip
- Visit to George Washington's home, Mount Vernon
- Moonlight boat trip on the Potomac
- Concert at the Kennedy Center following by a dessert reception

CHILDRENS AND FAMILY PROGRAMMES

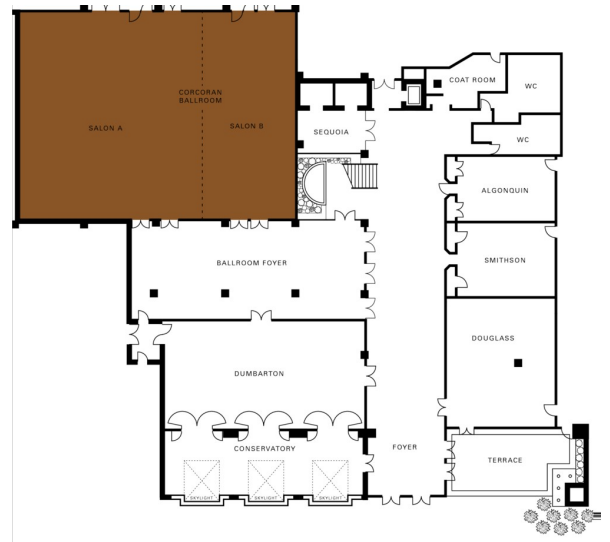
The Concierge will help children and their parents find things to see and do that will create special memories for the entire family. Some ideas may include a visit to the White House, National Zoo, National Gallery of Art, National Geographic Society, National Air and Space Museum or the National Mall.

CORCORAN BALLROOM

Dimensions	59 x 79 ft 18 x 24 m
Size	4,602 sq.ft. 427 m ²
Height	14.3 ft 4.4 m

Capacities

Classroom	270
Theatre	500
Reception	500
Banquet Rounds	450
Boardroom	80

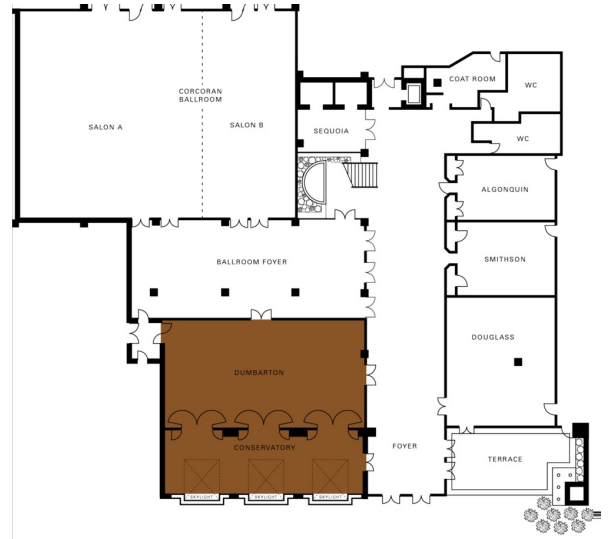


DUMBARTON CONSERVATORY

Dimensions	50 x 57 ft 15 x 17 m
Size	2,850 sq.ft. 265 m ²
Height	9.10 ft 3 m

Capacities

Classroom	170
Theatre	300
Reception	300
Banquet Rounds	220

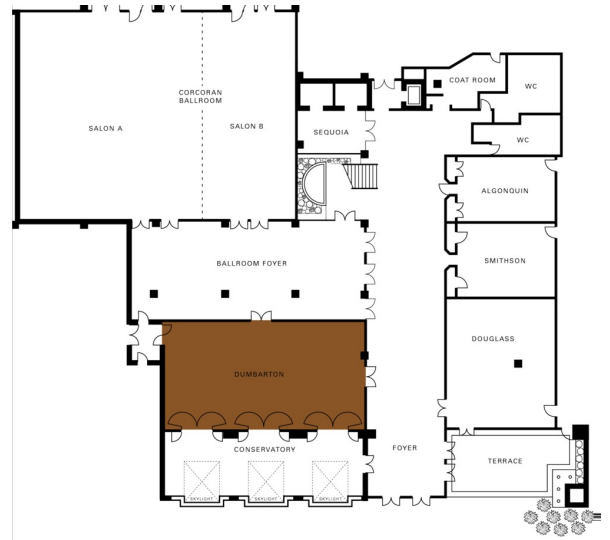


DUMBARTON ROOM

Dimensions	32 x 57 ft 10 x 17 m
Size	1,824 sq.ft. 169 m ²
Height	9.8 ft 3 m

Capacities

Classroom	110
Hollow square	48
U Shape	44
Theatre	200
Reception	200
Banquet Rounds	140

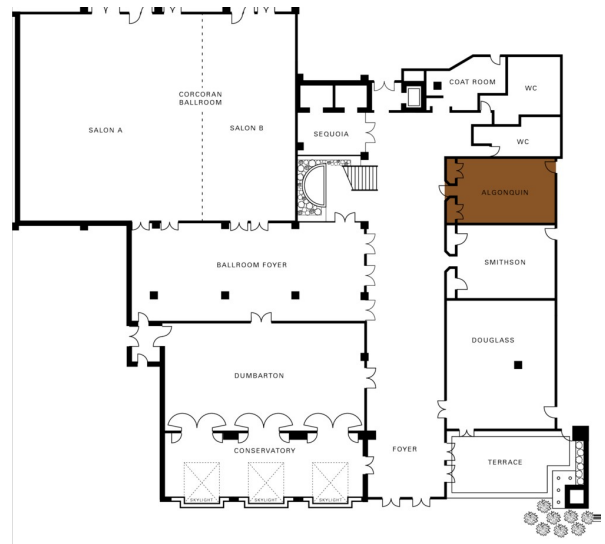


ALGONQUIN ROOM

Dimensions	18 x 29 ft
	5.5 x 9 m
Size	522 sq.ft.
	48 m ²
Height	10 ft
	3 m

Capacities

Classroom	30
Hollow square	28
U Shape	24
Theatre	50
Reception	50
Banquet Rounds	40

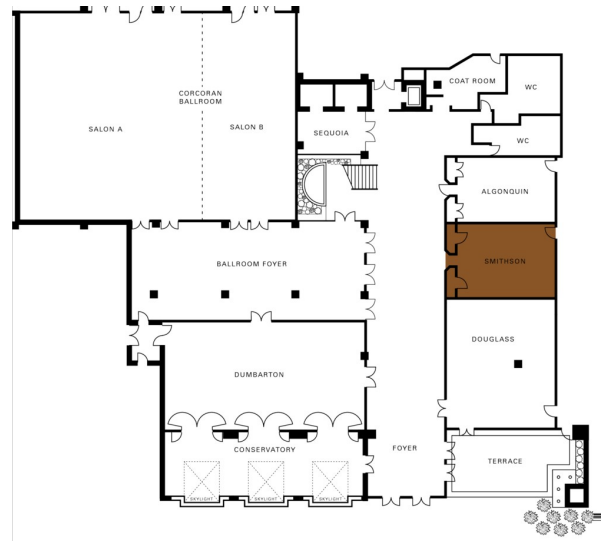


SMITHSON ROOM

Dimensions	22 x 29 ft
	7 x 9 m
Size	638 sq.ft.
	59 m ²
Height	10 ft
	3 m

Capacities

Classroom	30
Hollow square	28
U Shape	24
Theatre	50
Reception	50
Banquet Rounds	40

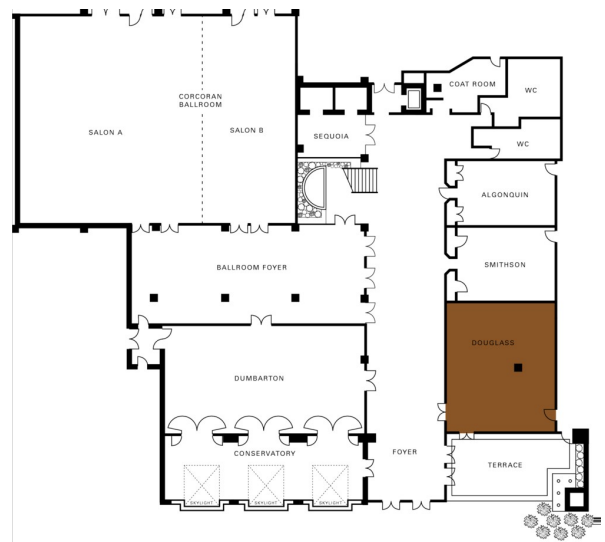


DOUGLASS ROOM

Dimensions	31 x 38 ft
	9.5 x 11.5 m
Size	1,178 sq.ft.
	109 m ²
Height	10 ft
	3 m

Capacities

Classroom	45
Hollow square	35
U Shape	30
Theatre	75
Reception	100
Banquet Rounds	80

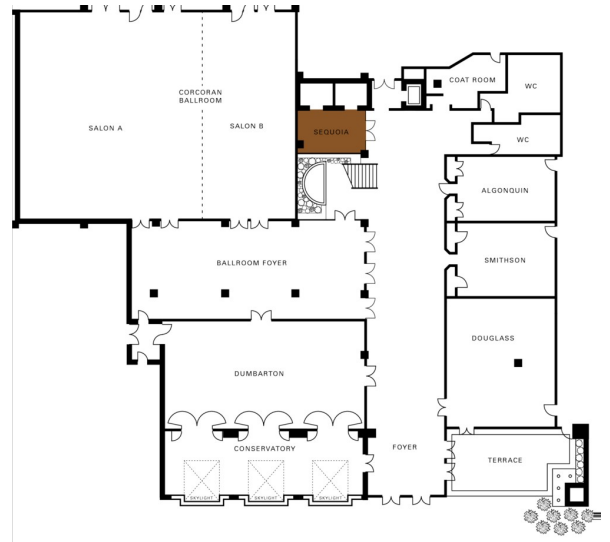


SEQUOIA

Dimensions	11 x 18 ft 3 x 5.5 m
Size	192 sq.ft. 18 m ²
Height	9.10 ft 3.2 m

Capacities

Theatre	14
Boardroom	12



GUEST ROOMS, SUITES AND PRIVATE RESIDENCES OVERVIEW

Four Seasons Hotel Washington, DC offers 222 luxury guest rooms – including 59 suites – with views including Georgetown and the historic Chesapeake and Ohio Canal. Situated in a quiet residential neighbourhood downtown, the mid-rise brick building is composed of separate east and west wings connected by a glass-enclosed garden walkway.

East wing quarters feature a chic, contemporary Parisian-style design by Pierre-Yves Rochon. Elegant West wing accommodations offer contemporary furnishings and décor that accent modern artwork. Together, they offer the experience of an exceptional DC luxury hotel.

French limestone or marble bathrooms thoughtfully incorporate signature Four Seasons touches. Most have a deep soaking tub, and all feature a glass-enclosed shower and, in a separate alcove, a WC with telephone. Technology ranges from LCD flat-screen HD televisions to high-speed wired and wireless Internet service.

<i>Room Category</i>	<i>#</i>	<i>Beds</i>	<i>Size</i>		<i>View</i>
			<i>(sq ft)</i>	<i>(m²)</i>	
- Grand Premier Room	70	1 King or 2 double	625	58	Historic Georgetown, garden courtyard or 29th Street
- Premier Room	43	1 King or 2 double	485	45	Historic Chesapeake and Ohio Canal, Rock Creek Park or garden courtyard
- Deluxe Room	27	1 King	385	36	Rock Creek Park, historic C&O Canal or garden courtyard
- Accessible Grand Premier Room		1 King	625	58	Historic Georgetown, garden courtyard or 29th Street
- Accessible Deluxe Room		1 King	385	36	Rock Creek Park, historic C&O Canal or garden courtyard
- Royal Suite	1	1 King	4,000	371	Georgetown rooftops
- Presidential Suite – West Wing	3	1 King	1,924	179	Historic Chesapeake and Ohio Canal and garden courtyard
- Presidential Suite – East Wing	1	1 King	1,270	118	Historic Chesapeake and Ohio Canal and Rock Creek Park
- Capital Suite	14	1 King	1,100	102	Historic Georgetown, garden courtyard or 29th Street
- Georgetown One-Bedroom Suite	9	1 King	900	84	Historic Georgetown, historic Chesapeake and Ohio Canal or garden courtyard
- Premier Suite - West Wing	19	1 King	800	74	29th Street
- Premier Suite – East Wing	10	1 King	600	56	Garden courtyard

Guest Room Overview

Guest rooms in the east wing overlook Rock Creek Park, the historic C&O Canal or the garden courtyard. Deluxe Rooms, the larger Premier Rooms and more spacious Grand Premier Rooms all reflect Four Seasons comforts. Generously sized Grand Premier Rooms in the west wing have floor-to-ceiling views of historic Georgetown, the courtyard or 29th Street. Contemporary Premier Suites – East Wing offer separate living and sleeping spaces and overlook the garden courtyard. Premier Suites – West Wing offer

further space in a studio-style setting with a bedroom and semi-private sitting/working area.

Suites Overview

With separate areas for sleep, work and relaxation, Georgetown One-Bedroom Suites are spacious and elegant. Bright, contemporary Potomac Suites provide a corner view of the historic Chesapeake and Ohio Canal and Rock Creek Park. In the west wing, richly appointed Capital Suites are fully equipped for business or leisure.

Presidential Suites, redesigned by Anderson/Miller, provide opulent, well-defined space. Two in the east wing command corner positions, with abundant natural light through floor-to-ceiling windows. Three in the west wing are significantly larger and feature views of the canal or garden courtyard. Suites can be configured with up to three bedrooms in the east wing and four in the west.

Overlooking all of Georgetown is the new Royal Suite with its landscaped terrace – which represent the largest, most lavish suite in Washington. Exclusive Royal Suite amenities range from an in-suite exercise room to windows designed with bullet-resistant glass. This one-bedroom suite can be configured with as many as eight bedrooms, which can be set apart as a private, self-contained enclave.

PREMIER SUITE - WEST WING

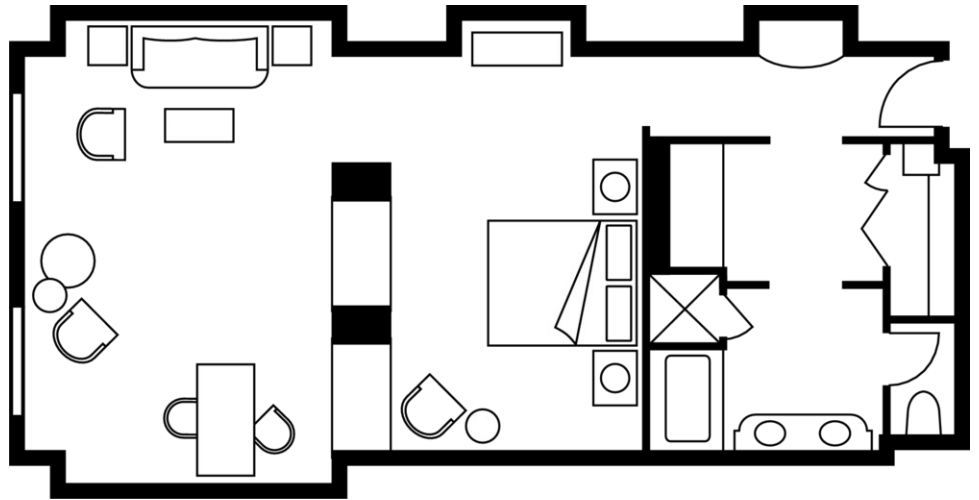
Number 19
Beds One king bed
Size 800 sq ft
74 m²

Location

West wing, 2nd to 4th floors

View

29th Street



DELUXE ROOM

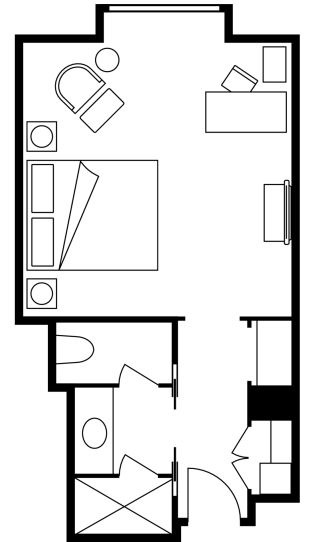
Number 27
Beds King bed
Size 385 sq ft
36 m²

Location

East wing, 2nd to 6th floors

View

Rock Creek Park, historic C&O Canal
or garden courtyard



PRESIDENTIAL SUITE - WEST WING

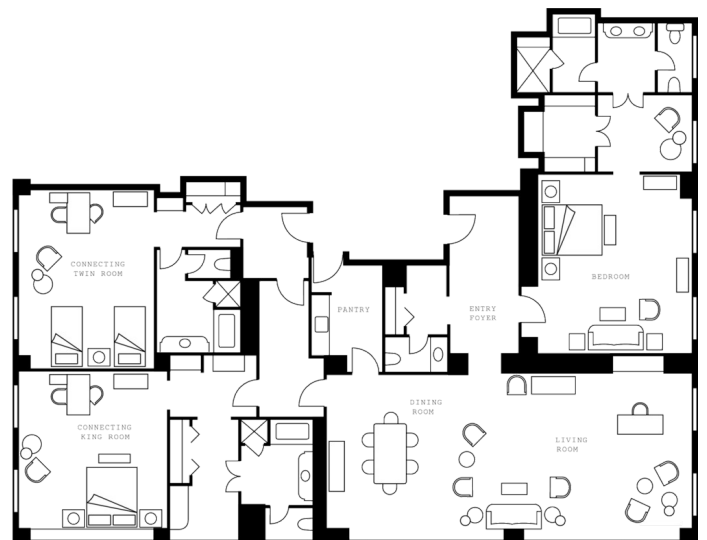
Number 3
Beds King bed
Size 1,924 sq ft
179 m²

Location

West wing, 3rd and 4th floors

View

Historic Chesapeake and Ohio Canal
and garden courtyard



AMENITIES

- All news cable network
- CD player
- Clock radio
- Complimentary newspaper
- Cordless telephone(s)
- Down duvets
- Down pillows
- DVD player
- Fax machine on request
- Hair dryer
- Hypo-allergenic bedding on request
- In-room safe
- iPod docking station
- Iron and ironing board
- Multi-line telephone(s) with voicemail
- PlayStation on request
- Refrigerated private bar
- Thick terry bathrobes
- Twice-daily housekeeping service
- Wired or wireless Internet access

GUEST SERVICES

- 24-hour In-Room Dining
- 24-hour laundry/dry-cleaning/pressing
- 24-hour multilingual Concierge
- Complimentary overnight shoeshine
- Limousine service
- Non-smoking rooms
- One-hour pressing
- Salon services
- Services and amenities for younger guests
- Umbrellas
- Valet parking
- CD/DVD library

VIP GIFTS AND WELCOME AMENITY

On your behalf, we can arrange an almost unlimited selection of welcome gifts and amenities to suit the occasion, the recipient and your budget. Ideas include special homemade food items, wines and other beverages, gift items from our Fitness Club, Washington, DC, mementos, custom items such as one-of-a-kind glassware or specialty items associated with the event or the guest.

DINING HOURS OF OPERATION

<i>Seasons</i>	
<i>Brunch</i>	
Sunday	10:30 am - 2:30 pm
<i>Breakfast</i>	
Monday to Friday	6:30 am - 10:30 am
Saturday and Sunday	7:00 am - 10:30 am
<i>Lunch</i>	
Saturday	10:30 am - 2:30 pm
.....	
<i>BOURBON STEAK</i>	
<i>Lunch</i>	
Monday to Friday	11:30 am - 2:30 pm
<i>Dinner</i>	
Sunday to Thursday	6:00 pm - 10:00 pm
Friday and Saturday	5:30 pm - 10:30 pm
.....	
<i>The Lounge at BOURBON STEAK</i>	
Sunday	2:30 pm - midnight
Monday to Thursday	11:00 am - midnight
Friday	11:00 am - 1:00 am
Saturday	2:00 pm - 1:00 am
.....	
<i>In-Room Dining</i>	
<i>Breakfast</i>	
Every day	6:00 am - 11:30 am
<i>All-day dining</i>	
Every day	11:00 am - 6:00 am
<i>Grill menu</i>	
Every day	noon - 10:30 pm

DINING

A prime destination for Georgetown fine dining, BOURBON STEAK is the creation of Michael Mina, one of America's top chefs, and features his butter-poached meats and poultrys, classic seafood dishes and signature salads for lunch and dinner. World-renowned architect David Rockwell matched the innovative cuisine with a contemporary setting for the DC restaurant and its adjacent lounge. Seasons remains Washington's spot for power breakfasts and Sunday brunch.

RESTAURANTS

Seasons

Lush gardens and walls of windows create an airy, sophisticated setting for an exquisite dining experience at this award-winning restaurant in Washington, DC. Under the direction of Executive Chef Doug Anderson, the menu at Seasons is a tempting mix of regional and seasonal ingredients and delicious flavours. While dining, guests can enjoy the use of a complimentary Kindle Reading Device and choose from over 80 different newspapers gathered from 15 countries.

- Indoor seating: 121; plus 23 guests in the Seneca private dining room, and 10 in the Arbor private dining room.
- Outdoor seating: 20

BOURBON STEAK

Daytime power dining is important in the nation's capital, and BOURBON STEAK's creator, Michael Mina, and Executive Chef Adam Sobel have designed distinctive lunch and dinner menus to suit the rhythm of Washington, DC. Set in the heart of Georgetown and featuring menus that are sourced from the east and west coasts, the restaurant offers a uniquely DC fine-dining experience sure to impress.

- Cuisine: Contemporary American fare with a focus on seasonal ingredients.
- Size: 5,400 sq ft / 502 m²
- Indoor seating: 144, plus up to 22 guests in the private dining rooms
- Outdoor seating: 32

LOUNGES

The Lounge at BOURBON STEAK

Relax before your meal and indulge in a cocktail and a few tempting dishes at the end of the day. The Lounge at BOURBON STEAK is the ideal Georgetown lounge for meeting friends and colleagues.

- Size: 5,400 sq ft / 502 m²
- Indoor seating: 44

RECREATION FACILITIES

Discover the rejuvenating pleasures of our three-level Four Seasons Fitness Club and Spa – a 12,500-square-foot (1,161-square-metre) oasis of wellness and pampering.

SPA SERVICES

For those seeking a luxury spa experience, the Spa at Four Seasons Hotel Washington, DC, provides a relaxing oasis in gracious Georgetown. A tranquil retreat for Hotel guests as well as a luxury day spa for DC residents, it features treatment rooms that are spas in microcosm, with private steam shower and whirlpool.

After your massage or body treatment, our relaxation lounge offers you a quiet refuge in which to prolong your sense of tranquillity, all in the heart of Washington, DC.

- Size: 3,500 sq ft / 325 m²
- Number of treatment rooms: 8
- Products: ANSR: BEAM, NuFACE, Envirosax, 21 Drops, Naturopathica, Kate Somerville, LaNatura, HOMMAGE, Alora Ambiance, Dogeared, Kashwére, FS Candles by Soy Beam, Omgirl, elizabethW, CARITA, Eberjey, Renée Rivera, viv&ingrid, I am by Danica, Jack Black, dream yoga mats, Under Armour, Cris Notti sleep masks

FITNESS FACILITIES

Designed on three levels, with an outdoor terrace, the Health Club at Four Seasons Hotel Washington, DC, offers a wide range of five-star fitness and pampering options for DC hotel guests and residents. This state-of-the-art facility features a relaxation lounge on each level, as well as a comprehensive array of cardiovascular equipment, each with a television, DVD player, CD player, radio and individual headset.

Other features include an indoor saltwater lap pool, eucalyptus-scented steam room, whirlpool, as well as an aerobics studio.

- Size: 12,500 sq ft / 1,161 m²

POOL

The two-lane indoor saltwater lap pool of our five-star, Washington, DC, hotel is set beneath a soaring skylight in the vaulted ceiling. Guests can reserve a lap lane and swim undisturbed.

Within easy reach of our Washington, DC, five-star hotel are other options for sports or active enjoyment. For further ideas or details, our Concierge is always pleased to advise and assist you.

GOLF

Stonewall Golf Club

Challenge yourself on the Tom Jackson-designed, par-72 course at Stonewall Golf Club at Lake Manassas. Regarded as one of Northern Virginia's finest, this golf club is open to the public, with daily fees. Experience some history as you play; this course was named after a southern hero, Confederate Brigadier General Thomas J. "Stonewall" Jackson, and parts of the course wind through the Civil War's "Carolina Trail." Over 7,000 yards of greens stretch through open, lakeside land on the front nine and heavily wooded hills on the back nine, with five immaculately maintained sets of tees to challenge every level of player. Soft spikes are required.

TENNIS

Rock Creek Park Tennis Center

The Rock Creek Park Tennis Center has five indoor courts and 25 outdoor courts (available in the summer only). Ten of these courts have hard surfaces and 15 are clay surfaces. The hard-surface courts are lit for night play.

LOCAL ACTIVITIES

- Docent tour of the National Gallery of Art
- Trolley tour of Old Town Alexandria
- Private, after-hours shopping trip
- Visit to George Washington's home, Mount Vernon
- Moonlight boat trip on the Potomac
- Concert at the Kennedy Center followed by dessert reception

www.fourseasons.com/washington

Rooms	Dimensions		Size		Height		Classroom	Hollow square	U-shape	Theatre	Reception	Banquet rounds	Conference/ boardroom
	(ft)	(m)	(sq ft)	(m2)	(ft)	(m)							
- Corcoran Ballroom	59 x 79	18 x 24	4,602	427	14.3	4.4	270	-	-	500	500	450	80
- Corcoran Ballroom Salon A	52 x 59	15.8 x 18	3,068	285	14.3	4.4	200	80	112	300	300	250	60
- Corcoran Ballroom Salon B	26 x 59	7.9 x 18	1,534	142	14.3	4.4	120	48	44	200	200	140	40
- Corcoran Ballroom Foyer	28 x 69	8.5 x 21	1,932	179	10	3	-	-	-	-	300	-	-
- Dumbarton Conservatory	50 x 57	15 x 17	2,850	265	9.10	3	170	-	-	300	300	220	-
- Dumbarton Room	32 x 57	10 x 17	1,824	169	9.8	3	110	48	44	200	200	140	40
- Algonquin Room	18 x 29	5.5 x 9	522	48	10	3	30	28	24	50	50	40	26
- Smithson Room	22 x 29	7 x 9	638	59	10	3	30	28	24	50	50	40	26
- Douglass Room	31 x 38	9.5 x 11.5	1,178	109	10	3	45	35	30	75	100	80	35
- Sequoia	11 x 18	3 x 5.5	192	18	9.10	3.2	-	-	-	14	-	-	12
- Seasons	61 x 80	18 x 24	4,190	386	8.8	2.7	-	-	-	-	350	150	-