



## Quick Reference Guide

---

Last updated May 3, 2012 | For additional information please contact the hotel directly

---

Four Seasons Hotel Vancouver  
791 West Georgia Street, Vancouver, British Columbia, V6C 2T4, Canada  
Tel 1.604.689.9333 | Fax 1.604.684.4555

[www.fourseasons.com/vancouver](http://www.fourseasons.com/vancouver)



791 West Georgia Street  
Vancouver, British Columbia  
V6C 2T4, Canada  
Tel 1.604.689.9333  
Fax 1.604.684.4555

#### AIRPORT

- Vancouver International Airport (YVR): 30 minutes (13 kilometres/8 miles)

#### TABLE OF CONTENTS

- 2 *Introduction*
- 5 *Destination*
- 12 *Conference Facilities*
- 23 *Guest rooms, Suites and Private Residences*
- 28 *Dining*
- 29 *Recreational Facilities*
- 31 *Incentive Activities*
- 34 *Appendix: Conference Chart*

For a generation, its thoughtful, experienced care has earned Four Seasons a reputation as Vancouver's most welcoming hotel. Now, a substantial \$20 million renovation has refreshed that welcome with relaxed urban style inspired by British Columbia's natural beauty. Four Seasons is central to the business district, Convention Centre, shopping and to the vibrant arts and entertainment scene.



Rising above the heart of downtown, Four Seasons Hotel Vancouver's 373 guest rooms – including 67 suites – are amongst the most spacious in the city. Reinvented in almost every detail, from luxurious linens to all-new electronics and local Canadian artwork, they are bright, contemporary and, as always, supremely comfortable.

Dine in the dynamic ambience of award-winning YEW restaurant + bar, one of the city's favourite destinations for lunch, dinner or evening cocktails.

For recreation, the health club features an indoor-outdoor pool, a complete fitness centre and outdoor garden and patio areas for a true oasis within the city. Relax with a massage in the privacy of your room. Guests can quickly update their 'do at blo Blow Dry Bar, the

Hotel's hip new blow dry salon. In the summer, children aged 5 to 12 will enjoy the Kids in the City programme, including daily activities, as well as PlayZone for kids of all ages – some of the many reasons Four Seasons is such a family-friendly experience.

Year-round golf and glacier skiing are a short trip from Vancouver, or can be arranged in concert with Four Seasons Resort Whistler. Both destinations play host to the 2010 Winter Olympic and Paralympic Games.

Unrivalled service from long-tenured staff continues to make Four Seasons the first choice for business or social occasions – a reputation enhanced by our fresh new décor. The 2,405 square metres (25,883 square feet) of function space adapts readily for any gathering, from a confidential meeting for eight to a gala reception for up to 800.

#### TRANSPORTATION

All major domestic and international airlines serve Vancouver International Airport, located approximately 30 minutes south of downtown Vancouver. Limousines, taxis, buses and car rentals are all available, and our Concierge would be delighted to assist you with your travel plans. Please note that all rates are quoted in Canadian dollars and may be subject to change.

Note: The main entrance of Four Seasons Hotel Vancouver is located on Howe Street, which is a one-way street. Guests using an electronic navigation system to locate the Hotel should input "650 Howe Street" to arrive at the Hotel's front entrance.

#### Limousines

If you prefer to travel in comfort and style, we suggest reserving a luxurious private car and driver to meet you upon your arrival in Vancouver. Sedans, stretch limousines, minivans and sport-utility vehicles can be arranged. Your driver will identify himself to you by carrying a sign with your name on it and will assist you with your luggage as you exit the building. A credit card guarantee is required for all bookings, and a confirmation will be faxed to you. For assistance, please contact our desk at (604) 844-6718.

#### Aerocar – standby limousine service

Aerocar has a stand at both the domestic and international terminals. Service is offered upon arrival on a first-come, first-served basis. Options include a sedan or stretch limousine for six or eight passengers.

#### Taxis

Taxis are readily available outside both terminals, 24 hours a day. Taxis charge a metered rate based on time and distance travelled. Should you require a wheelchair-accessible taxi, simply inform one of the BC Corps Commissioners stationed at the taxi queue area on the curb and roadway.

#### Car rental companies

Car rental facilities are conveniently located just steps from the terminal on the ground floor of the parkade. Most companies provide vehicle pick-up and return services directly from these facilities. They include Budget Rent-a-Car, Avis Rent-a-Car, Alamo Rent-a-Car, National Car Rentals, Dollar Rent-a-Car, Hertz Canada and Thrifty Car Rental. Our Concierge will be happy to send you driving directions to our Hotel by fax or e-mail or to assist you with booking a rental car.

#### Canada Line – rapid transit system

The Canada Line provides rapid transit from the airport to downtown Vancouver in approximately 25 minutes. The Canada Line departs from the Link Building, which is located between the domestic and international terminals. You may purchase your ticket from a machine on the Canada Line platform before boarding the train. Fares are charged by zone; a two-zone fare is required to get to the Hotel. Canadian currency, credit cards and Canadian debit cards are accepted. Please note that there is a limited amount of room for luggage on the train.

The nearest stop to the Hotel is Vancouver Centre Station. From the station, there are two walking routes:

- Follow the escalators towards W. Georgia Street. Leave the station, turn left and proceed to the intersection. The Hotel is located directly across the street.
- Remain underground and proceed to the Pacific Centre Mall. The entrance to Pacific Centre will be on your immediate left after heading up the escalators from the platform level. Follow the mall corridor until you reach the second set of escalators. Go up to the next level. The entrance to the Four Seasons Vancouver Hotel lobby will be on your left.

---

---

#### WEATHER CHART

---

Month	°C		°F	
	Highs/Lows	Highs/Lows	Highs/Lows	Highs/Lows
January	6	/ 0	43	/ 32
February	8	/ 1	46	/ 34
March	10	/ 3	50	/ 37
April	13	/ 5	55	/ 41
May	16	/ 8	61	/ 46
June	19	/ 11	66	/ 52
July	22	/ 13	72	/ 55
August	22	/ 13	72	/ 55
September	18	/ 10	64	/ 50
October	14	/ 6	57	/ 43
November	9	/ 3	48	/ 37
December	6	/ 1	43	/ 34

---

#### DESTINATION

Although English sailor Captain George Vancouver landed on its beaches in 1792, the city of Vancouver really began nearly 100 years later when the Canadian Pacific Railway extended its line 20 kilometres (12 miles) westward from Port Moody to take advantage of a better harbour and terminal site. Today, Vancouver is an international Pacific Rim city known for its majestic mountains, beautiful parks and beaches and thriving business community.

The towering Coast Mountains and the shimmering Pacific Ocean create an unbeatable urban setting for a city that Mercer Consulting described in 2009 as one of the top cities in the world for quality of life. Canada's third-largest city, this bustling port of 2.3 million enjoys rich cultural and ethnic diversity. Exceptionally safe and clean, Vancouver reflects both the natural grandeur of its surroundings and the genuine warmth of its residents – two elements that make Vancouver “Spectacular by Nature.”

In Vancouver's commercial core, Four Seasons Hotel Vancouver is one block from Robson Street, the city's renowned shopping corridor, and minutes from attractions such as Granville Island Market, Gastown and Stanley Park. The city's premier indoor fashion mall, Pacific Centre, is at your doorstep. Guests at the Hotel will enjoy indoor access to the new high-speed Canada Line airport train – offering the most convenient link between downtown Vancouver and the airport.

#### WEATHER

Vancouver has a temperate marine climate year-round. Vancouver's lushness can partially be explained by the fact that the city rarely receives snow. However, deep powder snow can be found during the winter months on the local mountains just 30 minutes from the city centre.

#### LOCAL ATTRACTIONS AND ACTIVITIES

At Four Seasons, you enjoy a unique vantage point from which to explore the sights, sounds and experiences around you. We hope the highlights of local attractions below help simplify your planning. Please let us know how else we can assist you.

Note: For guests travelling to the Hotel from January 1, 2010 until March 31, 2010, please contact the Concierge for current information regarding local attractions.

#### Onsite

##### Pacific Centre:

- A central downtown experience that touches every aspect of life, from fashion to food, with boutique-style stores that stretch over three city blocks. Boutiques, restaurants and specialty stores include Holt Renfrew and over 100 other stores. Pacific Centre is located directly beneath the Hotel at the centre of the city.

*Within a few minutes walk of the Hotel*

##### Vancouver Art Gallery:

- The fine arts of past and present centuries are on year-round exhibit in Vancouver's most beautiful heritage building. Located at Robson Square in the heart of Vancouver, the Vancouver Art Gallery's exterior is a 19th-century architectural jewel. The

architecturally distinguished four-level gallery features regularly changing exhibitions of paintings, drawings, graphic arts, photography, sculpture and video addressing both historical and contemporary issues. A portion of the permanent collection is always on show, together with paintings and drawings by Canadian artist Emily Carr. Regular tours, lectures and family workshops are available, and the gallery is wheelchair accessible.

Bill Reid Gallery:

- Promoting Northwest Coast Art, the Gallery primarily collects and exhibits works of contemporary Northwest Coast Aboriginal artists. Also featured are other Canadian and international artists focusing on Aboriginal arts.

*Within a 5-minute walk of the Hotel*

Orpheum:

- Completely restored and refurbished in 1976 with first-class acoustics, the Orpheum is one of the North America's finest heritage theatres. The permanent home of the highly acclaimed Vancouver Symphony, the Orpheum is also host to a variety of pop, classical, choral and chamber concerts.

Robson Street:

- The diverse stretch of stores is every shopper's dream. Walking is the best way to view this exciting and bustling stretch of shops and restaurants, which is a meeting place for culture, food and fashion. Retailers include Zioni, Fila, Swatch, Saatchi & Saatchi, Aritzia, Banana Republic, Zara, A/X Armani Exchange, BCBG, Danier Leather, Club Monaco, Guess, and Buffalo. Hours vary; please see the Concierge for details.

Alberni Street:

- Alberni Street is quickly becoming Vancouver's hub for elite fashion, retail and restaurants. Notable haute couture retailers include Hermes, Burberry, Betsey Johnson, Calvin Klein, Brooks Brothers and Tiffany & Co.

*Within a 10-minute walk of the Hotel*

B.C. Sports Hall of Fame and Museum:

- Home to British Columbia's most extensive collection of artifacts and archival materials chronicling the province's professional and amateur sports and recreation history. Multimedia exhibits showcase the province's Olympic, Commonwealth, Stanley Cup and Grey Cup champions. The heroic journeys of B.C. disabled athletes Terry Fox and Rick Hansen are commemorated in dedicated galleries. Hands-on exhibits allow visitors the chance to test their skills at climbing, throwing or racing like the pros.

Queen Elizabeth Theatre:

- Built in 1959, the Theatre boasts one of the largest stages in Canada, approximately 730 square metres (7,900 square feet). Equipped with ultra-modern electronic lighting and acoustically tuned to distribute sound equally throughout the theatre, it is a perfect facility for Broadway shows, pop and rock concerts, operas and dance.

Vancouver Playhouse Theatre Company:

- A 647-seat theatre that adjoins the larger Queen Elizabeth Theatre. Established in 1962, the company has a rich history of premiering original Canadian plays.

The Centre in Vancouver for Performing Arts:

- Designed by internationally acclaimed Canadian architect Moshe Safdie, this awe-inspiring venue is considered to be one of the premier centres for the performing arts in western Canada. Originally named the Ford Centre for Performing Arts, this 1800-seat theatre offers uncompromising sightlines and impeccable acoustics.

*Within a 15-minute walk of the Hotel*

Marion Scott Gallery:

- A comfortable gallery with an international flavour, specialising in the arts of the Canadian Inuit and featuring Northwest Coast Native Art. Exclusive agents to British Columbian sculptors Alexander Schick.

General Motors Place:

- Home to the Vancouver Canucks, fans can enjoy the facility, described as the most advanced of its kind in North America. Other entertainment events are also scheduled here.

B.C. Place Stadium:

- Home to the Canadian Football League's B.C. Lions from June to late October, it also hosts many annual events and occasional entertainment productions.

Gastown:

- Several blocks of superbly restored buildings, cobblestone streets, the world's only steam-powered clock and many other charming features make Gastown a popular destination for shoppers and diners. A good place to find West Coast Native arts and crafts as well as a wide variety of Canadian items.

Yaletown:

- The rambling brick warehouses and loading docks have been transformed into a vibrant part of the city with its unique storefronts, artists' studios, spas, cafes, bistros and restaurants. Yaletown is becoming Vancouver's most diverse shopping district with home furnishings and decorations, fashions, jewellery, art, books, gourmet foods and a supermarket.

*Within a 20-minute walk of the Hotel*

Chinatown:

- The provincial government declared Chinatown a historic area in 1971. Since then, its buildings and unique character have been preserved and enhanced, giving Vancouver one of the largest Chinatowns in North America, second only to San Francisco's. The area features a commercial and market section and many Chinese restaurants.

*Within a 10-minute drive of the Hotel*

Vancouver Maritime Museum:

- The excitement and history of marine activity on the coast of British Columbia and in

the Port of Vancouver are recreated at the Vancouver Maritime Museum. Permanent and temporary exhibitions highlight exploration, sailing, fishing, maritime art and the development of the port. This museum is a must-see attraction for any model ship enthusiast. Climb aboard the St. Roch, one of Canada's first ice-breakers, and learn what was involved in navigating the Arctic.

Vancouver Museum:

- The Museum specialises in permanent and travelling exhibitions depicting the history of Vancouver, the history and art of Canada's Native peoples, and the decorative arts of Asia, Europe and North America.

Buschlen Mowatt Gallery:

- The Gallery features works by contemporary Canadian and international artists. It was the recipient of Vancouver's Best Gallery Award from *Vancouver* magazine.

Bau-Xi Gallery:

- Committed to Canadian contemporary art since 1965, spectators may view works by Canadian artists such as Jack Shadbolt, Sylvia Tait and Tom Smith.

Uno Langmann Limited:

- Celebrating over 30 years of business, the gallery features one of Vancouver's widest and most dynamic collections of select 17th-century to early 20th-century antiques and fine art, including landscape, still life, portrait and genre paintings by noted European and North American artists.

Stanley Theatre:

- A quaint, recently renovated art-deco style theatre, originally built in the late 1920s. It is the home of many vibrant, small, innovative productions. Contact the Concierge for details of current plays.

Bard on the Beach:

- A Shakespeare festival during the summer months held in giant tents in Vanier Park, overlooking picturesque English Bay.

Arts Club Theatre Company:

- Located on Granville Island, it offers dinner-theatre packages, as well as a popular licensed lounge with live bands and an outdoor patio.

Stanley Park:

- One of the largest and finest inner-city parks, covers 400 hectares (1,000 acres) of woodlands and offers nature trails, gardens, picnic sites and playing fields. Bordered by a 10-kilometre (6-mile) seawall that provides cycle and pedestrian paths, Stanley Park has three beautiful beaches, as well as miniature train rides, tennis courts, a petting zoo, pitch and putt, Native totem poles, fantastic restaurants and the Vancouver Aquarium Marine Science Centre. Ask the Concierge about renting bikes, trailers, tandems or roller blades.

Vancouver Aquarium Marine Science Centre:

- Located in Stanley Park, it is the home of beluga whales, dolphins, seals, sea otters and seabirds. Daily presentations and unparalleled underwater views provide an exciting

glimpse into the lives and behaviour of these engaging animals. See colourful crowds of bustling coral reef fish and circling sharks in the tropical galleries. Experience the sights and sounds of the walk-through Amazon rainforest, complete with lazy sloths, free-flying birds and small lizards and toads.

Science World:

- Try it! That's the invitation from Science World British Columbia. Touch a tornado. Step on sound and see exploding zucchinis. Lose your shadow. Find a beaver lodge. Stretch your mind in a distorted room and talk back to yourself in an echo tube. In addition, experience an awesome exhibit or show on the OMNIMAX domed screen.

Granville Island:

- Centrally located, this shopper's paradise offers the pleasant appeal of a bustling covered market and the presence of some of British Columbia's finest arts, crafts and dining make this island a favourite "people place." The island also has studios, galleries, playgrounds, water parks (summer only), marinas, museums and more, all within walking distance of each other.

H.R. MacMillan Space Centre:

- The Centre features a planetarium, virtual simulator, observatory and laser show, as well as live and audiovisual demonstrations, leading-edge technology, interactive exhibitions and multimedia programming.

Edgewater Casino:

- Located overlooking Vancouver's waterfront, Edgewater Casino offers gaming, dining and entertainment from sporting to red carpet events.

South Granville:

- Located on Granville Street between 6th and 17th Streets, South Granville offers high-end shopping and world-class dining, and showcases Vancouver's fine art.

*Within a 20-minute drive of the Hotel*

Capilano Suspension Bridge:

- Follow in the footsteps of millions of visitors who have ventured across the Capilano Suspension Bridge since 1889. The bridge sways 135 metres (450 feet) above the Capilano Canyon and 90 metres (295 feet) above the river. It has frequently been featured in movies, advertisements and magazines. This attraction offers breathtaking views, nature trails, history and forestry exhibits, native carvers, a gift store and food services.

Vandusen Botanical Gardens:

- Native and exotic plants are displayed among rolling lawns, tranquil lakes and woodlands. Children and adults alike will enjoy the Elizabethan hedge maze. Bird-watchers will appreciate more than 60 species of birds that live within the Garden premises.

Queen Elizabeth Park:

- This is the highest geographic point within downtown Vancouver. Take in the public gardens nestled in a former quarry, explore the geodesic conservatory and eat at

Seasons in the Park. Try a round of pitch and putt or frisbee golf (bring your own frisbee).

Metropolis at Metrotown:

- Includes a Multiplex theatre and 450 retail stores, and is only 20 minutes from the Hotel via the skytrain.

*Within a 25-minute drive of the Hotel*

Museum of Anthropology at the University of British Columbia:

- An exciting and comprehensive display of the unique and powerful art and icons of the West Coast Native peoples. It features a large collection of Haida and Kwakiutl carvings and totem poles, along with a collection of Asian and Pacific artifacts.

Grouse Mountain:

- Also known as "The Peak of Vancouver," it is located only 25 minutes from downtown and offers a host of mountain-top experiences for locals and vacationers. The Skyride Gondola whisks you to a vantage point of 1,128 metres (3,700 feet) for a superb view of the city. Throughout the winter months, skating, snowshoeing, cross-country skiing and sleigh-riding join skiing and snowboarding as winter fun for everyone. Visit the Hiwus feast house for an authentic Native cultural experience, go for a helicopter tour, visit the Theatre in the Sky or have a bite to eat in one of the restaurants. During the summer months, see the grizzly bears at the Refuge for Endangered Wildlife Shelter, watch a lumberjack show or try tandem paragliding.

*Within a 30-minute drive of the Hotel*

Cypress Mountain:

- The North Shore's Cypress Mountain, located about 25 kilometres (16 miles) from downtown Vancouver, is a ski area cradled between two mountains: Mount Strachan to the north and Black Mountain to the south. The two peaks soar above Vancouver, offering spectacular views of Howe Sound by day and the city lights by night. Cypress Mountain features 38 beginner, intermediate and advanced runs and 533 metres (1750 feet) of vertical – the highest of Vancouver's North Shore Mountains.

Mount Seymour:

- Located just 30 minutes from downtown Vancouver, Mount Seymour is renowned for its ski and snowboard school. Thousands of beginners have learned the ropes on Seymour's gentle terrain at the hands of certified ski and ride instructors. Mount Seymour is home to 340 metres (1115 feet) of vertical, with 21 runs and three chairlifts.

Hastings Park Racecourse:

- Thoroughbred races are held at Hastings Park Racecourse from April to October.

River Rock Casino:

- Located near Vancouver's International Airport and downtown core, River Rock Casino offers a taste of Las Vegas while visiting Vancouver. In addition to over 1,000 slot machines and 89 table games, the casino features the largest poker room in Canada. A variety of dining options and live entertainment are also available. The Casino is also accessible via Canada Line.

Chan Centre for the Performing Arts:

- Since its opening in the spring of 1997, the Chan Centre for the Performing Arts has earned an international reputation for its design and acoustics. Located on the University of British Columbia's campus, this cylindrical, multi-faceted facility has become a well-known landmark. It offers a variety of events, year round – from opera to jazz to world music.

*Within a 40-minute drive of the Hotel*

Lighthouse Park:

- Here, you will find Vancouver's last stand of old-growth forest. Climb the rocky beach, explore tidal pools and take in the enormous ancient trees.

*Within a 45-minute drive of the Hotel*

Shannon Falls:

- Located just off the Sea-to-Sky Highway, Shannon Falls is the third-highest in the province. Surrounded by parkland and near the well-known climbers' haven, Chief Mountain, this is an easy and beautiful half-day excursion.

*Within a 2-hour drive of the Hotel*

Whistler/Blackcomb:

- The spectacular natural setting of Whistler/Blackcomb offers a bounty of activities that make the resort an ideal getaway for people of all ages and interests. Skiing and snowboarding, of course, top the list. The sheer abundance of glades, bowls, steeps and powder keeps skiers and riders of every ability returning year after year. Now that both Whistler and Blackcomb Mountains are effectively one resort, the combined statistics are staggering: 29 square kilometres (11 square miles) of skiable terrain; 200-plus runs; an hourly high-speed lift capacity of 54,000 skiers and North America's highest vertical drop – 1,609 vertical metres (5,280 vertical feet). The world record-breaking PEAK 2 PEAK gondola offers a spectacular method of travel between the peaks of Whistler/Blackcomb, featuring breathtaking 360-degree views of the stunning peaks, seasonal changes and wildlife habitat. But skiing and snowboarding are only one part of the overall Whistler/Blackcomb experience. The uniquely Canadian ambience of Whistler village is a stellar draw for all year-round visitors, with its great shopping, non-stop nightlife, superb restaurants and tremendous variety of activities. As skiing is available all year round on the glacier, Whistler – home of the 2010 Winter Olympics – has become a year round destination. Imagine skiing in the morning and playing a round of golf in the afternoon at one of their three incredible golf courses. Or enjoy their brand-new mountain bike park, a ziptrekking tour or helicopter ride. You can reach Whistler/Blackcomb in approximately two hours by following the spectacular "sea-to-sky highway," or contact the Concierge to book a flight by helicopter or float plane for quicker access.

---

---

#### CONFERENCE FACILITIES OVERVIEW

Total Space	2,405 m <sup>2</sup> 25,883 sq.ft.
Largest Ballroom	517 m <sup>2</sup> 5,560 sq.ft.
Meet and Feed (max. capacity)	250
Breakouts	11
Banquet (max. capacity)	500
Outdoor Banquet (max. capacity)	120
Private Dining (max. capacity)	62

#### CONFERENCE FACILITIES

For over 30 years, no hotel in Vancouver has earned more enduring acclaim for its atmosphere, amenities and thoughtful personal service. And Four Seasons is always evolving. For example, to respond to growing environmental concerns, the Hotel worked to reduce the carbon footprint of its meetings. As a result, it was chosen to host the worldwide Greening the Hospitality Industry Conference in 2008.

Now, we welcome you to a new setting, rich in exotic woods and contemporary design detail, for exclusive events of any size. The Hotel's thoroughly renovated 2,405 square metres (25,883 square feet) of private, adaptable space includes 12 function rooms and the Park Ballroom, all equipped for the most advanced presentations and staging. Four Seasons also offers a one-of-a-kind landscaped outdoor terrace overlooking the city's downtown.

Superb cuisine, freshly prepared and beautifully presented, is evident on every table. Four Seasons service ensures that everyone, from the planner to the guest or delegate, enjoys individualised attention to the most minute detail.

#### Kosher cuisine

As the only hotel in Vancouver with a dedicated kosher kitchen, Four Seasons offers a particularly welcoming venue for the Jewish community. A qualified supervisor of kosher laws is on hand for each event, to oversee preparation of all food. Our kosher menu creates traditional specialties with delicious imagination.

#### Off-site catering

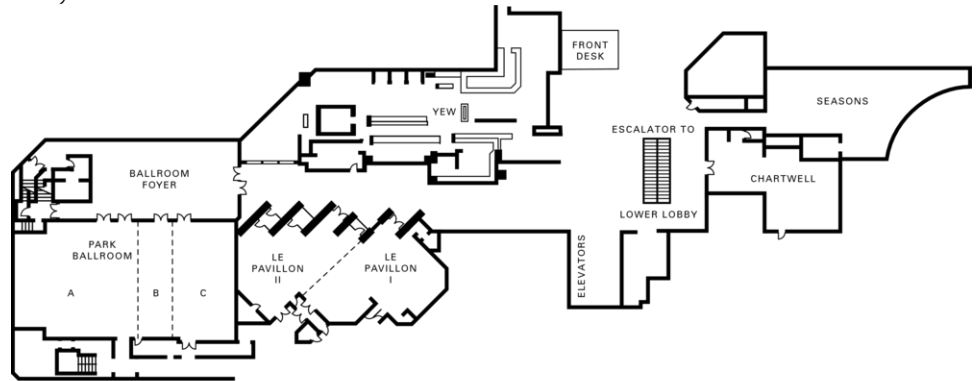
Four Seasons brings its renowned food, service and ambience to any location you select – with food freshly prepared at the location site whenever possible. Our customised menus excel at pleasing individual tastes, and we can provide elegant table settings, with each element thoughtfully chosen. Rely on impeccable, unobtrusive Four Seasons service.

#### Greener meetings

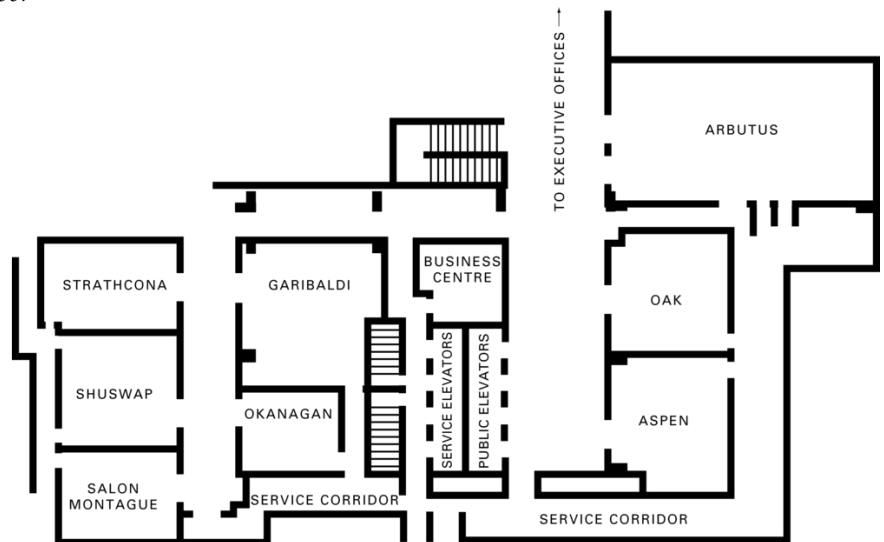
Assure your guests or delegates that Four Seasons works hard to reduce the carbon footprint of the events it hosts. Recent introductions include:

- A full recycling programme throughout the meeting rooms, guest rooms and restaurant
- An “Eco-Luxury” programme, allowing guests to choose how often their bed linens and towels are exchanged
- Food and beverage services that minimise packaging
- A “locavore” programme that promotes the use of seasonal and organic menus that are locally grown, thus reducing the carbon footprint of ingredients
- A special heating system that reduces energy consumption by 43%
- Installation of 3,000 CFL energy-saving light bulbs on all guest room floors

Lobby level



Third floor



TECHNICAL ASSISTANCE

Continually updating presentation equipment and keeping pace with changing technology, the Hotel offers state-of-the-art audiovisual equipment, including:

- Lecterns with light and sound control
- Overhead projectors, LCD colour display panel, slide projectors
- Multi-image dissolve units and programmers
- Built-in screens and drape kits
- Video cameras, video projectors, video players
- Microphones, mixers, amplifiers
- Audio cassette players, CD players, reel-to-reel players
- Stands, carts, easels, flipcharts, laser pointer, speaker timer
- Personal computers and peripherals
- On-site technician
- ISDN lines for video conferencing

- Wired or wireless Internet access in meeting rooms

#### MUSIC AND ENTERTAINMENT

Our Conference Service Managers will be happy to assist with setting up any type of music or entertainment for your meeting.

#### RECEIVING AND MAINTENANCE

The Hotel features a full-service shipping and receiving office. All packages should be sent to the attention of the Conference Service Manager. They will be stored in a separate conference storage area. Limited space is available for the storage of large items. Please time shipping to the date of your arrival and allow for additional time for customs clearance if your shipment is entering Canada from abroad.

##### *Receiving dock*

Please contact the receiving department or your Conference Service Manager for special arrangement for delivery of oversized packages or environmentally sensitive equipment.

##### *Post-conference shipping*

Shipping of post-conference materials may be coordinated through your Conference Service Manager.

##### *Maintenance*

The Engineering Department is available 24 hours a day for general assistance with lighting, room temperature control and minor repairs.

#### DESTINATION MANAGEMENT

Your Conference Services Manager can help accommodate your group's special requests. For detailed information, please contact the Hotel directly. In addition, we recommend the following destination management companies:

Cantrav Services Inc.  
Telephone: (604) 708-2500  
Fax: (604) 879-0950

Destination Planners, Inc.  
Telephone: (604) 687-0700  
Fax: (604) 687-1711

Pacific Destination Services  
Telephone: (604) 685-2205  
Fax: (604) 688-6972

Rare Indigo  
Telephone: (604) 732-6644  
Fax: (604) 732-6665

Max West Marketing Inc.  
Telephone: (604) 899-1070  
Fax: (604) 899-1071

#### SPOUSE PROGRAMMES

The following are examples of on-site and off-site spousal programmes. The Hotel would be pleased to assist in organising a programme to fit your needs and budget. Some ideas may include:

- City highlights tour
- Cooking class/demonstration
- Blo University
- Helicopter tours
- Golf

Other activities:

- On wheels - Rent bicycles or in-line skates and wheel around the green trails or sea wall of Stanley Park
- On water - Charter a sailboat and head out to English Bay. Or fish for salmon on beautiful Howe Sound. Watch for seals sunbathing on "The Rocks"
- Golf - Picturesque University Golf Club, 30 minutes from the Hotel, to Westwood Plateau Golf & Country Club, 45 minutes away
- Touring – The natural beauty of Grouse Mountain to atmospheric city neighbourhoods such as Gastown
- Shopping – 100 shops at Pacific Centre (right at the Hotel), Robson Street (fashionable boutiques and restaurants, a block away), Granville Island (our waterfront Farmers Market)
- Day trips – From the gardens of Victoria to the all-season mountain resort of Whistler
- Nighttime – Cocktail cruises to waterfront restaurants; creative theme parties on the Hotel's pool deck; dinner atop Grouse Mountain, at the Vancouver Aquarium, False Creek Yacht Club or Capilano Suspension Bridge – the venues are endless!
- Nightclubs – The Roxy, Commodore, The Plaza, Au Bar, Crush and Ginger 62, Caprice, Republic and Pop Opera – all within walking distance of the Hotel

#### CHILDRENS AND FAMILY PROGRAMMES

Vancouver offers many exciting places to visit and fun activities for the whole family to enjoy. Just a few:

- Stanley Park
- The Vancouver Aquarium
- Science World/OMNIMAX Theatre
- H.R. MacMillan Planetarium
- Museum of Anthropology, with its large Haida collection
- Baseball, football and hockey games
- Capilano Suspension Bridge and Park
- Local neighbourhoods such as Chinatown and Gastown
- Granville Island Market
- Shannon Falls, North America's 3rd-longest in the province
- Skiing, snow tubing or snowboarding at Whistler Mountain, Cypress Mountain or Mount Seymour
- Boating, windsurfing, canoeing, kayaking at Blackcomb
- Biking or in-line skating
- Zip trekking at Grouse Mountain

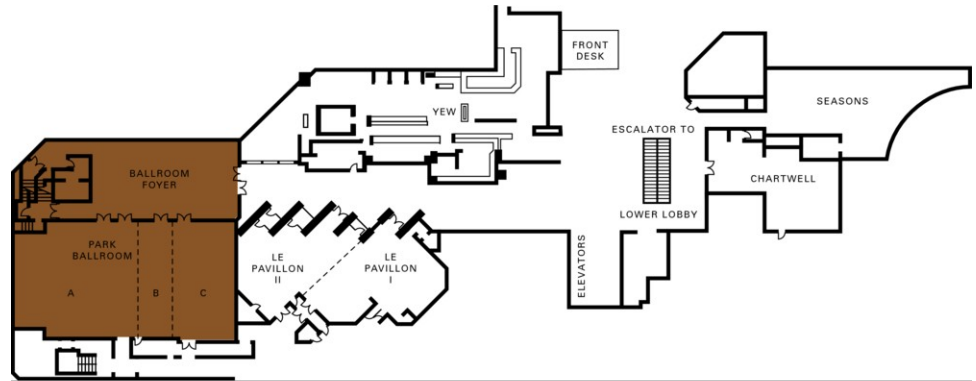
Our Concierge would be pleased to help arrange children's activities or babysitting services.

**PARK BALLROOM**

Dimensions 31.1 x 16.5 m  
102.1 x 54.1 ft  
Size 516 m<sup>2</sup>  
5,560 sq.ft.  
Height 5.1 m  
16.7 ft

*Capacities*

Classroom 300  
U Shape 60  
Theatre 700  
Reception 800  
Banquet Rounds 500

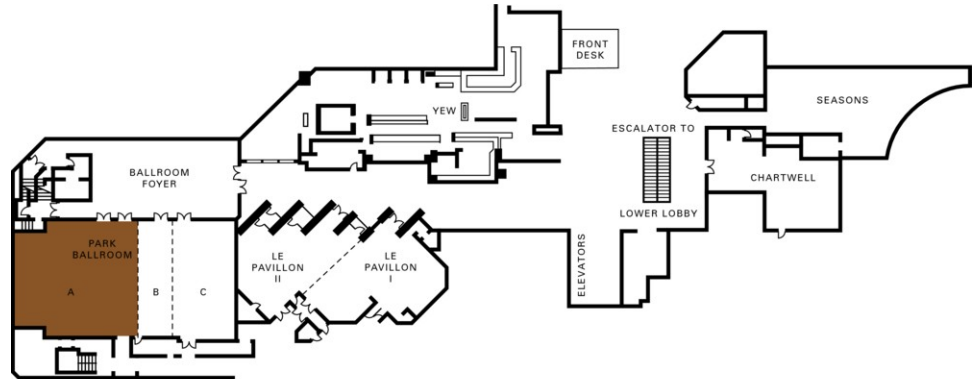


**PARK BALLROOM, SECTION A**

Dimensions 17.3 x 16.5 m  
56.9 x 54.1 ft  
Size 284.6 m<sup>2</sup>  
3,064 sq.ft.  
Height 5.1 m  
16.7 ft

*Capacities*

Classroom 150  
Hollow square 70  
U Shape 51  
Theatre 300  
Reception 400  
Banquet Rounds 220

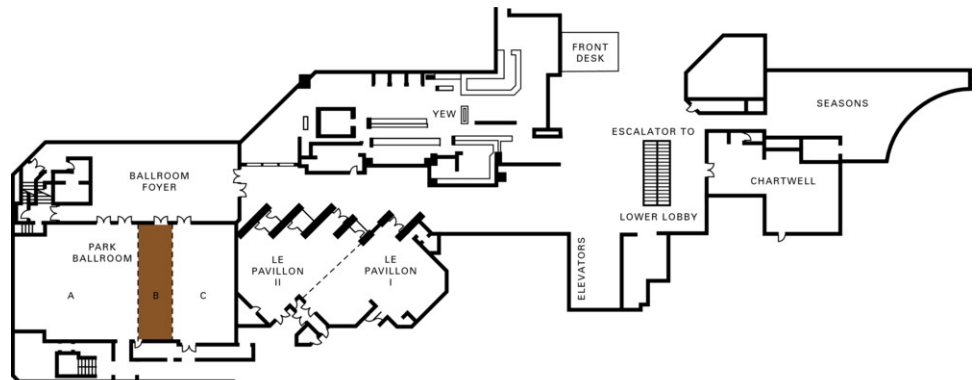


**PARK BALLROOM, SECTION B**

Dimensions 14 x 54 m  
150 x 581 ft  
Size 70 m<sup>2</sup>  
756 sq.ft.  
Height 5.1 m  
16.7 ft

*Capacities*

Classroom 300  
U Shape 60  
Theatre 700  
Reception 800  
Banquet Rounds 500

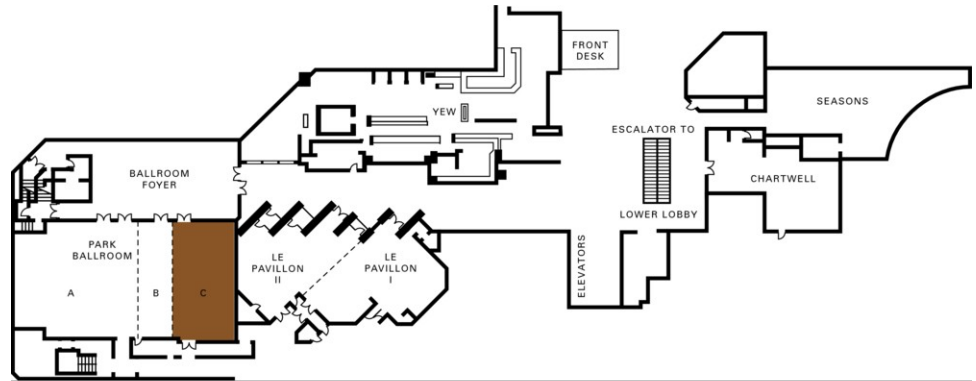


**PARK BALLROOM, SECTION C**

Dimensions	9.1 x 16.5 m 30 x 54.1 ft
Size	150.5 m <sup>2</sup> 1,620 sq.ft.
Height	5.1 m 16.7 ft

*Capacities*

Classroom	96
Hollow square	48
U Shape	36
Theatre	168
Reception	250
Banquet Rounds	150

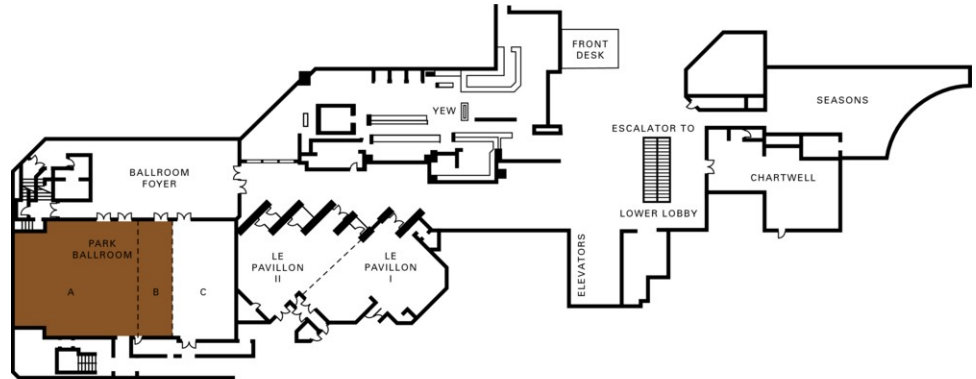


**PARK BALLROOM, SECTIONS A & B**

Dimensions	22.1 x 16.5 m 72.6 x 54.1 ft
Size	354.2 m <sup>2</sup> 3,920 sq.ft.
Height	5.1 m 16.7 ft

*Capacities*

Classroom	180
Hollow square	80
U Shape	60
Theatre	350
Reception	500
Banquet Rounds	270

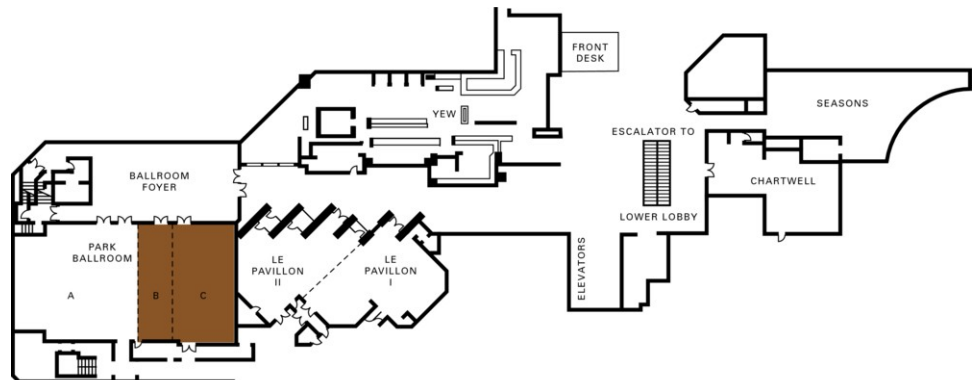


**PARK BALLROOM, SECTIONS B & C**

Dimensions	13.7 x 16.5 m 45 x 54.1 ft
Size	225.7 m <sup>2</sup> 2,430 sq.ft.
Height	5.1 m 16.7 ft

*Capacities*

Classroom	140
Hollow square	70
U Shape	51
Theatre	260
Reception	400
Banquet Rounds	190

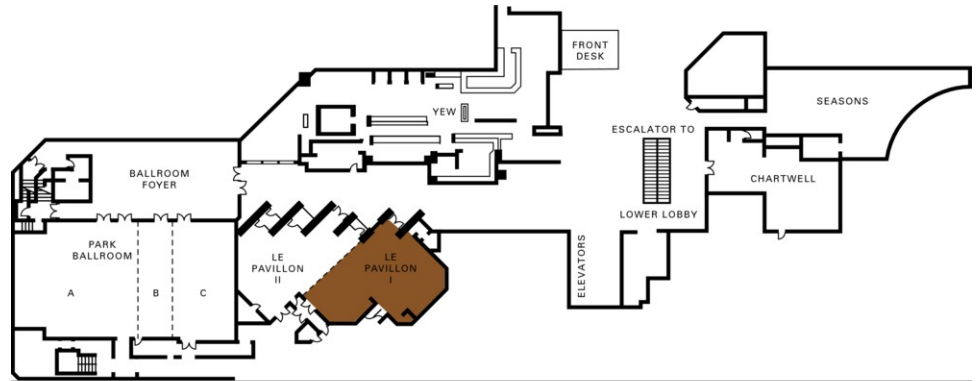


**LE PAVILLON I**

Dimensions	-
	-
Size	176.5 m <sup>2</sup> 1,900 sq.ft.
Height	2.9 m 9.5 ft

*Capacities*

Hollow square	28
U Shape	21
Theatre	100
Reception	150
Banquet Rounds	100

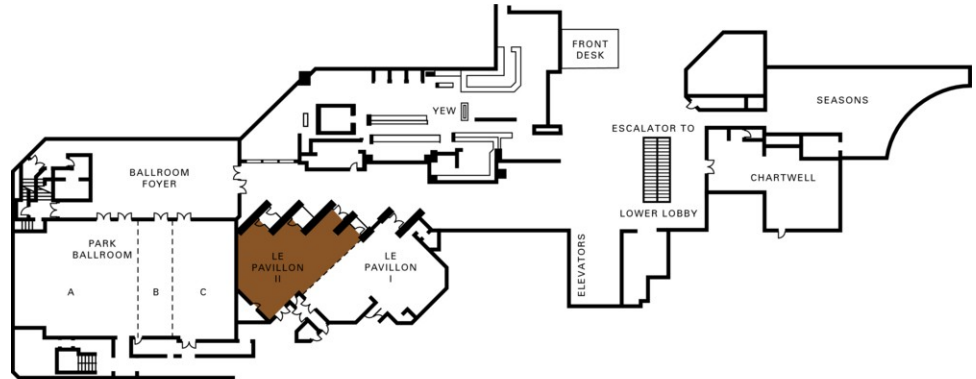


**LE PAVILLON II**

Dimensions	-
	-
Size	176.5 m <sup>2</sup> 1,900 sq.ft.
Height	2.9 m 9.5 ft

*Capacities*

Hollow square	30
U Shape	21
Theatre	100
Reception	150
Banquet Rounds	100
Boardroom	28

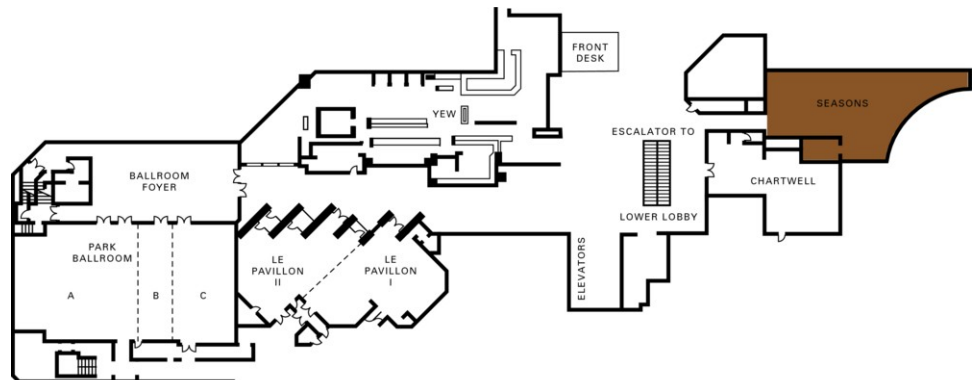


**SEASONS**

Dimensions	-
	-
Size	185.8 m <sup>2</sup> 2,000 sq.ft.
Height	-
	-

*Capacities*

Hollow square	50
U Shape	40
Theatre	120
Reception	175
Banquet Rounds	120
Boardroom	32

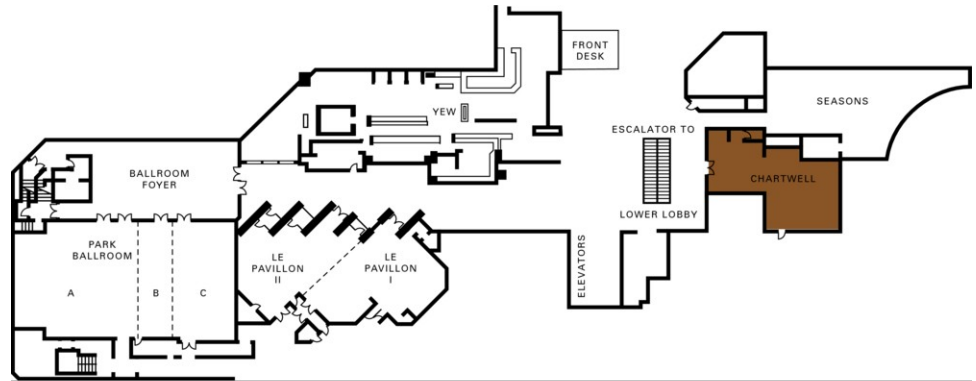


**CHARTWELL**

Dimensions	-
Size	187 m <sup>2</sup> 2,014 sq.ft.
Height	3 m 9.8 ft

*Capacities*

Reception	100
Banquet Rounds	65
Boardroom	20

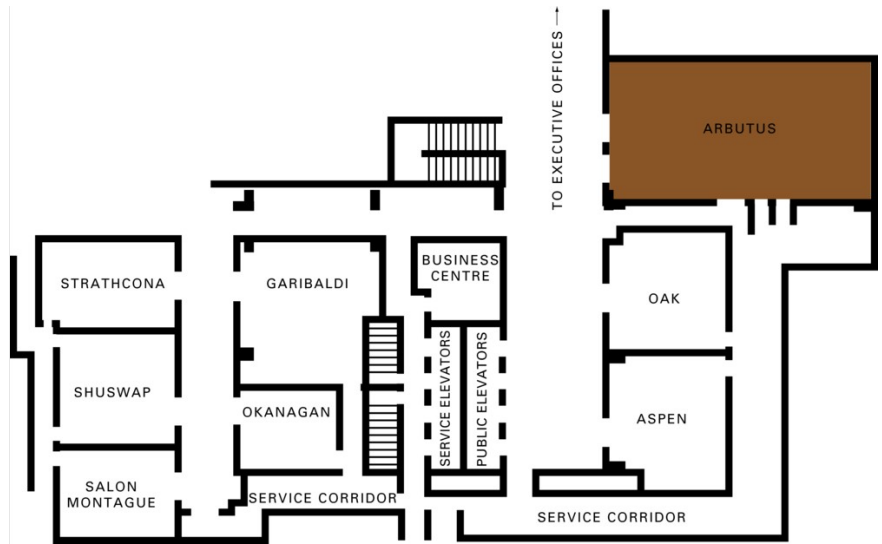


**ARBUTUS ROOM**

Dimensions	18.9 x 11.0 m 62 x 36 ft
Size	207.3 m <sup>2</sup> 2,232 sq.ft.
Height	2.9 m 9.5 ft

*Capacities*

Classroom	100
Hollow square	60
U Shape	45
Theatre	220
Reception	200
Banquet Rounds	150

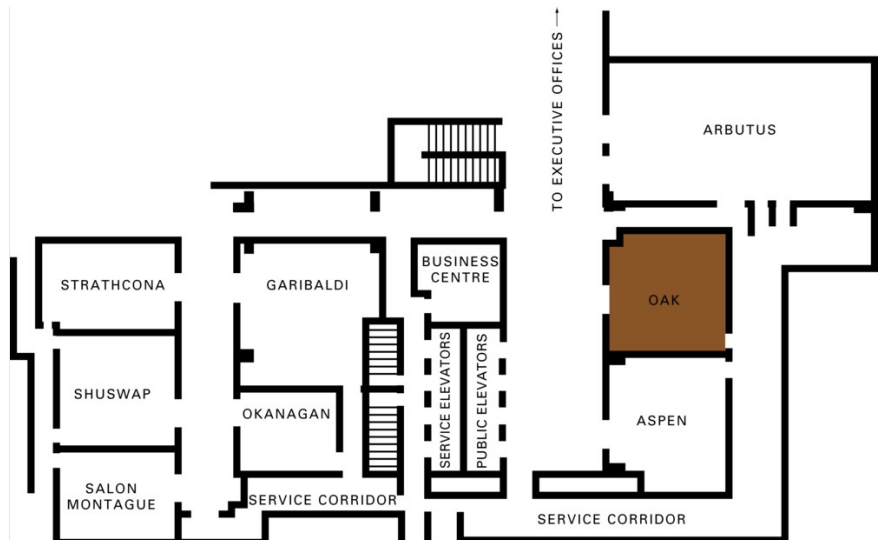


**OAK ROOM**

Dimensions	8.8 x 7.9 m 29 x 26 ft
Size	70 m <sup>2</sup> 756 sq.ft.
Height	2.9 m 9.5 ft

*Capacities*

Classroom	45
Hollow square	30
U Shape	24
Theatre	60
Reception	75
Banquet Rounds	50

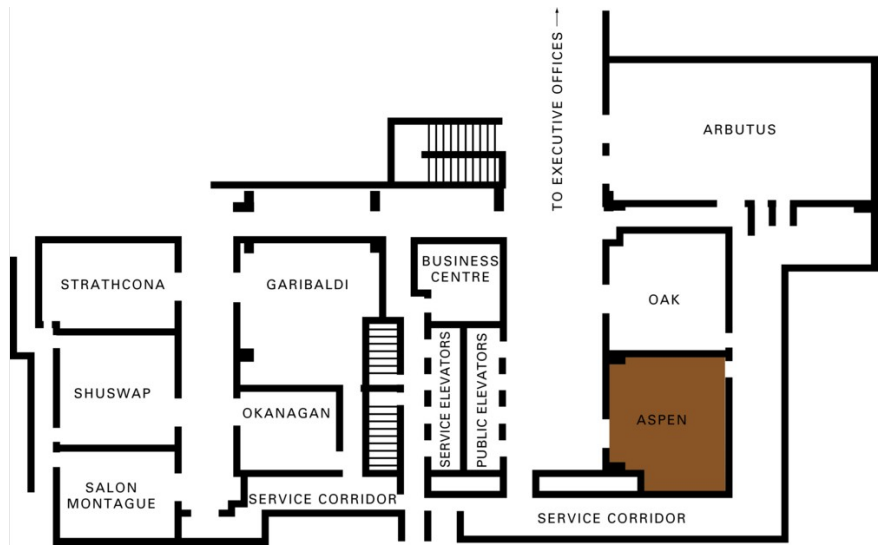


**ASPEN ROOM**

Dimensions	9.8 x 7.9 m
	32 x 26 ft
Size	77.3 m <sup>2</sup>
	832 sq.ft.
Height	2.9 m
	9.5 ft

*Capacities*

Classroom	45
Hollow square	32
U Shape	20
Theatre	70
Reception	75
Banquet Rounds	60

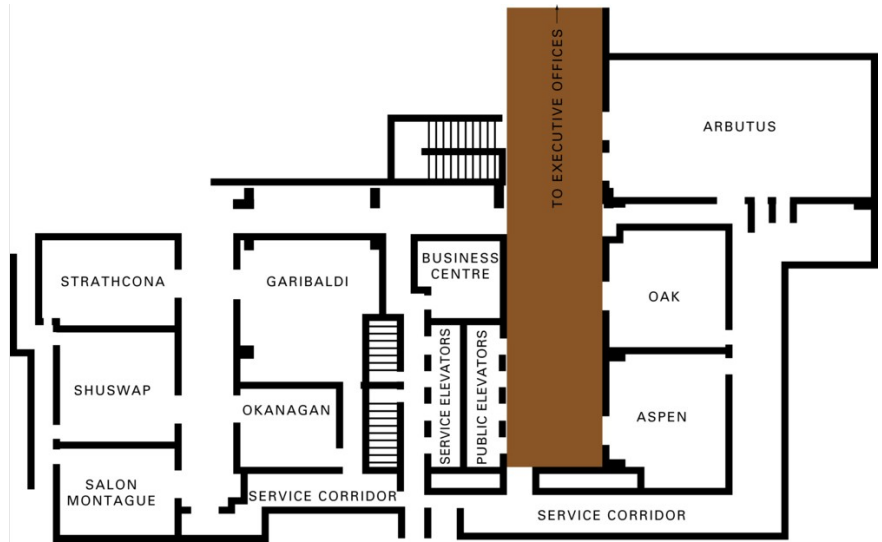


**THIRD FLOOR FOYER**

Dimensions	6.4 x 34 m
	23 x 113 ft
Size	241 m <sup>2</sup>
	2,599 sq.ft.
Height	2.9 m
	9.5 ft

*Capacities*

Reception	250
Banquet Rounds	120

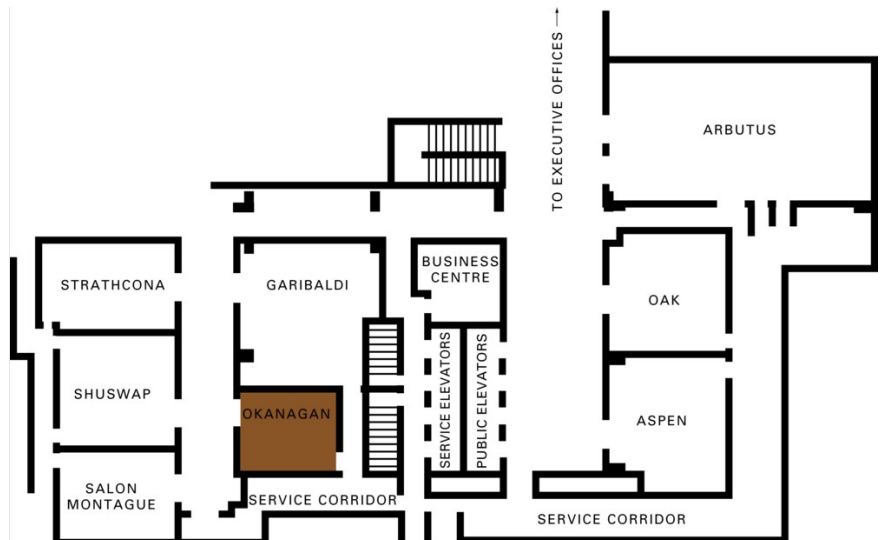


**OKANAGAN ROOM**

Dimensions	7.0 x 6.1 m
	23 x 20 ft
Size	42.7 m <sup>2</sup>
	460 sq.ft.
Height	2.9 m
	9.5 ft

*Capacities*

Classroom	24
Hollow square	20
U Shape	15
Theatre	36
Reception	35
Banquet Rounds	30

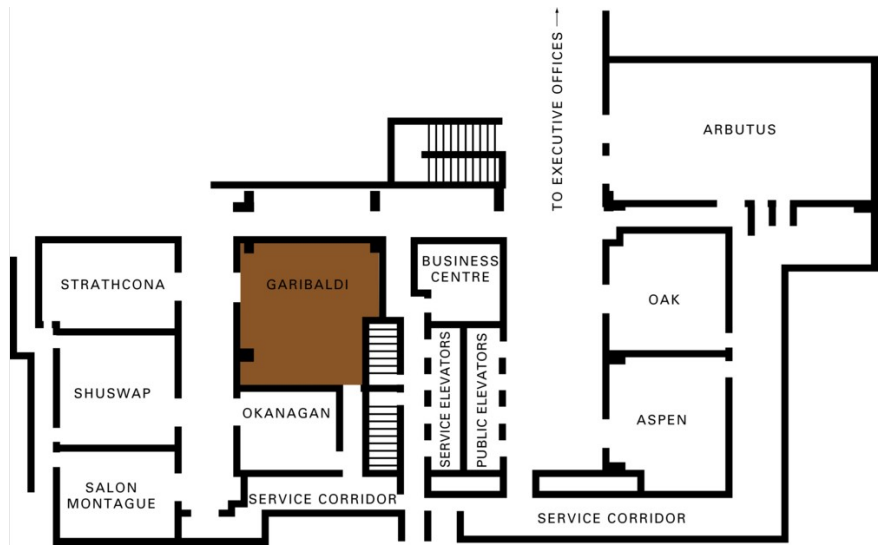


**GARIBALDI ROOM**

Dimensions	11.0 x 10.4 m 36 x 34 ft
Size	113.7 m <sup>2</sup> 1,224 sq.ft.
Height	2.9 m 9.5 ft

*Capacities*

Classroom	70
Hollow square	36
U Shape	28
Theatre	100
Reception	100
Banquet Rounds	70

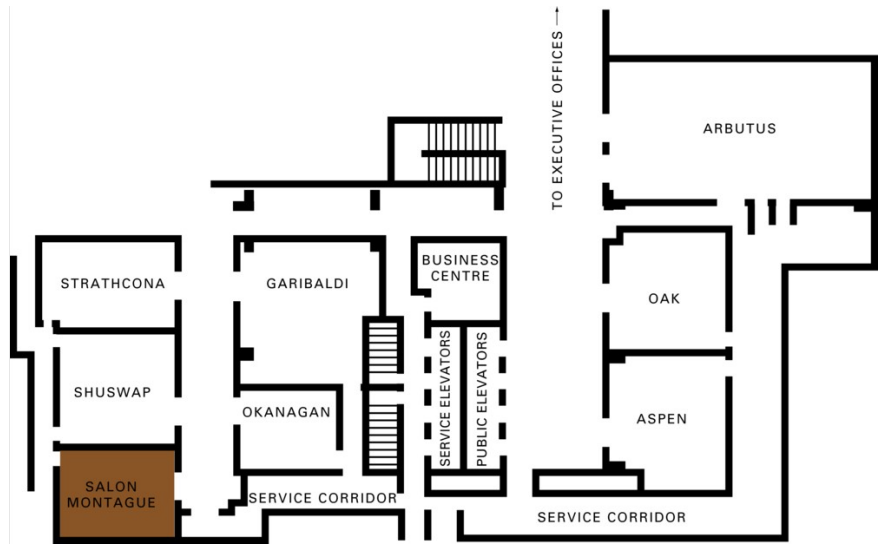


**SALON MONTAGUE**

Dimensions	8.2 x 6.1 m 27 x 20 ft
Size	52 m <sup>2</sup> 540 sq.ft.
Height	2.9 m 9.5 ft

*Capacities*

Boardroom	20
-----------	----

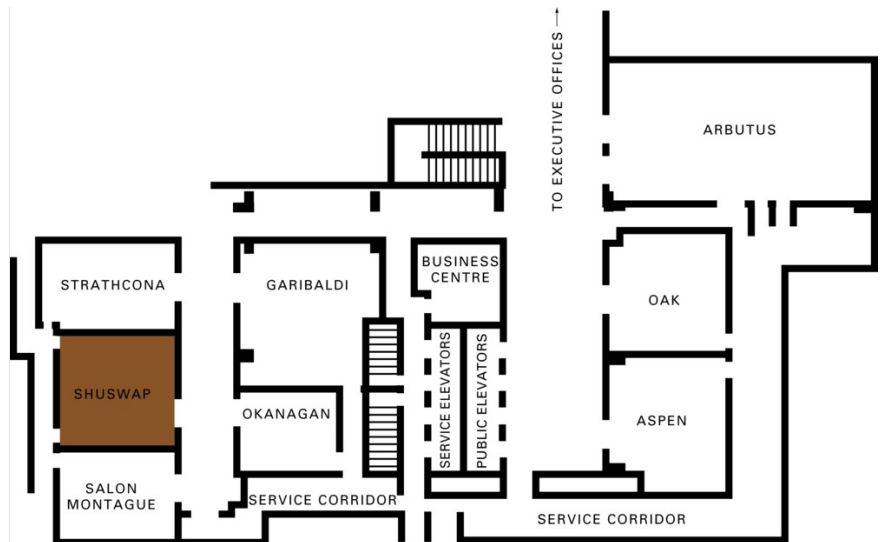


**SHUSWAP ROOM**

Dimensions	8.2 x 8.5 m 27 x 28 ft
Size	72.8 m <sup>2</sup> 756 sq.ft.
Height	2.9 m 9.5 ft

*Capacities*

Classroom	48
Hollow square	30
U Shape	24
Theatre	75
Reception	80
Banquet Rounds	50

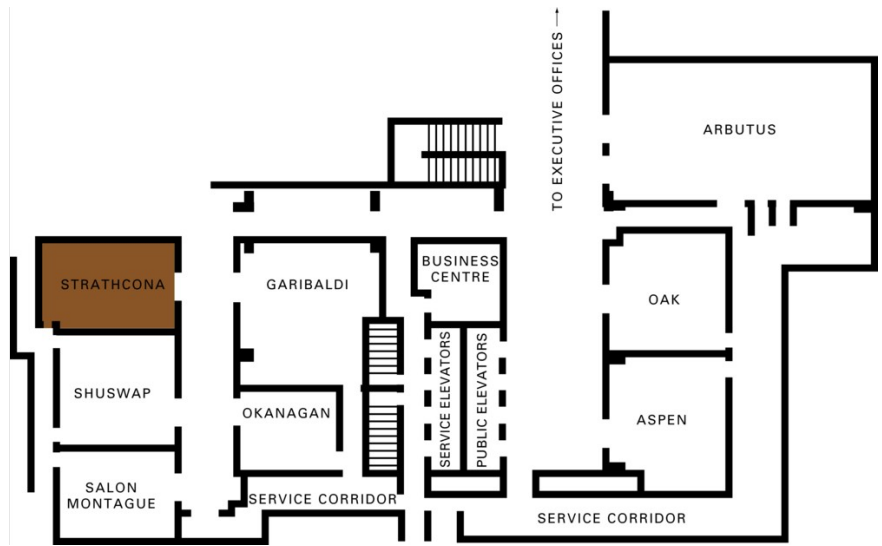


**STRATHCONA ROOM**

Dimensions	9.8 x 6.7 m
	32 x 22 ft
Size	67.4 m <sup>2</sup>
	704 sq.ft.
Height	2.9 m
	9.5 ft

*Capacities*

Classroom	45
Hollow square	28
U Shape	22
Theatre	60
Reception	60
Banquet Rounds	50
Boardroom	24



### GUEST ROOMS, SUITES AND PRIVATE RESIDENCES OVERVIEW

At Four Seasons Hotel Vancouver, large windows frame city views in 373 airy guest rooms, including 67 suites. The urban sophistication of the new décor is influenced by the natural beauty of British Columbia and the cosmopolitan Pacific Rim – with soothing palettes of tea green and amber, warm saffron and cream, or woodsy greens and aqua.

A custom-designed credenza with a rich cherry finish contains the private bar and dresser drawers. For our guests' comfort, new furnishings include a flat-screen television, classic Eames-style desk chair and a generously sized lounge chair and ottoman.

All guests enjoy access to high-speed wired and wireless Internet service. Marble bathrooms feature an ample vanity and a tub and shower combination.

Room Category	#	Beds	Size (m <sup>2</sup> )	Size (sq ft)	View
- Premier Preferred-View Room	14	1 King	51	550	City
- Premier City-View Room	30	1 King	51	550	City and mountain views
- Deluxe Preferred-View Room	64	1 King	36	388	City and mountain views
- Deluxe City-View Room	95	1 King or 2 double	36	388	City
- Superior City-View Room	71	1 King or 2 double	30	329	Vancouver landmarks and cityscapes
- Royal Suite	1	1 King	154	1,660	North Shore mountains and Vancouver Harbour views
- Prime Minister Suite	1	1 King	160	1,725	City views, Vancouver Art Gallery
- Two-Bedroom Suite	1	1 King and 2 double	116	1,250	South facing, city views
- One-Bedroom Suite	9	1 King	83	895	City
- Deluxe Executive Suite – Preferred View	15	1 King	63	678	City and mountain views
- Deluxe Executive Suite – City View	28	1 King	63	678	Hotel pool and downtown Vancouver
- Executive Suite – City View	12	1 King	50	534	South facing, Vancouver Art Gallery views

#### Guest Room Overview

All our beautifully refreshed guest rooms, including Moderate, Superior and Deluxe Rooms, feature large picture windows framing city scenes. The picturesque mountains backdrop the city in Deluxe-View Rooms. Premier Rooms and the higher Premier-View Rooms are 50% larger, and provide wraparound corner panoramas.

French doors seclude the bedroom from the sitting area in Four Seasons Executive Suites, which offer southern perspectives of the Vancouver Art Gallery. Deluxe Four Seasons Executive Suites are larger and overlook the Hotel's landscaped pool and garden area, while Premier Four Seasons Executive Suites offer lovely views from upper floors.

#### Suites Overview

Choose from some of the most spacious suites in the city, each one bright, airy and tastefully rendered. Areas for dining or meetings, plenty of comfortable seating and multiple televisions provide the necessities for family travel or informal entertaining.

Newly renovated One- and two-Bedroom Suites feature floor-to-ceiling windows with panoramic city views.

Newly renovated two-level specialty suites on the top floors, including the Royal Suite, overlook the North Shore mountains and Vancouver Harbour, and our largest quarters overlook the city, the Prime Minister Suite.

DELUXE EXECUTIVE SUITE –  
PREFERRED VIEW

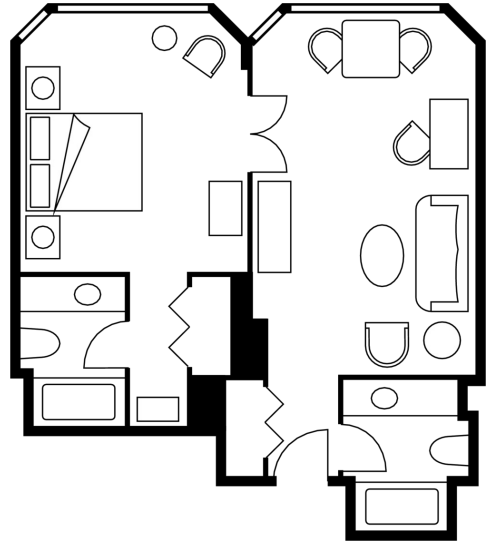
Number 15  
Beds King bed  
Size 63 m<sup>2</sup>  
678 sq ft

Location

21st to 28th floors

View

City and mountain views



DELUXE EXECUTIVE SUITE – CITY  
VIEW

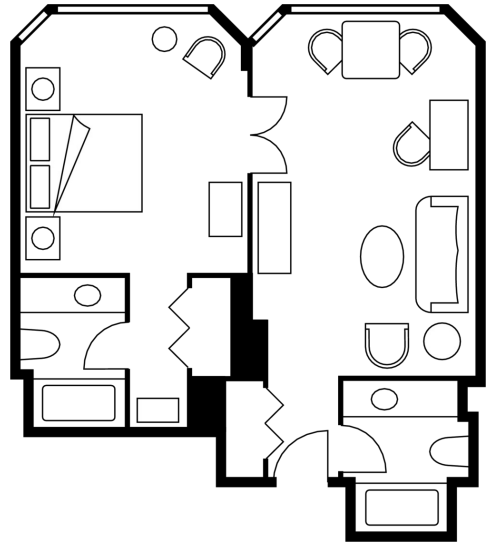
Number 28  
Beds King bed  
Size 63 m<sup>2</sup>  
678 sq ft

Location

6th to 20th floors

View

Hotel pool and downtown Vancouver



PREMIER PREFERRED-VIEW ROOM

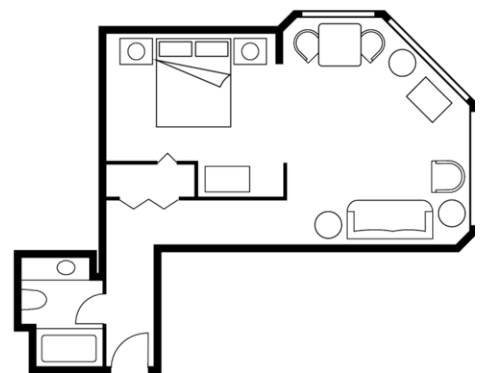
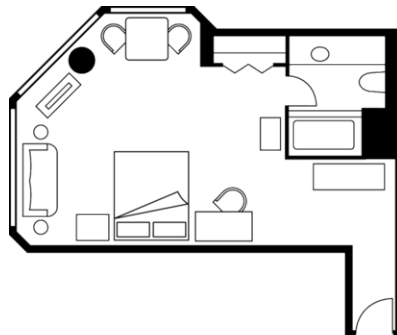
Number 14  
Beds King bed  
Size 51 m<sup>2</sup>  
550 sq ft

Location

21st to 28th floors

View

City



PREMIER CITY-VIEW ROOM

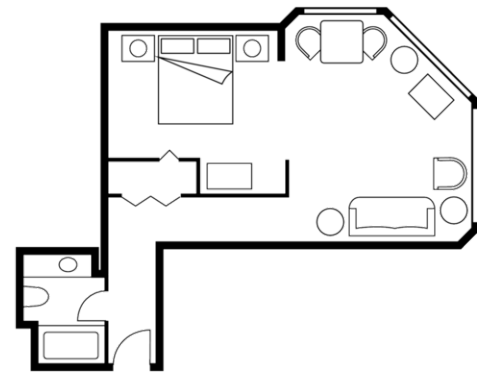
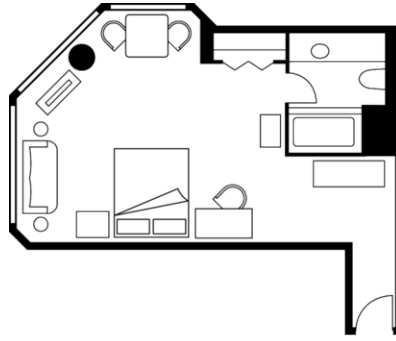
Number 30  
Beds King bed  
Size 51 m<sup>2</sup>  
550 sq ft

Location

5th to 20th floors

View

City and mountain views



SUPERIOR CITY-VIEW ROOM

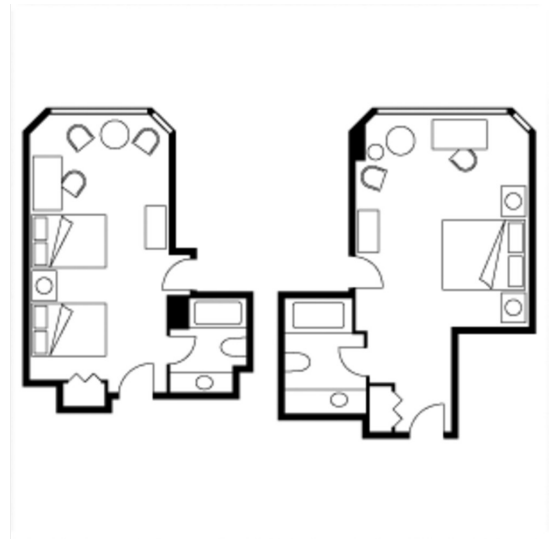
Number 71  
Beds King or two double beds  
Size 30 m<sup>2</sup>  
329 sq ft

Location

5th to 15th floors

View

Vancouver landmarks and cityscapes



#### AMENITIES

- Alarm clock
- All news cable network
- Complimentary newspaper with breakfast
- Down duvets
- Down pillows
- Fax machine on request
- Hair dryer
- Hypo-allergenic pillows on request
- In-room safe
- Interactive television
- iPod docking station
- Iron and ironing board
- Multi-line telephone(s) with voicemail
- Refrigerated private bar
- Thick terry bathrobes
- Twice-daily housekeeping service
- Wired or wireless Internet access

#### GUEST SERVICES

- 24-hour In-Room Dining
- 24-hour laundry/dry-cleaning/pressing
- 24-hour multilingual Concierge
- Complimentary overnight shoeshine
- Non-smoking rooms
- One-hour pressing
- Self-parking
- Services and amenities for younger guests
- Umbrellas
- Valet parking

#### VIP GIFTS AND WELCOME AMENITY

Special arrangements can be made for clients to purchase welcome amenities for their VIP guests.

---

DINING HOURS OF OPERATION

---

*YEW restaurant*

*Coffee to go*

Every day 7:00 am - 10:30 am

*Breakfast*

Every day 7:00 am - 11:30 am

*Lunch*

Monday to Friday 11:30 am - 2:30 pm

*Brunch*

Saturday and Sunday 11:30 am - 2:30 pm

*Dinner*

Every day 5:00 pm - 10:00 pm

---

*YEW bar*

Sunday to Wednesday 11:00 am - midnight

Thursday to Saturday 11:00 am - 1:00 am

---

*In-Room Dining*

*Breakfast*

Every day 5:00 am - 11:30 am

*All-day dining*

Every day 11:30 am - 6:00 am

*Hospitality menu*

Every day 11:30 am - 11:00 pm

---

DINING

Dine and unwind at YEW restaurant + bar, with its West Coast urban vibe that feels both cool and inviting – a rare combination. Its dynamic ambience, creative menu and highly experienced and attentive staff, have made YEW a city favourite every day of the year.

RESTAURANTS

*YEW restaurant*

At YEW restaurant, lofty 12-metre (40-foot) ceilings reach to the sky, while warmth and comfort emanate from rich wood panelling and a floor-to-ceiling sandstone fireplace.

Hewn from a slab of native maple from Vancouver Island, YEW's communal table for 14 is a convivial setting for magic from the restaurant's two open kitchens, which stimulate the palate with tastes from the entire Pacific region. A skylit private dining room for 10 is secluded by frosted glass.

- Indoor seating: 128, plus 76 at the bar

LOUNGES

*YEW bar*

In YEW bar, the menu of over 300 wines includes more than 150 by the glass – a temptation to sample the best of the best. YEW's mixologists continually renew the cocktail menu with fresh inventions.

## RECREATION FACILITIES

Swim from our state-of-the-art Club Four fitness facilities at one end of our pool to a private outdoor terrace and garden at the other. Allow our experienced staff to do all they can to make your visit to Vancouver exceptional.

### SPA SERVICES

Pamper yourself with a relaxing or rejuvenating spa treatment in the privacy of your guest room or suite. The Hotel offers a variety of treatments that can be arranged through our Concierge. During the warmer months, our spacious sunning terrace and garden is the perfect venue for a day of relaxation.

### FITNESS FACILITIES

Four Seasons Hotel Vancouver's Club Four fitness facility, one of the city's finest private health clubs, offers a spectacular oasis in the heart of Vancouver. Exclusive to Four Seasons guests, Club Four members and Innovative Fitness clientele, our modern facility is equipped with cardiovascular- and weight-training equipment and the only indoor-outdoor pool in Vancouver.

Our Innovative Fitness trainers specialise exclusively in personal training. All sessions are adapted to individual fitness levels and focus on the goals, needs and timelines of each guest. Corporate groups looking for an alternative to typical team-building activities and coffee breaks can also work with the Innovative Fitness team to inject a fitness boost, energising group activity or circuit-training workout into conferences, meetings or events, keeping creative juices flowing and spirits high.

After their workout, guests and Club Four members are encouraged to relax in our indoor-outdoor pool, whirlpool or sauna, or sit in the sun on our garden terrace.

- Size: 321 m<sup>2</sup> / 3,450 sq ft

### POOL

Discover our bright, airy oasis on the fourth floor, exclusively yours at Four Seasons. Our complimentary Health Club offers the city's only resort-style indoor-outdoor heated pool with men's and women's saunas and whirlpool.

### GOLF

#### *Northview Golf and Country Club*

Northview Golf and Country Club has two 18-hole public courses, Ridge and Canal, designed by golf legend Arnold Palmer. This target-oriented course offers great challenges and smooth-flowing, delicately contoured fairways.

#### *Furry Creek Golf and Country Club*

From sloped plateaus to rocky shorelines to the hauntingly beautiful Howe Sound, the layout of this course is truly "sea to sky." This is easily one of the most challenging and dramatic courses on the West Coast. Pacific Northwest cuisine is served in the Sea to Sky Grill Room, or more casual fare can be found in the Treetops Lounge.

#### *Westwood Plateau Golf & Country Club*

Westwood Plateau Golf and Country Club has earned a reputation for excellent service and spectacular scenery. Designer Michael Hurdzan has incorporated large Douglas firs, massive granite rock faces, rugged ravines and edge-of-the-world green sites into golf

holes that offer the ultimate in shot values – all in a spectacular mountain setting.

#### *University Golf Club*

University Golf Club is the most picturesque course in Vancouver. Located on the grounds of the University of British Columbia, this course's tree-lined fairways offer a traditional layout that is both challenging and rewarding for golfers of all levels. As one of the oldest courses in Vancouver, which can trace its roots back to 1929, University Golf Club has received many enhancements over the years. Four Seasons Hotels and Resorts hosts its annual golf tournament at this course because of its high calibre and its excellent clubhouse facilities.

#### TENNIS

##### *Stanley Park Tennis Centre*

With the ocean and mountains as your backdrop, enjoy playing tennis in Vancouver's crown jewel, Stanley Park. Six of the park's 17 tennis courts are available to be rented during the summer season (from late April to early September). Tennis courts may be reserved in advance by calling 1 (604) 605-8224.

##### *Queen Elizabeth Park*

Queen Elizabeth Park, home to some of the city's most beautiful gardens, features 18 complimentary tennis courts and a practice wall, which are available on a first-come, first-served basis. During the spring and summer months, tennis lessons may be reserved through the Riley Park Community Centre at 1 (604) 257-8545.

##### *Kitsilano Beach Park*

At this popular destination for locals, with scenic views spanning the open bay to the North Shore mountains to Stanley Park, you can play on one of 10 public courts, complete with a hitting wall for practice.

##### *Grant Connell Tennis Centre*

This indoor facility is an official Tennis Canada high-performance tennis development centre. It features six indoor tennis courts, an observation lounge and change rooms with showers. You may reserve a court by calling 1 (604) 822-2505.

##### *UBC Tennis Centre*

Featuring four indoor courts available year-round, the UBC Tennis Centre offers professional tennis instruction and services for people of all ages and skill levels. For additional information or to reserve a court, call 1 (604) 822-2505.

#### LOCAL ACTIVITIES

##### *Fishing and boating*

All types of boating adventures are available:

- Sailing
- Cruises
- Charters
- Canoeing
- Kayaking

---

## INCENTIVE ACTIVITIES

### *Sample itinerary*

Four Seasons is pleased to help you customise an itinerary for your group or party. Experience the vibrancy of British Columbia's commerce and culture in Vancouver and embrace its natural beauty in Whistler, one of North America's top mountain resorts, a mere two-hour drive away. To provide a taste of the experience, we have created these sample itineraries. We invite you to contact us to discuss your needs.

### *Vancouver*

---

Day 1	<p>Arrival at Hotel</p> <p>Upon arrival, relax and refresh.</p> <ul style="list-style-type: none"><li>• Unwind with welcome refreshments in the private hospitality room.</li><li>• Spend a leisurely afternoon by the pool.</li><li>• Re-energise in Club Four, the Hotel's fitness facility.</li><li>• Shop in Pacific Centre, Robson Street or high-end Alberni Street.</li></ul> <p>Evening</p> <p>Attend a welcome reception and one of these themed dinners.</p> <ul style="list-style-type: none"><li>• Cooking class and wine-tasting dinner where you are the chef</li><li>• Dine in private in your suite with spectacular views of the city.</li><li>• Dinner at YEW restaurant + bar, serving Vancouver's finest cuisine with exemplary service.</li></ul>
Day 2	<p>Day</p> <p>Breakfast at your leisure or in-room, before beginning the day's activities. Alternatively, cross Lions Gate Bridge to Capilano Suspension Bridge, where a picnic breakfast and Treetop Adventure await.</p> <ul style="list-style-type: none"><li>• Discover Stanley Park, the 405-hectare (1,000-acre) park on the edge of downtown, just 10 minutes from the Hotel.</li><li>• Cycle or in-line skate on Stanley Park's 10-kilometre (6-mile) seawall.</li><li>• Kayak at English Bay, or view the city and sunset from one of its downtown beaches.</li><li>• Explore Granville Island's public market, marinas, galleries and cafés.</li><li>• See Yaletown, where rambling brick buildings and loading docks have been transformed into storefronts, artists' studios, spas, cafés and restaurants.</li><li>• In South Granville, browse art galleries or take a walking tour of this historic neighbourhood.</li><li>• Visit historic Gastown</li></ul> <p>Evening</p> <ul style="list-style-type: none"><li>• Enjoy a private themed dinner at the Vancouver Art Gallery (across from the Hotel).</li><li>• Attend a private reception and dinner at the Museum of Anthropology to view one of the world's finest collections of Northwest Coast Native art.</li></ul>
Day 3	<p>Day</p> <p>Breakfast at your leisure or poolside at Club Four, before beginning the day's activities.</p>

- Visit Bowen Island for an aquatic adventure, kayaking or picnic lunch.
- Golf at Furry Creek, where sloped plateaus and rocky shoreline along beautiful Howe Sound provide the challenge.
- A two-hour drive on the scenic Sea to Sky Highway brings you to Whistler, one of North America's top seasonal destinations. The journey can also be made by helicopter or seaplane, from which you can view the majestic coastline.
- Travel by ferry, seaplane or helicopter to Victoria, where you can see British Columbia's Parliament Buildings and walk through 22 hectares (55 acres) of breathtaking floral display at Butchart Gardens.

Evening

- Sample Vancouver's diversified culinary choices.
  - Dinner boat cruise in scenic English Harbour
  - Dine atop Grouse Mountain against a backdrop of breathtaking views.
  - Enjoy an evening of entertainment at the Vancouver Symphony, theatre or nightclubs.
- 

Day 4            Morning  
Enjoy a leisurely breakfast in YEW restaurant + bar or through In-Room Dining before departing Vancouver.

---

*Vancouver/Whistler*

---

Day 4            Day  
For a complete experience of British Columbia, complement your stay in Vancouver with a visit to Whistler via float plane, coach or train, where breathtaking natural beauty is the canvas for myriad outdoor activities year round.

During the ride to Whistler, attractions along the Sea to Sky Highway are a prelude to the majestic coastal mountains, which have captured the imagination of many.

- After breakfast in Fifty Two 80 Bistro, embark on a 5-minute stroll to Squamish Lil'wat Cultural Center.
- Enjoy lunch at leisure.
- After lunch, guests may enjoy a walking tour, Zip Trek, ATV ride, bear tour, cooking class or refresh with a soothing spa treatment.

Evening

An evening off site presents several activities to explore; then savour a four-course dinner at the Roundhouse as you watch the sun set behind the mountains.

---

Day 5            Day  
Enjoy a Canadian-style buffet breakfast in Fifty Two 80 Bistro or breakfast in-room on your private terrace, before beginning the day's activities.

- Take a PEAK 2 PEAK gondola ride up Whistler Mountain and stroll

through alpine meadows.

- In jet boats, navigate Whistler's rivers up to the headwaters to view waterfalls and wildlife.
- For the more adventurous, experience whitewater rafting.
- Take a guided fishing trip to valley and alpine locations.
- Explore the valley's mountain bike trails.

Evening

- Complete your Whistler experience by dining 1,830 metres (6,000 feet) above sea level. Ride the gondola to the top of Whistler Mountain to view the spectacular scenery as you enjoy a glass of sparkling wine. Mingle over cocktails on the deck with a 360° view, then savour a four-course dinner at the Roundhouse as you watch the sun set behind the mountains.
  - Top off the evening with truffles and liqueurs as you journey down the mountain for your final night in Whistler.
-

Rooms	Dimensions		Size		Height		Classroom	Hollow square	U-shape	Theatre	Reception	Banquet rounds	Conference/boardroom
	(m)	(ft)	(m <sup>2</sup> )	(sq ft)	(m)	(ft)							
- Park Ballroom	31.1 x 16.5	102.1 x 54.1	516	5,560	5.1	16.7	300	-	60	700	800	500	-
- Park Ballroom, Section A	17.3 x 16.5	56.9 x 54.1	284.6	3,064	5.1	16.7	150	70	51	300	400	220	-
- Park Ballroom, Section B	14 x 54	150 x 581	70	756	5.1	16.7	-	-	-	-	-	-	-
- Park Ballroom, Section C	9.1 x 16.5	30 x 54.1	150.5	1,620	5.1	16.7	96	48	36	168	250	150	40
- Park Ballroom, Sections A & B	22.1 x 16.5	72.6 x 54.1	354.2	3,920	5.1	16.7	180	80	60	350	500	270	-
- Park Ballroom, Sections B & C	13.7 x 16.5	45 x 54.1	225.7	2,430	5.1	16.7	140	70	51	260	400	190	-
- Le Pavillon I	*N/A	*N/A	176.5	1,900	2.9	9.5	-	28	21	100	150	100	-
- Le Pavillon II	*N/A	*N/A	176.5	1,900	2.9	9.5	-	30	21	100	150	100	28
- Seasons	*N/A	*N/A	185.8	2,000	-	-	-	50	40	120	175	120	32
- Chartwell	-	-	187	2,014	3	9.8	-	-	-	-	100	65	20
- Arbutus Room	18.9 x 11.0	62 x 36	207.3	2,232	2.9	9.5	100	60	45	220	200	150	56
- Oak Room	8.8 x 7.9	29 x 26	70	756	2.9	9.5	45	30	24	60	75	50	24
- Aspen Room	9.8 x 7.9	32 x 26	77.3	832	2.9	9.5	45	32	20	70	75	60	26
- Third Floor Foyer	6.4 x 34	23 x 113	241	2,599	2.9	9.5	-	-	-	-	250	120	-
- Okanagan Room	7.0 x 6.1	23 x 20	42.7	460	2.9	9.5	24	20	15	36	35	30	24
- Garibaldi Room	11.0 x 10.4	36 x 34	113.7	1,224	2.9	9.5	70	36	28	100	100	70	28
- Salon Montague	8.2 x 6.1	27 x 20	52	540	2.9	9.5	-	-	-	-	-	-	20
- Shuswap Room	8.2 x 8.5	27 x 28	72.8	756	2.9	9.5	48	30	24	75	80	50	24
- Strathcona Room	9.8 x 6.7	32 x 22	67.4	704	2.9	9.5	45	28	22	60	60	50	24