

Quick Reference Guide

Last updated May 3, 2012 | For additional information please contact the hotel directly

Four Seasons Tokyo at Chinzan-so
10-8, Sekiguchi 2-chome, Bunkyo-ku, Tokyo, 112-8667, Japan
Tel 81.3.3943.2222 | Fax 81.3.3943.2300 | Res 81.3.3943.7070

www.fourseasons.com/tokyo



10-8, Sekiguchi 2-chome, Bunkyo-ku
Tokyo 112-8667, Japan
Tel 81.3.3943.2222
Fax 81.3.3943.2300
Res 81.3.3943.7070

Sales office:

Suite 720 Yurakucho Building,
1-10-1 Yurakucho
Chiyoda-ku, Tokyo 100-0006,
Japan
Tel 81.3.3211.4544
Fax 81.3.3211.4538

AIRPORTS

- Narita International Airport (NRT): 90 minutes by airport limousine bus (60 kilometres/37 miles)
- Haneda Airport (Tokyo International Airport) (HND): 60 minutes by airport limousine bus (30 kilometres/18.6 miles)

TABLE OF CONTENTS

- 2 *Introduction*
- 4 *Destination*
- 7 *Conference Facilities*
- 16 *Guest rooms, Suites and Private Residences*

Nestled amidst the tranquil beauty of a historic 7-hectare (17-acre) Japanese garden, yet close to Tokyo's main business and financial centres, Four Seasons offers a unique refuge from the bustle of this lightning-paced city.



Four Seasons Hotel Tokyo at Chinzan-so welcomes you to 259 guest rooms, including 44 suites – each among the largest of its kind in Tokyo and offering corner-room views of the magnificent gardens or Tokyo skyline. The Hotel is an innovative blend of classic European décor, distinctive Japanese art, modern technology and thoughtful service.

Dining options range from gourmet Italian and Japanese to casual bistro cuisine. Two European-style lounges invite you to unwind over tea or cocktails.

The 24-hour health club features TechnoGym training equipment and an indoor pool beneath a retractable solarium roof. Sophisticated YU, THE SPA is complete with VIP and couple's spa suites and Japanese onsen mineral baths. Four Seasons guests also enjoy golfing privileges at the private Camellia Hills Country Club.

With 2,973 square metres (31,992 square feet) of meeting and function space, including a high-tech amphitheatre, Four Seasons can host business or social occasions,

accommodating as many as 400 to 700 for banquets and receptions. From the elegant ballroom to the chapel and traditional Shinto shrine, all immersed in the all-season beauty of the gardens, Four Seasons Hotel Tokyo at Chinzan-so is also renowned as an exceptional – and exceptionally romantic – wedding setting.

TRANSPORTATION

Narita International Airport and Haneda Aiport (Tokyo International Airport) are the two international airports servicing Tokyo.

Hotel limousine service can be arranged through the Concierge; fee is applicable. Please contact the Concierge for rates. The Hotel also provides valet and self-parking; fee is applicable.

WEATHER CHART

Month	°C		°F	
	Highs/Lows	Highs/Lows	Highs/Lows	Highs/Lows
January	8	/ -2	46	/ 28
February	9	/ -1	48	/ 30
March	12	/ 2	54	/ 36
April	17	/ 8	63	/ 46
May	22	/ 12	72	/ 54
June	24	/ 17	75	/ 63
July	28	/ 21	82	/ 70
August	30	/ 22	86	/ 72
September	26	/ 19	79	/ 66
October	21	/ 12	70	/ 53
November	16	/ 6	61	/ 43
December	11	/ 1	52	/ 34

DESTINATION

Tokyo (originally known as Edo) has been the capital of Japan since 1600 AD. After 250 years of isolation from the rest of the world, Tokyo began to open its doors in the late 19th century. Tokyo's current cityscape is the result of the rebuilding that occurred after extensive bombing during World War II destroyed much of the city. While old and new coexist harmoniously, Tokyo has come to symbolise modern Japan, manifesting economic prosperity and worldly sophistication.

One of the most densely populated cities in the world, Tokyo is home to 13 million people, resulting in vast oceans of humanity on every corner. Organised in a uniquely Japanese fashion, the city's myriad rail systems and subways make travelling effortless and have created a series of town centres around the major rail stations. Despite its limited space for harmonious living, Tokyo is one of the cleanest and safest cities in the world.

Tokyo is located on the eastern coast of Japan at the head of Tokyo Bay on the Pacific Ocean. Mount Fuji is 40 kilometres (25 miles) west of the city, rising to a height of 3,776 metres (12,388 feet).

WEATHER

With four distinct seasons, Tokyo's cherry blossoms and pleasantly cool temperatures set the scene in spring. With the arrival of summer months, temperatures can rise to 30°C (86°F). Brilliant foliage paints a lovely picture in the crisp days of autumn. Winter is relatively mild and dry, and temperatures rarely fall far below freezing.

LOCAL ATTRACTIONS AND ACTIVITIES

At Four Seasons, you enjoy a unique vantage point from which to explore the sights, sounds and experiences around you. We hope the highlights of local attractions below help simplify your planning. Please let us know how else we can assist you.

Within a 15-minute drive of the Hotel

The Tokyo Dome:

- The Tokyo Dome is known locally as the "Big Egg." It's the venue for Japan's famous baseball games, as well as the place to be for all sports and big name music acts.

Within a 20-minute drive of the Hotel

Imperial Palace:

- This is one of the best kept secrets in Tokyo. It doesn't matter how busy the city is, you can always enjoy the calm tranquillity of the Imperial Gardens. From the Gardens, you will not be able to see the Imperial Palace: it is hidden behind walls and very heavily guarded. When the Emperor of Japan is not travelling, he lives in this house. Since this area is closed Mondays and most holidays, check with the Concierge before you set out.

Kabuki-za:

- Kabuki-za is the biggest kabuki (traditional Japanese play) theatre located in the Ginza. Featuring the "Earphone Guide", which provides English comments and explanations relating to the plot, music, actors and other features of Kabuki which otherwise may be difficult for non-Japanese visitors to understand.

Ueno Park:

- A major cultural centre for the city, Ueno Park includes the Tokyo National Museum, the Metropolitan Fine Art Gallery, the National Museum of Western Art and the National Science Museum.

Shinjuku:

- This is the home of the world's busiest train station: over two million people travel through Shinjuku's station everyday. The area is also famous for its shopping and skyscrapers, and many international corporations have their offices in Shinjuku.

Within a 30-minute drive of the Hotel

Akihabara:

- Akihabara is the best place to see the famous neon signs of Tokyo. Over 300 electronic stores in this area, carrying the latest in electronic inventions, light up the streets. Akihabara is a short train ride from the hotel, but make sure to bring your passports: many stores extend a 5% discount to visitors with passports.

Tokyo National Museum:

- The Tokyo National Museum displays a comprehensive collection of the works and antiquities from Japan and Asia. Multilingual maps are available to assist with the tour.

Edo Tokyo Museum:

- Edo Tokyo is the National Museum of History of Japan, dedicated to the country's cultural artifacts. Exhibits change throughout the year. Your Concierge can provide you with more details of the current exhibit. Although there are no English language tours, there is an information kiosk at the entrance where the staff speaks English.

The Ginza:

- The Ginza is probably the most famous area in the city. It is considered the Fifth Avenue of Tokyo, since all the exclusive shops and department stores are in this area. Many people also like to visit the Sony building where the company displays its latest products for customers to sample.

Omotesando:

- This area is considered the Champs Elysées of Tokyo. It has a wide, tree-lined street complete with very wide sidewalks. This is the place to go clothes shopping or to enjoy lunch in a French-style sidewalk café.

Harajuku:

- Just steps away from Omotesando is Harajuku and the Takeshita-dori Street. People love to visit this area, most famous for alternative apparel for teenagers. This is a great place to people watch and see the latest in fashion.

Roppongi:

- It is American in style, consisting mainly of burger joints, pizza parlors and night clubs. The night clubs open late and stay open all night long.

Within a 45-minute drive of the Hotel

Asakusa:

- Asakusa is the most famous tourist destination in Tokyo. A large Buddhist temple with a huge Japanese lantern stands at the front gate. This is also a very good area to do some souvenir shopping and sample the flavours of the local foods.

Kokugikan:

- Kokugikan is the national sumo stadium. Be a part of 1500 years of Sumo history. According to Japanese legend, the very origin of the Japanese people depended on the outcome of a Sumo match. The supremacy of the Japanese people on the islands of Japan was supposedly established when the god Take Mikazuchi defeated the leader of a rival tribe in a Sumo match. See traditional Japanese wrestling at its best.

The Tokyo Tower:

- This steel tower was modeled after the Eiffel Tower in Paris. Be sure to go on a clear day so that you can fully enjoy the unparalleled views of Tokyo.

Within a 1-hour drive of the Hotel

Yokohama:

- Yokohama is the very first city to be opened up to Western trade. Driving there, you will cross the famous suspension bridge, "Rainbow Bridge" – known for its beauty. Another method of travel, however, is by train and takes just over one hour.

Tokyo Disneyland:

- Disneyland! What more can anyone say? Children, no matter what language they speak, will love this place. Adults like it too! We recommend that you avoid going on the weekends or during a public holiday, as the lines can get very long.

Within a 1.5-hour drive of the Hotel

Kamakura:

- This city on the outskirts of Tokyo requires the better part of a day to properly explore. It was once the home of the feudal government in 1192 and is also home to the giant Buddha (Daibutsu). Kamakura, most famous for its heavy concentration of Buddhist temples and Shinto shrines, is a great walking area with a very rich history.

CONFERENCE FACILITIES OVERVIEW

Total Space	2,973 m ² 31,992 sq.ft.
Largest Ballroom	634 m ² 6,824 sq.ft.
Meet and Feed (max. capacity)	350
Breakouts	15
Banquet (max. capacity)	700
Outdoor Banquet (max. capacity)	-
Private Dining (max. capacity)	20

CONFERENCE FACILITIES

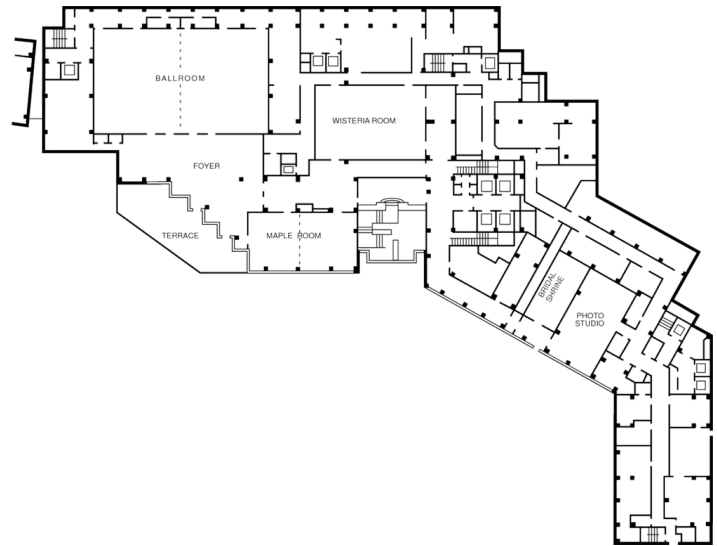
A refuge from Tokyo's hectic pace – and a meeting environment without equal – Four Seasons is nestled in historic, tranquil Chinzan-so Garden. Timeless comfort and the latest technologies in some of the city's largest guest rooms combine with most impressive function spaces and acclaimed cuisine.

A total of 2,973 square metres (31,992 square feet) of meeting and banquet space and access to the lovely gardens provide a multitude of unique options for groups from eight to 700. Fifteen versatile function rooms combine beauty and technological sophistication to make any business meeting, social event or private celebration a more-than-special occasion.

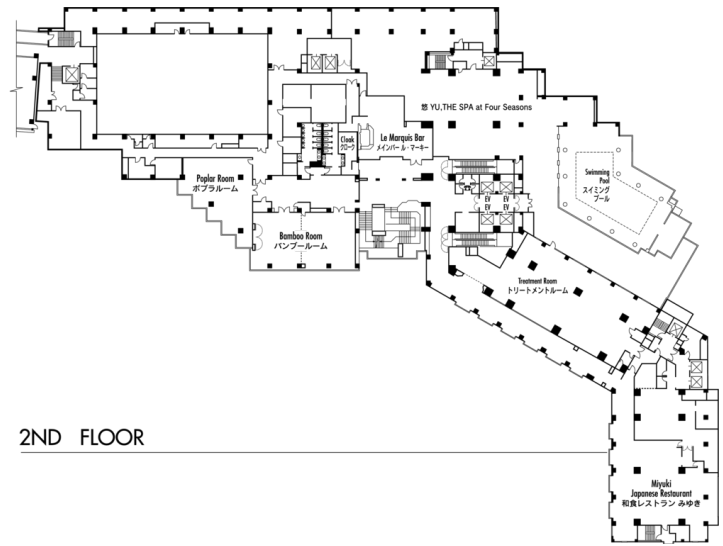
For weddings, the Hotel's Shinto shrine on the first floor is available for traditional Shinto ceremonies. For Christian ceremonies, the Hotel offers the convenience of its own on-site chapel.

Our gourmet banquet chefs specialise in innovative Western cuisine, as well as traditional Japanese and Beijing-style Chinese. Every moment is perfected to the finest detail with personalised Four Seasons service and support.

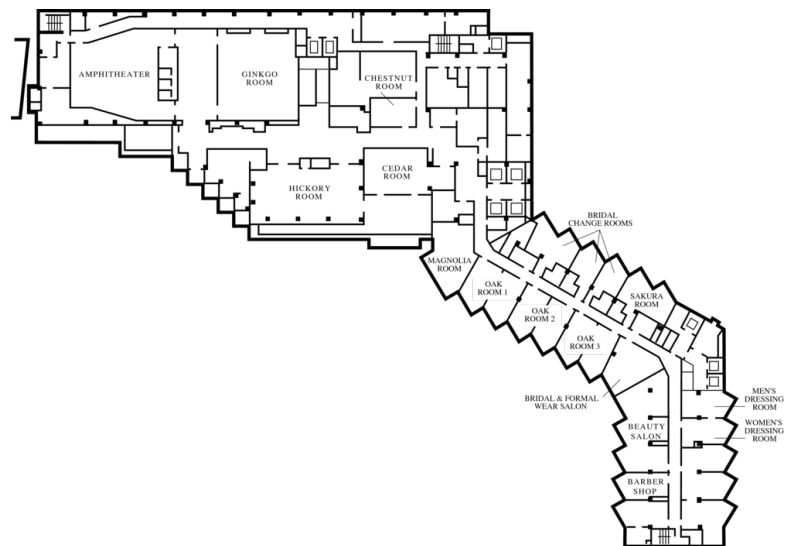
First floor



Second floor



Fourth floor



TECHNICAL ASSISTANCE

All meeting spaces at the Hotel are fully equipped to support the most technologically demanding presentations, with advanced lighting, audiovisual and staging capabilities. Telecommunications and electrical hook-ups are designed to meet or exceed industry standards.

State-of-the-art audiovisual equipment includes:

- Lecterns with light and sound control
- Overhead projectors, LCD colour display panel, slide projectors
- Multi-image dissolve units and programmers
- Built-in screens and drape kits
- Video cameras, video projectors, video players
- Microphones, mixers, amplifiers
- Audio cassette players, CD players, reel-to-reel players

- Stands, carts, easels, flipcharts, laser pointer, speaker timer
- Personal computers and peripherals
- On-site technician
- Wired or wireless Internet access in meeting rooms

MUSIC AND ENTERTAINMENT

Our Conference Service Managers will be happy to assist with setting up any type of music or entertainment for your meeting.

RECEIVING AND MAINTENANCE

The Hotel features a full-service shipping and receiving office. All packages should be sent to the attention of the Conference Service Manager or Sales Manager. They will be stored in a separate conference storage area. Limited space is available for the storage of large items. Please time shipping to the date of your arrival.

Receiving dock

Please contact the receiving department or your Conference Service Manager for special arrangement for delivery of oversized packages or environmentally sensitive equipment.

Post-conference shipping

Shipping of post-conference materials may be coordinated through your Conference Service Manager.

Maintenance

The Engineering Department is available 24 hours a day for general assistance with lighting, room temperature control and minor repairs.

DESTINATION MANAGEMENT

Our Conference Service Managers can help accommodate your group's special requests. For detailed information, please contact the Hotel directly. In addition, we recommend the following destination management companies:

JTB USA, Inc.
Manhattan Office
Telephone: 1 (212) 698-4929
Fax: 1 (212) 586-9686
Web site: <http://www.jtbusa.com>

Japan Event Services
12425 105th Place NE
Kirkland, WA 98034, U.S.A.
Telephone: 1 (425) 242-1540
Fax: 1 (425) 242-1530

Japan Event Services, Osaka Office
4-18 Higashino cho Korien
Hirakata-shi, Osaka 573-0085, Japan
Telephone: 81 (906) 376-5198
Fax: 81 (915) 242-1539

Ronnie Davis Productions
304 Hudson Street
New York, NY 10013, U.S.A.
Telephone: 1 (917) 925-5119 direct
Fax: 1 (212) 727-7103
US Mobile: 1 (917) 817-0958

Medetours Co. Ltd.
2-13-9-301 Mita
Minato-ku, Tokyo 107-0083, Japan

BUSINESS SERVICES

Around the clock, Four Seasons can assist you with business, entertainment or travel arrangements through the Business Center and resourceful, multilingual Concierge.

- 24-hour business services
- Audiovisual equipment
- Computers
- Express check-in/check-out
- Secretarial service
- Translation and interpretation service
- Wired or wireless Internet access in meeting rooms

SPOUSE PROGRAMMES

The Hotel offers a variety of activities of interest to spouses of meeting participants. The Concierge will provide detailed information on specially tailored spouse programmes, including the following:

- Ohanami picnic in the spring to see the cherry blossoms
- Shopping in the Ginza and visiting the Tasaki Pearl Gallery
- Tour to several workshops of Japanese traditional crafts: Daruma doll making, dowry chest making and Japanese doll making
- Visit to Japanese gardens and learning the art of Bonsai - cultivating miniature trees in pots of rocks
- A one-day trip to Kamakura, near Tokyo, one of the most historic cities in Japan

CHILDRENS AND FAMILY PROGRAMMES

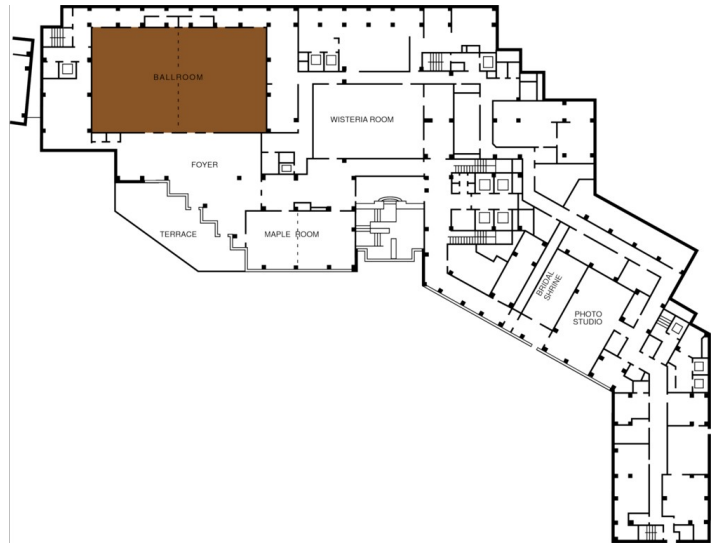
We would be pleased to help arrange appropriate activities for visiting families.

BALLROOM

Dimensions	18.7 x 32.5 m 61.4 x 106.6 ft
Size	634 m ² 6824 sq.ft.
Height	6 m 19.6 ft

Capacities

Classroom	350
Hollow square	120
U Shape	100
Theatre	600
Reception	500
Banquet Rounds	300

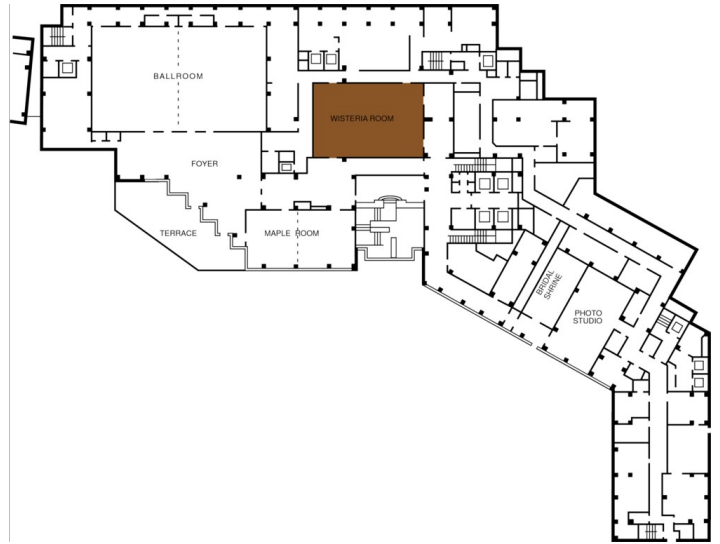


WISTERIA ROOM

Dimensions	13.9 x 20.4 m 45.6 x 67 ft
Size	283 m ² 3045 sq.ft.
Height	3.0 m 9.8 ft

Capacities

Classroom	150
Hollow square	70
U Shape	55
Theatre	250
Reception	180
Banquet Rounds	120

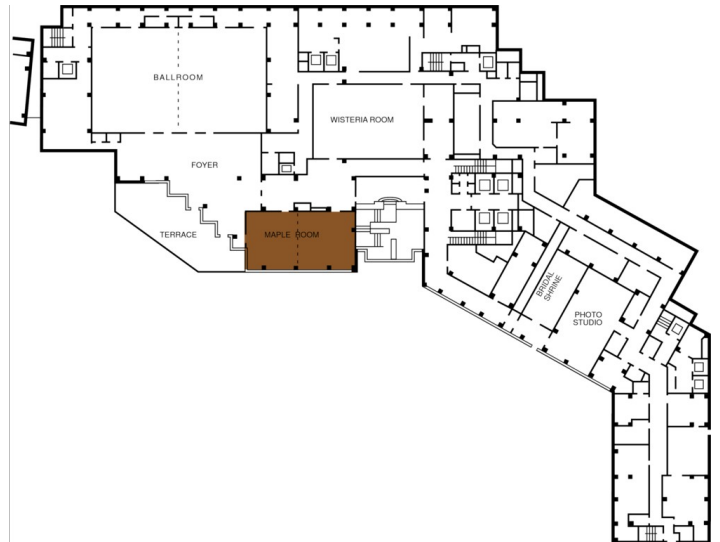


MAPLE ROOM

Dimensions	11.1 x 20.4 m 36.4 x 67 ft
Size	228 m ² 2454 sq.ft.
Height	3 m 9.8 ft

Capacities

Classroom	90
Hollow square	60
U Shape	50
Theatre	180
Reception	120
Banquet Rounds	90

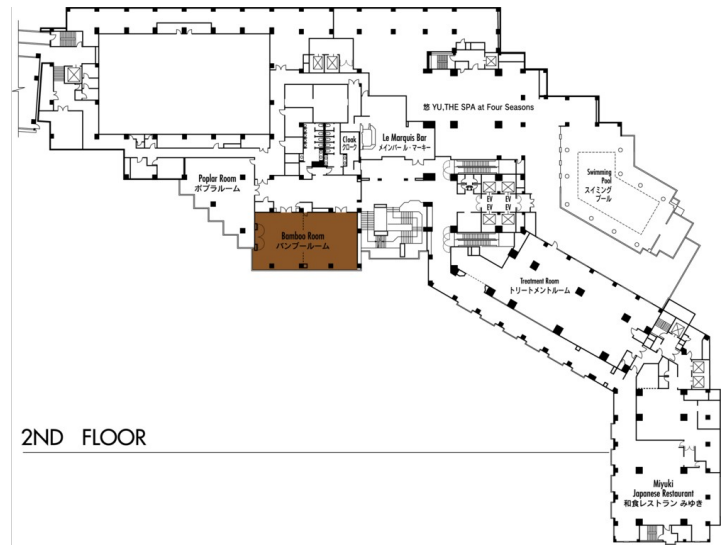


BAMBOO ROOM

Dimensions	11.1 x 20.4 m 36.4 x 67 ft
Size	220 m ² 2368 sq.ft.
Height	3 m 9.8 ft

Capacities

Classroom	90
Hollow square	60
U Shape	50
Theatre	180
Reception	120
Banquet Rounds	90

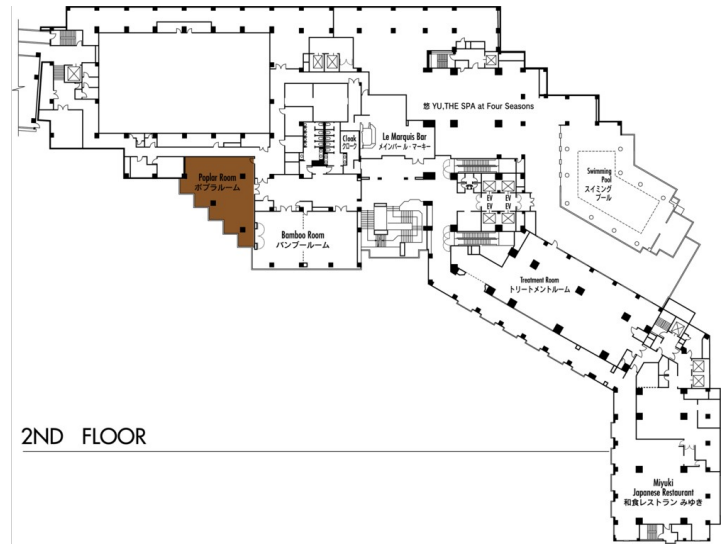


POPLAR ROOM

Dimensions	-
Size	170 m ² 1,829 sq.ft.
Height	3 m 9.8 ft

Capacities

Classroom	42
Hollow square	24
U Shape	20
Theatre	70
Reception	60
Banquet Rounds	50

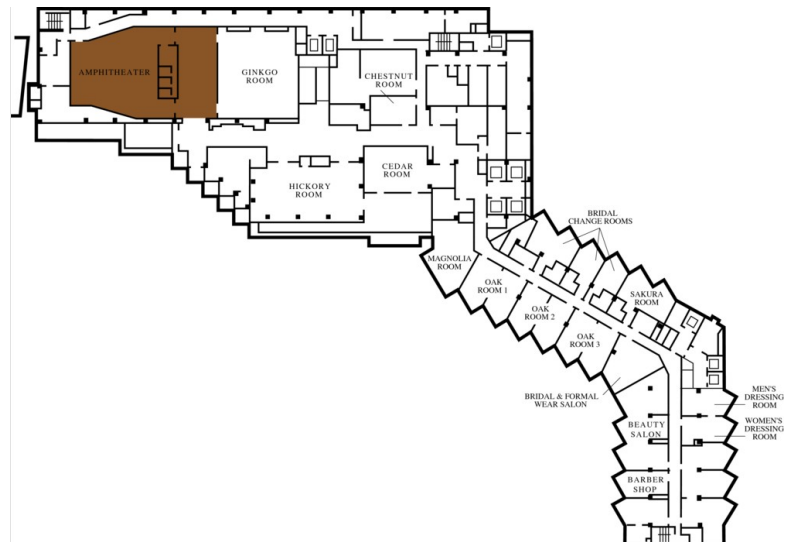


AMPHITHEATRE

Dimensions	12.5 x 18 m 41 x 59 ft
Size	225 m ² 2,421 sq.ft.
Height	-

Capacities

Classroom	98
-----------	----

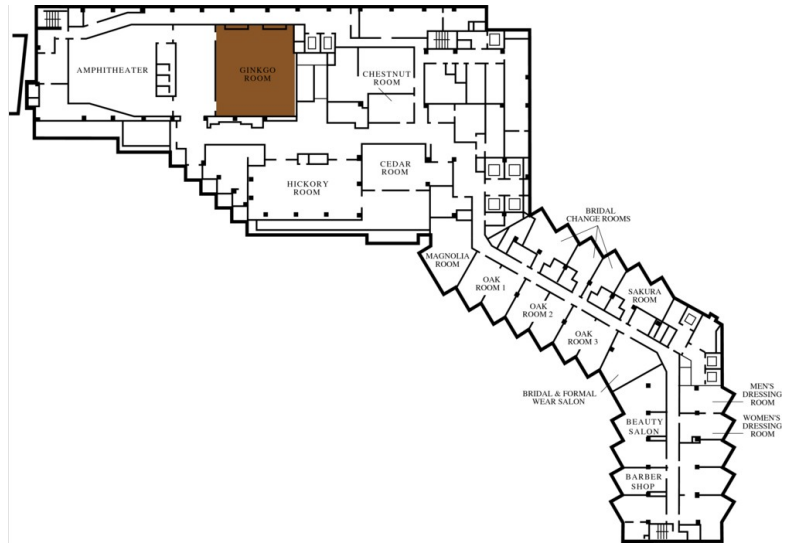


GINKGO ROOM

Dimensions	16.5 x 15.2 m
	54.1 x 50 ft
Size	251 m ²
	2,702 sq.ft.
Height	3 m
	9.8 ft

Capacities

Classroom	100
Hollow square	65
U Shape	50
Theatre	180
Reception	150
Banquet Rounds	100

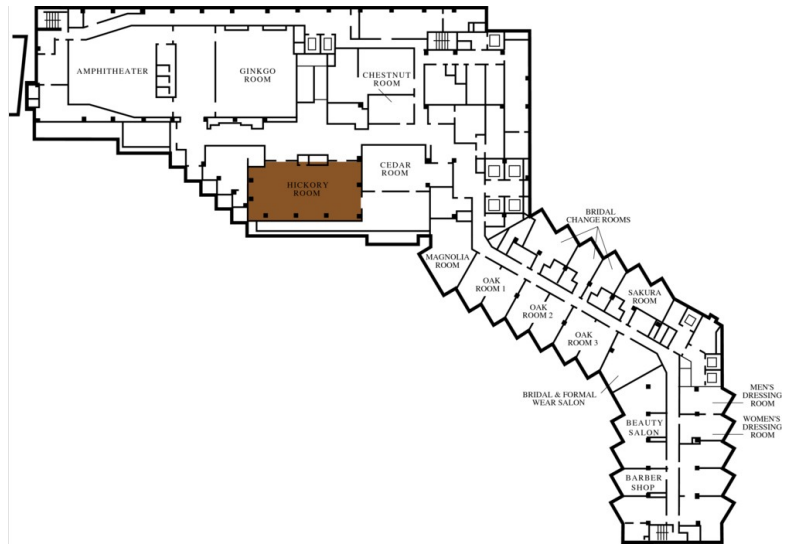


HICKORY ROOM

Dimensions	11.1 x 20.4 m
	36.4 x 67 ft
Size	214 m ²
	2303 sq.ft.
Height	3 m
	9.8 ft

Capacities

Classroom	90
Hollow square	60
U Shape	50
Theatre	180
Reception	120
Banquet Rounds	90

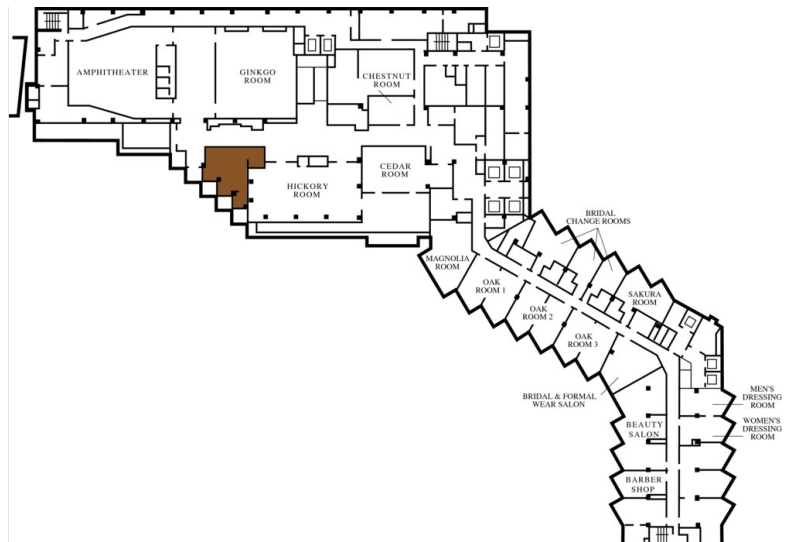


PINE ROOM

Dimensions	7 x 11 m
	22 x 36 ft
Size	76 m ²
	818 sq.ft.
Height	3 m
	9.8 ft

Capacities

Classroom	16
Hollow square	18
U Shape	16
Theatre	24
Reception	30
Banquet Rounds	24

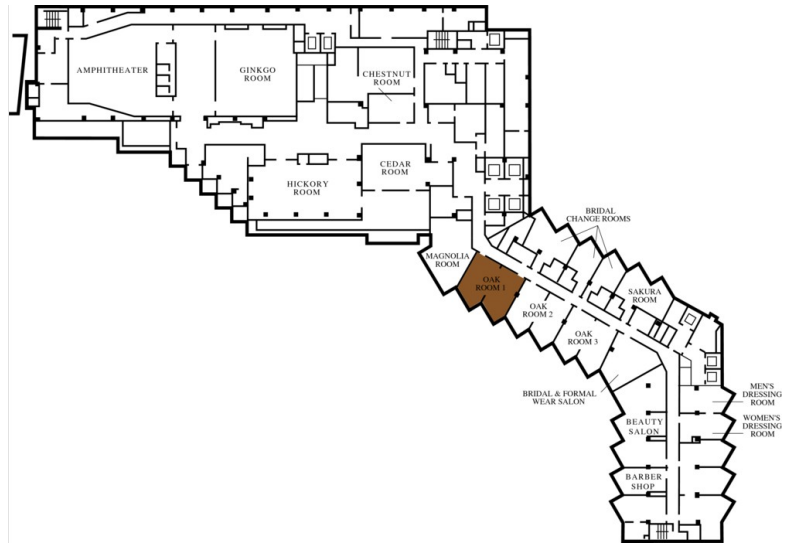


OAK ROOM 1

Dimensions	8 x 11 m 26 x 36 ft
Size	88 m ² 947 sq.ft.
Height	3 m 9.8 ft

Capacities

Reception	30
Banquet Rounds	10
Boardroom	10

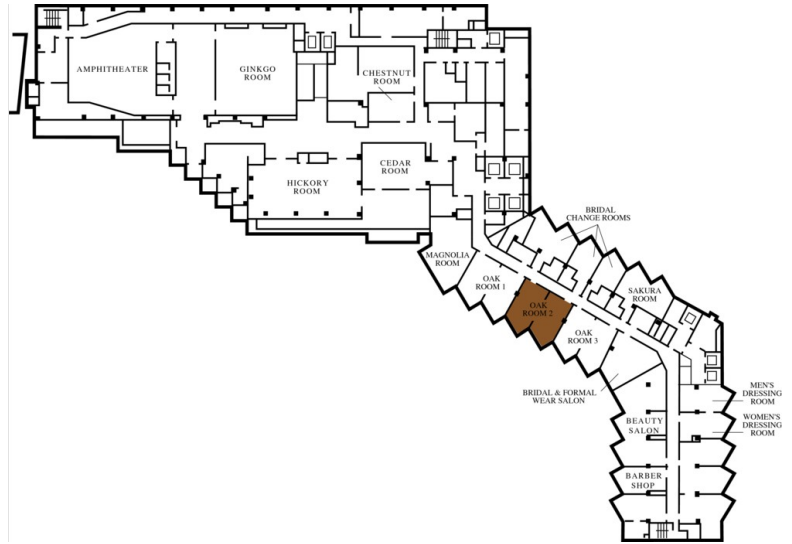


OAK ROOM 2

Dimensions	8 x 11 m 26 x 36 ft
Size	88 m ² 947 sq.ft.
Height	3 m 9.8 ft

Capacities

Reception	30
Banquet Rounds	10
Boardroom	10

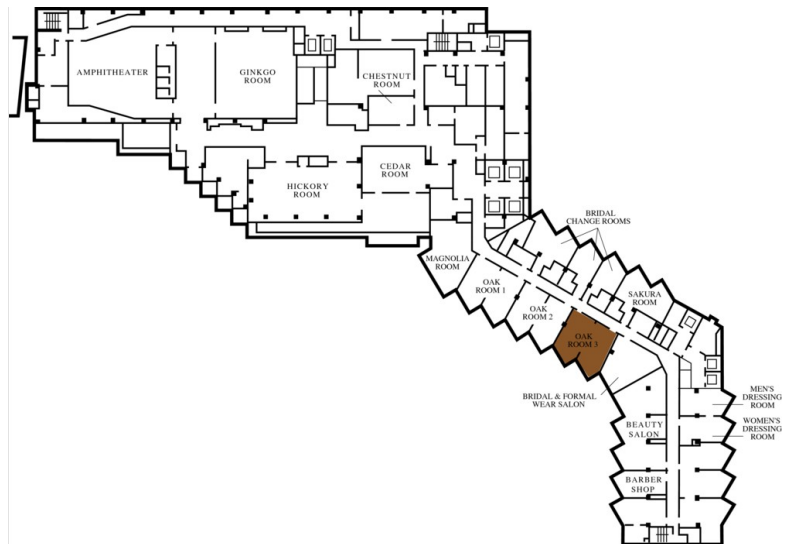


OAK ROOM 3

Dimensions	8 x 11 m 26 x 36 ft
Size	88 m ² 947 sq.ft.
Height	3 m 9.8 ft

Capacities

Reception	30
Banquet Rounds	10
Boardroom	10

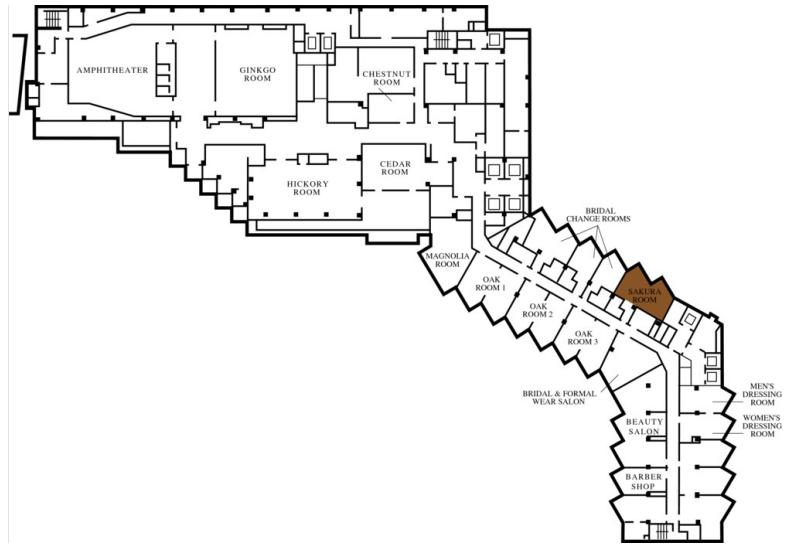


SAKURA ROOM

Dimensions 10 x 7 m
33 x 23 ft
Size 70 m²
753 sq.ft.
Height 3 m
9.8 ft

Capacities

Banquet Rounds 16
Boardroom 16

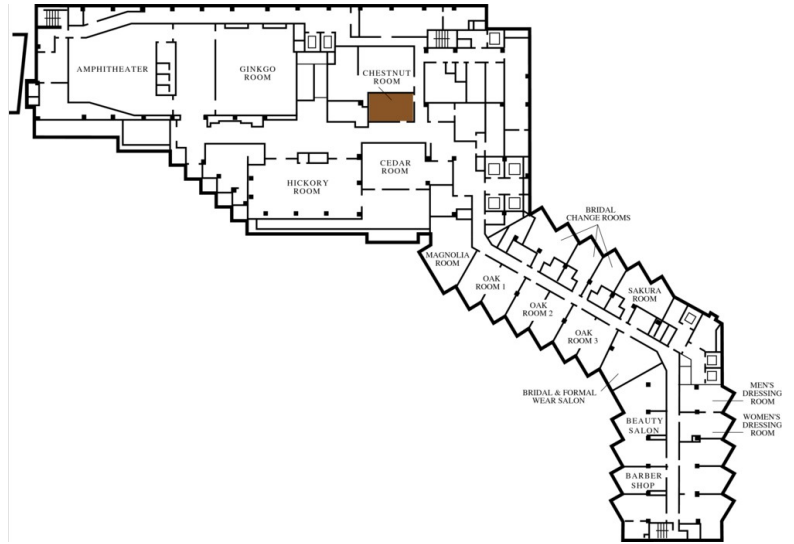


CHESTNUT ROOM

Dimensions 5 x 8.3 m
16.4 x 27.2 ft
Size 43 m²
463 sq.ft.
Height 3 m
9.8 ft

Capacities

Banquet Rounds 10
Boardroom 10

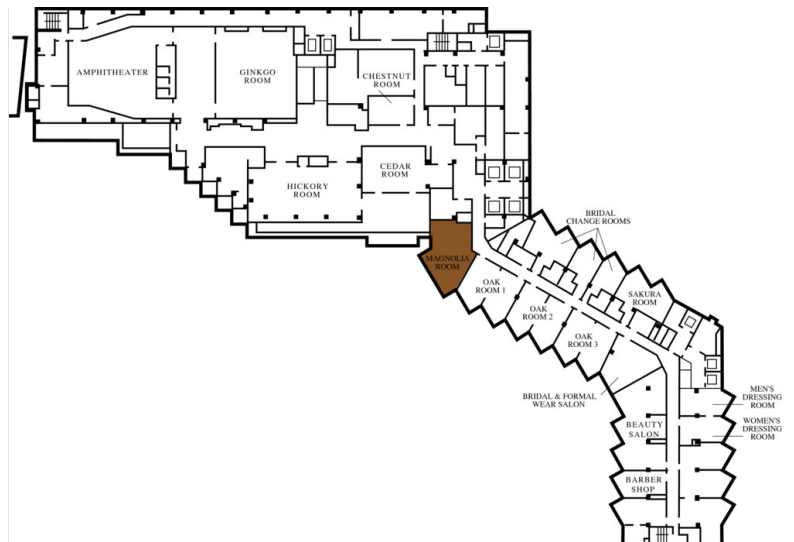


MAGNOLIA ROOM

Dimensions 8.3 x 8.3 + 4.8 x 4.8 m
27 x 27 + 15 x 15 ft
Size 92 m²
990 sq.ft.
Height 3 m
9.8 ft

Capacities

Reception 30
Banquet Rounds 10
Boardroom 10



GUEST ROOMS, SUITES AND PRIVATE RESIDENCES OVERVIEW

The Hotel's unique design ensures that all guest rooms have corner windows with enticing views of the gardens or the Tokyo skyline. The 259 guest rooms, including 44 suites, are among the most spacious in the city.

In-room technology includes two voice lines and an independent data line, voice mail in English and Japanese, a 32-inch (81-centimetre) LCD screen television, DVD player (Region 2), a compact hi-fi component system (CD, MD and tuner) and VCP. A fax machine is available on request.

The marble bathroom includes both a deep-soaking tub and a glass-enclosed shower, a separate WC, a mini television and an electronic toilet/bidet.

<i>Room Category</i>	<i>#</i>	<i>Beds</i>	<i>Size</i> <i>(m²)</i>	<i>View</i> <i>(sq ft)</i>	<i>View</i>
- Conservatory Room	4	1 King or 2 twin	64	688	Bay window with a private atrium
- Four Seasons Executive Garden Suite	8	1 King or 2 twin	60	645	Japanese gardens
- Four Seasons Executive Suite	17	1 King or 2 twin	60	645	Tokyo skyline
- Deluxe Garden-View Room	13	1 King or 2 twin	60	645	Japanese gardens
- Deluxe Room	8	1 King or 2 twin	55	591	Tokyo skyline
- Superior Garden-View Room	91	1 King or 2 twin	45	484	Japanese Gardens
- Superior Room	99	1 King or 2 twin	45	484	Tokyo skyline
- Imperial Suite	1	2 King and 2 twin	280	3,013	Japanese gardens
- Royal Suite	1	1 King and 2 twin	193	2,075	Japanese gardens
- Presidential Suite	1	1 King and 2 twin	193	2,075	Japanese gardens
- Ambassador Suite	1	2 King	138	1,485	Japanese gardens
- Premier Garden Suite	7	1 King or 2 twin	93	1,000	Japanese gardens
- Conservatory Suite	1	2 twin	105	1,130	Japanese gardens
- Japanese Suite	1	1 Single futon	83	893	Japanese gardens
- Deluxe Garden Suite	6	1 King or 2 twin	83	893	Japanese gardens

Guest Room Overview

Superior Rooms are among the most spacious of their kind in Japan, and Deluxe Rooms are significantly larger. Both feature views of the Tokyo skyline. Garden-View Superior and Deluxe Rooms combine the same sense of space with views of Chinzan-so Gardens.

In Four Seasons Executive Suites and garden-view Four Seasons Executive Garden Suites, doors to separate the sleeping and living areas add privacy for business or family travel. Conservatory Suites overlook the Japanese garden from picture windows in a raised conservatory atrium decorated with comfortable furniture and lush tropical plants.

Suites Overview

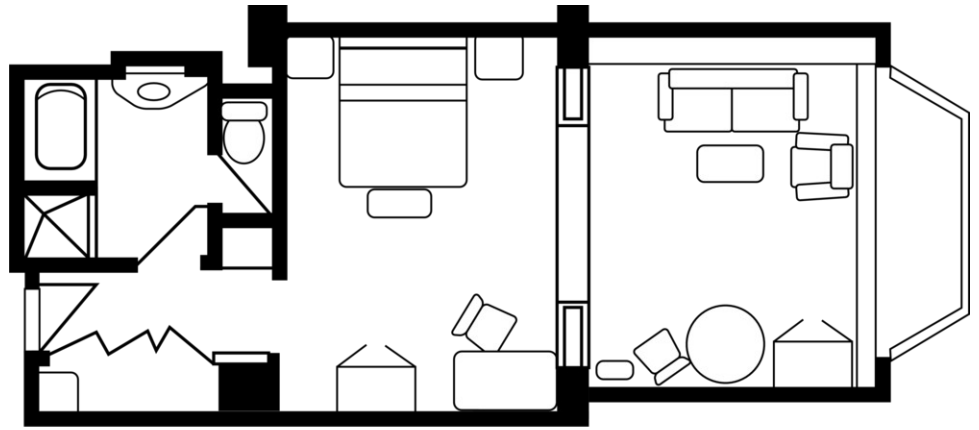
All suites at Four Seasons Hotel Tokyo at Chinzan-so overlook the famed gardens. Deluxe Garden Suites offer more living space than our Executive Suites, and Premier Gardens Suites increase the sense of comfort with large dressing areas in the master bedroom. The Japanese Suite observes the design traditions of Japan, including two tatami rooms. The Conservatory Suite includes a separate light-filled atrium living space.

Four one-of-a-kind two- and three-bedroom specialty suites highlight floor-to-ceiling windows with premium garden views from the upper floors of the Hotel. Two-bedroom suites begin with the elegant Ambassador Suite. Offering almost twice the space, the Presidential Suite can host a dinner for up to 10. The Royal Suite is equivalent in size but situated on the top floor of the Hotel. The Imperial Suite is the ultimate in space and comfort, with views spanning both the gardens and the city.

CONSERVATORY ROOM

Number 4
Beds King or two twin beds
Size 64 m²
688 sq ft

Location
5th floor
View
Bay window with a private atrium

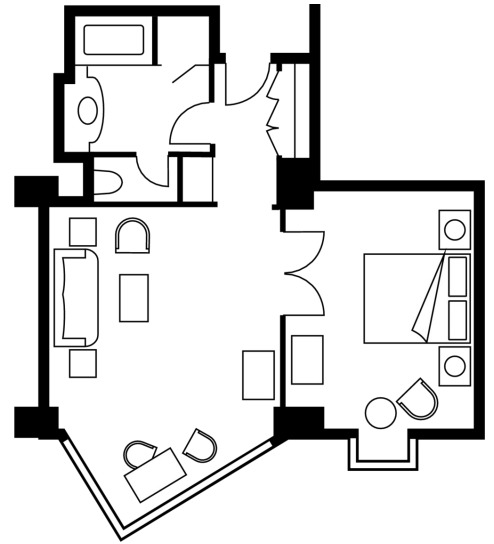


FOUR SEASONS EXECUTIVE GARDEN

SUITE

Number 8
Beds King or two twin beds
Size 60 m²
645 sq ft

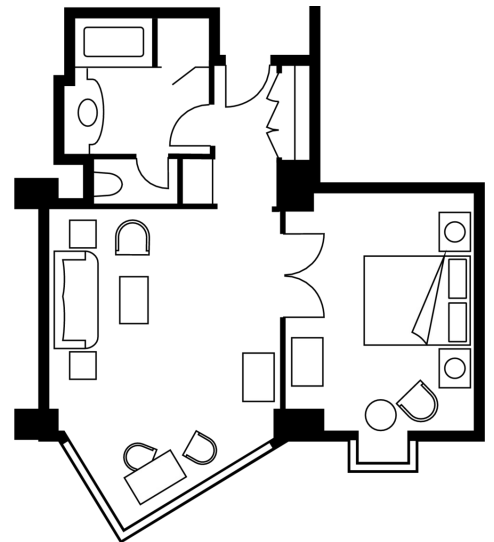
Location
6th to 14th floors
View
Japanese gardens



FOUR SEASONS EXECUTIVE SUITE

Number 17
Beds King or two twin beds
Size 60 m²
645 sq ft

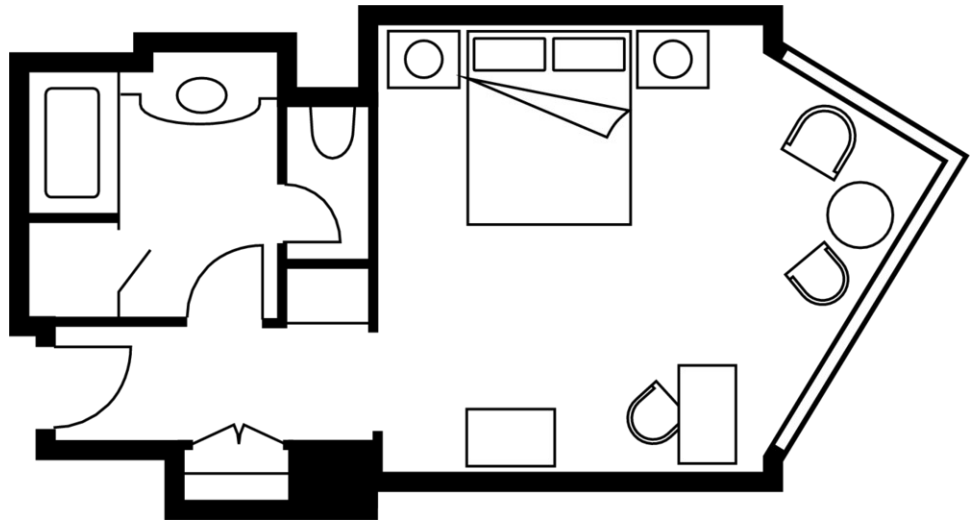
Location
5th to 14th floors
View
Tokyo skyline



SUPERIOR GARDEN-VIEW ROOM

Number 91
Beds King or two twin beds
Size 45 m²
484 sq ft

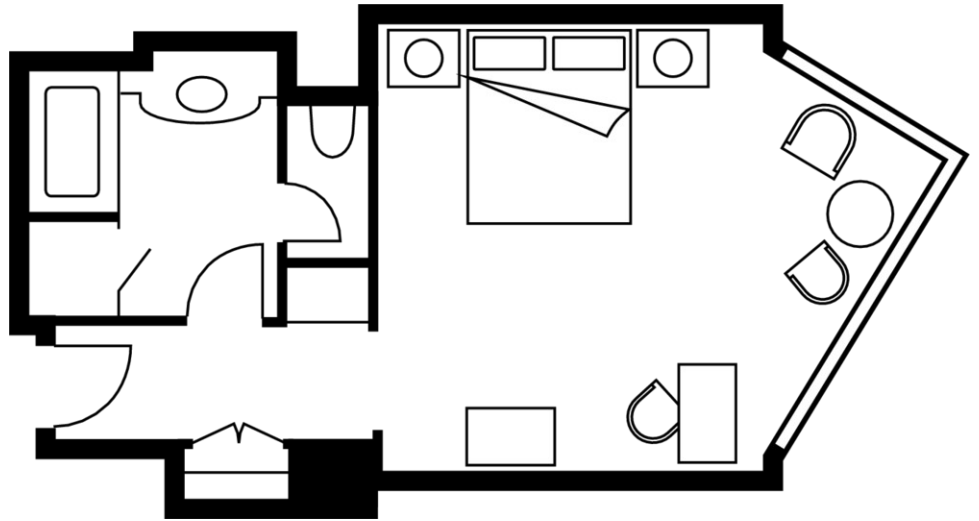
Location
6th to 14th floors
View
Japanese Gardens



SUPERIOR ROOM

Number 99
Beds King or two twin beds
Size 45 m²
484 sq ft

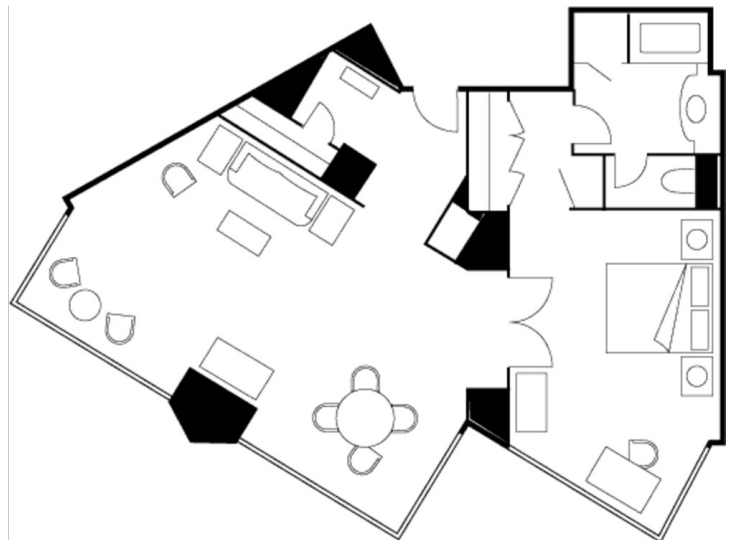
Location
5th to 14th floors
View
Tokyo skyline



PREMIER GARDEN SUITE

Number 7
Beds King or two twin beds
Size 93 m²
1,000 sq ft

Location
6th to 12th floors
View
Japanese gardens



AMENITIES

- Alarm clock
- All news cable network
- CD player
- Complimentary newspaper
- Connection for MP3 players
- Down duvets
- Down pillows
- DVD player (Region Code 2 only)
- Fax machine on request
- Hair dryer
- Hypo-allergenic pillows on request
- In-room safe
- Multi-line telephone(s) with conference call capability
- Multi-line telephone(s) with multi-language voicemail
- Refrigerated private bar
- Satellite television
- Tea/coffee maker
- Thick terry bathrobes
- Twice-daily housekeeping service
- Video On Demand
- Wired or wireless Internet access

GUEST SERVICES

- 24-hour In-Room Dining
- 24-hour laundry/dry-cleaning/pressing
- 24-hour multilingual Concierge
- Complimentary overnight shoeshine
- Non-smoking rooms
- One-hour pressing
- Private dining room
- Restaurant
- Self-parking
- Services and amenities for younger guests
- Umbrellas
- Valet parking

VIP GIFTS AND WELCOME AMENITY

Special arrangements can be made for clients to purchase welcome amenities for their VIP guests, including:

- Traditional Japanese *yukata* (cotton robes)
- Sake set
- A *happi* coat branded with your logo. Happi coats are worn during festivals in Japan.
- Rare sake by Kekkeikan, Japan's oldest sake brewery.
- A tea set, used during tea ceremonies in Japan.

DINING HOURS OF OPERATION

Miyuki

Breakfast

Saturday, Sunday and national holidays 7:00 am - 10:00 am

Lunch

Monday to Friday 11:30 am - 2:00 pm

Saturday, Sunday and national holidays 11:30 am - 2:30 pm

Dinner

Sunday to Thursday 5:30 pm - 9:00 pm

Friday and Saturday 5:30 pm - 10:00 pm

Seasons Bistro

Every day 11:30 am - 11:00 pm

Il Teatro

Breakfast 6:30 am - 11:00 am

Lunch noon - 2:30 pm

Dinner 5:30 pm - 10:00 pm

Le Jardin

Every day 9:30 am - 10:30 pm

Afternoon tea

Monday to Saturday and national holidays noon - 6:00 pm

Afternoon tea

Sunday 1:00 noon - 6:00 pm

Le Marquis

Every day 6:00 pm - midnight

In-Room Dining

Breakfast 6:00 am - 11:30 am

All-day dining 11:30 am - 10:00 pm

Night owl 10:00 pm - 6:00 am

DINING

Visit Miyuki for teppanyaki, kaiseki, tempura, shabu-shabu and sushi. Celebrate Italian festivals throughout the year in the drama of Il Teatro. Savour casual Mediterranean home-style cooking – with an extensive vegetarian selection – at Seasons Bistro. Or pause for a light meal or beverage at Le Jardin or cocktails in the warmth of Le Marquis.

RESTAURANTS

Miyuki

Featuring authentic Japanese décor with stone carvings and magnificent pottery, Miyuki is located on the second floor, overlooking Chinzan-so gardens. Classic Japanese cuisine is served on exquisite Japanese china by staff in traditional kimonos. Chairs are available for all tables to accommodate guests' seating preference.

- Cuisine: Japanese
- Indoor seating: 115, including 12 in the sushi corner and 10 at the grill

Seasons Bistro

The bistro offers international favourites in a casual but elegant atmosphere on the third floor of the Hotel, featuring Western décor with polished wood tables. An extensive vegetarian selection and a weekly lunch and dinner set menu are available.

- Cuisine: International
- Indoor seating: 42

Il Teatro

This formal Italian restaurant, overlooking Chinzan-so gardens from the Hotel's third floor, offers authentic scents and flavours in the Milanese tradition. Elegantly furnished with European décor and Venetian glass chandeliers, Il Teatro also offers two private dining rooms for greater exclusivity. Open for breakfast, lunch and dinner daily.

- Cuisine: Italian
- Indoor seating: 104

LOUNGES

Le Jardin

Wall-to-wall windows welcome in the beauty of the surrounding gardens in this bright airy room, located on the lobby level of the Hotel. Ideal for afternoon tea or evening cocktails.

- Indoor seating: 100

Le Marquis

Integrated with the tones of noble wooden grained walls, this clubby bar is appointed with tranquil and dignified European-style furniture and fixtures.

- Indoor seating: 54

RECREATION FACILITIES

Enjoy a refreshing dip in the pool, or lounge year-round in the warmth of the solarium. Keep up your workout routine around the clock at the fitness centre. Reward yourself by indulging at YU, THE SPA at Four Seasons Hotel Tokyo at Chinzan-so – complete with spa suites for two featuring side-by-side massage tables and outdoor baths amongst Japanese maples.

SPA SERVICES

YU, THE SPA at Four Seasons Hotel Tokyo at Chinzan-so, is an urban sanctuary, set in the Hotel's tranquil garden setting. The comprehensive spa facilities feature eight treatment rooms including a double room and a spacious 115-square-metre (1,238-square-foot) Yusui/VIP spa suite incorporating European and Oriental influences.

The Yusui/VIP Suite, a perfect space for quiet contemplation, is furnished with large sofas in a private and intimate setting. Facilities also include traditional Japanese cedar baths indoors, and a heated, all-weather swimming pool with a retractable roof.

- Size: 2,068 m² / 22,260 sq ft
- Number of treatment rooms: 8

FITNESS FACILITIES

The Health Club at Four Seasons Hotel Tokyo at Chinzan-so features a gym complete with the latest work-out and weight-training equipment, as well as an indoor pool with retractable roof. The Hotel also offers traditional Japanese "Onsen" baths, with mineral water which is shipped in to the Hotel on a regular basis.

- Size: 372 m² / 4,000 sq ft

POOL

In the relaxed garden atmosphere of a solarium setting, this indoor heated pool features a retractable roof to admit fresh air. The pool measures 22 x 6 x 1.2 square metres (72 x 19 x 4 square feet), and the water temperature is maintained at 29 to 30° C (84 to 86° F).

GOLF

Camellia Hills Country Club

The Camellia Hills golf course is a full-service facility, consisting of an 18-hole course and an extensive clubhouse. As is traditional in Japan, the clubhouse also features large onsen baths to wind down after a full round of golf. Meals are served at the clubhouse. Guests of Four Seasons Hotel Tokyo at Chinzan-so enjoy golfing privileges. For further information and reservations, please contact the Concierge.

INCENTIVE ACTIVITIES

Sample itinerary

Four Seasons can help customise itineraries for your group or party which celebrates the distinctive sights and sounds of Tokyo, making each day a unique experience. The following is a sample group itinerary. We invite you to discuss your needs with us.

Day 1 Arrival at Hotel
After a warm personal greeting at the airport, guests arrive at the Hotel for check-in. They can spend a leisurely afternoon exploring the Hotel's facilities:

- Recover from jetlag with a spa treatment at Yu.
- Stroll through the Hotel's famous Chinzan-so Gardens.
- Re-invigorate tired muscles with a workout in the Fitness Centre.
- Enjoy afternoon tea in Le Jardin.

Evening

- Four Seasons staff escort guests through the garden to the ancient pagoda for cocktails and hors d'oeuvres, followed by dinner.
- This evening's turndown gift is a traditional Japanese *yukata* (cotton robe).

Day 2 Morning
Enjoy a leisurely private breakfast buffet before starting the day's activities.

Afternoon

- Learn to make sushi at the Sushi Cooking School, followed by sake tasting.
- Tour Hama-rikyu Gardens, which dates back to Japan's Edo period.
- Tour Tokyo National Museum and attend a historical lecture.

Evening

- Sample rare traditional Kyoto cuisine served in a Japanese-style setting.
- Watch a traditional Taiko Japanese drum demonstration.
- This evening's turndown gift is a sake serving set for two and a gift bottle of sake.

Day 3 Morning
Enjoy a leisurely private breakfast buffet before starting the day's activities.

- Arrange a private yoga session in the serene surroundings of the Chinzan-so Gardens.
- Spend the day exploring mysterious Mount Fuji with a guide.
- Golf at the Camarilla Hills Country Club.
- Shop in the Ginza area.

Afternoon

- Lounge around the Hotel pool after a pampering treatment at Yu spa.
- Watch a Japanese bonsai demonstration.
- Visit Meiji Shrine in Harajuku.

Evening

- Dine-around in Roppongi, where some of Tokyo's best restaurants

and hottest night clubs are located.

- This evening's turndown gift is a Japanese tea set.
-

Day 4

Morning

Enjoy a leisurely private breakfast buffet before starting the day's activities.

- Workout in a private water aerobics class.
- Join a private tour of Tokyo Tower to enjoy an aerial view of the city.
- Tour Zojoji Temple and attend a lecture on its history.
- For electronic enthusiasts, Akihabara's Electric Street is the place to shop for electronic equipment and cameras rarely available outside of Japan.

Afternoon

- Guests are provided with train or taxi passes to explore Shibuya, Harajuku, Ginza and other districts.

Evening

- View Tokyo from a helicopter, enroute to dinner in Tokyo Bay on board the luxury yacht Crystal Cruise.
 - This evening's turndown gift is an assortment of Japanese green teas and a photo of the group's visit to Japan.
-

Day 5

Morning

Guests depart at leisure after a farewell brunch.

www.fourseasons.com/tokyo

Rooms	Dimensions		Size		Height		Classroom	Hollow square	U-shape	Theatre	Reception	Banquet rounds	Conference/ boardroom
	(m)	(ft)	(m ²)	(sq ft)	(m)	(ft)							
- Ballroom	18.7 x 32.5	61.4 x 106.6	634	6824	6	19.6	350	120	100	600	500	300	-
- Wisteria Room	13.9 x 20.4	45.6 x 67	283	3045	3.0	9.8	150	70	55	250	180	120	40
- Maple Room	11.1 x 20.4	36.4 x 67	228	2454	3	9.8	90	60	50	180	120	90	40
- Bamboo Room	11.1 x 20.4	36.4 x 67	220	2368	3	9.8	90	60	50	180	120	90	40
- Poplar Room			170	1,829	3	9.8	42	24	20	70	60	50	24
- Amphitheatre	12.5 x 18	41 x 59	225	2,421			98	-	-	-	-	-	-
- Ginkgo Room	16.5 x 15.2	54.1 x 50	251	2,702	3	9.8	100	65	50	180	150	100	50
- Hickory Room	11.1 x 20.4	36.4 x 67	214	2303	3	9.8	90	60	50	180	120	90	40
- Pine Room	7 x 11	22 x 36	76	818	3	9.8	16	18	16	24	30	24	14
- Oak Room 1	8 x 11	26 x 36	88	947	3	9.8	-	-	-	-	30	10	10
- Oak Room 2	8 x 11	26 x 36	88	947	3	9.8	-	-	-	-	30	10	10
- Oak Room 3	8 x 11	26 x 36	88	947	3	9.8	-	-	-	-	30	10	10
- Sakura Room	10 x 7	33 x 23	70	753	3	9.8	-	-	-	-	-	16	16
- Chestnut Room	5 x 8.3	16.4 x 27.2	43	463	3	9.8	-	-	-	-	-	10	10
- Magnolia Room	8.3 x 8.3 + 4.8 x 4.8	27 x 27 + 15 x 15	92	990	3	9.8	-	-	-	-	30	10	10