



## Quick Reference Guide

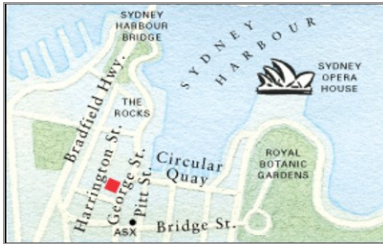
---

Last updated May 3, 2012 | For additional information please contact the hotel directly

---

Four Seasons Hotel Sydney  
199 George Street, Sydney, NSW, 2000, Australia  
Tel 61.2.9250.3100 | Fax 61.2.9251.2851

[www.fourseasons.com/sydney](http://www.fourseasons.com/sydney)



Stunningly situated overlooking Sydney Harbour Bridge and the Opera House, Four Seasons is a vibrant, charismatic destination – combining iconic views with friendly Australian charm. The location in the historic Rocks district is just a short walk from shopping and business.

199 George Street  
Sydney, NSW 2000, Australia  
Tel 61.2.9250.3100  
Fax 61.2.9251.2851

#### AIRPORT

- Kingsford-Smith International Airport (SYD): 25 minutes (15 kilometres/9 miles)

#### TABLE OF CONTENTS

- 2 Introduction
- 4 Destination
- 8 Conference Facilities
- 16 Guest rooms, Suites and Private Residences
- 23 Dining
- 24 Recreational Facilities
- 26 Incentive Activities
- 28 Appendix: Conference Chart



A signature landmark on the harbourfront, Four Seasons Hotel Sydney offers the city's most desirable setting. The dramatic lobby – a three-level atrium – provides a fitting introduction to the impressive interiors. Among the attractions are award-winning dining, a pampering day spa with fitness centre and outdoor pool, and over 1,317 square metres (14,176 square feet) of prestigious function space.

In the 34-storey tower, Four Seasons offers 531 guest rooms – including 121 suites – to provide outstanding flexibility for large groups. More than half of the accommodations enjoy full or partial harbour views, while others offer dramatic city perspectives. For added amenities and services, an Executive Club on the 32nd floor is open to all guests for a nominal fee. With service that anticipates every request, Four Seasons makes it easy to enjoy all the very best of Sydney.

#### TRANSPORTATION

The Sydney Kingsford Smith Airport is a 25-minute drive from the Hotel and serves all

major airlines. The Hotel can arrange rental vehicles, including sedans, sports cars, specialty cars, trucks, vans or minibuses, through major rental agencies. Limousines are also available. The Hotel offers parking for approximately 100 cars.

---

---

WEATHER CHART

---

Month	°C		°F	
	Highs/Lows	Highs/Lows	Highs/Lows	Highs/Lows
January	26	/ 18	79	/ 65
February	26	/ 18	79	/ 65
March	25	/ 17	77	/ 63
April	22	/ 13	72	/ 57
May	20	/ 10	68	/ 50
June	17	/ 8	63	/ 45
July	16	/ 6	62	/ 44
August	17	/ 8	63	/ 46
September	20	/ 10	68	/ 50
October	22	/ 12	72	/ 55
November	23	/ 15	75	/ 59
December	25	/ 17	77	/ 63

---

DESTINATION

Chic and cosmopolitan, with a dynamic sense of diversity, Sydney is one of the world's great capitals. The city was founded in 1788 when a fleet of 11 ships arrived in Australia from England with a contingent of convicts and free settlers. They came ashore at Sydney Cove, now known as Circular Quay and the site of Four Seasons Hotel Sydney. Successive waves of immigrants from many countries have had a defining influence on the culture and personality of the city, now with a population of over four million people.

As a business centre, Sydney is the driving force of Australia and an important hub of the Asian-Pacific region. For recreation, the city pulses with a vibrant social scene and inspiring possibilities for outdoor adventure. Few cities of such urban sophistication can also claim 37 beautiful beaches. Legendary Bondi Beach is an easy 20-minute drive from downtown.

Four Seasons is situated in the oldest and most desirable area of Sydney – the historic district of The Rocks. Lined with cobblestoned streets, the neighbourhood offers fascinating shops, a weekend market, outdoor cafés, and galleries of Aboriginal arts and crafts. Nearby, at the Royal Botanic Gardens, tropical flowers bloom in the heart of the city. The Hotel is just a short walk from major shopping and business areas, and is equally close to great museums, theatres and the Sydney Opera House. Ferries whisk you across the water to key attractions, such as Taronga Park Zoo and the renowned Sydney Aquarium.

WEATHER

When it is winter in the northern hemisphere, it is summer in Australia, in the southern hemisphere, and vice versa. That means midwinter in Australia is July and August, and the hottest months are November to March.

LOCAL ATTRACTIONS AND ACTIVITIES

At Four Seasons, you enjoy a unique vantage point from which to explore the sights, sounds and experiences around you. We hope the highlights of local attractions below help simplify your planning. Please let us know how else we can assist you.

*Within a few minutes walk of the Hotel*

Rocks District:

- The historic Rocks district, site of Sydney's first settlement, includes many colonial buildings that now house upscale restaurants, cafés, native arts and craft galleries and an international design enclave.

Sydney Harbour:

- Sailing on Sydney Harbour is the perfect way to get a sense of the city and to take in the scope and beauty of its coastline and beaches.

Harbour Bridge :

- Sydney Harbour Bridge is the world's largest steel arch bridge. Opened in 1932, it carries eight vehicle lanes, two railway lines, a footpath and a cycle way. BridgeClimb is a three-hour excursion that allows adventurers to climb to the top of the bridge, 134 metres (440 feet) above sea level. Regular groups depart day and night, accompanied by a professional climb leader.

#### Sydney's Restaurants:

- In the last decade, Sydney has emerged as an exciting food destination. Seafood, high-quality lamb and beef, and new varieties of fruits and vegetables – all prepared in fresh and innovative ways – make the city a food lover's paradise. Sydney's restaurants range from simple beach-side cafés to leading-edge examples of modern cuisine.

#### Shopping:

- Shopping in Sydney is world-class – everything from high-fashion designer labels to boomerangs is available.

*Within a 5-minute walk of the Hotel*

#### Museum of Contemporary Art:

- The Museum of Contemporary Art has an international reputation for cutting-edge exhibits.

*Within a 10-minute walk of the Hotel*

#### Sydney Opera House:

- The Sydney Opera House, named one of the modern wonders of the world, is a short stroll from the Hotel. Home to Opera Australia and the Australian Ballet, it also hosts the Sydney Dance Company and the Sydney Theatre Company. No visit to Sydney is complete without attending a performance or taking a tour of the building.

#### Museum of Sydney :

- The Museum of Sydney is built on the site of the first Government House, and showcases contemporary and colonial Sydney through exhibitions and interactive displays.

*Within a 15-minute walk of the Hotel*

#### Royal Botanic Gardens:

- At the edge of Sydney's downtown is the Royal Botanic Gardens, an oasis of green and quiet at the harbour's edge. It includes a distinctive array of native Australian plants and examples of English-, European- and American-introduced species, laid out in the manner of a formal English garden. The Botanic Gardens' tropical plant collection is housed in a temperature-controlled glass pyramid inspired by I.M. Pei.

*Within a 20-minute walk of the Hotel*

#### Australian Museum :

- Established in 1827, the Australian Museum was Australia's first museum. It focuses on natural history and indigenous studies research, community programmes and exhibitions, with extensive collections of natural science and cultural artefacts.

*Within a few minutes drive of the Hotel*

#### Sydney Tower:

- The tallest building in Sydney, the Sydney Tower is located in the centre of town,

offering visitors a chance to experience the best view of the city's surroundings.

*Within a 5-minute drive of the Hotel*

Cockle Bay, Darling Harbour and King Street Wharf:

- Cockle Bay, Darling Harbour and King Street Wharf are Sydney's newest restaurant districts, with five-star and themed restaurants, cafés and bars. Harbour tours regularly stop here.

Sydney Aquarium:

- The Sydney Aquarium at Darling Harbour is one of the city's most popular attractions. Visitors walk through tunnels beneath the sea to see sharks, stingrays and crocodiles. Over 650 species of aquatic life are on display, representing diverse habitats ranging from the cold southern oceans to the tropical waters of the Great Barrier Reef and from rocky shores and estuaries to the slow-moving rivers meandering through the dry, flat plains of the Australian interior.

Art Gallery of New South Wales:

- The Art Gallery of New South Wales was formally established in 1874 and is home to some of the world's most outstanding art collections.

*Within a 10-minute drive of the Hotel*

Sydney Fish Market:

- Australia's only working fishermen's market, the Sydney Fish Market is colourful and vibrant. Each weekday morning, 1,000 crates of seafood are auctioned every hour – 65 tonnes of fresh catch daily. Visitors and locals alike come to the market for the fresh seafood, including live mud crabs, delicately sliced sashimi salmon, king prawns, coral trout and fried calamari.

Powerhouse Museum:

- Located at Darling Harbour, the Powerhouse Museum focuses on social history, music, science, technology, design, industry, decorative arts, transport and space exploration.

Luna Park:

- Free to enter, Sydney's Luna Park offers an all-in-one venue for events, entertainment, rides and games. You can also sit back, relax and indulge in the expansive food selection, with the Sydney Harbour and Opera House as a backdrop.

*Within a 20-minute drive of the Hotel*

Taronga Park Zoo :

- Taronga Park Zoo is home to more than 3,000 animals from around the world, including koalas, kangaroos, platypus and Tasmanian devils. Its elevated location offers outstanding views of Sydney Harbour. The zoo is 20 minutes from the city by car or a short ferry ride from Circular Quay.

*Within a 30-minute drive of the Hotel*

Beaches:

- There are 37 beaches in Sydney's metropolitan area, providing a much-loved respite for local residents and visitors. With joggers, swimmers, surfers and children at the water's edge, the vibrant beach scene is Sydney's playground all year round. Bondi, the city's best-known beach, is 30 minutes from the city. Manly Beach is a short commuter ferry ride away.

*Within a 40-minute drive of the Hotel*

Stadium Australia :

- Stadium Australia (the Olympic stadium) is spectacular in its concept, scale, complexity and sheer beauty. Guided tours take visitors through many of the back-of-house and restricted areas.

*Within a 2-hour drive of the Hotel*

Hunter Valley :

- The vast Hunter Valley is home to over 100 wineries and hosts over one million visitors annually. Known for its fertile soil, it has a winemaking tradition going back over 150 years. A magnet for wine buffs, the area also offers fascinating colonial towns, rugged national parks and a wide range of scenery and activities.

Blue Mountains :

- The Blue Mountains get their colour from an atmosphere laden with fine droplets of oil from the dense growth of eucalyptus trees. Bushwalking, rock climbing, abseiling and horseback riding are just some of the activities offered.

**CONFERENCE FACILITIES OVERVIEW**

Total Space	1,317 m <sup>2</sup> 14,176 sq.ft.
Largest Ballroom	683 m <sup>2</sup> 7,352 sq.ft.
Meet and Feed (max. capacity)	250
Breakouts	7
Banquet (max. capacity)	550
Outdoor Banquet (max. capacity)	-
Private Dining (max. capacity)	16

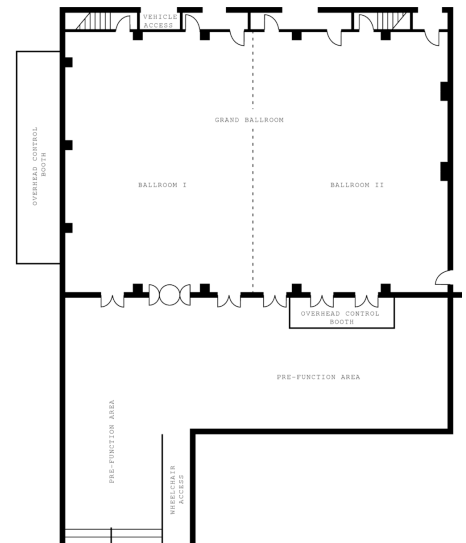
**CONFERENCE FACILITIES**

Recognised as the city's most prestigious venue for incentive groups, corporate gatherings, board meetings, social events and private dinners, Four Seasons Hotel Sydney offers over 1,317 square metres (14,176 square feet) of function space.

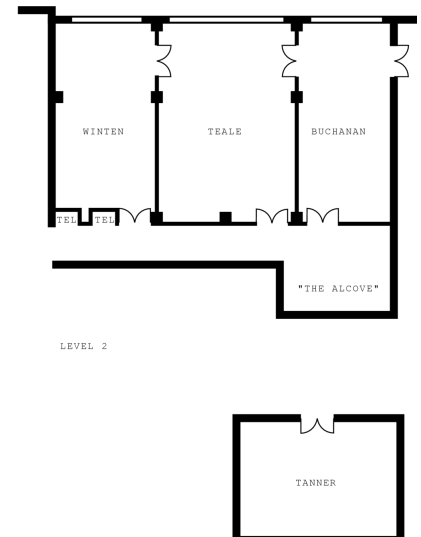
Conveniently located on the main lobby level, the magnificent pillarless Grand Ballroom – divisible into two smaller ballrooms – comfortably holds 550 guests in an elegant dinner setting and 1,000 theatre-style. The ballroom invites unlimited decorating possibilities, enhanced by sophisticated audio, light and sound facilities and full on-site technical support. Five additional meeting and conference rooms located on the second and third levels offer flexibility to suit groups from 20 to 150.

To facilitate the arrival of large parties, the Hotel features an exclusive group arrival area on the third level, including satellite check-in desks, a hospitality room and an adjoining lounge – perfect for cocktail welcome parties.

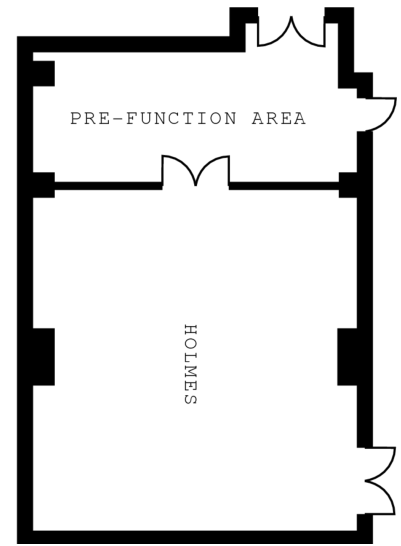
*Level one - Grand Ballroom*



*Level two and three*



*Level one - Holmes*



---

**TECHNICAL ASSISTANCE**

The Hotel continually updates its audiovisual presentation equipment. Telecommunications and electrical hook-ups are designed to meet or exceed industry standards. Special arrangements can be made to fulfil any request, and the standard inventory includes the following:

- Lecterns
- Data projectors
- LCD colour display panels, slide projectors and equipment necessary for rear projection and multi-image dissolve programming
- Video cameras, recorders, players and projectors
- Screens, flipcharts, easels and marker boards

Also available:

- Videoconferencing
- Roboscan intelligent lighting system
- Special effects
- Large-scale video and multimedia displays (screen sizes range from a 72-centimetre (183-inch) monitor to a 10-metre (33-foot) screen; the equipment is supported by technicians on site)
- Broadcast quality video recording and image magnification
- Professional audio system
- Wired or wireless Internet access in meeting rooms

**MUSIC AND ENTERTAINMENT**

Our team of Conference Service Managers can arrange music and entertainment to complement any part of your function or event.

**RECEIVING AND MAINTENANCE**

All packages should be sent to the attention of a function's name and its Conference Services Manager. Limited space is available for the storage of large items. Please time shipping to the date of your arrival. Receiving facilities include a large-capacity loading dock with offstreet access; loading dock and car access available to Ballroom; banquet

storage room for pre- and post-event storage; and a dedicated tracking system for all goods and deliveries within the Hotel.

#### *Maintenance*

The Engineering Department is available for general assistance with lighting, room temperature control and minor repairs.

#### SPOUSE PROGRAMMES

The Hotel offers a variety of activities of interest to spouses of meeting participants. The Concierge will provide detailed information on specially tailored spouse programmes, including the following:

##### On-site:

- Spa packages
- Chef's Table for 16 guests in the garde manger kitchen

##### Off-site:

- Sydney Harbour cruise – by scheduled cruiser, private yacht or catamaran
- Sydney Harbour Bridge climb
- Australian wildlife: get close to Australia's native animals
- Learn-to-surf classes at Bondi Beach
- Learn-to-sail classes on Sydney Harbour
- Seaplane trip to Palm Beach and dining at clifftop restaurants
- Helicopter trip to Hunter Valley wine country
- Personalised guided tours of Sydney's best shopping
- Four Seasons Picnic in the Royal Botanic Gardens
- Beach picnic, boat picnic or picnic at the horse races (Randwick and Rosehill)

#### CHILDRENS AND FAMILY PROGRAMMES

Four Seasons Hotel Sydney offers a perfect base for families visiting the area, and extends an especially warm welcome to its young guests by providing special amenities such as bedtime cookies and milk, soft drinks and jelly beans, as well as child-friendly place mats, colouring books and pencils in our restaurants. Complimentary items may include use of bottles and bottle warmers, child-sized bathrobes and cribs and/or rollaway bed.

Items to childproof guest rooms can also be provided. Babysitting services may be arranged through the Concierge. Children's menus are available in the restaurants and through In-Room Dining. Our Concierge would be pleased to suggest and help arrange a variety of suitable activities to suit any family's ages and interests and meet the needs of your group. Possibilities include the Taronga Zoological Park, Australian Museum, and Sydney Aquarium and Wildlife World.

#### BUSINESS SERVICES

The Business Centre provides executive support services for international business travellers, 24 hours a day. A conference room is available for meetings, presentations and interviews. Equipped with computers and wireless high-speed Internet access for guest use, the room can accommodate up to 10 people and is serviced by professional staff who are always ready with efficient, expert assistance.

- 24-hour business services
- Airline reservation service

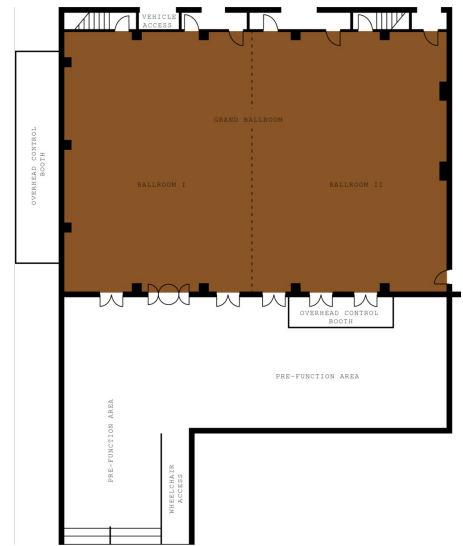
- Audiovisual equipment
- Business centre
- Computers
- Secretarial service
- Wired or wireless Internet access in meeting rooms

**GRAND BALLROOM**

Dimensions	32.5 x 21 m
	106.6 x 68.9 ft
Size	683 m <sup>2</sup>
	7,352 sq.ft.
Height	5.6 m
	18.3 ft

*Capacities*

Classroom	480
Hollow square	180
U Shape	150
Theatre	1,000
Reception	1,200
Banquet Rounds	550

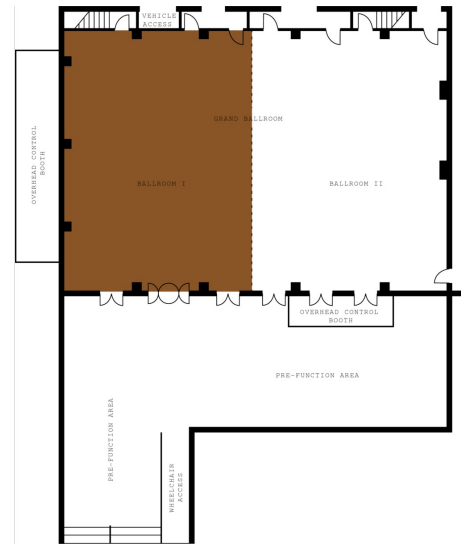


**BALLROOM I**

Dimensions	16.3 x 21 m
	53.5 x 68.9 ft
Size	334 m <sup>2</sup>
	3,595 sq.ft.
Height	5.6 m
	18.3 ft

*Capacities*

Classroom	240
Hollow square	90
U Shape	70
Theatre	440
Reception	500
Banquet Rounds	270

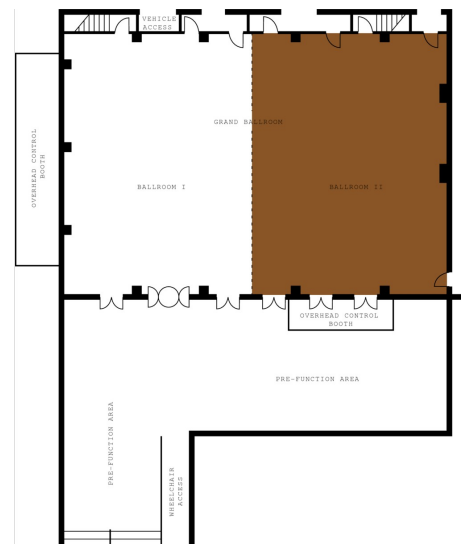


**BALLROOM II**

Dimensions	16.3 x 21 m
	53.5 x 68.9 ft
Size	334 m <sup>2</sup>
	3,595 sq.ft.
Height	5.6 m
	18.3 ft

*Capacities*

Classroom	240
Hollow square	90
U Shape	70
Theatre	440
Reception	500
Banquet Rounds	270

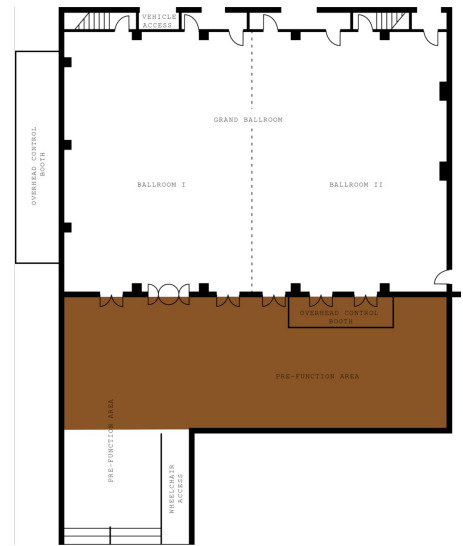


**BALLROOM FOYER**

Dimensions	-
Size	284 m <sup>2</sup> 3,056 sq.ft.
Height	3.2 m 10.5 ft

*Capacities*

Reception	500
-----------	-----

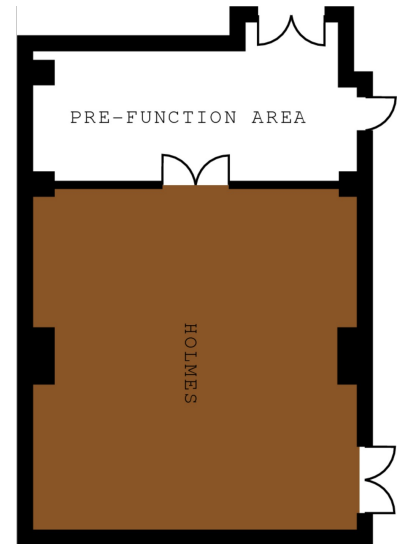


**HOLMES**

Dimensions	8.1 x 9.4 m 26.6 x 30.8 ft
Size	77 m <sup>2</sup> 829 sq.ft.
Height	3.2 m 10.5 ft

*Capacities*

Classroom	42
Hollow square	32
U Shape	28
Theatre	60
Reception	60
Banquet Rounds	50

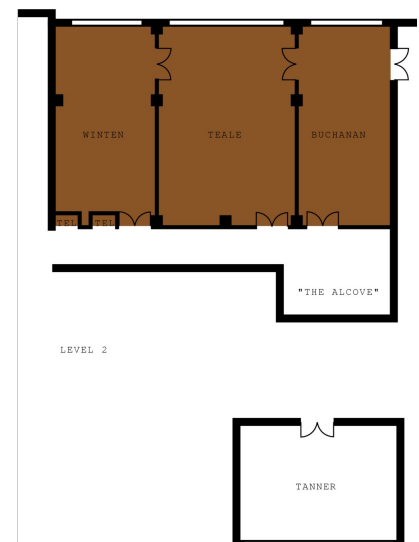


**WINTEN/TEALE/BUCHANAN**

Dimensions	10.3 x 21 m 33.8 x 68.9 ft
Size	216 m <sup>2</sup> 2,328 sq.ft.
Height	2.8 m 9.2 ft

*Capacities*

Classroom	95
Theatre	170
Reception	160
Banquet Rounds	140



**WINTEN**

Dimensions	10.3 x 6 m 33.8 x 19.7 ft
Size	62 m <sup>2</sup> 665 sq.ft.
Height	2.8 m 9.2 ft

*Capacities*

Classroom	36
Hollow square	26
U Shape	22
Theatre	60
Reception	50
Banquet Rounds	30

**TEALE**

Dimensions	11 x 9 m 36 x 29.5 ft
Size	99 m <sup>2</sup> 1,066 sq.ft.
Height	2.8 m 9.2 ft

*Capacities*

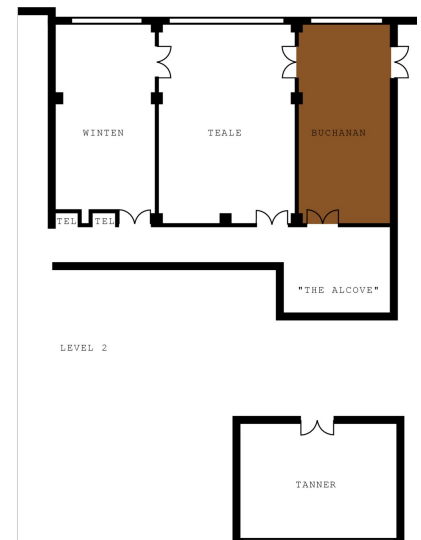
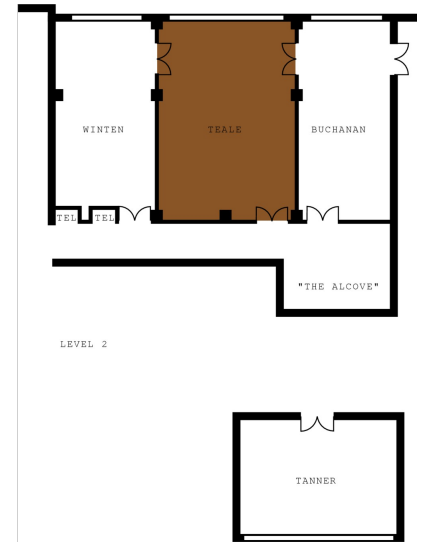
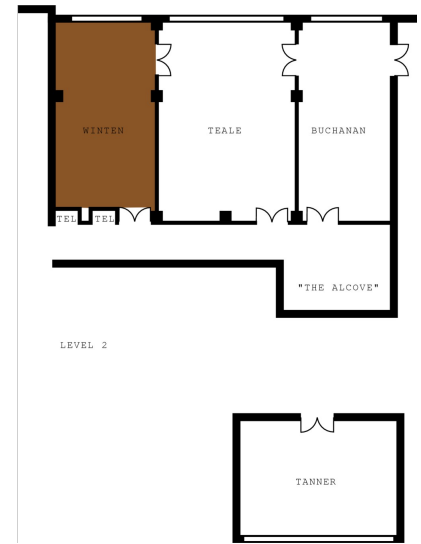
Classroom	54
Hollow square	38
Theatre	80
Reception	70
Banquet Rounds	60
Boardroom	32

**BUCHANAN**

Dimensions	11 x 6 m 36 x 19.7 ft
Size	66 m <sup>2</sup> 710 sq.ft.
Height	2.8 m 9.2 ft

*Capacities*

Classroom	36
Hollow square	26
U Shape	22
Theatre	60
Reception	50
Banquet Rounds	30

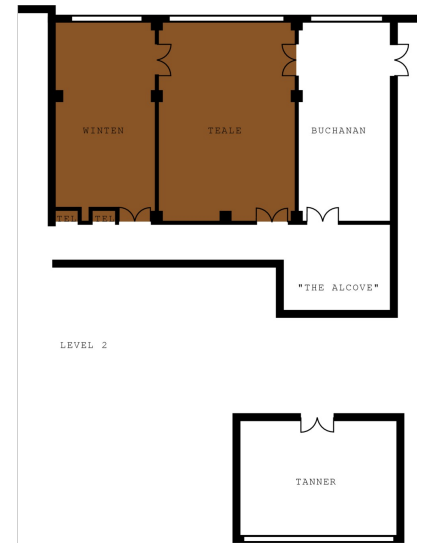


**WINTEN/TEALE**

Dimensions	10.3 x 15 m
	33.8 x 49.2 ft
Size	154 m <sup>2</sup>
	1,663 sq.ft.
Height	2.8 m
	9.2 ft

*Capacities*

Classroom	75
Theatre	100
Reception	120
Banquet Rounds	90

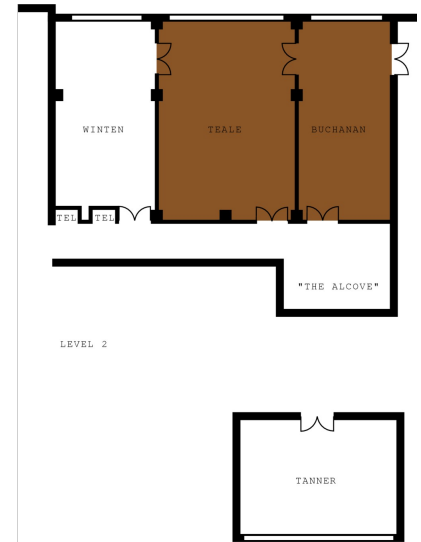


**TEALE/BUCHANAN**

Dimensions	11 x 15 m
	36 x 49 ft
Size	165 m <sup>2</sup>
	1,775 sq.ft.
Height	2.8 m
	9.2 ft

*Capacities*

Classroom	75
Theatre	100
Reception	120
Banquet Rounds	80

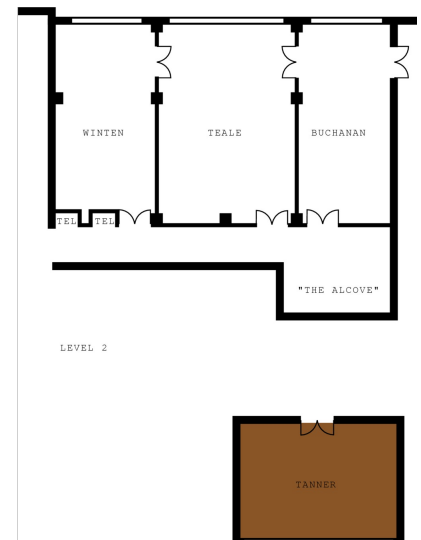


**TANNER**

Dimensions	7 x 6.6 m
	23 x 21.7 ft
Size	46.2 m <sup>2</sup>
	497 sq.ft.
Height	2.8 m
	9.2 ft

*Capacities*

Classroom	24
Hollow square	18
U Shape	16
Theatre	30
Reception	30
Banquet Rounds	30



### GUEST ROOMS, SUITES AND PRIVATE RESIDENCES OVERVIEW

Four Seasons Hotel Sydney offers 531 guest rooms – including 121 suites – quietly secluded in the tower on the 6th through 34th floors. These generously proportioned accommodations are decorated in contemporary grand-luxe style, with rich silks, sophisticated marbles and exotic Honduran mahogany.

Each guest room features a 107-centimetre (42-inch) LCD television with DVD player and iPod/MP3 connectivity. To ease communication, there's high-speed Internet access and fax connections, plus multi-line telephones with private voice mail. Bathrooms are lavishly decorated with Italian spider gold marble and Italian limestone – most including a deep soaking tub and separate glass-walled shower.

Stunning views distinguish the various guest rooms and suites. City-view accommodations overlook the Sydney skyline, George Street or Walsh Bay, while city harbour-view accommodations showcase the Opera House and Circular Quay. Full harbour-view accommodations overlook the Sydney Harbour Bridge, Darling Harbour, the Opera House and Circular Quay.

#### Executive Club

Located on the 32nd floor of the Hotel, the Executive Club offers added amenities and services to all guests for a nominal fee.

<i>Room Category</i>	<i>#</i>	<i>Beds</i>	<i>Size (m<sup>2</sup>)</i>	<i>View (sq ft)</i>	<i>View</i>
- Grand Premier Full Harbour-View Room	40	1 King	53	570	Full views of Sydney Harbour Bridge and Opera House
- Grand Premier City Harbour-View Room	34	1 King or 2 single	53	570	Sydney Harbour, with partial views of the Opera House
- Grand Premier City-View Room	33	1 King or 2 single	53	570	Sydney skyline, George Street or Walsh Bay
- Deluxe Full Harbour-View Room	84	1 King or 2 single	26	280	Sydney Harbour, Harbour Bridge and the Opera House
- Deluxe City Harbour-View Room	116	1 King or 2 single	26	280	Circular Quay with partial views of the Opera House
- Deluxe City-View Room	210	1 King or 2 single	26	280	Sydney skyline looking up Harrington Street or George Street
- Presidential Suite	1	1 King and 2 single	156	1,679	Sydney Harbour
- Deluxe Royal Suite	1	1 King	107	1,152	Harbour Bridge and Sydney Opera House
- Royal Suite	2	1 King	107	1,152	City and Circular Quay or Walsh Bay
- Executive Full Harbour-View Suite	2	1 King	52	570	Panoramic views of the Sydney Harbour and Opera House
- Executive City-View Suite	8	1 King	53	570	Panoramic views of the Sydney city skyline, overlooking George Street or Walsh Bay

#### Guest Room Overview

Four Seasons offers spacious guest rooms defined by distinctive Sydney views. City-View,

City Harbour-View and Full Harbour-View Rooms are comfortably furnished with a lounge chair and coffee table, as well as a business desk and chair. Premier Rooms (City-View, City Harbour-View and Full Harbour-View) are studio-style accommodations with corner locations and expansive views. The open-plan living area includes a lounge area, sleeping and relaxation spaces, and a generous executive business station.

#### *Suites Overview*

On the tower's top floors, spacious Four Seasons suites give an extra measure of comfort and privacy when meeting with colleagues, entertaining friends or relaxing with family. Executive Suites (City-View and Full Harbour-View) offer an expansive living room and a separate bedroom with views of the city from the 33rd and 34th floors. A guest powder room is off the entry foyer.

Crowning the tower on the penthouse 34th floor, Royal Suites offer city and harbour views, while the Deluxe Royal Suite features postcard vistas including the Harbour Bridge and the Opera House. Offering the ambience of a spacious private apartment, these large one-bedroom suites open into an entry vestibule leading into the sitting room and dining area, decorated with specially commissioned Australian artwork.

Also on the 34th floor and occupying the whole northeast corner of the Hotel, the two-bedroom Presidential Suite features stunning views of Sydney Harbour. Major artworks are displayed in the sitting room. The separate dining room seats eight and features an adjoining kitchen with separate access from an outside landing. The master bedroom includes a separate study/dressing room and a spectacular bathroom with a large free-standing oval soaking tub.

GRAND PREMIER FULL HARBOUR-VIEW  
ROOM

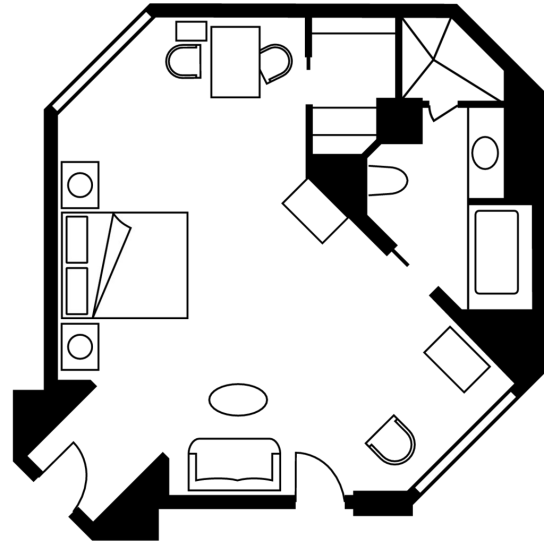
Number 40  
Beds King  
Size 53 m<sup>2</sup>  
570 sq ft

Location

14th to 32nd floors

View

Full views of Sydney Harbour Bridge  
and Opera House



GRAND PREMIER CITY HARBOUR-VIEW  
ROOM

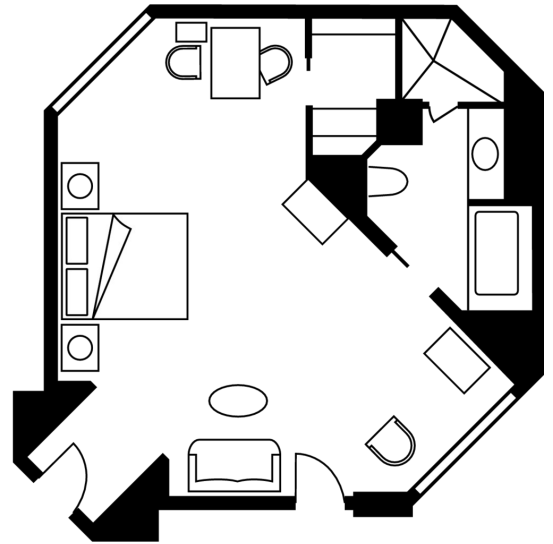
Number 34  
Beds King or two single beds  
Size 53 m<sup>2</sup>  
570 sq ft

Location

6th to 31st floors

View

Sydney Harbour, with partial views of  
the Opera House



GRAND PREMIER CITY-VIEW ROOM

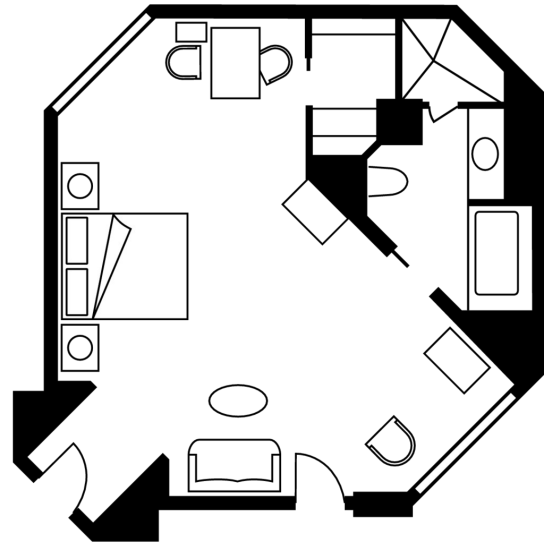
Number 33  
Beds King or two single beds  
Size 53 m<sup>2</sup>  
570 sq ft

Location

6th to 31st floors

View

Sydney skyline, George Street or Walsh  
Bay



**DELUXE FULL HARBOUR-VIEW ROOM**

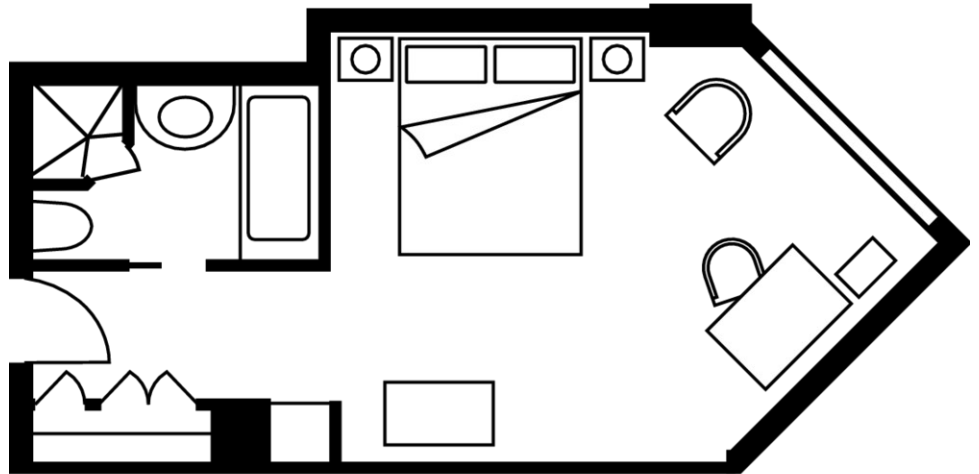
Number 84  
Beds King or two single beds  
Size 26 m<sup>2</sup>  
280 sq ft

*Location*

10th to 32nd floors

*View*

Sydney Harbour, Harbour Bridge and the Opera House



**DELUXE CITY HARBOUR-VIEW ROOM**

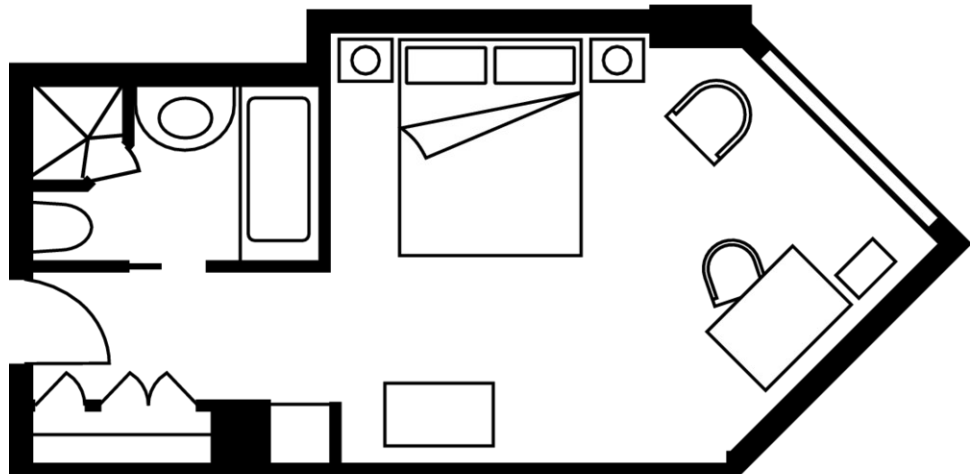
Number 116  
Beds King or two single beds  
Size 26 m<sup>2</sup>  
280 sq ft

*Location*

6th to 32nd floors

*View*

Circular Quay with partial views of the Opera House



**DELUXE CITY-VIEW ROOM**

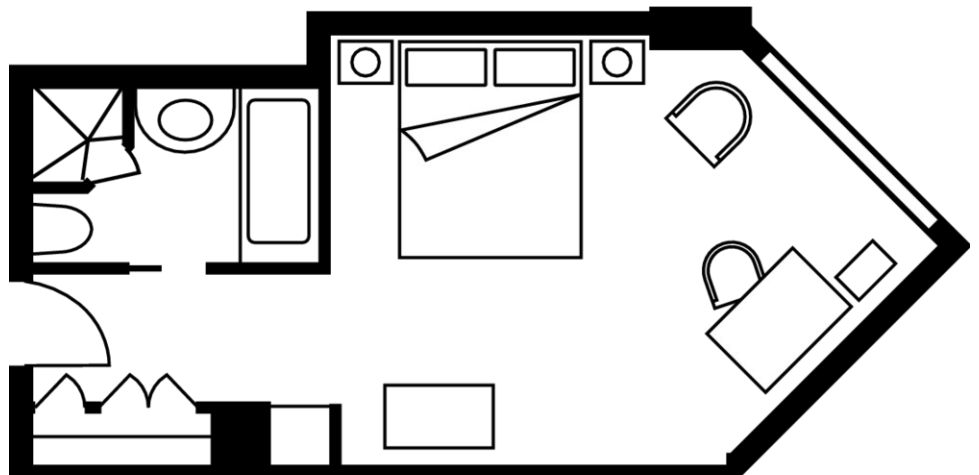
Number 210  
Beds King or two single beds  
Size 26 m<sup>2</sup>  
280 sq ft

*Location*

6th to 33rd floors

*View*

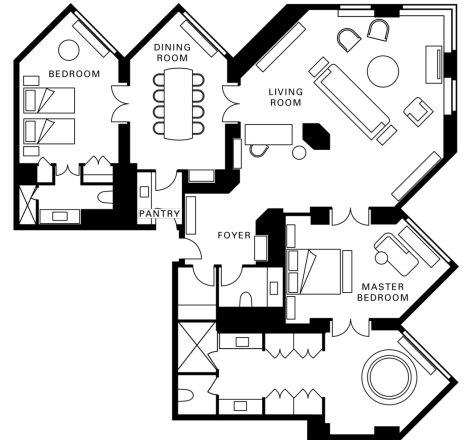
Sydney skyline looking up Harrington Street or George Street



**PRESIDENTIAL SUITE**

Number 1  
Beds One king and two single beds  
Size 156 m<sup>2</sup>  
1,679 sq ft

Location  
34th floor  
View  
Sydney Harbour

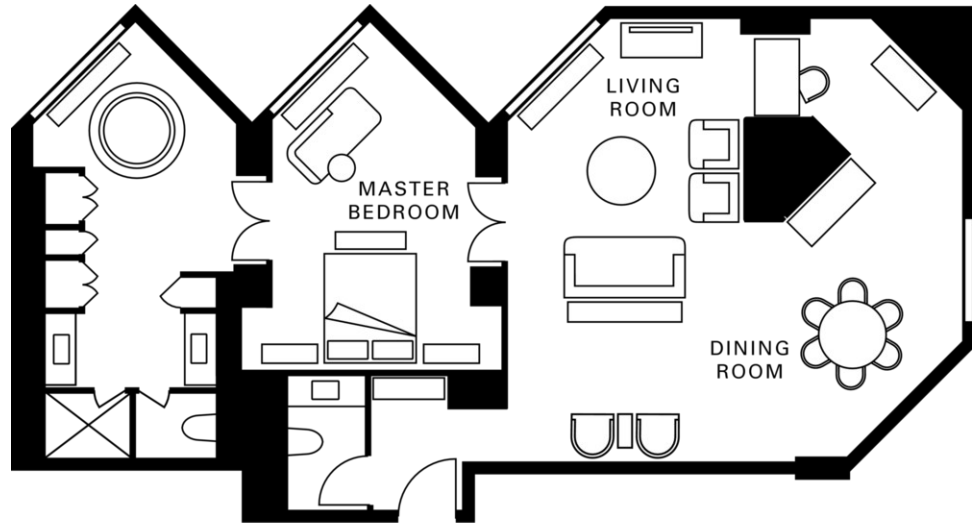


FOUR SEASONS HOTEL SYDNEY  
PRESIDENTIAL SUITE

**DELUXE ROYAL SUITE**

Number 1  
Beds King bed  
Size 107 m<sup>2</sup>  
1,152 sq ft

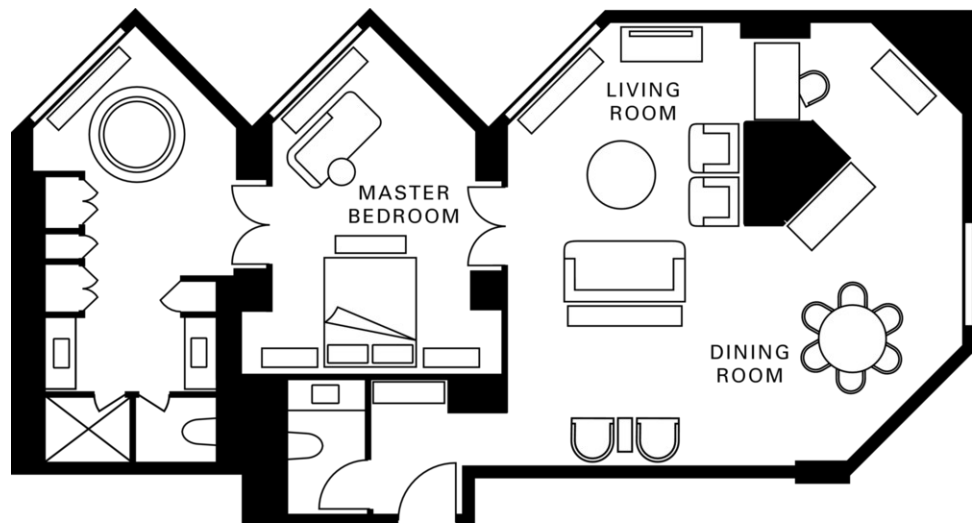
Location  
34th floor  
View  
Harbour Bridge and Sydney Opera House



**ROYAL SUITE**

Number 2  
Beds King bed  
Size 107 m<sup>2</sup>  
1,152 sq ft

Location  
34th floor  
View  
City and Circular Quay or Walsh Bay



EXECUTIVE FULL HARBOUR-VIEW

SUITE

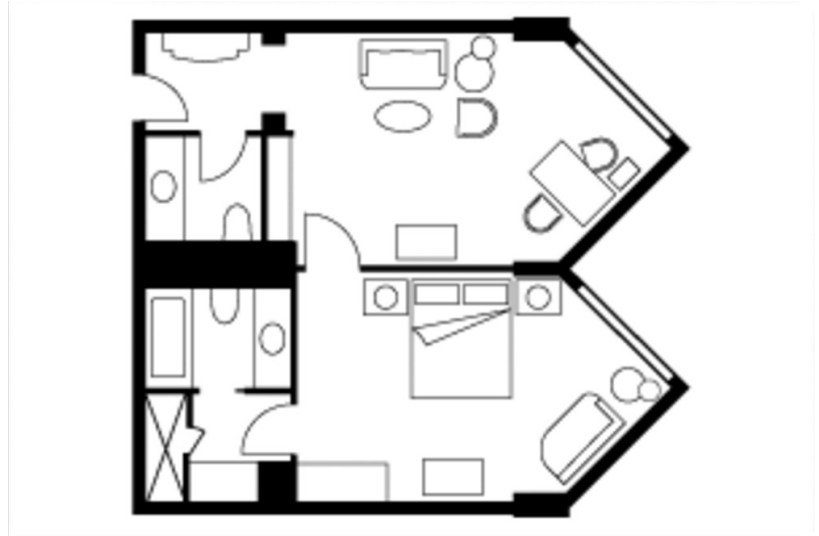
Number 2  
Beds King bed  
Size 52 m<sup>2</sup>  
570 sq ft

Location

33rd floor

View

Panoramic views of the Sydney Harbour and Opera House



EXECUTIVE CITY-VIEW SUITE

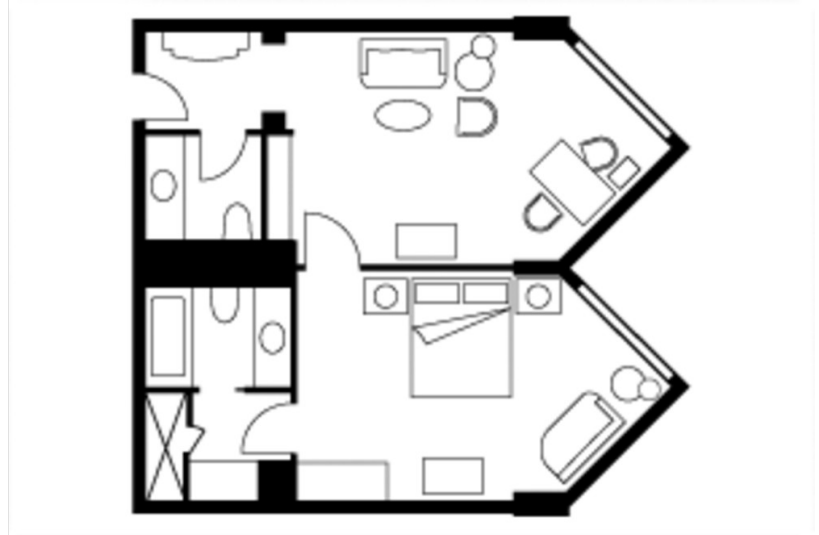
Number 8  
Beds King bed  
Size 53 m<sup>2</sup>  
570 sq ft

Location

33rd and 34th floors

View

Panoramic views of the Sydney city skyline, overlooking George Street or Walsh Bay



#### AMENITIES

- All news cable network
- Clock radio
- Complimentary newspaper with breakfast
- Down pillows
- Fax machine on request
- Hair dryer
- Hypo-allergenic bath soaps on request
- Hypo-allergenic pillows on request
- In-room safe
- Lighted make-up/shaving mirror
- Multi-line telephone(s) with voicemail
- Refrigerated private bar
- Tea/coffee maker
- Thick terry bathrobes
- Twice-daily housekeeping service
- Wired or wireless Internet access

#### GUEST SERVICES

- 24-hour In-Room Dining
- 24-hour laundry/dry-cleaning/pressing
- Complimentary overnight shoeshine
- Express check-in/check-out
- International newspapers
- Multilingual Concierge
- Non-smoking rooms
- One-hour pressing
- Private dining room
- Restaurant
- Services and amenities for younger guests
- Umbrellas
- Valet parking

#### VIP GIFTS AND WELCOME AMENITY

Welcome gifts are available for VIP guests, including the following:

- Deluxe fruit basket
- Chocolate-dipped strawberries with whipped cream
- Australian sparkling wine, French champagne or Australian Cabernet Sauvignon with mature cheese, dried fruits and nuts
- Four Seasons embroidered terry bathrobe
- Four Seasons handmade chocolate truffles
- Selection of Australian beers and nuts
- Deluxe cakes for birthdays and anniversaries

---

---

DINING HOURS OF OPERATION

---

*Kable's*

*Breakfast*

Every day 6:30 am - 11:00 am

*Lunch*

Every day noon - 2:30 pm

*Dinner*

Every day 6:00 pm - 10:00 pm

---

*The Cabana*

October to Mid-December

Saturday and Sunday 11:00 am - 6:00 pm

Mid-December to April

Every day 11:00 am - 6:00 pm

---

*The Bar*

Sunday to Thursday 9:00 am - midnight

Friday and Saturday 9:00 am - 2:00 am

---

*In-Room Dining*

Breakfast 5:30 am - 11:30 am

All-day dining 11:30 am - 11:30 pm

Overnight dining 11:30 pm - 5:30 am

---

DINING

In a city acclaimed for exceptional dining, Four Seasons has earned a truly outstanding reputation in four popular restaurants and bars. Menus highlight quality and creativity – showcasing fresh seafood, contemporary Australian regional specialties and Australia's finest boutique wines.

RESTAURANTS

*Kable's*

Kable's, the Hotel's premier restaurant, offers a relaxed and vibrant atmosphere. Located on level two and accessed from the lobby's sweeping grand staircase, Kable's brasserie-style cuisine features a range of gourmet appetisers, pasta, risotto, meat, fresh seafood and desserts. Kable's wine cellar boasts an extensive list of fine wines. It seats 120, with private dining rooms available for 10 to 40 guests, and a chef's table in the kitchen with seats for up to 16 guests.

- Cuisine: Australian
- Indoor seating: 120

*The Cabana*

Located on the pool deck and open for snacks and lunch, The Cabana features delicious fruit drinks and cocktails for the sun-seeker. Poolside snacks include gourmet sandwiches, salads, and sushi.

- Outdoor seating: 20 on the upper-deck dining area

LOUNGES

*The Bar*

The Bar, with its comfortable and stylish atmosphere, is a preferred meeting place for Sydney executives and visitors. Whether it's a signature Martini before dinner, or a night cap after an evening at the theatre, The Bar offers a cosy environment where guests can relax, any time of the day or evening.

An extensive beverage list features fine Australian wines, an inspired cocktail menu, as well as premium spirits and liqueurs. A light snack menu is also available throughout the day.

- Indoor seating: 80

## RECREATION FACILITIES

To enhance any Sydney stay, the Spa and Fitness Centre encourages personal indulgence in a sanctuary designed for relaxation and rejuvenation. Guests are invited to work out in the complimentary fitness centre, laze by the heated outdoor pool or re-energise in the city's most pampering spa.

### SPA SERVICES

The Spa at Four Seasons offers an intimate, enchanting escape. Our menu of treatments uses indigenous ingredients – essential oils, fruits and floral extracts, salt and clay – to foster the wellness that comes from within. Expert therapists combine techniques from Australia and around the world to provide the ultimate in pampering and rejuvenation, in an atmosphere of comfort and discretion.

Among the Spa's six treatment rooms is a suite especially for couples, which features a private steam shower room, double whirlpool and twin treatment beds. Candlelight, sensuous aromas and calming music set the tone. Men's and women's change rooms each feature a steam room and sauna.

Our attention to detail assures you an experience of total relaxation, allowing you to leave the bustle of the world outside.

- Size: 350 m<sup>2</sup> / 3,767 sq ft
- Number of treatment rooms: 6

### FITNESS FACILITIES

Offering comprehensive fitness facilities, the Spa and Fitness Centre features a well-equipped fitness area with five upright and recumbent bicycles, as well as Lifecycles, StairMasters, treadmills (each with TV monitor and headphones), free weights and weight-training machines. This area also includes Swiss medicine balls, exercise and stretching mats, punching bags and gloves, and a water station.

- Size: 350 m<sup>2</sup> / 3,767 sq ft

### POOL

#### *Outdoor Pool*

The Hotel offers Sydney's largest heated outdoor hotel pool. Triangular in shape, the 20-metre (66-foot) pool also has a separate whirlpool. The adjacent Cabana restaurant is open during the summer months.

### GOLF

#### *New South Wales Golf Club*

The New South Wales Golf Club is the number-one course in Australia. It is surrounded by the Pacific Ocean and Botany Bay. Highlights include English pot-style bunkers and fast-undulating greens. This is a seaside links course.

#### *Moore Park Golf Club*

Moore Park Golf Club is an 18-hole golf course situated approximately 10 minutes from the central business district. This golf club is the closest driving range to the Hotel and offers 3-tiers with 60 covered bays.

### TENNIS

#### *Rushcutters Bay Tennis Centre*

Rushcutters Bay Tennis Centre is located approximately 10 minutes drive from the Hotel. Racquets and balls are available for rent, and tennis lessons are available through prior arrangement with the centre. Fees apply.

#### LOCAL ACTIVITIES

##### *Bondi Beach*

Sydney's famous surfing beach is located 9.6 kilometres (5.7 miles) east of the Hotel, complete with cafés, restaurants and shops.

##### *EastSail Yacht Charters at Rushcutters Bay*

Whether you decide on a private yacht or a group charter, a day of sailing on Sydney Harbour is a great way to see the city and surrounding area. Yacht charters are available for recreation seven days a week, from 10:00 am to 5:00 pm.

##### *Bridge Climb*

Bridge Climb is a three-hour climb to the top of the Harbour Bridge. Established in 1998, the climb has 360-degree views of Sydney Harbour. Bridge climb operates both day and night and is approximately 15 minutes walking distance from the Hotel.

##### *Australian Pacific Touring*

Australian Pacific Touring offers half- or full-day fully escorted tours that are ideal for independent travellers or small groups.

---

## INCENTIVE ACTIVITIES

### Sample itinerary

---

**Day 1**      **Arrival at Hotel** After arrival, take a leisurely city tour to Mrs. Macquarie's Chair, Watsons Bay, the Eastern Suburbs and Bondi Beach.

**Afternoon**

- Lunch at the Waterfront Restaurant on the shores of Sydney Harbour.
- Spend a leisurely afternoon exploring Darling Harbour's many attractions, such as the Chinese Garden of Friendship, Sydney Aquarium and Australian National Maritime Museum.

**Evening** You are invited to welcome cocktails and an Australian-style light buffet dinner at the Hotel.

---

**Day 2**      **Morning** Breakfast at the Hotel before beginning the day's activities.

- Join the Sydney Harbour Treasure Hunt, where teams of six to eight guests, assisted by experienced skippers, race around Sydney Harbour to find the treasure.

**Afternoon**

- Enjoy a harbour-side al fresco lunch at Nick's Bar and Grill.
- Be pampered from head to toe at the Hotel's spa.

**Evening** Dine at Quay Restaurant and enjoy views of Sydney Harbour, Sydney Opera House and Sydney Harbour Bridge.

---

**Day 3**      **Morning** Breakfast at Sydney Opera House, followed by a tour of the venue and other Sydney sites.

- Explore Sydney's beautiful coastline, jagged sandstone cliffs, golden beaches and the beauty of the Australian bush on a Ku-Ring-Gai Walkabout.
- Visit ancient aboriginal sites and engraved rock art.

**Afternoon**

- Lunch at Cottage Point Inn on the Hawkesbury River.
- Board a seaplane at Cottage Point Inn for the scenic flight back to Sydney.

**Evening** Spend "A Night with the Stars," a formal black-tie dinner at Luna Park.

---

**Day 4**      **Morning** Breakfast at the Hotel before beginning the day's activities.

- Take a flight to the Hunter Valley for a winery tour.

**Afternoon**

- Lunch, followed by a visit to Hunter Valley Gardens.

**Evening**

- Be chauffeured in a vintage car on a "Sydney Dine-Around," where you will have dinner at some of Sydney's finest restaurants.
  - Enjoy the private use of Fort Denison, an island in Sydney Harbour. Arrive in a water taxi for a three-course dinner served in a clear-walled marquee, complete with a classical trio and stargazer.
-

Day 5            Morning Breakfast at the Hotel before beginning the day's activities.

- Explore the Hotel's facilities.
- Climb Sydney Harbour Bridge.
- Ride a Harley-Davidson.
- Jet-boating in Sydney Harbour
- Shop around the city.
- Go on a scenic helicopter flight.
- Visit Taronga Zoo.
- Relax at Bondi Beach.

Afternoon

- Enjoy lunch and an afternoon at your leisure.
- Treat yourself to an afternoon of unique rejuvenating experiences at the Hotel's spa, followed by a dip in the outdoor pool.

Evening Join our farewell gala dinner at the Hotel.

---

Day 6            Departure Breakfast at the Hotel before your departure.

---

www.fourseasons.com/sydney

Rooms	Dimensions		Size (m <sup>2</sup> )	(sq ft)	Height		Classroom	Hollow square	U-shape	Theatre	Reception	Banquet rounds	Conference/ boardroom
	(m)	(ft)			(m)	(ft)							
- Grand Ballroom	32.5 x 21	106.6 x 68.9	683	7,352	5.6	18.3	480	180	150	1,000	1,200	550	-
- Ballroom I	16.3 x 21	53.5 x 68.9	334	3,595	5.6	18.3	240	90	70	440	500	270	-
- Ballroom II	16.3 x 21	53.5 x 68.9	334	3,595	5.6	18.3	240	90	70	440	500	270	-
- Ballroom Foyer	-	-	284	3,056	3.2	10.5	-	-	-	-	500	-	-
- Holmes	8.1 x 9.4	26.6 x 30.8	77	829	3.2	10.5	42	32	28	60	60	50	25
- Winten/Teale/Buchanan	10.3 x 21	33.8 x 68.9	216	2,328	2.8	9.2	95	-	-	170	160	140	-
- Winten	10.3 x 6	33.8 x 19.7	62	665	2.8	9.2	36	26	22	60	50	30	24
- Teale	11 x 9	36 x 29.5	99	1,066	2.8	9.2	54	38	-	80	70	60	32
- Buchanan	11 x 6	36 x 19.7	66	710	2.8	9.2	36	26	22	60	50	30	24
- Winten/Teale	10.3 x 15	33.8 x 49.2	154	1,663	2.8	9.2	75	-	-	100	120	90	-
- Teale/Buchanan	11 x 15	36 x 49	165	1,775	2.8	9.2	75	-	-	100	120	80	-
- Tanner	7 x 6.6	23 x 21.7	46.2	497	2.8	9.2	24	18	16	30	30	30	16
- Level 3 Lounge	-	-	-	-	-	-	-	-	-	-	150	70	-
- Business Centre Boardroom	6.3 X 3.9	20.7 X 12.8	31	331	2.3	7.5	-	-	-	-	-	-	10