



## Quick Reference Guide

---

Last updated May 3, 2012 | For additional information please contact the hotel directly

---

Four Seasons Hotel Singapore  
190 Orchard Boulevard, Singapore, 248646, Singapore  
Tel 65.6734.1110 | Fax 65.6733.0682 | Res 65.6831.7305

[www.fourseasons.com/singapore](http://www.fourseasons.com/singapore)



190 Orchard Boulevard  
Singapore 248646, Singapore  
Tel 65.6734.1110  
Fax 65.6733.0682  
Res 65.6831.7305

*Sales office:*  
Tourism Court, 1 Orchard Spring  
Lane #04-01  
247729, Singapore  
Tel 65.6737.3595  
Fax 65.6737.3510

#### AIRPORT

- Singapore Changi International  
Airport (SIN): 25 minutes (22  
kilometres/14 miles)

#### TABLE OF CONTENTS

- 2 *Introduction*
- 4 *Destination*
- 10 *Conference Facilities*
- 18 *Guest rooms, Suites and  
Private Residences*
- 23 *Dining*
- 24 *Recreational Facilities*
- 25 *Incentive Activities*
- 26 *Appendix: Conference Chart*

An oasis of calm nestled within a lush garden setting, Four Seasons is just around the corner from Orchard Road – Singapore’s Fifth Avenue – and minutes from the financial district. Showcasing a collection of 1,500 Asian art pieces, the Hotel exudes the ambience of a grand private residence.



Like a residential club with all the accoutrements, right down to the air-conditioned tennis courts, Four Seasons Hotel Singapore rises above tree-lined Orchard Boulevard in a stunning 20-storey tower. Its central location places you less than a half hour from the airport, a jog away from the Botanic Gardens and a 15-minute drive from the central business district and Marina Bay.

Comfortable, spacious and elegant, the Hotel’s 255 guest rooms include 40 superbly furnished suites. Immersed in the ambience of an intimate retreat, guests can enjoy some of the finest dining in Singapore and a private health club and spa that is second to none.

Complementing these amenities are 1,565 square metres (16,855 square feet) of well-thought-out meeting facilities that adapt to any purpose, from a board meeting of 30 to a gala reception for 500.

#### TRANSPORTATION

Most major airlines service the city through Singapore Changi Airport. They include Air France, Air India, All Nippon Airways, British Airways, Cathay Pacific Airways, Emirates, Garuda Indonesia, Japan Airlines, KLM Royal Dutch Airlines, Korean Airlines, Lufthansa German Airlines, Malaysia Airlines, Northwest Airlines, Philippine Airlines, Qantas Airways, Saudi Arabian Airlines, Qatar Airways, Etihad Airways, Singapore Airlines, Thai Airways International, United Airlines, and Vietnam Airlines.

Several major car rental firms operate at the airport; taxis, buses and limousines are also easily available.

---

---

WEATHER CHART

---

Month	°C		°F	
	Highs/Lows	Highs/Lows	Highs/Lows	Highs/Lows
January	33	/ 23	91	/ 73
February	33	/ 23	91	/ 73
March	33	/ 24	91	/ 75
April	33	/ 24	91	/ 75
May	34	/ 24	93	/ 75
June	34	/ 24	93	/ 75
July	34	/ 24	93	/ 75
August	34	/ 24	93	/ 75
September	34	/ 24	93	/ 75
October	33	/ 24	91	/ 75
November	33	/ 24	91	/ 75
December	33	/ 23	91	/ 73

---

DESTINATION

Singapore is a multicultural and multiracial tropical city, best known for its airport, food and shopping. Modern Singapore also rivals neighbouring Hong Kong as one of Asia's major financial and industrial hubs. Its attractions range from legacies of the island's colonial past to the sophisticated shopping and entertainment of the modern day.

An island surrounded by the South China Sea, the Straits of Malacca and the Straits of Johore, Singapore covers 697 square kilometres (269 square miles), just 137 kilometres (85 miles) north of the equator. Its nearest neighbour is Malaysia; the Indonesian Islands are to the south, Thailand to the north and the Philippines to the northeast.

WEATHER

Singapore's weather is warm and humid all year round.

There is very little fluctuation in temperature, which ranges from 23°C (73°F) to 34°C (93°F). Average relative humidity is 85 - 100%.

LOCAL ATTRACTIONS AND ACTIVITIES

At Four Seasons, you enjoy a unique vantage point from which to explore the sights, sounds and experiences around you. We hope the highlights of local attractions below help simplify your planning. Please let us know how else we can assist you.

*Within a 15-minute walk of the Hotel*

Singapore Botanic Gardens:

- The Singapore Botanic Gardens is a combination of primary jungle and manicured gardens. Spread over 52 hectares (128 acres), the Gardens is home to thousands of species of plant life, including many rare specimens.

National Orchid Garden:

- The National Orchid Garden, located within the Singapore Botanic Gardens, has the world's largest orchid display, featuring over 60,000 plants and orchids. It houses the famed *VIP Orchid*, named after visiting state dignitaries to Singapore.

*Within a 10-minute drive of the Hotel*

Dempsey Hill:

- Dempsey Hill, formerly the British army barracks, is a lifestyle destination presenting a host of retail outlets and eateries in the midst of lush greenery. Browse exquisite furniture, carpets, handcrafted art pieces and more.

*Within a 15-minute drive of the Hotel*

Victoria Concert Hall:

- Singapore's most historical concert venue, Victoria Concert Hall is a grand building named in the memory of Queen Victoria, who passed away in 1901.

Victoria Theatre:

- Originally built as the Town Hall, Victoria Theatre is now a popular venue for the performing arts. Contact the Concierge for a performance schedule.

Jubilee Hall:

- Venue for live theatre. Contact the Concierge for a performance schedule.

Singapore Art Museum:

- The Singapore Art Museum (SAM), one of Singapore's finest colonial structures, was transformed from a 19th-century mission school and now houses the national art collection of Singapore. It has the largest collection of 20th-century Southeast Asian art including more than 4,000 modern and contemporary Southeast Asian paintings and sculptures.

Art Forum:

- Features contemporary brush paintings, sculpture and 3D works and contemporary abstract paintings.

Artfolio:

- Artfolio Gallery is a contemporary gallery representing both local artists and those from throughout Southeast Asia.

Fuk Tak Chi Street Museum:

- Singapore's oldest temple, now restored as a museum to inform and educate visitors about the country's rich heritage. Admission is free.

Singapore Philatelic Museum:

- A treat for both stamp and non-stamp collectors, displaying stamps dating back to 1907.

Esplanade Theatres on the Bay:

- The Esplanade Theatres on the Bay is Singapore's newest and most exciting performance arts complex, located on the waterfront. The centre is comprised of a 1,600-seat Concert Hall, a 2,000-seat Theatre, a Recital Studio, rehearsal studios and outdoor performing spaces. Also on site, the Esplanade Mall offers a diverse retail mix. Meanwhile, art lovers can delight in reading and audiovisual materials in the library at Esplanade, the first themed library covering music, dance, film and theatre, overlooking Marina Bay. The Esplanade offers a variety of performances, from musicals to dance to theatre, with outdoor shows as well as lunchtime concerts.

Holland Village:

- Holland Village, possibly Singapore's most happening suburb, features fast food outlets, coffee houses, arts and antique shops.

Boat Quay and Clarke Quay:

- Boat Quay and Clarke Quay are historical areas of warehouses and shop houses on the banks of the Singapore River. They have been restored and refurbished as restaurants, bars and entertainment centres. Their biggest appeal is al fresco dining along the river's edge.

Chinatown:

- In the bustling Chinatown, visitors will find turn-of-the century shops within modern shopping centres. These shops sell a whole range of items, from wooden Chinese clogs to compact disc players. A walk through Chinatown's numerous alleyways and side-

streets will reveal craftsmen practising age-old arts and customs such as Chinese calligraphy, effigy making, idol carving and joss stick making.

Little India:

- Enjoy spicy aromas from the numerous eateries, strains of sitar music and colourful tradition.

Arab Street:

- Arab Street has been a thriving trading district since the 1800s with traders dealing in coffee, gold dust, spices and pearls. Today, merchants sell Indonesian batiks, Persian rugs, Turkish scents, Indian silks and trinkets and antiques from the Middle East and around the world.

Asian Civilisations Museum:

- The Asian Civilisations Museum at Empress Place occupies over 14,000 square metres (150,700 square feet) and features 11 exhibition galleries, two dining outlets, a museum shop, a fully equipped auditorium and a function room with spectacular views of the Singapore River. The museum is devoted to the rich culture of Chinese beliefs, symbolism, connoisseurs and scholars. It houses the best of Chinese furniture, ceramics, jade and works of art. The museum and educational institute is the largest in Singapore and the region.

The Arts House at The Old Parliament:

- The former Parliament House, built in 1827, is Singapore's oldest government building. It stands on the banks of the Singapore River and is the site where Sir Stamford Raffles first arrived in 1819. Renamed and re-launched The Arts House at The Old Parliament, the building combines the charm of colonial architecture with cutting edge contemporary visual arts, music, dance, film, comedy and theatre by Singaporean and international artists. Nearby you will discover a bronze elephant statue, a gift from King Chulalongkorn of Siam in 1871.

Civilian War Memorial:

- Dedicated to the civilians who died during the Japanese occupation in World War II, the memorial features four tapering white columns reaching 70 metres (225 feet) into the sky, each representing a different ethnic group.

Lau Pa Sat:

- Lau Pa Sat is the largest remaining Victorian filigree cast-iron structure in South-East Asia. Built in 1894, it was previously a wet market but today it offers shopping, food and entertainment.

Sakya Muni Buddha Gaya Temple/Temple of 1,000 Lights:

- Sakya Muni Buddha Gaya Temple or the Temple of 1,000 Lights is one of the most widely visited Buddhist temples in Singapore and houses a 15-metre (49-foot) statue of Buddha.

Singapore Flyer:

- At a height of 165 metres (541 feet), the Singapore Flyer is the world's largest giant observation wheel, offering splendid views of the shimmering Marina Bay waterfront and the historical landmarks that dot the city skyline.

Sultan Mosque:

- The Sultan's Mosque with its massive golden dome and huge prayer hall is one of the city's most imposing religious points for Singaporean Muslims. The mosque was originally built with a grant from Sir Stamford Raffles, the founder of modern Singapore, and was completed in 1928.

Sri Mariamman Temple:

- The Sri Mariamman Temple is Singapore's oldest Hindu temple, dating back to 1827. Intricate and very colourful carvings adorn various parts of this temple.

National Museum of Singapore:

- The National Museum of Singapore is the city's oldest museum – yet its contemporary, innovative take on history redefines the conventional museum experience. It also includes the Singapore History Gallery and the Singapore Living Gallery.

Peranakan Museum:

- The Peranakan Museum houses the finest, most comprehensive collection of Peranakan artefacts and explores the unique culture in the former Straits Settlements of Singapore, Malacca and Penang.

Sands SkyPark:

- The Sands SkyPark, designed by world-renowned architect Moshe Safdie, gives visitors panoramic views of Singapore from one of the world's largest public observation decks. This awe-inspiring building also features rooftop restaurants and the Sands SkyPark infinity pool.

*Within a 20-minute drive of the Hotel*

Singapore Indoor Stadium:

- Venue for indoor tennis, basketball, badminton and concerts. Contact the Concierge for a schedule of events.

Sentosa Island:

- Sentosa Island is Singapore's holiday resort island, where nature, history, recreation and fantasy are set in a fun, entertaining and educational environment. Visitors can enjoy the Butterfly and Insect Kingdom Museum, which is a walk-in aviary with more than 2,500 free-flying butterflies and 4,000 mounted insects. Fort Siloso contains a complex of bunkers, cannons and underground passages - relics from World War II.

Underwater World:

- A 37-m Merlion statue offers a panoramic view of Sentosa and the neighbouring islands. The Underwater World, Asia's most exciting tropical oceanarium, has an 80-m submerged acrylic tunnel which allows visitors to view over 2,500 marine creatures from 250 species. Enjoy the Dolphin Lagoon and come up close to sharks, stingrays, moray eels, stone-fish, turtles and weedy sea dragons.

Universal Studios Singapore:

- The first Universal Studios theme park in Southeast Asia, Universal Studios Singapore, located on Sentosa Island, offers 24 attractions and rides, 18 of which have been

specially adapted for Singapore. The park is home to the world's largest collection of DreamWorks Animation-themed attractions, including attractions based on *Shrek* and *Madagascar*. Experience the world's tallest duelling roller coaster and its *Battlestar Galactica* theme, a familiar-looking castle in the World of Shrek, the acrobatic show *Voyage de la Vie* at the Resorts World Sentosa Complex and *Monster Rock*, a live musical performed by the Universal Monsters. Be sure to keep an eye out for celebrity lookalikes roaming the park!

*Within a 30-minute drive of the Hotel*

Singapore Zoological Gardens:

- The Singapore Zoological Gardens is one of the world's most spectacular zoos. The open-concept zoo uses natural barriers such as streams, rock walls and vegetation to separate animals from visitors. Spread over 28 hectares (69 acres), it is home to 3,200 mammals, birds and reptiles including many rare and endangered species.

Night Safari:

- The Night Safari is the world's first and only night zoo. Featuring over 1,200 animals with over 110 different species in different zones, the park recreates eight geographical regions. Visitors can either take the tram or use one of the three walking trails and stroll through the Mangrove Walk, a free-ranging bat enclosure along the Leopard Trail.

Jurong Bird Park:

- Jurong Birdpark is Southeast Asia's largest bird sanctuary and houses more than 9,000 birds representing 600 species, including the largest hornbill collection in the world. With its landscaped environment and impressive aviaries, this park offers visitors an experience that is both informative and entertaining.

The Changi Museum:

- Changi Prison Chapel and Museum has on record the daily lives of Allied prisoners of war during World War II, displaying photographs, paintings and sketches. It also features a pair of rail spikes from the infamous Burma railroad, which claimed thousands of lives. Next to the museum is a replica of a chapel built by these prisoners and which still stands as a tribute to them and their suffering.

NUS Museum (featuring the Lee Kong Chian Art Museum):

- The museum gives visitors a glimpse at 7,000 years of Chinese civilization and culture. Admission is free.

Mandai Orchid Gardens:

- Mandai Orchid Garden is Singapore's largest commercial orchid garden and is worth a visit for its colourful floral displays and for its demonstration of the method and manner of orchid cultivation. The Orchid Gift Box Service will deliver the elegant flowers to any address in the world.

Kranji War Memorial:

- The tranquil and beautifully landscaped grounds of the Kranji War Memorial are a fitting tribute to the courage of the Allied troops who died in the defence and fall of Singapore during World War II. The names of those who died are inscribed on the

walls, and a register is available from the custodian for viewing.

**Bukit Timah Nature Reserve:**

- Bukit Timah Nature Reserve is one of the only two rainforests in the world within city boundaries (the other is in Rio de Janeiro). The 165-hectare (410-acre) reserve contains more species of plants than the entire North American continent. Take a hike through well-marked paths to see the exotic wildlife including monkeys, butterflies and flying lemurs.

*Within a 45-minute drive of the Hotel*

**Singapore Turf Club:**

- Venue for horse racing in Kranji. A dress code applies.

**Johor Bahru:**

- A bustling city along the Singapore–Malaysia border. Market bazaars and street vendors abound, and the city is a bargain hunter's dream.

CONFERENCE FACILITIES OVERVIEW

Total Space	1,565 m <sup>2</sup> 16,855 sq.ft.
Largest Ballroom	491 m <sup>2</sup> 5,285 sq.ft.
Meet and Feed (max. capacity)	290
Breakouts	5
Banquet (max. capacity)	500
Outdoor Banquet (max. capacity)	50
Private Dining (max. capacity)	15

CONFERENCE FACILITIES

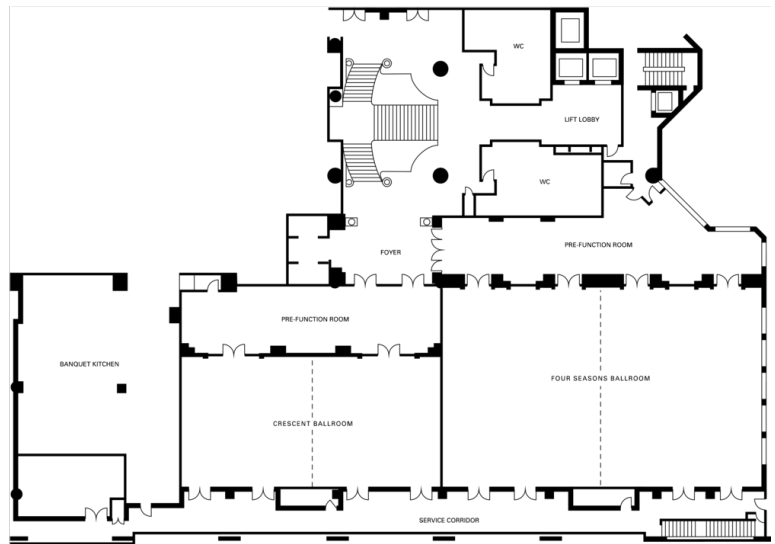
In a city already legendary for service, Four Seasons continually sets the standard. Host your meeting in an intimate oasis of exemplary spaces, complemented by some of Singapore's finest cuisine – in a quiet garden setting off tree-lined Orchard Boulevard.

Four Seasons Hotel Singapore offers over 1,565 square metres (16,855 square feet) of state-of-the-art meeting and function space, to accommodate gatherings of 15 to 500. The unsurpassed selection for a business or social occasion includes two elegant ballrooms, both with spacious foyers, two sophisticated self-contained meeting suites and, on the 20th floor, two city-view function rooms, a private roof garden and a landscaped pool terrace.

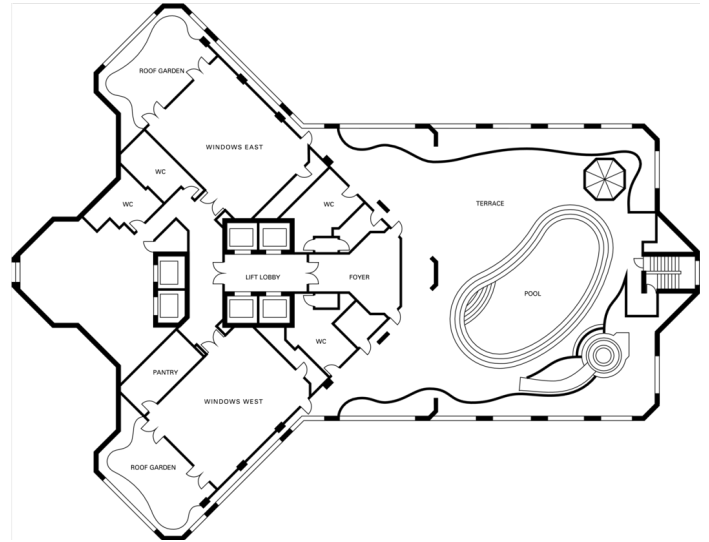
Expect the same fine-dining experience at a function as you would in the Hotel's restaurants, including selections prepared by either or both of the Western and Chinese kitchens.

Dedicated to carrying out, to the tiniest detail, any mood or theme you desire, Four Seasons staff and resources support you at every step for effortless planning and a successful event.

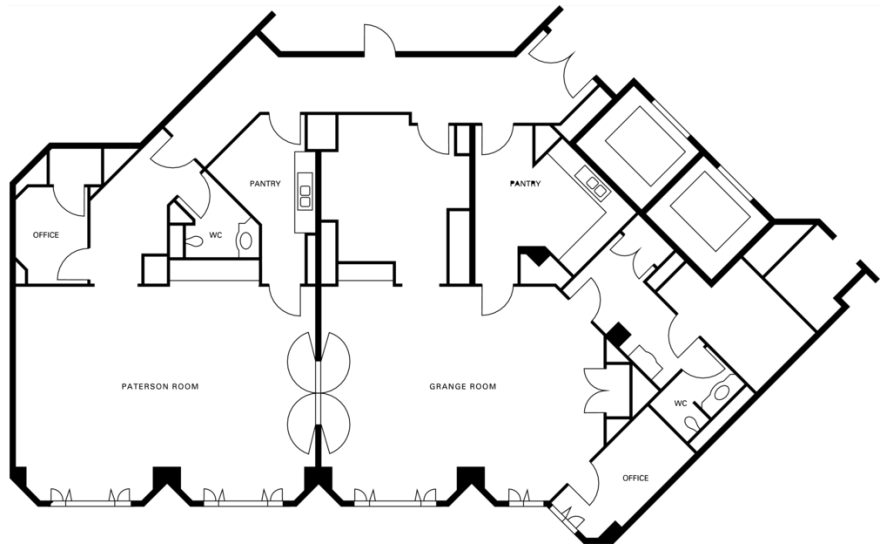
Second floor



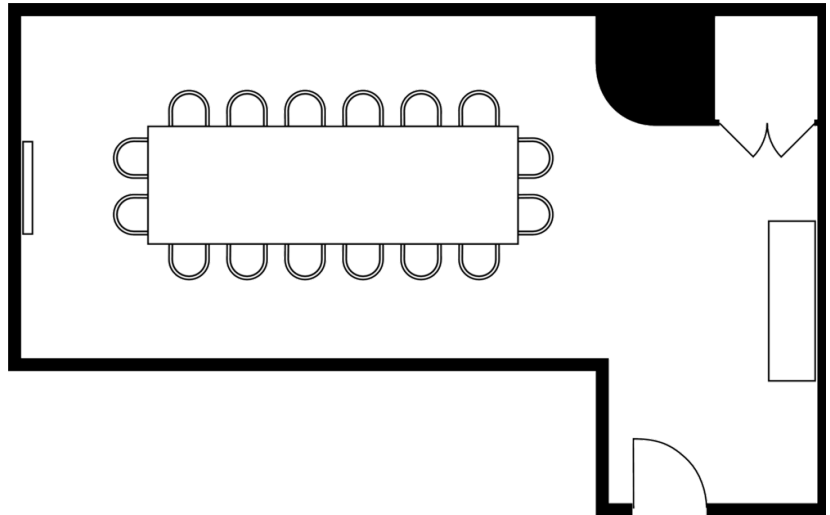
Twentieth floor



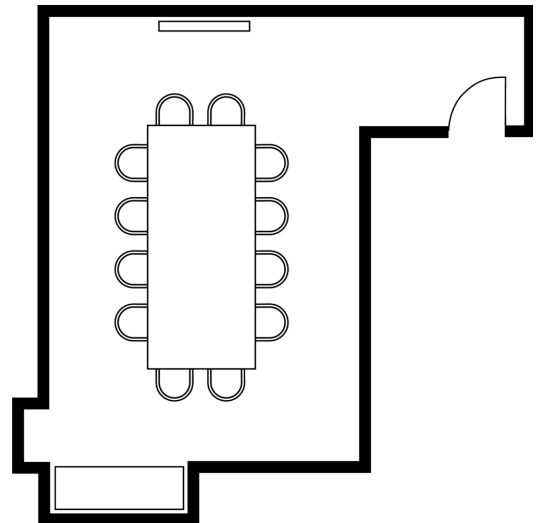
Sixth floor



*Third floor - Temasek I*



*Third Floor - Temasek II*



**TECHNICAL ASSISTANCE**

Full audiovisual support is available, including equipment and technical assistance, to ensure professional, problem-free presentations. Voltage is 220.

State-of-the-art audiovisual equipment includes:

- Projection booths, front and rear
- Video/teleconferencing
- High-speed Internet access
- Dedicated telephone lines available on request
- LCD, slide and overhead projectors
- Mono, stereo and multi-track tape recorders; CD and DVD players
- Video cameras, and video players
- Multi-slide presentation units and programmers
- Personal computers

- Wired or wireless Internet access in meeting rooms

#### MUSIC AND ENTERTAINMENT

Our Conference Services Managers will be happy to assist with setting up any type of music or entertainment for your meeting.

#### RECEIVING AND MAINTENANCE

The Hotel features a full-service shipping and receiving office. All packages should be sent to the attention of a group's name and its Conference Services Manager. They will be stored in a separate conference storage area. Limited space is available for the storage of large items. Please time shipping to the dates of your arrival.

##### *Receiving dock*

Please contact the receiving department or your Conference Services Manager for special arrangement for delivery of oversized packages or environmentally sensitive equipment.

##### *Post-conference shipping*

Shipping of post-conference materials may be co-ordinated through your Conference Services Manager.

##### *Maintenance*

The Engineering Department is available 24 hours a day for general assistance with lighting, room temperature control and minor repairs.

#### SPOUSE PROGRAMMES

The Concierge makes information available on nearby points of interest and on daily tours conducted by the Singapore Tourism Board. Other programmes such as private exercise classes, spa treatments and culinary sessions conducted by the Hotel's chefs may also be arranged.

#### CHILDRENS AND FAMILY PROGRAMMES

Four Seasons Hotel Singapore offers a perfect base for families visiting the area, and extends an especially warm greeting to its young guests by providing a special welcome amenity. A selection of children's DVDs and video games is available. The Cabana swimming pool is located on the 20th floor is a welcoming environment for families. Children's toys are available.

Children's menus are available in the restaurants and through In-Room Dining. Babysitting services may be arranged through the Concierge. They will also advise on off-site activities to create special memories for the entire family.

#### BUSINESS SERVICES

Around the clock, Four Seasons can assist you with business, entertainment or travel arrangements through the Business Center and resourceful, multilingual Concierge.

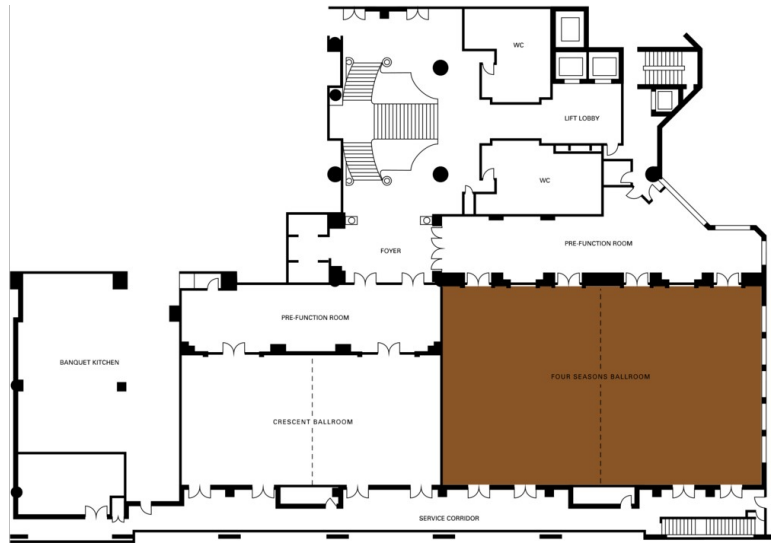
- 24-hour business services
- Audiovisual equipment
- Secretarial service
- Translation and interpretation service
- Wired or wireless Internet access in meeting rooms
- Wired or wireless Internet access

**FOUR SEASONS BALLROOM**

Dimensions	28.3 x 16.5 m 92.8 x 55 ft
Size	491 m <sup>2</sup> 5,285 sq.ft.
Height	4.7 m 15.5 ft

*Capacities*

Classroom	290
Hollow square	114
U Shape	90
Theatre	480
Reception	450
Banquet Rounds	320

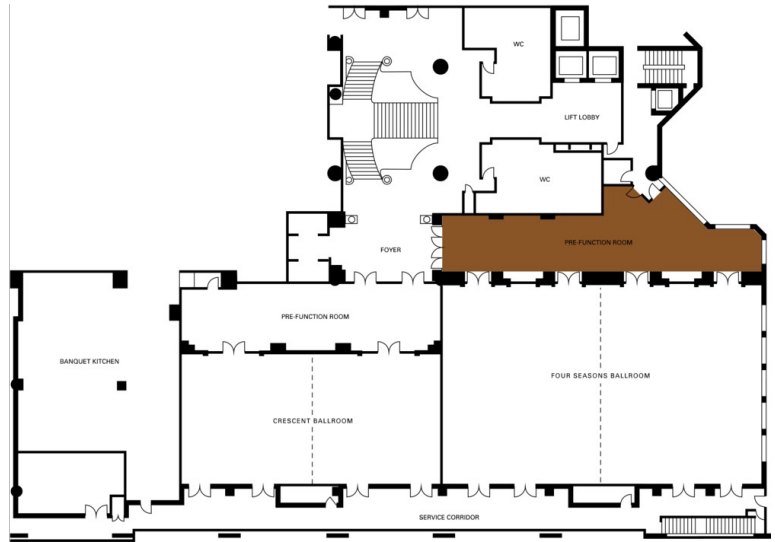


**FOUR SEASONS BALLROOM PRE-FUNCTION ROOM**

Dimensions	27 x 5.6 m 88.6 x 18.3 ft
Size	151 m <sup>2</sup> 1,625 sq.ft.
Height	4 m 13.1 ft

*Capacities*

Reception	170
-----------	-----



**CRESCENT BALLROOM**

Dimensions	21 x 10.4 m 68.9 x 34 ft
Size	246 m <sup>2</sup> 2,648 sq.ft.
Height	4.3 m 14.1 ft

*Capacities*

Classroom	130
Hollow square	72
U Shape	60
Theatre	220
Reception	220
Banquet Rounds	150



CRESCENT BALLROOM PRE-FUNCTION ROOM

Dimensions 21.8 x 5.5 m  
71.5 x 18 ft  
Size 120 m<sup>2</sup>  
1,292 sq.ft.  
Height 5 m  
16.4 ft

Capacities

Reception 120

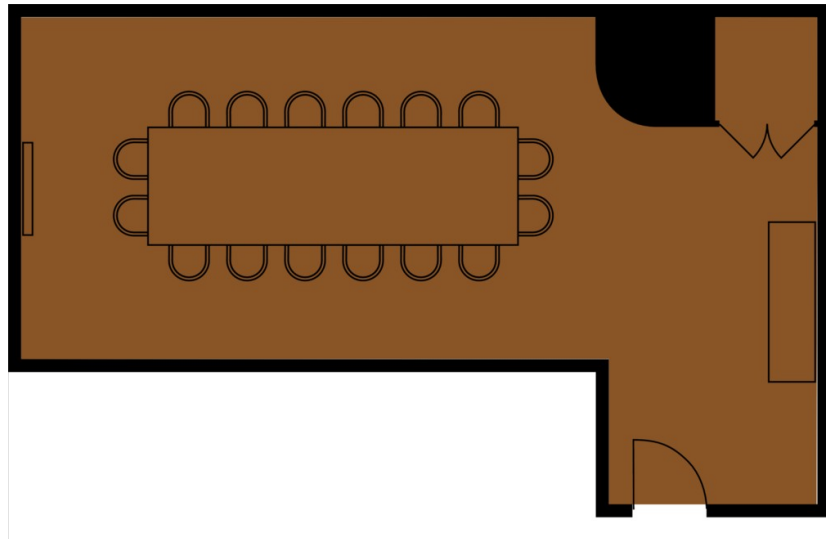


TEMASEK I

Dimensions 10 x 4 m  
33.3 x 13.3 ft  
Size 44 m<sup>2</sup>  
474 sq.ft.  
Height 3.2 m  
10.5 ft

Capacities

Boardroom 16

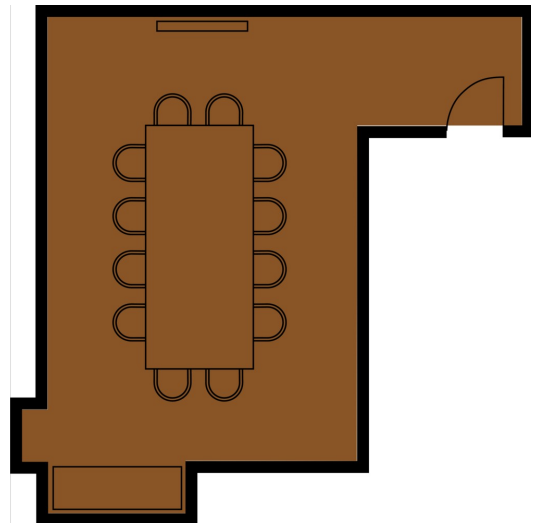


TEMASEK II

Dimensions 6.9 x 4.8 m  
22.7 x 15.8 ft  
Size 40 m<sup>2</sup>  
430 sq.ft.  
Height 3.1 m  
10.2 ft

Capacities

Boardroom 12

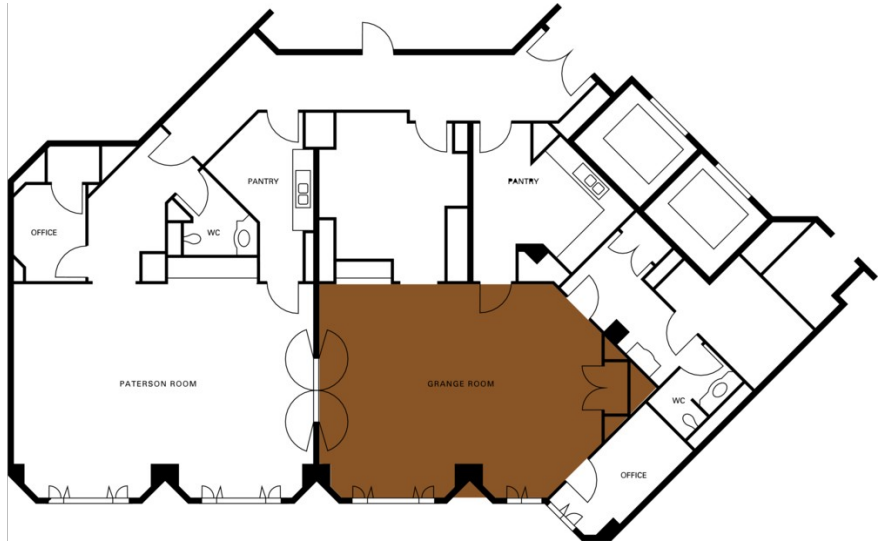


**GRANGE ROOM**

Dimensions 8 x 6 m  
26.2 x 19.7 ft  
Size 63 m<sup>2</sup>  
678 sq.ft.  
Height 2.9 m  
9.4 ft

*Capacities*

Classroom 24  
Hollow square 18  
U Shape 15  
Theatre 30  
Reception 40  
Banquet Rounds 20

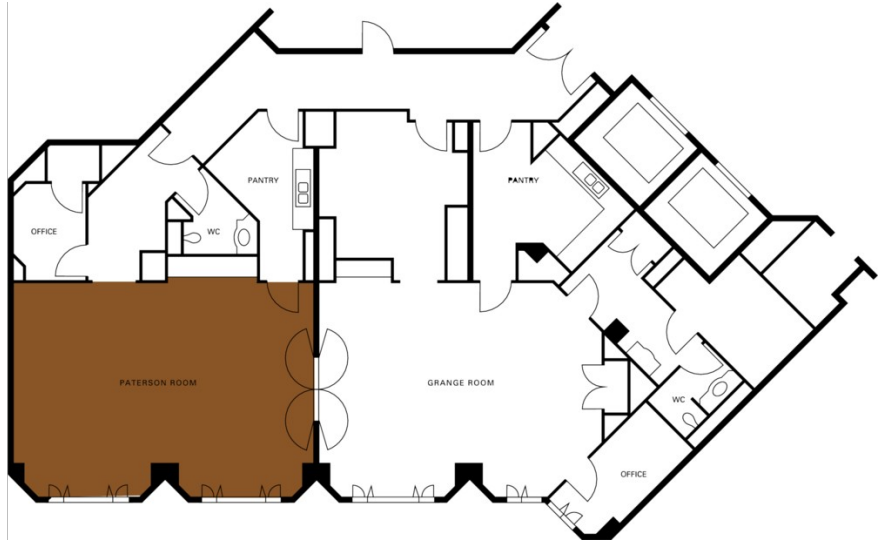


**PATERSON ROOM**

Dimensions 8.5 x 6 m  
27.9 x 19.7 ft  
Size 63 m<sup>2</sup>  
678 sq.ft.  
Height 2.6 m  
8.5 ft

*Capacities*

Classroom 24  
Hollow square 18  
U Shape 15  
Theatre 30  
Reception 40  
Banquet Rounds 20

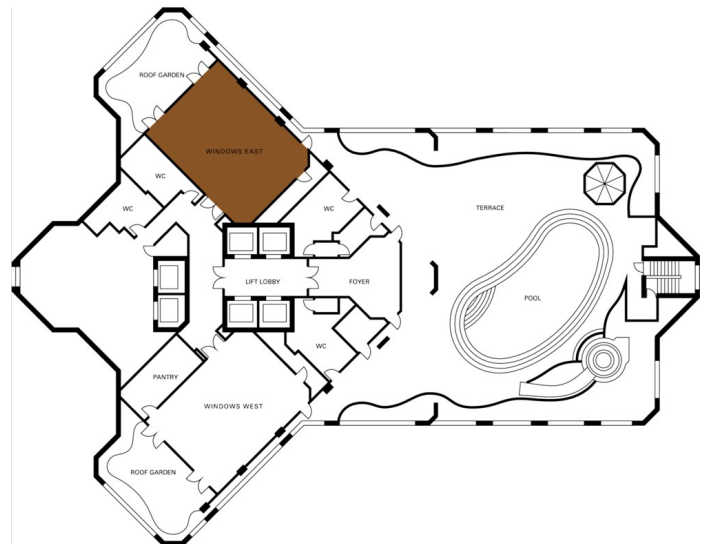


**WINDOWS EAST**

Dimensions 12 x 8.4 m  
39.4 x 27.6 ft  
Size 165 m<sup>2</sup>  
1,776 sq.ft.  
Height 3.5 m  
11.5 ft

*Capacities*

Classroom 50  
U Shape 30  
Theatre 100  
Reception 80  
Banquet Rounds 60  
Boardroom 20

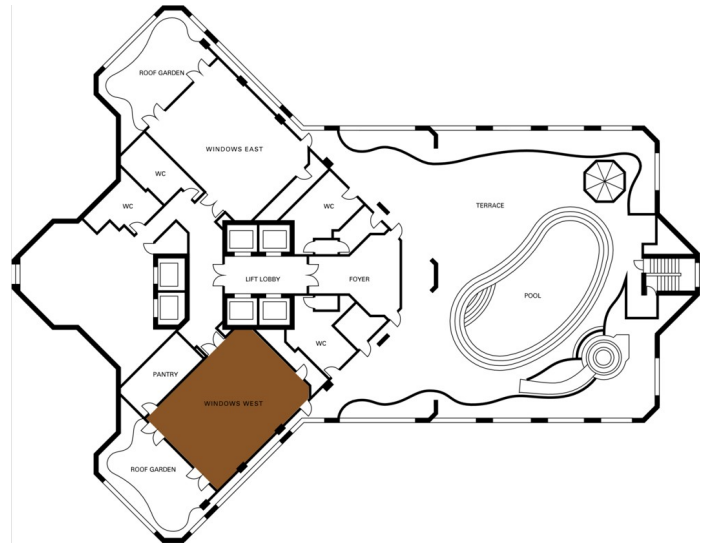


WINDOWS WEST

Dimensions	12 x 8.4 m 39.4 x 27.6 ft
Size	165 m <sup>2</sup> 1,776 sq.ft.
Height	3.3 m 10.8 ft

Capacities

Classroom	50
U Shape	30
Theatre	100
Reception	80
Banquet Rounds	60
Boardroom	20



### GUEST ROOMS, SUITES AND PRIVATE RESIDENCES OVERVIEW

Bright and spacious, with high ceilings and picture windows – accented by our collection of 1,500 original Asian artworks – the 255 guest rooms and suites at Four Seasons Hotel Singapore glow anew, enhanced in every detail.

Textured wall fabrics complemented by furnishings in soothing earth tones and touches of chinoiserie set the mood of contemporary elegance. Behind the scenes, 21st-century technologies, from wireless high-speed Internet access to individually controlled air-conditioning, work tirelessly to ensure comfort and convenience.

The stunning 20-storey building on tree-lined Orchard Boulevard is as ideally situated as ever, a jog away from the Botanic Gardens and a 15-minute drive to the central business district and Marina Bay.

<i>Room Category</i>	<i>#</i>	<i>Beds</i>	<i>Size (m<sup>2</sup>)</i>	<i>View (sq ft)</i>	<i>View</i>
- Four Seasons Executive Suite	26	1 King or 2 twin	75	807	City skyline, greenery or pool
- Premier Room	24	1 King or 2 twin	58	624	City skyline, greenery or pool
- Boulevard Room	41	1 King or 2 twin	49	527	Orchard Boulevard
- Deluxe Room	127	1 King or 2 twin	49	527	City skyline, greenery or pool
- Superior Room	23	1 King	41	441	City skyline, greenery or pool
- Presidential Suite	1	1 King and 2 twin	199	2,142	City skyline and pool
- Royal One-Bedroom Suite	1	1 King	155	1,668	City skyline, greenery or pool
- Ambassador One-Bedroom Suite	1	1 King	162	1,744	City skyline, greenery or pool
- Governor One-Bedroom Suite	1	1 King	162	1,744	City skyline, greenery or pool
- One-Bedroom Suite	10	1 King or 2 twin	91	980	City skyline, greenery or pool
- Four Seasons Executive Suite	2	1 King	75	807	City skyline, greenery or pool
- Premier Room	2	1 King	58	624	City skyline, greenery or pool
- Deluxe Room	14	1 King or 2 twin	49	527	City skyline, greenery or pool

#### *Guest Room Overview*

Superior Rooms, with views from the higher floors, are among the largest of their kind in Singapore, while Deluxe Rooms and Premier Rooms each provide an added measure of space. Four Seasons Executive Suites furnish extra privacy, with a bedroom secluded from the entertainment and work area.

#### *Suites Overview*

One-Bedroom Suites have picture-window views from both the bedroom and the large sitting area. The one-of-a-kind Governor Suite and Ambassador Suite each add to guests' comfort and convenience with an extra-large bathroom and dressing area, as well as a formal area for dining. The warm, contemporary Royal Suite and the Presidential Suite – nearly twice as spacious and situated on the topmost floor – welcome guests to quarters made for gracious entertaining, overlooking the skyline of central Singapore.

**FOUR SEASONS EXECUTIVE SUITE**

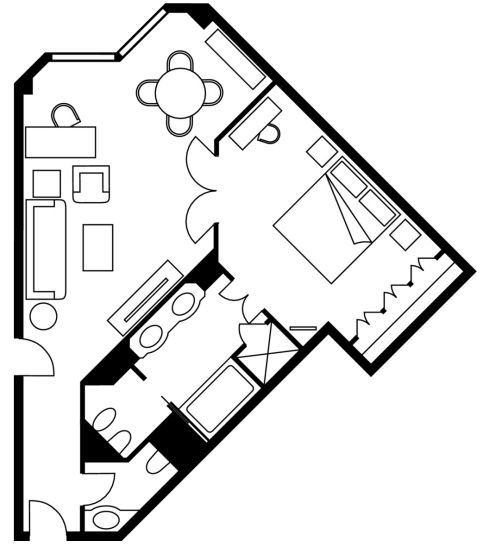
Number 26  
Beds King or two twin beds  
Size 75 m<sup>2</sup>  
807 sq ft

*Location*

6th to 18th floors

*View*

City skyline, greenery or pool



**PREMIER ROOM**

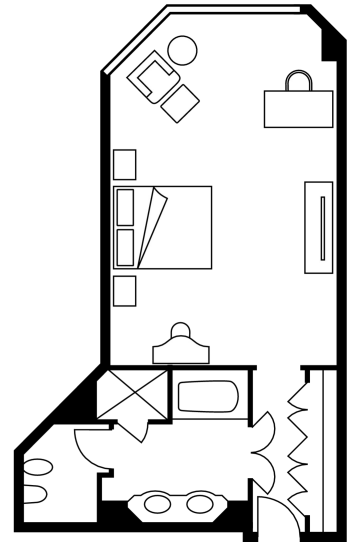
Number 24  
Beds King or two twin beds  
Size 58 m<sup>2</sup>  
624 sq ft

*Location*

6th to 19th floors

*View*

City skyline, greenery or pool



**DELUXE ROOM**

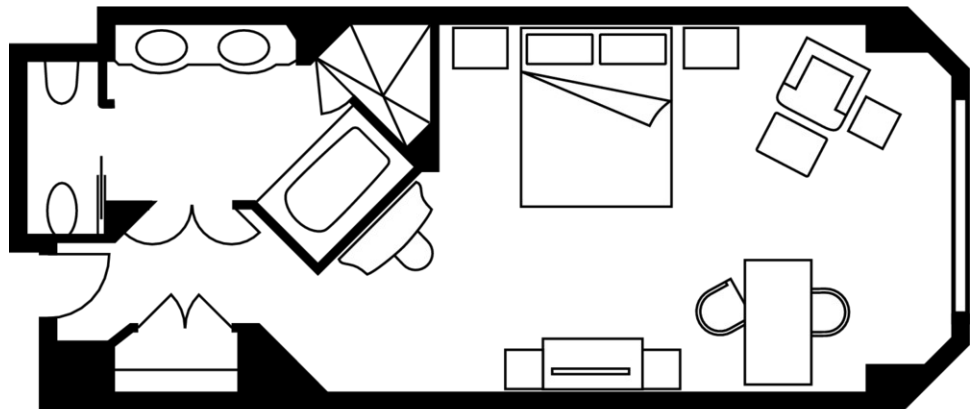
Number 127  
Beds King or two twin beds  
Size 49 m<sup>2</sup>  
527 sq ft

*Location*

6th to 19th floors

*View*

City skyline, greenery or pool



**SUPERIOR ROOM**

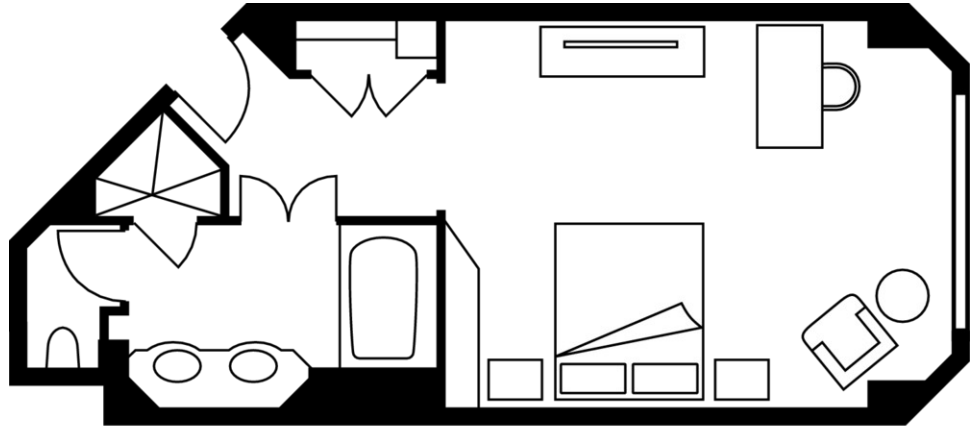
Number 23  
Beds King bed  
Size 41 m<sup>2</sup>  
441 sq ft

*Location*

6th to 19th floors

*View*

City skyline, greenery or pool



**PRESIDENTIAL SUITE**

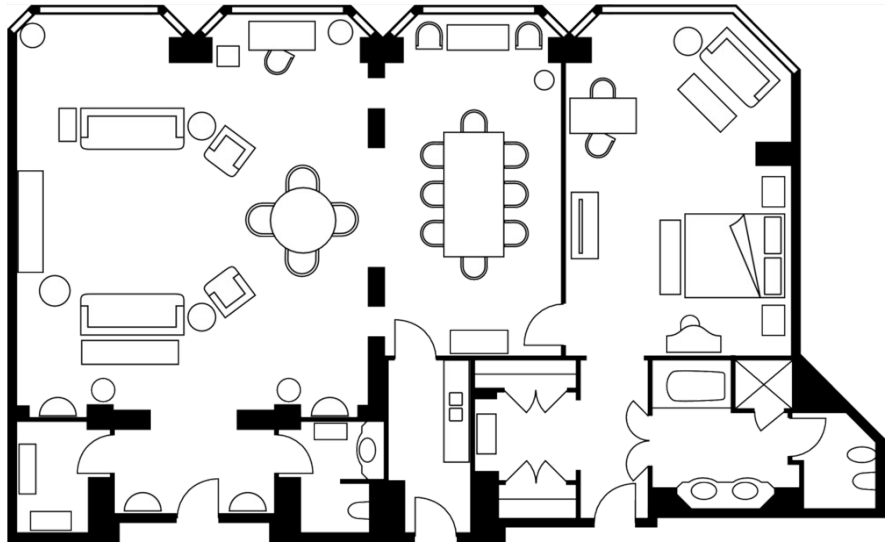
Number 1  
Beds King and two twin beds  
Size 199 m<sup>2</sup>  
2,142 sq ft

*Location*

19th floor

*View*

City skyline and pool



**ROYAL ONE-BEDROOM SUITE**

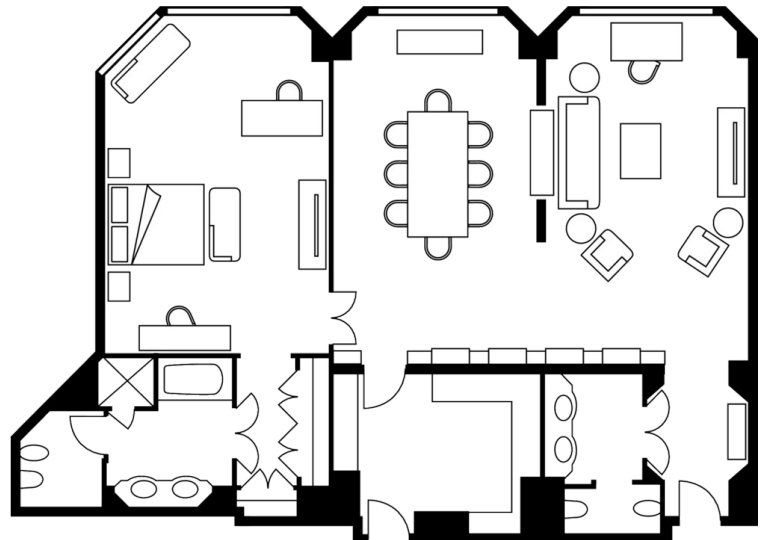
Number 1  
Beds King bed  
Size 155 m<sup>2</sup>  
1,668 sq ft

*Location*

18th floor

*View*

City skyline, greenery or pool



AMBASSADOR ONE-BEDROOM SUITE

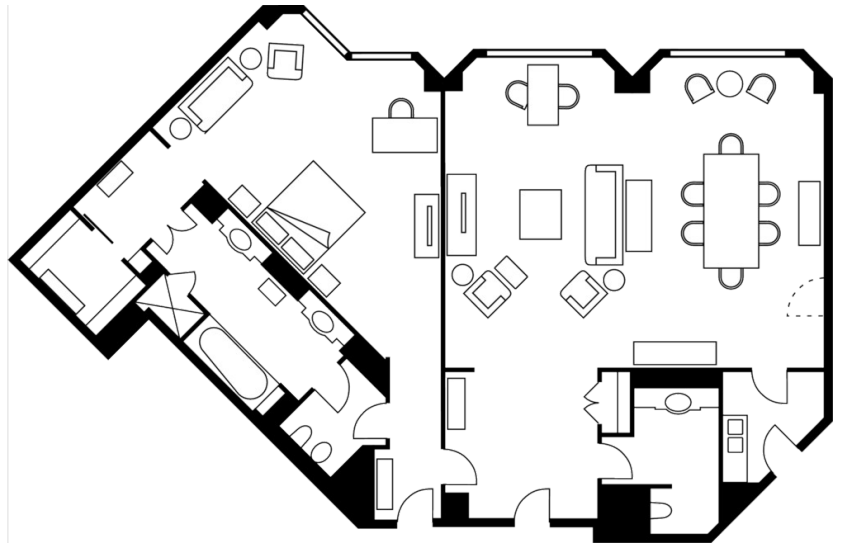
Number 1  
Beds King bed  
Size 162 m<sup>2</sup>  
1,744 sq ft

Location

19th floor

View

City skyline, greenery or pool



GOVERNOR ONE-BEDROOM SUITE

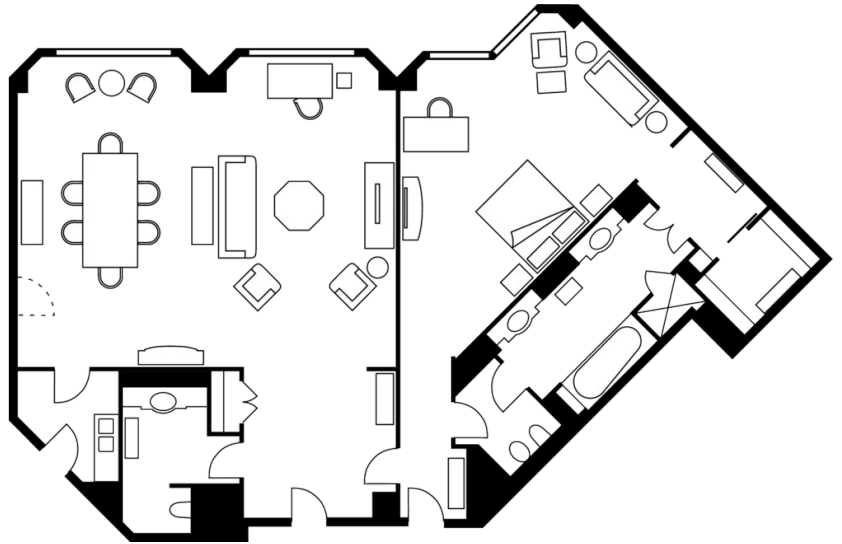
Number 1  
Beds King bed  
Size 162 m<sup>2</sup>  
1,744 sq ft

Location

19th floor

View

City skyline, greenery or pool



ONE-BEDROOM SUITE

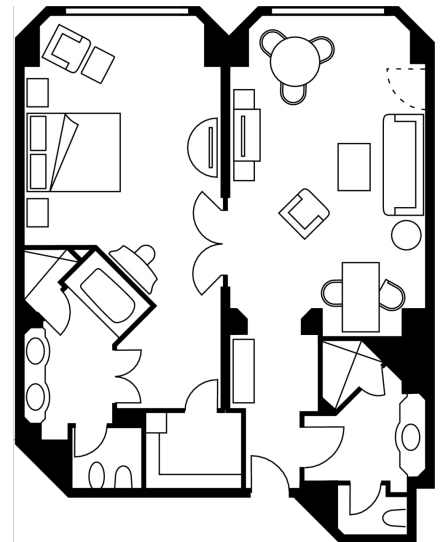
Number 10  
Beds King bed or two twin  
beds  
Size 91 m<sup>2</sup>  
980 sq ft

Location

16th and 18th floors

View

City skyline, greenery or pool



#### AMENITIES

- All news cable network
- CD player
- Clock radio
- Cordless telephone(s)
- Down pillows
- DVD player
- Fax machine on request
- Hair dryer
- In-room safe
- Multi-line telephone(s) with conference call capability
- Multi-line telephone(s) with voicemail
- Refrigerated private bar
- Tea/coffee maker
- Thick terry bathrobes
- Twice-daily housekeeping service
- Wired or wireless Internet access
- Hypo-allergenic pillows on request
- Orthopaedic pillows on request

#### GUEST SERVICES

- 24-hour In-Room Dining
- 24-hour laundry/dry-cleaning/pressing
- 24-hour multilingual Concierge
- Airport transfers
- Complimentary overnight shoeshine
- Non-smoking rooms
- One-hour pressing
- Private dining room
- Restaurant
- Self-parking
- Services and amenities for younger guests
- Umbrellas
- Valet parking

#### VIP GIFTS AND WELCOME AMENITY

Special arrangements can be made for clients to purchase welcome amenities or floral arrangements for their important guests.

---

## DINING HOURS OF OPERATION

---

### *One-Ninety*

#### *Breakfast*

Every day 6:30 am - 10:30 am

#### *Lunch (à la carte menu)*

Every day noon - 3:00 pm

#### *Dinner*

Every day 6:00 pm - 10:30 pm

#### *Brunch*

Sunday noon - 3:00 pm

#### *Buffet lunch*

Monday to Friday noon - 2:30 pm

#### *High tea*

Saturday noon - 3:00 pm

---

### *Jiang-Nan Chun*

#### *Lunch*

Every day 11:30 am - 2:30 pm

#### *Dinner*

Every day 6:00 pm - 10:30 pm

#### *Weekend brunch*

Sunday (first seating) 11:00 am - 1:00 pm

Sunday (second seating) 1:30 pm - 3:00 pm

#### *Saturday*

11:30 am - 2:30 pm

---

### *The Bar and Alfresco*

Every day 8:00 am - 1:00 am

#### *Breakfast*

Every day 8:00 am - 10:00 am

#### *Lunch*

Monday to Saturday noon - 5:00 pm

#### *Afternoon tea*

Monday to Saturday 2:00 pm - 5:00 pm

---

### *In-Room Dining*

Breakfast 6:00 am - 11:30 am

All-day dining 11:30 am - 11:30 pm

Overnight dining 11:30 pm - 6:00 am

---

## DINING

Meals at Four Seasons temptingly blend the familiar and the extraordinary, whether through authentic yet innovative Cantonese fine cuisine or eclectic international dining, a high-tea buffet or cocktails on the terrace overlooking Orchard Boulevard.

## RESTAURANTS

### *One-Ninety*

One-Ninety is a bistro grill, specialising in the freshest products fired on an applewood grill. The bistro offers a selection of local and international all-time favourites, and at lunch diners on the go can choose items from an appetiser and dessert buffet.

International and Singaporean specialties such as spicy laksa, fragrant chicken rice and comforting noodles are available all day. Breakfast features a buffet of Asian and Western classics. From Monday to Friday, an appetiser and dessert buffet is offered, with the option to choose a main course from an à la carte menu that includes a selection of salads, sandwiches, pasta and apple-wood-grilled meats and fish as well as local dishes. On Saturday, enjoy sweet and savoury snacks at the high tea buffet. Sunday brunch offers an opportunity to relax and enjoy a feast for the senses – featuring an extensive selection of appetisers as well as buffet stations serving Asian and international delights – served with a free flow of champagne or non-alcoholic beverages.

- Cuisine: International and Singaporean
- Indoor seating: 109

### *Jiang-Nan Chun*

Jiang-Nan Chun, the Hotel's Chinese restaurant, offers fine Cantonese cuisine. The restaurant's name translates as "South of the Yang Zi River during springtime," evoking images of a revered place where emperors and wealthy aristocrats read poetry while dining on the banks of the river. Jiang-Nan Chun's refreshing Art Deco look and Art Nouveau furnishings reflect the splendour and distinction of this inspirational name, as do the luxurious linen, fine bone china, crystal ware and silver cutlery.

With seating for 88 guests, the restaurant also has three private dining rooms. Hangzhou, Suzhou and Yangzhou, named after famous cities in China, seat 14, 10 and 6 guests respectively.

- Cuisine: Cantonese
- Indoor seating: 88

## LOUNGES

### *The Bar and Alfresco*

With both indoor and alfresco dining, The Bar area has a comfortable, club-like atmosphere, with deep sofas and leather armchairs. The cosy ambience is perfect for light snacks, afternoon tea or evening cocktails. The outdoor terrace is surrounded by tropical gardens, cooled by overhead fans, and features a tranquil view of tree-lined Orchard Boulevard, one of the world's great thoroughfares. Breakfast and lunch are also served daily.

- Indoor seating: 48
- Outdoor seating: 47 alfresco

## RECREATION FACILITIES

The Club at Four Seasons, exclusively for private members and hotel guests, features an extensive health club and spa, tennis courts and two swimming pools – including a landscaped rooftop pool at the top of the Hotel tower. Golf is minutes away and can be arranged with the helpful assistance of the multilingual Concierge, as can any other off-site activity you desire.

### SPA SERVICES

Enjoy an exceptional experience for the mind, body and spirit. The Spa, located in the Club at Four Seasons, offers a selection of life-enhancing skin and body therapies including aromatherapy, Asian-influenced treatments, massages, reflexology, and facial and beauty treatments.

- Number of treatment rooms: 5

### FITNESS FACILITIES

The Club at Four Seasons is a cosmopolitan city club offering comprehensive health, fitness and recreational facilities. This state-of-the-art fitness centre is designed to be both tranquil and revitalising. The Club features a gymnasium with cardiovascular equipment furnished with individual audiovisual monitors and headsets, as well as an extensive range of weight-training machines and free weights. The aerobics studio is fitted with a wooden sprung floor.

- Size: 6,000 m<sup>2</sup> / 64,620 sq ft

### POOLS

#### *Lap pool*

Set against tropical flora, the lap pool provides a welcome escape from the fast-paced city. Located on the third floor, it is surrounded by a spacious deck with an adjacent outdoor whirlpool. The pool is part of The Club's full-service fitness facilities and spa.

#### *Family pool*

Located on the 20th floor, this free-form pool is surrounded by a landscaped sunning terrace and features a panoramic view of the skyline.

### TENNIS

The Club at Four Seasons includes four tennis courts, two indoor and air-conditioned and two flood-lit for night play. An auto-retrieval ball machine is available in the indoor courts.

### GOLF

#### *Laguna National Golf and Country Club*

Laguna National Golf and Country Club is one of the premier golf clubs in Singapore. It has two championship courses: an 18-hole par-72 course that was built in old Scottish style, and an 18-hole course that was built in classic American style.

#### *Sentosa Golf Club*

This club offers two full 18-hole courses with a golfers' terrace that features dining facilities.

---

## INCENTIVE ACTIVITIES

### Sample itinerary

---

Day 1	<p>Arrival at Hotel After check-in at the Hotel, relax and unwind.</p> <p>Evening</p> <ul style="list-style-type: none"><li>• Cruise in an authentic river bumboat and stroll along the waterfront promenade to Asian Civilisations Museum for dinner.</li><li>• Visit Boat Quay or Clarke Quay after dinner.</li></ul>
Day 2	<p>Morning Breakfast at the Singapore Zoo's Pavilion-by-the-Lake.</p> <ul style="list-style-type: none"><li>• Tour the city's attractions - Little India, Arab Street and Chinatown (featuring turn-of-the-century architecture and shopping bargains).</li></ul> <p>Afternoon</p> <ul style="list-style-type: none"><li>• For lunch, choose any of the Hotel's themed events, including the "Streets of Singapore" buffet.</li><li>• Spend an afternoon of health and wellness - Book a session with our resident coach at the Hotel's two air-conditioned tennis courts, a pilates or yoga session, or enjoy a pampering spa treatment.</li><li>• Visit Jurong Bird Park, Asia's largest bird sanctuary.</li></ul> <p>Evening</p> <ul style="list-style-type: none"><li>• Ride a trishaw from the Hotel to Singapore Botanic Gardens.</li><li>• Sip cocktails and dine outdoors at Burkill Hall, an 1886 British colonial bungalow located in the National Orchid Garden.</li></ul>
Day 3	<p>Morning Breakfast at your leisure before beginning the day's activities.</p> <ul style="list-style-type: none"><li>• Spend a day on Sentosa Island - visit Underwater World, Dolphin Lagoon, Butterfly Park (with 1,500 live butterflies), Insect Kingdom (with 3,000 species of rare insects) and Fort Siloso (a historical landmark of Singapore's colonial past).</li></ul> <p>Afternoon</p> <ul style="list-style-type: none"><li>• Lunch on one of the island's three beaches.</li><li>• Gather for group team-building activities on the beach.</li></ul> <p>Evening</p> <ul style="list-style-type: none"><li>• Savour cocktails and dinner at Chijmes, a beautifully restored cloistered convent and chapel.</li><li>• Tour Night Safari.</li></ul>
Day 4	<p>Morning Breakfast at your leisure.</p> <ul style="list-style-type: none"><li>• Play a round of golf before your departure.</li></ul>

---

www.fourseasons.com/singapore

Rooms	Dimensions		Size (m <sup>2</sup> )	(sq ft)	Height		Classroom	Hollow square	U-shape	Theatre	Reception	Banquet rounds	Conference/ boardroom
	(m)	(ft)			(m)	(ft)							
- Four Seasons Ballroom	28.3 x 16.5	92.8 x 55	491	5,285	4.7	15.5	290	114	90	480	450	320	70
- Four Seasons Ballroom Pre-Function Room	27 x 5.6	88.6 x 18.3	151	1,625	4	13.1	-	-	-	-	170	-	-
- Crescent Ballroom	21 x 10.4	68.9 x 34	246	2,648	4.3	14.1	130	72	60	220	220	150	50
- Crescent Ballroom Pre-function Room	21.8 x 5.5	71.5 x 18	120	1,292	5	16.4	-	-	-	-	120	-	-
- Temasek I	10 x 4	33.3 x 13.3	44	474	3.2	10.5	-	-	-	-	-	-	16
- Temasek II	6.9 x 4.8	22.7 x 15.8	40	430	3.1	10.2	-	-	-	-	-	-	12
- Grange Room	8 x 6	26.2 x 19.7	63	678	2.9	9.4	24	18	15	30	40	20	18
- Paterson Room	8.5 x 6	27.9 x 19.7	63	678	2.6	8.5	24	18	15	30	40	20	18
- Windows East	12 x 8.4	39.4 x 27.6	165	1,776	3.5	11.5	50	-	30	100	80	60	20
- Windows West	12 x 8.4	39.4 x 27.6	165	1,776	3.3	10.8	50	-	30	100	80	60	20