



FOUR SEASONS HOTEL
Silicon Valley at East Palo Alto

Quick Reference Guide

Last updated May 3, 2012 | For additional information please contact the hotel directly

Four Seasons Hotel Silicon Valley
2050 University Avenue, East Palo Alto, California, 94303, U.S.A.
Tel 1.650.566.1200 | Fax 1.650.566.1221

www.fourseasons.com/siliconvalley



FOUR SEASONS HOTEL
Silicon Valley at East Palo Alto



2050 University Avenue
East Palo Alto, California 94303,
U.S.A.
Tel 1.650.566.1200
Fax 1.650.566.1221

AIRPORTS

- San Francisco International Airport (SFO): 25 minutes (19 miles/30 kilometres)
- Mineta San José International Airport (SJC): 16 minutes (15 miles/24 kilometres)
- From Oakland International Airport (OAK) : 35 minutes (28 miles/45 kilometers)

TABLE OF CONTENTS

- 2 *Introduction*
- 4 *Destination*
- 11 *Conference Facilities*
- 19 *Guest rooms, Suites and Private Residences*
- 24 *Dining*
- 25 *Recreational Facilities*
- 29 *Incentive Activities*
- 32 *Appendix: Conference Chart*

Four Seasons brings the high-touch appeal of its legendary service and luxury to the innovative capital of high tech. In the hub of Silicon Valley, 10 minutes from Stanford University, this intimate hotel is the centrepiece of the University Circle complex.



Four Seasons Hotel Silicon Valley at East Palo Alto welcomes you to the area's finest accommodations: 200 guest rooms, including 27 suites, all of which harmonise relaxed California style with high-tech edge.

Situated at the gateway to Palo Alto's most exclusive residential area, the Hotel is a 40-minute drive from downtown San Francisco, 20 minutes from San Francisco International Airport and only 20 minutes from San José.

Dine on the large outdoor terrace or in the art-filled interiors of Quattro, the distinctive all-day restaurant. In the restaurant and throughout the Hotel, an exciting collection of original contemporary artwork creates a gallery-like ambience.

The amenities at Four Seasons combine to create a chic urban getaway. Choose from the array of massages and treatments at the spa and take time for a workout or relaxing steam in the health club. This experience is complemented by an incomparable rooftop

swimming pool and whirlpool set in a pool deck dotted with shaded lounge seating.

For business and social gatherings, Four Seasons offers 7,050-square-foot (655-square-metres) of highly advanced function space, including an elegant ballroom – designed to be Palo Alto’s event destination of choice.

TRANSPORTATION

Three airports service the Palo Alto, CA area:

The San Francisco International Airport (SFO) is 19 miles (30 kilometres) from the Hotel, and handles all major national and international airlines.

The Mineta San José International Airport (SJC) services all national and international airlines and is 15 miles (24 kilometres) south of Palo Alto.

The Oakland International Airport (OAK) services all major national and international airlines. It is 28 miles (45 kilometres) northeast of Palo Alto.

WEATHER CHART

Month	°F		°C	
	Highs	Lows	Highs	Lows
January	58	/ 39	14	/ 4
February	62	/ 43	17	/ 6
March	64	/ 46	18	/ 8
April	69	/ 46	21	/ 8
May	73	/ 51	23	/ 11
June	77	/ 55	25	/ 13
July	79	/ 57	26	/ 14
August	79	/ 57	26	/ 14
September	78	/ 55	26	/ 13
October	73	/ 50	23	/ 10
November	64	/ 44	18	/ 7
December	58	/ 39	14	/ 4

DESTINATION

Home to many of the world's leaders in high-tech innovation and biotech research, Palo Alto is the epicentre of Silicon Valley. Based around Stanford University, this bustling city combines small-town charm with sophisticated elegance. Tree-lined streets and historic buildings reflect Palo Alto's California heritage, while a vibrant downtown core anchors its business and residential areas. This dynamic mix of tradition and innovation makes Palo Alto an extraordinary place in which to do business.

A landmark Palo Alto and Silicon Valley travel destination, Four Seasons Hotel Silicon Valley at East Palo Alto offers easy access to Bay Area business centres and to some of the most scenic stretches of the California coast.

WEATHER

Palo Alto enjoys warm temperatures and a moderate climate year round. The summer season is dry; rain falls mainly in the winter months.

LOCAL ATTRACTIONS AND ACTIVITIES

At Four Seasons Hotel Silicon Valley at East Palo Alto, you enjoy a unique vantage point from which to explore the sights, sounds and experiences around you. Begin with a tour of the art collection in the Hotel, then explore the city, visit a local museum or winery, or simply enjoy a walk on the beach. We hope the highlights of Palo Alto attractions below help streamline your planning. Please let us know how else we can assist you.

Onsite

Art Collection in the Hotel:

- Four Seasons Hotel Silicon Valley at East Palo Alto boasts an extensive art collection that brings together a rich collection of modern and contemporary art and artefacts. Much of the collection is on view in the public areas of the Hotel.

The Hotel has created a podcast highlighting the art in the collection. Listen to interviews with some of the artists, and commentaries from other art experts with special knowledge of the collection. This podcast is available from the Concierge.

Within a 5-minute drive of the Hotel

Palo Alto Junior Museum and Zoo:

- The Palo Alto Junior Museum and Zoo is a place where kids can think, create and play. Check out our engaging exhibits - Color and Light, in the main exhibit hall, is the newest. See our two new baby swell sharks and two leopard sharks, making their home in a new 500-gallon (1,892-litre) saltwater tank, and visit the Museum and Zoo's other fish from the Bay and open ocean.

TheatreWorks:

- TheatreWorks presents outstanding regional theatre and has a national reputation for artistic innovation and integrity.

Computer History Museum:

- The world's largest museum for preserving and presenting the revolutionary history of computing and its impact on the human experience. Discover how computing changed

the way we work, live and play.

Elizabeth Gamble Garden :

- Elizabeth Gamble Garden showcases gardens and a 1902 Georgian Revival house on a 2.3-acre (0.9 hectare) estate. It was built for Edwin Percy Gamble, son of the founder of Procter & Gamble, and is now run as a non-profit community horticultural foundation. Visitors can enjoy the historic home, carriage house, tea house and formal and demonstration gardens. Admission is free, with self-guided tours.

CuriOdyssey at Coyote Point:

- The CuriOdyssey at Coyote Point depicts the natural history of California through engaging and educational experiences, and strives to demonstrate the importance of conservation. Guests can enjoy wildlife habitat gardens, a butterfly garden, displays of plants and animals in their natural setting and programmes that relate to the global environment.

Lyons Limited Antique Prints :

- One of the oldest and largest companies in the United States dealing with fine period graphics, Lyons specialises in etchings, engravings and lithographs dating from 1490 to 1920.

Bryant Street Gallery:

- The gallery's intimate space displays works of contemporary art by emerging and renowned visual artists from across the United States. Fine arts represented include paintings, sculpture, collage, mixed media, etchings and monotypes. Styles range from portrait and abstract art to photorealism and contemporary landscapes.

Voshan Fine Arts Gallery:

- Voshan offers a variety of artwork from a rapidly growing network of artists. The gallery specialises in matching artwork to client needs.

Within a 10-minute drive of the Hotel

Mountain View Center for the Performing Arts:

- Mountain View Center for the Performing Arts hosts a comprehensive performing arts programme to celebrate the arts.

Sunset Magazine Headquarters:

- There is always something to see in Sunset's garden. The flower beds are re-planted at least three times a year, and there are more than 300 kinds of shrubs, trees, vines, ground covers, annuals and perennials in the garden at any given time. The gardens are normally open for self-guided walking tours.

Shoreline Amphitheatre:

- One of the top outdoor concert facilities in the country.

Stanford University Tour:

- Free one-hour campus walking tours are led by student guides who are well versed in the university's history. Tours include the main quad, Memorial Church, science and engineering buildings, White Plaza, Stanford bookstore and libraries. Tours depart

from Visitor Information Services, located in Memorial Auditorium, and are offered every day throughout the year. Parties of 10 or more must book a private tour. Direct e-mail inquiries to visitorinfo@stanford.edu.

Stanford Shopping Center:

- The San Francisco Bay Area's premier shopping and dining experience features Neiman Marcus, Bloomingdale's, Nordstrom, Macy's and Macy's Men's Store, plus 140 other world-class stores, restaurants and services. One of the few open-air shopping centres in the United States, Stanford Shopping Center features spectacular, award-winning gardens, and sculptures by California artists.

Allied Arts Guild:

- One of the best-kept secrets in Palo Alto, the newly renovated Allied Arts Guild features Spanish Colonial-style buildings that play host to a number of art studios and gift shops, in a garden setting of fountains and flower-lined walkways. Browse the Guild's unique shops for a wide array of gift items including china, picture frames, lamps, candy, teas, fine hats, jewellery and art.

Within a 15-minute drive of the Hotel

American Musical Theatre of San José:

- The American Musical Theatre of San José is committed to presenting, preserving, producing and promoting professional musical theatre of the highest calibre.

Stanford Linear Accelerator Center (S.L.A.C.):

- Since its founding in 1962, S.L.A.C. has helped yield key discoveries in elementary particle physics, a field of study that provides insight into the fundamental composition of matter. Tours are available to everyone 12 and older, last about two hours and generally include an overview of particle physics research, a view of the giant detectors required to observe subatomic particles and a stroll down Klystron Gallery, the world's longest building. Advance reservations are required to join a tour.

DesignCON:

- DesignCON is an educational conference and technology exhibition for practising engineers in the fields of semiconductor and electronic design. It attracts 7,000 attendees to the Santa Clara Convention Center in February.

Cantor Arts Center at Stanford University:

- The Center houses a diverse collection of some 25,000 objects, ranging from 4,000-year-old antiquities to works from the modern era. Included is the largest collection of Rodin bronzes outside of Paris. The artworks are exhibited in 24 galleries as well as in sculpture gardens, terraces and courtyards. Nearly 100 contemporary sculptures are showcased outdoors throughout the campus.

Paramount's Great America :

- Paramount's Great America has the most rides in Northern California - everything from roller coasters to water rides. And it's the only place in the Bay Area where kids can meet and play with their favourite Nickelodeon friends.

Within a 20-minute drive of the Hotel

Glenoaks Equestrian Center:

- Glenoaks provides individual equestrian training programs for all levels, from beginners to Grand Prix, and for all ages - children, juniors and adults. The Center is located a short drive from the Hotel. Please contact our Concierge for assistance with lessons and appointments.

Children's Discovery Museum of San José:

- The Children's Discovery Museum of San José is a centre for learning and discovery. It offers interactive exhibits and programmes for children in a warm and inviting setting. As a centre for creative play and expression, the museum provides opportunities for all of us to discover the world through the eyes of our children.

Santana Row:

- A vibrant and diverse mix of shopping, dining and entertainment, with a combination of boutiques, national and regional stores and wonderful local restaurants. Santana Row offers Gucci and Escada alongside antique stores, art dealers, small coffee shops, independent restaurants and gift shops.

Westfield Shoppingtown – Valley Fair:

- Features a 225,000-square-foot (20,900-square-metre) Nordstrom store, a Macy's and a Macy's Men's Store, as well as many other world-class retailers.

Filoli Estates:

- A property of the National Trust for Historic Preservation, this 43-room mansion and exquisite gardens are set on a 654-acre (265-hectare) estate. Filoli reflects the opulent lifestyle enjoyed by prominent San Franciscans Mr. and Mrs. William B. Bourn II during the early 20th century. The mansion was built between 1916 and 1919 and is a definitive example of country home architecture. The 16 acres (6.5 hectares) of formal gardens are designed as a sequence of rooms and feature a collection of more than 500 varieties of roses. Filoli was once used as the set of the TV series *Dynasty*. Admission includes self-guided tours, guided tours and nature hikes.

Within a 25-minute drive of the Hotel

Monster Park:

- Home to the San Francisco 49ers football team.

Photonics West:

- North America's largest commercial exhibition of light-powered technologies, including optics, lasers, biomedical optics, optoelectronic components and imaging technologies. No other event covers the full range of applications and technologies. Photonics West attracts 800 exhibitors and 13,000 attendees to the San José Convention Center in January.

The Tech Museum of Innovation:

- The Tech focuses on how technology works and how it is changing every aspect of the way we work, live, play and learn. The museum's main focus is people and technology.

HP Pavilion:

- Northern California's premier sports and entertainment venue, HP Pavilion is home to the San José Sharks hockey team.

SEMICON West:

- SEMICON West is the premier venue for reaching the global semiconductor and flat panel display industries. Each event delivers the latest and most extensive information available. Over 1,500 exhibitors and 15,000 attendees gather in July at the Moscone Center, San Francisco.

Antiques Row – Antiques Village:

- A concentration of more than 20 antique shops lining 15 blocks, offering everything from ornate Victorian furniture to 1970s pop-culture relics.

Montalvo Arts Center:

- A non-profit organisation, Montalvo occupies a Mediterranean-style villa set in a 175-acre (71-hectare) estate in the Saratoga hills. The estate was left by Senator James Duval Phelan to be used for the encouragement of art, music, literature and architecture.

Within a 40-minute drive of the Hotel

Children's Creativity Museum:

- The Children's Creativity Museum is an innovative project - an entire city block has been developed as an urban destination for youth. The Children's Creativity Museum's mission is to foster the creativity of young people by providing a hands-on, participatory environment for youth arts expression. Gracing the entrance to the Children's Creativity Museum is the historic 1906 Charles Loeffler Carousel from San Francisco's former amusement park, Playland-at-the-Beach.

San Francisco Bay Cruise:

- Enjoy the view of San Francisco from the comfortable enclosed cabin of a 55-foot (17-metre) or 65-foot (20-metre) catamaran, or step on deck to feel the cool breeze off the Bay. Sail by Alcatraz Island on the way to the Golden Gate, look for sea lions and cruise past the city. Choose a 1.5-hour daytime or sunset cruise.

Within a 45-minute drive of the Hotel

Tidepools and Beaches on the Coastside:

- The James V. Fitzgerald Marine Reserve offers three miles of beach and rock inhabited by an abundance of marine life, and is one of the best places in California to view tidepools. Please see our Concierge for a tide schedule, and directions.

Exploratorium:

- Housed within the walls of San Francisco's Palace of Fine Arts, the Exploratorium is a collage of hundreds of science, art and human perception exhibits. The Exploratorium is a leader in the movement to promote museums as educational centres.

Golden Gate Bridge:

- The Golden Gate Bridge is recognised the world over as the international symbol of San Francisco. Built in 1937, it has a 1.7-mile (2.7-kilometre) suspension span and was designed to withstand gale-force winds and earthquakes. Over 40 million vehicles a

year use it to cross the strait separating Marin County from the city. One of five bridges that span San Francisco Bay, it can be crossed by car, on bicycle or on foot. Please see our Concierge for maps and directions.

The Ferry Plaza Farmers Market :

- This California-certified farmers market in San Francisco offers produce and flowers from small regional farmers and ranchers. On Saturdays, the market is held both in front of the Ferry Building on the Embarcadero and on the rear plaza overlooking the Bay. On other days, the market spills out of the Arcades onto the Embarcadero sidewalk. Please see our Concierge for directions and market times.

AT&T Park:

- Home to the San Francisco Giants baseball team, the newly designed AT&T Park features an 80-foot (24-metre) Coca-Cola bottle and playground slides. A miniature AT&T Park behind left field has become a magnet for kids of all of ages.

Deluxe San Francisco City Tour:

- Highlights of this tour aboard an air-conditioned motor coach include Golden Gate Bridge, the Marina District, Palace of Fine Arts, Cliff House, Nob Hill, Chinatown, the Financial District, Presidio National Park, Golden Gate Park, Civic Center and Little Italy in North Beach. Pick-up for this tour is at the Hotel.

Muir Woods and Alcatraz Tour:

- Start this all-day tour aboard a chauffeured luxury van. You will have views of Golden Gate Bridge, Marina District, Palace of Fine Arts, Presidio National Park, Marin Headlands, Mount Tamalpais, Muir Woods National Monument and the bayside town of Sausalito. Next, a 10-minute ferry ride across San Francisco Bay takes you to infamous Alcatraz Island, home to the likes of Al Capone, George "Machine Gun" Kelley and Robert "The Birdman" Stroud. The tour includes a movie of Alcatraz history and a self-guided audio tour, and lasts a total of six to eight hours.

Pier 39 San Francisco:

- Pier 39 in San Francisco offers an array of restaurants, shops, rides and attractions, including UnderWater World, tours on the Blue and Gold Fleet, boisterous sea lions, mimes, jugglers and magicians.

Within a 55-minute drive of the Hotel

Bonfante Gardens Family Theme Park:

- Bonfante Gardens combines the beauty of magnificent gardens, exotic plant life, waterfalls and greenery with the excitement of a traditional family theme park.

Within a 1-hour drive of the Hotel

Año Nuevo State Park and Santa Cruz:

- A short drive to the coast will take you to spectacular Año Nuevo State Park, with its wealth of nature hikes and an excellent opportunity to view elephant seals and sea lions. This 4,000-acre (1,600-hectare) reserve is a major gathering area for northern elephant seals, which may be seen year-round. You'll wind through native California flora on a 3-mile (5-kilometre) hike (round-trip) over sand dunes and sea kelp beds to

the breeding grounds of the elephant seal. Advance reservations are required. Just south of the park lies Santa Cruz, with its famous boardwalk amusement park. During the breeding season, December 15 through March 31, daily access to the reserve is available only via guided walks. Please contact our Concierge for directions.

Santa Cruz Beach Boardwalk:

- This historic amusement park, a half-mile (0.8 kilometres) long, is next to Santa Cruz's mile-long (1.6-kilometre) main beach. The boardwalk has more than 34 rides and attractions, and features two national historic landmarks -; the 1924 Giant Dipper roller coaster and the 1911 Loeffler Carousel -; as well as modern ride thrills, dozens of restaurants, shops, games, indoor arcades and miniature golf.

Within a 1.5-hour drive of the Hotel

Monterey Bay Aquarium:

- There are always new reasons to visit the Monterey Bay Aquarium - exciting new exhibits, animals and family activities, and special events. The Aquarium is located on Monterey's historic Cannery Row, on the edge of beautiful Monterey Bay, just minutes from Carmel and Pebble Beach. Please contact the Concierge for maps, directions and a current schedule.

Carmel-by-the-Sea and Monterey Tour:

- A scenic trip along the coast, aboard a chauffeured luxury van. Travel through Santa Cruz, visit Cannery Row in Monterey, and experience the 17 Mile Drive including Pebble Beach Golf Course and the Lone Cypress. Your tour returns through Silicon Valley, the high-tech capital of the world. This tour starts and finishes at the Hotel.

Napa Valley Wine Tour:

- Experienced local guides will take you through some of California's finest wineries – and pamper you with champagne. Sit back and relax in your personal limousine as you take in the scenic wonders of wine country, and spend the day tasting the wine and champagne of the Napa Valley. During the day, enjoy a gourmet picnic lunch at a scenic winery, or delight yourself at a world-famous restaurant. The tour starts and finishes at the Hotel.

Grand Prix of Monterey:

- Features the Champ Car World Series in September at the Laguna Seca Raceway in Salinas.

Within a 2-hour drive of the Hotel

Santa Cruz Mountain Wineries:

- The area has become recognised as a unique grape-growing region. There are now over 40 small, family-owned wineries in the region. Most wineries are open by appointment only. Please see our Concierge for maps and to make appointments.

CONFERENCE FACILITIES OVERVIEW

Total Space	7,050 sq.ft. 655 m ²
Largest Ballroom	3,757 sq.ft. 349 m ²
Meet and Feed (max. capacity)	130
Breakouts	3
Banquet (max. capacity)	270
Outdoor Banquet (max. capacity)	200
Private Dining (max. capacity)	50

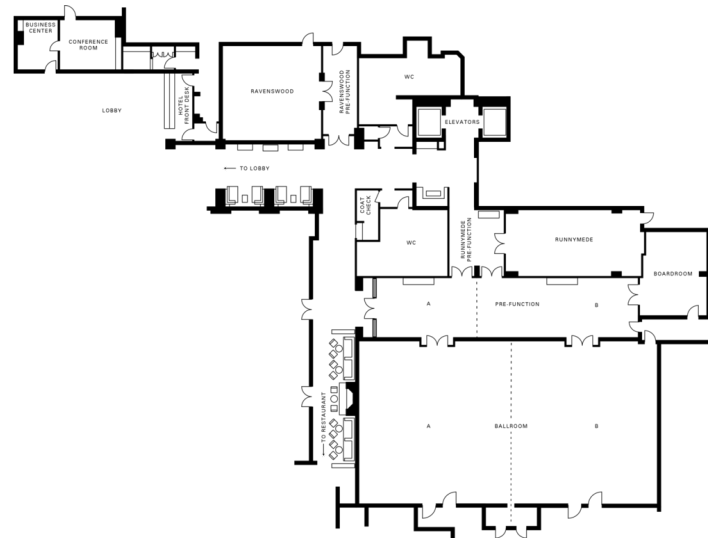
CONFERENCE FACILITIES

Minutes from the best of Palo Alto, these intimate art-filled meeting facilities offer a distraction-free venue for high-level business or social events. From meetings in the stylish Ballroom to cocktail receptions around the pool, count on 21st-century facilities with Four Seasons cuisine and experienced on-site support staff to attend to every detail.

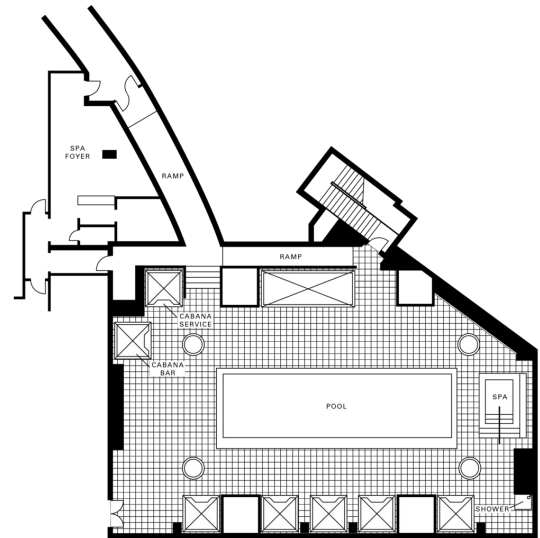
The Hotel offers 7,050 square feet (655 square metres) of indoor meeting space. Foremost is the elegant Ballroom, which accommodates up to 268 people for a banquet and 145 for a conference. Divisible into two separate spaces for smaller events, it also features a pre-function area that lends itself to registration or pre-dinner cocktails.

Two modern Silicon Valley meeting rooms – Ravenswood and Runnymede – can adapt for up to 28 around a conference table, 66 for a reception or 52 for a banquet. Ravenswood’s exclusive pre-function area can host receptions for up to 25. A third meeting room, the Boardroom, accommodates up to 16. In addition, the beautifully landscaped pool deck and courtyard offer a superb backdrop for a variety of outdoor functions.

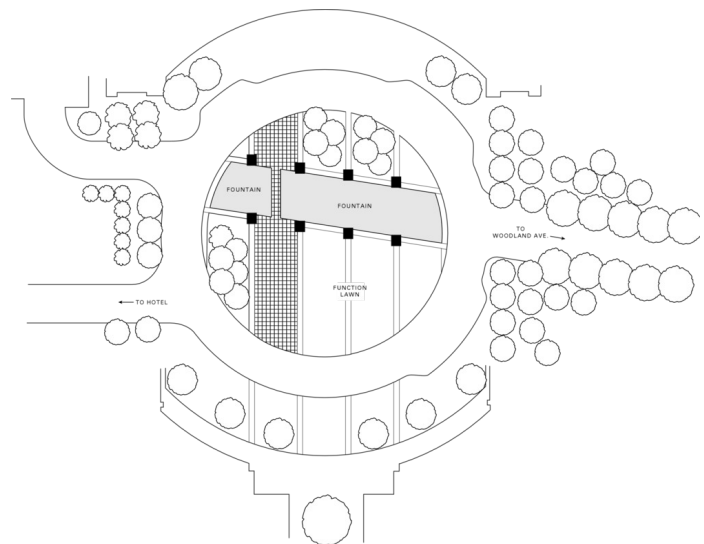
First floor



Third floor



The Courtyard



TECHNICAL ASSISTANCE

Our on-site professional audiovisual technicians are able to provide computer display and video projection packages. State-of-the-art telecommunications such as video and audio conferencing are also available. Equipment includes:

- Advanced lighting and sound systems
- Staging capabilities
- Front and rear screen projectors
- Mixers, amplifiers and microphones
- Wired or wireless Internet access in meeting rooms

MUSIC AND ENTERTAINMENT

Four Seasons conference and banqueting specialists will arrange music and entertainment to complement any part of a function or event. From classical to jazz, swing to hip hop, Four Seasons will be able to meet your needs.

RECEIVING AND MAINTENANCE

The Hotel features a full-service shipping and receiving office. All packages should be sent to the attention of your sales/catering contact, and should include your name along with the conference name and date. Deliveries will be stored in a separate conference storage area. Limited space is available for the storage of large items. Please time shipping to the date of your arrival.

The receiving department or your sales/catering contact will also be happy to assist with special arrangements regarding the delivery of oversized packages or environmentally sensitive equipment.

After your meeting or conference, please coordinate with your sales/catering contact for return shipping of post-conference materials.

The engineering department is available 24 hours a day for general assistance with lighting, room temperature control and minor repairs.

BUSINESS SERVICES

The fully equipped, 24-hour Business Center, together with multilingual Concierge service, provides comprehensive business services and support for our Silicon Valley hotel.

- 24-hour business centre
- Airline reservation service
- Audiovisual equipment
- Business equipment
- Computers
- Express check-in/check-out
- Laptops
- Secretarial service
- Translation and interpretation service
-
- Wired or wireless Internet access in meeting rooms
- Worldwide courier service

SPOUSE PROGRAMMES

Four Seasons Silicon Valley offers a variety of activities that will interest the spouses of meeting participants. The Concierge can provide detailed information on specially tailored spouse programmes such as:

- Carmel-By-The-Sea and Monterey tour
- Cooking classes with Four Seasons chefs
- Customised all-day experience at the spa
- Muir Woods and Alcatraz tour
- Napa Valley wine tour
- Personalised shopping experience on University Avenue in downtown Palo Alto continuing onto the Stanford Shopping Center
- Tour of Stanford University including the Cantor Museum featuring the largest collection of Rodin outside of Paris
- Wine tour at one of 50 wineries in the Santa Cruz Mountains

CHILDRENS AND FAMILY PROGRAMMES

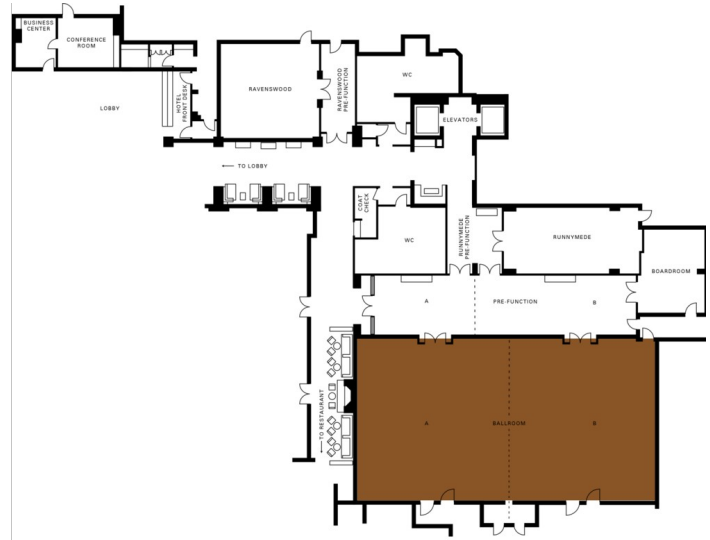
The Concierge can advise on activities to create special memories for the visiting family. Possibilities range from a trip to Paramount's Great America or the Children's Discovery Museum to a cruise in San Francisco Bay.

BALLROOM

Dimensions 45 x 83.5 ft
13.7 x 25.5 m
Size 3,757 sq.ft.
349 m²
Height 16.5 ft
5 m

Capacities

Classroom 162
Hollow square 90
U Shape 75
Theatre 400
Reception 300
Banquet Rounds 300



BALLROOM A

Dimensions 45 x 41 ft
13.7 x 12.5 m
Size 1,845 sq.ft.
171 m²
Height 16.5 ft
5 m

Capacities

Classroom 90
Hollow square 54
U Shape 39
Theatre 120
Reception 165
Banquet Rounds 120

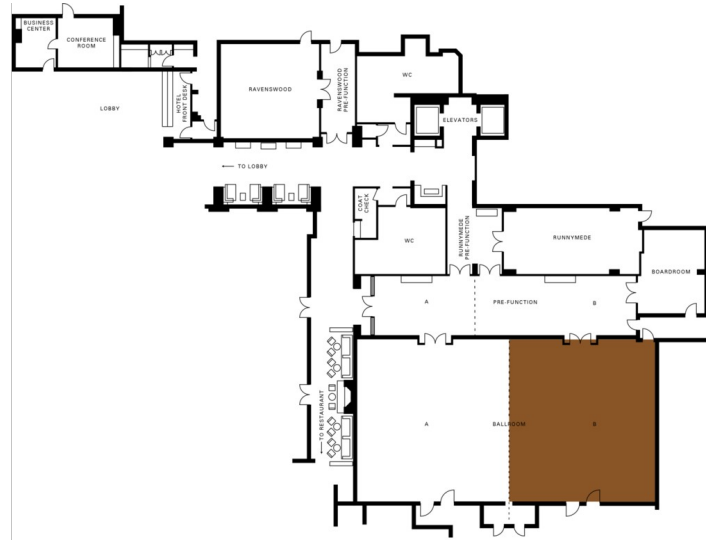


BALLROOM B

Dimensions 45 x 41 ft
13.7 x 12.5 m
Size 1,845 sq.ft.
171 m²
Height 16.5 ft
5 m

Capacities

Classroom 90
Hollow square 54
U Shape 39
Theatre 120
Reception 165
Banquet Rounds 120

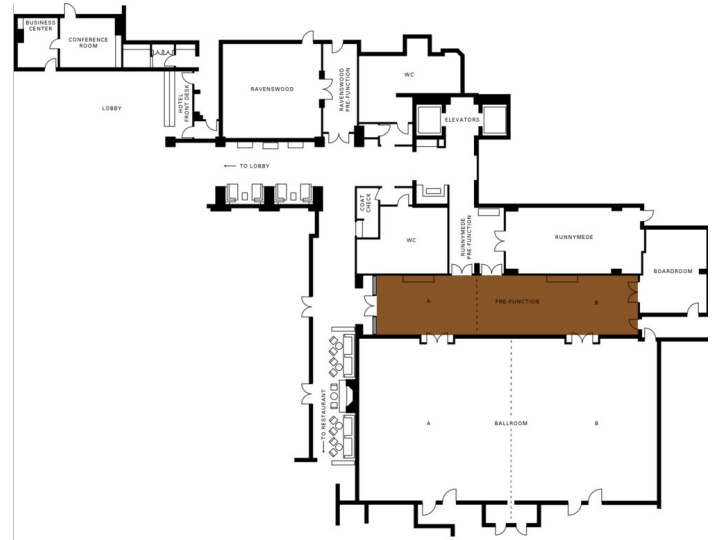


BALLROOM PRE-FUNCTION AREA

Dimensions 16 x 74 ft
4.9 x 22.5 m
Size 1,184 sq.ft.
110 m²
Height 13 ft
4 m

Capacities

Reception 120

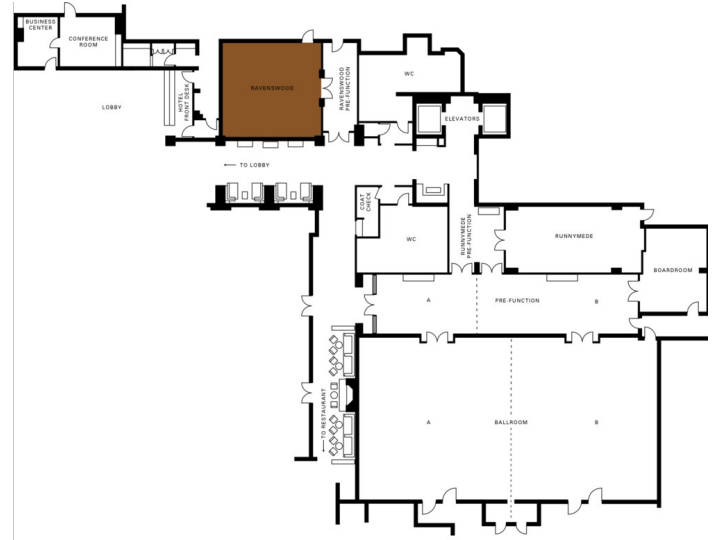


RAVENSWOOD

Dimensions 27 x 27 ft
8.2 x 8.2 m
Size 729 sq.ft.
68 m²
Height 12.5 ft
3.8 m

Capacities

Classroom 36
Hollow square 30
U Shape 24
Theatre 60
Reception 66
Banquet Rounds 50

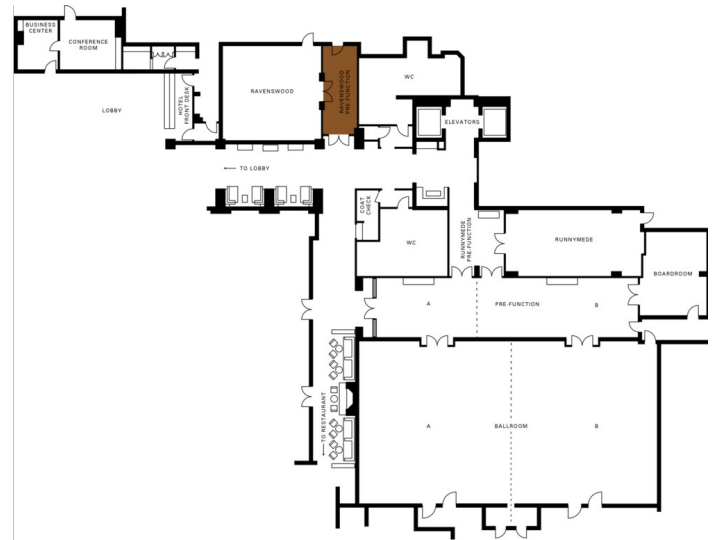


RAVENSWOOD PRE-FUNCTION AREA

Dimensions 10 x 27 ft
3 x 8.3 m
Size 270 sq.ft.
25 m²
Height 12.6 ft
3.8 m

Capacities

Reception 25

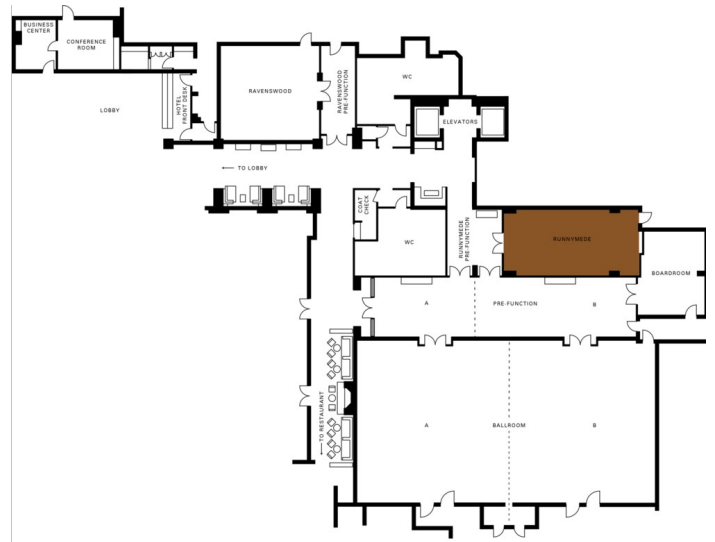


RUNNYMEDE

Dimensions 18 x 39 ft
5.4 x 12 m
Size 702 sq.ft.
65 m²
Height 12.6 ft
3.8 m

Capacities

Classroom 30
Hollow square 30
U Shape 27
Theatre 56
Reception 66
Banquet Rounds 50

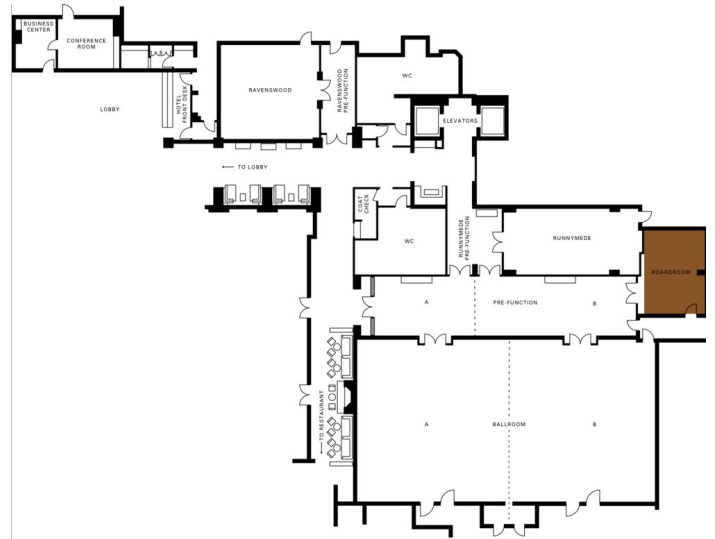


BOARDROOM

Dimensions 12 x 34 ft
3.7 x 10.4 m
Size 408 sq.ft.
38 m²
Height 10 ft
3 m

Capacities

Boardroom 12

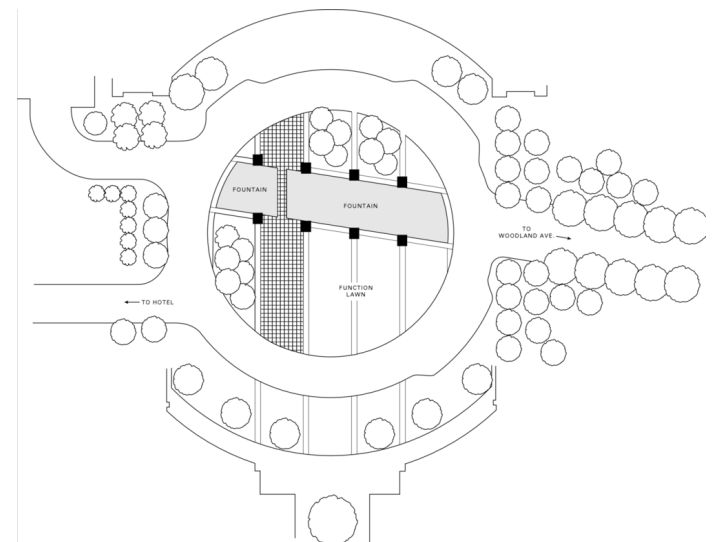


THE COURTYARD

Dimensions 75 x 89 ft
22 x 27 m
Size 5,000 sq.ft.
464.5 m²
Height -
-

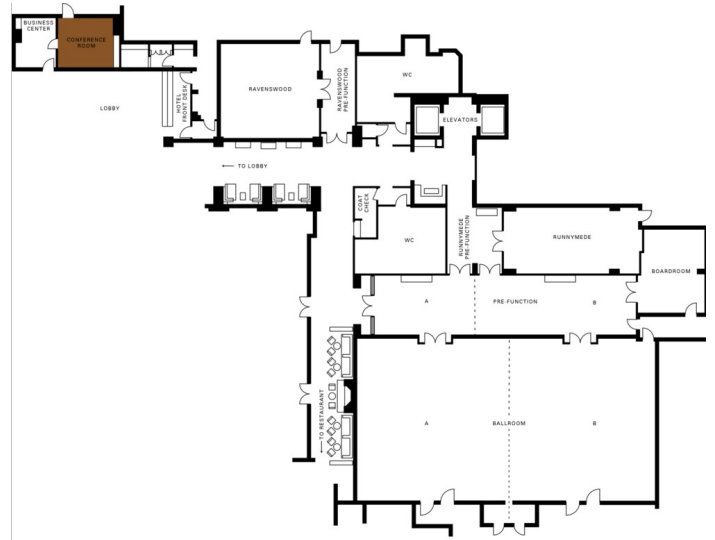
Capacities

Theatre 400
Reception 400
Banquet Rounds 300



EXECUTIVE CONFERENCE ROOM

Dimensions 14 x 18 ft
4 x 5 m
Size 250 sq.ft.
23 m²
Height -
-

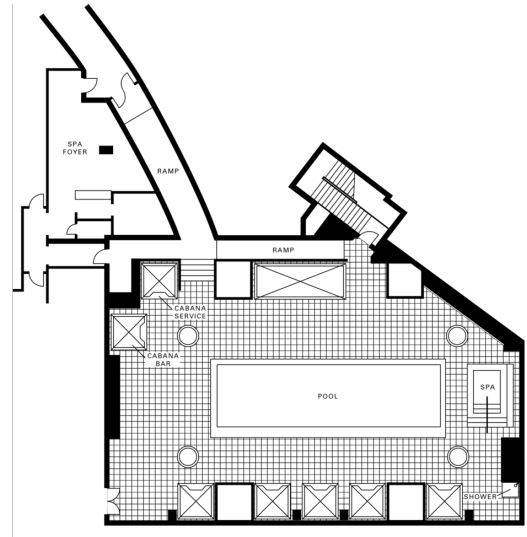


POOL TERRACE

Dimensions 43 x 28 ft
13 x 8.5 m
Size 1,000 sq.ft.
93 m²
Height -
-

Capacities

Reception 125
Banquet Rounds 80



GUEST ROOMS, SUITES AND PRIVATE RESIDENCES OVERVIEW

Offering the most luxurious accommodations in Palo Alto, the 200 contemporary guest rooms – including 27 suites – are comfortably furnished, featuring natural woods and a warm neutral palette. Most of the light, airy rooms have floor-to-ceiling windows to admit the California sunlight. Located near Stanford University, these stylishly functional Silicon Valley accommodations allow guests to remain productive and focused, offering one king bed or two double beds, a flat-screen television and up-to-the minute technology.

The extra-spacious marble bathrooms are bright and inviting, incorporating signature Four Seasons features: deep soaking tubs, separate glass-walled showers, WCs with telephone in a separate alcove and flat-screen televisions.

<i>Room Category</i>	<i>#</i>	<i>Beds</i>	<i>Size (sq ft)</i>	<i>View (m2)</i>	<i>View</i>
- Premier Room	12	1 King	450	42	Full view of San Francisco Bay or Santa Cruz Mountains
- Deluxe-View Room	33	1 King	420	39	San Francisco Bay or Santa Cruz Mountains and courtyard
- Deluxe Room	56	1 King	420	39	Partial view of San Francisco Bay or the Santa Cruz Mountains
- Superior Room	58	1 King or 2 double	405 - 450	38 - 42	San Francisco Bay area
- Accessible Deluxe-View Room	1	1 King	420	39	San Francisco Bay
- Accessible Deluxe Room	1	1 King	420	39	Partial view of San Francisco Bay
- Accessible Deluxe Room with Roll-in Shower	1	1 King	420	39	Partial view of San Francisco Bay
- Hearing-Accessible Deluxe Room	1	1 King	420	39	Partial view of San Francisco Bay
- Accessible Superior Room	5	1 King or 2 double	405 - 450	38 - 42	San Francisco Bay area
- Accessible Superior Room with Roll-in Shower	1	1 King	405 - 450	38 - 42	San Francisco Bay area
- Hearing-Accessible Superior Room	3	2 double	405 - 450	38 - 42	San Francisco Bay area
- Four Seasons Executive Suite	16	1 King	635	59	City or Santa Cruz Mountains
- Presidential Suite	1	1 King	1,855	172	San Francisco Bay
- Luxury Suite	2	1 King	1,360	126	San Francisco Bay
- Silicon Valley Suite	8	1 King	700	65	City or Santa Cruz Mountains

Guest Room Overview

Cosy Moderate Rooms, larger Superior Rooms and spacious Deluxe Rooms frame views of the San Francisco Bay area with floor-to-ceiling windows. Situated on the Hotel's upper floors, Deluxe-View Rooms overlook the Santa Cruz Mountains and the courtyard or San Francisco Bay, while Premier Rooms offer a full view of the mountains or bay. Four Seasons Executive Suites are designed to seclude the bedroom from the living area, offering privacy for informal meetings or entertaining.

Suites Overview

One-bedroom Silicon Valley Suites feature an ample living area, a dining table for four and a convenient extra powder room, making them ideal for entertaining, informal meetings or family travel. The larger one-bedroom Luxury Suites overlook San Francisco Bay and offer dining facilities for six supported by a service pantry. On the Hotel's top floor, the Presidential Suite is a grand setting for gracious entertaining, with expansive views of San Francisco Bay from the living room and master bedroom. A large foyer leads to the living room, which features comfortable sofas, lounge chairs and a dining area for eight.

FOUR SEASONS EXECUTIVE SUITE

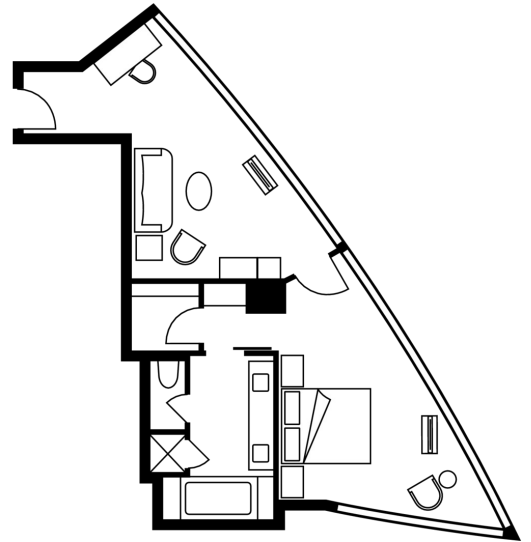
Number 16
Beds King bed
Size 635 sq ft
59 m²

Location

2nd to 10th floors

View

City or Santa Cruz Mountains



PRESIDENTIAL SUITE

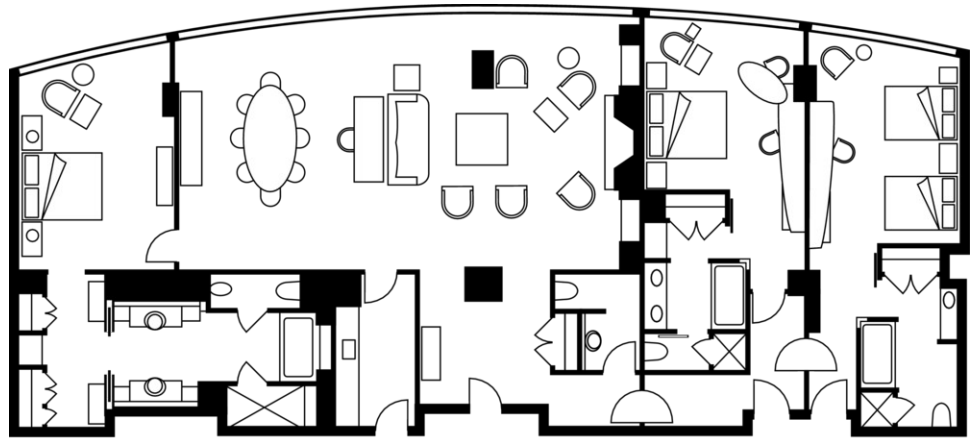
Number 1
Beds King bed
Size 1,855 sq ft
172 m²

Location

10th floor

View

San Francisco Bay



LUXURY SUITE

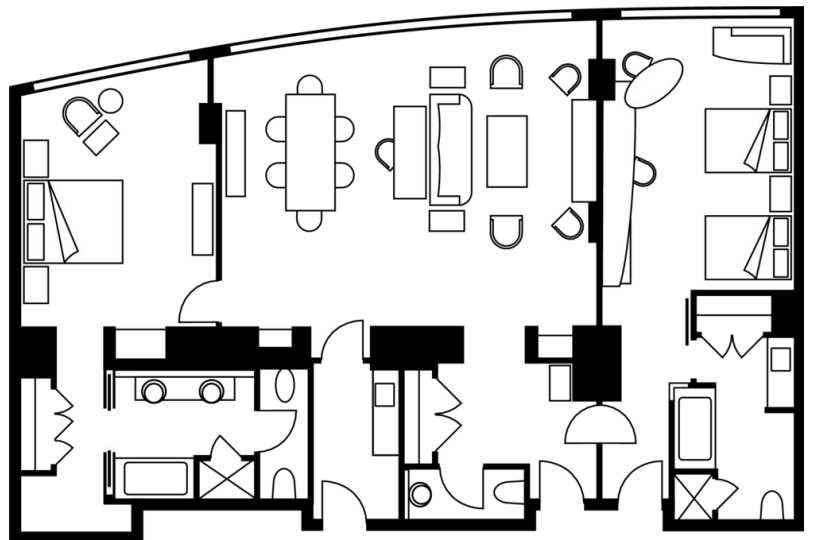
Number 2
Beds King bed
Size 1,360 sq ft
126 m²

Location

8th and 9th floors

View

San Francisco Bay



SILICON VALLEY SUITE

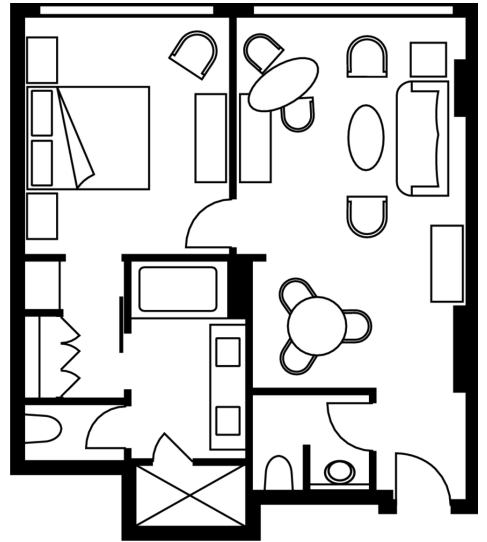
Number 8
Beds King bed
Size 700 sq ft
65 m²

Location

2nd to 9th floors

View

City or Santa Cruz Mountains



AMENITIES

- Bedside outlet for recharging mobile telephones
- Cable television
- Complimentary newspaper
- Down duvets
- Down pillows
- Fax machine on request
- Hypo-allergenic pillows on request
- In-room safe suitable for a laptop computer
- Multi-line telephone(s) with voicemail
- Refrigerated private bar
- Thick terry bathrobes
- Twice-daily housekeeping service
- Wired or wireless Internet access

GUEST SERVICES

- 24-hour In-Room Dining
- 24-hour laundry/dry-cleaning/pressing
- 24-hour multilingual Concierge
- Complimentary overnight shoeshine
- Non-smoking rooms
- One-hour pressing
- Restaurant
- Self-parking
- Valet parking

VIP GIFTS AND WELCOME AMENITY

Special arrangements can be made for clients to purchase welcome amenities for their VIP guests.

DINING HOURS OF OPERATION

<i>Quattro</i>	
<i>Breakfast</i>	
Every day	6:30 am - 11:00 am
<i>Lunch</i>	
Every day	11:30 noon - 2:30 pm
<i>Dinner</i>	
Every day	5:30 pm - 10:00 pm
<i>The Bar</i>	
<i>Light meals and appetisers</i>	
Every day	11:00 am - 11:00 pm
<i>Cocktails</i>	
Every day	11:00 am - midnight
<i>In-Room Dining</i>	
<i>Breakfast</i>	
Every day	6:00 am - 11:00 am
<i>All-Day Dining</i>	
Every day	24 hours -
<i>Hospitality Snacks</i>	
Every day	24 hours -

DINING

Enjoy light contemporary cuisine complemented by daily specials, innovative desserts and seasonal menus at Quattro. Sip fine wines and creative cocktails in the spirited Quattro Bar or al fresco on the terrace. Enjoy fresh salads, appetizers, sandwiches, and smoothies as you lounge by the pool.

RESTAURANTS

Quattro

Quattro's contemporary setting is enhanced by abundant California sunlight and natural wood and stone elements that evoke the environment of the peninsula. The room's atmosphere is one of conviviality and community, supported by the personalised hospitality of our service team. On the garden terrace, guests can dine amid the natural beauty of the surroundings, complemented by the relaxing sound of a trickling water wall.

- Cuisine: Contemporary Italian
- Indoor seating: 80
- Outdoor seating: 75

LOUNGES

The Bar

Adjacent to the restaurant, the sleekly elegant Bar is the heart of the action – a meeting place of choice for Palo Alto residents and Hotel guests, offering an imaginative selection of snacks and cocktails. Indoor, comfortable lounge seating, large centrepiece fireplace and wrap-around bar create a relaxing atmosphere, while the terrace is a great location for cocktails under the stars. Stylish and intimate, The Bar is a standout among Silicon Valley bars.

- Indoor seating: 30; 10 at the bar
- Outdoor seating: 50

RECREATION FACILITIES

Take a dip in the whirlpool or sip your own smoothie creation in a private cabana by the rooftop pool. Restore serenity with a hot stone therapy or head-to-toe massage in the Spa. Enjoy the steam room after a workout – or simply because. And call on the resourceful Four Seasons Concierge to assist with shopping plans, special access to nearby museums or anything else that will make your visit exceptional.

SPA SERVICES

An inspiring array of restorative and beauty treatments promotes the art of well-being in our full-service Palo Alto day spa. Treatments may be enjoyed in seven personalised treatment rooms – including a wet treatment room – and range from body therapies and massage to facials, manicures and pedicures. In-room and poolside treatments may also be arranged.

- Number of treatment rooms: 7

FITNESS FACILITIES

Our state-of-the-art Bay Area fitness centre offers a wide range of cardiovascular equipment, featuring individual audiovisual monitors and wireless headsets. As well, we have an extensive selection of weight-training machines and free weights. The services of personal trainers are available on request. Maps of jogging and biking trails around the Hotel are also available.

- Size: 1,100 sq ft / 102 m²

POOL

Rooftop Pool

In a secluded, garden-like setting that includes lush landscaping and a water wall, guests can swim in the Hotel's unique rooftop lap pool or relax in the whirlpool. Private cabanas, umbrellas and comfortable lounge chairs are offered, and cool drinks and snacks are served poolside. In addition, the pool area is equipped with television, telephones and Internet access.

GOLF

Palo Alto Golf Course

Golfers will enjoy the demands of the Palo Alto Municipal Golf Course, designed by Robert Trent Jones and Gary Roger Baird. The golf facility consists of a recently renovated 18-hole championship length course, lighted driving range, full-service restaurant and bar, fully stocked golf shop, practice putting green area and golf carts with canopy tops. Reservations can be made seven days in advance. Please see our Concierge for assistance with tee times.

Shoreline Golf Course

Located in the city of Mountain View, Shoreline Golf Course is an 18-hole, championship-level golf course. It has excellent practice facilities, including a short game practice area (with practice bunker), large practice putting green, small chipping green and a night-lighted practice range with 26 tee stations, target greens (with laser-measured flagsticks) and a large grass tee used on weekends. Designed by Robert Trent Jones Jr., the buffer zone of windswept land is part of Mountain View's Shoreline Park, which also features a sailing lake, bicycle and jogging trails, and other open space uses. Tee times may be booked seven days in advance. Please see our Concierge for assistance.

Poplar Creek Golf Course

Poplar Creek is a championship, 18-hole, par 70 course located adjacent to San Francisco Bay, in San Mateo off Highway 101. The golf course features rolling fairways lined by nearly 1,000 mature trees; large, undulating greens that average almost 5,500 square feet (510 square metres); and five rock-edged lakes with two waterfalls and streams. Tee times may be booked seven days in advance. Please see our Concierge for assistance.

Crystal Springs Golf Course

You'll see wildlife and enjoy views of open space during a round at Crystal Springs. Located just 20 minutes south of San Francisco and 20 minutes north of Palo Alto, the 18-hole course sits amidst a permanently protected 32,000-acre (13,000-hectare) watershed, where bobcats, foxes, mule deer and hawks (and 70 other species of birds) make their home. Crystal Springs also offers a driving range, putting green and short game practice area. Tee times may be booked seven days in advance. Please see our Concierge for assistance.

Presidio Golf Course and Clubhouse

The prestigious Presidio Golf Course opened for public play in 1995 and has quickly gained a reputation as one of the nation's top public courses. Located minutes from downtown San Francisco, this 18-hole course plays 6,500 yards of challenging golf winding through beautiful eucalyptus and Monterey pine trees. Designed with tight fairways and strategically placed bunkers, the hilly course offers a unique challenge for golfers of all abilities. Reservations are accepted for up to 30 days in advance. Please see our Concierge for assistance.

Half Moon Bay Golf Links

Half Moon Bay Golf Links features two award-winning 18-hole championship golf courses overlooking the Pacific Ocean. The Old Course, formerly known as the Links Course, was originally designed by Francis Duane and Arnold Palmer in 1973. It was redesigned by Arthur Hills in 2000. Several species of trees – including cypress, Monterey and New Zealand Christmas trees – line the fairway and surround the generous yet challenging greens. The Ocean Course is an oceanfront course, in the tradition of Scotland's finest links courses. It offers an ideal setting for picturesque ocean views and challenging golf. Reservations may be made three weeks in advance. Please see our Concierge for assistance.

Cinnabar Hills Golf Club

Peacefully tucked in and around the hills a short drive south of fast-paced Silicon Valley, Cinnabar Hills Golf Club blends championship-calibre golf with spectacular views. Each hole has been crafted to maintain the natural slope of the area and to protect the wildlife that resides here. Named for the rich red ore mined here during the 1800s, Cinnabar Hills offers golfers three distinct nines – the Canyon, the Lake and the Mountain. Reservations may be made 30 days in advance. Please see our Concierge for assistance.

Pasatiempo Golf Club

Located in Santa Cruz, California, Pasatiempo Golf Club and many of its holes offer spectacular views of nearby Monterey Bay. Pasatiempo was designed by world-renowned golf architect Alister MacKenzie and was ranked number 31 in *Golf Digest's* 2005 America's Greatest Public Courses. From greens that have challenged generations of

golfers including Bobby Jones, Ken Venturi and Tiger Woods, to rich golf history and breathtaking scenery, Pasatiempo delivers a memorable golf experience. Please contact our Concierge for assistance with tee times.

Pebble Beach Golf Courses

The game of golf is at its worldwide best at Pebble Beach. Each of the four courses offers a unique heritage, breathtaking beauty and a once-in-a-lifetime experience. At each course, a staff of professionals offers individual and group instruction, clinics and group tournaments. Caddies are available. Tee times may be made 24 hours in advance.

HIKING

Stanford Dish

Two-thirds of Stanford's acreage is open space. A popular respite for students, this foothills habitat conservation area is open to people wanting to jog and hike on trails that pass oak, chaparral, grazing land for cattle and beautiful panoramas of the Bay region – on a clear day the skyscrapers of San Francisco are visible. The Dish is home to a variety of vegetation and wildlife. Look for Valley, Blue and Coast live oaks, and birds such as meadowlarks, bluebirds and red-winged blackbirds. Hiking and jogging in the foothills, permitted only on the clearly delineated routes, is encouraged from dusk to dawn. Picnics, games and dogs are not allowed. Please see the Concierge for additional details and directions.

Wunderlich Park

Wunderlich Park, a county park in Woodside, nestles on the hillside below Skyline Boulevard. Hike 5 miles (8 kilometres) uphill in a heavily shaded redwood forest, from the park entrance on Woodside Road to the edge of Skyline Boulevard.

Edgewood Park

The serpentine grasslands of Edgewood Park and Natural Preserve are famous for their magnificent displays of wildflowers in the spring. The park's location (near Interstate 280 and Edgewood Road) makes this beautiful display readily accessible. Wonderful hiking and sightseeing opportunities are afforded by the park's 467 acres (189 hectares) of woodlands and grasslands. Docent-led wildflower walks, provided by the Friends of Edgewood, explore Edgewood's floral beauty, which includes many rare species. The walks take place on Saturdays and Sundays, generally from mid-March through mid-June. Please see our Concierge for details and directions.

Huddart Park

The forested slopes and steep, cool canyons of Huddart Park are located only a short drive from the Hotel. The park, 3.5 miles (5.6 kilometres) west of Highway 84, affords over 900 acres (360 hectares) of coastal mountain environment for a variety of activities. Miles of trails offer even the experienced hiker hours of pleasure, and many of the trails are also open to equestrian use, making the park one of the favourite destinations of the local equestrian community. The grassy meadow just below the Werder Shelter has long been a favourite of park visitors. Its 5 acres (2 hectares) of gently sloping grassy meadow is a popular location for a relaxing picnic. Please see our Concierge for maps and directions.

Purisima Creek Redwoods Open Space Preserve

Visit the redwood groves and over 20 miles (32 kilometres) of various hiking trails in this 2,500-acre (1,010-hectare) park. Some trails are exclusively for mountain bikers and equestrians.

LOCAL ACTIVITIES

Palo Alto

The blend of business, residential and vibrant downtown/University Avenue defines Palo Alto's unique character. A charming mixture of old and new, Palo Alto's tree-lined streets and historic buildings reflect its California heritage. Downtown Palo Alto/University Avenue provides great shopping, coffee spots, eateries and outdoor dining. Influenced by a university and upscale tech demographic, you will find a great mixture of shops and services.

Stanford University

The Stanford campus is located between San Francisco and San Jose in the heart of Silicon Valley. Known affectionately as "The Farm," its 8,100 acres (3,278 hectares) reach from the rural foothills of the Santa Cruz Mountains to the bustling Stanford Shopping Center in Palo Alto. The Stanford Campus offers a wealth of sightseeing opportunities. Public walking tours are offered year-round at 11:00 am; please see our Concierge for details and a campus map.

INCENTIVE ACTIVITIES

Sample itinerary

Four Seasons is pleased to help customise an itinerary for your group or party. Let us help you experience the city's vibrant restaurant and wine culture, traditional and contemporary art, world-class shopping and stunning natural spaces, all waiting to be explored. Following is a sample group itinerary. We invite you to discuss your needs with us.

Day 1 After you have been greeted at the airport, our car service will take you to the Hotel.

Settle in, and head to the rooftop pool to enjoy beverages, snacks or lunch while relaxing in the California sun. Or take a stroll through the most-exclusive residential area in Palo Alto with a map provided by our Concierge.

Spa time: Unwind at the Spa to prepare your mind and body for the days to come. Offering a range of treatments, from Sonya Dakar facials to Kerstin Florian aromatherapy massages, the Spa makes relaxation effortless.

Picnic at the park: Take advantage of Palo Alto's natural beauty at one of its many parks, or visit Stanford University's beautiful campus. Enjoy a picnic with one of our specially boxed to-go lunches prepared to your liking through In-Room Dining.

Hiller Aviation Museum: Discover the past, present and future of aviation.

Day 2 *Gamble Garden:* This non-profit horticultural foundation is a historic point of interest, and consists of the main Colonial/Georgian Revival-style house and 23 gardens divided into two parts: the formal garden, which reflects the original plans for the garden, and the working garden, which is used for educational and experimental demonstrations and displays.

Feeling sporty? Choose from over a dozen nearby tennis courts or golf courses, including two Jack Nicklaus Signature Golf Courses, or test your skills at lawn bowling. Take a nice hike through miles of trails in Palo Alto's open space and wildlife preserves.

Santa Cruz: Take a scenic drive out to Santa Cruz and feel the soft, warm sand between your toes. The Santa Cruz Beach Boardwalk is an experience everyone will enjoy, complete with carnival games, roller coasters and rides located just steps from the beach.

HP Garage Tour: Discover the birthplace of Silicon Valley with a visit to the garage where Bill Hewlett and Dave Packard worked and created their first product, the audio oscillator, which was purchased by Walt

Disney Studios to develop an innovative sound system for the movie classic *Fantasia*.

Stanford Shopping Center: Palo Alto prides itself on being a highly walkable community, so why not shop till you drop? Stanford Shopping Center is a great option for those seeking a variety of world-class stores. This open-air European-style street market is home to Tiffany & Co., Cartier, Bloomingdales, Neiman Marcus and over 140 other boutique and brand-name stores.

Boutique shopping: For those seeking the boutique and gallery experience, University and California Avenues set the tone with unique public art, tree-lined streets and numerous boutique shops.

Sporting events: Just a 10-minute drive through downtown Palo Alto will take you to Stanford's newly renovated stadium and the home of some of America's elite college players. From volleyball to football, you can always expect an exciting game against some of the country's top collegiate teams.

Concerts: Our central location within the San Francisco Bay Area provides quick and easy access to venues such as the Shoreline Amphitheater, Santa Cruz Mountain Winery and HP Pavilion, to name a few. These venues have featured top-notch comedians and hosted some of the biggest names in music of all genres.

Dine downtown: Experience some of downtown Palo Alto's exquisite dining at some of the best restaurants in the San Francisco Bay Area, with a plethora of different cuisines to choose from.

Day 3

Santa Cruz Mountains Winegrowers Passport: This fun-filled day gives you the opportunity to meet the brilliant winemakers of the Santa Cruz Mountains and discover where and how they produce some of the world's greatest wines. Visit over 50 participating vineyards and dine at one of the many participating restaurants that offer specials, including waived corkage on Santa Cruz Mountains Wines and discounts on dinner.

Cantor Art Center: The Cantor Arts Center's diverse collections span continents, cultures and 4,000 years of art history. See a wide range of changing exhibitions and take advantage of docent tours, lectures, gallery talks, symposia, classes and special events.

Palo Alto Art Center: Discover this nationally acclaimed regional visual art centre whose exhibition programme focuses on the art and artists of the San Francisco Bay Area.

Computer History Museum: Experience the home of one of the world's largest international collections of artefacts from the information and computing age.

Rodin sculptures: The Cantor Arts Center's collection of Rodin bronzes is one of the largest in the world, second only to the Musée Rodin in Paris. The Rodin Sculpture Garden is open all hours, with lighting for night-time viewing.

The Papua New Guinea Sculpture Garden: This garden, located on Stanford University's campus, contains 40 wood and stone carvings of people, animals and magical beings that were created on site in 1994. The carvings depict stories of creation and cultural traditions.

Art tour at Four Seasons Hotel Silicon Valley: Enjoy an audio-guided art tour of the Hotel and learn about the beautiful art displayed throughout. After the tour, continue your art appreciation at Quattro restaurant, where numerous pieces are on display.

Palo Alto Art Walk: Experience public art and several art galleries in downtown Palo Alto. Throughout the evening, you'll have the opportunity to meet the artists and learn more about their works. After the walk, enjoy a glass or two at The Wine Room or Lavanda, two of downtown Palo Alto's great wine bars.

TheatreWorks: TheatreWorks is now in its 38th year as the nationally acclaimed professional theatre of Silicon Valley. TheatreWorks offers a year-round season of musicals, comedies and dramas.

Day 4	Enjoy breakfast at Quattro restaurant before being chauffeured back to the airport.
-------	---

Rooms	Dimensions		Size		Height		Classroom	Hollow square	U-shape	Theatre	Reception	Banquet rounds	Conference/ boardroom
	(ft)	(m)	(sq ft)	(m2)	(ft)	(m)							
- Ballroom	45 x 83.5	13.7 x 25.5	3,757	349	16.5	5	162	90	75	400	300	300	90
- Ballroom A	45 x 41	13.7 x 12.5	1,845	171	16.5	5	90	54	39	120	165	120	54
- Ballroom B	45 x 41	13.7 x 12.5	1,845	171	16.5	5	90	54	39	120	165	120	54
- Ballroom Pre-function Area	16 x 74	4.9 x 22.5	1,184	110	13	4	-	-	-	-	120	-	-
- Ravenswood	27 x 27	8.2 x 8.2	729	68	12.5	3.8	36	30	24	60	66	50	22
- Ravenswood Pre-function Area	10 x 27	3 x 8.3	270	25	12.6	3.8	-	-	-	-	25	-	-
- Runnymede	18 x 39	5.4 x 12	702	65	12.6	3.8	30	30	27	56	66	50	22
- Boardroom	12 x 34	3.7 x 10.4	408	38	10	3	-	-	-	-	-	-	12
- Executive Conference Room	14 x 18	4 x 5	250	23	-	-	-	-	-	-	-	-	-
- Pool Terrace	43 x 28	13 x 8.5	1,000	93	-	-	-	-	-	-	125	80	-
- The Courtyard	75 x 89	22 x 27	5,000	464.5	-	-	-	-	-	400	400	300	-