



## Quick Reference Guide

---

Last updated May 3, 2012 | For additional information please contact the hotel directly

---

Four Seasons Hotel Seattle  
99 Union Street, Seattle, Washington, 98101, U.S.A.  
Tel 1.206.749.7000 | Fax 1.206.749.7099

[www.fourseasons.com/seattle](http://www.fourseasons.com/seattle)



99 Union Street  
Seattle, Washington 98101, U.S.A.  
Tel 1.206.749.7000  
Fax 1.206.749.7099

#### AIRPORT

- Seattle-Tacoma International Airport (SEA): 20 – 30 minutes (24 kilometres/15 miles)

#### TABLE OF CONTENTS

- 2 *Introduction*
- 4 *Destination*
- 10 *Conference Facilities*
- 17 *Guest rooms, Suites and Private Residences*
- 24 *Dining*
- 25 *Recreational Facilities*
- 26 *Appendix: Conference Chart*

Embodying the natural character and relaxed confidence of the Pacific Northwest, Four Seasons Hotel Seattle blends city sophistication and outdoor adventure. With prime convenience to the downtown waterfront, the location is in the heart of business and shopping – steps to the Seattle Art Museum, Benaroya Hall and Pike Place Market.



In 147 guest rooms and suites, Four Seasons offers sleek, modern interiors crafted of wood and stone – bringing the outdoors inside. Abstract artwork showcases the city's creativity, while floor-to-ceiling windows present panoramas of Elliott Bay and Puget Sound, the city skyline and Olympic Mountain peaks.

Dining celebrates organic local ingredients, complemented by the finest Northwest wines. Business and social events unfold in a grand ballroom with floor-to-ceiling water views. For relaxation, the Spa's grotto-like treatment rooms capture the serenity of nature, with massages scented by forest cedar. On the rooftop terrace, the infinity-edge swimming pool is joined by an open fireplace.

An urban portrait of nature's beauty, Four Seasons creates the consummate Pacific Northwest experience.

#### TRANSPORTATION

All major and domestic airlines serve Seattle-Tacoma International Airport. Depending on traffic and weather, transfer time from the airport to the Hotel is 20 to 30 minutes. All major car rental companies operate at the airport, and taxi and limousine services are available.

---

---

WEATHER CHART

---

Month	°C		°F	
	Highs/Lows		Highs/Lows	
January	8	/ 2	46	/ 36
February	10	/ 3	50	/ 37
March	12	/ 4	53	/ 39
April	14	/ 6	58	/ 42
May	18	/ 8	64	/ 47
June	21	/ 11	70	/ 52
July	24	/ 13	75	/ 55
August	24	/ 13	75	/ 55
September	21	/ 11	70	/ 52
October	16	/ 8	60	/ 46
November	11	/ 4	51	/ 40
December	8	/ 2	46	/ 36

---

DESTINATION

The most prominent city in the US Pacific Northwest, Seattle is situated on Elliott Bay in Puget Sound. Water, mountains and forests provide a spectacular backdrop for the continually evolving skyline.

The city is surrounded by lakes, including Lake Washington, Lake Union and Lake Sammamish. To the west rise the Olympic Mountains, and to the east, the Cascade Mountains. Nearby volcanoes include Mount Rainer and Mount St. Helens. The abundance of trees and greenery has earned Seattle the nickname of the Emerald City.

The Seattle region has been inhabited for at least 4,000 years, while European settlement only began in the mid-19th century. The first permanent white settlers – led by Arthur A. Denny and known as the Denny Party – arrived in 1851. They called the city “Seattle” as a variation of the name of a local Native American leader, Chief Sealth.

With a population of approximately 3.5 million, Seattle now boasts a dynamic business community, lively waterfront and eclectic neighbourhoods, as well as vigorous art, sports and restaurant scenes.

WEATHER

Seattle has a mild climate with wet winters and dry summers, similar to the Mediterranean. Although Seattle is often thought of as a rainy city, it actually receives less rainfall per year than New York City, Atlanta and Washington, DC.

LOCAL ATTRACTIONS AND ACTIVITIES

At Four Seasons, you enjoy a unique vantage point from which to explore the sights, sounds and experiences around you. We hope the highlights of local attractions below help simplify your planning. Please let us know how else we can assist you.

*Within a few minutes walk of the Hotel*

Seattle Art Museum:

- Designed by Robert Venturi, the Seattle Art Museum is internationally recognised for its displays of Asian, African, Native American and local Pacific Northwest art. The museum also offers special exhibits throughout the year.

Pike Place Market:

- Pike Place Market is the oldest continuously operated independent farmers' market in the United States. It includes an exciting array of arts and crafts vendors, permanent retailers and street vendors.

*Within a 5-minute walk of the Hotel*

Seattle Symphony:

- Home to the Seattle Symphony, Benaroya Hall is praised for its beauty and acoustics. Tickets can be purchased through the Concierge or Ticketmaster.

Downtown Waterfront:

- Seattle's waterfront offers small shops and fish-and-chip spots, and is the departure point for Washington State Ferries and charter cruises, as well as the home of the

Seattle Aquarium and the Odyssey Maritime Discovery Center.

Seattle Aquarium:

- The Seattle Aquarium offers a marine experience focused on the importance of preservation. More than 15,000 species of underwater life found in Puget Sound are on display here, including harbour seals, sea otters and orca whales.

*Within a 10-minute walk of the Hotel*

Pacific Place:

- Pacific Place is a five-level premier shopping centre offering stores, restaurants and an 11-screen movie theatre. Shops include Cartier, Tiffany & Co., Williams-Sonoma, Restoration Hardware and Barneys New York. The flagship Nordstrom is adjacent to the shopping centre.

ACT Theatre:

- The ACT Theatre at Kreielsheimer Place offers contemporary plays on three stages. The Allen Theatre is a 387-seat theatre-in-the-round, with seven rows of seating surrounding a small stage. The Falls Theatre is a 381-seat thrust stage with seating on three sides, arranged so that no seat is farther than 10 rows from the stage. The Bullitt Cabaret is a flexible space that seats up to 150 for a variety of shows and workshops. Tickets should be purchased in advance through the Concierge, the ACT box office or Ticketmaster.

5th Avenue Theatre:

- The 5th Avenue Theatre was built in 1926 and modelled on China's Forbidden City, Temple of Heaven and Summer Palace. This uniquely beautiful theatre offers classic musicals and specialty productions. Tickets can be purchased through the Concierge or Ticketmaster.

The Westlake Center:

- The Westlake Center is located in the heart of downtown Seattle. The four-level glass pavilion shopping centre offers a wide range of national retailers and a unique selection of fine-quality regional merchandise.

*Within a 15-minute walk of the Hotel*

Olympic Sculpture Park:

- The Olympic Sculpture Park is a 9-acre (3.6-hectare) industrial site that is now a vibrant green space for art. The park houses more than 80,000 plants, 554 trees and large sculptures by Richard Serra, Alexander Calder, Louise Bourgeois and other top artists. Admission is free, and the park also offers incredible views of downtown, the Olympic Mountains and Puget Sound.

Pioneer Square:

- Pioneer Square is the oldest neighbourhood in the city and offers a glimpse of Seattle's historic beginnings. The square boasts many fine art galleries, shops and restaurants, as well as an eclectic assortment of small clubs with a broad spectrum of live music. Seattle offers one of the country's largest concentrations of fine art galleries, and regional arts and crafts are strongly represented.

*Within a 20-minute walk of the Hotel*

Seattle Mariners Baseball at Safeco Field:

- From April through September, the Mariners play at Safeco Field, which features a grass field and retractable roof. Tickets can be purchased through the Concierge or Ticketmaster.

Seattle Seahawks Football at Qwest Field:

- Experience Seahawks football in a state-of-the-art stadium that brings the beauty of the Pacific Northwest to the NFL. The new stadium seats 67,000 and features a roof covering 70% of the seating area. Fans enjoy comfortable seats, with sideline seating a mere 52 feet (16 metres) from the playing field and end-zone seats just 40 feet (12 metres) from the action. Tickets can be purchased through the Concierge or Ticketmaster.

*Within a 25-minute walk of the Hotel*

Seattle Storm WNBA Basketball at Key Arena:

- The Storm play at Key Arena at the Seattle Center from November through mid-April. Tickets can be purchased through the Concierge or Ticketmaster.

Pacific Northwest Ballet:

- Founded in 1972 and under the artistic guidance of Kent Stowell and Francia Russell since 1977, Pacific Northwest Ballet is one of the largest and most highly regarded ballet companies in the United States. Each year from September to June, the company of 49 dancers presents 100 performances of full-length and mixed repertory ballets. Their performance of *The Nutcracker* in December is a Seattle tradition for the whole family. Tickets can be purchased through the Concierge or Ticketmaster.

Seattle Opera:

- Opened in 1964, Seattle Opera was only the second company in the United States to present Richard Wagner's complete four-opera Ring Cycle in a week's time. Seattle Opera offers performances from October through May. Tickets can be purchased through the Concierge or the theatre box office.

Seattle Repertory Theatre:

- The Seattle Repertory Theatre is a local favourite, and offers performances in two intimate theatres at the Seattle Center, the Leo K. Theatre and the Bagley Wright Theatre. The Rep's productions bring fresh style to classics, contemporary plays and Shakespeare. Tickets should be purchased in advance through the Concierge or the Seattle Rep box office.

The Children's Museum Seattle:

- Located at the Seattle Center, The Children's Museum is aimed at one- to five-year-olds and offers child-sized cultural exhibits and imagination stations for kids to create art, discover and learn through play.

Experience Music Project / Science Fiction Museum and Hall of Fame:

- Located at the Seattle Center, these facilities are housed in a 140,000-square-foot

(13,000-square-metre) building designed by Frank Gehry. The Experience Music Project explores creativity and innovation in popular music through interpretative interactive exhibitions, cutting-edge technology and rare artefacts and memorabilia. The Science Fiction Museum and Hall of Fame is the first museum devoted to the thought-provoking ideas and experiences of science fiction and celebrates the genre's most respected writers, artists, publishers and filmmakers.

Pacific Science Center:

- The Pacific Science Center offers hands-on science exploration and two IMAX theatres and is a great destination for families. The Center's special exhibits change regularly.

Space Needle:

- Built for the 1962 World's Fair, the Space Needle has become the symbol of Seattle. The SkyCity restaurant at the 500-foot (152-metre) level is open seven days a week for brunch, lunch and dinner. The dining room makes a 360-degree revolution every 50 minutes. From the Observation Deck located on the 520-foot (158-metre) level, you can see the skyscrapers of the city below you, the sparkling waters of Puget Sound, snow-capped Mount Rainier and the majestic Olympics and Cascades.

The Seattle Center:

- Site of the 1962 World's Fair, the Seattle Center is the home of the Space Needle, Pacific Science Center, Children's Museum, Seattle Repertory Theatre, INTIMAN Theatre, Children's Theatre, Experience Music Project, Seattle Opera, Pacific Northwest Ballet and an amusement park. Venue hours vary.

*Within a 15-minute drive of the Hotel*

Washington Park Arboretum:

- At the Washington Park Arboretum, you can marvel at the over 20,000 trees, shrubs and vines on display, including 4,600 different species from around the world. Rhododendron, azalea, mountain ash, pine, spruce, cedar, fir, crab apple, holly, magnolia, camellia and Japanese maple are but a few of the varieties at the Arboretum, which is also home to 139 plants on the endangered species list.

*Within a 20-minute drive of the Hotel*

Woodland Park Zoo:

- The Woodland Park Zoo is considered one of the best zoos in the world and consistently wins awards for its innovative exhibits. The 92-acre (37-hectare) zoo is divided into climate zones recreating habitats from around the world, from tropic rainforests to the far north, and features more than 1,090 animals representing nearly 300 species.

*Within a 30-minute drive of the Hotel*

The Museum of Flight:

- The Museum of Flight houses displays highlighting the greatest moments of aviation history, including 50 planes, the story of Boeing, America's first presidential jet and much more.

*Within a 45-minute drive of the Hotel*

Snoqualmie Falls:

- A scenic drive through the Cascade Mountains brings you to Snoqualmie Falls, a spectacular waterfall that drops 268 feet (82 metres) to the canyon below. In the nearby town of Issaquah are Boehm's Candy Kitchen and Gilman Village. You can visit gift shops and clothiers or stop for lunch at one of the area's quaint eateries.

*Within a 1-hour drive of the Hotel*

White River Amphitheatre:

- This outdoor music venue is located in Auburn, Washington, just an hour's drive from Seattle and hosts major concerts and live entertainment events.

*Within a 2-hour drive of the Hotel*

Mount Rainier National Park:

- Mount Rainier National Park encompasses 235,625 acres (95,354 hectares), ranging in elevation from 1,610 to 14,410 feet (490 to 4,390 metres) above sea level. The mountain is an active volcano encased in snow and ice and surrounded by old-growth forest and stunning wildflower meadows. The park offers scenic drives, challenging hikes, mountain climbing and historic architecture.

Mount Rainier National Park is southeast of Seattle and requires a full day to explore. May through September are the best months to visit. They are also the busiest months, so it is best to visit on a weekday. For additional information, reservations or tour information, please contact the Concierge.

*Within a 3-hour drive of the Hotel*

Olympic Peninsula and Olympic National Park:

- On Washington's Olympic Peninsula, you can explore rare rainforests, old-growth forests, rugged ocean beaches and logging towns. The diverse peninsula features four forest ecosystems, as well as ocean beaches and hot mineral springs. Notable towns include Port Townsend and Port Angeles. Olympic National Park encompasses 922,651 acres (373,400 hectares) of the Olympic Peninsula and offers glacier-capped mountains, 60 miles (97 kilometres) of rugged Pacific coastline, old-growth forests and temperate rainforests. Areas of particular interest include Hurricane Ridge and the Hoh Rainforest.

You can explore Port Angeles and Hurricane Ridge as a day trip, but spending one or two nights is ideal to fully explore the peninsula. Accommodations should be booked well in advance. Please contact the Concierge for assistance with arranging accommodations and for additional information.

*Within a 35-minute boat ride of the Hotel*

Bainbridge Island:

- Charming and rustic Bainbridge Island has a small arts community and trendy cafés. The ferry ride to the island is a 35-minute trip offering views of Seattle and Puget

Sound.

*Within a 45-minute plane ride of the Hotel*

San Juan Islands:

- The San Juan Islands are a group of 174 islands ranging from small rocky outcrops to the four large, lush islands of San Juan, Orcas, Lopez and Shaw. The natural beauty and relaxed pace of the islands draw locals and visitors alike. Activities include beach walks, kayaking, whale watching (from mid summer to early fall), hiking and biking.

The islands can be reached by car ferry, the Victoria Clipper passenger-only boat or Kenmore Air Floatplanes. As the islands are a very popular destination, booking accommodations in advance is necessary if you wish to spend more than a day. Please contact the Concierge for more information or for assistance with reservations.

*Within a 50-minute plane ride of the Hotel*

Victoria, British Columbia:

- The city of Victoria, located on Vancouver Island, is the capital of the Canadian province of British Columbia. Whether you visit for the afternoon or for several days, you will find plenty to do and see. Victoria offers diverse options for cultural exploration, with influences from Native American history, 150 years of British colonial heritage and its own Chinatown. Popular sites include Butchart Gardens, the British Museum and whale watching (from mid summer to early fall).

To visit Victoria, United States citizens must have state-issued picture identification and a United States passport or a certified birth certificate. Guests from outside the United States must have a passport, and may also require a visa. Victoria can be reached by car ferry, the Victoria Clipper passenger-only boat or Kenmore Air Floatplanes. We recommend that you make your transportation and accommodation reservations well in advance. Please contact the Concierge for more information and for assistance in making arrangements.

---

CONFERENCE FACILITIES OVERVIEW

Total Space	982 m <sup>2</sup> 10,570 sq.ft.
Largest Ballroom	459 m <sup>2</sup> 4,490 sq.ft.
Meet and Feed (max. capacity)	200
Breakouts	4
Banquet (max. capacity)	330
Outdoor Banquet (max. capacity)	-
Private Dining (max. capacity)	16

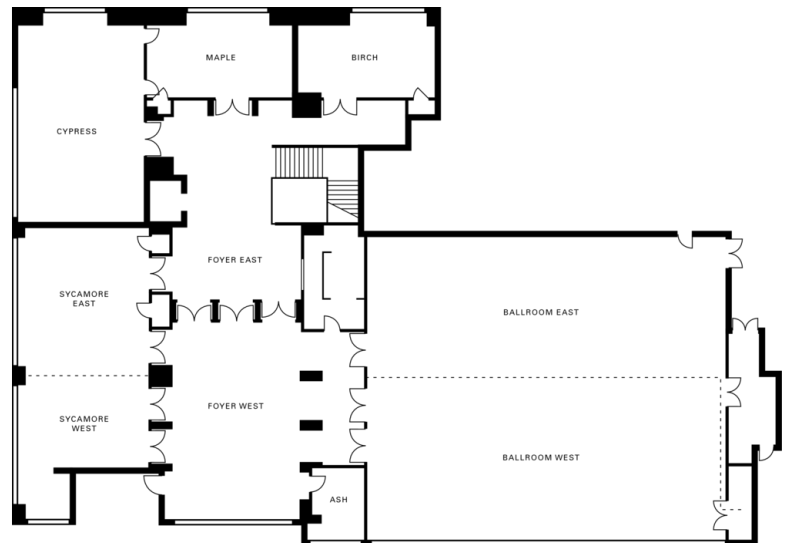
CONFERENCE FACILITIES

Four Seasons offers 10,570 square feet (982 square metres) of sleek, contemporary function spaces. Conveniently grouped on the second floor, all rooms feature natural light from large windows. State-of-the-art audiovisual equipment is enhanced by wired or wireless Internet access, while on-site technical experts ensure seamless performance.

With floor-to-ceiling views of Elliott Bay and Puget Sound, the Ballroom accommodates up to 500 guests under a soaring ceiling. For events with up to 140 guests, the Sycamore Room features panoramas of Elliott Bay and the city. Four other function rooms are flexible for groups of up to 100.

---

Second floor



---

TECHNICAL ASSISTANCE

- Lecterns with light and sound control
- Overhead projectors, LCD colour display panel, slide projectors and video players
- Stands, carts, easels, flipcharts, laser pointer
- Personal computers and peripherals
- On-site technician
- Wired or wireless Internet access

MUSIC AND ENTERTAINMENT

Our conference planners will be happy to assist with setting up any type of music or entertainment for your event.

RECEIVING AND MAINTENANCE

*Receiving*

Please contact the Receiving Department or your Conference Service Manager to make arrangements for deliveries.

*Post-conference shipping*

Shipping of post-conference materials may be coordinated through your Conference Services Manager.

*Maintenance*

The Engineering Department is available 24 hours a day for general assistance with lighting and room temperature control.

#### DESTINATION MANAGEMENT

Your Conference Services Manager can help accommodate your group's special requests. For detailed information, please contact the Hotel directly. In addition, we recommend the following destination management companies:

SH Worldwide  
1000 Dexter Avenue, Suite 502  
Seattle, WA, 98109  
1 (206) 623-2090

PRA Destination Management  
613 9th Avenue  
Seattle, WA, 98104  
1 (206) 352-9030

#### BUSINESS SERVICES

Around the clock, Four Seasons can assist you with business, entertainment or travel arrangements through the Business Center and our resourceful, multilingual Concierge.

- 24-hour business centre
- 24-hour business services
- Airline reservation service
- Audiovisual equipment
- Business equipment
- Cellular telephones
- Computers
- Express check-in/check-out
- International newspapers
- Japanese translation and interpretation service
- Laptops
- Meeting and function space
- Printing services
- Secretarial service
- Translation and interpretation service
- Video conferencing
- Wired or wireless Internet access in meeting rooms
- Worldwide courier service

#### SPOUSE PROGRAMMES

The Hotel offers a variety of activities of interest to spouses of meeting participants. Possibilities include:

- Exclusive on-site Spa with eight treatment rooms
- Fitness Center with infinity pool/whirlpool
- Wine tastings with the Hotel's sommelier
- Cooking demonstration with the Hotel's Executive Chef
- Seattle orientation with the Chef Concierge
- Personal shopper from Nordstrom
- Private VIP docent led tour of Seattle Art Museum

- Northwest winery tour
- Day trip to Victoria, British Columbia, Canada
- Snoqualmie Falls and Gilman Village shopping
- Pike Place Market tours with the Hotel's Executive Chef

#### CHILDRENS AND FAMILY PROGRAMMES

We would be pleased to arrange activities for visiting families. Possibilities include:

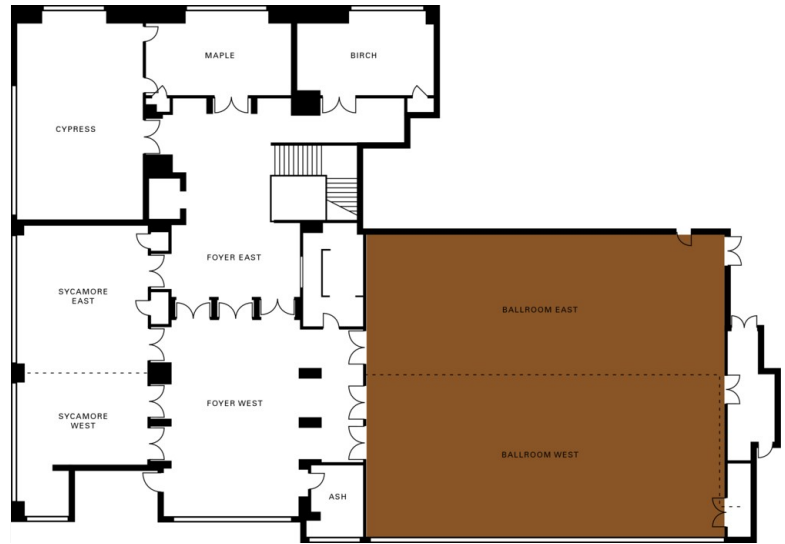
- Orca whale-watching in the San Juan Islands
- Hiram M. Chittenden Locks
- The Children's Museum at Seattle Center
- Seattle Children's Theater
- Boeing Everett Factory Tour
- Space Needle and Seattle Center
- Boating/kayaking on Lake Union
- Bicycle riding on Burke-Gilman Trail

**BALLROOM**

Dimensions 20 x 23 m  
65 x 76 ft  
Size 459 m<sup>2</sup>  
4,940 sq.ft.  
Height 5.5 m  
18 ft

*Capacities*

Classroom 220  
Hollow square 60  
U Shape 55  
Theatre 450  
Reception 500  
Banquet Rounds 340

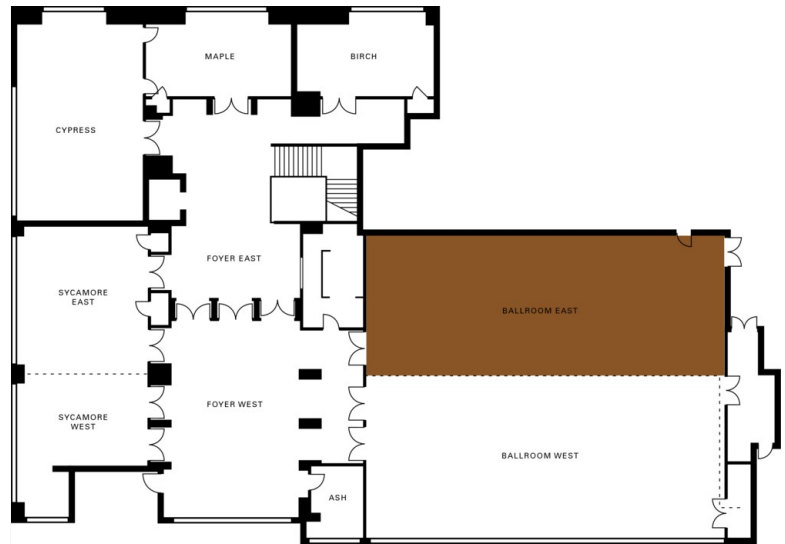


**BALLROOM EAST**

Dimensions 9 x 23 m  
30 x 76 ft  
Size 212 m<sup>2</sup>  
2,280 sq.ft.  
Height 5.5 m  
18 ft

*Capacities*

Classroom 220  
Hollow square 40  
U Shape 35  
Theatre 450  
Reception 500  
Banquet Rounds 340

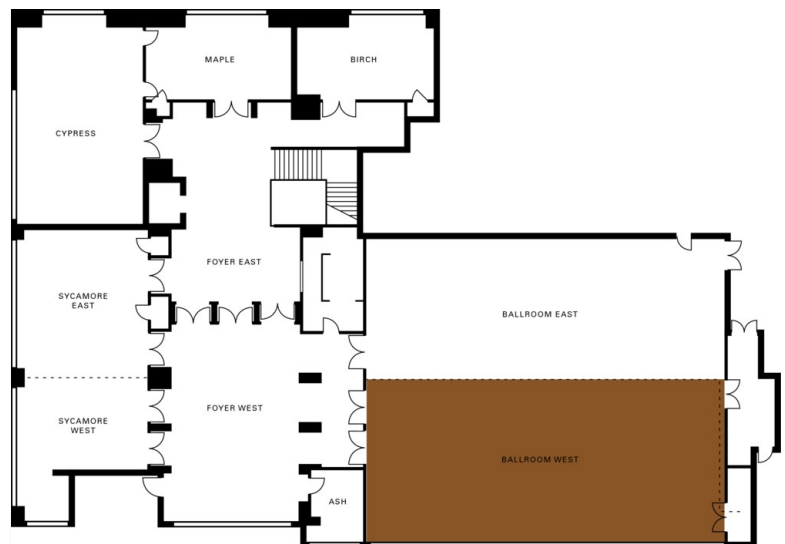


**BALLROOM WEST**

Dimensions 11 x 23 m  
35 x 76 ft  
Size 247 m<sup>2</sup>  
2,660 sq.ft.  
Height 5.5 m  
18 ft

*Capacities*

Classroom 80  
Hollow square 60  
U Shape 45  
Theatre 210  
Reception 260  
Banquet Rounds 160

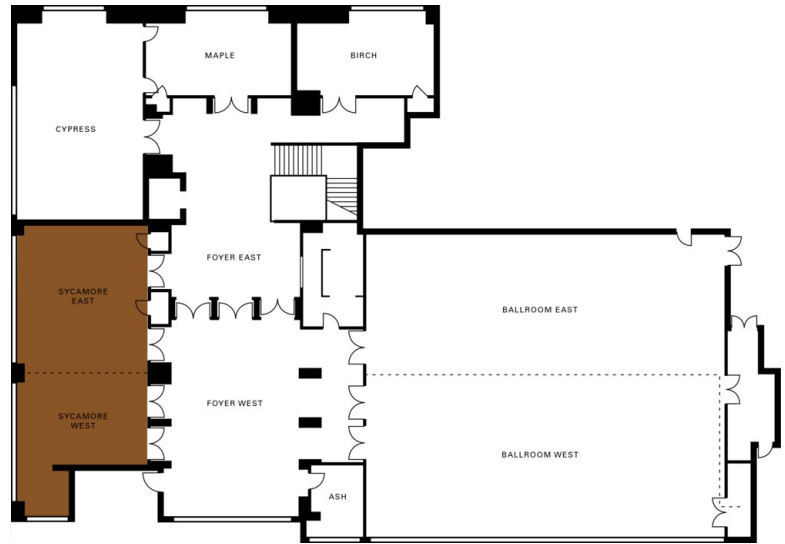


**SYCAMORE ROOM**

Dimensions	15 x 8.5 m
	50 x 28 ft
Size	130 m <sup>2</sup>
	1,400 sq.ft.
Height	3.3 m
	11 ft

*Capacities*

Classroom	72
Hollow square	42
U Shape	30
Theatre	125
Reception	140
Banquet Rounds	90

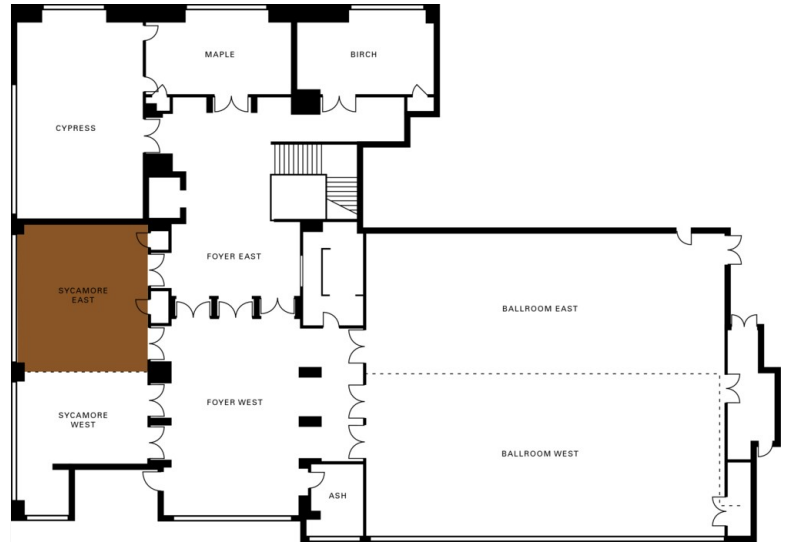


**SYCAMORE EAST**

Dimensions	9 x 8.5 m
	30 x 28 ft
Size	78 m <sup>2</sup>
	840 sq.ft.
Height	3.3 m
	11 ft

*Capacities*

Classroom	32
Hollow square	24
U Shape	18
Theatre	60
Reception	75
Banquet Rounds	50

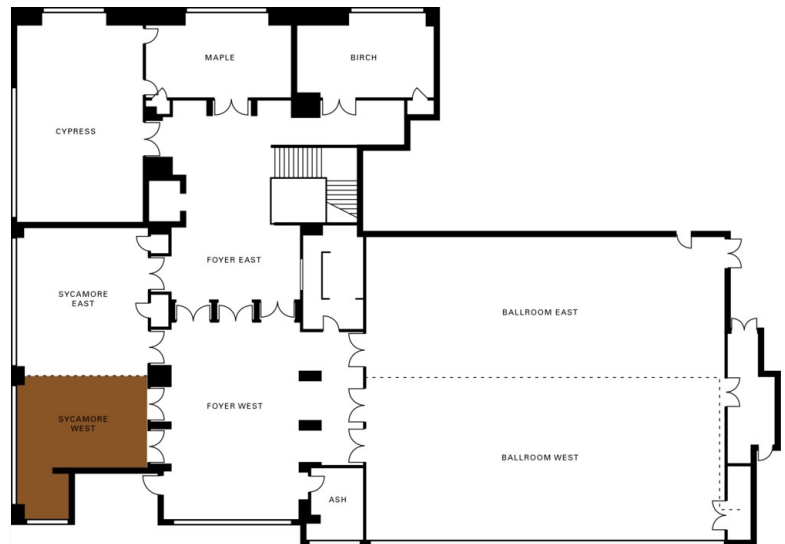


**SYCAMORE WEST**

Dimensions	6 x 8.5 m
	20 x 28 ft
Size	52 m <sup>2</sup>
	560 sq.ft.
Height	3.3 m
	11 ft

*Capacities*

Classroom	20
Hollow square	20
U Shape	16
Theatre	50
Reception	65
Banquet Rounds	30

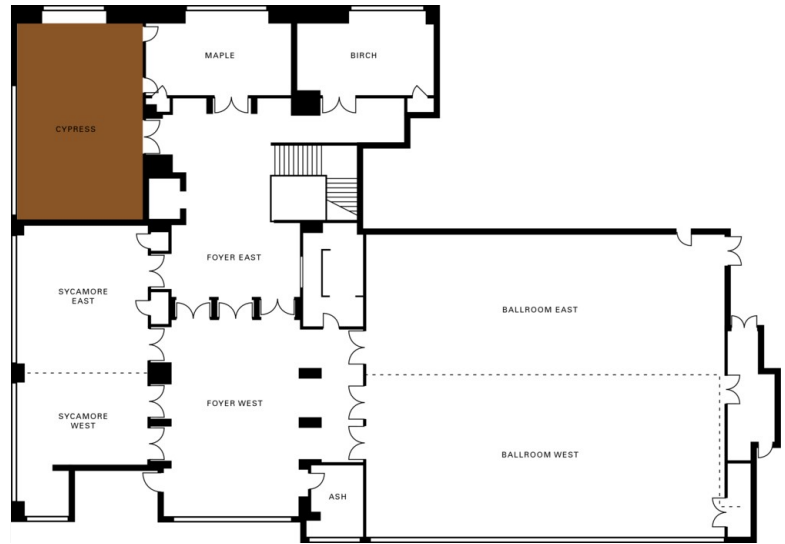


**CYPRESS ROOM**

Dimensions	12 x 8 m
	42 x 26 ft
Size	101 m <sup>2</sup>
	1,092 sq.ft.
Height	3.3 m
	11 ft

*Capacities*

Classroom	54
Hollow square	36
U Shape	30
Theatre	80
Reception	100
Banquet Rounds	70

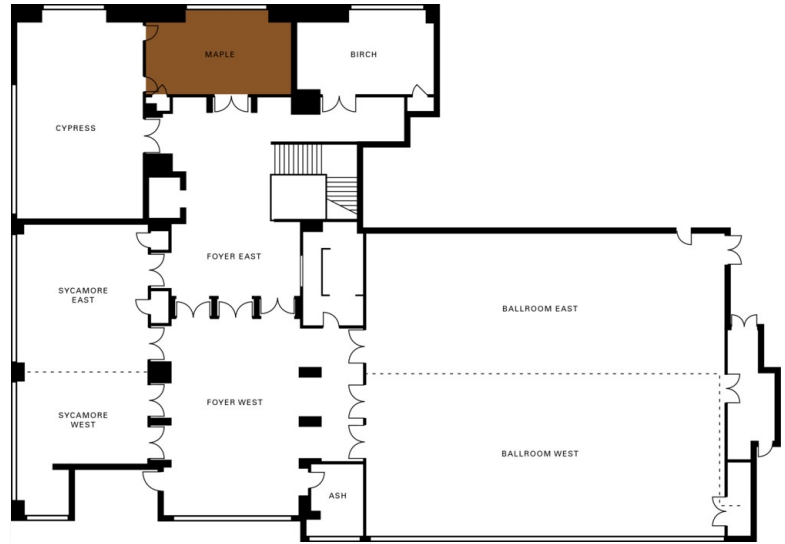


**MAPLE ROOM**

Dimensions	5 x 8 m
	16 x 30 ft
Size	45 m <sup>2</sup>
	480 sq.ft.
Height	3.3 m
	11 ft

*Capacities*

Classroom	20
Theatre	30
Reception	35
Banquet Rounds	20
Boardroom	16

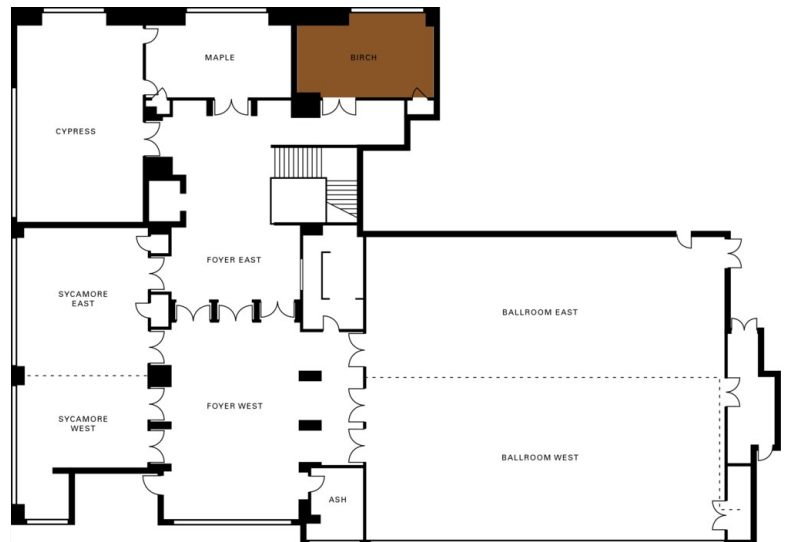


**BIRCH ROOM**

Dimensions	5 x 8 m
	16 x 26 ft
Size	39 m <sup>2</sup>
	416 sq.ft.
Height	3.3 m
	11 ft

*Capacities*

Classroom	20
Theatre	30
Reception	25
Banquet Rounds	20
Boardroom	16

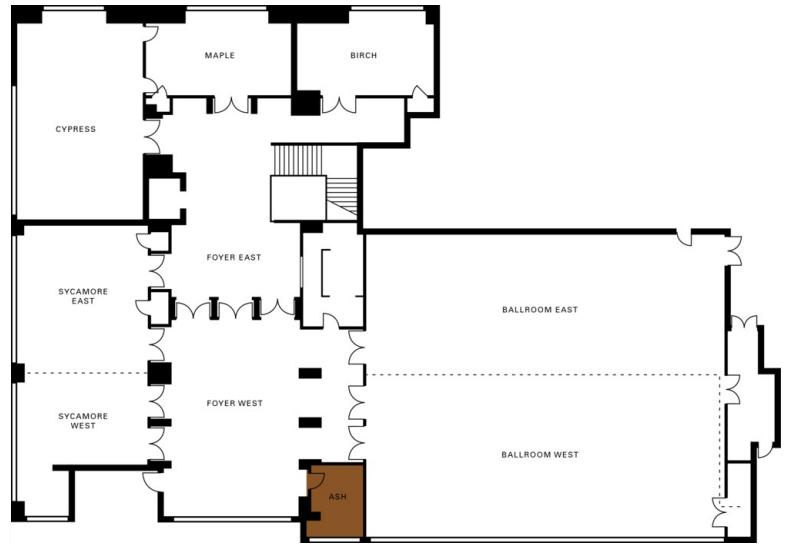


**ASH ROOM**

Dimensions 5 x 3.3 m  
16 x 11 ft  
Size 16 m<sup>2</sup>  
176 sq.ft.  
Height 3.6 m  
12 ft

*Capacities*

Banquet Rounds 6



### GUEST ROOMS, SUITES AND PRIVATE RESIDENCES OVERVIEW

Positioned on the first 10 floors of a 21-storey hotel and residential tower, Four Seasons Hotel Seattle offers 147 spacious guest rooms, including 13 suites. The interior décor is bright and airy, with a clean, contemporary look and soft, natural hues. Light woods are used throughout, displaying intricate detail with Asian-inspired millwork fitting together like a Japanese box. Reflecting the Hotel's appreciation of local art, guest rooms display a selection of 16 works by classic Northwest artists, reproduced from the collection of the Seattle Art Museum.

Custom ergonomic furniture creates comfortable and productive work spaces, including an elliptical desk, two chairs, dual-line speakerphone and high-speed wired/wireless Internet access. A lounge chair provides a relaxing spot to lie back and watch the 42-inch (107-centimetre) plasma television. The marble bathroom includes a deep-soaking tub, glass-enclosed rain shower, separate WC and vanity mirror with an integrated television.

Room Category	#	Beds	Size (m <sup>2</sup> )	Size (sq ft)	View
- Deluxe Bay-View Room	34	1 King or 2 double	44 - 60	470 - 660	Elliott Bay, Puget Sound and the Olympic Mountains
- Partial Bay-View Room	45	1 King or 2 double	42 - 44	450 - 475	Courtyard, or city views with partial view of Elliott Bay and Puget Sound
- City-View Room	55	1 King or 2 double	42 - 52	449 - 561	Seattle Art Museum or city
- Accessible Deluxe Bay-View Room		1 King or 2 double	44-83	469 - 889	Elliott Bay, Puget Sound, and the Olympic Mountains
- Accessible City-View Room		1 King	42 - 52	449 - 561	Seattle Art Museum or city
- Hearing Accessible City-View Room		1 King	42 - 52	449 - 561	Seattle Art Museum or city
- Presidential Suite	1	1 King	230	2,480	Elliott Bay, Puget Sound, and Olympic Mountains
- Governor's Suite	1	1 King	125	1,349	Elliott Bay and Puget Sound
- Deluxe Elliott Bay Suite	5	1 King	111	1,190	Elliott Bay and Puget Sound
- Corner Elliott Bay Suite	6	1 King	74	795	Elliott Bay and Puget Sound
- Accessible Deluxe Elliott Bay Suite		1 King	111	1,190	Elliott Bay and Puget Sound

#### Guest Room Overview

Among the most spacious guest rooms in Seattle, featuring views of city streetscapes, Olympic Mountain peaks and partial views of the water. City-View Rooms overlook the Seattle Art Museum and city streets, while Bay-View Rooms present partial water vistas and overlook the fourth-floor rooftop terrace with its swimming pool and open fireplace.

#### Suites Overview

Four Seasons Hotel Seattle includes a collection of 13 suites – all with soaring views across Elliott Bay and Puget Sound. Corner Elliott Bay Suites provide added comfort and privacy for work or entertaining – with the bedroom separated from the living area. Deluxe Elliott Bay Suites include a living room with fireplace, along with a small dining

room for four guests. Making a grand impression on the ninth floor, the one-bedroom Governor's Suite features a double-sided fireplace in the custom-furnished living room and a spacious dining room for six. On the Hotel's top floor, the one-bedroom Presidential Suite includes a spacious living room with custom furnishings, original artwork and a built-in fireplace. Additional amenities include a formal dining room for 10, a butler's pantry, gaming table, private study and a dressing area in the master bedroom.

**CORNER ELLIOTT BAY SUITE**

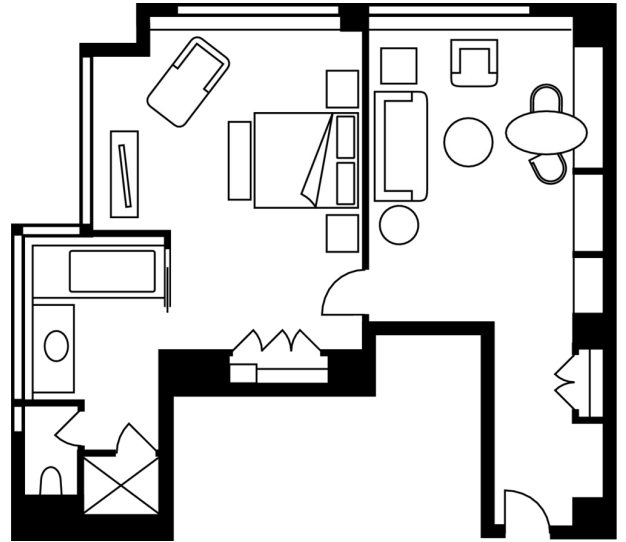
Number 6  
Beds King bed  
Size 74 m<sup>2</sup>  
795 sq ft

*Location*

4th to 10th floor, except 9th floor

*View*

Elliott Bay and Puget Sound



**DELUXE BAY-VIEW ROOM**

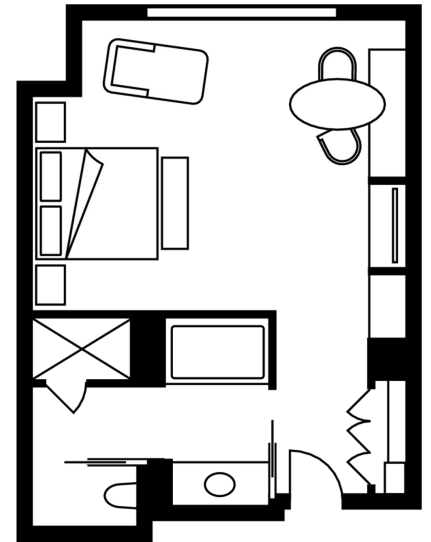
Number 34  
Beds King or two double beds  
Size 44 - 60 m<sup>2</sup>  
470 - 660 sq ft

*Location*

3rd to 10th floor

*View*

Elliott Bay, Puget Sound and the  
Olympic Mountains



**PARTIAL BAY-VIEW ROOM**

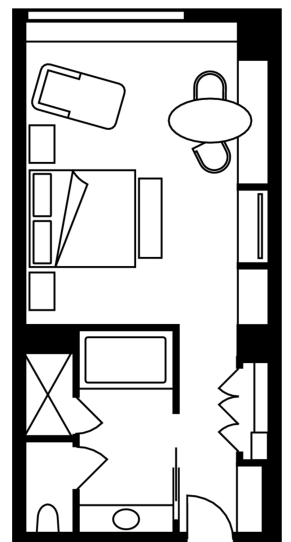
Number 45  
Beds King bed or two double  
beds  
Size 42 - 44 m<sup>2</sup>  
450 - 475 sq ft

*Location*

3rd to 10th floor

*View*

Courtyard, or city views with partial  
view of Elliott Bay and Puget Sound



**CITY-VIEW ROOM**

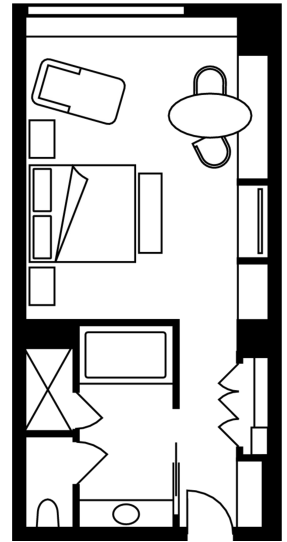
Number 55  
Beds King or two double beds  
Size 42 - 52 m<sup>2</sup>  
449 - 561 sq ft

*Location*

3rd to 10th floor

*View*

Seattle Art Museum or city



**PRESIDENTIAL SUITE**

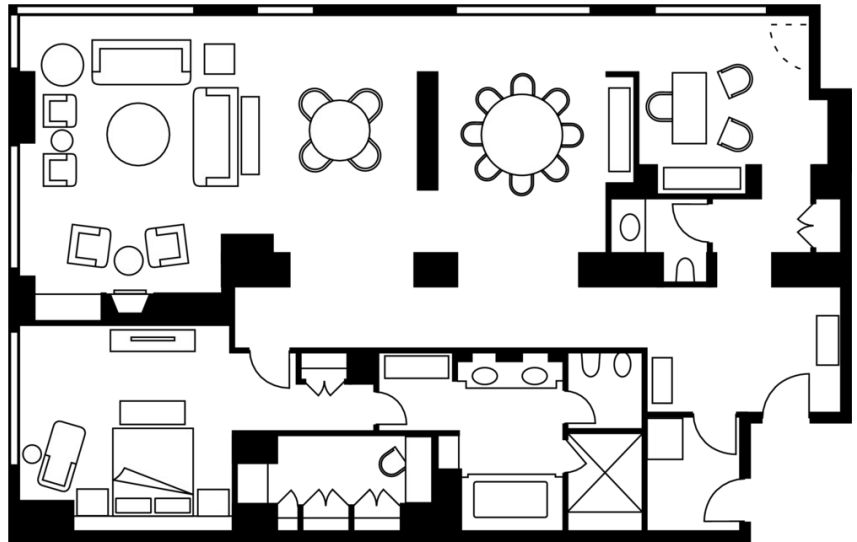
Number 1  
Beds King bed  
Size 230 m<sup>2</sup>  
2,480 sq ft

*Location*

10th floor

*View*

Elliott Bay, Puget Sound, and Olympic Mountains



**GOVERNOR'S SUITE**

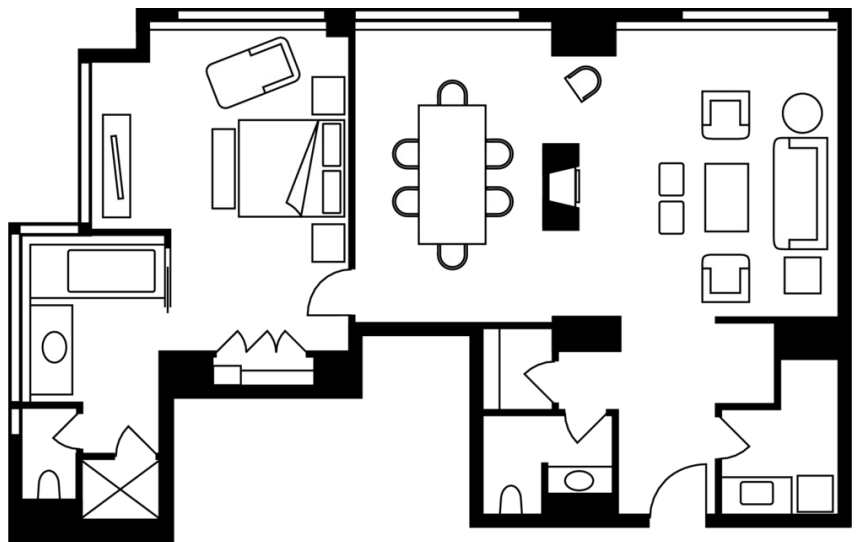
Number 1  
Beds One king bed  
Size 125 m<sup>2</sup>  
1,349 sq ft

*Location*

9th floor

*View*

Elliott Bay and Puget Sound



DELUXE ELLIOTT BAY SUITE

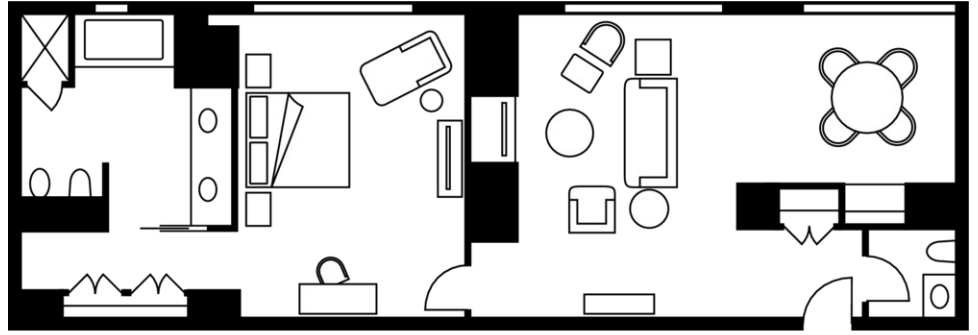
Number 5  
Beds King bed  
Size 111 m<sup>2</sup>  
1,190 sq ft

Location

5th to 9th floor

View

Elliott Bay and Puget Sound



#### AMENITIES

- Alarm clock
- All news cable network
- Bedside outlet for recharging mobile telephones
- Cable television
- CD clock radio
- Complimentary newspaper
- Connection for MP3 players
- Down duvets
- Down pillows
- DVD player
- Fax machine on request
- Flashlight(s)
- Hair dryer
- Hearing impaired kit
- Humidifier and air ioniser on request
- Hypo-allergenic bedding on request
- In-room movies
- In-room safe suitable for a laptop computer
- iPod docking station
- Iron and ironing board
- Laptop on request
- Lighted make-up/shaving mirror
- Mini refrigerator on request
- Multi-line cordless telephone(s)
- Multi-line telephone(s) with voicemail
- Orthopaedic pillows on request
- Plasma/LCD screen television
- Printer on request
- Refrigerated private bar
- Silk padded hangers
- Slippers
- Thick terry bathrobes
- Twice-daily housekeeping service with evening ice delivery
- Visually impaired kit
- Wired or wireless Internet access

#### GUEST SERVICES

- 24-hour In-Room Dining
- 24-hour laundry/dry-cleaning/pressing
- 24-hour multilingual Concierge
- Adaptors and transformers on request
- Airport transfers
- Automatic teller machine
- Babysitting service
- Car rental desk
- CD/DVD library
- Complimentary local newspapers
- Complimentary overnight shoeshine
- In-house florist

- Limousine service
- Non-smoking rooms
- One-hour pressing
- Services and amenities for younger guests
- Umbrellas
- Valet parking

---

---

DINING HOURS OF OPERATION

---

*ART Restaurant*

*Breakfast*

Every day 6:30 am - 11:00 am

*Lunch*

Every day 11:00 am - 2:00 pm

*Dinner*

Every day 5:00 pm - 10:00 pm

---

*ART Lounge*

Every day 11:00 am - midnight

*Happy hour*

Every day 5:00 pm - 7:00 pm

---

*In-Room Dining*

*Breakfast*

Every day 6:00 am - 11:00 am

*All day*

Every day 11:00 am - 11:00 pm

*Overnight*

Every day 11:00 pm - 6:00 am

---

DINING

Dining at Four Seasons Hotel Seattle celebrates authentic Pacific Northwest cuisine with modern American flair. The chef follows the Best Source philosophy – seeking out locally produced ingredients and working with organic growers, foragers and independent specialists. Creative, ever-changing menus are presented in the Hotel's signature venue, ART Restaurant and Lounge.

RESTAURANTS

*ART Restaurant*

Inspired by the Hotel's collection of works by the Northwest's foremost contemporary artists, its proximity to the Seattle Art Museum and our chef's creative flair, ART Restaurant and Lounge celebrates authentic Pacific Northwest cuisine with unique global influences.

- Cuisine: Pacific Northwest
- Special features: Private dining room seats 16
- Indoor seating: 72

LOUNGES

*ART Lounge*

ART's dynamic lounge offers cocktails and light fare. Flowing seamlessly and sharing the same sweeping water views with the main dining room and counter, the lounge is perfect for enjoying a morning latte or a chic evening cocktail.

- Cuisine: Cocktails
- Indoor seating: 42

## RECREATION FACILITIES

Four Seasons creates an escape in the city with an array of recreation facilities – connecting to Pacific Northwest character with nature-inspired design and views across Elliott Bay and Puget Sound.

### SPA SERVICES

Surrender to innate purity in the Spa at Four Seasons. The expansive facility embodies the natural elements of the coastal region of Puget Sound. Providing an oasis from the hustle and bustle of downtown, the Spa's soothing décor combines water, basalt rock and glass tile in an urban interpretation of the Northwest's rugged natural beauty. The Spa's signature and restorative spa rituals represent the best of the ancient healing practices from various cultures to provide key therapeutic benefits for our guests.

- Size: 557 m<sup>2</sup> / 6,000 sq ft
- Number of treatment rooms: 8
- Products: Skinceuticals, Amala

### FITNESS FACILITIES

Overlooking the pool and outdoor fireplace, with views of Elliott Bay, the sophisticated and modern Fitness Center offers state-of-the-art TechnoGym equipment. Each cardio machine caters to individual workout programmes and features an interactive entertainment system. Guests can watch television, control their iPod or listen to the radio while built-in computers guide them through each exercise.

### POOL

The pool terrace brings together the enchanting elements of the Pacific Northwest. Lush Zen-garden landscapes surround the infinity pool, which appears to flow directly into the sparkling waters of Elliott Bay. At the bottom of the pool, multidimensional lighting recreates the night sky.

### GOLF

#### *The Golf Club at Newcastle*

Situated on 350 acres (142 hectares) of land and with panoramic views of Mount Rainier, the Olympic Mountains and the Cascade Mountains, The Golf Club at Newcastle offers two 18-hole public courses (Coal Creek and China Creek), extensive practice facilities and a 44,000-square-foot (4,088-square-metre) clubhouse.

### TENNIS

#### *Amy Yee Tennis Center*

The Amy Yee Tennis Center features 10 indoor and 4 outdoor hard courts that are available for year-round play. The Center also offers private lessons and classes.

### JOGGING

An excellent jogging route runs north from the Hotel along the picturesque coastline. From the Hotel to the Olympic Sculpture Garden and back is approximately 2 miles (3.2 kilometres). Upon leaving the front door of the property, take the stairs down to the waterfront; maps are available from the Concierge.

Rooms	Dimensions		Size		Height		Classroom	Hollow square	U-shape	Theatre	Reception	Banquet rounds	Conference/boardroom
	(m)	(ft)	(m <sup>2</sup> )	(sq ft)	(m)	(ft)							
- Ballroom	20 x 23	65 x 76	459	4,940	5.5	18	220	60	55	450	500	340	-
- Ballroom East	9 x 23	30 x 76	212	2,280	5.5	18	220	40	35	450	500	340	-
- Ballroom West	11 x 23	35 x 76	247	2,660	5.5	18	80	60	45	210	260	160	-
- Sycamore Room	15 x 8.5	50 x 28	130	1,400	3.3	11	72	42	30	125	140	90	30
- Sycamore East	9 x 8.5	30 x 28	78	840	3.3	11	32	24	18	60	75	50	18
- Sycamore West	6 x 8.5	20 x 28	52	560	3.3	11	20	20	16	50	65	30	14
- Cypress Room	12 x 8	42 x 26	101	1,092	3.3	11	54	36	30	80	100	70	24
- Maple Room	5 x 8	16 x 30	45	480	3.3	11	20	-	-	30	35	20	16
- Birch Room	5 x 8	16 x 26	39	416	3.3	11	20	-	-	30	25	20	16
- Ash Room	5 x 3.3	16 x 11	16	176	3.6	12	-	-	-	-	-	6	-