



## Quick Reference Guide

---

Last updated May 3, 2012 | For additional information please contact the hotel directly

---

Four Seasons Hotel Prague  
Veleslavínova 2a/1098, Praha 1, 110 00, Czech Republic  
Tel 420.221.427.000 | Fax 420.221.426.000 | Res 420.221.427.777

[www.fourseasons.com/prague](http://www.fourseasons.com/prague)



On the banks of the celebrated Vltava River, Four Seasons interweaves centuries of architecture with highly personalised service and tomorrow's technology, all within the exceptional historic, cultural and economic heart of this most elegant of cities.

Vešelavínova 2a/1098  
Praha 1 110 00, Czech Republic  
Tel 420.221.427.000  
Fax 420.221.426.000  
Res 420.221.427.777

#### AIRPORT

- Ruzyně International Airport (PRG):  
25 minutes (15 kilometres/9 miles)

#### TABLE OF CONTENTS

- 2 *Introduction*
- 4 *Destination*
- 10 *Conference Facilities*
- 17 *Guest rooms, Suites and Private Residences*
- 23 *Dining*
- 24 *Recreational Facilities*
- 26 *Incentive Activities*
- 28 *Appendix: Conference Chart*



Four Seasons Hotel Prague is steps from stunning churches, museums, concert halls and shops, amidst the storybook streetscapes of the city's Old Town. The contemporary Main Building unites three historic edifices – the Classical, Renaissance and 18th-century Baroque Buildings – into one architecturally unique structure. In this magnificent riverside setting, the 161 guest rooms, including 20 suites, are some of the largest in the city.

Many guest rooms – as well as the acclaimed Allegro Restaurant – feature picturesque views of the Charles Bridge and across the river to Prague Castle. The health club allows guests to feel fit and relaxed. Our multilingual Concierge is ready around the clock, to exchange currency or arrange a tour of the Bohemian countryside.

Within the city's finest facilities for business and social occasions, resourceful Four Seasons service ensures that gatherings unfold with satisfying precision and flair.

#### TRANSPORTATION

Only 25 minutes from the Hotel, Ruzyně International Airport is serviced by Czech Airlines, Air France, Alitalia, KLM, Austrian Airlines, Swiss, Finnair, British Midland, British Airways, Lufthansa, SAS, Malev, Aeroflot and Pulkovo. Rental cars and limousines are available.

The main railway station is 10 minutes from the Hotel.

#### Airport greeting service

Four Seasons offers services to make your arrival in and departure from Prague more enjoyable.

Arrival service includes the following:

- A Four Seasons greeter will meet you at your gate and escort you to the VIP lounge.
- Relax in the VIP lounge and enjoy complimentary soft drinks while your passport and customs work is finalised and your luggage is collected.
- Travel via private car to Four Seasons Hotel Prague.

Departure service includes the following:

- Travel from the Hotel via private car to a separate VIP entrance at Ruzyně International Airport.
  - Relax in the VIP lounge until boarding time while your passport and luggage are cleared for departure.
  - Be escorted through VIP security screening and enjoy a private transfer to your plane.
- For more information or to book this service, please contact the Hotel; fees may apply.

---

---

## WEATHER CHART

---

Month	°C		°F	
	Highs/Lows	Highs/Lows	Highs/Lows	Highs/Lows
January	1	/ -4	34	/ 24
February	2	/ -3	36	/ 25
March	7	/ 0	46	/ 32
April	12	/ 2	54	/ 36
May	17	/ 7	64	/ 45
June	20	/ 10	69	/ 51
July	22	/ 12	72	/ 54
August	22	/ 11	72	/ 53
September	18	/ 8	65	/ 48
October	12	/ 3	54	/ 39
November	5	/ 0	41	/ 32
December	2	/ -2	36	/ 28

---

## DESTINATION

At the crossroads of centuries-old trade routes, and now the cultural and economic centre of the Czech Republic, Prague is an art-filled jewel in the heart of Europe. Alive with music and culture, it offers elegant riverside promenades, breathtaking architecture and café-lined squares.

One of the most beautiful and visited cities of Europe, this capital of 1.2 million has an incredible mix of Gothic, Romanesque, Baroque and Art Nouveau architecture. The Vltava River winds through this “city of a hundred spires,” its riverbanks and the surrounding hills contrasting with the winding cobblestone streets of the old city centre.

Prague is lively and sophisticated, drawing on its centuries-old tradition of breakthrough thinking in literature, music, architecture and engineering.

## WEATHER

Located in northern Central Europe, Prague’s contrasting seasons paint a picture in this romantic city, year round. A temperate and fairly dry spring sets the scene for sunny, warm summer days and cool nights. Winter months are cooler with temperatures just above freezing as the four seasons come full circle.

## LOCAL ATTRACTIONS AND ACTIVITIES

At Four Seasons, you enjoy a unique vantage point from which to explore the sights, sounds and experiences around you. We hope the highlights of local attractions below help simplify your planning. Please let us know how else we can assist you.

### *Within a 5-minute walk of the Hotel*

#### Smetana Museum:

- On a spit of land beside the Vltava, a former Neo-Renaissance water-works has been turned into a memorial to Bedrich Smetana, the father of Czech music. The museum contains documents, letters, scores and musical instruments detailing the composer's life and work. Smetana was a fervent patriot and his music helped inspire the Czech national revival. The museum is in Novotného lavka Street in the Old Town.

#### The Old Town Square:

- The Old Town Square, Staroměstské náměstí, has been the centre of Prague since the 10th century. Buildings with pastel neo-Renaissance façades as well as the Old Town Hall and two cathedrals surround the square. The imposing early-Gothic-style Church of Our Lady before Týn was built in the 1700s. St. Nicholas Church, a baroque cathedral with a wedding-cake façade, was built in the 1700s.

#### The Old Town Hall:

- The Old Town Hall has an extraordinary astronomical clock in its tower, built in the early 1400s – when Prague was one of the largest and most prosperous cities in Europe. The clock is designed to tell time as well as chart the motion of celestial bodies. The top of the tower offers a sweeping view of the city.

#### Josefov, the Old Jewish Quarter:

- Josefov, the Old Jewish Quarter, includes the Jewish Museum (Židovské Museum) as well as seven synagogues. The Gothic Old-New Synagogue, one of the oldest Jewish

temples in Europe, is still used for religious services. This complex houses the world's largest collection of Jewish artifacts.

The Rudolfinum:

- The Rudolfinum, now home of the Czech Philharmonic Orchestra, is an outstanding example of Czech neo-Renaissance style. The curving balustrade is decorated with statues of distinguished Czech, Austrian and German composers and artists. Many of the major concerts of the Prague Spring Music Festival are held here.

The Charles Bridge:

- The Charles Bridge connects the Old Town with the Lesser Quarter (Malá Strana). The defence towers on either end of the 600-year-old bridge offer a view of the city from above. Lining either side of the pedestrians-only bridge are the statues of 30 saints.

*Within a 10-minute walk of the Hotel*

Mozart Museum:

- Though slightly off the beaten track, the museum is well signposted because of Prague's reverence for Mozart. Bertramka is a 17th century farmhouse, enlarged in the second half of the 18th century to convert it into a comfortable suburban villa. Mozart and his wife Constanze stayed here as guests of the composer Frantisek Dusek and his wife Josefina in 1787, when Mozart was working on Don Giovanni. The villa is best visited in the late afternoon when it is at its most tranquil. During summer recitals take place on the terrace. The Museum is located in the Little Quarter (Malá Strana) in Mozartova Street 169.

The National Theatre:

- The opulent National Theatre built in the 19th century in the Neo-Renaissance fashion, is a symbol of the revival of the Czech national identity. It was built to nurture the Czech National Revival Movement, a drive to replace the dominant German culture with home-grown Czech works.

The Estates Theatre:

- The Estates Theatre (Stavovské divadlo) is one of the finest examples of Neo-Classical elegance in Prague. It is a Mecca for Mozart fans. In 1787 Mozart's opera, Don Giovanni had its debut here with Mozart at the piano conducting the orchestra.

*Within a 15-minute walk of the Hotel*

Reduta Theatre/Black Theatre:

- Frantisek Kratochvil, a man of many talents and professions - sculptor, painter and graphic artist, actor, film director and clown - is best known for his theatre work. He has enriched the Czech theatre by bringing painting on the stage. He uses this unique form of expression to tell stories from his life, to talk about his observations and opinions, and to make people think. There are no language barriers in these kinds of performances.

Wenceslas Square :

- Wenceslas Square is Prague's equivalent of the Champs Elysées. Visitors look for world-renowned Bohemian crystal amongst its multitude of shops. The National

Museum dominates one end of the square. This vast neo-Renaissance building offers permanent and temporary exhibits of mineralogical, paleontological and zoological collections.

Municipal House (Obecní Dum) :

- The Municipal House (Obecní Dum) is one of the best venues for classical music in Prague. Built at the beginning of the 20th century, it has excellent acoustics and is filled with local art.

*Within a 20-minute walk of the Hotel*

Mucha Museum:

- Opened in 1998, it is the unique museum dedicated to the famous Art Nouveau painter Alfons Mucha, showing a comprehensive cross-section of his work. The Museum is located in Panska Street in the Old Town.

Prague Museum:

- The collection records the history of Prague from primeval times. Its Renaissance facade is rich with stucco and sculptures, and the interior walls are painted with historic views of the city. On display are examples of Prague china and furniture, relics of the medieval guilds and paintings of Prague through the ages. The Museum is located in Na Poríčí 1554 in the Old Town (Staré Město).

Prague Castle:

- Prague Castle, the largest ancient castle in the world, sits on the highest hill in the city. Its courtyards, gardens and cafés make for a fascinating visit. The gigantic St. Vitus Cathedral, part of the castle, towers over the city and took 600 years to build. The cathedral has seen the coronation of more than 30 Bohemian monarchs, many of whom are buried here. The crown jewels of the Bohemian kings and relics of St. Wenceslas, the 10th century Duke of Bohemia, are on display. Visitors can admire the marvellous murals, statues, ceiling frescoes and stained glass.

Old Royal Palace:

- The Old Royal Palace, also part of Prague Castle, has been the home of Bohemian kings since the 13th century. Today it is the official residence of the Czech president.

Restaurants and Bars:

- Since the 1989 Velvet Revolution, many restaurants, bars and clubs have opened. The spectrum for entertainment ranges from high quality luxury restaurants to all kinds of ethnic restaurants, popular beer pubs offering famous Czech-brewed products, as well as a sampling of traditional cuisine. Bars, jazz clubs and discos offer a varied night life.

*Within a 10-minute drive of the Hotel*

The National Museum:

- A more dominant site could hardly have been found for the National Museum; its architecture, an overpowering monument to 19th century Czech nationalism with its equally grand interior. A setting for extensive archaeological, natural, historical and cultural collections. Located at one end of Wenceslas Square, this vast Neo-Renaissance building was completed in 1890.

Dvorák Museum:

- One of the most enchanting secular buildings of the Prague Baroque, this red and ochre villa now houses the Antonín Dvorák Museum. On display are Dvorák scores and editions of his works, plus photographs and memorabilia of the great 19th century Czech composer, including his piano, his viola and his desk. The location of this Museum is in the New Town (Nové Mesto) in Ke Karlovu Street 20.

National Technical Museum:

- Though it tries to keep abreast of all scientific developments, the museum's strength is in its collection of machines from the Industrial Revolution to the present day, the largest of its kind in Europe. The section that attracts the most visitors is the History of Transportation in the vast central hall. This is filled with locomotives, railway carriages, bicycles, veteran motorcars and motorcycles, with aeroplanes and a hot-air ballon suspended overhead. The Photography and Cinematography section is well worth a visit, as is the collection of astronomical instruments. A little bit outside of the city center, in Holesovice in Kostelni street, Prague 7, is the location of the National Technical Museum.

*Note: The Museum is temporarily closed due to construction.*

The State Opera :

- In 1885 the New Town Theatre was pulled down to make way for the present building. Originally it was known as the New German Theatre, built to rival the Czech National Theatre. In 1945 the theatre became the city's main opera house under the name of State Opera.

DOX Centre for Contemporary Art:

- This living arts centre exhibits Czech and international contemporary art.

*Within a 30-minute drive of the Hotel*

Lidice:

- The foundations of several buildings are all that is left of Lidice, the town that Hitler razed in revenge for the assassination of Reinhard Heydrich. The Lidice Memorial Museum documents the fate of the inhabitants.

*Within a 45-minute drive of the Hotel*

Karlstejn Castle and Golf Course:

- Karlstejn Castle and Golf Course is the most popular attraction in the Czech Republic after Prague itself. This medieval castle sits on a hill and is surrounded by forests. Across the river on another hill is a championship golf course with fine views of the castle.

Nelahozeves Castle:

- The town of Nelahozeves features the home of the famous Czech composer, Antonín Dvorák, as well as a Renaissance château built in the late 1500s. The château, which has been in the hands of the Lobkowitz family since 1623, is now home to one of the most magnificent family art collections in Europe (including works by Rubens, Veronese, Breughel the Elder, Cranach, Canaletto and Velasquez). Additional highlights include

musical instruments and manuscripts of Beethoven, Mozart, Gluck, Vranicky and others.

*Within a 1-hour drive of the Hotel*

Konopište :

- Konopište is a 17th-century castle and hunting lodge of the Habsburgs. In 1887 it became the property of Archduke Franz Ferdinand, and the interior still contains his furnishings and possessions.

Krivoklát:

- Krivoklát, a medieval castle surrounded by a forest, has an outstanding Gothic interior. The forest is protected by UNESCO as a “biospheric preservation” area.

Terezín :

- Originally a 19th-century fortress, Terezín was used as a concentration camp by the Nazis. In 1944 it was falsely presented to visitors from the Red Cross as a model camp. Today, the camp remains as a memorial to those who died there.

Kutná Hora :

- Kutná Hora is an attractive medieval town, whose main attraction is the magnificent St. Barbara’s Cathedral. There is also a 15th-century castle housing a mining museum with tours down the mineshafts. In the neighbouring village of Sedlec, the church interior is decorated with the bones of 40,000 plague victims.

Plzen (Pilsen):

- Plzen is the second biggest city in Bohemia, with a pleasant main square, and is most notable for being the home of Pilsner beer. Tours are available of both the brewery and the nearby beer museum.

*Within a 2-hour drive of the Hotel*

Hluboká:

- Often compared to England’s Windsor Castle, mock-Tudor Hluboká is one of the country’s most-visited castles. Built in the mid-13th century, this Gothic castle was purchased in 1661 by the Schwarzenberk family and rebuilt as their residence. The grounds include an extensive park and riding school.

Karlovy Vary (Carlsbad):

- Karlovy Vary is a spa, nesting deep in a beautiful wooded valley. This world-famous health resort has been in existence for over 600 years. Twelve thermal springs appear from a depth of over 2,000 meters. Also found here is Moser, the makers of elegant glassware and china, and the famous Becherovka, a liqueur produced from 100 herbs - often referred to as “the 13th healthy spring” of Karlovy Vary. The 18-hole golf club here is the oldest in the Czech Republic, established in 1904.

*Within a 3-hour drive of the Hotel*

Ceský Krumlov:

- The town and castle of Český Krumlov, located on a meander of the river Vltava, are

true jewels of architecture concentrated in a small space and are living witnesses to the magnificence of Czech history. The town was first mentioned in historical annals in 1253 and has been added to the UNESCO List of World Cultural Heritage.

#### CONFERENCE FACILITIES OVERVIEW

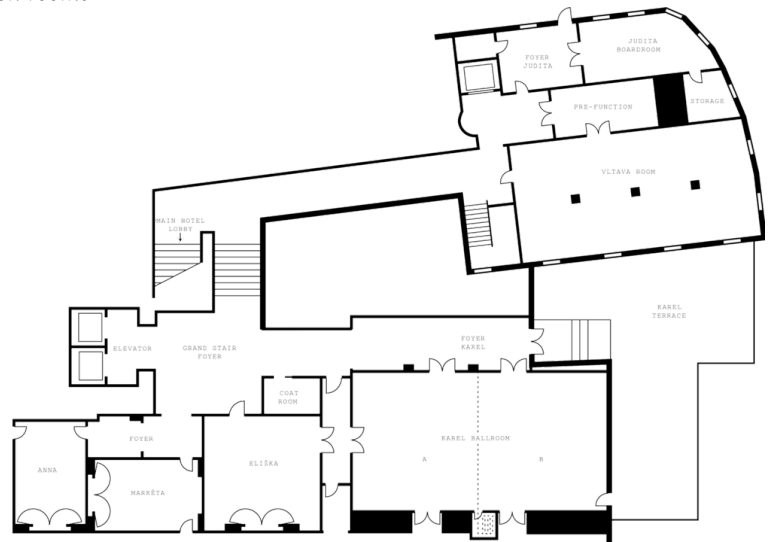
Total Space	635 m <sup>2</sup> 6,458 sq.ft.
Largest Ballroom	177 m <sup>2</sup> 1,905 sq.ft.
Meet and Feed (max. capacity)	120
Breakouts	4
Banquet (max. capacity)	150
Outdoor Banquet (max. capacity)	40
Private Dining (max. capacity)	10

#### CONFERENCE FACILITIES

Against the backdrop of its unique architecture and riverside perspective on the city, its meticulous service and advanced capabilities have made Four Seasons Hotel Prague the preferred location for Prague's finest business and social occasions.

The 635 square metres (6,835 square feet) of elegant, well-thought-out indoor venues readily adapt to business events, gala dinners, private receptions and theme nights. A riverside terrace overlooks the river, Prague Castle and Charles Bridge. Among the Hotel's 10 function and pre-function areas, three – including the magnificent Vltava Ballroom, one of the city's finest gathering spaces – are situated in the restored Baroque Building. Rich in Baroque architecture, all meeting spaces feature the latest in audiovisual support.

#### Meeting and function rooms



#### TECHNICAL ASSISTANCE

The Hotel continually updates its audiovisual presentation equipment. Special arrangements can be made to fulfill any request, and the standard inventory includes:

- Lecterns
- LCD colour display panels
- Equipment necessary for front projection and multi-image dissolve programming
- Video cameras
- Recorders
- Players and projectors
- Screens, flipcharts, easels and marker boards
- Wired or wireless Internet access in meeting rooms

#### MUSIC AND ENTERTAINMENT

Our team can arrange music and entertainment, from a traditional Bohemian party to gala dinners with live music and other creative events.

#### RECEIVING AND MAINTENANCE

All packages should be sent to the attention of the Conference Services Manager and should mention the name of the event. Limited space is available for the storage of large items. Please time shipping to the date of your arrival. Receiving facilities include a small-capacity loading dock with off-street access.

Please contact the Conference Services Manager for information on Customs Brokers.

#### *Maintenance*

The Engineering Department is available for general assistance with lighting, room temperature control and minor repairs.

#### BUSINESS SERVICES

Around the clock, Four Seasons can assist you with business, entertainment or travel arrangements through the Business Center and resourceful, multilingual Concierge.

- 24-hour business services
- Airline reservation service
- Audiovisual equipment
- Computers
- Secretarial service
- Translation and interpretation service
- Wired or wireless Internet access in meeting rooms

#### SPOUSE PROGRAMMES

##### On-site

- Cooking with the Chef
- Overview of local architecture, history and music
- Rejuvenation programmes (massages, sauna, fitness)

##### Off-site

- Diverse tours in town to Prague Castle, St. Vitus Cathedral, Golden Lane and Jewish Quarter
- Tours to the National Museum, Mucha Museum, Mozart Museum and Puppet Museum
- Private tour through the Estates Theatre
- City tour with carriage and horses
- Guided visit to a glass factory
- Tours with local guides to Karlovy Vary (Carlsbad), Melník Castle, Konopiste Castle and Mariánské Lázně

#### CHILDRENS AND FAMILY PROGRAMMES

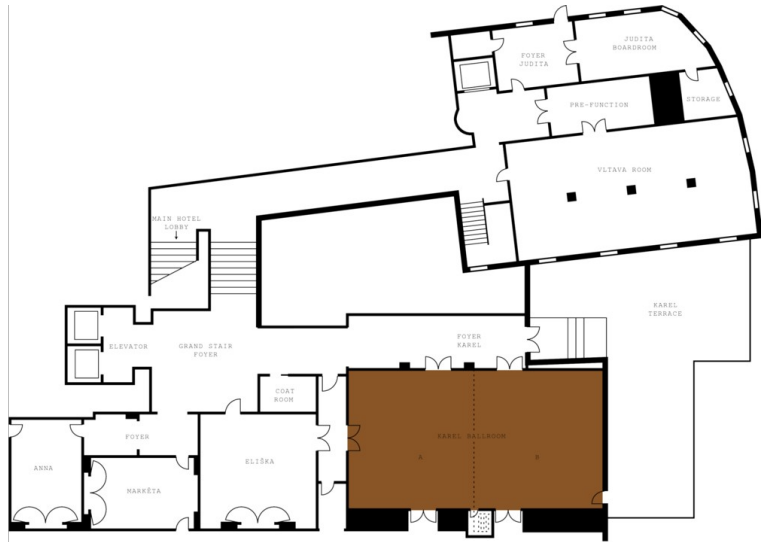
The Hotel can help you arrange activities such as visits to the local zoo, Petřín Hill, the Puppet Theatre or local museums. Výstaviště is a popular outing where children enjoy the fun park, theatre, outdoor cinema, the planetarium, expositions and a musical jet.

**KAREL BALLROOM**

Dimensions	18.4 x 9.6 m 60 x 32 ft
Size	177 m <sup>2</sup> 1,905 sq.ft.
Height	3.2 m 10.5 ft

*Capacities*

Classroom	120
Hollow square	66
U Shape	48
Theatre	200
Reception	200
Banquet Rounds	150

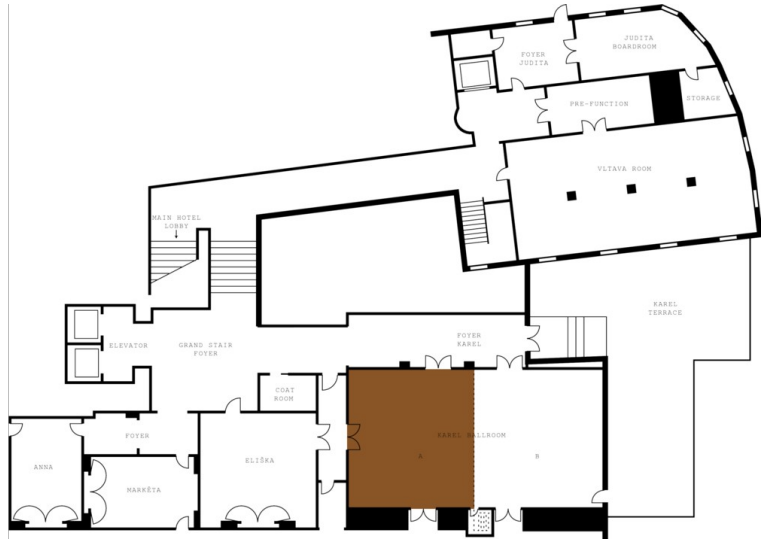


**KAREL A**

Dimensions	9.1 x 9.6 m 30 x 31 ft
Size	87 m <sup>2</sup> 940 sq.ft.
Height	3.2 m 10.5 ft

*Capacities*

Classroom	48
Hollow square	36
U Shape	30
Theatre	90
Reception	80
Banquet Rounds	60



**KAREL B**

Dimensions	9.4 x 9.6 m 30.5 x 31 ft
Size	90 m <sup>2</sup> 965 sq.ft.
Height	3.2 m 10.5 ft

*Capacities*

Classroom	48
Hollow square	36
U Shape	30
Theatre	90
Reception	80
Banquet Rounds	60

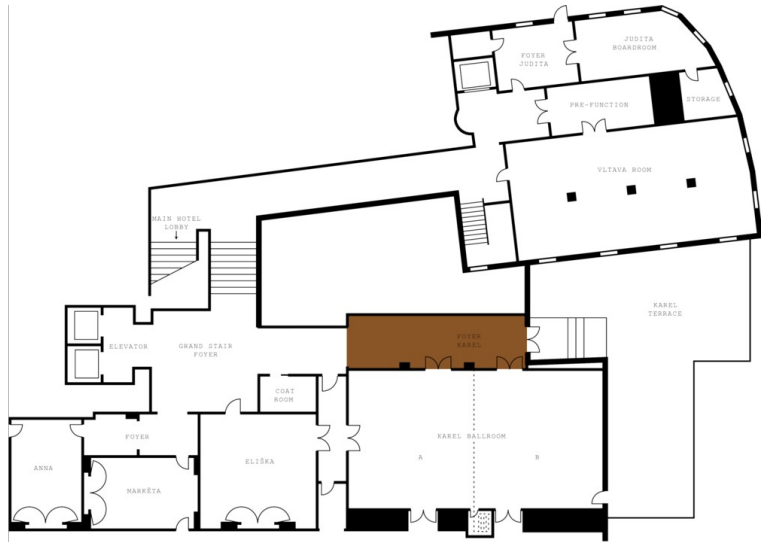


**KAREL FOYER**

Dimensions	13 x 3.5 m 43 x 11 ft
Size	45 m <sup>2</sup> 485 sq.ft.
Height	3 m 9.8 ft

*Capacities*

Reception	50
-----------	----

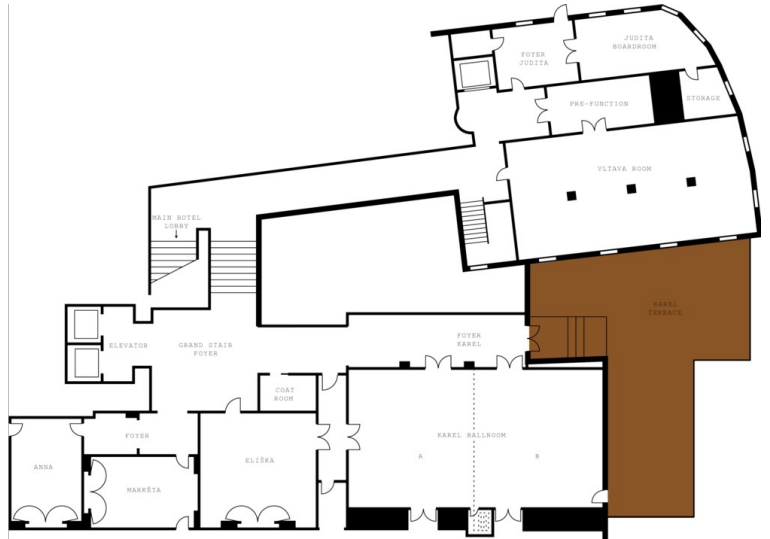


**KAREL TERRACE**

Dimensions	12 x 6 m 39 x 20 ft
Size	72 m <sup>2</sup> 775 sq.ft.
Height	- -

*Capacities*

Reception	100
-----------	-----

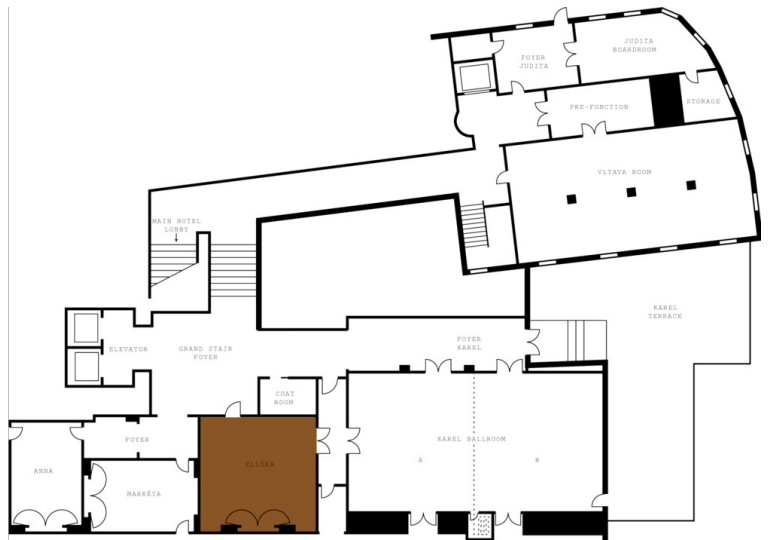


**ELIŠKA**

Dimensions	7.8 x 8 m 26 x 26 ft
Size	62 m <sup>2</sup> 670 sq.ft.
Height	3 m 10 ft

*Capacities*

Classroom	36
Hollow square	24
U Shape	24
Theatre	60
Reception	65
Banquet Rounds	48

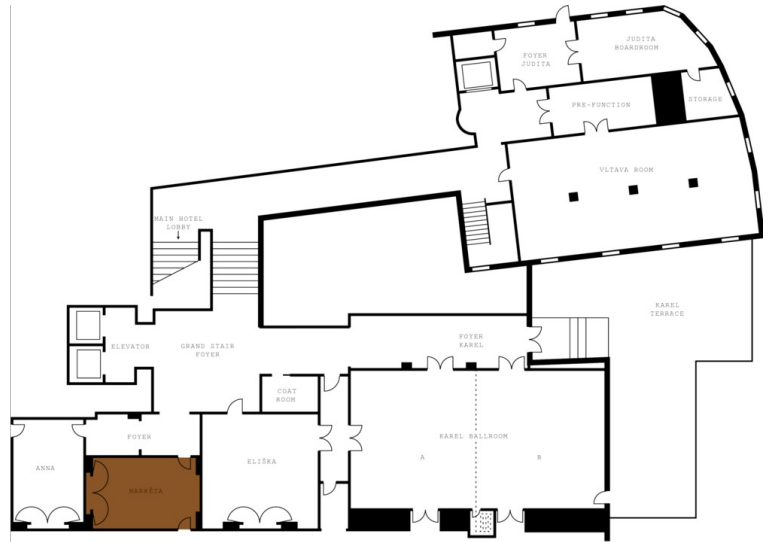


**MARKĚTA**

Dimensions	7.6 x 5 m 25 x 16 ft
Size	39 m <sup>2</sup> 420 sq.ft.
Height	3 m 10 ft

*Capacities*

Classroom	27
U Shape	15
Theatre	30
Reception	25
Banquet Rounds	24
Boardroom	18

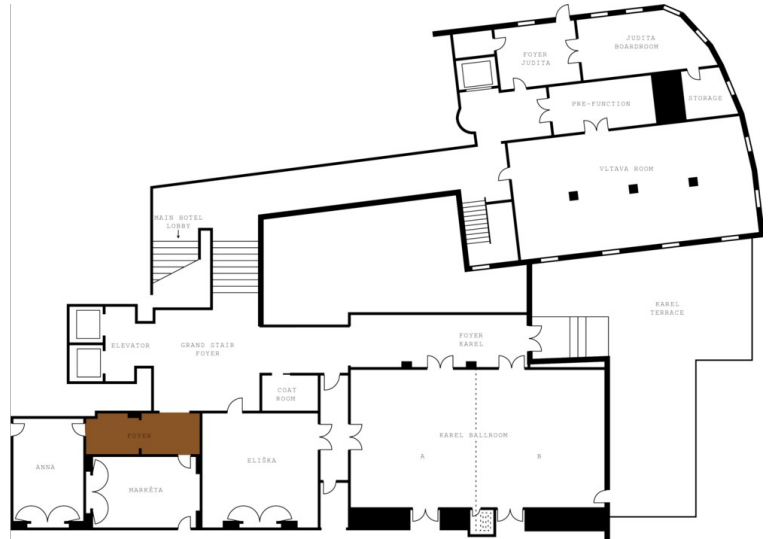


**MARKĚTA FOYER**

Dimensions	7 x 2 m 23 x 6.6 ft
Size	14 m <sup>2</sup> 152 sq.ft.
Height	3 m 9.8 ft

*Capacities*

Reception	20
-----------	----

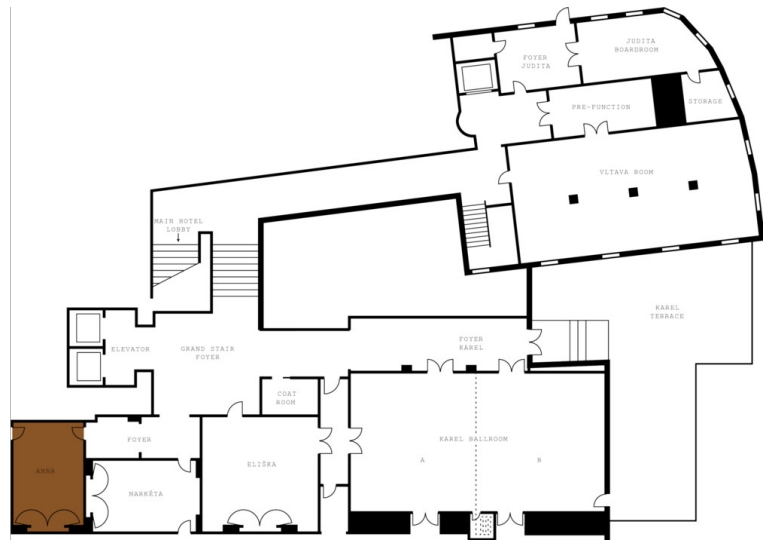


**ANNA**

Dimensions	7.6 x 5 m 25 x 16 ft
Size	37 m <sup>2</sup> 400 sq.ft.
Height	3 m 10 ft

*Capacities*

Classroom	27
U Shape	15
Theatre	30
Reception	25
Banquet Rounds	24
Boardroom	18

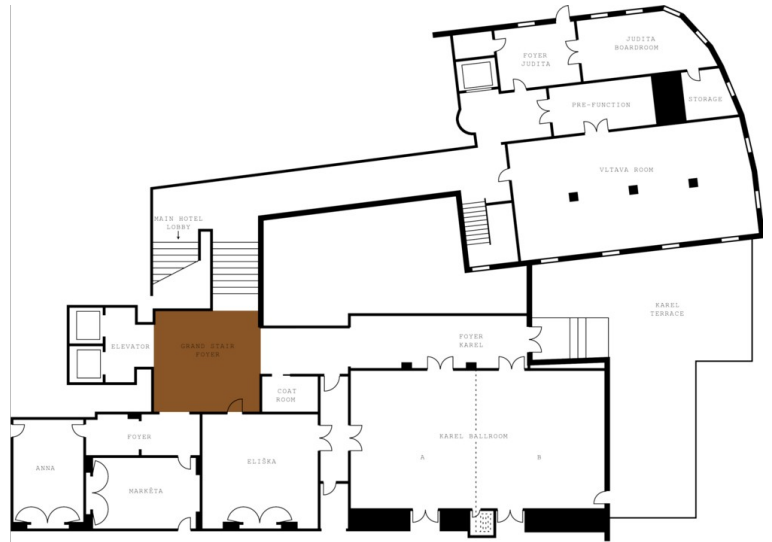


**GRAND STAIRS FOYER**

Dimensions 7.5 x 8 m  
25 x 26 ft  
Size 60 m<sup>2</sup>  
645 sq.ft.  
Height 3.5 m  
11.5 ft

*Capacities*

Reception 75



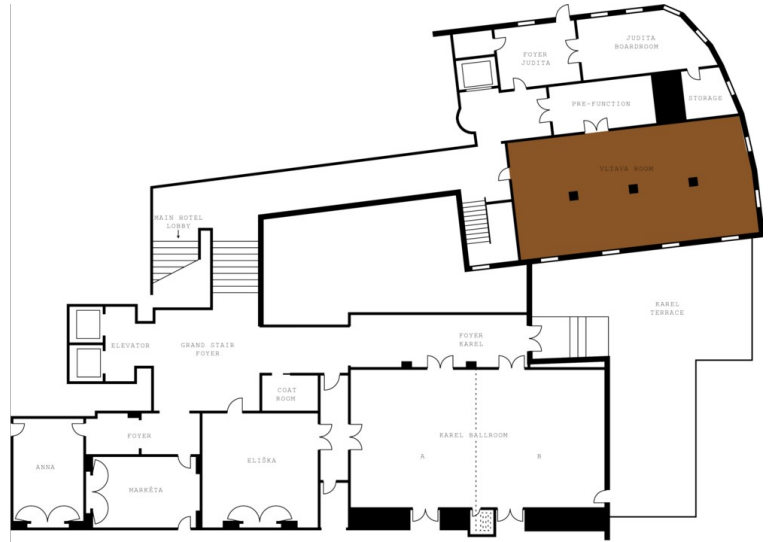
**VLTAVA**

Dimensions 17.8 x 8.5 m  
58 x 28 ft  
Size 151 m<sup>2</sup>  
1,624 sq.ft.  
Height 2.5-4.0 m  
8 x 13 ft

*Capacities*

Reception 130

Banquet Rounds 90

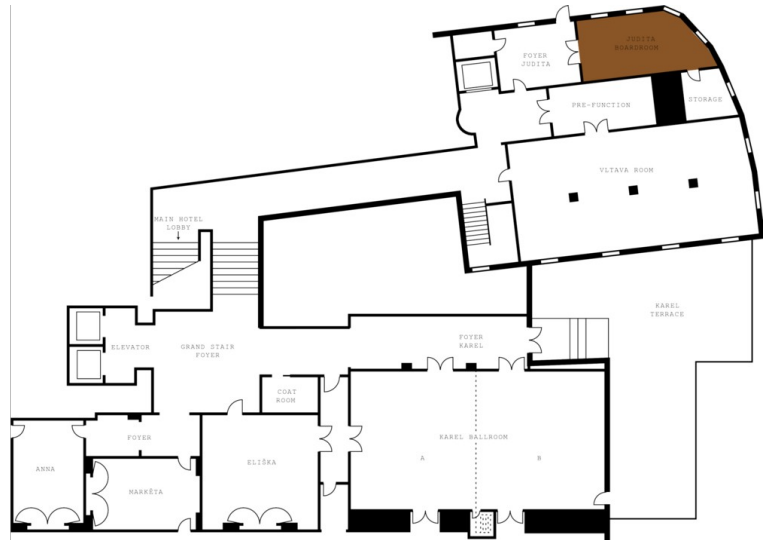


**JUDITA**

Dimensions 6.5 x 3 m  
21 x 9.8 ft  
Size 20 m<sup>2</sup>  
206 sq.ft.  
Height 3.0-3.5 m  
10 x 11 ft

*Capacities*

Boardroom 14

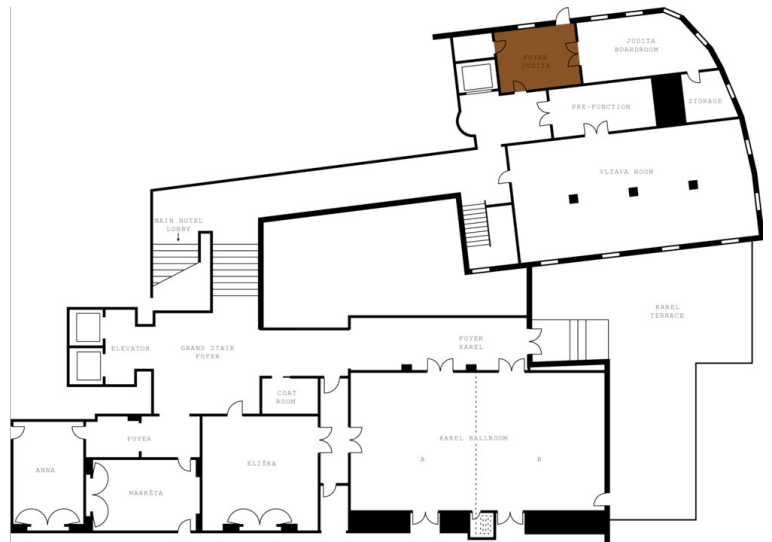


JUDITA FOYER

Dimensions 6.1 x 3.2 m  
20 x 10.5 ft  
Size 20 m<sup>2</sup>  
215 sq.ft.  
Height 3 - 3.5 m  
9.8 - 11.5 ft

Capacities

Reception 14



### GUEST ROOMS, SUITES AND PRIVATE RESIDENCES OVERVIEW

Four Seasons Hotel Prague encompasses three historic structures – from the Baroque, Neo-Classicist and Neo-Renaissance periods – united by a new modern building. Interior décor is inspired by the various historical periods, infusing the Hotel with genuine Czech character.

The 161 guest rooms, including 20 suites, are among Prague’s largest. The one-of-a-kind building concept creates a variety of guest room layouts, even within the same category.

Each features a Four Seasons marble bathroom with a deep soaking tub, separate glass shower and WC in a separate alcove. Technological comforts include flat-screen TVs and iPod connections, as well as wired and wireless high-speed Internet access.

<i>Room Category</i>	<i>#</i>	<i>Beds</i>	<i>Size (m<sup>2</sup>)</i>	<i>View (sq ft)</i>	<i>View</i>
- Premier Room	6	1 King	41	441	Uninterrupted views of Charles Bridge, Prague Castle and Vltava River
- River-View Room	12	1 King or 2 twin	38	409	Vltava River, Malá Strana, Prague Castle or Charles Bridge
- Renaissance Room	27	1 King	40-46	430 – 503	Neighbouring Monastery of the Knights of the Cross or the historic city centre
- Deluxe Room	46	1 King or 2 twin	40	430	Monastery, historic city centre or the neo-Renaissance university building
- Superior Room	25	1 King	35	376	Surrounding streets and buildings
- Standard Room	25	1 King	33	355	Neo-Renaissance university building
- Presidential Suite	1	1 King . 2 2 King . 4 4 King .	200 - 370	2,152 - 4,000	Vltava River, Malá Strana Prague Castle, and the Charles Bridge
- Premier Suite in Main Building	1	1 King . 2 2 King . 3 3 King .	115 - 196	1,242 - 2,110	The Vltava River, the Charles Bridge, Prague Castle, the Lesser Quarter and the Strahov Monastery
- Premier Suite in Classical Building	1	1 King . 2 2 King . 3 3 King .	115 - 191	1,242 - 2,056	The Vltava River, the Charles Bridge, Prague Castle, the Lesser Quarter and the Strahov Monastery
- One-Bedroom Suite – Castle View	4	1 King	75	807	Vltava River, Prague Castle, Charles Bridge and Petrin Hill
- One-Bedroom Superior Suite	5	1 King	73	785	Prague Castle, Charles Bridge, Malá Strana and Vltava River
- Four Seasons Renaissance Suite	1	1 King	86	926	Surrounding buildings of the hotel complex
- Four Seasons Duplex Suite	6	1 King	79	850	Partial views of Prague Castle, Charles Bridge, Malá Strana and Vltava River
- Baroque Suite	1	1 King	65	700	Surrounding buildings of the hotel complex

### Guest Room Overview

Choices start with comfortable Standard Rooms. Superior Rooms are slightly larger and, on the top floor, offer vaulted ceilings. Most face south and, in the Renaissance Building, some overlook the Monastery of the Knights of the Cross. Deluxe Rooms add space and some offer top-floor views. The Hotel's largest guest rooms are the elegant, inviting Renaissance Rooms. Newly refurbished, they reflect the architectural style of the Renaissance Building. River-View Rooms face the water, while Premier Rooms have larger windows to frame views of the Charles Bridge and Prague Castle.

The one-of-a-kind Baroque Suite in the Baroque Building and generously sized Four Seasons Renaissance Suite each feature the privacy of a separate living area for entertaining or meetings. Most of the two-level Four Seasons Deluxe Suites overlook the city's landmarks, and some have balconies.

#### *Suites Overview*

One-Bedroom Superior Suites are spacious options for families or business travellers. Most have beautiful views of the Vltava River and Prague Castle or Charles Bridge and Malá Strana. They are located in the Classical Building and the Main Building; layouts vary with the location within the Hotel. The spacious One-Bedroom Suites – Castle View offer stunning vistas from floor-to-ceiling windows. Two Premier Suites are available, one in the Classical Building, with up to three bedrooms, and one in the Main Building, offering stunning views of the landmarks of Prague. Both feature a dining area for six.

The Presidential Suite is a luxurious private residence with up to four bedrooms. Secluded in the 18th-century Baroque Building, it offers views of Charles Bridge and Prague Castle. Carefully selected furnishings include prized original artwork.

**FOUR SEASONS DUPLEX SUITE**

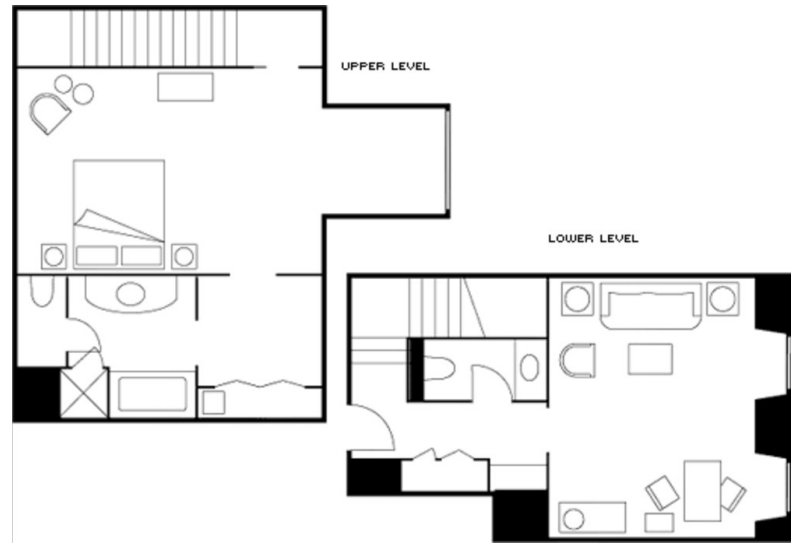
Number 6  
Beds King bed  
Size 79 m<sup>2</sup>  
850 sq ft

*Location*

Classical Building and Main Building

*View*

Partial views of Prague Castle, Charles Bridge, Malá Strana and Vltava River



**PRESIDENTIAL SUITE**

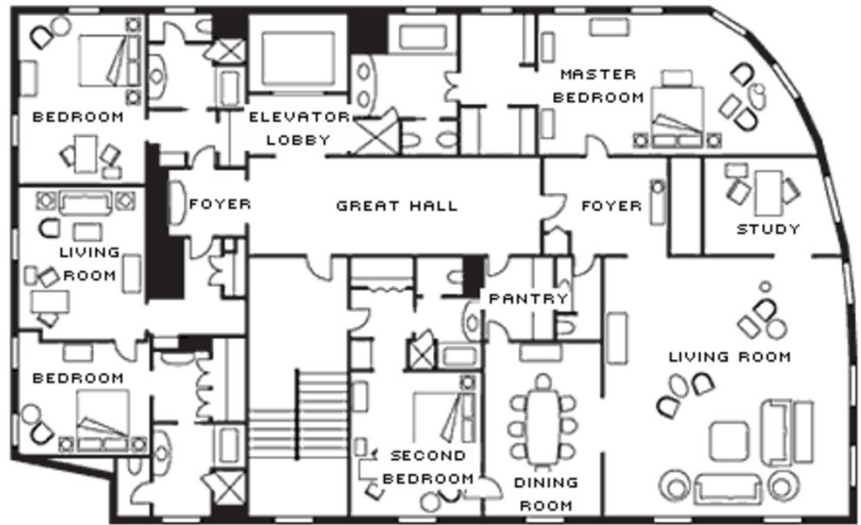
Number 1  
Beds One bedroom: King bed.  
Two bedroom: Two king beds. Four bedroom: Four king beds.  
Size 200 - 370 m<sup>2</sup>  
2,152 - 4,000 sq ft

*Location*

Second level of the 18th-century Baroque Building

*View*

Vltava River, Malá Strana Prague Castle, and the Charles Bridge



PREMIER SUITE IN MAIN BUILDING

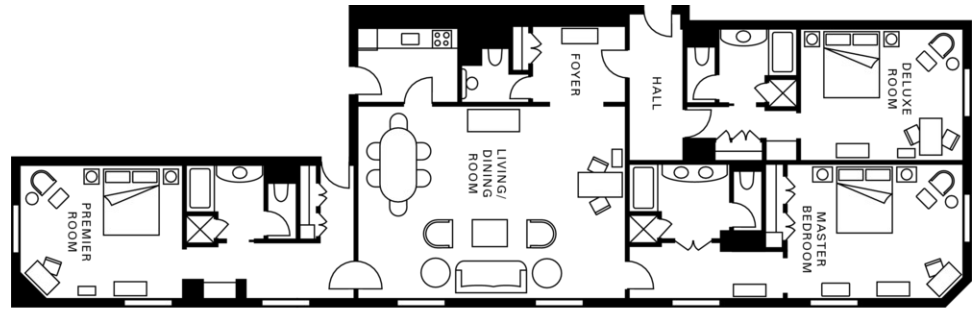
Number 1  
Beds One bedroom: King bed.  
Two bedroom: Two king  
beds. Three bedroom:  
Three king beds.  
Size 115 - 196 m<sup>2</sup>  
1,242 - 2,110 sq ft

Location

Top floor (7th floor) of the Main  
Building

View

The Vltava River, the Charles Bridge,  
Prague Castle, the Lesser Quarter and  
the Strahov Monastery



PREMIER SUITE IN CLASSICAL  
BUILDING

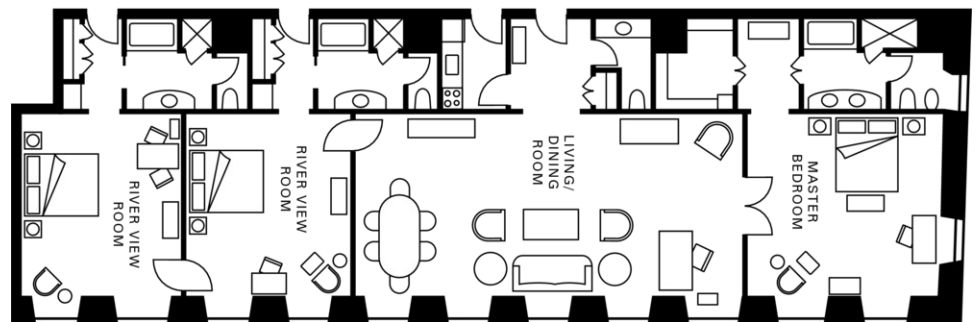
Number 1  
Beds One bedroom: King bed.  
Two bedroom: Two king  
beds. Three bedroom:  
Three king beds.  
Size 115 - 191 m<sup>2</sup>  
1,242 - 2,056 sq ft

Location

Second floor of the Classical Building

View

The Vltava River, the Charles Bridge,  
Prague Castle, the Lesser Quarter and  
the Strahov Monastery



ONE-BEDROOM SUITE – CASTLE VIEW

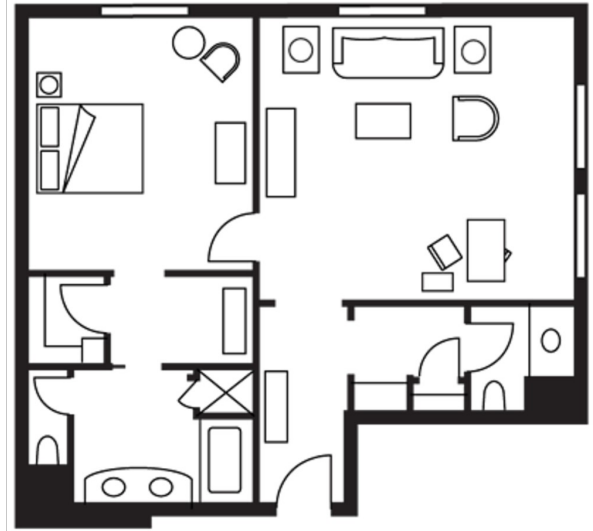
Number 4  
Beds King bed  
Size 75 m<sup>2</sup>  
807 sq ft

Location

Main Building

View

Vltava River, Prague Castle, Charles  
Bridge and Petrin Hill



ONE-BEDROOM SUPERIOR SUITE

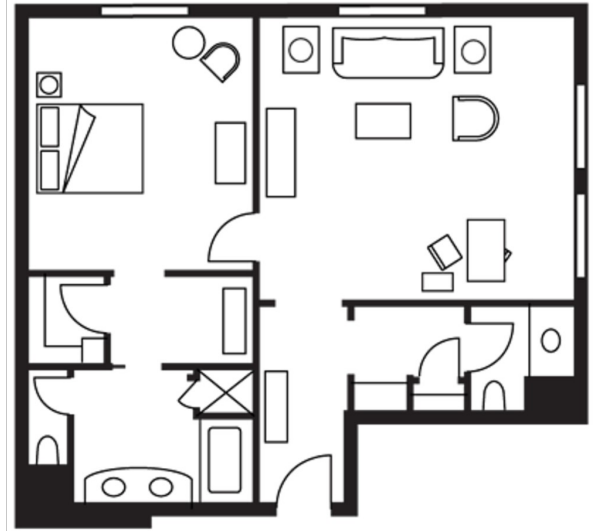
Number 5  
Beds King bed  
Size 73 m<sup>2</sup>  
785 sq ft

Location

Lower floors of Classical Building and  
Main Building

View

Prague Castle, Charles Bridge, Malá  
Strana and Vltava River



STANDARD ROOM

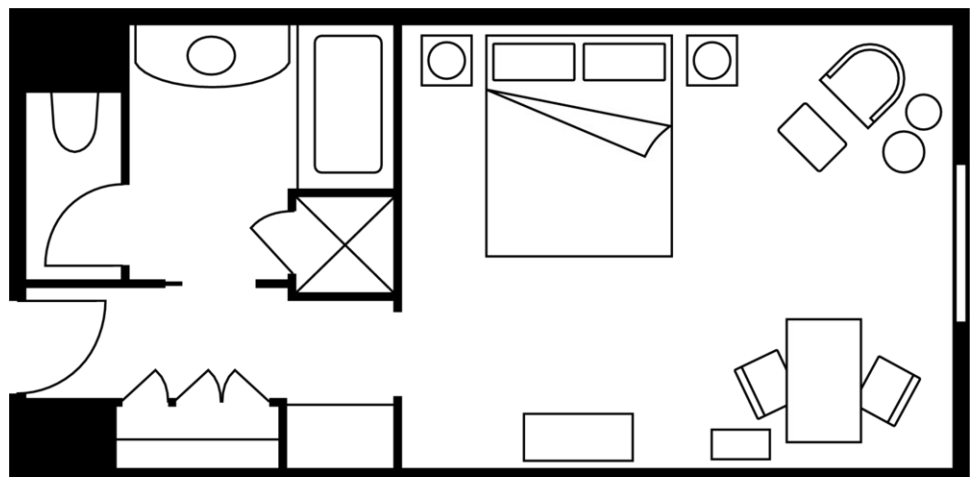
Number 25  
Beds King bed  
Size 33 m<sup>2</sup>  
355 sq ft

Location

2nd to 4th floors

View

Neo-Renaissance university building



#### AMENITIES

- All news cable network
- CD player
- Clock radio
- Complimentary local newspaper
- Down duvets
- Down pillows
- DVD player
- Fax machine on request
- Hair dryer
- Hypo-allergenic bedding on request
- In-room safe
- Multi-line telephone(s) with voicemail
- Refrigerated private bar
- Thick terry bathrobes
- Twice-daily housekeeping service
- Wired or wireless Internet access

#### GUEST SERVICES

- 24-hour In-Room Dining
- 24-hour laundry/dry-cleaning/pressing
- 24-hour multilingual Concierge
- Complimentary overnight shoeshine
- Gift shop
- Non-smoking rooms
- One-hour pressing
- Restaurant
- Umbrellas
- Valet parking

#### VIP GIFTS AND WELCOME AMENITY

Special arrangements can be made for guests to purchase welcome amenities for VIP guests, including:

- Classical music CDs of Czech composers such as Smetana and Dvorák
- Handmade Bohemia crystal
- Hand-painted porcelain
- Wooden toys
- Czech wine and beer

---

DINING HOURS OF OPERATION

---

*In-Room Dining*

Breakfast	6:00 am - 11:00 am
All-day dining	11:00 am - midnight
Late night menu	midnight - 6:00 am

---

DINING

From November 1, 2011, to February 2012, guests are invited to enjoy à la carte breakfast, lunch and dinner in Eliška or through In-Room Dining. During this period, our restaurant, Allegro, will be undergoing enhancements to re-open as a chic urban restaurant, lounge and bar, offering high-quality Italian cuisine based on traditional recipes with contemporary touches.

RESTAURANTS

LOUNGES

## RECREATION FACILITIES

Work out in the health club, with our compliments. Or simply ask the multilingual Concierge for assistance arranging other activities, whether nearby golf, a boat ride on the Vltava River or rambles in the Bohemian countryside.

### SPA SERVICES

Guests can enjoy a variety of massages in the Health Club's two private treatment rooms. Separate locker facilities for men and women each include a relaxing sauna, where scented water is poured over hot stones.

### FITNESS FACILITIES

Complimentary for hotel guests, the 24-hour Health Club is a 150-square-metre (1,614 square-foot) facility that includes separate locker areas with saunas for men and for women, two massage rooms and an exercise area with the latest in fitness equipment. The services of a personal trainer are also available.

### GOLF

#### *Golf Resort Konopiste*

Located just one hour from the Hotel, Golf Resort Konopiste is one of the most beautiful golf resorts in the Czech Republic. It offers two championship courses to choose from – the Radecky, which opened in 2002, and the D'Este, which opened in 2005. Both are 18-hole, par-72 courses.

#### *Praha Karlstejn Golf Club*

The Praha (Prague) Karlstejn Golf Club, established in 1992, opened its golf course in 1993. This unique course was designed by the Canadian duo Les Furber and Jim Eremko, and is set amidst beautiful scenery with the majestic Karlstejn castle as a backdrop.

Thirty minutes' drive from the Hotel, the wooded hilly landscape is an oasis of peace and quiet, with limestone outcrops and rich flora and fauna. Within this pleasant environment, the challenges of broken terrain, natural gorges, two lakes and many sand traps will satisfy even the most demanding of players. Designed to offer an easy bogey but difficult birdie, the course ensures that players with very different handicaps can play with equal enjoyment.

#### *Golf Club Karlovy Vary*

The oldest golf club in the Czech Republic, established in 1904, is today based at the Karlovy Vary course, Olsova Vrata. Designed by architect Noskowski in 1931 and created in 1932, the golf course reflects the highest contemporary standards, with completely reconstructed tee boxes, an irrigation system and a clubhouse.

#### *Golf Club Mariánské Lázně*

This is the oldest existing golf course on Czech soil. It was inaugurated by King Edward VII of Great Britain in August 1905. Owned by the famous neighbouring spa town and leased by the golf club, the site features a clubhouse restored to preserve its original design.

This very well maintained flat parkland course is the setting for European PGA Tour events, and a good challenge for every category of golfer.

Due to the course's elevated position above sea level, the season starts a few weeks later than on other Czech courses.

## INCENTIVE ACTIVITIES

### Sample itinerary

---

#### Day 1

##### Arrival at Hotel

After check-in at the hospitality suite, attend a welcome reception on Karel Terrace or in the Hotel's unique Baroque Villa.

##### Afternoon

- Relax after your flight or drive at the Hotel's spa or health club.
- Join a walking tour of the Old Town. Explore winding cobbled streets of the historical city centre, visit Old Town Square, Astronomical Clock and Charles Bridge. The tour also includes refreshments, usually local wine, and a puppet show.

##### Evening

Attend a Bohemian reception on Karel Terrace with views of Prague Castle. An elaborate buffet dinner follows, where you will be treated to traditional Czech specialties such as Prague ham, duck, and Czech beer.

---

#### Day 2

##### Morning

Enjoy breakfast in an elegant private dining room, then set out to explore the city's unique attractions.

- Visit Prague Castle, the largest ancient castle in the world. Its fountains and courtyards, the towering St. Vitus Cathedral, nearby Stahov Monastery, numerous palaces and summerhouses make for a fascinating visit.
- Take a private tour on Prague's historic tram with entertainment by an accordion player.
- Have lunch at Lobkowitz Palace or Lvi Dvur (Lion's Court).

##### Afternoon

- Go shopping for Czech glass, china, lace, marionettes, wooden toys, and items made of amber, ruby or garnet which Prague is famous for.
- Return to the Hotel and relax with a body treatment in the spa.

##### Evening

Explore Prague's diversified local eateries, from beer halls to French, Italian, Cuban or fusion restaurants.

---

#### Day 3

##### Morning

Enjoy breakfast in an elegant private dining room, then spend the morning exploring Prague's unique attractions.

- Karlstejn Castle, historically and architecturally the most important castle in Bohemia.
- Krivoklat Castle, to view its exhibitions of Gothic paintings and sculptures.
- Visit Nizbor, a glass factory, and browse its gift shop.
- Spend time at the private "living" art gallery of Antonin Manto Mmka and create your own glass artifact.

Afternoon

- Learn to cook traditional Czech dishes in a Bohemian cooking class.
- Learn to paint from a local artist.
- Learn a musical instrument.
- Learn about wine and enjoy wine tasting in the 14th century wine cellar of Knights of Red Cross.

Evening

Attend a cocktail reception at the Hotel and be chauffeured in a vintage car to a private concert in the State Opera, Municipal House or Rudolfinum Concert Hall. After the concert, dine with the musicians on stage or in the stalls with opera singers.

---

Day 4

Morning

Breakfast in an elegant private dining room, then set out to explore the city's unique attractions on a walking tour.

- Mozart tour – Visit back stage of the Estates Theatre where Mozart's Don Giovanni was first performed.
- Jewish Quarter – Tour seven synagogues and the oldest Jewish cemetery in Europe.
- Art Nouveau tour
- Alfonso Mucha tour

Afternoon

- View one of the most important private art collections in Europe, Six Centuries of European Art Patronage, at the 16th century castle of Nelahozeves. Enjoy a private concert and reception afterwards.
- Visit the castle of Cesky Sternberk, originally a 13th-century Gothic castle which was converted to Baroque style by the Habsburgs in the 17th and 18th centuries.

Evening

Experience an enchanting night of Mozart's masterpieces at a gala dinner in Prague Castle.

*Alternatively, visit Cesky Krumlov on a private chartered train for a day. Tour a Gothic castle in Southern Bohemia or Marianske Lazne (Marien Bad), followed by a spa experience in Western Bohemia.*

---

Day 5

Morning

Enjoy a leisurely farewell brunch before continuing on your European journey.

---

www.fourseasons.com/prague

Rooms	Dimensions		Size		Height		Classroom	Hollow square	U-shape	Theatre	Reception	Banquet rounds	Conference/ boardroom
	(m)	(ft)	(m <sup>2</sup> )	(sq ft)	(m)	(ft)							
- Karel Ballroom	18.4 x 9.6	60 x 32	177	1,905	3.2	10.5	120	66	48	200	200	150	52
- Karel A	9.1 x 9.6	30 x 31	87	940	3.2	10.5	48	36	30	90	80	60	36
- Karel B	9.4 x 9.6	30.5 x 31	90	965	3.2	10.5	48	36	30	90	80	60	36
- Karel Foyer	13 x 3.5	43 x 11	45	485	3	9.8	-	-	-	-	50	-	-
- Karel Terrace	12 x 6	39 x 20	72	775	-	-	-	-	-	-	100	-	-
- Eliška	7.8 x 8	26 x 26	62	670	3	10	36	24	24	60	65	48	24
- Markéta	7.6 x 5	25 x 16	39	420	3	10	27	-	15	30	25	24	18
- Markéta Foyer	7 x 2	23 x 6.6	14	152	3	9.8	-	-	-	-	20	-	-
- Anna	7.6 x 5	25 x 16	37	400	3	10	27	-	15	30	25	24	18
- Grand Stairs Foyer	7.5 x 8	25 x 26	60	645	3.5	11.5	-	-	-	-	75	-	-
- Vltava	17.8 x 8.5	58 x 28	151	1,624	2.5-4.0	8 x 13	-	-	-	-	130	90	-
- Judita	6.5 x 3	21 x 9.8	20	206	3.0-3.5	10 x 11	-	-	-	-	-	-	14
- Judita Foyer	6.1 x 3.2	20 x 10.5	20	215	3 -3.5	9.8 - 11.5	-	-	-	-	14	-	-