

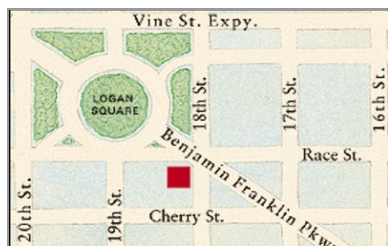


Quick Reference Guide

Last updated May 3, 2012 | For additional information please contact the hotel directly

Four Seasons Hotel Philadelphia
One Logan Square, Philadelphia, Pennsylvania, 19103-6933, U.S.A.
Tel 1.215.963.1500 | Fax 1.215.963.9506 | Res 1.866.516.1100

www.fourseasons.com/philadelphia



One Logan Square
Philadelphia, Pennsylvania
19103-6933, U.S.A.
Tel 1.215.963.1500
Fax 1.215.963.9506
Res 1.866.516.1100

AIRPORT

- From Philadelphia International Airport (PHL) : (10 miles/16 kilometres)

TABLE OF CONTENTS

- 2 *Introduction*
- 4 *Destination*
- 8 *Conference Facilities*
- 15 *Guest rooms, Suites and Private Residences*
- 21 *Dining*
- 22 *Recreational Facilities*
- 23 *Appendix: Conference Chart*

In the heart of downtown – with unequalled views of the graceful Swann Memorial Fountain – Four Seasons Hotel Philadelphia ensures a memorable experience of this warm historic city. Founded in 1682, Philadelphia balances its celebrated past with a dynamic urban atmosphere that encompasses premier cultural attractions, exceptional shopping and innovative restaurants.



At One Logan Square, steps from financial, retail and cultural centres, Four Seasons offers a privileged location from which to explore historic Philadelphia. The Hotel's 364 guest rooms and suites, with classical furnishings and details drawn from the Federal period, and unique inner courtyard offer a calm retreat from the bustle of the city.

Dining at Four Seasons offers a classical approach tempered by global influences, with a focus on local ingredients. A range of venues, from the formal ballroom to the garden courtyard, provides an abundance of unique choices for social and business events. To unwind, consider a workout in the fitness centre, a treatment in the full-service spa or a dip in the resort-style indoor swimming pool.

TRANSPORTATION

The Hotel is adjacent to Benjamin Franklin Parkway and is about 25 minutes from the Philadelphia International Airport, which is served by all major domestic and international carriers. All major car rental firms operate at the airport, and taxi and limousine services are available.

WEATHER CHART

Month	°F		°C	
	Highs	Lows	Highs	Lows
January	40	/ 26	4	/ -3
February	41	/ 26	5	/ -3
March	50	/ 33	10	/ 1
April	62	/ 43	17	/ 6
May	73	/ 53	23	/ 12
June	81	/ 63	27	/ 17
July	85	/ 68	29	/ 20
August	83	/ 66	28	/ 19
September	77	/ 60	25	/ 16
October	66	/ 49	19	/ 9
November	54	/ 39	12	/ 4
December	43	/ 29	6	/ -2

DESTINATION

Named by William Penn, an English Quaker and the founder of the city, Philadelphia is a Greek word meaning “City of Brotherly Love.” The city grew rapidly, becoming the second-largest English-speaking city in the world just before the American Revolution. Independence National Park in the Old City, near the Delaware River, is home to Independence Hall, where both the Declaration of Independence and the Constitution were adopted. Logan Circle, where Four Seasons is located, brings the style of Europe to the birthplace of America with a design inspired by Place de la Concorde in Paris. Nearby are some of the city’s historical landmarks and world-renowned Museum Row. With a population of some 5.8 million, Philadelphia is known for its diverse ethnic mix and warm hospitality.

WEATHER

Due to its location in the mid-Atlantic states, Philadelphia avoids long spells of extreme weather, but the city experiences all four seasons.

LOCAL ATTRACTIONS AND ACTIVITIES

At Four Seasons, you enjoy a unique vantage point from which to explore the sights, sounds and experiences around you. We hope the highlights of local attractions below help simplify your planning. Please let us know how else we can assist you.

Within a few minutes walk of the Hotel

The Academy of Natural Sciences:

- The museum’s Dinosaur Hall houses huge skeletons, interactive exhibits, state-of-the-art video technology and a population of mammals, reptiles and invertebrates inhabit the Live Animal Center.

Within a 5-minute walk of the Hotel

Franklin Institute Science Museum:

- Four floors of hands-on exhibits dedicated to making science and technology fun for all ages can be found at Franklin Institute Science Museum. Visitors can ride a 350-ton Baldwin locomotive, walk through a giant heart and sit behind the controls of a jet fighter.

Within a 10-minute walk of the Hotel

Rodin Museum:

- The largest collection of the sculptor’s work outside of Paris including casts of *The Thinker* and *The Gates of Hell*.

Pennsylvania Academy of Fine Arts:

- Nearly every renowned American artist has attended, exhibited or taught at the Academy. The 1876 historic landmark building, designed by Frank Furness and George Hewitt, and the new Samuel M.V. Hamilton Building house one of the finest collections of American painting, sculpture and works on paper in the world.

Within a 15-minute walk of the Hotel

Philadelphia Museum of Art:

- This museum houses major works of fine and decorative art from all over the world, including European art from the Renaissance in 1850, an Asian collection with objects dating from the third millennium BC and a number of works by Philadelphia artists.

Within a 10-minute drive of the Hotel

Betsy Ross House:

- This restored colonial home, located in Philadelphia's Historic District, is where Betsy Ross lived and where she is credited with making the first U.S. flag.

Christ Church:

- The house of worship for 15 of the signers of the Declaration of Independence. Plaques mark the pews once occupied by George Washington, Benjamin Franklin and Betsy Ross. Founded in 1695, the church typifies early Georgian architecture.

Elfreth's Alley:

- The oldest residential street in America, Elfreth's Alley boasts 30 houses dating from 1728 to 1836 and offers a small museum that describes the street's history.

Independence National Historical Park:

- America's most historic square mile, Independence National Historical Park includes the pavilion housing the Liberty Bell, one of the nation's most hallowed symbols, and Independence Hall, where the Declaration of Independence and the Constitution were adopted. The National Constitution Center, also located here, tells the story of the US Constitution through more than 100 interactive and multimedia exhibits.

Atwater Kent Museum:

- Over 40,000 objects spanning the city's 300-year history are housed in the Museum, with particular emphasis on the material culture of urban life in the 19th and 20th centuries. This museum now is the home of the famous Norman Rockwell exhibit, which includes a comprehensive collection of Mr. Rockwell's *Saturday Evening Post* cover art.

Annenberg Center:

- Located at the University of Pennsylvania, high-quality professional theatricals are featured, including the Annenberg Center Theater Series, Dance Celebration, the International Theater Festival for Children, film and other specials.

Society Hill Playhouse:

- Philadelphia's oldest professional off-Broadway theatre, the Society Hill Playhouse presents contemporary comedy and drama.

Antique Row:

- Located on Pine Street, from 9th Street to 12th Street, fine furniture and funky collectibles are showcased.

Reading Terminal Market:

- This farmers' market, inside the historic Reading Railroad train shed, houses a diverse collection of stands selling foodstuffs and produce, including the products of

Pennsylvania's Amish community.

The Kimmel Center for the Performing Arts:

- This complex on the Avenue of the Arts in Center City complements the venerable Academy of Music and incorporates public amenities and two major venues: Verizon Hall and the Perelman Theater. The Academy of Music is also operated by the Kimmel Center as its third major venue. The Kimmel facilities host eight resident companies: The Philadelphia Orchestra, Peter Nero and the Philly Pops, Philadanco, The Chamber Orchestra of Philadelphia, The Philadelphia Chamber Music Society and American Theater Arts for Youth. The Academy of Music is home to the Opera Company of Philadelphia and the Pennsylvania Ballet.

The Philadelphia Zoo:

- The nation's oldest zoo is an exciting destination for the whole family to enjoy.

University of Pennsylvania Museum of Archaeology and Anthropology:

- A cache of golden jewels from the royal tombs of Ur are among the treasures of the University of Pennsylvania Museum of Archaeology and Anthropology.

University City :

- A bustling area dominated by college campuses, including the University of Pennsylvania and Drexel University. Cultural treasures on campus include examples of the work of architects Frank Furness and Louis I. Kahn. The University City Science Center is recognised as an incubator for technology companies.

Within a 15-minute drive of the Hotel

Adventure Aquarium:

- This aquarium features many hands-on exhibits and a wonderful outdoor children's garden.

Please Touch Museum for Children:

- The nation's first museum for children aged seven and younger. Children are introduced to the museum experience with a variety of interactive and hands-on exhibits about art, culture and science.

Manayunk:

- A colourful assemblage of charming shops, restaurants and galleries along the Schuylkill Canal.

Within a 30-minute drive of the Hotel

Morris Arboretum and Gardens of the University of Pennsylvania:

- One of America's finest Victorian landscape gardens, as listed in the National Register of Historic Places.

Brandywine River Valley:

- Southwest of Philadelphia is the lovely Brandywine River Valley. The subtle natural beauty of this area of rolling hills, estates and horse farms inspired three generations of artists named Wyeth. The Brandywine River Museum in Chadds Ford is home to

works by N.C., Andrew and Jamie Wyeth, as well as being a showcase of 19th- and 20th-century American art.

Within a 45-minute drive of the Hotel

Winterthur:

- Located in Wilmington, Delaware, the duPont estate features an unrivalled collection of 18th- and 19th-century American furnishings.

Valley Forge National Historical Park:

- The site of George Washington's winter encampment of 1777–1778, offers a vast green expanse for recreation, as well as Revolutionary War monuments.

Within a 1-hour drive of the Hotel

Longwood Gardens:

- The world's premier horticultural display contains eleven thousand types of plants, flourishing throughout 425 hectares (1,050 acres) of gardens and woodlands. The 1.6-hectare (4-acre) conservatory shelters 20 indoor gardens created by industrialist Pierre S. duPont.

CONFERENCE FACILITIES OVERVIEW

Total Space	15,855 sq.ft. 1,472 m ²
Largest Ballroom	4,374 sq.ft. 406 m ²
Meet and Feed (max. capacity)	150
Breakouts	11
Banquet (max. capacity)	380
Outdoor Banquet (max. capacity)	80
Private Dining (max. capacity)	16

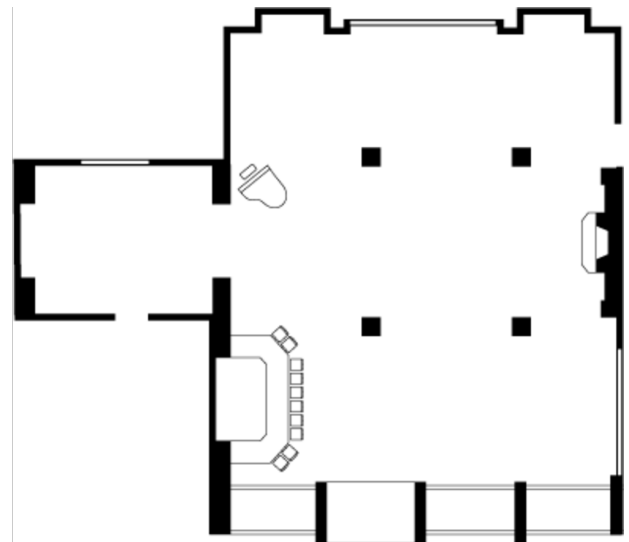
CONFERENCE FACILITIES

Four Seasons provides an abundance of unique choices for any event, for groups from 15 to 550 guests. Its 15,855 square feet (1,472 square metres) of function space in 14 distinctive venues includes the city's only outdoor reception and dining area – a lovely secluded courtyard with a gentle waterfall. Five boardrooms on upper floors are secluded for added privacy. From the grand Ballroom, aglitter with crystal chandeliers, the foyer opens to the terrace and courtyard, allowing events to spill outside in warm weather. Every gathering is enhanced by high-tech audiovisual technology, including wired and wireless high-speed Internet access, and the masterful supervision of a dedicated Four Seasons event planner.

Lobby and lower lobby level



Swann Restaurant



TECHNICAL ASSISTANCE

The Hotel continually updates its presentation equipment and keeps pace with changing technology. State-of-the-art audiovisual equipment includes:

- Lecterns with light and sound control

- Overhead projectors, LCD colour projectors, slide projectors
- Screens with drape kits
- Video cameras, video projectors, video players
- Microphones, mixers, amplifiers
- Audio cassette players and CD players
- Stands, carts, easels, flipcharts, laser pointer, speaker timer
- Personal computers and peripherals
- On-site technician
- Wired or wireless Internet access in meeting rooms

MUSIC AND ENTERTAINMENT

Our Conference Service Managers will be happy to assist with setting up any type of music or entertainment for your meeting.

RECEIVING AND MAINTENANCE

The Hotel features a full-service shipping and receiving office. All packages should be sent to the attention of a group's name and its Conference Service Manager. They will be stored in a separate conference storage area. Limited space is available for the storage of large items. Please time shipping to the date of your arrival.

Receiving dock

Please contact the receiving department or your Conference Service Manager for special arrangement for delivery of oversized packages or environmentally sensitive equipment.

Post-conference shipping

Shipping of post-conference materials may be coordinated through your Conference Service Manager.

Maintenance

The Engineering Department is available 24 hours a day for general assistance with lighting, room temperature control and minor repairs.

BUSINESS SERVICES

Around the clock, Four Seasons can assist you with business, entertainment or travel arrangements through the Business Center and resourceful, multilingual Concierge.

- 24-hour business services
- Audiovisual equipment
- Business equipment
- Computers
- Express check-in/check-out
- Secretarial service
- Translation and interpretation service
- Wired or wireless Internet access in meeting rooms

SPOUSE PROGRAMMES

Customised programmes draw on Philadelphia's long history. The following are a few of the many activities to interest spouses of meeting participants:

- Atlantic City Gambling Express
- Chinatown tour and lunch. City tours
- Cooking demonstrations

- Flower arranging
- Franklin Mills Outlet Shopping Mall
- Historical tours
- Lancaster, Pennsylvania and Amish country excursion and lunch
- Longwood Gardens and Winterthur in historic Brandywine Valley
- Shopping excursions

CHILDRENS AND FAMILY PROGRAMMES

We would be pleased to help arrange appropriate activities for visiting families.

BALLROOM

Dimensions 54 x 81 ft
16.5 x 24.7 m
Size 4,374 sq.ft.
406 m²
Height 13.6 ft
4 m

Capacities

Classroom 250
Theatre 480
Reception 500
Banquet Rounds 380



BALLROOM NORTH

Dimensions 54 x 39 ft
16.5 x 11.9 m
Size 2,106 sq.ft.
196 m²
Height 13.6 ft
4 m

Capacities

Classroom 135
Hollow square 70
U Shape 61
Theatre 250
Reception 250
Banquet Rounds 190



BALLROOM SOUTH

Dimensions 54 x 39 ft
16.5 x 11.9 m
Size 2,106 sq.ft.
196 m²
Height 13.6 ft
4 m

Capacities

Classroom 135
Hollow square 70
U Shape 61
Theatre 250
Reception 250
Banquet Rounds 190



BALLROOM FOYER

Dimensions 25 x 66 ft
7.6 x 20.1 m
Size 1,650 sq.ft.
153 m²
Height 10.6 ft
3 m

Capacities

Reception 380
Banquet Rounds 80



TERRACE

Dimensions 66 x 11.4 ft
20 x 3.5 m
Size 746 sq.ft.
69 m²
Height -
-

Capacities

Reception 125



WASHINGTON ROOM

Dimensions 33 x 42 ft
10 x 13 m
Size 1,386 sq.ft.
129 m²
Height 10 ft
3 m

Capacities

Classroom 80
Hollow square 52
U Shape 41
Theatre 144
Reception 150
Banquet Rounds 90

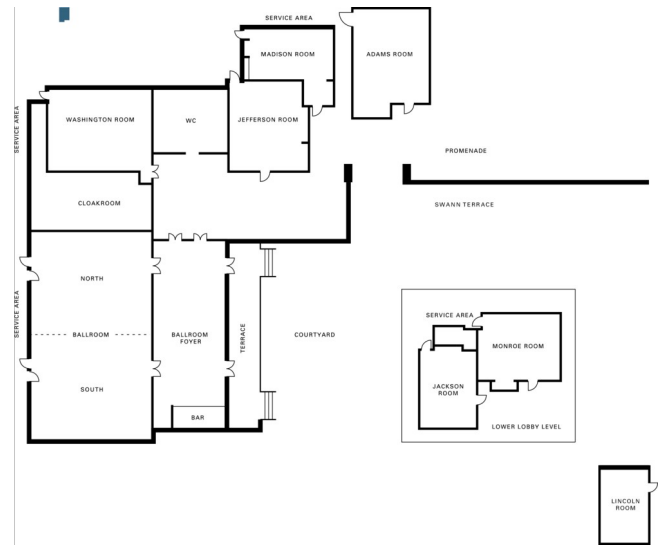


ADAMS ROOM

Dimensions 29 x 25 ft
8.8 x 7.6 m
Size 725 sq.ft.
67 m²
Height 11.6 ft
3.5 m

Capacities

Classroom 40
Hollow square 28
U Shape 24
Theatre 60
Reception 75
Banquet Rounds 50



JEFFERSON ROOM

Dimensions 28 x 23 ft
8.5 x 7.0 m
Size 644 sq.ft.
60 m²
Height 10 ft
3 m

Capacities

Classroom 40
Hollow square 28
U Shape 26
Theatre 60
Reception 60
Banquet Rounds 40



MADISON ROOM

Dimensions 16 x 26 ft
4.9 x 7.9 m
Size 416 sq.ft.
39 m²
Height 9.6 ft
3 m

Capacities

Boardroom 20



MONROE ROOM

Dimensions 20 x 24 ft
6.1 x 7.3 m
Size 480 sq.ft.
44 m²
Height 10 ft
3 m

Capacities

Classroom 30
Hollow square 28
U Shape 22
Theatre 50
Reception 60
Banquet Rounds 40



JACKSON ROOM

Dimensions 22 x 18 ft
6.7 x 5.5 m
Size 396 sq.ft.
37 m²
Height 10 ft
3 m

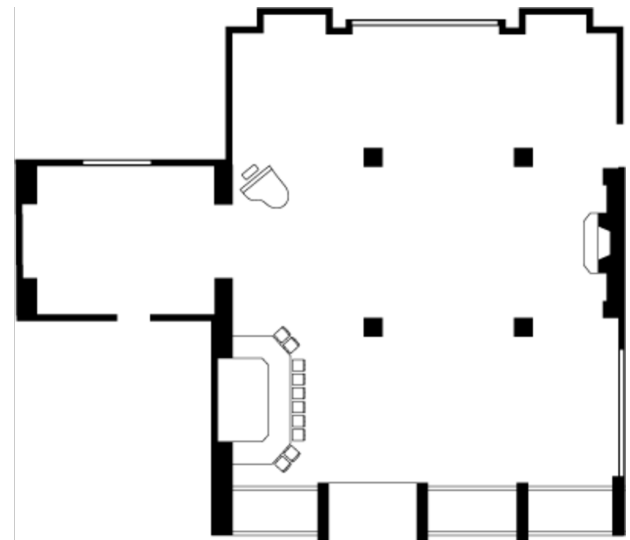
Capacities

Classroom 24
Hollow square 22
U Shape 17
Theatre 45
Reception 25
Banquet Rounds 30



SWANN RESTAURANT

Dimensions -
-
Size 3328 sq.ft.
309 m²
Height 9 ft
2.7 m



GUEST ROOMS, SUITES AND PRIVATE RESIDENCES OVERVIEW

The eight-storey, five-star Four Seasons Hotel Philadelphia offers 364 elegant guest rooms, including 96 luxury suites, in Center City near the Franklin Institute. Many have balconies overlooking Logan Square, while others face the Hotel's own peaceful garden courtyard with its cascading waterfall. All have windows that open for fresh air, offering views that underline a delightful sense of place.

Every luxury Hotel room is comfortably equipped with a desk, a flat-screen television and multi-line telephones with voice mail.

<i>Room Category</i>	<i>#</i>	<i>Beds</i>	<i>Size</i> <i>(sq ft)</i>	<i>View</i> <i>(m2)</i>	<i>View</i>
- Premier Four Seasons Executive Suite	5	1 King	1,100	102	Multi-directional views of Logan Circle
- Four Seasons Executive Suite – Logan Circle and Swann Fountain View	38	1 King	750	70	Logan Circle and Swann Fountain
- Four Seasons Executive Suite – City or Courtyard View	43	1 King or 2 double	750	70	City or courtyard
- Fountain-View Room	46	1 King or 2 double	500	46	Swann Fountain and Logan Circle
- Deluxe Room	85	1 King or 2 double	500	46	City views or inner courtyard
- Superior Room	137	1 King or 2 double	500	46	Academy of Natural Science, city or courtyard
- Accessible Four Seasons Executive Suite – City or Courtyard View		1 King	750	70	City or courtyard
- Accessible Fountain-View Room		2 double	500	46	Swann Fountain and Logan Circle
- Accessible Fountain-View Room with Roll-in Shower		2 double	500	46	Swann Fountain and Logan Circle
- Accessible Superior Room		1 King or 2 double	500	46	Academy of Natural Science, city or courtyard
- Accessible Superior Room with Roll-in Shower		1 King or 2 double	500	46	Academy of Natural Science, city or courtyard
- Presidential Suite	1	1 King	2,300	213	Logan Circle
- Royal Suite	1	1 King	2,000	185	Treetops of the Benjamin Franklin Parkway to the Museum of Art
- Liberty Suite	7	1 King	1,500	139	Logan Circle
- Logan Suite	1	1 King	1,100	102	Panoramic views of Logan Circle and Benjamin Franklin Parkway
- Accessible Liberty Suite		1 King	1,500	139	Logan Circle

Guest Room Overview

At a spacious 390 square feet (36 square metres), Four Seasons guest rooms vary by floor and view. Superior Rooms are popular for their air of reflective quiet, with views of the Academy of Natural Science, the city, courtyard or garden. Deluxe Rooms feature views of the city or the inner courtyard. Fountain-View Rooms overlook Logan Circle and Swann Fountain. Select rooms in all categories are equipped for wheelchair use.

At almost twice the size of the guest rooms, the stylish Four Seasons Executive Suites overlook either Logan Circle and Swann Fountain or the city or inner courtyard. Several include a balcony. Premier Four Seasons Executive Suites are larger and offer the best views of Logan Circle and the city from their corner locations.

Suites Overview

The eighth-floor Logan Suite is a delightful corner aerie with panoramic views over Logan Circle and the cultural icons lining Benjamin Franklin Parkway. The one- or two-bedroom Liberty Suites are beautifully decorated with outstanding views of Logan Circle. The unique Royal Suite and the opulent Presidential Suite, both available with one or two bedrooms, offer elegant living and dining rooms, pantries and inviting views from the Hotel's top floors.

PREMIER FOUR SEASONS EXECUTIVE
SUITE

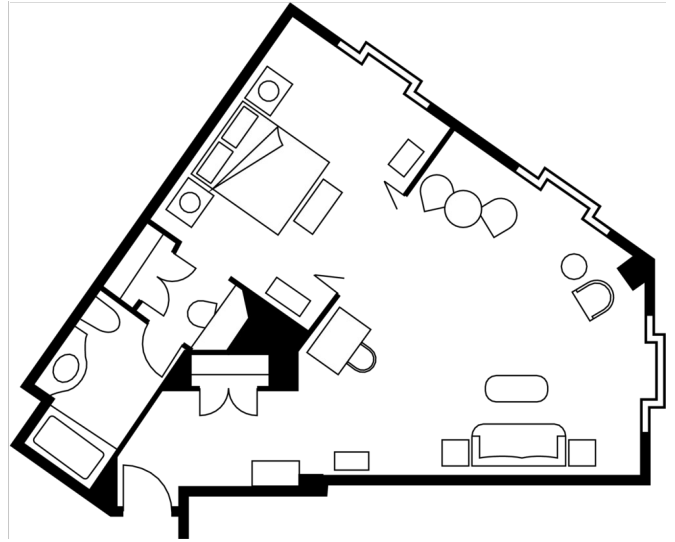
Number 5
Beds King bed
Size 1,100 sq ft
102 m²

Location

Corners of the building

View

Multi-directional views of Logan Circle



FOUR SEASONS EXECUTIVE SUITE –
LOGAN CIRCLE AND SWANN
FOUNTAIN VIEW

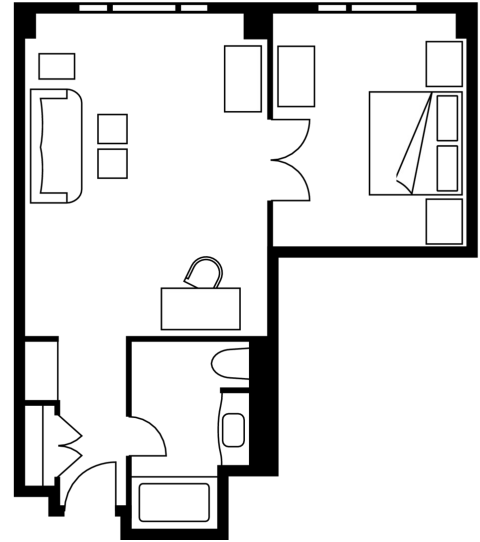
Number 38
Beds King bed
Size 750 sq ft
70 m²

Location

Throughout the Hotel

View

Logan Circle and Swann Fountain



FOUR SEASONS EXECUTIVE SUITE –
CITY OR COURTYARD VIEW

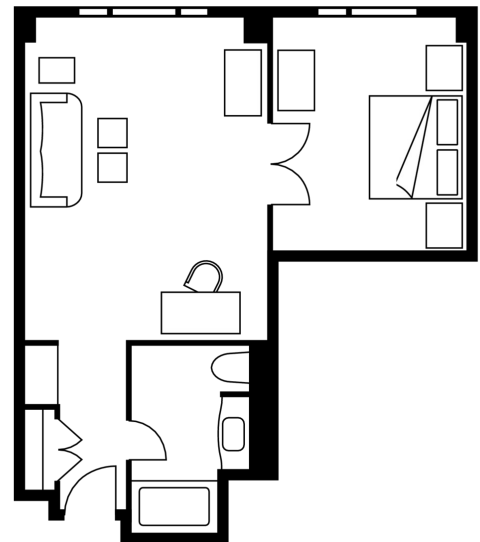
Number 43
Beds King or two double beds
Size 750 sq ft
70 m²

Location

Throughout the Hotel

View

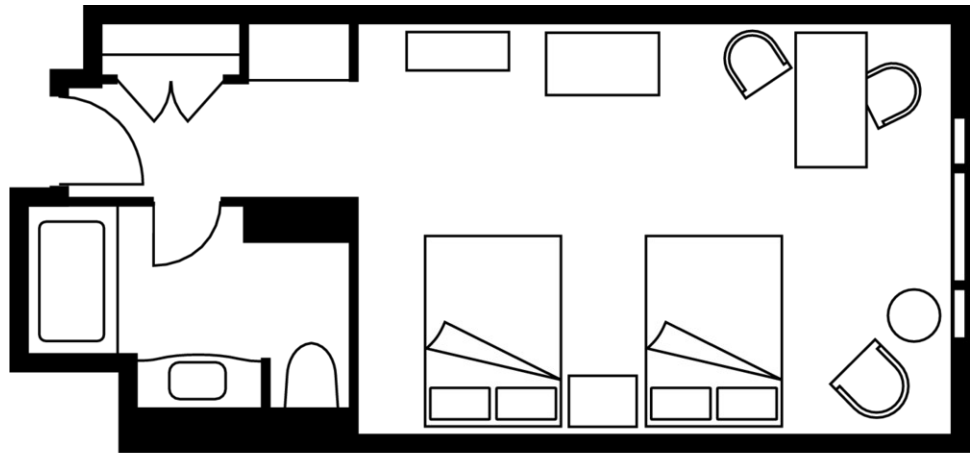
City or courtyard



DELUXE ROOM

Number 85
Beds King or two double beds
Size 500 sq ft
46 m²

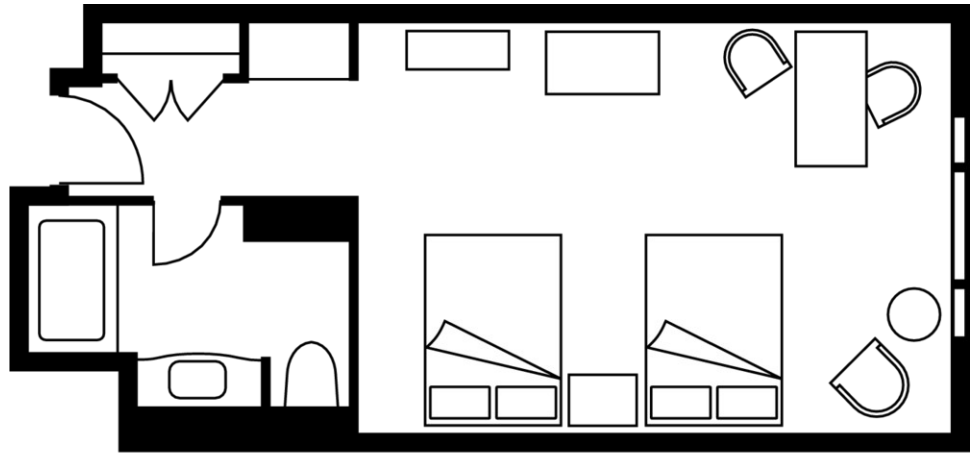
Location
Higher floors of the Hotel
View
City views or inner courtyard



SUPERIOR ROOM

Number 137
Beds King or two double beds
Size 500 sq ft
46 m²

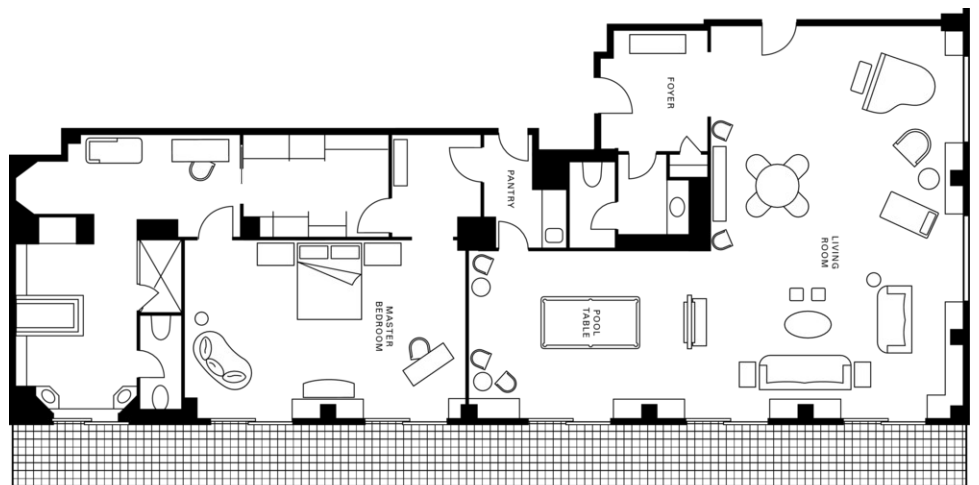
Location
Middle floors of the Hotel
View
Academy of Natural Science, city or courtyard



PRESIDENTIAL SUITE

Number 1
Beds King bed
Size 2,300 sq ft
213 m²

Location
7th floor
View
Logan Circle



ROYAL SUITE

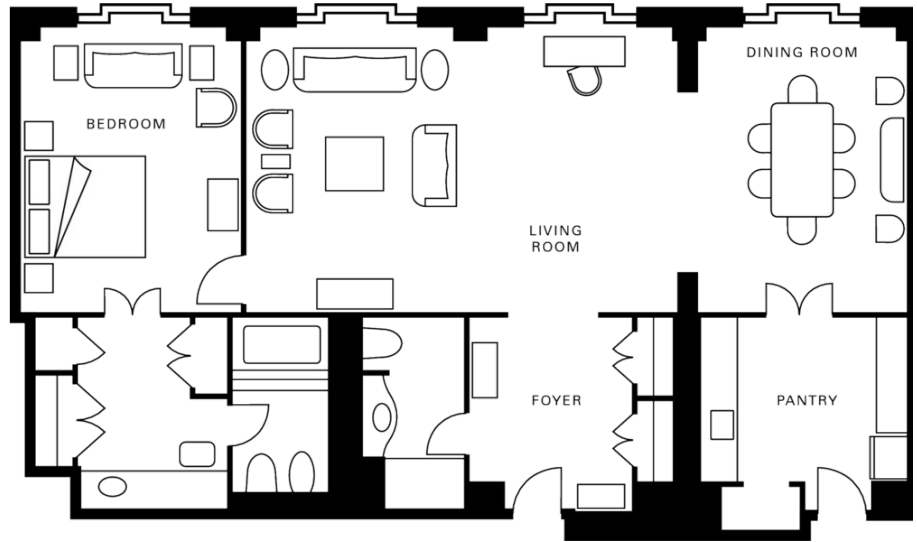
Number 1
Beds King bed
Size 2,000 sq ft
185 m²

Location

8th floor

View

Treetops of the Benjamin Franklin
Parkway to the Museum of Art



LIBERTY SUITE

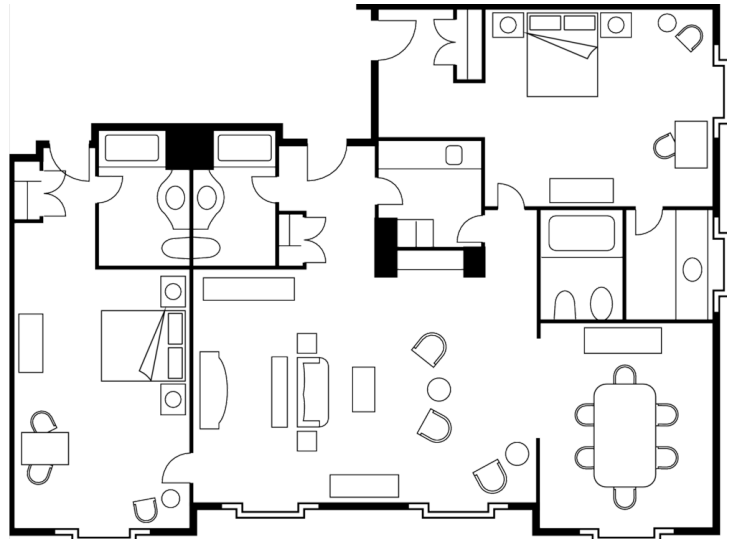
Number 7
Beds King bed
Size 1,500 sq ft
139 m²

Location

Throughout the Hotel

View

Logan Circle



AMENITIES

- All news cable network
- CD clock radio
- Complimentary newspaper with breakfast
- Down pillows
- Fax machine on request
- Hair dryer
- Hypo-allergenic pillows on request
- In-room safe
- Interactive television
- Multi-line telephone(s) with voicemail
- Refrigerated private bar
- Thick terry bathrobes
- Twice-daily housekeeping service
- Wired or wireless Internet access

GUEST SERVICES

- 24-hour In-Room Dining
- 24-hour laundry/dry-cleaning/pressing
- 24-hour multilingual Concierge
- Complimentary overnight shoeshine
- Limousine service
- Non-smoking rooms
- One-hour pressing
- Private dining room
- Services and amenities for younger guests
- Umbrellas
- Self-parking
- Valet parking

VIP GIFTS AND WELCOME AMENITY

Special arrangements can be made for clients to purchase welcome amenities for their VIP guests.

DINING HOURS OF OPERATION

Fountain Restaurant

Breakfast

Sunday	7:00 am - noon
Monday to Friday	6:30 am - 11:00 am
Saturday	7:00 am - 11:00 am

Lunch

Monday to Saturday	11:00 am - 2:00 pm
--------------------	--------------------

Dinner

Tuesday to Saturday	6:00 pm - 10:00 pm
---------------------	--------------------

Swann Lounge

Brunch

Sunday	10:00 am - 2:00 pm
--------	--------------------

High tea

Monday to Friday	2:00 pm - 3:30 pm
Saturday	3:00 pm - 4:30 pm

All-day dining and cocktail

Sunday	2:00 pm - 1:00 am
Monday to Thursday	3:00 pm - 1:00 am
Friday and Saturday	3:00 pm - 2:00 am

In-Room Dining

Breakfast

Every day	5:00 am - 11:30 am
-----------	--------------------

Lunch

Every day	11:30 am - 11:00 pm
-----------	---------------------

Dinner

Every day	6:00 pm - 10:30 pm
-----------	--------------------

Late night

Every day	11:00 pm - 5:30 am
-----------	--------------------

Children's and pre-teens' menu

Every day	6:00 am - 10:30 pm
-----------	--------------------

DINING

Among Philadelphia's most desirable meeting places for business breakfasts, chic lunches and formal dining, the acclaimed Fountain Restaurant in Four Seasons Hotel Philadelphia includes private dining for 14 in the restaurant's exclusive Logan Room. A baby grand piano, comfortable couches and marble-topped tables are the signatures of the sumptuous Swann Lounge.

RESTAURANTS

Fountain Restaurant

A recipient of Forbes Travel Guide's 2010 Five Star award, Fountain Restaurant has earned national acclaim and a strong following. Imaginative and impeccable cuisine is served in a warm atmosphere that features a view of the stunning bronzes that comprise Alexander Stirling Calder's Swann Memorial Fountain.

- Cuisine: American with French influence
- Size: 10,000 sq ft / 92.9 m²
- Indoor seating: 107, including the intimate 14-person private Logan Room

LOUNGES

Swann Lounge

A baby grand piano, comfortable couches and marble-topped tables are the signature of the Swann Lounge. Afternoon tea, cocktails and lavish dessert and Sunday brunch buffets are served.

- Cuisine: American with French influence
- Indoor seating: 82, with eight additional stools at the bar

RECREATION FACILITIES

Opportunities to unwind at Four Seasons include relaxing treatments in the elegant Spa, a comprehensive workout in the fitness centre or leisurely laps in the tranquil indoor pool beside the attractively landscaped pool deck and trickling fountain.

SPA SERVICES

A tranquil oasis dedicated to well-being, the Spa offers unrivalled luxury, privacy and comfort in which to unwind and refresh in Philadelphia's Center City. The Spa provides everything from invigoration to pampering in its array of massages, body treatments and European skin therapies, all by appointment. The experience at our magnificent location is enhanced by a whirlpool, sauna, indoor pool and personalised Four Seasons service.

- Products: Naturopathica, Aromatherapy, MoroccanOil, Archepelago, IS Clinical

FITNESS FACILITIES

Take advantage of the fitness centre at Four Seasons Hotel Philadelphia. After your workout, enjoy a sauna or whirlpool in the Spa. Located on the Lower Lobby level, in the Spa, the fitness centre is open daily to guests 13 years of age and older.

- Size: 1,700 sq ft / 158 m²

POOL

Located in the Spa, the tranquil indoor pool accommodates laps and is kept at a comfortable average temperature of 29°C (84°F). The pool deck is attractively landscaped with tropical plants and a trickling fountain. A whirlpool is nearby.

GOLF

Ramblewood Country Club

The club offers three nine-hole courses with terrain that varies in difficulty. Golfers can test their skills on open fairways and large, gently undulating greens or choose a narrower course. Numerous creeks meander through the club's longest course, which features the greatest number of water hazards, making for a challenging game.

LOCAL ACTIVITIES

Please contact the Concierge for more information on the following activities:

- Bicycling
- Boating and tubing on the Delaware River in Bucks County
- Hiking and jogging
- Sailing and sculling

Rooms	Dimensions		Size		Height		Classroom	Hollow square	U-shape	Theatre	Reception	Banquet rounds	Conference/boardroom
	(ft)	(m)	(sq ft)	(m2)	(ft)	(m)							
- Ballroom	54 x 81	16.5 x 24.7	4,374	406	13.6	4	250	-	-	480	500	380	-
- Ballroom North	54 x 39	16.5 x 11.9	2,106	196	13.6	4	135	70	61	250	250	190	58
- Ballroom South	54 x 39	16.5 x 11.9	2,106	196	13.6	4	135	70	61	250	250	190	58
- Ballroom Foyer	25 x 66	7.6 x 20.1	1,650	153	10.6	3	-	-	-	-	380	80	-
- Terrace	66 x 11.4	20 x 3.5	746	69	-	-	-	-	-	-	125	-	-
- Washington Room	33 x 42	10 x 13	1,386	129	10	3	80	52	41	144	150	90	34
- Adams Room	29 x 25	8.8 x 7.6	725	67	11.6	3.5	40	28	24	60	75	50	22
- Jefferson Room	28 x 23	8.5 x 7.0	644	60	10	3	40	28	26	60	60	40	24
- Madison Room	16 x 26	4.9 x 7.9	416	39	9.6	3	-	-	-	-	-	-	20
- Lincoln Room	24 x 22	7.3 x 6.7	528	49	9	2.7	-	-	-	-	-	-	12
- Swann Restaurant	-	-	3328	309	9	2.7	-	-	-	-	-	-	-
- Monroe Room	20 x 24	6.1 x 7.3	480	44	10	3	30	28	22	50	60	40	22
- Jackson Room	22 x 18	6.7 x 5.5	396	37	10	3	24	22	17	45	25	30	18
- Boardrooms (3)	25 x 16	7.6 x 4.9	400	37	8.4	2.6	-	-	-	-	-	-	16
- Boardrooms (2)	26 x 14	8 x 4.3	364	34	8.6	2.6	-	-	-	-	-	-	12