

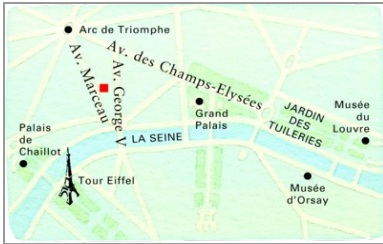


Quick Reference Guide

Last updated May 8, 2012 | For additional information please contact the hotel directly

Four Seasons George V Paris
31, avenue George V, 75008 Paris, France
Tel 33.0.1.49.52.70.00 | Fax 33.0.1.49.52.70.10 | Res 33.0.1.49.52.71.00

www.fourseasons.com/paris



Steps from the Champs-Élysées, with private terraces that command views of all Paris and vibrant facilities accented by 17th-century tapestries and floral mastery, Four Seasons Hotel George V Paris has come to define fine service in the City of Light and around the world.

31, avenue George V
75008 Paris, France
Tel 33.0.1.49.52.70.00
Fax 33.0.1.49.52.70.10
Res 33.0.1.49.52.71.00

AIRPORTS

- Charles de Gaulle International Airport (CDG): 1 hour (25 kilometres/15 miles)
- Orly International Airport (ORY): 40 minutes (15 kilometres/9.3 miles)

TABLE OF CONTENTS

- 2 *Introduction*
- 4 *Destination*
- 8 *Conference Facilities*
- 14 *Guest rooms, Suites and Private Residences*
- 18 *Dining*
- 19 *Recreational Facilities*
- 20 *Incentive Activities*
- 21 *Appendix: Conference Chart*



A Paris landmark since 1928, this historic building has been lovingly restored to reflect the very highest Four Seasons standards of comfort and convenience. Of the Hotel's 245 spacious guest rooms, including 59 suites, 30 feature a private city-view terrace.

Fine dining at the Michelin-starred Le Cinq restaurant is a coveted occasion. La Galerie and its summer seating in the courtyard terrace offer elegant places to share a meal or afternoon tea. Le Bar is a destination for Parisians and visitors alike.

Four Seasons gives guests access to the most luxurious hotel spa in Paris, with a full treatment menu offering everything from massages and body treatments to salon services. Adjacent is an extensive health club, encompassing training facilities, saunas and steam rooms. The swimming pool and whirlpool are wrapped in trompe l'oeil murals of the gardens of Versailles.

For business and social gatherings, Four Seasons Hotel George V, Paris presents the finest

selection of its kind in Paris, with 1,269 square metres (13,596 square feet) of meeting and function spaces – including one of the most beautiful ballrooms in the city.

TRANSPORTATION

All international airlines and Air France are served by Charles de Gaulle Airport, 25 kilometres (15 miles) from the Hotel. Domestic flights by Air France and some European airlines use Orly Airport, 15 kilometres (9.3 miles) from the Hotel.

All types of rental cars are available, as well as taxi and limousine services.

Parking is available across the street from the Hotel.

Airport greeting service

Four Seasons personnel will meet you as you step off the plane and escort you through immigration. For information or to book this service, please contact the Hotel; fee may apply.

WEATHER CHART

Month	°C		°F	
	Highs/Lows		Highs/Lows	
January	5	/ 0	41	/ 32
February	8	/ 5	46	/ 41
March	15	/ 7	59	/ 45
April	20	/ 10	68	/ 50
May	23	/ 15	73	/ 59
June	27	/ 18	81	/ 64
July	30	/ 20	86	/ 68
August	32	/ 22	90	/ 72
September	25	/ 18	77	/ 64
October	20	/ 15	68	/ 59
November	12	/ 7	54	/ 45
December	10	/ 5	50	/ 41

DESTINATION

Inimitable, incomparable, unforgettable ... Paris has it all. Two thousand years of history, art and architecture are on display year-round. The best way to experience the city is to explore it on foot.

At Four Seasons Hotel George V Paris, you are perfectly placed to do exactly that. Here, you are a stroll from the River Seine or the Champs-Élysées and a short walk from the Arc de Triomphe or the Eiffel Tower. Within a delightful 10-minute walk, you could be shopping for fashions from the most revered designer names in Paris – or the world.

WEATHER

Springtime in Paris is world renowned for its warmth and lush beauty. Dress for summer days of sightseeing along the River Seine – temperatures are around 30°C (86°F) in July. Prepare for temperate winter months with layers of heavier clothing.

LOCAL ATTRACTIONS AND ACTIVITIES

At Four Seasons, you enjoy a unique vantage point from which to explore the sights, sounds and experiences around you. We hope the highlights of local attractions below help simplify your planning. Please let us know how else we can assist you.

Within a 10-minute walk of the Hotel

The Golden Triangle :

- The Golden Triangle is renowned for high-fashion boutiques: Jean-Paul Gauthier, Givenchy, Christian Dior, Emmanuel Ungaro, Chanel, Nina Ricci and more. Also not far from the Hotel are Paris' famous department stores: Galeries Lafayette, Le Printemps and Le Bon Marché, not to mention specialty stores Louis Vuitton, Hermès and Guerlain.

Within a 15-minute walk of the Hotel

Arc de Triomphe:

- Erected by Napoleon as a tribute to his own glory, the Arc de Triomphe sits at the head of the Champs Élysées. Visitors enjoy panoramic views of Paris from the monument's rooftop. The Arc de Triomphe is where the Unknown Soldier was buried after World War I, and is the starting or ending point of most French parades.

Within a 20-minute walk of the Hotel

The Eiffel Tower:

- Built in 1889 to celebrate the first centenary of the French Revolution, the Eiffel Tower is the true symbol of Paris. Views are breathtaking from any point on the tower. On the second floor, visitors may enjoy dining at the renowned Jules Verne restaurant.

Within a 10-minute drive of the Hotel

The Louvre:

- The Louvre, the world's largest museum, houses French, Italian, Spanish, Flemish and English artefacts from the Middle Ages through the 18th century. The Mona Lisa resides here as well as some of Vermeer's very rare paintings. A separate wing has

fabulous antique collections from ancient Mediterranean civilizations. At night, the facade, courtyards and I. M. Pei's famous pyramid are all beautifully lit.

Within a 15-minute drive of the Hotel

Musée d'Orsay:

- Housed in a restored 19th-century railway station, the Musée d'Orsay is dedicated to the 19th century. Wonderful Impressionist works are on display: Monet, Renoir, Caillebotte, Manet, Sisley, Gauguin and Degas.

Pompidou Centre:

- The once-controversial Pompidou Centre has completed a major renovation. It is still one of the most advanced and unique museums in Europe, housing an extensive modern art collection as well as a large public library. Atop the building is the trendy Café Georges and a terrace commanding panoramic views of the city skyline.

St. Germain-des-Prés:

- Trendy shops, cafés, night clubs and monuments abound at St. Germain-des-Prés, a former convent. Nearby is Reine Marie de Medici's Luxembourg Palace, now the seat of the French High Assembly, the Senate. The wonderful gardens are open to the public year-round.

The Left Bank, or Latin Quarter:

- One of Paris' oldest districts, the Left Bank, or Latin Quarter, is also called the brain of the city: La Sorbonne University and many prestigious colleges are all located in this area. Other monuments include the Panthéon, the Roman Bath of Cluny and Lutetia's arena. Small book and souvenir stands line the area just above the banks of the Seine.

Parc des Princes:

- Parc des Princes is the home stadium of the famous French football team, Paris Saint-Germain. The stadium was designed in 1972 and is now undergoing equipment and fittings renovation. Parc des Princes can welcome 49,000 visitors. While it is smaller than Stade de France, it is used for the same types of events. Located by a metro direct line that is five minutes by foot from the Hotel.

Within a 20-minute drive of the Hotel

Sacré Coeur de Montmartre:

- Sacré Coeur de Montmartre offers the most wonderful scenic view of the city skyline. Next to the dramatic white church is the Place du Tertre. This pedestrian square is home to hundreds of artists.

Notre Dame Cathedral:

- All French roads start at the doorstep of Notre Dame Cathedral on Ile de la Cité. Erected in the 12th century, it has a flamboyant Gothic style, and now boasts a free organ concert every Sunday afternoon. Beyond Ile de la Cité stands the lovely Ile Saint Louis. The tiny island has a number of 16th and 17th-century mansions, all listed in the National Inventory of Bâtiments de France.

Le Marais:

- Le Marais is the historic district, first developed by Henri IV, and today restored to its former glory. The Place des Vosges is the city's most beautiful square – it dates back to the 17th century and has changed very little since Louis XIII.

Within a 25-minute drive of the Hotel

Stade Roland Garros:

- When France won the Davis Cup in 1927, Paris decided to build a tennis stadium worthy of its champions. Stade Roland Garros was completed nine months later. Named after an airforce hero of the First World War, the stadium bears the traces of art-deco style. Major renovation was done in 1980 and a new round Centre Court was unveiled, with a seating capacity of 12,000. Over the years several new courts have been built to accommodate the increasing popularity of the stadium. Located about 25 minutes from the Hotel; easiest access is by metro.

Palais Omnisport de Paris Bercy:

- Palais Omnisport de Paris Bercy has venues for a range of sports from ice skating to basketball, indoor tennis and wind surfing. Located 25 minutes from the Hotel by car or metro. (Metro direct from station George V, take Line 1).

Within a 30-minute drive of the Hotel

The Château de Versailles:

- The Château de Versailles was the home of the Royal French Court for three centuries. Plan a full day to visit the private apartments of the King and Queen, the Galerie des Glaces, the Opera, the Winter Garden, the Trianons and Marie Antoinette's famous Bergerie. The afternoon should be left open to enjoy the Domaine du Parc Royal de Versailles and the spectacular fountains. Open daily from May to October.

Stade de France:

- The Stade de France took 31 months to build: it was finished in January 1998 and inaugurated by the President Jacques Chirac. The largest stadium in France, it has 60,000 seats no further away than 60 metres (197 feet) from the border of the football field. The remaining seats are 85 metres (279 feet) from the field. Thirty-five metres (115 feet) high with a surface of 17 hectares (42 acres), the stadium is used for football matches, rugby, and other sporting events, as well as major musical concerts. Tickets can be bought either by contacting the stadium directly or by asking the Concierge at the Hotel, who will be delighted to make the arrangements. Easiest access to the stadium is by metro: from the hotel there is one change and then the line runs direct. Trains leave every five minutes.

Within a 1-hour drive of the Hotel

Château de Chantilly:

- Built for King François I, in Renaissance style, the Château de Chantilly is the chic venue of famous Prix de Diane horse racing in June. On the way back, one should stop in Senlis, a charming medieval town just 45 minutes away from Paris.

Fontainebleau:

- Fontainebleau was the summer residence of the French kings. It is where Napoleon

spent his last night before starting his exile on the island of St Hélène. South of Fontainebleau is Barbizon, where Impressionist painters gathered in the mid-1800s.

Disneyland Paris:

- Disneyland Paris is the first European amusement park to have visitors from every corner of the globe. The park is composed of Discoveryland, Fantasyland, Adventureland, Frontierland and Disney Village - an entertainment centre offering a variety of stores and restaurants.

Disneyland is located at the stop on direct line (A) from Charles de Gaulle Etoile, a metro station situated about 10 minutes by foot from the Hotel. The trip takes approximately 40 minutes.

Tours, Blois and the Château Country:

- Tours, Blois and the château country are some of France's most romantic and beautiful regions. Start in Tours to visit Amboise, Chenonceau, Chambord and finish in Blois. The architecture of the châteaux is superb.

Within a 2-hour drive of the Hotel

D-Day Landing Beaches:

- The famous D-Day landing beaches are where many lost their lives in June 1944. Visiting these beaches and the military cemeteries nearby is a moving and memorable experience. The town of Caen has a wonderful memorial museum.

The Champagne Region:

- The Champagne region is a delightful destination for a wine country discovery day. Start with a visit to the Cathedral of Reims, the place where most of the French kings were crowned. Continue with a visit to the vineyards and sample wonderful champagnes at some of the finest cellars in the region: Moët & Chandon, Mumm and Laurent Perrier.

Within a 2.5-hour drive of the Hotel

Mont Saint Michel:

- Mont Saint Michel is the most photographed monument in the world. Set on an island, the 14th-century monastery is surrounded by half-timbered houses and a walled town with superb medieval ramparts.

CONFERENCE FACILITIES OVERVIEW

Total Space	1,269 m ² 13,596 sq.ft.
Largest Ballroom	465 m ² 5,005 sq.ft.
Meet and Feed (max. capacity)	250
Breakouts	6
Banquet (max. capacity)	350
Outdoor Banquet (max. capacity)	-
Private Dining (max. capacity)	25

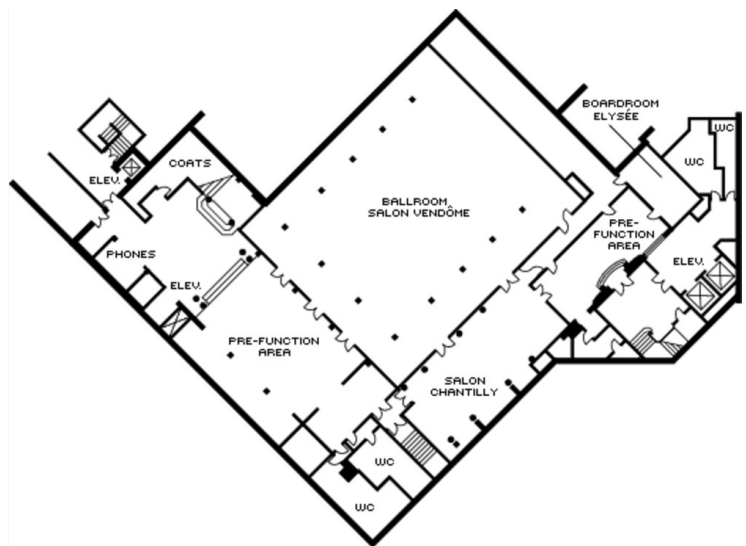
CONFERENCE FACILITIES

Sparkling with light and objets d'art, this legendary palace hotel comprises the widest, most advanced array of luxury meeting rooms in Paris, with superb flexibility for any social or business gathering.

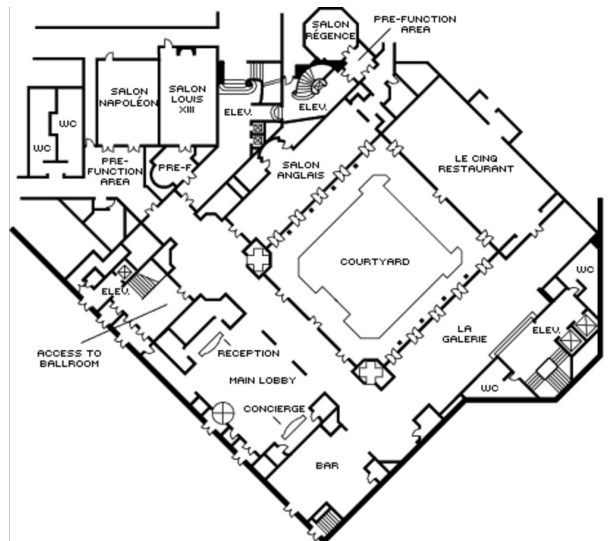
The unique choices at Four Seasons Hotel George V, Paris include one of the most beautiful ballrooms in the city, a salon commanding views of the Hotel's elegant courtyard and two rooms with antique fireplaces and tapestries. The facilities also feature state-of-the-art lighting, sound and audiovisual capabilities.

Best of all, events are brought to life with exceptional cuisine and warm, attentive Four Seasons assistance and support.

Lower lobby level



Lobby level



TECHNICAL ASSISTANCE

PSAV Presentation Services staff are available on-site and can accommodate your needs

for state-of-the-art equipment. The Hotel continually updates its presentation equipment with PSAV and keeps pace with changing technology. Learn more.

MUSIC AND ENTERTAINMENT

Our Conference Service Manager will be happy to assist with setting up any type of music or entertainment for your meeting.

RECEIVING AND MAINTENANCE

The Hotel features a full-service shipping and receiving office.

All packages should be sent to the attention of the group's name and its Conference Service Manager. They will be stored in a separate conference storage area. Limited space is available for the storage of large items.

Maintenance

The Engineering Department is available 24 hours a day for general assistance with lighting, room temperature control and minor repairs.

DESTINATION MANAGEMENT

BUSINESS SERVICES

Around the clock, Four Seasons can assist you with business, entertainment or travel arrangements through the Business Center and resourceful, multilingual Concierge.

- 24-hour business services
- Airline reservation service
- Audiovisual equipment
- Cellular telephones
- Computers
- Japanese translation and interpretation service
- Secretarial service
- Translation and interpretation service
- Wired or wireless Internet access in meeting rooms

SPOUSE PROGRAMMES

CHILDRENS AND FAMILY PROGRAMMES

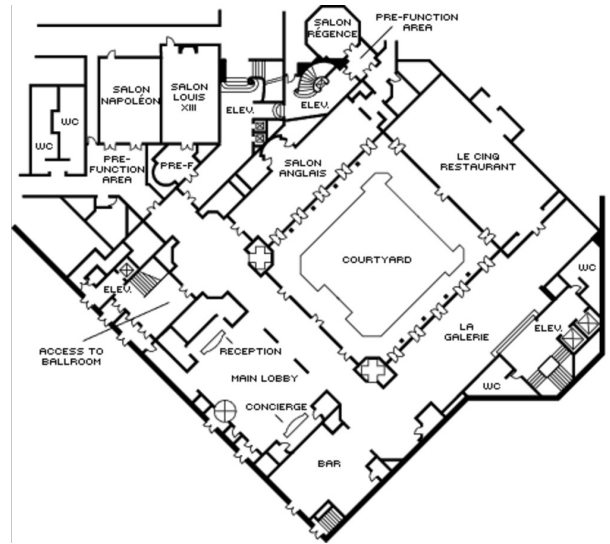
We would be pleased to help arrange appropriate activities for visiting families.

SALON ANGLAIS

Dimensions	19.9 x 6.4 m 65.3 x 21 ft
Size	127 m ² 1,367 sq.ft.
Height	5.2 m 17.1 ft

Capacities

Classroom	60
Hollow square	48
U Shape	44
Theatre	140
Reception	120
Banquet Rounds	100
Boardroom	60

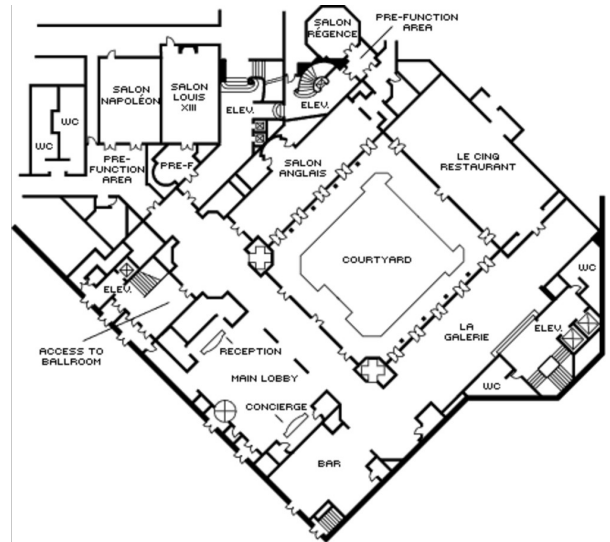


SALON NAPOLEÓN

Dimensions	9.9 x 7.4 m 32.5 x 24.3 ft
Size	73 m ² 786 sq.ft.
Height	3.4 m 11.2 ft

Capacities

Classroom	40
Hollow square	38
U Shape	24
Theatre	60
Reception	70
Banquet Rounds	50
Boardroom	24

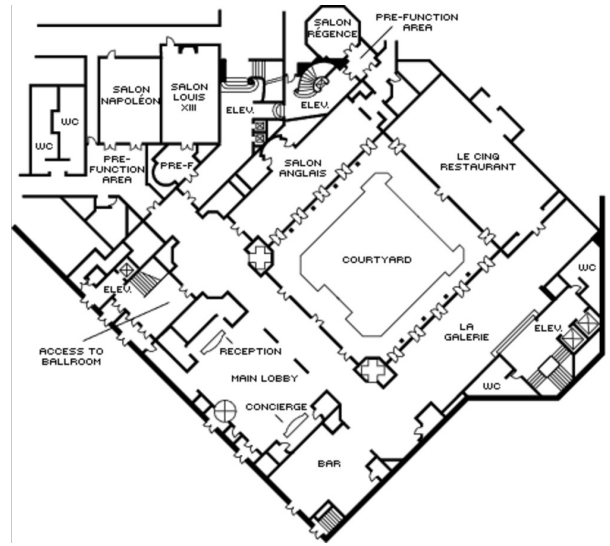


SALON LOUIS XIII

Dimensions	10.6 x 7.4 m 34.9 x 24.3 ft
Size	78 m ² 840 sq.ft.
Height	5.6 m 18.4 ft

Capacities

Classroom	45
Hollow square	30
U Shape	24
Theatre	60
Reception	70
Banquet Rounds	50
Boardroom	24

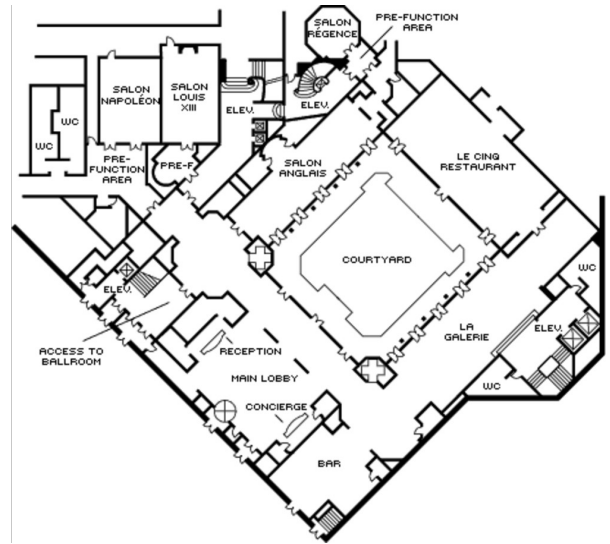


SALON RÉGENCE

Dimensions	6.1 x 6.1 m 20 x 20 ft
Size	37 m ² 400 sq.ft.
Height	3.3 m 10.8 ft

Capacities

Classroom	18
Hollow square	16
U Shape	15
Theatre	20
Reception	20
Banquet Rounds	16
Boardroom	16

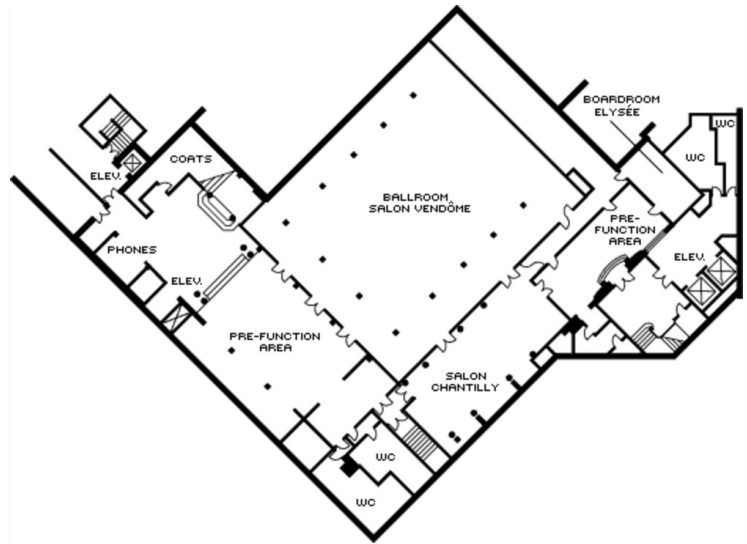


SALON ELYSÉE

Dimensions	7.7 x 4.6 m 25.3 x 15.1 ft
Size	35 m ² 377 sq.ft.
Height	2.7 m 8.8 ft

Capacities

Classroom	12
Theatre	20
Reception	20
Banquet Rounds	8
Boardroom	12

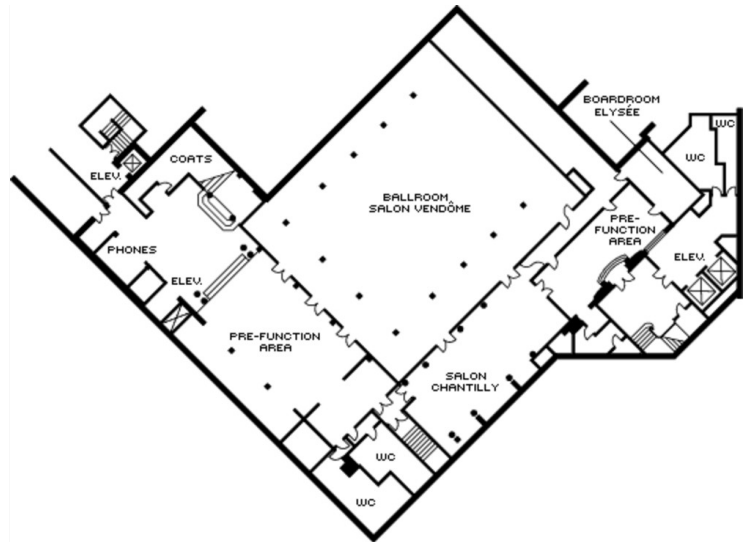


SALON VENDÔME

Dimensions	24.6 x 18.9 m 80.9 x 62 ft
Size	465 m ² 5,005 sq.ft.
Height	4.6 m 15.1 ft

Capacities

Classroom	215
Hollow square	78
U Shape	60
Theatre	450
Reception	450
Banquet Rounds	350
Boardroom	54

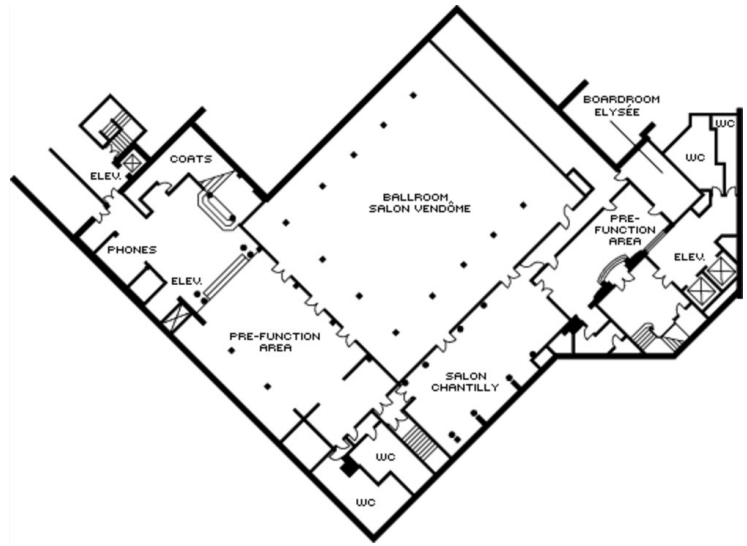


FOYER VENDÔME (SALON AUTEUIL)

Dimensions	23.8 x 8 m
	78 x 26.3 ft
Size	190 m ²
	2,045 sq.ft.
Height	5.7 m
	18.8 ft

Capacities

Classroom	63
Hollow square	40
U Shape	36
Theatre	160
Reception	200
Banquet Rounds	110
Boardroom	30

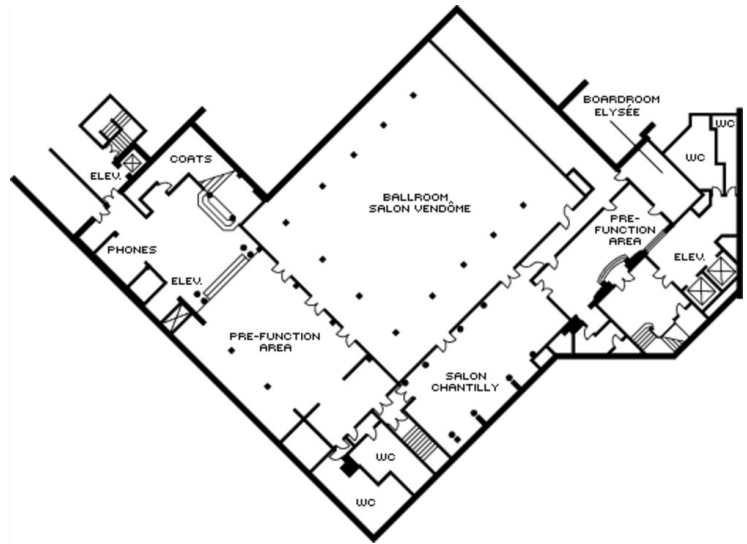


SALON CHANTILLY

Dimensions	17.3 x 7.4 m
	56.9 x 24.1 ft
Size	131 m ²
	1,410 sq.ft.
Height	2.6 m
	8.6 ft

Capacities

Classroom	81
Hollow square	57
U Shape	42
Theatre	140
Reception	140
Banquet Rounds	100
Boardroom	42



GUEST ROOMS, SUITES AND PRIVATE RESIDENCES OVERVIEW

Four Seasons Hotel George V Paris, an eight-storey landmark 1928 building, offers 244 guest rooms, nearly one-quarter of which are suites. All sparkle with unique architectural details and many feature private terraces overlooking the world's most romantic city.

Room Category	#	Beds	Size (m ²)	View (sq ft)
- Premier Room	24	1 King or 2 twin	50-60	538-65 Avenue George V, Marble Courtyard, 1 or Pierre 1er de Serbie Courtyard
- Deluxe Room	104	1 King or 2 twin	40-50	414-53 Pierre 1er de Serbie Avenue, Marble 8 Courtyard or Avenue George V
- Superior Room	57	1 King or 2 twin	37-40	398-43 Marble Courtyard or Avenues George 0 V and Pierre 1er de Serbie
- Four Seasons Suite	34	1 King or 2 twin	60-70	651-75 Pierre 1er de Serbie Avenue, Marble 4 Courtyard or Avenue George V
- Royal Suite	2	1 King . 2 or 2 King .	245	2,630 Historic Art Deco fountain of the Three Graces
- Presidential Suite	3	1 King . 2 2 King or 1 King and 2 twin .	200	2,153 Marble Courtyard and Avenue George V
- French Suite	1	1 King . 2 or 2 King .	139	1,498 Marble Courtyard
- English Suite	1	1 King . 2 2 King or 1 King and 2 twin .	120	1,295 Marble Courtyard
- Empire Suite	1	1 King . 2 2 King or 1 King and 2 twin .	127	1,368 Skyline view, including Eiffel Tower and Charles Garnier's Opera House
- Premier Suite	3	1 King or 2 twin	110-130	1,186-1 City Skyline and Marble Courtyard ,450
- One-Bedroom Deluxe Suite	11	1 King or 2 twin	80-100	850-1,0 City skyline on upper floors or 84 Marble Courtyard and West Garden on lower
- Duplex Suite	2	1 King Bed	90-110	950-1,1 City skyline including the Panthéon, 86 Opera House and the Grand Palais

Guest Room Overview

The generously proportioned Superior Rooms, larger Deluxe Rooms and extremely spacious Premier Rooms offer a variety of views including the peaceful Marble Courtyard and the Avenue George V. In Four Seasons Executive Suites, the bedroom and dressing area are discreetly secluded from the large period-style sitting room by sliding doors.

Suites Overview

Duplex Suites are spectacular two-level suites on the Hotel's top floors and provide breathtaking views of the city skyline. One-Bedroom Deluxe Suites and the significantly more spacious Premier Suites are graced with antiques and fine art; those on higher floors overlook the breathtaking Paris skyline.

One-of-a-kind choices include the Empire Suite, which features period sculptures and artwork dedicated to Napoleon and Josephine and a terrace view of the tower and skyline. With its columned foyer and splendid four-poster bed, the balconied English Suite or Suite Anglaise evokes an elegant London apartment in early 19th-century style. The

French Suite or Suite Française features two balconies overlooking the Marble Courtyard.

The three Presidential Suites evoke the ambience of a luxurious European residence, complete with marble fireplace in the living room, a dining room for eight and an in-suite fitness room. These beautiful suites overlook both the Marble Courtyard and Avenue George V. On the first floor, two antique-filled Royal Suites open to a private terrace and overlook the historic Art Deco Fountain of the Three Graces. Oversized spaces include a complete kitchen and a master bathroom equipped with steam room and sauna.

FOUR SEASONS SUITE

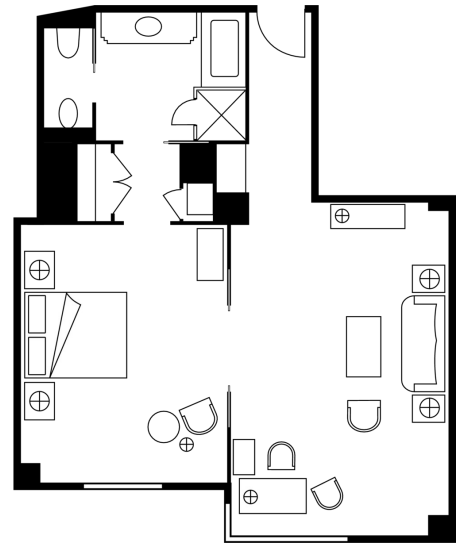
Number 34
Beds King or two twin beds
Size 60-70 m²
651-754 sq ft

Location

3rd to 8th floors

View

Pierre 1er de Serbie Avenue, Marble
Courtyard or Avenue George V



DELUXE ROOM

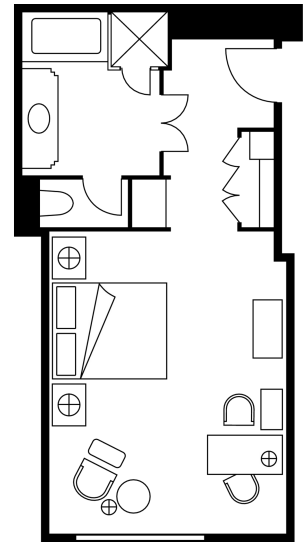
Number 104
Beds King or two twin beds
Size 40-50 m²
414-538 sq ft

Location

1st to 8th floors

View

Pierre 1er de Serbie Avenue, Marble
Courtyard or Avenue George V



SUPERIOR ROOM

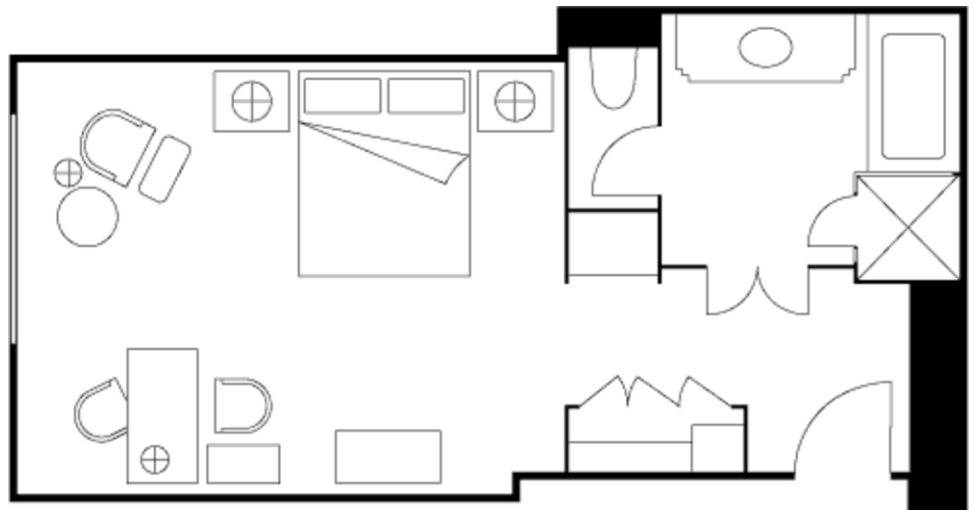
Number 57
Beds King or two twin beds
Size 37-40 m²
398-430 sq ft

Location

2nd to 5th floors

View

Marble Courtyard or Avenues George
V and Pierre 1er de Serbie



AMENITIES

- All news cable network
- CD player
- Clock radio
- Complimentary newspaper with breakfast
- Down pillows
- Fax machine on request
- Hair dryer
- Hypo-allergenic pillows on request
- In-room safe
- Interactive television
- Iron and ironing board on request
- Multi-line telephone(s) with voicemail
- Refrigerated private bar
- Thick terry bathrobes
- Twice-daily housekeeping service
- Wired or wireless Internet access

GUEST SERVICES

- 24-hour In-Room Dining
- 24-hour laundry/dry-cleaning/pressing
- 24-hour multilingual Concierge
- CD/DVD library
- Complimentary overnight shoeshine
- Gift shop
- Non-smoking rooms
- One-hour pressing
- Private dining room
- Restaurant
- Services and amenities for younger guests
- Umbrellas
- Valet parking

DINING HOURS OF OPERATION

Le Cinq

Breakfast 7:00 am - 10:00 am
(Monday to Friday)

Breakfast 7:00 am - 10:30 am
(Saturday and Sunday)

Lunch 12:30 pm - 2:30 pm

Dinner 7:00 pm - 10:30 pm

La Galerie

Breakfast

Every day 8:00 am - noon

Lunch

Every day noon - 3:00 pm

Afternoon tea

Every day 3:00 pm - 6:00 pm

Dinner

Every day 6:00 pm - midnight

Drinks only

Friday and Saturday midnight - 1:00 am

Le Bar

Sunday to Thursday 10:00 am - 1:30 am

Friday and Saturday 10:00 am - 2:30 am

In-Room Dining

Breakfast 6:00 am - 11:30 am

Lunch and dinner 11:30 am - 11:00 pm

Overnight 11:00 pm - 6:00 am

DINING

Explore the menu creations that have earned Le Cinq twin Michelin stars – or, for carefree selection, savour the tasting menus. Linger in the tasteful elegance of La Galerie for breakfast, lunch, dinner or afternoon tea. Or choose the conviviality of Le Bar for cocktails or light meals.

RESTAURANTS

Le Cinq

With beautiful views of the Hotel's courtyard and garden, Le Cinq is a very elegant dining room, dressed in grey and gold. The tablecloths, china and silver were all created specifically for this legendary hotel.

Menus draw upon classic French culinary techniques and also embrace newer, lighter cooking styles, always incorporating the freshest regional ingredients. A children's menu is available on request.

- Cuisine: French

LOUNGES

La Galerie

Both the heart and soul of the Hotel, La Galerie showcases beautiful Flemish tapestries, 19th-century paintings and furniture, as well as many exquisite objets d'art. The atmosphere is of elegance and genuine peace. A pianist plays every day at 3:00 pm. This is the best spot for people-watching. La Galerie can seat up to 45. In summer, La Galerie serves cocktails in the courtyard from 3:00 pm to 9:00 pm every day.

- Indoor seating: 45
- Outdoor seating: 50

Le Bar

The "rendezvous incontournable" for both residents and Parisians. The bar is decorated in beautiful mahogany and cognac colour woods. A large window opens on to the Avenue George V. Intimate conversations as well as enjoyable gatherings find a perfect setting at Le Bar every night of the week.

RECREATION FACILITIES

With the spa for luxurious pampering, the beautiful pool and whirlpool for aquatic pleasures and an extensive health club with every amenity, including steam rooms and saunas, Four Seasons Hotel George V Paris is a place to recharge in the heart of everything Paris has to offer. For help arranging your explorations of this timeless city, our multilingual Concierge is always ready to assist.

SPA SERVICES

Dressed in restful, muted colours and decorated with 18th-century prints, the Spa – the finest, most luxurious hotel spa in Paris – is a true retreat in the vibrant heart of the city. It offers a comprehensive menu of skin and body treatments, as well as saunas, whirlpools and a pool surrounded by trompe l’oeil gardens. The Spa also features private treatment rooms, a private VIP room with a whirlpool, sauna, steam bath and two massage beds and a relaxation room with three lounge chairs and private music stations.

FITNESS FACILITIES

The Health Club offers a full range of state-of-the-art exercise and cardiovascular equipment. There are separate men’s and women’s saunas, steam rooms and locker rooms, and fitness instructors are available. The luxurious spa facilities with private treatment rooms take guests to another dimension in relaxation and beauty.

- Size: 744 m² / 8,000 sq ft

POOL

Around the pool and whirlpool, exquisite trompe l’oeil murals surround you with the gardens of Versailles. The pool is located in the unique Four Seasons spa and health club. The pool offers guests a relaxing swim or energetic aquatic exercise.

INCENTIVE ACTIVITIES

Sample itinerary

Four Seasons is pleased to help customise itineraries for your group or party to the magical City of Light, where two thousand years of history, art and architecture are on display year-round. The following is a sample group itinerary. We invite you to discuss your needs with us.

Day 1	<p>Arrival at Hotel</p> <p>During transfer, guests receive an orientation to popular Parisian attractions, including the Champs Elysées, Opéra district, Musée du Louvre, Quai d'Orsay, Eiffel Tower and the riverbanks.</p> <p>Evening</p> <p>Bienvenue à Paris &#8211 A welcome dinner reception is prepared at the Hotel.</p>
Day 2	<p>Day</p> <p>Tour Paris' famous sights:</p> <ul style="list-style-type: none">• Visit the Musée du Louvre.• Lunch at Le Procope. Opened in 1686, the landmark café was frequented by historical literary and political figures.• Watch a fashion show at a haute-couture house. <p>Evening</p> <p>Dine at the Eiffel Tower's Altitude 95 restaurant.</p>
Day 3	<p>Day</p> <p>Tour Paris' famous sights:</p> <ul style="list-style-type: none">• Visit Versailles and the King's private apartment.• Travel by horse-drawn carriage to La Petite Venise restaurant for lunch in the park of the chateau. <p>Evening</p> <p>Enjoy a River Seine dinner cruise on board the luxury <i>Yacht de Paris</i>.</p>
Day 4	<p>Day</p> <p>Tour Paris' famous sights:</p> <ul style="list-style-type: none">• Walk from the Senate and Luxemburg Gardens, a former residence of Queen Marie de Medici, to Ile Saint-Louis.• Explore Le Marais, a neighbourhood with some of the oldest architectural treasures in Paris, now a trendy area in the city. <p>Evening</p> <p>Attend gala dinner at a private mansion, <i>Les Vignes de Bagatelle</i>, with 18th-century-style entertainment.</p>
Day 5	<p>Departure</p> <p>Enjoy farewell breakfast in the Hotel before departure.</p>

Rooms	Dimensions		Size		Height		Classroom	Hollow square	U-shape	Theatre	Reception	Banquet rounds	Conference/ boardroom
	(m)	(ft)	(m ²)	(sq ft)	(m)	(ft)							
- Salon Anglais	19.9 x 6.4	65.3 x 21	127	1,367	5.2	17.1	60	48	44	140	120	100	60
- Salon Napoléon	9.9 x 7.4	32.5 x 24.3	73	786	3.4	11.2	40	38	24	60	70	50	24
- Salon Louis XIII	10.6 x 7.4	34.9 x 24.3	78	840	5.6	18.4	45	30	24	60	70	50	24
- Salon Régence	6.1 x 6.1	20 x 20	37	400	3.3	10.8	18	16	15	20	20	16	16
- Salon Elysée	7.7 x 4.6	25.3 x 15.1	35	377	2.7	8.8	12	-	-	20	20	8	12
- Salon Vendôme	24.6 x 18.9	80.9 x 62	465	5,005	4.6	15.1	215	78	60	450	450	350	54
- Foyer Vendôme (Salon Auteuil)	23.8 x 8	78 x 26.3	190	2,045	5.7	18.8	63	40	36	160	200	110	30
- Salon Chantilly	17.3 x 7.4	56.9 x 24.1	131	1,410	2.6	8.6	81	57	42	140	140	100	42