

Quick Reference Guide

Last updated May 3, 2012 | For additional information please contact the hotel directly

Four Seasons Hotel Milan
Via Gesù, 6/8, 20121 Milano, Italy
Tel 39.02.77088 | Fax 39.02.7708.5000

www.fourseasons.com/milan



Via Gesù, 6/8
20121 Milano, Italy
Tel 39.02.77088
Fax 39.02.7708.5000

AIRPORTS

- Linate Airport (LIN): 25 minutes (11 kilometres/6.8 miles)
- Malpensa Airport (MXP): 60 minutes (45 kilometres/28 miles)

TABLE OF CONTENTS

- 2 *Introduction*
- 4 *Destination*
- 10 *Conference Facilities*
- 15 *Guest rooms, Suites and Private Residences*
- 22 *Dining*
- 23 *Recreational Facilities*
- 24 *Incentive Activities*
- 26 *Appendix: Conference Chart*

Immersed in Italy's most fashionable enclave – steps from all the major couture houses – Four Seasons presents a 15th-century convent, reborn to provide luxe style and custom-tailored care. Fresh and inspiring, the setting brings effortless glamour to every occasion.



Just a heartbeat from Via Montenapoleone and the best of Milan, Four Seasons offers the intimacy of a private palazzo. Set within an exquisitely restored 15th-century convent, the Hotel retains many of the original Italian Renaissance details, including frescoes, columns, vaulted ceilings and an oval spiral staircase. The centrepiece is a cloistered courtyard, completely hidden from the street.

With 21st-century comfort and convenience, the Hotel offers a collection of 118 spacious guest rooms, including 51 suites – no two alike. Two superb restaurants and an expansive lobby lounge are complemented by gracious event venues for 12 to 300 guests. Relaxation awaits in the fitness centre and with pampering private spa treatments. Four Seasons service and surroundings ensure the premier experience of Milan.

TRANSPORTATION

Milan is easily accessible by air from virtually anywhere in the world. All primary carriers fly into Malpensa Airport, opened in 1998, with direct connections from the most

important cities in North and South America, Asia and Europe. From the few cities outside Europe that do not have a direct connection to Milan, guests can fly into London, Frankfurt or Paris and take a connecting flight into Milan's second airport, Linate.

Four Seasons Hotel Milan is located in downtown Milan in the historic part of the city. The Hotel is situated on a one-way narrow street, from which large motor coaches are restricted.

WEATHER CHART

Month	°C		°F	
	Highs/Lows	Highs/Lows	Highs/Lows	Highs/Lows
January	5	/ -1	41	/ 30
February	8	/ 0	46	/ 32
March	13	/ 3	55	/ 37
April	18	/ 7	64	/ 45
May	22	/ 11	72	/ 52
June	26	/ 15	79	/ 59
July	29	/ 17	84	/ 63
August	28	/ 17	82	/ 63
September	24	/ 14	75	/ 57
October	18	/ 8	64	/ 46
November	10	/ 4	50	/ 39
December	5	/ 0	41	/ 32

DESTINATION

Known as the Italian capital of commerce and fashion, Milan offers a vibrant and confident personality that brings together historic masterworks and the latest design trends. Conveniently positioned for travellers, Milan is 250 kilometres (155 miles) north of Florence and 250 kilometres (155 miles) west of Venice. It's a 45-minute drive to the Northern Lakes, including Lake Como, and only two hours from the Italian Riviera and the famous ski resorts of the Alps. The city lies in the middle of the Lombardy plain and is bordered by the Po, the Ticino and the Adda rivers.

Four Seasons Hotel Milano is located in the city's famed Quadrilatero della Moda – an area offering some of the world's finest designer shopping. The Hotel is set on Via Gesù – a quiet narrow lane lined with stately historic buildings – between Via della Spiga and Via Montenapoleone, considered Milan's two best shopping streets. Close to the business district, the Hotel is also just steps from such historic landmarks as La Scala opera house, Il Duomo cathedral and the Santa Maria delle Grazie church, home to Da Vinci's masterpiece *The Last Supper*.

WEATHER

Milan's climate is mild in spring and autumn. Its summers are dry and warm, with bright sunny days. In winter, some rainy days are not unusual, but the temperature is never too severe.

LOCAL ATTRACTIONS AND ACTIVITIES

Four Seasons provides a unique vantage point from which to explore the sights, sounds and experiences of this region. The highlights of local attractions below help simplify planning. Please let us know how else we can assist you.

Within a 5-minute walk of the Hotel

Padiglione d'Arte Contemporanea:

- Museum of contemporary art.

Museo Poldi Pezzoli:

- Gian Giacomo Poldi Pezzoli opened his private collection to the public in 1881. This interesting collection includes paintings dating from the 14th century, as well as fine artisan displays of gold work, enamel work, Murano glass, ceramics, furnishings, textiles, lace, tapestries, clocks, arms and armour. A red velvet altar cover is just one example of the high quality materials and workmanship of the textiles used for church decorations and clothes of the noble classes during the Renaissance.

Museo Bagatti Valsecchi:

- At the end of the 19th century, two rich barons and lawyers, Fausto and Giuseppe Bagatti Valsecchi, sons of a sketcher and miniaturist, decided to turn their home into a neo-Mannerist-style "palace." They succeeded brilliantly in recreating the style of an authentic 16th-century palazzo. In the museum, authentic works (collected throughout Lombardy and elsewhere) are mixed with ornaments and decorations that are simply reproductions of the original. The Bagatti Valsecchi home is a fascinating document of Milanese 19th-century artistic taste, as well as of 16th-century Lombard art. Across the street from the Hotel.

Christian Stein:

- Features an exhibition of modern masters.

Within a 10-minute walk of the Hotel

Teatro alla Scala:

- The most famous opera house in the world, La Scala was built by Giuseppe Piermarini between 1776 and 1778. The opera house stands upon the ruins of the old church of Santa Maria della Scala, its namesake. Set in Piazza alla Scala and circled by greenery, La Scala's neoclassical architecture is complemented by a monument to Leonardo da Vinci. The restored La Scala theatre re-opened in December 2004 following a four-year renovation that returned it to Piermarini's original building.

Pinacoteca Di Brera:

- An important state-funded museum in Milan. The impressive baroque Brera Palace, once a Jesuit college, now houses the Academy of Fine Arts, the Picture Gallery, the Brera Library and the Astronomical Observatory, not to mention the Botanical Gardens. The gallery occupies 38 showrooms with more than 560 pictures, mostly from the Venetian school of the 15th to the 17th centuries. There are works by Mantegna, Piero della Francesca, Bellini (Pietà), Raffaello and Caravaggio.

Museo Teatrale alla Scala:

- Inaugurated in 1913, this museum is a very crowded place, with lots of objects packed into just a few rooms. It is a genuine place of worship for opera lovers; in addition to busts and portraits of Italian and foreign musicians and singers from the 19th century to the present day, it features masks, costumes, scores, autographed letters and drawings of stage sets. Giuseppe Verdi is, of course, the museum's strong point. The museum originated from private collections and remains a private institution. Its material is often exhibited in foreign countries, and it also organises a series of temporary exhibitions. The Museo Teatrale is of particular interest to scholars of the history of opera and entertainment. The library of the museum is endowed with more than 45,000 volumes collected by playwright and theatre critic Renato Simoni. A collection of antique musical instruments belonging to the Museo Teatrale and housed in the Palazzo dei Giureconsulti can also be visited with the same ticket.

Galleria Milano:

- Rotating exhibitions of modern and contemporary painters.

Duomo:

- Known as the heart of Milan, this magnificent gothic building is the only one of its kind in Italy. The vast dimensions of the building are superseded only by those of St. Peter's Cathedral in Rome. Work on the Duomo began in 1386 and continued for about 300 years. It has a double-aisled nave and 52 columns which are 48 metres (157 feet) high.

Palazzo Reale:

- Located to the south of the Duomo, this 13th-century town hall and royal palace was rebuilt in 1772–78 and altered again in the 19th century. It now belongs to the municipality. The Palazzo Reale also houses the Duomo Museum, featuring works of art and sculptures that are part of the Duomo itself. In the courtyard of the Palazzo

Reale is the Civic Museo di Arte Contemporanea. Opened in 1984 but still under construction, it houses important works by Boccioni, Balla and Severini.

Galleria Vittorio Emanuele II:

- This 19th-century mall, filled with a number of prestigious cafés, stores and restaurants, was designed by Giuseppe Mengoni in 1865. The Galleria connects the Duomo with the famous opera house La Scala. It is a magnificent structure, with high ceilings and a beautiful marbled walkway.

Via Brera:

- Via Brera, in the older part of the city, has become an area bustling with activity. The Pinacoteca di Brera is located in this prestigious district, as well as numerous bars and restaurants. The district stretches as far north as the famous Disco Hollywood on Corso Como. A stroll down Via Porta Vetro, through Via Mercato and Corso Garibaldi, is a good way to become familiar with some of the small, quaint shops of Milan. Take a walk down Via Fiori Chiari and Piazza Carmine to get to know the "real" Milan.

Within a 20-minute walk of the Hotel

Castello Sforzesco:

- This castle, built in 1368 by Galeazzo Visconti II, was one of the most opulent courts in Italy. Restored in the 19th century by Luca Beltrami, it features imposing square brick strongholds with corner keeps and is surrounded by a moat. Inside are two permanent collections of Egyptian and prehistoric artefacts. Another surprise find for many visitors is Michelangelo's last piece of work, an extraordinary sculpture of Pietà Rondanini, in the civic gallery of the castle. The castle and surrounding park are a must-see for any visitor to Milan.

Piccolo Teatro:

- One of the most modern theatres in Milan, founded in 1947 as Milan's first folk theatre. Piccolo Teatro gained European acclaim under the brilliant director/actor Giorgio Strehler. Some of the best known and loved performances at the Piccolo include the plays of Brecht, as well as Strehler in his amazing interpretation of Faust.

Within a 10-minute drive of the Hotel

Auditorium Di Milano:

- Home to the famous Orchestra Milenese Giuseppe Verdi, as well as other important classical music events.

Fondazione Mazzotta:

- The Fondazione Mazzotta belongs to the Mazzotta family and is known for its unique exhibitions of the most avant-garde artists of their time, as well as objects from Antonio Mazzotta's vast private collection. There are exhibitions dedicated to the most important themes of this century and a multimedia system for information on the exhibits.

Gio' Marconi:

- This gallery exhibits contemporary photography and other works.

Within a 15-minute drive of the Hotel

Santa Maria delle Grazie church (The Last Supper):

- Originally constructed in austere Gothic style in 1490, the church and its adjoining convent are now a symbol of the glory of Renaissance Milan. In his quest to turn Milan into a beautiful rival of Florence, Ludovico il Moro directed the architect Bramante (Donato di Pascuccio) to reconstruct the apse and lantern of his favourite church, St. Mary of Grace. Leonardo da Vinci was commissioned to paint the frescos, the most famous of which – the Cenacolo or Last Supper – graces the far wall of the adjacent Dominican dining hall. Advance reservations required.

San Lorenzo:

- The basilica of San Lorenzo dates from the end of the 4th century, when it was constructed near the city's Roman Circus and Amphitheatre. It has since undergone various modifications, but the Early Christian chapels and the late-16th-century columns are almost intact. The basilica is flanked by a large park.

Within a 20-minute drive of the Hotel

San Siro Stadium:

- This soccer stadium is the home of Inter FC and Milan AC. Ask the Concierge for a calendar of activities.

Navigli District:

- On the outskirts of the city, the picturesque Navigli district is located on two canals. The area has an interesting and dynamic social mixture, with both traditional dwellings and newly renovated penthouses. It is well known for its pubs, restaurants and music clubs.

Fiera di Milano Rho:

- This trade fair has been active since 1920. It hosts 80 exhibitions each year, with 31,000 exhibitors and 2.5 million visitors. Three new buildings were recently completed, making the Fiera di Milano one of the most modern complexes in the world. There are 15,000 parking spaces, as well as parabolic hook-ups, restaurants, bars and currency exchange counters.

Within a 30-minute drive of the Hotel

Filaforum:

- This basketball and volleyball arena is also a venue for international tennis tournaments and is the biggest concert venue in Milan.

Abbazia di Chiaravalle:

- The abbey was founded in 1135 by San Bernardo, a Cistercian abbot from Clavaux. Its French-Gothic style also has some elements of Lombard architecture. The majestic building is noted for its Gothic cloister, refectory, chapter house and spectacular tower. Guided tours can be arranged through the Tourist Office or the Concierge.

Within a 45-minute drive of the Hotel

Autodromo Nazionale Monza:

- Monza, approximately 15 kilometres (9 mi.) north-east of Milan, is a city and commune on the river of Lambro, a tributary of the Po, in the Lombardy region of Italy. It is best known for its Grand Prix motor racing circuit, the Autodromo Nazionale Monza. Other events and activities include car and motorcycle rallies, competitions for people with disabilities, slaloms, safe-driving schools and tests by the Traffic Control Authority and the Milan Technical University.

The autodrome is also an important centre for leisure and non-motorized sports, including the annual non-competitive “Formula One” foot race; a multi-sport festival, featuring a wide variety of sports; model-car races; cycling races; automobile auctions; and a big show of new car models, called Motormonza, with the opportunity to test the cars on the track.

When the track is not being used for practice or racing, people can drive it in their own cars or motorcycles, or can cover a couple of laps by bicycle, on foot, on in-line skates or on roller skis. The Olympic-sized swimming pool and the campground are also popular attractions.

Parco di Monza:

- Parco di Monza, an extension of the gardens of the Villa Reale di Monza, is a large walled park that covers an area of 688 acres. The largest park in Europe, it's more than three times the size of Central Park in New York, and is considered larger than Richmond Park in London and Phoenix Park in Dublin combined.

Within a 1-hour drive of the Hotel

Como:

- Situated north of Milan on the southwest shore of Lake Como, the town of Como still preserves its Roman street plan. In the heart of the town is the 14th-century cathedral Santa Maria Maggiore. Built entirely of marble, it is a mixture of Renaissance and Gothic architecture. Piazza Cavour, on the lake front, has many cafés and hotels. Visitors can tour the lake on a boat or hydrofoil. The quaint town of Bellagio is just a short ride from Como, and the lakeside village of Cernobbio also merits a visit for lunch or a walk in the park.

Certosa di Pavia:

- Construction on this magnificent building began in 1488, based on designs by Christoforo Rocchi and Giovanni Antonio Amadeo (later modified by Bramante and Leonardo da Vinci). The immense cupola was added in 1884–85 and the facade was completed in 1933. The rest of the exterior remains unfinished. This historic site is a pleasant stop along the way to the Ligurian sea and Portofino.

Bergamo:

- The beautiful city of Bergamo is divided into two very different sections. Bergamo Bassa, the lower city, was laid out in the first decades of the 20th century. The wide vias and pleasant squares give the town a feeling of spaciousness. Here, in the heart of the city, are the monumental Piazza Matteotti and its gardens, Piazza Vittorio Veneto, Torre dei Caduti and the arcades. The train station, most of the hotels and the

principal shops are also located in Bergamo Bassa. Bergamo Alta is the antique, walled area of the city, dating from the 12th century. Its narrow streets feature attractive shops, as well as various important and interesting historical sites. Visit Piazza Vecchia, with its lovely fountain, or the small Piazza del Duomo. Other points of interest are the romanesque church Santa Maria Maggiore (built by Fredo in 1137) and Via Porta Dipinta. Located 52 kilometres (32 miles) northeast of Milan, on autostrada A4.

Vigevano:

- Vigevano, the birthplace of Ludovico il Moro, is an industrial town that is an important centre in the shoe industry. The town is home to many historic sites, including the Castle Sforzesca.

Crema and Lodi:

- The towns of Crema and Lodi are located on fertile plains near the confluence of the Po and Adda Rivers. Originally of Gallic origin, Crema became a Roman colony in 218 BC. After the fall of the Empire, it was subject to barbarian invasions before becoming a free municipality in the 11th century. A number of monuments in Crema and nearby Lodi make this an interesting outing.

CONFERENCE FACILITIES OVERVIEW

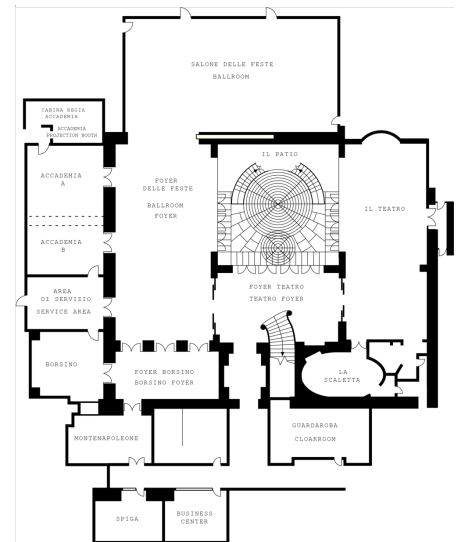
Total Space	604 m ² 6,500 sq.ft.
Largest Ballroom	215 m ² 2,314 sq.ft.
Meet and Feed (max. capacity)	250
Breakouts	7
Banquet (max. capacity)	300
Outdoor Banquet (max. capacity)	-
Private Dining (max. capacity)	14

CONFERENCE FACILITIES

Four Seasons offers 604 square metres (6,500 square feet) of versatile meeting and function space, hosting 12 to 300 guests. Conveniently grouped on the lower level, the function facilities are set around a handsome sunken courtyard, creating an attractive view while providing natural light.

The elegant Ballroom hosts 170 for dinner – or 300 when combined with the Ballroom Foyer. Five other function rooms, including two formal boardrooms, suit parties of 12 to 70. These flexible spaces adapt easily to unique concepts, while state-of-the-art technology enables the most creative presentations. Expert event planning staff are celebrated for distinctive menus, decor and entertainment, with an emphasis on originality, quality and unparalleled service.

Lower lobby level



TECHNICAL ASSISTANCE

Four Seasons Hotel Milano is equipped with the latest audiovisual equipment:

- Overhead and slide projection equipment
- Multi-image systems
- Video monitors and projectors
- Wired or wireless Internet access

MUSIC AND ENTERTAINMENT

Our Catering Manager will be happy to assist in coordinating any type of music or entertainment for your meeting.

RECEIVING AND MAINTENANCE

All packages should be sent to the attention of the event's name and the Hotel's Catering Manager. Keep in mind that limited space is available for storage of large items, and please time shipping to the date of your arrival. Shipping of post-conference materials may be coordinated through the Hotel's Concierge or Catering Manager. The Engineering Department is available for general assistance with lighting, room temperature control and minor repairs.

DESTINATION MANAGEMENT

Please contact the Hotel's Sales and Marketing Office.

BUSINESS SERVICES

Around the clock, Four Seasons can assist you with business, entertainment or travel arrangements through the Business Center and resourceful, multilingual Concierge.

- 24-hour business services
- Airline reservation service
- Audiovisual equipment
- Cellular telephones
- Computers
- Express check-in/check-out
- Japanese translation and interpretation service
- Secretarial service
- Translation and interpretation service
- Wireless Internet access

SPOUSE PROGRAMMES

Spouse programmes offered by Four Seasons Hotel Milano include guided shopping tours, afternoon teas with classical music, walking tours to the historical monuments and private museums, chef programmes on Mediterranean cuisine and sight-seeing excursions to Lake Como or to the towns of Parma and Bergamo.

CHILDRENS AND FAMILY PROGRAMMES

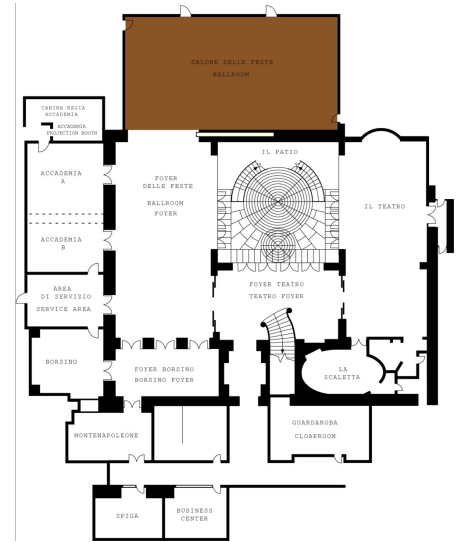
Please contact the Hotel's Catering Manager or Head Concierge for tailor-made proposals.

BALLROOM

Dimensions	21 x 10.2 m 68.9 x 33.5 ft
Size	215 m ² 2,314 sq.ft.
Height	3.6 m 11.8 ft

Capacities

Classroom	100
Hollow square	60
U Shape	50
Theatre	220
Reception	200
Banquet Rounds	160/120

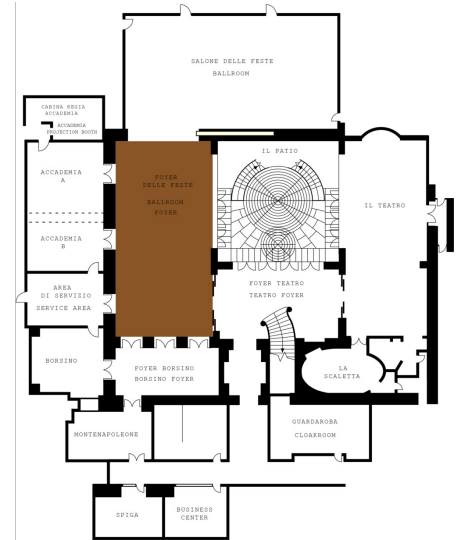


BALLROOM FOYER

Dimensions	8.5 x 18.8 m 27.9 x 61.7 ft
Size	159.8 m ² 1,720 sq.ft.
Height	3.6 m 11.8 ft

Capacities

Reception	180
Banquet Rounds	130/90

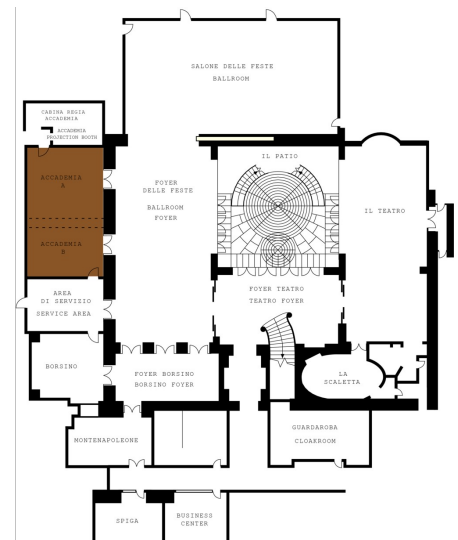


ACCADEMIA ROOM

Dimensions	6.2 x 12.4 m 20.3 x 40.5 ft
Size	76.6 m ² 824 sq.ft.
Height	2.7 m 8.8 ft

Capacities

Classroom	40
Hollow square	30
U Shape	26
Theatre	60
Reception	70
Banquet Rounds	60/30

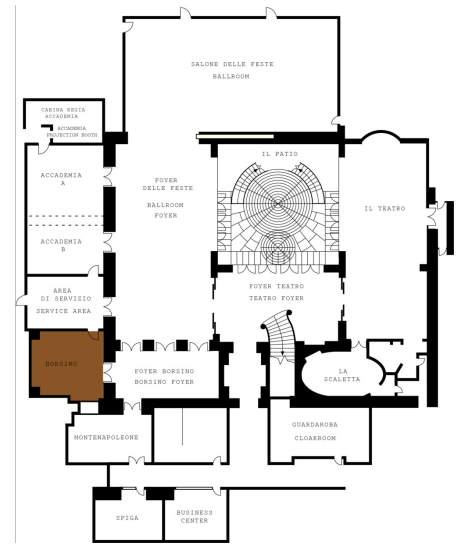


BORSINO ROOM

Dimensions	6.5 x 6.3 m 21.3 x 20.6 ft
Size	40.7 m ² 438 sq.ft.
Height	2.7 m 8.8 ft

Capacities

Classroom	24
Hollow square	20
U Shape	16
Theatre	30
Banquet Rounds	24
Boardroom	20

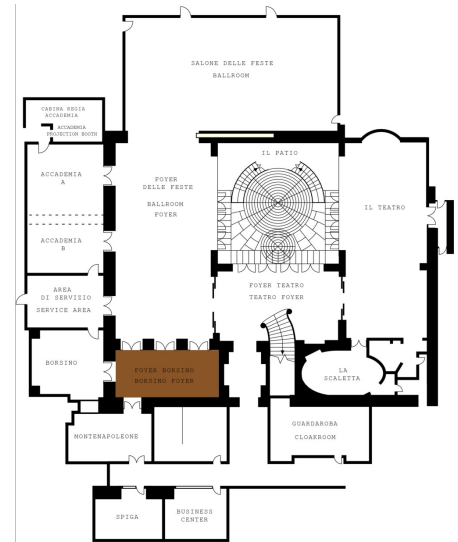


BORSINO FOYER

Dimensions	9.4 x 4 m 30.8 x 13.1 ft
Size	37.6 m ² 405 sq.ft.
Height	3 m 9.8 ft

Capacities

Reception	25
Banquet Rounds	30
Boardroom	20

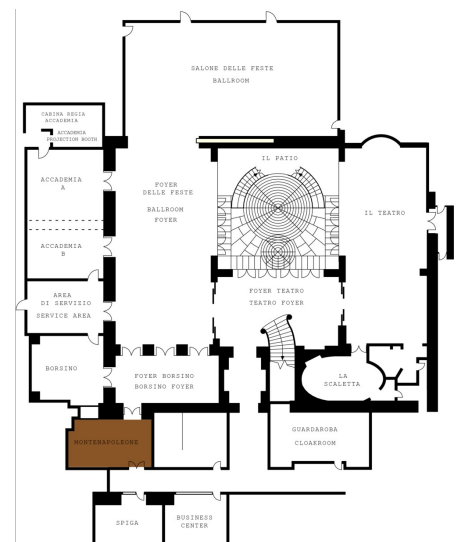


MONTENAPOLEONE BOARDROOM

Dimensions	4.4 x 7 m 14.4 x 23 ft
Size	30.8 m ² 332 sq.ft.
Height	2.7 m 8.8 ft

Capacities

Classroom	16
U Shape	16
Boardroom	18

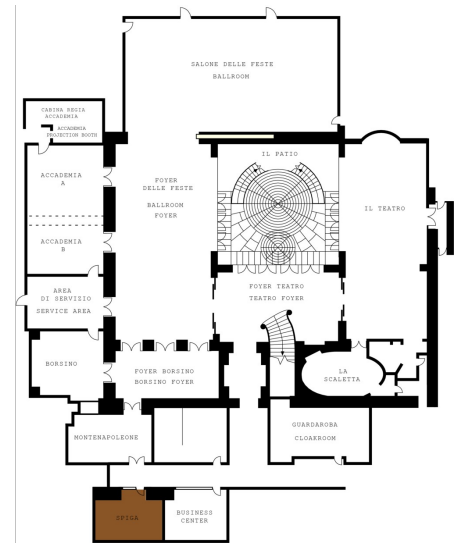


SPIGA BOARDROOM

Dimensions	3.5 x 6 m
	11.5 x 19.7 ft
Size	21 m ²
	226 sq.ft.
Height	2.7 m
	8.8 ft

Capacities

Banquet Rounds	12
Boardroom	12



GUEST ROOMS, SUITES AND PRIVATE RESIDENCES OVERVIEW

Offering exceptional quiet within this busy neighbourhood, guest accommodations at Four Seasons Hotel Milano face tranquil inner courtyards or the peaceful Via Gesù. The Hotel includes 118 guest rooms, including 51 suites – every one unique.

Interiors blend the 15th-century convent's original architectural details – frescoes, columns and vaulted ceilings – with a sense of contemporary chic. Each room is a unique reflection of Italian design, with Fortuny fabrics, Frette linens, custom-loomed carpets and custom-designed sycamore burl and pear cabinetry. Technology ranges from high-speed wired and wireless Internet access to flat-screen televisions and DVD players. Opulent marble bathrooms include a lavish vanity, deep European soaking tub, bidet, walk-in shower, heated marble floors, towel rack and steam-resistant mirrors.

Room Category	#	Beds	Size (m ²)	View (sq ft)
- Four Seasons Executive Suite	13	1 King	70 – 84	755 – 910 Main courtyard, smaller courtyards or Via Gesù
- Four Seasons Junior Suite	26	1 King or 2 euro-single	56 – 66	602 – 710 Main courtyard, smaller courtyards or Via Gesù
- Premium Room	35	1 King or 2 euro-single	45-58	485-625 Main courtyard, smaller courtyards or Via Gesù
- Deluxe Room	10	1 queen	40-45	430-485 Main courtyard or private garden
- Superior Room	22	1 queen	35-44	380-475 Via Gesù
- Royal Suite	1	1 King . 2 2 King . 3 3 King .	150-280	1,614-3,000 Central Milan and the Duomo
- Visconti Suite	1	1 King . 2 2 King .	195-245	2,098-2,650 Main and inner courtyards
- Designer Suite	1	1 King , plus a Murphy in the living area	109	1,173 Main courtyard
- Renaissance Suite	1	1 King	108	1,162 Main courtyard
- Fashion Suite	1	1 King	81	872 Inner courtyard or terrace
- Cloister Suite	7	1 King	81-105	872-1,130 Private gardens or courtyards

Guest Room Overview

Four Seasons guest rooms offer remarkable variety and versatility – with no two exactly alike. Superior Rooms offer a picturesque view of Via Gesù. One-of-a-kind Deluxe Rooms are unusually spacious and overlook one of the Hotel's quiet courtyards or Via Gesù.

Each Four Seasons Junior Suite is designed around the original 15th-century architecture. Each of these high-ceilinged suites features an open-space living and bedroom area, and some feature step-out balconies. Four Seasons Executive Suites are particularly spacious, with separate sleeping and living quarters and, in some cases, a guest powder room. All overlook the quiet courtyard or Via Gesù.

Suites Overview

Offering distinctive spaces for work, leisure or entertaining, each Four Seasons suite is uniquely furnished and differs in size, floor plan and design. Many feature ornate vaulted ceilings and restored fresco fragments and mouldings. Set around the cloistered courtyard, the ground-floor Cloister Suites offer a tri-level, open-plan layout featuring a central living and dining area with the bedroom a few steps above and the bathroom a few steps below. Large French windows present views of lush private gardens or charming courtyards. Each Cloister Suite has a stylish and comfortably furnished sitting area with a large wooden desk, as well as a king bedroom.

Imparting the air of a cosy city apartment, the designer-furnished Fashion Suite is an intimate arrangement of bedroom, work area and living room, opening through large French doors onto a private terrace. The Renaissance Suite is a bright, predominantly white studio-style space with a 17th-century stuccoed ceiling and three large windows overlooking the main courtyard. Capturing the spirit of Italy's renowned Brioni fashion house, the Designer Suite is arranged as a loft-style one-bedroom apartment with step-out balconies above the courtyard.

The magnificent Visconti Suite features a living room with vaulted wooden ceilings and a marble fireplace. The elegant dining room has an adjacent kitchen, and the lavish bathroom includes a whirlpool. Occupying the entire fifth floor, the Royal Suite offers private access and a rooftop terrace. With one to three bedrooms, the suite includes a grand living room, a reading room with fireplace and a dining area served from a fully equipped kitchenette.

FOUR SEASONS EXECUTIVE SUITE

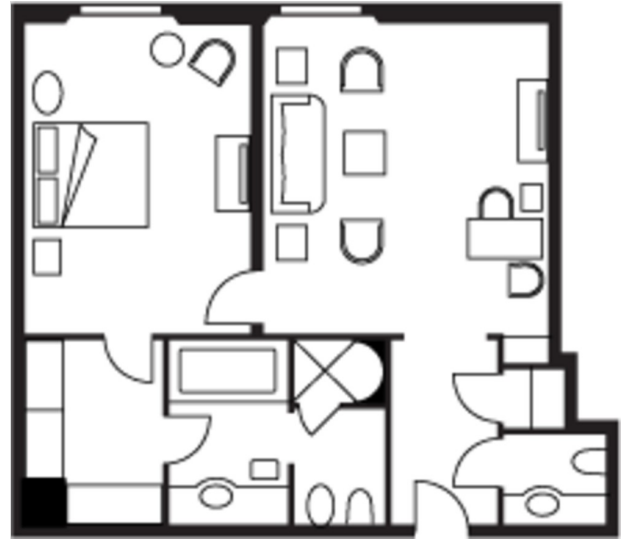
Number 13
Beds King bed
Size 70 – 84 m²
755 – 910 sq ft

Location

Corners of the Hotel

View

Main courtyard, smaller courtyards or
Via Gesù



FOUR SEASONS JUNIOR SUITE

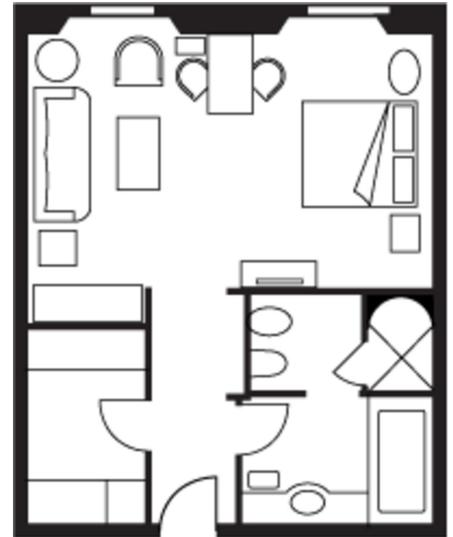
Number 26
Beds King or two euro-single
beds
Size 56 – 66 m²
602 – 710 sq ft

Location

Ground, 1st, 2nd and 3rd floors

View

Main courtyard, smaller courtyards or
Via Gesù



DELUXE ROOM

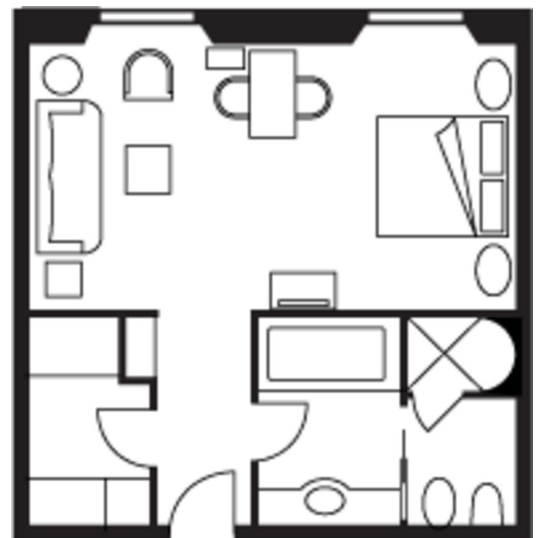
Number 10
Beds One queen bed
Size 40-45 m²
430-485 sq ft

Location

Throughout the Hotel

View

Main courtyard or private garden



SUPERIOR ROOM

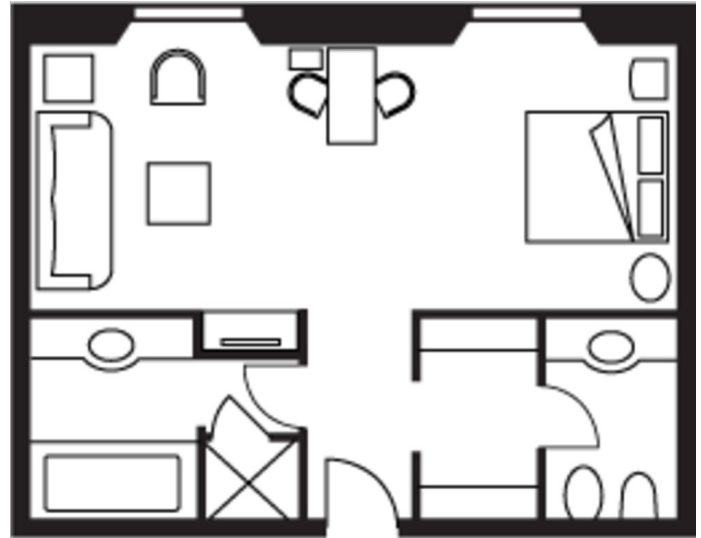
Number 22
Beds One queen bed
Size 35-44 m²
380-475 sq ft

Location

Ground, 1st and 2nd floors

View

Via Gesù



ROYAL SUITE

Number 1
Beds One Bedroom: King bed.
Two Bedroom: Two king
beds. Three Bedroom:
Three king beds.
Size 150-280 m²
1,614- 3,000 sq ft

Location

5th floor

View

Central Milan and the Duomo



VISCONTI SUITE

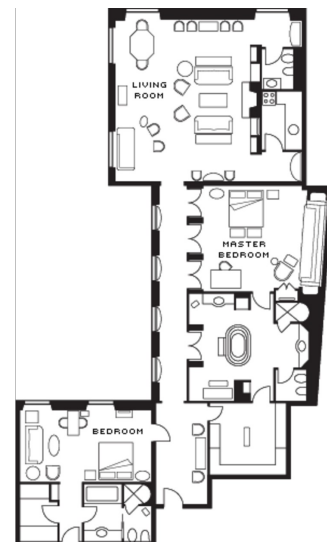
Number 1
Beds One bedroom: King bed.
Two bedroom: Two king
beds.
Size 195-245 m²
2,098- 2,650 sq ft

Location

3rd floor

View

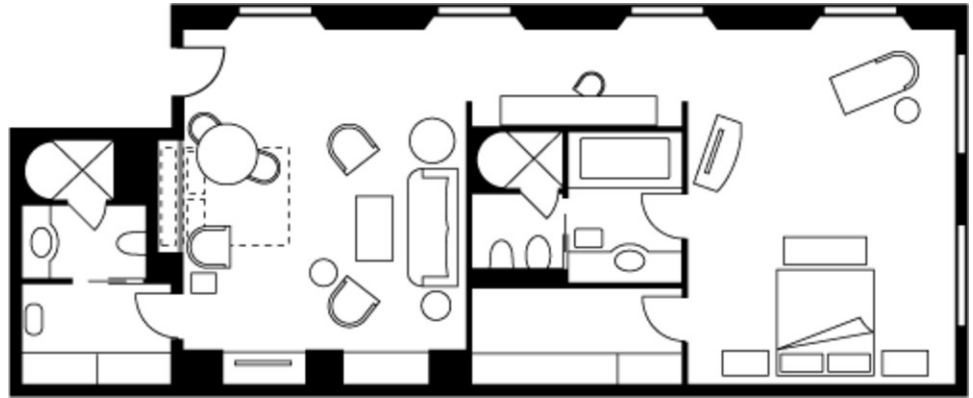
Main and inner courtyards



DESIGNER SUITE

Number 1
Beds One king bed, plus a
Murphy bed in the living
area
Size 109 m²
1,173 sq ft

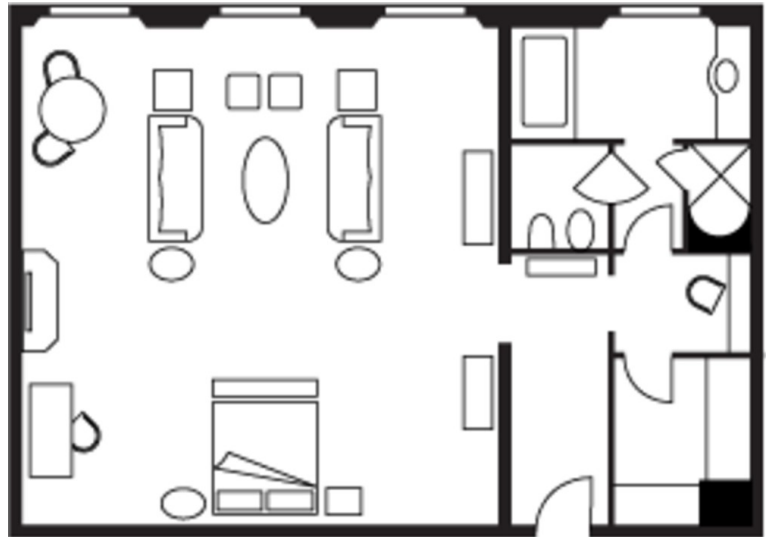
Location
Third floor
View
Main courtyard



RENAISSANCE SUITE

Number 1
Beds King bed
Size 108 m²
1,162 sq ft

Location
1st floor
View
Main courtyard



FASHION SUITE

Number 1
Beds King bed
Size 81 m²
872 sq ft

Location
Fourth floor in the casa di ringhiera-
style wing
View
Inner courtyard or terrace



CLOISTER SUITE

Number 7
Beds King bed
Size 81-105 m²
872-1,130 sq ft

Location

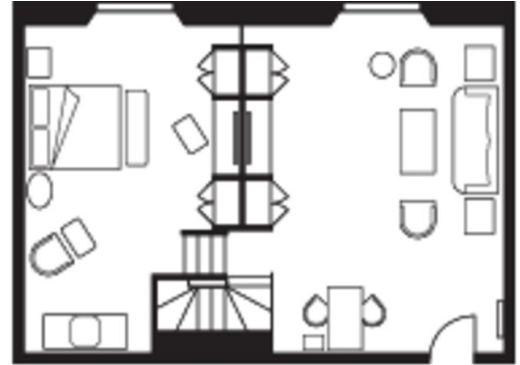
Ground floor

View

Private gardens or courtyards



UPPER LEVEL



AMENITIES

- All news cable network
- CD player
- Clock radio
- Complimentary newspaper with breakfast
- Down pillows
- DVD player
- Fax machine on request
- Hair dryer
- Hypo-allergenic pillows on request
- In-room safe
- Multi-line telephone(s) with voicemail
- Refrigerated private bar
- Thick terry bathrobes
- Twice-daily housekeeping service
- Wired or wireless Internet access

GUEST SERVICES

- 24-hour In-Room Dining
- 24-hour laundry/dry-cleaning/pressing
- 24-hour multilingual Concierge
- Complimentary overnight shoeshine
- Limousine service
- Non-smoking rooms
- One-hour pressing
- Private dining room
- Restaurants
- Lounge
- Services and amenities for younger guests
- Umbrellas
- Valet parking
- Express check-in/check-out

VIP GIFTS AND WELCOME AMENITY

Special arrangements can be made for clients to purchase welcome amenities for their VIP guests.

DINING HOURS OF OPERATION

Il Teatro

Dinner

Monday to Saturday 7:30 pm - 11:00 pm

Brunch

Sunday 11:45 am - 3:00 pm

La Veranda

Breakfast 7:00 am - 11:30 am

Lunch and dinner 11:30 am - 11:00 pm

Children's and teen's menu 7:00 am - 11:00 pm

Afternoon tea 4:00 pm - 6:30 pm

Il Foyer

Light menu

Every day 8:30 am - 1:00 am

After theatre menu

Monday - Saturday 11:00 pm - midnight

In-Room Dining

Breakfast 6:00 am - 11:30 am

Lunch and dinner 11:30 am - 11:00 pm

Children's and teen's menu 11:30 am - 11:00 pm

DINING

Two outstanding restaurants and a glamorous see-and-be-seen lounge attract chic locals and savvy international travellers alike.

RESTAURANTS

Il Teatro

Il Teatro serves up dynamic menus that highlight the freshest local ingredients, as well as a gourmet menu that changes daily. The restaurant offers a sophisticated dining experience overlooking the inner Il Patio garden.

La Veranda

Fashionable locals gather at La Veranda for innovative Mediterranean and local cuisine with an accent on seasonal, fresh ingredients created by celebrity Executive Chef Sergio Mei and his brigade of 28 white hats. Vegetarians will enjoy the strictly vegetarian menu.

- Indoor seating: 68

LOUNGES

Il Foyer

Il Foyer is the Hotel's relaxed and elegant lounge, offering light hors d'oeuvres, snacks, desserts and cocktails. Located next to the Camino room in the main lobby, where the convent's church stood over 500 years ago, Il Foyer's walls are adorned with a collection of sketches that Filippo Peroni made for Teatro alla Scala. In the winter, a glowing fire creates a warm and welcoming atmosphere. Piano entertainment Monday to Saturday from 7:30 pm to 11:30 pm.

RECREATION FACILITIES

Flexible for the busy schedules of visitors to Milan, Four Seasons offers extended fitness facility hours and private in-room spa services – ideal for those who wish to stay in and relax with a massage after a full day of meetings. Additional options for recreation include three nearby golf courses.

SPA SERVICES

Pamper yourself with an invigorating or relaxing treatment in the privacy of your guest room or suite. The Hotel offers several types of massages, as well as manicure and pedicure treatments. Skin care and specific body therapies can be arranged at the nearby GF Ferré Spa.

FITNESS FACILITIES

Located on the ground level, the Fitness Center is open daily. As the centre is not equipped with changing rooms, lockers and showers, we recommend that guests arrive appropriately dressed.

- Size: 61 m² / 656 sq ft

GOLF

Le Robinie Golf Club

Midway between Milano, Varese and Lake Maggiore, Le Robinie is one of Italy's newest and most prestigious courses. The creative layout of the bunkers and greens was designed by Jack Nicklaus. This is a very open and forthright course, whose back tees add challenge for experienced players.

Golf Club Milano

Close to Milano in the Park of Monza on the site of the former hunting lodge, Golf Club Milano is one of Italy's most prestigious golf clubs. The annual encounter with members of the Royal and Ancient at St. Andrews exemplifies its active golfing tradition. It boasts a luxurious clubhouse and a course well-suited to all standards of play.

Golf Club Villa d'Este

This club has been one of the gems of Italian golf courses since 1926. Golf Club Villa d'Este is located close to Lake Como, where small harbours give way to villas surrounded by exotic gardens. Although Villa d'Este is a hilly property set amidst pine, chestnut and birch trees, it is also an easily walkable course. A superb clubhouse adds the final touch to this tranquil and elegant site.

INCENTIVE ACTIVITIES

Sample itinerary

We are pleased to help customise an itinerary for your group or party, to make each day a unique experience reflecting the historical and modern day significance of Milan. Following is a sample group itinerary. You are invited to discuss your needs with us.

Day 1 Arrival at Hotel
Upon arrival at the Hotel, enjoy a welcome breakfast and orientation to the Hotel and surroundings.

- Lunch in a private room.
- Tour the city's historical sites, such as the Duomo and the Galleria Vittorio Emmanuele.
- Taste coffee at the popular COVA Caffé.

Evening

Dine in one of the many trendy restaurants in the city centre or at a traditional *trattoria* in the Navigli (canal) area.

Day 2 Day

- Shop in the boutiques of the *Quadrilatero della moda*, Milan's fashion district.
- Visit Lake Como – cruise on the lake and tour a silk factory nearby.

Evening

- Dine in one of Lake Como's many restaurants.
 - Attend an opera at the famous La Scala.
-

Day 3 Day

- Shop at Serravalle, an outlet centre featuring Italian and international fashion brands, or attend a fashion workshop.
- Visit Santa Maria Della Grazie Church and view Leonardo da Vinci's *Last Supper*.

Evening

- Visit the old town of Bergamo, with its enchanting churches, palaces, squares and breathtaking views of the Lombard plains.
 - Dine in Bergamo Alta.
 - Experience wine tasting in the Franciacorta region.
 - In the summer, attend an opera at the old Roman amphitheatre in Verona.
-

Day 4 Day

- Visit Sforzesco Castle, home of Sforza, a Milanese noble family. Built in 1450, the castle is also home to Michelangelo's *La Pietà Rondanini* and an exclusive collection of Italian art.
- Attend a cooking class with Chef Sergio Mei.
- Visit one of the many gourmet wine and food stores located near the Hotel.

Evening

Visit a wine estate in the Lombard region; enjoy wine tastings, followed by dinner in one of many private *palazzos*.

Day 5

Day

- Play a game of golf.
- Visit Certosa di Pavia, a former abbey.
- Tour Lake Garda.
- Visit Milan's famous museums.

Evening

- Attend a gala reception and dinner at the Hotel or at nearby Museo Bagatti Valsecchi, with live entertainment.
 - Attend a football match at San Siro stadium.
-

www.fourseasons.com/milan

Rooms	Dimensions		Size		Height		Classroom	Hollow square	U-shape	Theatre	Reception	Banquet rounds	Conference/boardroom
	(m)	(ft)	(m ²)	(sq ft)	(m)	(ft)							
- Ballroom	21 x 10.2	68.9 x 33.5	215	2,314	3.6	11.8	100	60	50	220	200	160/120	60
- Ballroom Foyer	8.5 x 18.8	27.9 x 61.7	159.8	1,720	3.6	11.8	-	-	-	-	180	130/90	-
- Accademia Room	6.2 x 12.4	20.3 x 40.5	76.6	824	2.7	8.8	40	30	26	60	70	60/30	32
- Borsino Room	6.5 x 6.3	21.3 x 20.6	40.7	438	2.7	8.8	24	20	16	30	-	24	20
- Borsino Foyer	9.4 x 4	30.8 x 13.1	37.6	405	3	9.8	-	-	-	-	25	30	20
- Montenapoleone Boardroom	4.4 x 7	14.4 x 23	30.8	332	2.7	8.8	16	-	16	-	-	-	18
- Spiga Boardroom	3.5 x 6	11.5 x 19.7	21	226	2.7	8.8	-	-	-	-	-	12	12