



Quick Reference Guide

Last updated May 3, 2012 | For additional information please contact the resort directly

Four Seasons Lana'i at Manele Bay
One Manele Bay Road, P.O. Box 631380, Lana'i City, Hawaii, 96763, U.S.A.
Tel 1.808.565.2000 | Fax 1.808.565.2483 | Res 1.800.321.4666

www.fourseasons.com/manelebay



One Manele Bay Road
P.O. Box 631380
Lana'i City, Hawaii 96763, U.S.A.
Tel 1.808.565.2000
Fax 1.808.565.2483
Res 1.800.321.4666

AIRPORT

- Lana'i City Airport (LNY): 25 minutes (9 miles/ 14.5 kilometres)

TABLE OF CONTENTS

- 2 Introduction
- 4 Destination
- 8 Conference Facilities
- 14 Guest rooms, Suites and Private Residences
- 20 Dining
- 22 Recreational Facilities
- 26 Appendix: Conference Chart
Appendix: Golf Scorecard

Paradise comes to life on a private Hawaiian island. Four Seasons Resort Lana'i at Manele Bay offers ocean-side splendour atop a rugged red lava cliff edging a white-sand beach. Two legendary golf courses are enhanced by open-air spa pampering and dynamic island exploration.



On the island's southern shore, Four Seasons Resort Lana'i at Manele Bay offers dazzling views over the white crescent beach of Hulopo'e Bay and the blue-green waters of its protected marine preserve. The Resort presents a captivating blend of Hawaiian and Asian design, built around intimate courtyards, lush gardens, flowing waterfalls and tranquil pools.

The collection of 236 oversized guest rooms includes 21 suites, each with a private lanai (balcony). Five open-air dining options are complemented by 50,541 square feet (4,695 square metres) of indoor and outdoor function spaces. For tropical relaxation, there's an outdoor pool overlooking the beach and a full-service spa adjoining the state-of-the-art fitness centre. Recreation continues with two legendary golf courses, tennis, deep-sea fishing, snorkelling and diving.

Just 25 minutes away, hidden in the island's central highlands, Four Seasons Resort Lana'i, The Lodge at Koele broadens the options for dining and recreation and offers an

additional 40,579 square feet (3,770 square metres) of function spaces – mostly outdoors in picturesque garden settings. Guests enjoy convenient shuttle service and complete signing privileges at the island's only other resort property.

TRANSPORTATION

Air transportation

Lana'i Airport is located off Kaunalapau Highway approximately 3 miles (4.8 kilometres) west of Lana'i City, and features a paved runway 5,000 feet (1,524 metres) long and 150 feet (45.7 metres) wide. It has facilities to accommodate up to three corporate jets.

Island Air offers scheduled daily non-stop services between Lana'i City and Honolulu. Convenient charter services from all islands to Lana'i are offered by Island Air, Hawaiian Airlines, Marjet, Maui Air, Mokulele Air, Paragon Air, WT Air, Royal Hawaiian Air Service, Sunshine Helicopters, InterIsland Airways and Pacific Wings.

Ferry

The Expeditions passenger ferry offers daily services between Lahaina, Maui and the Manele Small Boat Harbor on Lana'i. Transfers to Four Seasons Resort Lana'i at Manele Bay are provided for registered guests with applicable fees.

WEATHER CHART

Month	°F		°C	
	Highs	Lows	Highs	Lows
January	86	/ 72	30	/ 22
February	87	/ 71	30	/ 21
March	87	/ 72	30	/ 22
April	88	/ 74	31	/ 23
May	89	/ 74	31	/ 23
June	91	/ 77	32	/ 25
July	92	/ 77	33	/ 25
August	93	/ 78	33	/ 25
September	93	/ 78	33	/ 25
October	92	/ 78	33	/ 25
November	90	/ 76	32	/ 24
December	88	/ 74	31	/ 23

DESTINATION

At the centre of the Hawaiian archipelago, a few miles west of Maui, the tiny island of Lana'i is an unspoiled paradise of spectacular sea coast and enchanting highland forest. The island is 98% privately owned – providing a sense of uncrowded natural calm unique within the Hawaiian islands.

Lana'i is approximately 13 miles (21 kilometres) wide and 18 miles (29 kilometres) long, with ground elevations varying from sea level to more than 3,400 feet (1,036 metres). The central landscape offers mist-shrouded mountains and forests of Cook Island pines where wild deer roam freely. The coastline is ringed by secluded white-sand beaches, rugged red lava cliffs and crystal-clear waters. A place of deep cultural significance, Lana'i features many historic sites, old fishing villages and unique topographical attractions. The island's only community is the quaint plantation town of Lana'i City, with a full-time population of just 3,000.

For nearly a century, Lana'i was home to Hawaii's largest pineapple plantation and was known as the Pineapple Island for its fields of golden pineapples. Now Lana'i has been transformed into an exclusive island destination with two Four Seasons resorts – each presenting a distinctive Hawaiian experience. Four Seasons Resort Lana'i at Manele Bay offers ocean-side relaxation and recreation, while Four Seasons Resort Lana'i, The Lodge at Koele offers dynamic sporting adventure in the green central highlands.

WEATHER

The climate of Lana'i is comfortably tropical. During the first three to four months of the year, long interludes of sunshine are interspersed with short periods of rainfall. The five-day weather forecast below is for Lana'i City, which is at an elevation of 1,700 feet (518 metres). On the coast, the weather is generally very dry and warmer by 10–15°F (5–8°C).

LOCAL ATTRACTIONS AND ACTIVITIES

At Four Seasons, you enjoy a unique vantage point from which to explore the sights, sounds and experiences around you. Begin with a tour of the Resort's art collection, then visit a nearby beach, go on a hiking excursion or take a day trip to Maui or Molokai. For a spectacular view of the island's varied landscape and scenic beauty, a helicopter tour offers a unique and exhilarating experience. We hope the highlights of local attractions below help simplify your planning. Please let us know how else we can assist you.

Onsite

Sweetheart Rock (Pu'u Pehe):

- Known as one of Lana'i's most recognisable landmarks, this towering rock rises out of the water between Hulopo'e Bay and Manele Bay. According to legend, a jealous warrior from Lana'i kept his beautiful maiden hidden in a sea cave near the rock, so no other man could see her. One day a storm came in, drowning her. Heartbroken, he carried her body to the top of the rock and buried her in a tomb that can still be seen today. He then leaped to his death. Sweetheart Rock is within walking distance of Four Seasons Resort Lana'i at Manele Bay.

Fishermen's Trail:

- Hike the challenging old Hawaiian Fishermen's Trail, located on a cliff with panoramic views of the Pacific Ocean.

Art Collection in the Resort:

- Four Seasons Resort Lana'i at Manele Bay features a museum-quality collection of art and artefacts from all over the world, including work by Lana'i artisans.

The Resort has created a podcast highlighting some of the art in the collection, and also featuring interviews with many of the artists and an original Hawaiian chant from Lana'i historian Kepa Maly. This podcast is available from the Concierge, or you can download the podcast by following this link.

Within a 5-minute drive of the Resort

Whale and dolphin watch:

- Lana'i is home to one of the largest schools of spinner dolphins in Hawaii, and from December to April it is also the calving and breeding grounds for hundreds of migrating humpback whales. Whale and dolphin boat excursions are available throughout the week; fees apply.

Within a 20-minute drive of the Resort

Daily Cultural Programmes:

- To experience some of Lana'i's history, explore the unique assortment of cultural programmes available to you. Some examples include the traditional arts of Hawaiian hula dancing, storytelling, history, music, lei making, pineapple creations and *lau hala* weaving.

Mike Carroll Gallery:

- Lana'i artist Mike Carroll's gallery and studio in Lana'i City will thrill your eyes and connect with your heart. Chat with the artist himself at his easel and discover some of the best emerging and established artists the islands have to offer.

Lana'i City:

- For a leisurely afternoon of shopping, visit charming Lana'i City. Centred around Dole Park, the city offers everything from fashionable island apparel and souvenirs to handmade gifts and art. Lana'i City is also home to the island's post office and movie theatre.

The Lana'i Art Center:

- This local Art Center has a gallery featuring work from over 20 talented Lana'i artists. The Center provides art experiences for residents and visitors in drawing, painting, fabric arts, children's arts and crafts, photography, digital arts, woodworking, pottery and traditional Hawaiian crafts. These are offered for all age levels and levels of expertise; private lessons are available.

Tropical Fruit Garden:

- Take a self-guided tour of the Tropical Fruit Garden as you stroll through groves of fragrant fruit and tropical trees, pineapple fields, citrus groves, banana and taro patches. Located at Four Seasons Resort Lana'i, The Lodge at Koele, these tropical plants and trees are representative of food sources and staples used today in Hawaii and Pacific Polynesia.

Orchid House and Gardens:

- The greenhouse at Four Seasons Resort Lana'i, The Lodge at Koele is filled with the sweet scents and vibrant colours of orchids, hanging ferns, potted palms and tropical flowers. On the walk up to the greenhouse you will enjoy a breathtaking view of the mountains and the lake. Admission is free.

Within a 25-minute drive of the Resort

Koloiki Ridge hike:

- Enjoy the seclusion of Lana'i as you hike to the Koloiki Ridge. This 5-mile (8-kilometre) hike offers the breathtaking views of the Pacific Ocean and the neighbouring islands of Moloka'i and Maui. Experience cool trade winds as you sit atop of this ridge and enjoy the beauty of Lana'i.

Within a 30-minute drive of the Resort

The Munro Trail:

- The Munro Trail is one of Hawaii's most popular excursions. The trail, approximately 12 miles (19 kilometres) long and takes two hours to cover, leads visitors through rainforests and up to the summit of Mount Lanaihale, 3,370 feet (1,027 metres) above sea level. This is the perfect vantage point from which to see the six other Hawaiian islands.

Within a 45-minute drive of the Resort

Petroglyphs at Shipwreck Beach:

- Petroglyphs are ancient drawings depicting people, animals and other objects, painstakingly carved onto rocks or old lava flows. Their exact meaning has always remained a mystery. While they can be found throughout Hawaii, one spot to view them is located near Shipwreck Beach. Here you will see images of men, women and children doing everything from hunting and fishing to surfing. Petroglyphs are an important piece of Hawaii's past; care needs to be taken while viewing them.

Shipwreck Beach (Kaiolohia):

- Though it is not safe for swimming, its beautiful views and magnificent shells make Shipwreck Beach (Kaiolohia) a favourite destination for visitors to Lana'i. The turbulent and unpredictable waters of the area have led many ships to an untimely end near here. The beach's main attraction is the famous shipwreck, which stands high on the reef. A World War II Liberty ship, it was one of three Navy vessels grounded here during the 1940s. The 8-mile (13-kilometre) beach is a great spot to sunbathe, enjoy a picnic, fish, walk and explore.

Within a 50-minute drive of the Resort

Garden of the Gods (Keahiakawelo):

- This mystifying scattering of rocks and boulders in varying shapes and colours forms what appears to be nature's very own rock garden. As beautiful as it is mysterious, the Garden of the Gods (Keahiakawelo) is a visual wonder, and so named because the giant stones evoked god-like images. The area offers some fabulous views and is accessible

by four-wheel-drive vehicle.

Within a 1.5-hour drive of the Resort

Polihua Beach:

- The name *Polihua* translates as *poli*, meaning cove or bay, and *hua*, meaning eggs. One of Lana'i's most beautiful beaches, it is famous for its nesting turtles. *Polihua* is a good beach to explore, or to relax and sunbathe on; however, swimming and surfing are not recommended because of the rough waters and powerful undertow.

Kaunolu Village:

- This historic Hawaiian fishing village is so steeped in history that it has been declared a National Historic Landmark. Reputedly established as long ago as the 15th century, the ruins of the ancient village are still standing.

Within a 2-hour drive of the Resort

Lopa Beach:

- With its soft sand and shallow waters, Lopa is a great spot for those who want to learn how to surf. Another of Lana'i's best beaches, it was once the location of four ancient Hawaiian fish ponds.

Within a 45-minute boat ride of the Resort

Maui day trip:

- A convenient and easy way to see Maui is to take the Expeditions Ferry, available daily (including holidays) from the Manele Bay Harbor. The Resort's shuttle service provides transfers between the Resorts and the Harbor. On Maui, the Expeditions Ferry docks at Lahaina Harbor, in the heart of historic Lahaina.

Lahaina, Maui:

- Visitors can easily spend a full day in Lahaina browsing the interesting shops, restaurants and galleries located steps from the Harbor. The Expeditions Ferry provides daily service between Manele Bay Harbor and Lahaina Harbor.

Within a 20-minute plane ride of the Resort

Molokai day trip:

- Molokai is the fifth largest island in the Hawaiian Archipelago - 38 miles (61 kilometres) long and 10 miles (16 kilometres) wide. Private charters are available from Lana'i City Airport to the Molokai Airport. The 20-minute flight is serviced by three charter carrier services. Reservations are required and can be made in advance at the Concierge desk.

CONFERENCE FACILITIES OVERVIEW

Total Space	55,682 sq.ft. 5,173 m ²
Largest Ballroom	13,582 sq.ft. 1,262 m ²
Meet and Feed (max. capacity)	600
Breakouts	5
Banquet (max. capacity)	600
Outdoor Banquet (max. capacity)	600
Private Dining (max. capacity)	-

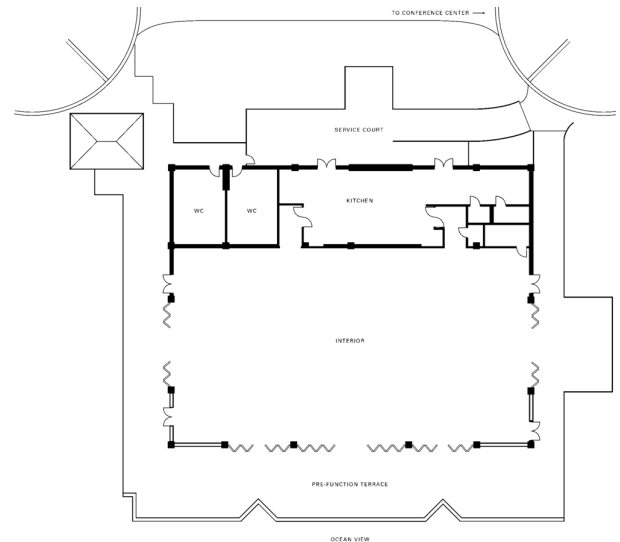
CONFERENCE FACILITIES

Dazzling events unfold indoors and out – all enhanced by breathtaking views of the coastline, ocean and neighbouring islands. Four Seasons Resort Lana'i at Manele Bay offers a total of 50,541 square feet (4,695 square metres) of flexible settings – perfect for small conferences, incentive meetings and weddings with up to 600 guests.

The Resort's Conference Center features the gracious Kaunolu Ballroom, plus five flexible function rooms and two shaded terraces. On an elevated hillside, Hale Halawai ("Meeting House") is an expansive tropically themed pavilion with glass walls that open to invite fresh ocean breezes.

Outdoor venues of 29,762 square feet (2,765 square metres) include the vibrant Luau Garden, just steps above the beach and ideal for hosting traditional Hawaiian parties. From its raised location, The Challenge at Manele Tee Box offers spectacular uninterrupted views and is the perfect setting for stargazing and fireworks. Event programmes may be organised in conjunction with The Lodge at Koele to offer the best possible combination of seaside and upcountry experiences.

Conference Center



TECHNICAL ASSISTANCE

Please contact your Conference Service Manager for state-of-the-art audiovisual equipment availability:

- Overhead projectors, LCD colour display panel, slide projectors
- Multi-image dissolve units and programmers
- Built-in and fast-fold screens and drape kits
- Video cameras, video projectors, video players
- Microphones, mixers, amplifiers
- Audio cassette players, CD players
- Stands, carts, easels, flipcharts, laser pointers
- Personal computers
- Wired or wireless Internet access in meeting rooms

MUSIC AND ENTERTAINMENT

Our Conference Service Managers will be happy to assist with setting up any type of

music or entertainment for your meeting or event needs.

RECEIVING AND MAINTENANCE

The Resort features a full-service shipping and receiving office. All packages should be sent to the attention of a group's name and your Conference Manager, to be stored in a separate conference storage area. As limited space is available for the storage of large items, please time shipping to the date of your arrival.

Receiving dock

Special arrangements can be made with your Conference Manager for delivery and storage of oversized items or environmentally sensitive equipment.

Post-conference shipping

Shipping of post-conference materials may be coordinated through your Conference Manager.

Maintenance

The Engineering Department is available from 6:00 am to 11:00 pm for general assistance with lighting, room temperature control and minor repairs.

DESTINATION MANAGEMENT

Our Conference Service Managers can help accommodate your group's special requests. For detailed information, please contact the Resort directly. In addition, we recommend the following destination management companies:

Island Partners Hawaii
505 Front Street, Suite 213
Lahaina, HI 96761-1187
Telephone: (808) 270-2408, ext. 208

MC&A
615 Piikoi Street, #1000
Honolulu, HI 96814
Telephone: (808) 589-5500
Fax: (808) 589-5501

Pacific Destination Services
355 Hukilike Street, Suite 204A
Kahului, HI 96732
Telephone: (808) 871-4466
Fax: (808) 871-7685

Panache
35 Hale Kuai Street #203
Kihei, HI 96753
Telephone: (808) 874-2700
Fax: (808) 874-8624

Trade-Winds Management Group, LTD.
P.O. Box 383279

Waikoloa, HI 96738
Telephone: (808) 883-1600
Fax: (808) 883-9598

Lanai Hospitality Partners
P.O. Box 630613
Lanai City, Lanai, 96763
Telephone: (808) 565-7211
Fax: (808) 737-7622

BUSINESS SERVICES

Around the clock, the Business Center at Four Seasons Resort Lana'i at Manele Bay, together with our resourceful multilingual Concierge, is on hand to assist you with business, entertainment or travel arrangements.

- 24-hour business services
- Audiovisual equipment
- Business equipment
- Cellular telephones
- Computers
- Secretarial service
- Translation and interpretation service
- Wired or wireless Internet access in meeting rooms

SPOUSE PROGRAMMES

The Resort would be pleased to arrange activities of interest to spouses of meeting participants:

- Cooking demonstrations
- Putting tournament
- Humpback whale- and spinner dolphin-watching
- Snorkelling, scuba diving, sailing
- Garden tours
- Guided island tours
- Day at The Spa
- Arts and craft classes

CHILDRENS AND FAMILY PROGRAMMES

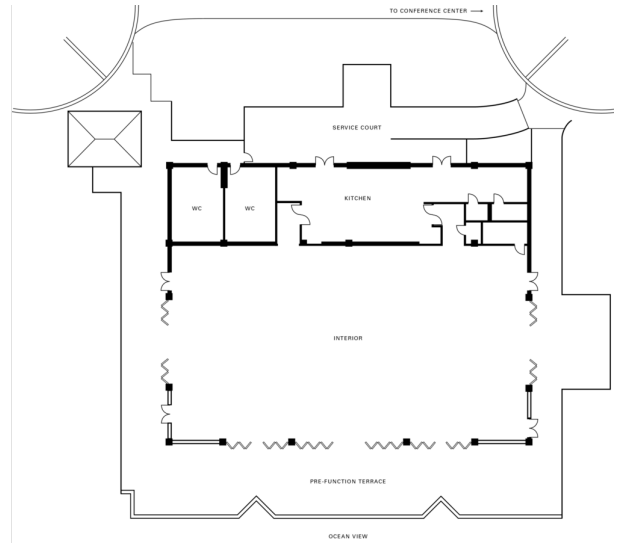
The Resort's Kids For All Seasons programme is fun for children and parents alike. We would also be pleased to help arrange appropriate off-site activities.

HALE HALAWAI BALLROOM

Dimensions	-
Size	7,690 sq.ft. 714 m ²
Height	16.6 ft 5.1 m

Capacities

Classroom	450
Theatre	900
Banquet Rounds	500



KAUNOLU BALLROOM

Dimensions	51 x 65 ft 15.5 x 19.8 m
Size	3,315 sq.ft. 307 m ²
Height	12 ft 3.7 m

Capacities

Classroom	120
Hollow square	60
U Shape	45
Theatre	300
Reception	200
Banquet Rounds	140

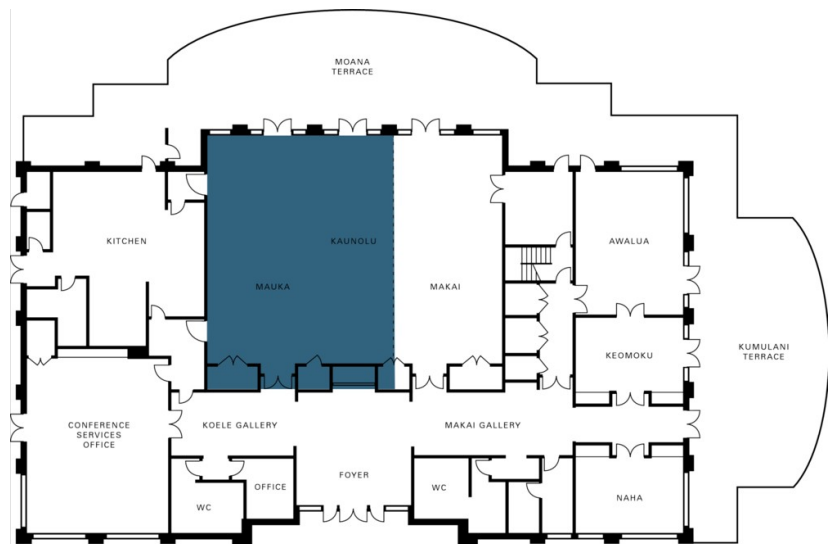


MAUKA BALLROOM

Dimensions	51 x 41 ft 15.5 x 12.5 m
Size	2,091 sq.ft. 194.3 m ²
Height	12 ft 3.7 m

Capacities

Classroom	80
Hollow square	40
U Shape	30
Theatre	200
Reception	200
Banquet Rounds	130

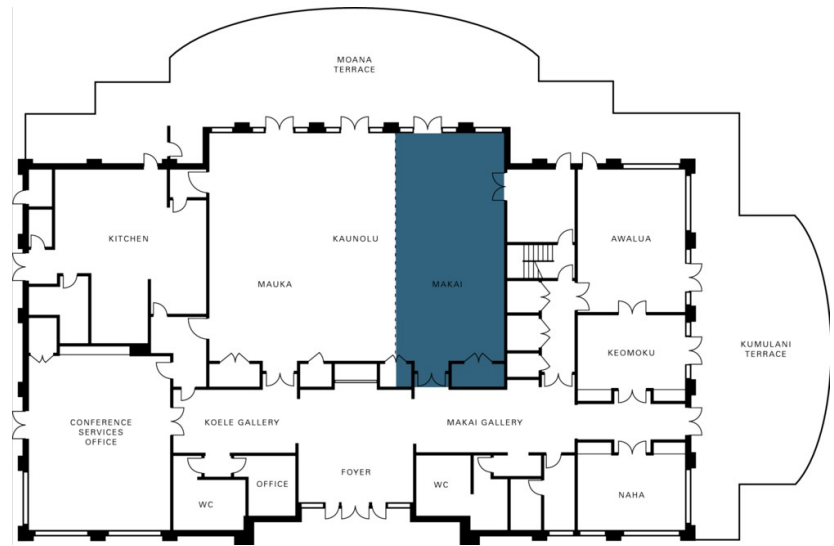


MAKAI BALLROOM

Dimensions	51 x 24 ft
	15.5 x 7.3 m
Size	1,224 sq.ft.
	113.7 m ²
Height	12 ft
	3.7 m

Capacities

Classroom	40
Hollow square	20
U Shape	16
Theatre	100
Reception	100
Banquet Rounds	60

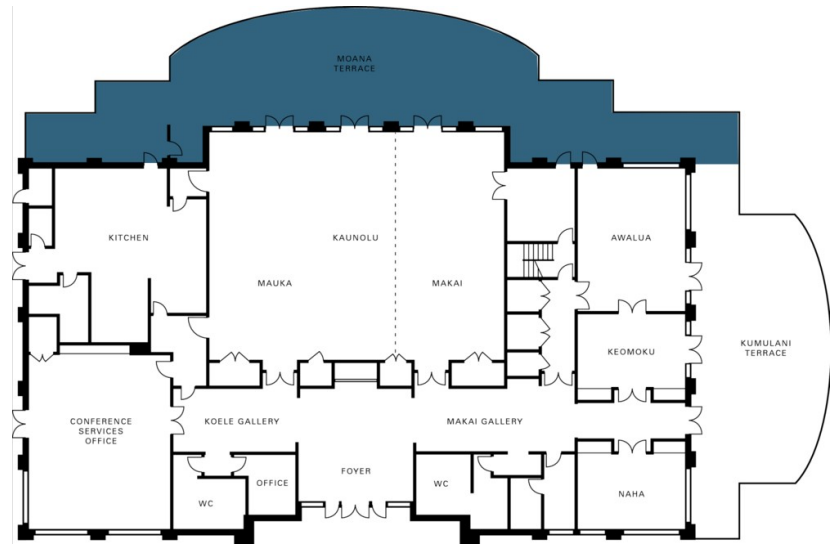


**BALLROOM PRE-FUNCTION AREA
(MOANA TERRACE)**

Dimensions	84 x 31 ft
	25.6 x 9.5 m
Size	2,604 sq.ft.
	242 m ²
Height	-
	-

Capacities

Reception	150
Banquet Rounds	90

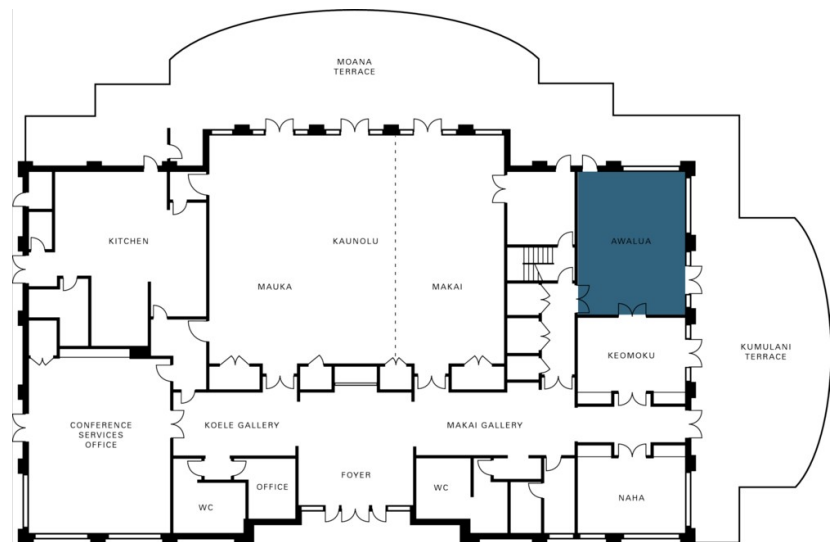


AWALUA ROOM

Dimensions	32 x 24 ft
	9.8 x 7.3 m
Size	768 sq.ft.
	71.3 m ²
Height	12 ft
	3.7 m

Capacities

Classroom	30
Hollow square	30
U Shape	25
Theatre	50
Reception	75
Banquet Rounds	50

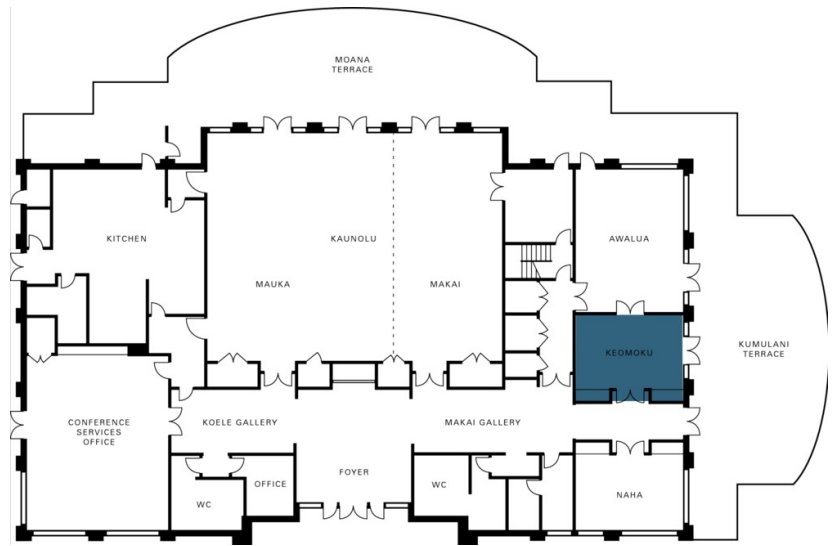


KEOMOKU BOARDROOM

Dimensions 17 x 24 ft
5.2 x 7.3 m
Size 408 sq.ft.
38 m²
Height 13 ft
4 m

Capacities

Boardroom 12

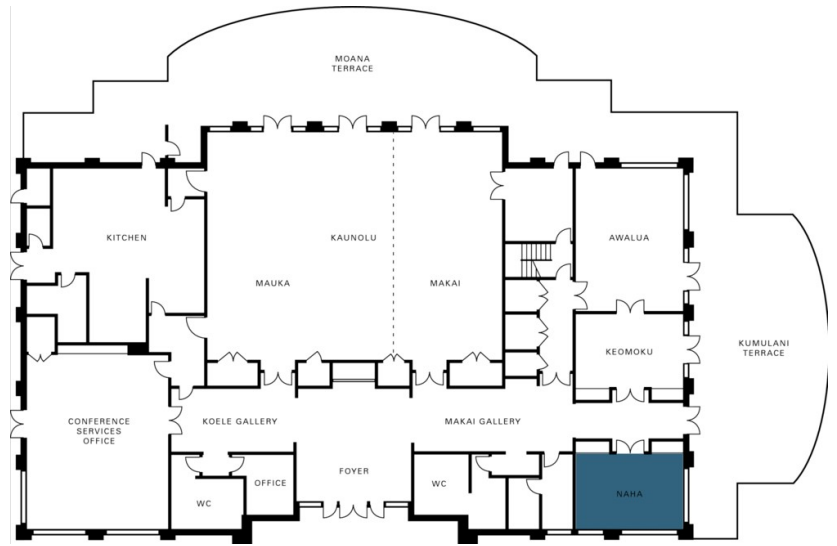


NAHA ROOM

Dimensions 17 x 24 ft
5.2 x 7.3 m
Size 408 sq.ft.
38 m²
Height 12 ft
3.7 m

Capacities

Classroom 15
Hollow square 18
U Shape 15
Theatre 30
Reception 25
Banquet Rounds 20

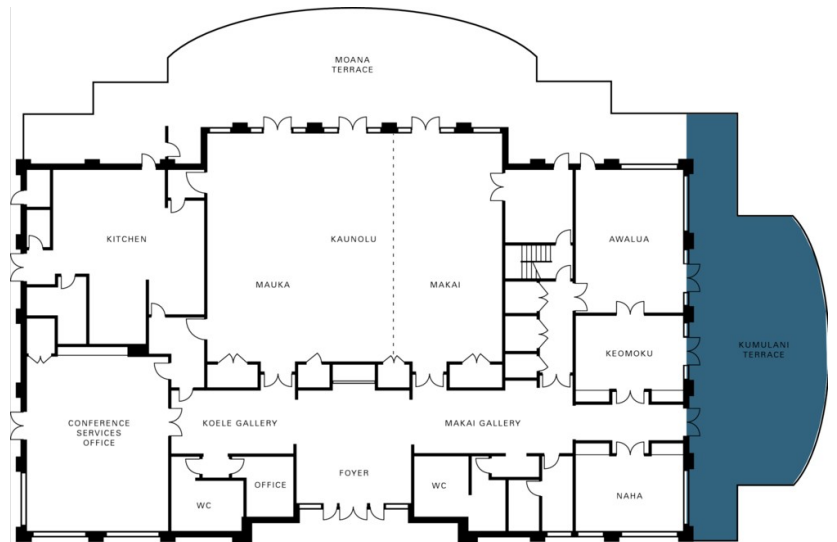


KUMULANI TERRACE

Dimensions 64 x 30 ft
19.5 x 9.1 m
Size 1,920 sq.ft.
178.4 m²
Height -
-

Capacities

Reception 100
Banquet Rounds 60



GUEST ROOMS, SUITES AND PRIVATE RESIDENCES OVERVIEW

Evoking a relaxed island feel, the Resort's 236 spacious guest rooms – including 21 suites – feature warm golden tones enhanced by rich cherry and rustic wicker furnishings along with tropical accents and East Asian influences. All rooms open to a private lanai – Hawaiian for a terrace or balcony – furnished with an inviting daybed, small dining table and two chairs. Views encompass lushly landscaped gardens or Hulopo'e Bay and the Pacific Ocean.

Standard amenities include a rattan writing desk, dual-line telephones with voice mail, an entertainment centre with a 40-inch (101-centimetre) LCD television and DVD player, and high-speed Internet access.

Deeply comfortable Four Seasons beds feature a custom two-poster headboard with a hand-carved pineapple motif, the symbol of Lana'i. Spacious bathrooms offer signature Four Seasons features: a marble double-basin vanity, deep soaking tub and separate glass-enclosed shower stall.

Room Category	#	Beds	Size (sq ft)	View (m ²)	View
- Prime Oceanfront Terrace Room	9	1 King	761	71	Panoramic ocean view
- Oceanfront Terrace Room	50	1 King or 2 double	592	55	Panoramic ocean view
- Ocean Terrace Room	41	1 King or 2 double	576	54	Hulopo'e Bay and surrounding coastline
- Partial Ocean Terrace Room	50	1 King or 2 double	576	54	Partial views of Hulopo'e Bay and surrounding coastline
- Garden Terrace Room	65	1 King or 2 double	576	54	Sculpted theme gardens
- Accessible Ocean Terrace Room		2 double	576	54	Hulopo'e Bay and surrounding coastline
- Accessible Garden Terrace Room		1 King	576	54	Sculpted theme gardens
- Ali'i Suite	1	1 King	2,700	251	Panoramic view of Hulopo'e Bay
- Hulopo'e Suite	1	1 King	1,776	165	Panoramic views of the Pacific Ocean
- Manele Bay Suite	1	1 King	1,809	168	Ocean view
- Prime Oceanfront Suite	2	1 King	1,500	139	Panoramic views of the Pacific Ocean
- Deluxe Oceanfront Suite	5	1 King	1,152	107	Panoramic views of the ocean and pool area
- Oceanfront Suite	4	1 King	900	84	Panoramic views of the Pacific Ocean
- Ocean-View Suite	2	1 King	1,152	107	Premium views of the Pacific Ocean
- Partial Ocean-View Suite	1	1 King	1,056	98	Partial views of Hulopo'e Bay and surrounding coastline
- Garden-View Suite	1	1 King	1,152	107	Sculpted theme gardens
- Superior Suite	3	1 King	1,056	98	Hillside fronting the Resort

Guest Room Overview

Generously proportioned Four Seasons guest rooms are located on the first and second floors, offering a variety of views. Garden Terrace Rooms overlook the lush greenery of the Resort's sculpted theme gardens, while Garden Ocean Rooms enjoy garden views plus

partial views of Hulopo'e Bay or the surrounding coastline visible from the lanai. Partial Ocean Terrace Rooms present partial views of Hulopo'e Bay and the coastline, and Ocean Terrace Rooms offer full ocean views. Larger Oceanfront Terrace Rooms provide panoramic views of the Pacific, while the expansive Prime Oceanfront Terrace Rooms enjoy unobstructed ocean vistas.

Suites Overview

With distinct areas for living and sleeping, Four Seasons suites add an extra measure of comfort and privacy – making them especially desirable for business meetings, entertaining and family travel. The décor offers a more formal ambience, with a blend of tropical and Asian design details accented with bright hues.

Most suites include one bedroom, but many may be configured with additional bedrooms through the addition of connecting rooms. Most are set on the second floor for elevated views and feature an extra-large private lanai furnished with a small dining set and lounge chairs and a daybed for reading and unwinding.

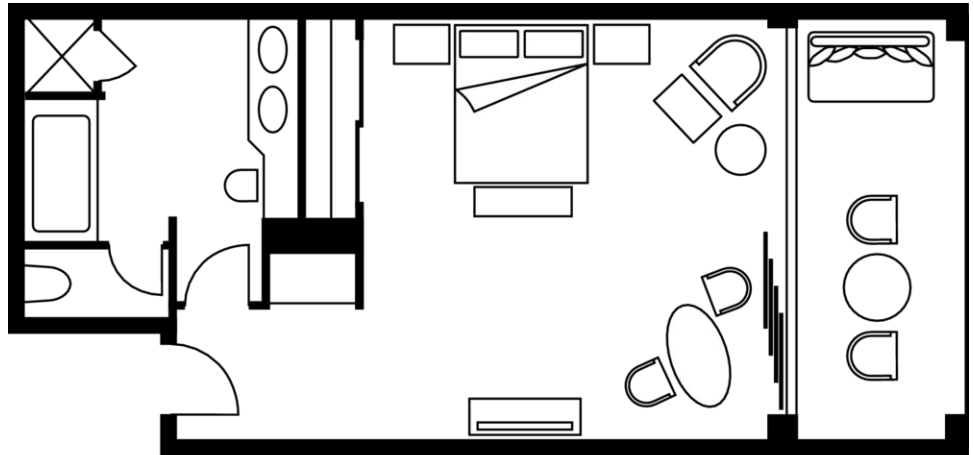
The spacious Superior Suites overlook the landscaped hillside fronting the Resort, and the Garden-View Suite gazes upon the lush greenery of the Resort's sculpted theme gardens. The Partial Ocean-View Suites combine garden views with partial views of Hulopo'e Bay and the surrounding coastline. The Oceanfront Suites offer stunning panoramas of the Pacific, while the Ocean-View Suites have premium views and the Deluxe Oceanfront Suites offer pool and ocean views. Lavish Prime Oceanfront Suites overlook spectacular ocean panoramas.

The Resort's most lavish suites offer the most spectacular Pacific views and are even larger in size, including a full bathroom as well as a guest powder room adjacent to the living area. In the Manele Bay Suite, the living area adjoins a dining area with a large table and small kitchenette/pantry. The exquisitely appointed Hulopo'e Suite includes a dining table seating six and a nearby pantry, and the master bathroom includes a 15-inch (38-centimetre) LCD television. The prestigious Ali'i Suite commands sunrise and sunset views from its oversized lanai. The living area is expansive and the dining area has a table that seats eight; a pantry is nearby.

OCEANFRONT TERRACE ROOM

Number 50
Beds One king or two double beds
Size 592 sq ft
55 m²

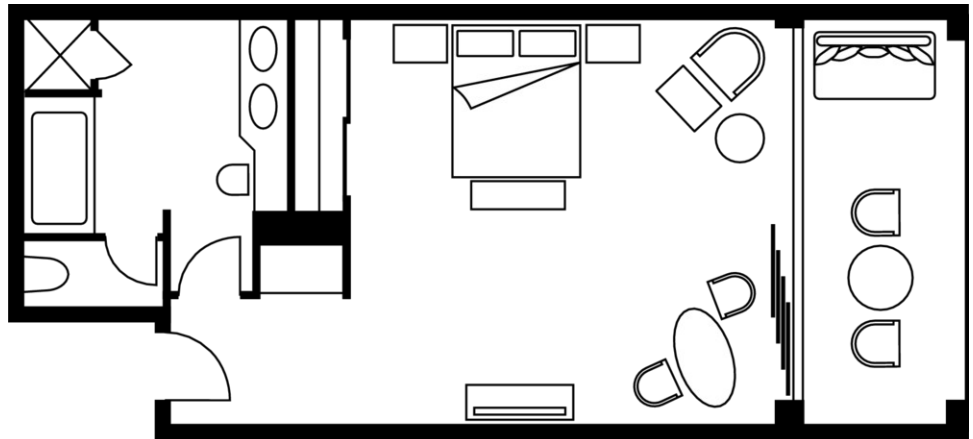
Location
1st and 2nd floors
View
Panoramic ocean view



OCEAN TERRACE ROOM

Number 41
Beds One king or two double beds
Size 576 sq ft
54 m²

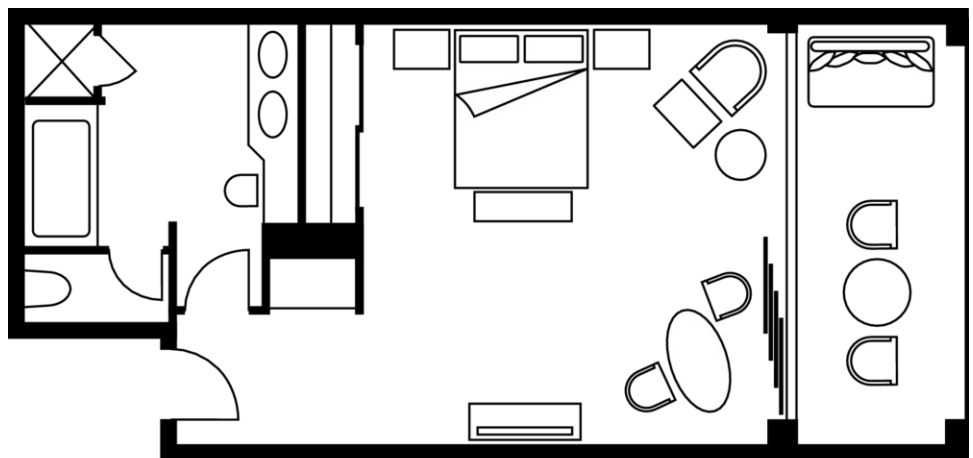
Location
1st and 2nd floors
View
Hulopo'e Bay and surrounding coastline



PARTIAL OCEAN TERRACE ROOM

Number 50
Beds One king or two double beds
Size 576 sq ft
54 m²

Location
1st and 2nd floors
View
Partial views of Hulopo'e Bay and surrounding coastline



GARDEN TERRACE ROOM

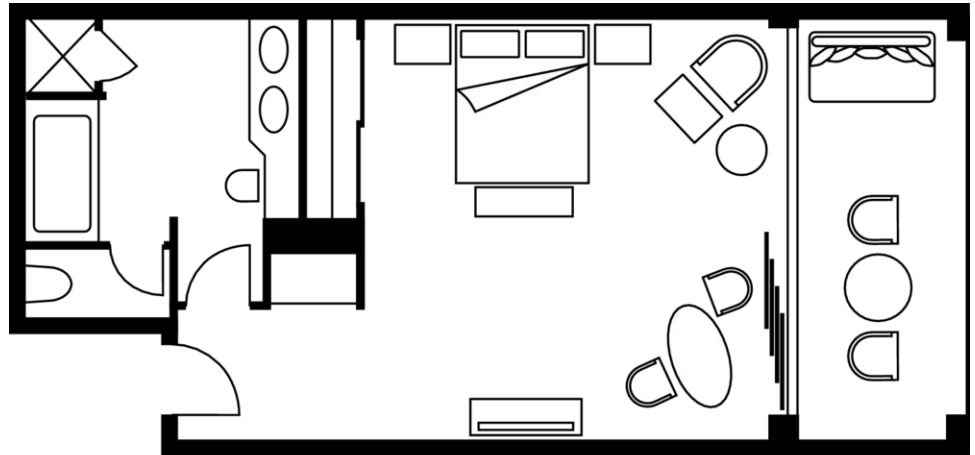
Number 65
Beds One king or two double beds
Size 576 sq ft
54 m²

Location

1st and 2nd floors

View

Sculpted theme gardens



ALI'I SUITE

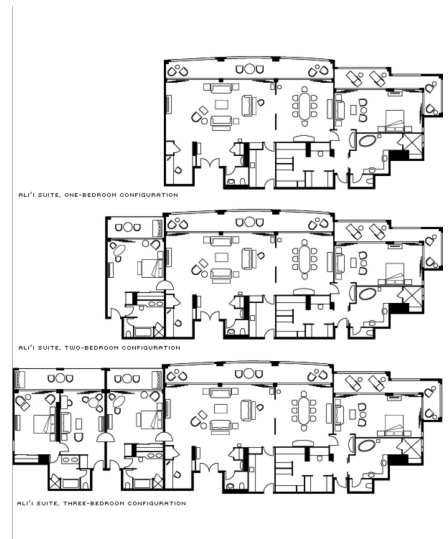
Number 1
Beds One king bed
Size 2,700 sq ft
251 m²

Location

2nd floor

View

Panoramic view of Hulopo'e Bay



HULOPO'E SUITE

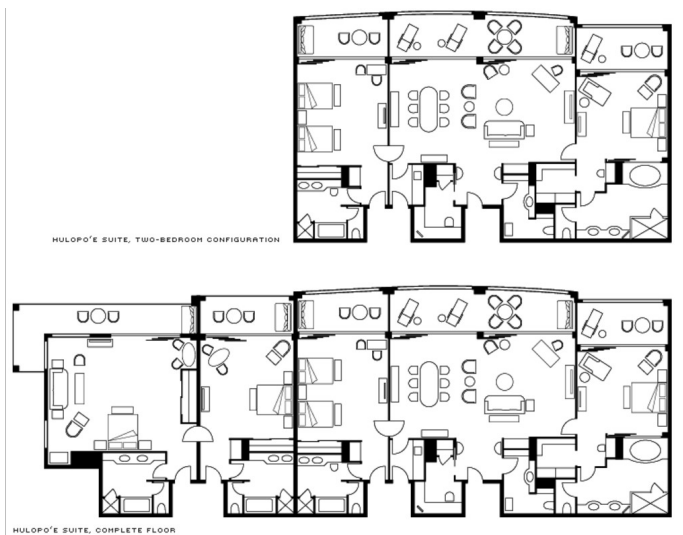
Number 1
Beds One king bed
Size 1,776 sq ft
165 m²

Location

2nd floor

View

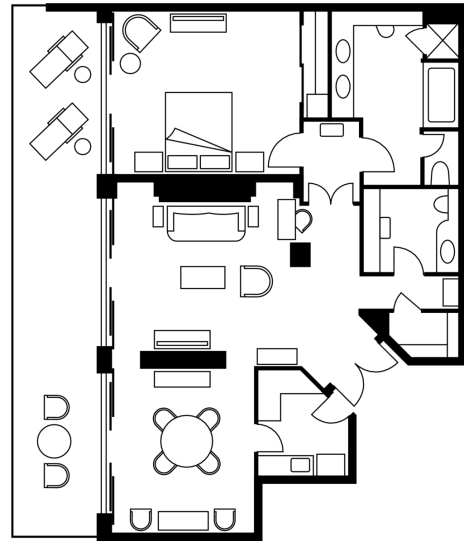
Panoramic views of the Pacific Ocean



MANELE BAY SUITE

Number 1
Beds One king bed
Size 1,809 sq ft
168 m²

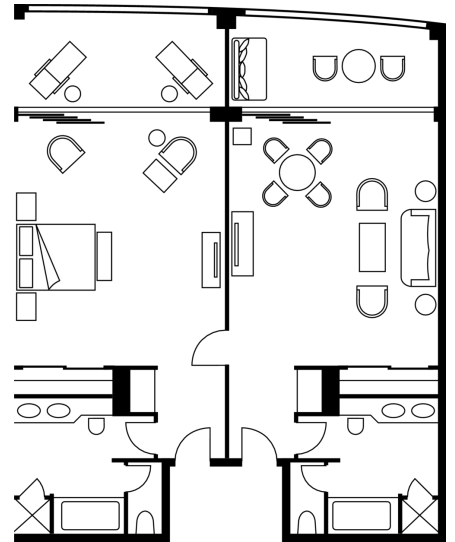
Location
2nd floor
View
Ocean view



DELUXE OCEANFRONT SUITE

Number 5
Beds One king bed
Size 1,152 sq ft
107 m²

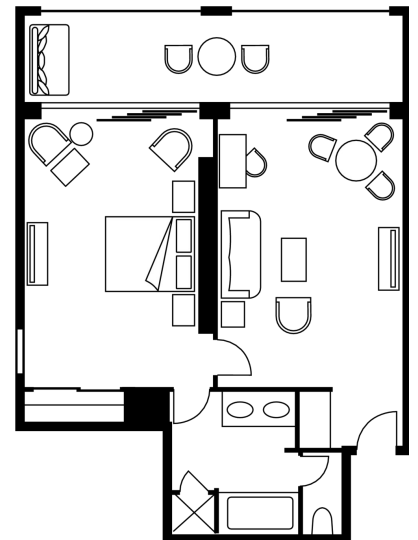
Location
2nd floor
View
Panoramic views of the ocean and pool area



OCEANFRONT SUITE

Number 4
Beds One king bed
Size 900 sq ft
84 m²

Location
1st and 2nd floors
View
Panoramic views of the Pacific Ocean



AMENITIES

- CD player
- Complimentary newspaper
- Down duvets
- Down pillows
- DVD player
- In-room safe
- Iron and ironing board
- Make-up mirror
- Multi-line telephone(s) with conference call capability
- Multi-line telephone(s) with voicemail
- Personal bar menu
- Tea/coffee maker
- Thick terry bathrobes
- Twice-daily housekeeping service with evening ice delivery
- Wired or wireless Internet access

GUEST SERVICES

- 24-hour In-Room Dining
- 24-hour laundry/dry-cleaning/pressing
- 24-hour multilingual Concierge
- Complimentary overnight shoeshine
- Gift shop
- Non-smoking rooms

VIP GIFTS AND WELCOME AMENITY

We offer an interesting selection of welcome amenities and gifts to purchase for your clients. All reflect the myriad cultural influences and island specialties of Lana'i.

DINING HOURS OF OPERATION

Fresco

Lunch

Every day 11:00 am - 4:00 pm

Happy hour

Every day 4:00 pm - 5:00 pm

Cocktails and appetisers

Every day 4:00 pm - 6:00 pm

Dinner

Every day 6:00 pm - 9:30 pm

Hulopo'e Court

Breakfast

Every day 7:00 am - 11:00 am

Breakfast buffet

Every day 7:00 am - 10:30 am

Dinner

Every day 6:00 pm - 9:30 pm

The Challenge at Manele Clubhouse

Every day 11:00 am - 3:00 pm

Ocean Hale

Day of leisure

Every day 10:30 am - 4:30 pm

Dinner

Every day 5:30 pm - 9:30 pm

Dining Room

Friday to Tuesday 6:00 pm - 9:30 pm

Terrace

Full breakfast 7:00 am - 11:00 am

Lunch 11:00 am - 2:00 pm

Dinner 6:00 pm - 9:30 pm

Hale Ahe Ahe Lounge

Every day 6:00 pm - 11:00 pm

Light menu

Every day 6:00 pm - 9:00 pm

Live music

Wednesday to Saturday 7:00 pm - 9:00 pm

The Bar

Every day 11:00 am - 11:00 pm

Light menu

Every day 11:00 am - 9:00 pm

Great Hall

DINING

Demonstrating the diversity of Lana'i, Four Seasons offers a remarkable range of restaurants and lounges – at Manele Bay, at The Lodge at Koele and at the golf clubhouses. Imaginative cuisine – prepared to unparalleled standards from the freshest local ingredients – is superbly executed and presented with Four Seasons flair.

RESTAURANTS

Fresco

Perched above Hulopo'e Bay, Fresco specialises in contemporary Italian cuisine made from the freshest local and organic ingredients, sourced directly from Hawaii's fishers and farmers. Served alfresco for lunch and dinner, innovative menus incorporate seasonal offerings that are proudly showcased in Chef Dario Montelverè's daily specials. Dinner choices include lobster ravioli with local seasonal vegetables and vanilla butter sauce; locally caught smoked ono accompanied by rainbow carrots, baby artichokes and salsa verde; and cappesante e pancetta with scallops and pork belly, candy apple purée and micro celery.

- Cuisine: Contemporary Italian
- Indoor seating: 140

Hulopo'e Court

Named after Hulopo'e Bay, the immaculate white-sand beach gracing Lana'i's shoreline, this ocean-view restaurant offers breakfast and an extensive steak and seafood dinner menu. With an emphasis on local ingredients, Chef Joseph Yapple showcases prime and wagyu beef from Snake River Farms and local Hawaiian catch, prepared to perfection. Traditional side dishes from a wide selection complement main courses, while an accomplished wine list features a variety of fine labels, which are showcased in Chef Dario Montelverè's exquisite cuisine.

- Cuisine: Steak and seafood, local ingredients
- Indoor seating: 145

The Challenge at Manele Clubhouse

Cliff-side dining at The Challenge at Manele Clubhouse is an inspiring motivator – or fitting celebration – for a day on the golf course. Savour island-influenced cuisine while enjoying panoramic ocean vistas and breathtaking fairway views. Ideal for lunch or afternoon refreshments.

- Cuisine: Island-influenced

Ocean Hale

Set ocean-side overlooking pristine Hulopo'e Bay, the Ocean sHale invites guests to enjoy a relaxing day of leisure or an evening of romance in a private and exclusive setting. Ocean Hale experiences range from an intimate lunch to sunset cocktails or a romantic private dinner by candlelight. Complete with personalized touches such as a private server and a tailored musical playlist, the Ocean Hale offers an unforgettable dining experience, which is showcased in Chef Dario Montelverè's exquisite cuisine.

- Outdoor seating: 6

Dining Room

Serving innovative cuisine in a refined, estate-like setting, the Dining Room embodies the elegance of The Lodge at Koele. Local estate-grown ingredients are prepared using avant-

garde variations on classical culinary techniques and matched by a comprehensive wine selection. A wood-burning fireplace, a focal point to the room, adds to the intimate atmosphere.

Terrace

At the Terrace, contemporary American cuisine mingles comfortably with traditional Hawaiian touches. Nightly specialties and inspired vegetarian options complement a unique array of appetisers and entrées. Located at the Lodge at Koele, the restaurant features stunning views of the gardens and Reflecting Pond.

LOUNGES

Hale Ahe Ahe Lounge

This open-air sports bar with dramatic views of the ocean offers a lively social atmosphere to gather and mingle. Guests can enjoy pool and other table games or relax with their favourite sports programme, broadcast on the Lounge's 46-inch (116-centimetre) LCD television.

- Indoor seating: 46

The Bar

The Bar offers a light menu complemented by creative cocktails and a wide selection of drinks designed to ward off chilly nights in the highlands.

- Indoor seating: 25

Great Hall

The Great Hall offers daily afternoon tea and a special hot chocolate menu, as well as *pupus* (appetisers), desserts, specialty cocktails and coffees. In the evenings, local musicians play Hawaiian music or Broadway favourites.

- Indoor seating: 48

Trophy Room

With shuffleboard, pool, foosball or a variety of other table games available, the Trophy Room is the perfect place to relax. In addition to games, guests can enjoy drinks and snacks while watching their favourite sports programme, broadcast on the bar's 46-inch (116-centimetre) LCD television.

RECREATION FACILITIES

In this vibrant Pacific-edge retreat, Four Seasons Resort Lana'i at Manele Bay inspires with dynamic activities including deep-sea fishing, snorkelling and diving. Two world-ranked golf courses make the most of island landscapes – both highland and ocean-side. For relaxation, there's the spa, pool and beach. Other recreation options are just 25 minutes away at Four Seasons Resort Lana'i, The Lodge at Koele, where traditional country activities range from horseback riding and clay shooting to lawn bowling and croquet.

SPA SERVICES

Delight the senses and soothe the soul at the Spa, where innovative body treatments, incorporating traditional Hawaiian techniques and local island ingredients, are offered alongside classical massages. The Spa's 11 treatment rooms include red cedar dry heat saunas, eucalyptus steam rooms and rainforest showers. An extensive menu of facials, manicures and pedicures adds to the experience.

- Number of treatment rooms: 11

FITNESS FACILITIES

Warm up for a golf game at the Fitness Center, featuring a new Movement Studio and state-of-the-art gym. Each piece of the complete range of cardiovascular equipment is positioned to offer spectacular views of the Pacific Ocean and is equipped with a 15-inch (38-centimetre) LCD television with personal headset. Personalised health and fitness consultation and instruction are also available on request.

- Size: Fitness Center: 1500
Movement Studio: 800 sq ft / Fitness Center: 140
Movement Studio: 74 m²

POOL

Manele Bay Pool

With stunning views of the Pacific, the Manele Bay swimming pool offers an alternative to the ocean and beach. Pool attendants regularly offer ice water, Evian spritzes, chilled towels and amenities. Two adjacent whirlpools offer the opportunity for enhanced relaxation.

The Challenge at Manele

High above the crashing surf of Hulopo'e Bay, The Challenge at Manele is an outstanding course that more than lives up to its name. Built on lava outcroppings, the course features three holes on cliffs, which use the Pacific Ocean as a water hazard. The five-tee concept challenges the best golfers – tee shots over natural gorges and ravines must be precise.

Designed by Jack Nicklaus, this dramatic, unspoiled natural terrain is a stunning backdrop, and every hole offers majestic ocean views. The winter months bring spectacular sightings of whales right from the fairways.

- Designer: Jack Nicklaus
- Number of holes: 18
- Par: 72
- Yardage: 7,039

The Experience at Koele

Designed by golf legend Greg Norman and architect Ted Robinson, this championship course offers stunning views of mountains and lush greens, with the ocean in the distance. It offers dramatic contrast to The Challenge at Manele, with a cooler climate, wooded slopes, manicured bunkers and terraced water hazards.

- Designer: Greg Norman and Ted Robinson
- Number of holes: 18
- Par: 72
- Yardage: 7,014

TENNIS

Managed by world-renowned Peter Burwash International, the Resort's tennis facilities include three outdoor Premier cushion courts. Professional instruction, equipment and tennis apparel are available from the pro shop.

There is no shortage of activities available to guests of Four Seasons Resort Lana'i at Manele Bay. Whether you crave a day at the beach or a real adventure, the Resort offers a range of land activities – from mountain biking to horseback riding – and all kinds of water adventures, including scuba diving and sailing.

The waters of Hulopo'e Bay are a protected marine preserve. The bay's exceptionally clear waters and beautiful, virtually undisturbed coral reefs offer pristine spots for snorkelling and diving – some of the best in Hawaii. Spinner dolphins and colourful reef fish are frequently seen close to the shoreline, and humpback whales often make an appearance during the winter months.

Diving

DIVING

Scuba diving

With its protected bays and coves, Lana'i is the perfect location for first-time and experienced scuba divers alike. One-tank introductory and certified beach dives are offered at Hulopo'e Bay, a protected marine preserve known for its crystal-clear waters, abundance of colourful reef fish, beautiful coral reefs and diverse marine life.

From underwater coral grottoes and lava caves to safe encounters with tropical sea life, dives at Hulopo'e Beach, the Cathedrals, Kaunolu or Three Stone are part of an unforgettable Lana'i experience. Weekly activities are offered, such as Introductory and One-tank Beach Dives, and for experienced divers, the Lana'i Two-tank Dive and Friday Drift Dive.

With over 30 dive sites on Lana'i, dive excursions vary throughout the week to ensure that guests experience the best dive sites the island has to offer. Cathedrals, one of the premier dive sites in the world, features a large lava tube, home to rare coral and fascinating marine life.

WATER SPORTS

Deep sea fishing

Anglers seeking small- or big-game fish enjoy a sportsman's paradise on Lana'i, where the quarry is mahi mahi, wahoo, yellowfin tuna or even the Pacific blue marlin. Experience the adrenaline rush of a prize catch in some of the world's richest fishing grounds.

Location: Four Seasons Resort Lana'i at Manele Bay

Snorkelling

Lana'i has been rated one of the top 10 snorkelling sites in the world, and Hulopo'e Bay, with the island's finest white-sand beach, is teeming with colourful reef fish and protected marine species, including green sea turtles and spinner dolphins. The waters of this marine sanctuary are exceptionally clear, and the beautiful coral reefs virtually undisturbed.

To allow you to enjoy Lana'i's underwater world, the Resort's beach kiosk offers complimentary snorkelling equipment. Snorkels, fins and masks (including prescription masks) are offered, and a wide range of instruction, as well as advanced snorkels, are offered daily. Special activities are organised on a weekly basis, including the Lana'i Ultimate Adventure (snorkelling and jeep safari) and Snorkel Sail (fees apply).

Location: Four Seasons Resort Lana'i at Manele Bay

Hulopo'e Bay Beach and Marine Preserve

At the foot of Four Seasons Resort Lana'i at Manele Bay is Hulopo'e Beach, an idyllic stretch of white sand with picnic facilities, shady palms and gentle waves for swimming and splashing. It's common to see spinner dolphins close to the shoreline, and humpback whales during the winter months. The waters offshore are a protected marine preserve, with snorkelling and diving spots that are among the best in Hawaii.

Location: Four Seasons Resort Lana'i at Manele Bay

Surfing

Surfing is one of the oldest continuously practised sports in the world, as well as one of the fastest growing. Captain Cook discovered the Hawaiian kings riding waves hundreds of years ago, and the sport is now practised all over Hawaii.

Experience a sport once reserved only for the *Ali'i* (Hawaiian chiefs) as you embark on a half-day of private surfing lessons. Champion surfer and Lana'i resident Nick Palumbo will teach beginners on longboards while educating them on the island, the sport and Hawaiian culture. Advanced lessons are also available on shortboards for experienced surfers. Nick Palumbo won the Hawaii State Championship, Junior Men's Division, and the Quicksilver Makahiki at Mahala.

Land sports

LAND SPORTS

Croquet

British and American croquet are offered on three lawns. Equipment is provided and instruction is available.

Location: Four Seasons Resort Lana'i, The Lodge at Koele

Executive putting course

Our Executive putting course offers a unique challenge with an innovative 18-hole, par-51 design. Putters, golf balls and score cards are provided.

Location: Four Seasons Resort Lana'i, The Lodge at Koele

Hiking

Fascinating hiking routes are available. Take a self-guided walk along white sand beaches

and enjoy Lana'i's natural beauty and breathtaking coastline.

Enjoy the solitude of Lana'i as you begin your hike through the forested hills and valleys of the Koele uplands. The forest canopy, with its filtered sunlight, gives way to open vistas and steep ravines once carved by flowing lava streams. Two valleys drop sheer on both sides of the centre ridge as the islands of Moloka'i and Maui thrust skyward across the northern horizon.

Location: Four Seasons Resort Lana'i, The Lodge at Koele

OFF-SITE RECREATION

4x4 off-roading excursion

Polihua Beach and Shipwreck Beach

With only 30 miles (48 kilometres) of paved road, the island of Lana'i is well suited to off-roading. Explore miles and miles of the island's rugged terrain while taking in the scenery of the Munro Trail, Garden of the Gods, Polihua Beach and Shipwreck Beach. Take along a Four Seasons picnic for a private, unforgettable experience at the location of your choice. Jeep rentals and guided tours are offered, satisfying all levels of adventurer.

LAND SPORTS

Horseback riding – Stables at Koele

Discover the timeless landscapes of Lana'i on horseback. Explore wooded upland trails and hidden valleys – home to axis deer, pheasant, mouflon sheep and turkey – and come upon magnificent vistas of neighbouring islands. The Stables at Koele offer modern facilities with expert staff on hand to guide and recommend trail rides to suit your riding experience. Kind and gentle, the horses are suitable for all levels of rider, whether beginner or experienced. Fees apply.

Location: Four Seasons Resort Lana'i, The Lodge at Koele

Lana'i Pine sporting clays and archery range

Our expansive highlands centre features a 14-station sporting clay course, a skeet field, wobble traps, a compact sporting range, a 12-station archery range and a 6-station air rifle range.

One of the most challenging sporting clay sites in the world, the facility features a dramatic landscape of deep gulches and ravines, vast expanses of pampas grass and groves of Australian pine and lantana brush. With each station offering sporting clays launched to simulate flight patterns of duck, quail, dove, pheasant and even running rabbit patterns, this course offers endless challenge and entertainment. Beginners are introduced to the sport with a 45-minute lesson from a certified instructor, who emphasises the essence of the sport and gun safety. Fees apply.

Location: Four Seasons Resort Lana'i, The Lodge at Koele

Lawn bowling

Lawn bowling greens are available, with equipment and lessons provided.

Location: Four Seasons Resort Lana'i, The Lodge at Koele

www.fourseasons.com/manalebay

Rooms	Dimensions		Size		Height		Classroom	Hollow square	U-shape	Theatre	Reception	Banquet rounds	Conference/boardroom
	(ft)	(m)	(sq ft)	(m2)	(ft)	(m)							
- The Library	36 x 14	11 x 4.3	504	46.8	9.5	2.9	-	12	9	20	25	20	14
- Coral Villa	36.5 x 29	11.1 x 8.8	1,058	98.3	10	3	-	-	-	-	40	24	-
- Hale Halawai Ballroom	-	-	7,690	714	16.6	5.1	450	-	-	900	-	500	-
- Kaunolu Ballroom	51 x 65	15.5 x 19.8	3,315	307	12	3.7	120	60	45	300	200	140	50
- Mauka Ballroom	51 x 41	15.5 x 12.5	2,091	194.3	12	3.7	80	40	30	200	200	130	36
- Makai Ballroom	51 x 24	15.5 x 7.3	1,224	113.7	12	3.7	40	20	16	100	100	60	20
- Ballroom	84 x 31	25.6 x 9.5	2,604	242	-	-	-	-	-	-	150	90	-
Pre-Function Area (Moana Terrace)													
- Awalua Room	32 x 24	9.8 x 7.3	768	71.3	12	3.7	30	30	25	50	75	50	20
- Keomoku Boardroom	17 x 24	5.2 x 7.3	408	38	13	4	-	-	-	-	-	-	12
- Naha Room	17 x 24	5.2 x 7.3	408	38	12	3.7	15	18	15	30	25	20	12
- Kumulani Terrace	64 x 30	19.5 x 9.1	1,920	178.4	-	-	-	-	-	-	100	60	-
- Lu'au Gardens	121 x 156	36.9 x 47.5	18,876	1,753.6	-	-	-	-	-	-	500	450	-
- The Challenge at Manele Tee Box	120 x 80	36.6 x 24.4	9,600	891.8	-	-	-	-	-	-	400	300	-