

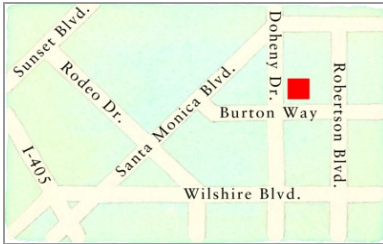


Quick Reference Guide

Last updated May 3, 2012 | For additional information please contact the hotel directly

Four Seasons Hotel Los Angeles at Beverly Hills
300 South Doheny Drive, Los Angeles, California, 90048, U.S.A.
Tel 1.310.273.2222 | Fax 1.310.859.3824 | Res 1.310.786.2227

www.fourseasons.com/losangeles



300 South Doheny Drive
Los Angeles, California 90048,
U.S.A.
Tel 1.310.273.2222
Fax 1.310.859.3824
Res 1.310.786.2227

AIRPORT

- Los Angeles International Airport (LAX): 30 to 45 minutes (15 miles/24 kilometres)

TABLE OF CONTENTS

- 2 Introduction
- 4 Destination
- 9 Conference Facilities
- 16 Guest rooms, Suites and Private Residences
- 21 Dining
- 22 Recreational Facilities
- 23 Appendix: Conference Chart

A garden sanctuary of sunlight and serenity, Four Seasons resides on a quiet, palm-lined boulevard – close to business areas and designer shopping on Rodeo Drive and Robertson Boulevard. Understated yet glamorous, this celebrated Beverly Hills hideaway offers a privileged LA experience.



Within a neighbourhood of quiet prestige, set back on the impressive palm-lined boulevard of South Doheny Drive, Four Seasons Hotel Los Angeles at Beverly Hills offers a haven of stylish comfort and relaxed Californian attitude. The Hotel is a serene 16-storey residence, nestled in a garden sanctuary of tropical flowers and greenery. The lobby and public areas greet guests with an abundance of white lilies and chic floral arrangements.

The Hotel's 285 spacious guest rooms – including 96 suites – all feature step-out balconies presenting unobstructed views of the lushly landscaped gardens, Beverly Hills and downtown Los Angeles. Two of LA's most desirable meeting places are right in the lobby: Culina, Modern Italian for indoor-outdoor dining and Windows Lounge for see-and-be-seen cocktails. For events, there's 9,650 square feet (896 square metres) of sunlit function space, including the Ballroom and 10 meeting rooms.

Glamorous Beverly Hills relaxation awaits on the fourth-floor pool and fitness terrace

with elevated city views. The full-service Spa indulges with an array of body and facial treatments. Unwavering Four Seasons care enhances each guest's experience with a sense of confidence, comfort and peace of mind.

TRANSPORTATION

Los Angeles is served by the Los Angeles International Airport (LAX) and Burbank Airport and by all major domestic and international carriers. Travel time from LAX to the Hotel is 30 to 45 minutes and from Burbank around 45 minutes. All major rental car companies serve the airports, with Beverly Hills Rent-A-Car on site at the Hotel. Taxi and limousine services are available at the airports and through the Hotel Concierge.

WEATHER CHART

Month	°F		°C	
	Highs/Lows	Highs/Lows	Highs/Lows	Highs/Lows
January	65	/ 45	18	/ 7
February	66	/ 48	19	/ 9
March	69	/ 50	21	/ 10
April	71	/ 53	22	/ 12
May	74	/ 56	23	/ 13
June	77	/ 59	25	/ 15
July	83	/ 63	28	/ 17
August	83	/ 63	28	/ 17
September	82	/ 61	28	/ 16
October	77	/ 57	25	/ 14
November	73	/ 52	23	/ 11
December	68	/ 49	20	/ 9

DESTINATION

The west-coast capital of business and entertainment, Los Angeles is known as the City of Angels. Originally a sleepy little town, Los Angeles grew slowly until the discovery of oil at the close of the 1800s. But it was the silver-screen era that turned Los Angeles into a boomtown – with the idyllic Southern California climate allowing filming to take place outdoors all year round.

The exclusive community of Beverly Hills is midway between downtown Los Angeles and Pacific Ocean beaches. Simultaneously a small town and a highly sophisticated city, Beverly Hills is both a glamorous, trend-setting destination for shopping and dining and a quietly elegant residential enclave favoured by Hollywood's elite.

Within this palm-lined residential neighbourhood stands Four Seasons Hotel Los Angeles – in close proximity to downtown Beverly Hills, the setting for world-famous Rodeo Drive, as well as other dynamic shopping areas on Robertson Boulevard, Melrose Avenue and Third Street. Just as close to major business centres, Four Seasons provides best-of-both-worlds convenience.

WEATHER

The sun-soaked City of Angels offers comfortable temperatures year-round. Offshore breezes keep the coast cooler in August and September, while city-centre temperatures reach close to the mid-80s°F (30°C). Winter temperatures, 65°F (18°C) on average, are cooler in the early morning and warmer by mid-day.

LOCAL ATTRACTIONS AND ACTIVITIES

At Four Seasons Hotel Los Angeles, you enjoy a unique vantage point from which to explore the sights, sounds and experiences around you. We hope the highlights of local attractions below help simplify your planning. Please let us know how else we can assist you.

Within a 5-minute drive of the Hotel

The Museum of Television and Radio:

- The Museum offers a complete history of radio and television at its new Beverly Hills location.

Rodeo Drive:

- Located on the west side of Los Angeles' metropolitan area, Rodeo Drive is a legend in itself, providing an exciting spot for people-watching, dining and upscale shopping.

Within a 10-minute drive of the Hotel

Los Angeles County Museum of Art:

- The grande dame of Los Angeles's Museum Row is the Los Angeles County Museum of Art. More than 150,000 works from around the world are featured in the museum's permanent collection, including paintings, drawings, prints and sculptures by masters such as Rembrandt, Monet and Matisse. Major exhibitions of ancient Roman artworks, bronze sculptures from southeast Asia, 16th-century textiles, decorative arts and photography attract 600,000 visitors each year. The museum hosts more than 30 special shows annually; recent exhibitions focused on Picasso, Chagall, David Hockney

and Frank Lloyd Wright.

Shopping Centres:

- There are a number of shopping centres just minutes from the Hotel, including the Beverly Center, the Century City Shopping Center and the Grove, featuring stores such as Bloomingdale's, Barneys New York, Neiman Marcus and Saks Fifth Avenue.

Rancho Park Golf Course:

- The course is nearby public with driving range, putting green and pro shop.

Museum of Tolerance:

- Focusing on issues of intolerance, both domestic civil rights and worldwide prejudice, the Museum features artifacts from Auschwitz and personal items once belonging to Anne Frank; photographs and video testimonies by Holocaust survivors are particularly hard-hitting.

Petersen Automotive Museum:

- Recognised internationally for its innovative design, it is dedicated to the interpretive study of the automobile and its influence on our life and culture. Encompassing more than 300,000 square feet (28,000 square metres), its exhibits and lifelike dioramas feature more than 150 rare and classic cars, trucks and motorcycles.

Within a 15-minute drive of the Hotel

UCLA Hammer Museum:

- Paintings by old masters, Impressionists and Post-impressionists are featured, including masterpieces by Rembrandt, Cassat, Monet and van Gogh. The UCLA Grunwald Center for the Graphic Arts, which is also part of the museum, includes prints, drawings, photographs and artist's books from the Renaissance to the present.

Shubert Theater:

- The Theater offers top Broadway musicals.

Grauman's Chinese Theater:

- Hollywood comes alive as visitors stroll the Walk of Fame, which commemorates celebrities whose names appear on bronze stars on the sidewalk, or compare footprints of the stars in the courtyard of Grauman's Chinese Theater.

Within a 20-minute drive of the Hotel

Hollywood Bowl:

- The summer home of the Los Angeles Philharmonic and also hosts outdoor concerts by top classical, popular and jazz artists.

Hollywood Sign:

- The 50-foot-high (15-metre) Hollywood Sign is one of Hollywood's most famous landmarks, stretching across the top of Mount Lee.

Pantages Theater:

- A classic Hollywood theatre featuring Broadway and off-Broadway plays and musicals.

Henry Fonda Theatre:

- An old Hollywood theatre featuring plays and one-man shows.

Hollywood & Highland/Kodak Theatre:

- As the new epicentre of pop culture, Hollywood and Highland represents the dramatic revitalization of the entertainment, dining, retail, tourism and history that have defined the world's movie-making capital for almost a century. With 640,000 square feet (60,000 square metres) of one-of-a-kind shops, restaurants, broadcasting facilities, and cinemas – plus the world's only live broadcast performing arts theatre and the new home of the Academy Awards presentations – this spectacular destination pays homage to the movie industry's illustrious past and hails the new glory days of Hollywood.

Walt Disney Concert Hall:

- The fourth and most recent addition to the Music Center of Los Angeles County. Designed by the internationally renowned architect, Frank Gehry, the 293,000 square-foot (27,220 square-metre) Concert Hall features a wavy, steel exterior designed to resemble a ship with its sail in full mast, representing Gehry's wish to create the feeling of travelling along a ceremonial barge to music. The centerpiece of the Concert Hall, a 2,265-seat auditorium with natural lighting in which the audience surrounds the orchestra, was designed to look and feel like the ship's hull.

Within a 30-minute drive of the Hotel

Dorothy Chandler Pavilion:

- Home of the Los Angeles Opera and Music Center Dance.

Natural History Museum of Los Angeles County:

- One of the nation's largest natural history museums, this destination features a popular insect and bird section and a great dinosaur exhibit.

California Science Center:

- At the West Coast's largest hands-on science center, kids and families can learn about human inventions and innovations. Popular exhibits include Ecosystem, Science in Toyland, Air and Space and more.

Santa Monica Pier:

- The pier in Santa Monica is filled with carnival rides and games for all ages to enjoy. Visit the Santa Monica Pier Aquarium and take a ride on the 1922 vintage carousel, rent a Segway or bicycle in Santa Monica or a visit the new dining and shopping destination, Santa Monica Place.

J. Paul Getty Museum:

- The Museum caught the world's attention when it opened five years ago. Richard Meier's architecture is stunning, and the hilltop site allows breathtaking city vistas. Paintings, decorative arts, photographs, manuscripts and drawings are divided among five galleries. You can see works by Rembrandt, Monet, Cézanne, Leonardo da Vinci and Michelangelo; van Gogh's "Irises" is the top draw. Robert Irwin's Central Garden offers an intriguing resting place. Parking reservations are required.

Olvera Street:

- The birthplace of Los Angeles over 200 years ago, Olvera Street is today a bustling cobblestone street filled with colourful shops selling Mexican wares and restaurants serving tasty Mexican cuisine.

Third Street Promenade:

- Located in Santa Monica, the Promenade has shops, movies and restaurants.

Venice Beach Boardwalk:

- Featuring everything from the wild to the bizarre, a "must see" while in Los Angeles, with one-of-a-kind shops. High-speed in-line skaters, musicians and all walks of life enjoy this mile-long stretch on the Pacific Ocean.

Santa Monica and Malibu Beaches:

- Two popular beaches are those at Santa Monica and Malibu. Other outdoor activities in the area include horseback riding in Griffith Park and hiking on Mount Wilson.

Autry Museum of Western Heritage:

- Founded by Gene Autry, the museum is devoted to preserving and interpreting the rich history and traditions of the American West. With one of the most comprehensive collections of western history and art, its seven permanent galleries and special exhibitions offer material gathered from the many cultures and events that have shaped the legacy of this vast region.

Skirball Cultural Center:

- Noah's Ark at Skirball occupies an 8,000-square-foot (743-square-metre) gallery and welcomes children and families to take a journey together. Inspired by the ancient flood story, the exhibit features a floor-to-ceiling wooden ark, filled with whimsical animals, in which families can play, build, climb, explore and collaborate.

Within a 45-minute drive of the Hotel

Norton Simon Museum:

- Celebrating a comprehensive new expansion and renovation, orchestrated by architect Frank O. Gehry, the stellar collection features masterworks from the Renaissance to the 20th century by van Gogh, Renoir, Manet, Degas, Goya, Picasso, Rembrandt and others. The sculpture garden has been completely re-landscaped and transformed.

The Huntington Library, Art Collections, and Botanical Gardens:

- Set on 150 stunning acres (61 hectares), the sumptuous galleries and library showcase rare books, manuscripts and 18th to 20th-century art.

Within a 1-hour drive of the Hotel

Disneyland:

- World-famous Disneyland features dining, shopping, entertainment and more than 55 adventures and attractions in seven magical theme lands. Mickey Mouse's theme park celebrates its 50th anniversary with the new Buzz Lightyear Blasters ride, "Walt Disney's Parade of Dreams" and a new fireworks extravaganza "Remember...Dreams"

Do Come True.”

CONFERENCE FACILITIES OVERVIEW

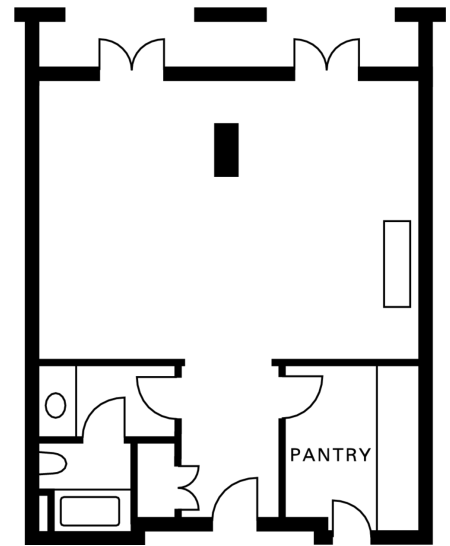
Total Space	9,650 sq.ft. 896 m ²
Largest Ballroom	4,200 sq.ft. 390 m ²
Meet and Feed (max. capacity)	100
Breakouts	9
Banquet (max. capacity)	250
Outdoor Banquet (max. capacity)	200
Private Dining (max. capacity)	40

CONFERENCE FACILITIES

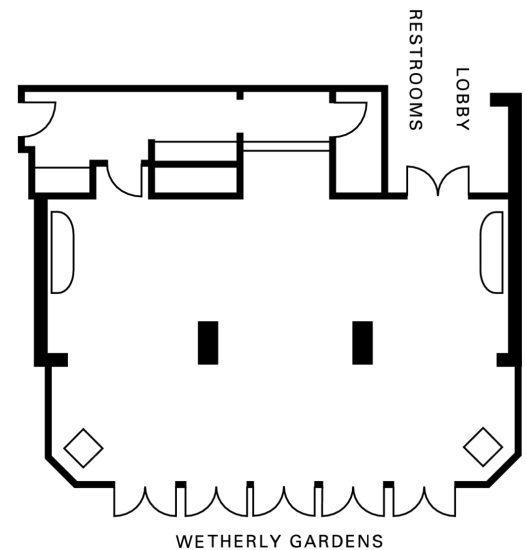
For business or social occasions of sophistication and warmth, Four Seasons Hotel Los Angeles offers 9,650 square feet (896 square metres) of sunlit function space. The Ballroom features dazzling Venetian crystal chandeliers, bevelled-glass mirrors and arched floor-to-ceiling French windows. Hosting up to 500 guests, the Ballroom is conveniently located on ground level – accessed by canopied garden promenade or through the main lobby.

For more intimate gatherings, there are 10 distinctive function rooms – nine of which open to expansive terraces or balconies for refreshing breaks. Two rooms feature a permanent boardroom table. Open-air events may take place under the palm trees in the adjoining Wetherly Garden.

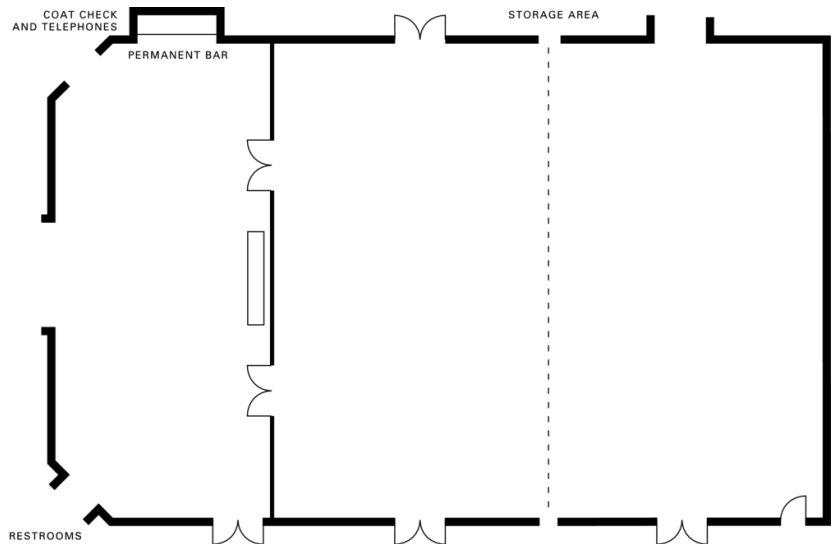
Almond/Linden/Palm Room



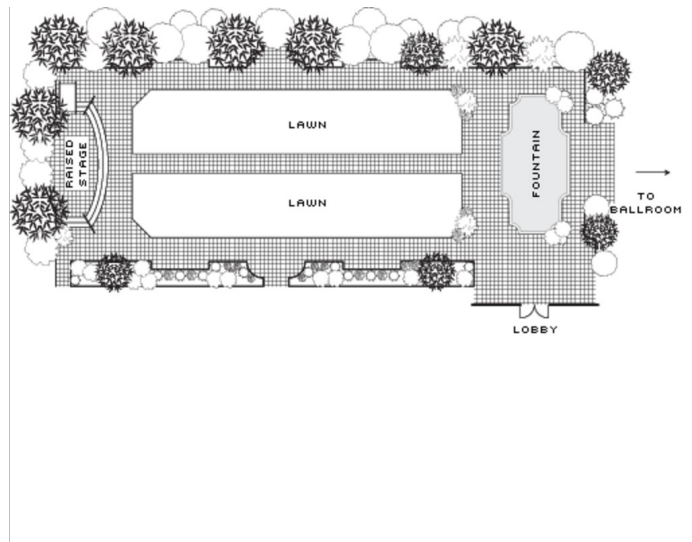
Wetherly Room



Ballroom



Wetherly Gardens



TECHNICAL ASSISTANCE

State-of-the-art audiovisual equipment includes:

- Theatrical and stage lighting
- Full concert sound systems
- Lecterns
- Computer data projection
- Digital audio capture and recording
- Built-in screens and drape kits
- Video cameras, video projectors, video players
- Stands, carts, easels, flipcharts, laser pointer, speaker timer
- Personal computers and peripherals
- On-site technician
- Wired and wireless Internet access

MUSIC AND ENTERTAINMENT

Our conference coordinators will be happy to assist with setting up any type of music or entertainment for your reception or dinner.

RECEIVING AND MAINTENANCE

The Hotel features a full-service shipping and receiving office. All packages should be sent to the attention of a group's name and its Conference Service Manager. They will be stored in a separate conference storage area. Limited space is available for the storage of large items. Please time shipping to the date of your arrival. For special arrangement for delivery of oversized packages or environmentally sensitive equipment, please contact the Receiving Department or your Conference Service Manager.

Post-conference shipping

Shipping of post-conference materials may be coordinated through your Conference Service Manager.

Maintenance

The Engineering Department is available for general assistance with lighting, room temperature control and minor repairs.

DESTINATION MANAGEMENT

Your Conference Services Manager can help accommodate your group's special requests. For detailed information, please contact the Hotel directly. In addition, we recommend the following destination management companies:

Bixel & Company
8721 Sunset Boulevard, Suite 101
Los Angeles, CA 90069
Telephone: 1 (310) 854-3828

PRA Destination Management
8500 Wilshire Boulevard, Suite 910
Beverly Hills, CA 90211
Telephone: 1 (310) 300-0100

BUSINESS SERVICES

Around the clock, Four Seasons can assist you with business, entertainment or travel arrangements through the Business Center and resourceful, multilingual Concierge.

- 24-hour business services
- Airline reservation service
- Audiovisual equipment
- Cellular telephones
- Computers
- Express check-in/check-out
- Japanese translation and interpretation service
- Secretarial service
- Translation and interpretation service
- Wired or wireless Internet access

SPOUSE PROGRAMMES

Four Seasons Hotel Los Angeles at Beverly Hills offers many activities to interest spouses of meeting participants:

- Art gallery tours, including Getty Museum, Los Angeles County Museum, Huntington Museum, Norton Simon Museum of Modern Art
- California wine and cooking class
- Burbank Studio tour
- VIP tour of Universal Studios
- Rodeo Drive shopping tour
- Picnic on the beach
- Fashion show and luncheon at Neiman Marcus
- Cruise to Catalina Island
- Visit to the Venice canals
- Black tie reception at historic Graystone Mansion – beautiful city views
- Journey to the Rich and Famous – visit the homes of the wealthy in Beverly Hills

CHILDRENS AND FAMILY PROGRAMMES

Our Concierge would be pleased to help arrange appropriate activities for visiting families.

Some ideas may include:

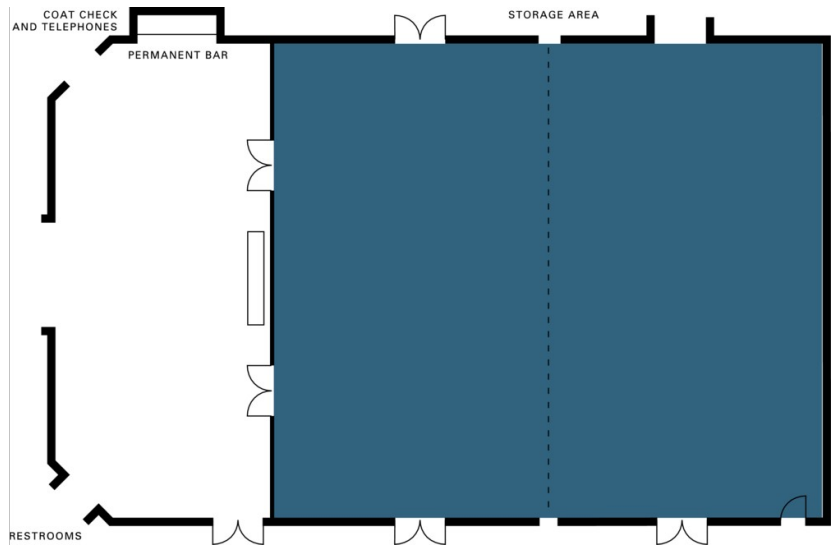
- Walt Disney Concert Hall
- California Science Center
- Disneyland

BALLROOM

Dimensions	60 x 70 ft 18.3 x 21.3 m
Size	4,200 sq.ft. 390 m ²
Height	15 ft 4.6 m

Capacities

Classroom	220
Hollow square	130
Theatre	350
Reception	500
Banquet Rounds	250

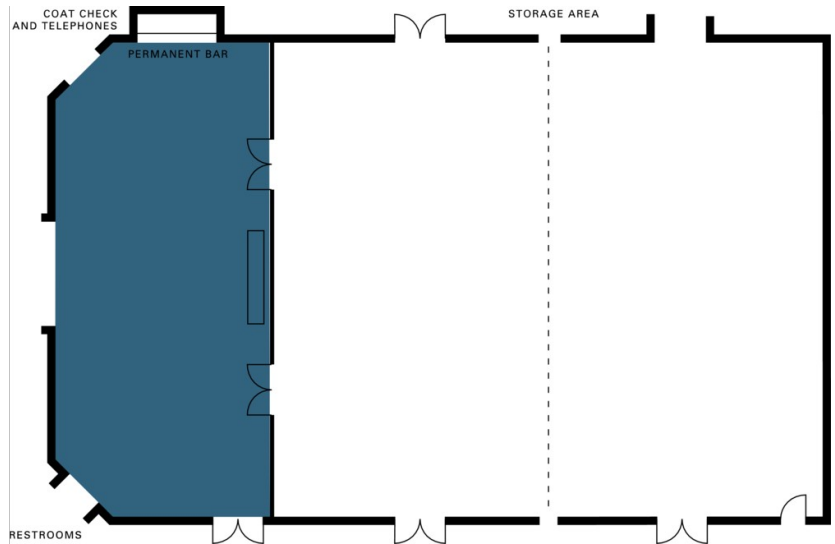


ORCHID ROOM

Dimensions	60 x 27 ft 18 x 8 m
Size	1,620 sq.ft. 150 m ²
Height	16 ft 4.8 m

Capacities

Classroom	80
Hollow square	50
U Shape	40
Theatre	100
Reception	125
Banquet Rounds	80

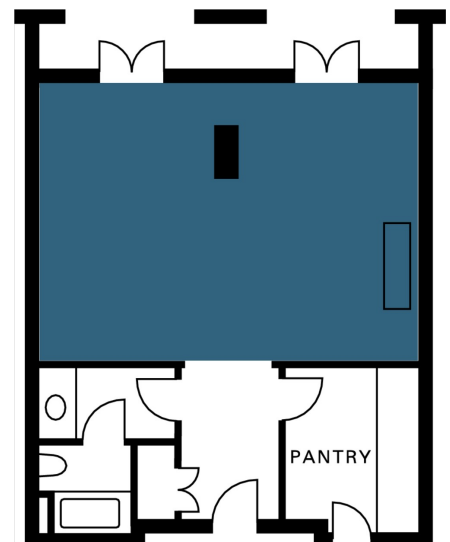


ALMOND ROOM

Dimensions	22 x 26 ft 6.7 x 7.9 m
Size	572 sq.ft. 53 m ²
Height	9.7 ft 3 m

Capacities

Classroom	20
U Shape	20
Theatre	36
Reception	40
Banquet Rounds	40
Boardroom	22

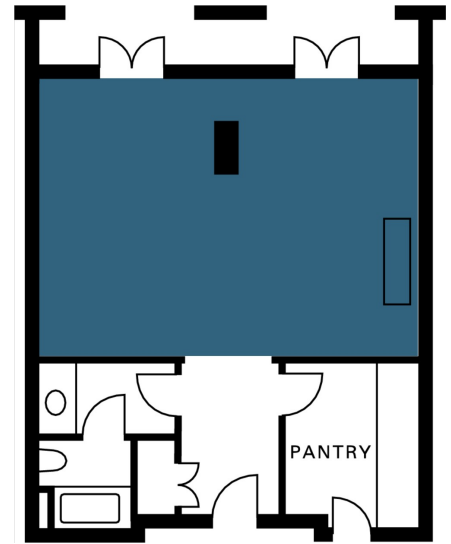


LINDEN ROOM

Dimensions	20 x 26 ft 6.1 x 7.9 m
Size	520 sq.ft. 48 m ²
Height	9.7 ft 3 m

Capacities

Classroom	15
U Shape	20
Theatre	30
Reception	40
Banquet Rounds	30
Boardroom	22

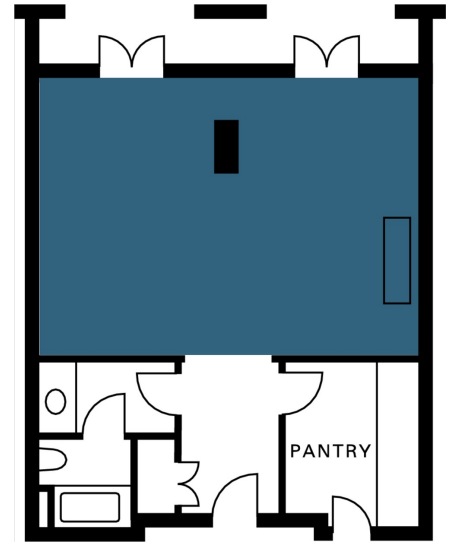


PALM ROOM

Dimensions	22 x 26 ft 6.7 x 7.9 m
Size	572 sq.ft. 53 m ²
Height	9.7 ft 3 m

Capacities

Classroom	20
U Shape	20
Theatre	36
Reception	60
Banquet Rounds	40
Boardroom	22

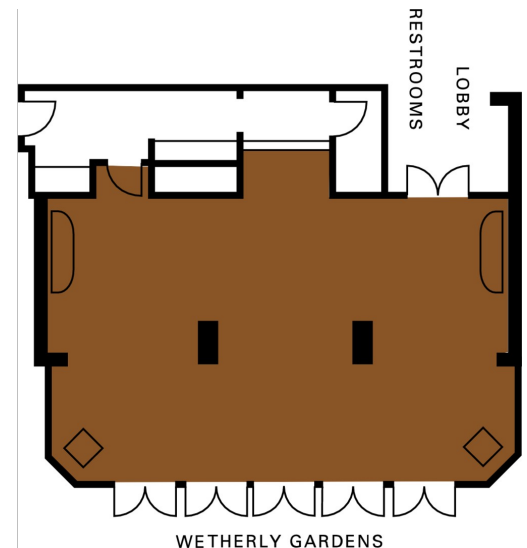


WETHERLY ROOM

Dimensions	25 x 40 ft 7.6 x 12.2 m
Size	1,000 sq.ft. 93 m ²
Height	9.7 ft 3 m

Capacities

Reception	80
Banquet Rounds	60
Boardroom	30

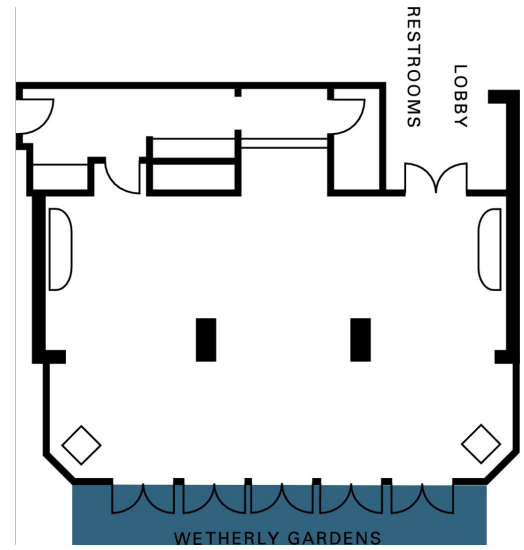


WETHERLY GARDENS

Dimensions	73 x 32 ft
	22.3 x 9.8 m
Size	2,336 sq.ft.
	218 m ²
Height	-
	-

Capacities

Theatre	250
Reception	200
Banquet Rounds	150



GUEST ROOMS, SUITES AND PRIVATE RESIDENCES OVERVIEW

Decorated in warm tones to echo the sunshine of Southern California, the Hotel's 285 spacious guest rooms and suites all feature French doors to a step-out balcony with views of the gardens, the Hollywood Hills, Los Angeles or Beverly Hills.

All Hotel accommodations feature a living area furnished with a writing desk, armchair, glass-top table, an armoire and a television and DVD player. All include NXTV with 50 television channels, as well as pay-per-view movies and video games, plus a Bose radio with iPod docking station. Three telephone lines are accompanied by wired or wireless Internet access. Lavish marble bathrooms include a make-up stool, telephone and TV/radio, plus premium bath amenities and grooming accessories.

Room Category	#	Beds	Size (sq ft)	View (m2)	View
- Deluxe Four Seasons Executive Suite	27	1 King	630	59	Los Angeles, Beverly Hills or the garden
- Four Seasons Executive Suite	50	1 King or 2 twin	630	59	Los Angeles, Beverly Hills, garden or Hotel's front drive
- Studio Suite	13	1 King	430	40	Hollywood Hills or Beverly Hills
- Premier Balcony Room	66	1 King	403	37	Hollywood Hills, Los Angeles or Beverly Hills
- Deluxe Balcony Room	37	1 King	380	35	Higher-floor Deluxe Balcony Rooms overlook Los Angeles or Beverly Hills; lower-floor rooms afford views of the lovely gardens
- Superior Balcony Room	46	1 King or 2 twin	380	35	Front entrance and Beverly Hills
- Accessible Superior Balcony Room with Roll-in Shower		1 King or 2 twin	380	35	Front entrance and Beverly Hills
- Accessible Superior Balcony Room		1 King or 2 twin	380	35	Front entrance and Beverly Hills
- Presidential Suite West	1	2 King	2,398	222	Beverly Hills and Bel Air hills
- Presidential Suite East		2 King	3,235	300	Hollywood hills and downtown Los Angeles skyline
- Royal Suite		2 King	1,809	168	Beverly Hills and Bel-Air hills
- Premier Suite		1 King	1,250	116	City or mountain views
- Grand Luxury Suite	7	1 King	750	70	Panoramic views of the Hollywood Hills and downtown Los Angeles
- Luxury Suite	1	1 King	880	82	Panoramic views
- One-Bedroom Suite	31	1 King	860	80	City or mountain views

Guest Room Overview

Four Seasons guest rooms offer luxe comfort with relaxing Los Angeles style. Spaciously proportioned Moderate Rooms present third-floor views of the Hotel's handsome front drive and gardens, while elevated Superior Rooms afford views extending over the city of Beverly Hills. Higher-floor Deluxe Rooms overlook Los Angeles or Beverly Hills, while lower-floor Deluxe Rooms view the gardens. Positioned on corners with wraparound balconies, larger Premier Rooms offer expansive views and additional seating in the living area.

Creating private areas for work or relaxation, Four Seasons Executive Suites feature French doors separating the sleeping and living quarters, with a balcony off the living room. Deluxe Four Seasons Executive Suites feature balconies off both the living room and bedroom.

Suites Overview

Four Seasons suites promote privacy and comfort by separating the living area from the bedroom with solid double doors. In One-Bedroom Suites, the living room and bedroom each have their own separate entrance and step-out balcony. The one-bedroom Luxury Suites offer corner locations on upper floors and feature wraparound balconies with views in two directions. Located on the penthouse 16th floor, the unique Grand Luxury Suite presents panoramic vistas from two step-out balconies.

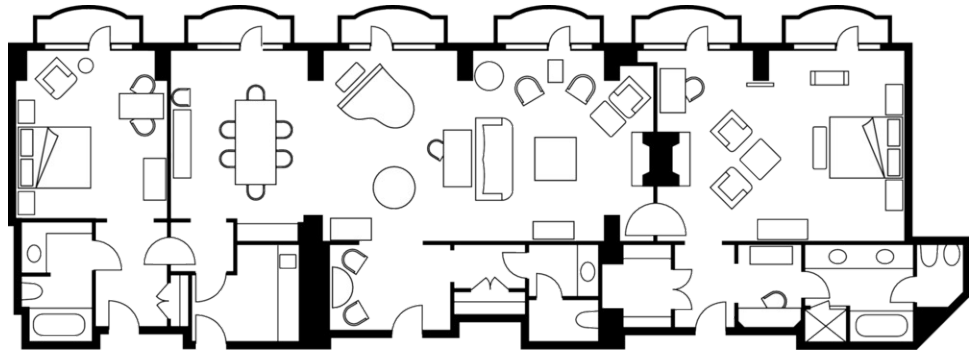
On higher floors, the uniquely decorated one- or two-bedroom Premier Suites offer a living room, a dining area for six with an adjoining butler's pantry, and three step-out balconies with panoramic city views. The spacious one-bedroom Grand Premier Suite is ideal for entertaining with its state-of-the-art Bulthaup kitchen, dining table for six and four walk-out balconies.

On the penthouse 16th floor, the two-bedroom Governor's Suite includes an elegant marble foyer, a living room with decorative fireplace, a dining room for eight with a wet bar and butler's pantry, and four step-out balconies. The two-bedroom Presidential Suite on the 16th floor provides palatial residential style with a black marble foyer leading to the spacious living room – regally furnished with chandeliers, a baby grand piano and decorative fireplace. The dining room seats six guests – discreetly served from an adjoining butler's pantry. This supreme suite features six walk-out balconies with the finest views of Los Angeles and the mountains.

PRESIDENTIAL SUITE WEST

Number 1
Beds Two king beds
Size 2,398 sq ft
222 m²

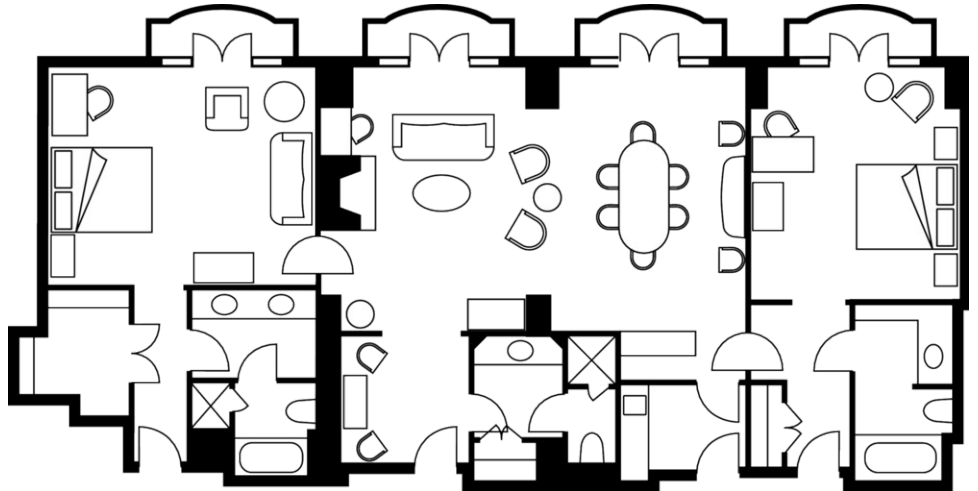
Location
16th floor
View
Beverly Hills and Bel Air hills



ROYAL SUITE

Number
Beds Two king beds
Size 1,809 sq ft
168 m²

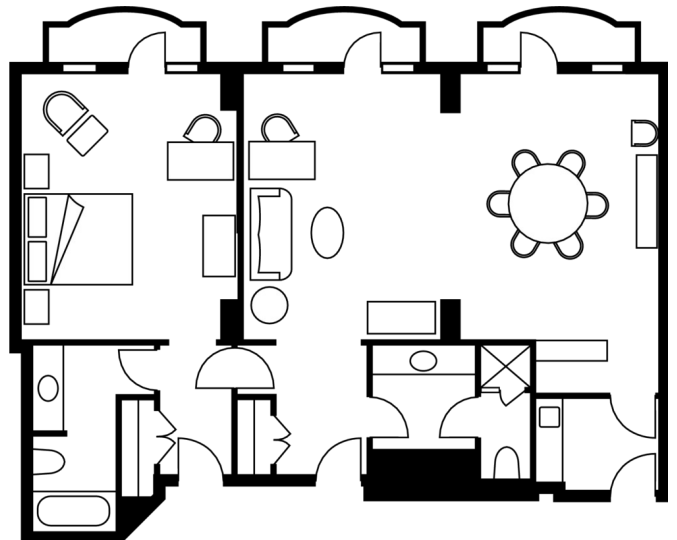
Location
16th floor
View
Beverly Hills and Bel-Air hills



PREMIER SUITE

Number
Beds King bed
Size 1,250 sq ft
116 m²

Location
12th, 14th and 15th floors
View
City or mountain views



GRAND LUXURY SUITE

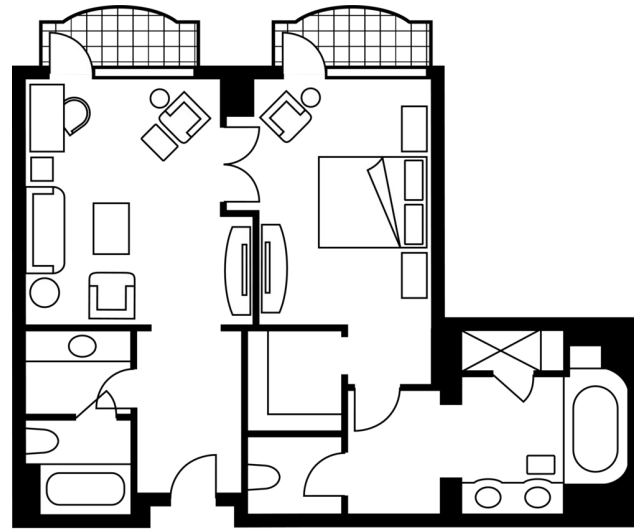
Number 7
Beds One king bed
Size 750 sq ft
70 m²

Location

16th floor

View

Panoramic views of the Hollywood Hills and downtown Los Angeles



LUXURY SUITE

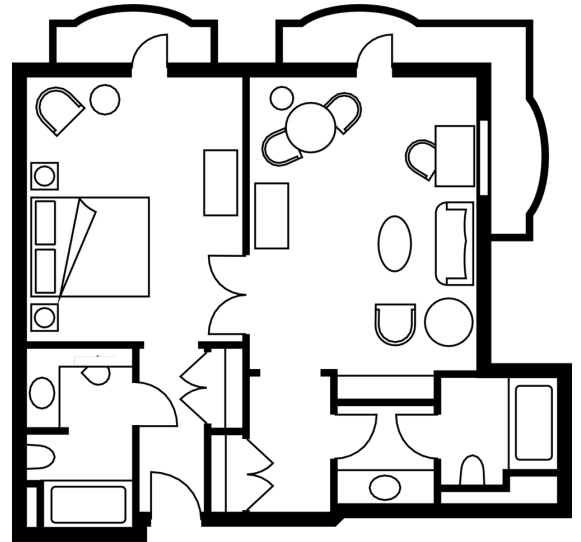
Number 1
Beds King bed
Size 880 sq ft
82 m²

Location

11th to 16th floors

View

Panoramic views



ONE-BEDROOM SUITE

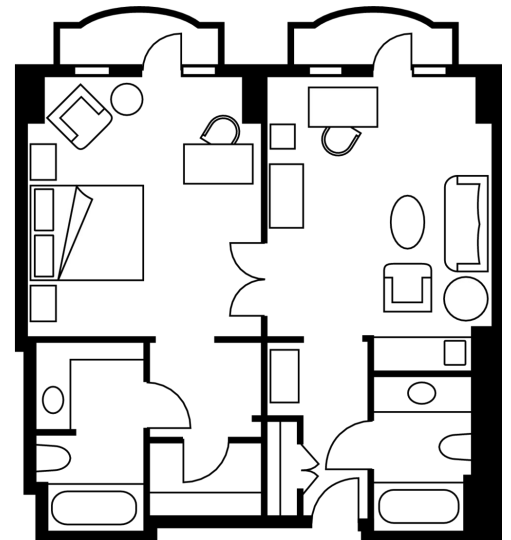
Number 31
Beds King bed
Size 860 sq ft
80 m²

Location

Throughout the Hotel

View

City or mountain views



AMENITIES

- All news cable network
- CD clock radio
- Complimentary newspaper with breakfast
- Down duvets
- Down pillows
- DVD player
- Fax machine on request
- Hair dryer
- Hypo-allergenic pillows on request
- In-room safe
- iPod docking station
- Iron and ironing board on request
- Laptop on request
- Multi-line telephone(s) with voicemail
- Printer on request
- Refrigerated private bar
- Thick terry bathrobes
- Twice-daily housekeeping service
- Wired or wireless Internet access

GUEST SERVICES

- 24-hour In-Room Dining
- 24-hour laundry/dry-cleaning/pressing
- 24-hour multilingual Concierge
- Airport transfers
- CD/DVD library
- Complimentary overnight shoeshine
- Limousine service
- Non-smoking rooms
- One-hour pressing
- Private dining room
- Services and amenities for younger guests
- Umbrellas
- Valet parking

VIP GIFTS AND WELCOME AMENITY

Special arrangements can be made for clients to purchase welcome amenities for their VIP guests.

DINING HOURS OF OPERATION

Cabana Restaurant

Sunday to Thursday 8:00 am - 5:00 pm

Friday and Saturday 8:00 am - 6:00 pm

Culina, Modern Italian

Breakfast

Monday to Saturday 6:30 am - 11:00 am

Brunch

Sunday 10:00 am - 2:00 pm

Lunch

Monday to Saturday 11:30 am - 2:30 pm

Dinner

Sunday to Wednesday 6:00 pm - 10:30 pm

Thursday to Saturday 6:00 pm - 11:00 pm

Windows Lounge

Sunday 5:00 pm - 12:30 am

Monday to Saturday 11:00 am - 1:30 am

Live music

Wednesday 6:00 pm - 8:00 pm

DJ entertainment

Friday and Saturday 10:00 pm - 1:00 am

In-Room Dining

Breakfast

Every day 6:00 am - 11:00 am

All-day dining

Every day 11:00 am - 11:00 pm

Dinner

Every day 6:00 pm - 10:30 pm

All-night dining

Every day 10:30 pm - 6:00 am

Snacks and hors d'oeuvres

Every day 4:00 pm - 11:00 pm

Children's Breakfast

Every day 6:00 am - 11:00 am

DINING

A favourite Beverly Hills destination for business or relaxation, Four Seasons Hotel Los Angeles offers settings for every occasion – from indoor-outdoor modern Italian cuisine in Culina, Modern Italian, to sophisticated cocktails at Windows Lounge, known as Hollywood's living room.

RESTAURANTS

Cabana Restaurant

Located adjacent to the pool on the fourth floor of Four Seasons Hotel Los Angeles, the newly renovated Cabana Restaurant offers casual all-day dining every day. A diverse menu offers themed choices for everyone, including indulgence sections, antioxidant choices, energy boosters and comfort food. A children's menu is available.

- Cuisine: Mediterranean-California
- Special features: Intimate casual dining adjacent to the pool
- Size: 1,436 sq ft / 133 m²
- Outdoor seating: 50

Culina, Modern Italian

Capturing the cosmopolitan ethos of Los Angeles, Culina, Modern Italian, recently named one of the nation's best new restaurants by *Esquire* magazine, features LA's only crudo bar, a spacious patio, two lounges, a contemporary dining room and two private rooms for entertaining. Culina – from the Latin word for “kitchen” – showcases the intersection of traditional and modern Italian cuisine with a menu guided by exceptional ingredients. Guests can enjoy Mediterranean raw seafood delicacies at the crudo bar, or settle in for a night of superior dining under spectacular glass chandeliers in the main room. Outside, a spacious patio features a unique fire-water fountain. Set amid a stunning indoor-outdoor design that blends simplicity with elegance, Culina, Modern Italian, is open for breakfast, lunch and dinner seven nights a week.

- Cuisine: Modern Italian

LOUNGES

Windows Lounge

The buzzing epicentre of Hollywood, newly renovated Windows Lounge features plush sofas, comfortable armchairs and an extended outdoor patio. The menu offers enticing appetisers from around the world, with specialty martinis and an extensive wine list. Guests can enjoy live music on Wednesday evenings and a special guest DJ on Friday and Saturday nights.

- Special features: Newly expanded outdoor patio with live music on Wednesday evenings and special guest DJ on Friday and Saturday nights
- Size: 2,025 sq ft / 188 m²
- Indoor seating: 100
- Outdoor seating: 70

RECREATION FACILITIES

Four Seasons Hotel Los Angeles combines a dynamic social scene with a serene, exclusive atmosphere – ideal for relaxing and recharging. The Hotel is famous for its elevated swimming pool and fitness centre, and the Spa specialises in Hollywood-style indulgence. Every stay is enriched with thoughtfully personalised care – ensuring an extraordinary Los Angeles experience.

SPA SERVICES

Escape to Los Angeles' most exclusive sanctuary for the senses, a spa worthy of Four Seasons. Take it all in: the luxurious atmosphere; the oh-so-indulgent services; the exquisite, one-of-a-kind treatments. It's the perfect retreat – spring, summer, autumn or winter. Relax, rejuvenate and return to indulgence.

- Size: 3,695 sq ft / 343 m²
- Number of treatment rooms: 8
- Products: Kerstin Florian, Leaf & Rusher, Ila

FITNESS FACILITIES

Situated on the fourth-floor pool terrace, the Fitness Centre at the luxury five-star Four Seasons Hotel Los Angeles offers an open-air venue to capitalise on LA's year-round sunshine. Depending on the weather, it can also be completely enclosed, with temperature controls and windows.

The Precor cardio equipment – including treadmills, elliptical machines, stationary bikes and climbers – is ergonomically designed and features entertainment systems equipped with iPod docking stations and flat-screen televisions offering 50 channels. Upon request, guests may borrow complimentary workout clothing and shoes.

- Size: 1,104 sq ft / 102.6 m²

POOL

Brand new and more glamorous than ever, our outdoor pool at the luxury five-star Four Seasons Hotel Los Angeles is set on a tropically landscaped terrace on the fourth floor, offering elevated city views. Six poolside cabanas are available for spa treatments or a sheltered respite, with refreshments offered from the adjoining Cabana Restaurant. Water in the pool is kept at a sultry 79–81°F (26–27°C).

GOLF

Lost Canyons Golf Club

Situated in the hills of Simi Valley these golf courses are two of the most beautiful courses in Los Angeles. The "Sky" course was selected by Golf Magazine as one of the "top 10 best new courses" in 2001, and the "Shadow" course was selected in 2002.

TENNIS

La Cienega Tennis Center

This center offers 16 well-lit professional tennis courts, pro-shop and lounge area, plus shower and dressing facilities. The center court features shaded seating for up to 300 spectators. Private and group instruction is available.

www.fourseasons.com/losangeles

Rooms	Dimensions		Size		Height		Classroom	Hollow square	U-shape	Theatre	Reception	Banquet rounds	Conference/ boardroom
	(ft)	(m)	(sq ft)	(m2)	(ft)	(m)							
- Ballroom	60 x 70	18.3 x 21.3	4,200	390	15	4.6	220	130	-	350	500	250	-
- Orchid Room	60 x 27	18 x 8	1,620	150	16	4.8	80	50	40	100	125	80	50
- Almond Room	22 x 26	6.7 x 7.9	572	53	9.7	3	20	-	20	36	40	40	22
- Linden Room	20 x 26	6.1 x 7.9	520	48	9.7	3	15	-	20	30	40	30	22
- Palm Room	22 x 26	6.7 x 7.9	572	53	9.7	3	20	-	20	36	60	40	22
- Wetherly Room	25 x 40	7.6 x 12.2	1,000	93	9.7	3	-	-	-	-	80	60	30
- Wetherly Gardens	73 x 32	22.3 x 9.8	2,336	218	-	-	-	-	-	250	200	150	-
- Beechwood Room	18 x 28	5.5 x 8.5	432	40	9.7	3	15	-	-	20	30	20	14
- Benedict Room	18 x 28	5.5 x 8.5	432	40	9.7	3	15	-	-	20	30	20	14
- Burton Room	41 x 20	12.5 x 6.1	820	76	9.7	3	38	38	36	75	60	50	36
- Coldwater Room	16 x 28	4.9 x 8.5	450	42	9.7	3	-	-	-	-	-	-	12
- Laurel Room	16 x 28	4.9 x 8.5	450	42	9.7	3	-	-	-	-	-	-	12