



## Quick Reference Guide

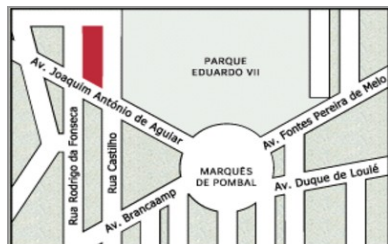
---

Last updated May 3, 2012 | For additional information please contact the hotel directly

---

Four Seasons Ritz Lisbon  
Rua Rodrigo da Fonseca, 88, Lisbon 1099-039, Portugal  
Tel 351.21.381.1400 | Fax 351.21.383.1783 | Res 351.21.381.1423

[www.fourseasons.com/lisbon](http://www.fourseasons.com/lisbon)



Rua Rodrigo da Fonseca, 88  
Lisbon 1099-039, Portugal  
Tel 351.21.381.1400  
Fax 351.21.383.1783  
Res 351.21.381.1423

#### AIRPORT

- Portela de Sacavem International  
Airport (LIS): 20 minutes (7  
kilometres/4 miles)

#### TABLE OF CONTENTS

- 2 *Introduction*
- 4 *Destination*
- 9 *Conference Facilities*
- 19 *Guest rooms, Suites and  
Private Residences*
- 23 *Dining*
- 24 *Recreational Facilities*
- 26 *Incentive Activities*
- 28 *Appendix: Conference Chart*

Rich in history yet alive with creative energy, Lisbon combines urban sophistication with the charm of a seaside resort. Rising atop one of the city's famed seven hills – overlooking Eduardo VII Park – Four Seasons has long been renowned as Lisbon's premier hotel.



One of the city's most prominent modern landmarks, Four Seasons Hotel Ritz Lisbon was built in 1959 by a group of Portuguese financiers with the intention of providing Lisbon with one of the best hotels in the world.

The 10-storey building's magnificent interiors feature 18th-century replica furnishings and a museum-calibre collection of contemporary Portuguese art. Marbled halls display over 600 specially designed creations, including handmade tapestries and carpets, paintings and original sculpture.

The 282 guest rooms and suites – most with terraces and all with marble bathrooms – offer vistas of Eduardo VII Park, St. George's Castle, the Old Town and the Tagus River. Meetings and special events take shape in 1,838 square metres (19,784 square feet) of sunlit function space. One of the city's most elegant destinations for dining, the acclaimed Varanda Restaurant serves Portuguese regional cuisine and the freshest seafood. For relaxation, there's a penthouse fitness centre and a Zen-inspired spa with indoor

swimming pool. Multilingual Four Seasons concierge staff are on call around the clock to help plan memorable adventures – whether discovering local fado music or visiting the mountain palaces of Sintra.

#### TRANSPORTATION

The Portela de Sacavem International Airport is 7 kilometres (4 miles) from the Hotel and is served by TAP Air Portugal, Air France, Alitalia, KLM, Lufthansa, Iberia, British Airways, Swiss, TWA, Continental Airlines, Delta, Varig, Aeroflot and other major carriers. Rental cars, taxi and limousine services and parking are available.

---

---

#### WEATHER CHART

---

Month	°C		°F	
	Highs/Lows	Highs/Lows	Highs/Lows	Highs/Lows
January	12	/ 8	54	/ 46
February	13	/ 8	55	/ 46
March	16	/ 10	61	/ 50
April	18	/ 11	64	/ 52
May	23	/ 13	73	/ 55
June	25	/ 18	77	/ 64
July	28	/ 22	82	/ 72
August	28	/ 22	82	/ 72
September	25	/ 18	77	/ 64
October	20	/ 13	68	/ 55
November	15	/ 10	59	/ 50
December	12	/ 8	54	/ 46

---

#### DESTINATION

The capital and largest city of Portugal, Lisbon is full of history and cultural traditions and abounds with magnificent castles, monuments, churches and museums. Bordered by one of Europe's widest rivers, the Tagus, the city spreads across the slopes of seven hills and down to the Atlantic Ocean.

The town's origins date back to approximately 1200 BC. Under Roman rule from 205 BC, it was led by a series of Germanic tribes from the fifth century, then taken over by the Moors in the eighth century. Portugal's first king was Afonso Henriques, who captured Lisbon in 1147. Over the centuries, the city grew to be a major political, economic and cultural centre – with a population today of approximately three million inhabitants.

Located in the city centre, Four Seasons is just a 15-minute walk to Lisbon's Old Town and within a half-hour drive of the sea.

#### WEATHER

With the mildest climate in Europe, Lisbon is blessed with a cool Atlantic breeze and long hours of sunshine. Dry summers transition into damper winters. The comfortable year-round climate is ideal for planning day trips, playing golf or lounging on the beach.

#### LOCAL ATTRACTIONS AND ACTIVITIES

At Four Seasons, you enjoy a unique vantage point from which to explore the sights, sounds and experiences around you. We hope the highlights of local attractions below help simplify your planning. Please let us know how else we can assist you.

##### *Within a 10-minute walk of the Hotel*

##### Gulbenkian Museum:

- A cultural "must-see," the museum includes Egyptian and ancient art, oriental works and vast collections of European paintings and sculptures, mainly from the 18th and 19th centuries.

##### Galeria Monumental:

- Lisbon's most high-profile and high-quality "establishment" gallery is also one of few to date from before the 1974 Revolution.

##### *Within a 15-minute walk of the Hotel*

##### Fundação Calouste Gulbenkian”:

- A magnificent park, with a pool, sculptures and an open-air amphitheatre, surrounding the buildings of the Fundação Gulbenkian. Please contact the Concierge to reserve tickets.

##### Historic Quarters of Chiado and Bairro Alto :

- While maintaining the old, sometimes melancholy, spirit of its history, Lisbon is also developing into one of Europe's hippest, most avant-garde European capitals. World-famous fashion designers have opened shops and ateliers in the stylish old shopping quarters of Chiado and Bairro Alto. Intellectuals, artists and hip urbanites flock to the area's wide variety of restaurants and clubs, where modern, futuristic design and décor blends perfectly with memories from the past. The area hums with excitement every

night of the week.

*Within a 20-minute walk of the Hotel*

Teatro Nacional D. Maria II:

- Located in Rossio, this 19th-century neoclassical building is one of the city's most important theatres. Atop the building stands a statue of Gil Vicente, the father of Portuguese theatre. Today, the theatre features a never-ending series of shows. Please contact the Concierge to reserve tickets.

Elevador Santa Justa:

- Opened in 1892, the 32-metre-high (103-foot) elevator connects the Baixa with the Largo do Carmo. With its neo-Gothic style, the Elevador Santa Justa is the finest of the elevators constructed by Mesnier de Ponsard, a disciple of Gustave Eiffel. At the top, a café terrace offers a fantastic view from Baixa to the Tagus river.

Historic Quarter of Alfama:

- The haunting melancholy evoked by Portuguese *fado* songs can be sensed physically when you walk through Alfama, with its tiny houses, cafés and shops. Strains of this beautiful music, bringing memories from bygone times, drift through the narrow streets of this old quarter of Lisbon, where every turn presents a photo opportunity. Stop at Santa Luzia Belvedere for great views of Alfama and the River Tagus.

*Within a 5-minute drive of the Hotel*

Tile Museum:

- A must-see for people interested in the history and design of ceramic tiles, this specialty museum houses a splendid collection of decorative tiles dating from the 15th century to the present. Included are Hispanic-Arab and Portuguese tiles, and collections of Spanish and Dutch painted tiles. Guided visits and tile-painting workshops are available.

Centro Português de Serigrafia (Portuguese Centre of Serigraphy):

- A large selection of serigraphy, a stencil method of printmaking, is displayed at the Centro Português de Serigrafia (Portuguese Centre of Serigraphy). Works are by some of Portugal's most important artists.

*Within a 10-minute drive of the Hotel*

Fundação Ricardo Espírito Santo:

- In 1953, banker and art collector Ricardo do Espírito Santo Silva donated Azurara Palace and his private collections to the Portuguese nation. Thus was born the Ricardo Espírito Santo Silva Foundation. This museum and school, dedicated to studying and protecting decorative arts, seeks to preserve traditional Portuguese crafts, educate the public's taste and improve the cultural level of the craftspeople.

Galeria 111 :

- Galeria 111 is Portugal's oldest art gallery. Founded by its director, artist Manuel de Brito, it opened in 1964.

*Within a 15-minute drive of the Hotel*

Castelo de São Jorge:

- Castelo de São Jorge (St. George's Castle) has its origins in the first century BC. However, it was not until the 12th century, when Lisbon was reconquered from the Moors, that King Afonso Henriques ordered the conversion of this hill-top fortification into a royal residence. It has recently been restored and refurbished. From its walls visitors can enjoy some of the most splendid views over the city.

Galeria Arte Periférica:

- This art gallery promotes Portuguese artists, showcasing a good selection of contemporary painting and design.

Sé Cathedral:

- Lisbon's cathedral, the Sé, was built by the first king of Portugal, Dom Afonso Henriques (1109–1185). Its interior takes the form of a latin cross with three naves. The cathedral is home to the 12th-century baptismal font where Saint Anthony was christened and also features a Gothic chapel with a nativity scene by sculptor Machado de Castro.

Palácio Marquês da Fronteira:

- This beautiful private estate is situated in a quiet rural setting on the northern edge of Monsanto Park. Built in 1640 in the Italian Renaissance style, it was a hunting pavilion for João de Mascarenhas, the first Marquês de Fronteira. The estate features an impressive collection of tiles and has remarkable gardens. Guided tours are available; they must be booked in advance.

*Within a 20-minute drive of the Hotel*

Palacio de Queluz:

- The palace was built in 1757 in the neo-classic style with baroque influences. Known as the Portuguese Versailles, it served as the summer residence of the Royal Family and later as the Royal Palace. Today, it is frequently used as a venue for concerts and ballet performances.

Mosteiro dos Jerónimos:

- Situated in the historical centre of Belém, the Mosteiro dos Jerónimos was built in the 16th century. It is an outstanding example of Manueline architecture, which is considered to be the most genuine Portuguese style and the most unique contribution to Renaissance Gothic style. Construction of the monastery began during the reign of Dom Manuel I, to celebrate the discovery of the sea route to India, and was completed during the reign of Dom João III (1502–1557). In 1983, UNESCO classified the monastery as a World Heritage site.

Padrão dos Descobrimentos:

- This tribute to the great Portuguese navigators towers 52 metres (171 feet) high. The monument symbolises a ship preparing to set sail, with Prince Henrique the Navigator in the most prominent position, followed by 32 historical characters associated with navigation and exploration.

Museu dos Coches:

- The museum, which opened in 1905, was once a horseriding school and now houses a unique collection of gilded and carved coaches, most formerly belonging to the Portuguese Royal family. Fantastic and sumptuous Portuguese, Italian, French, Austrian and Spanish coaches form part of this magnificent collection, considered to be one of the best and largest in the world.

Centro Cultural de Belém:

- Built in the 1990s as the headquarters of the Portuguese presidency of the European Community, this building is currently used as a cultural centre. Dance, concerts, exhibitions, theatre, opera and reading rooms all make the centre a lively place, especially on weekends. Exhibitions are open daily 11:00 am to 8:00 pm, and the Praça de Império is open daily 10:00 am to 7:00 pm.

Torre de Belém:

- The Tower of Belém was built in an effort to defend the estuary of the river Tagus. King Dom João II (1455–1495) had wanted to ban hostile ships from the river, but it was his successor, Dom Manuel I (1469–1521), who actually built the tower. It was designed by architect and sculptor Francisco Arruda, with notable traces of Moorish influence. It is a UNESCO World Heritage Site.

Casino de Lisboa:

- The newest casino in Portugal is located in the Parque das Nações. It has more than 800 slot machines, 22 gaming tables, 4 bars, 3 restaurants and a show venue that seats over 600.

*Within a 30-minute drive of the Hotel*

Cascais:

- This tiny fishing village attracted artists and writers to its little cottages in the 1930s. It was once known as a royal village because it enjoyed the patronage of Portugal's royal family. Today it is a stylish summer resort, featuring numerous restaurants, bars and discotheques. The village is also the site of the Castro Guimarães Museum and Sea Museum; the 18th-century churches of Nossa Senhora da Assunção and Nossa Senhora dos Navegantes; the chapels of Nossa Senhora da Guia (15th century) and São Sebastião (16th and 17th centuries); and a 17th-century fortress. Just a few minutes away lies Guincho beach – a great place for those who enjoy surfing and windsurfing.

Sintra:

- Sintra has always attracted kings and aristocrats, who built fairy-tale palaces in the area. At least five major palaces and convents are tucked amid the lush vegetation and soaring mountains. A World Heritage site since 1995. In the town centre stands the National Palace, built in the 14th century and notable for its Gothic influences. King Manuel I carried out renovations in the 16th century, this time with Moorish influences. Also notable are a 13th-century Moorish castle and Pena Palace. The latter was built in the 19th century for the husband of Queen Maria II. This unique building incorporates architectural styles from around the world.

Palacio da Pena:

- Sitting atop the Sintra Mountains is the Palacio da Pena, built in 1839 by prince

consort Ferdinand of Saxe-Coburg. It mixes Manueline style with Muslim and Indian orientalism, Renaissance and Mudéjar styles.

Casino de Estoril:

- Historically, Estoril was a place of refuge for several kings. It has since been transformed into a distinctive and elegant location that has become known as the Portuguese Riviera. The town has a vast number of hotels, beaches, golf courses and the regional casino, which is one of the best in Europe. Opened in the late 1960s, this is Europe's largest casino, featuring casino shows, an art gallery, an exhibition hall, piano bars and restaurants.

Museu de Arte Moderna (Berardo Collection):

- The Berardo Collection includes works representing the whole range of 20th-century art. The collection emphasises the period's quality and creativity, without limiting itself to specific movements, techniques or nationalities.

*Within a 45-minute drive of the Hotel*

The Blue Coast Excursion:

- On the south side of the River Tagus, a still unspoilt world of natural wonders can be discovered on the nature reserve of the Arrábida hills. A convent or fortress here and there completes the landscape.

*Within a 1-hour drive of the Hotel*

Silver Coast Excursion :

- Visit the charming villages of Mafra, Óbidos, Nazaré and Alcoçaba, in the comfort of your limousine. This day-long trip will take you through convents, palaces and typical villages in the countryside just north of Lisbon.

*Within a 1.5-hour drive of the Hotel*

Alentejo:

- Reguengos de Monsaraz Alentejo is a land of wide-open spaces, vast plains, cork trees, golden wheat fields, olive groves, vineyards and brilliant sunflowers. The endless plains and serene surroundings are still unspoilt by tourism – and the beautiful landscape is adorned with picturesque villages and towns. Enjoy this charming region from the comfort of your limousine, on a day-long trip that includes the villages of Arraiolos, Évora, Estremoz and Vila Viçosa.

CONFERENCE FACILITIES OVERVIEW

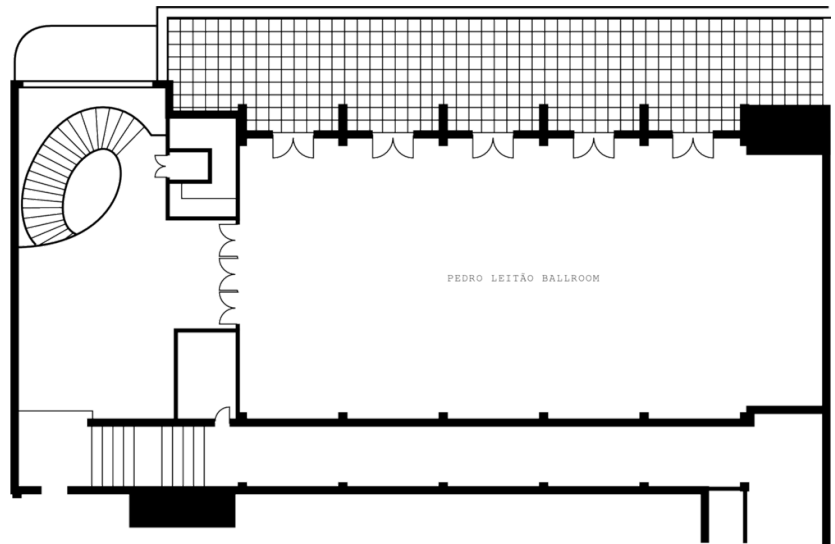
Total Space	1,838 m <sup>2</sup> 19,784 sq.ft.
Largest Ballroom	456 m <sup>2</sup> 4,908 sq.ft.
Meet and Feed (max. capacity)	320
Breakouts	16
Banquet (max. capacity)	320
Outdoor Banquet (max. capacity)	-
Private Dining (max. capacity)	80

CONFERENCE FACILITIES

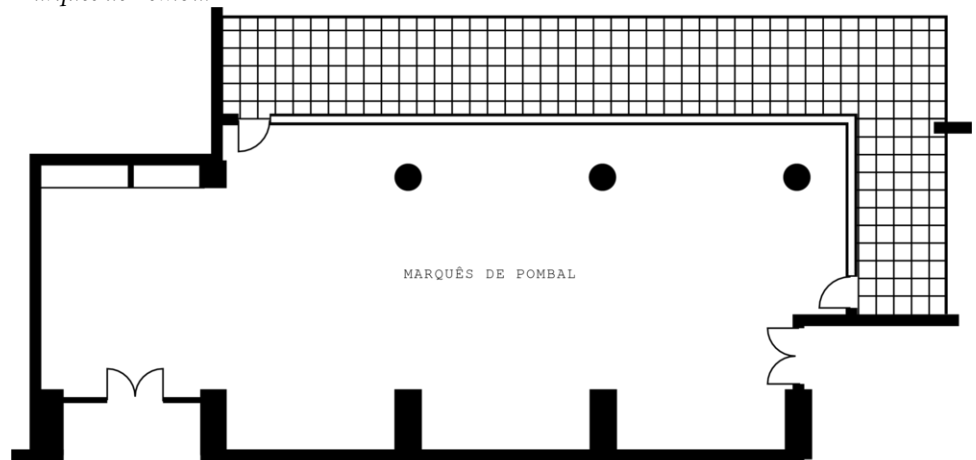
Four Seasons offers 1,838 square metres (19,784 square feet) of Lisbon's finest meeting and function space, including 15 elegant rooms – many bathed in natural light and many opening to spacious outdoor terraces. In the majestic Pedro Leitão Ballroom, gala events for up to 500 guests unfold beneath crystal chandeliers. Entered through the private Mezzanine Gallery or by a formal street entrance, this lavish room features soaring windows and a private terrace looking onto the gardens of Eduardo VII Park.

Also ideal for larger gatherings are the two adjoining Fernando Pessoa rooms. Windows run the entire length and lead to a large garden-like terrace with an extraordinary view of the park. A variety of smaller spaces are well suited for board meetings, private dinners or video conferences. For complete efficiency, the Business Centre is ready to fulfill any professional task.

*Pedro Leitao Ballroom*



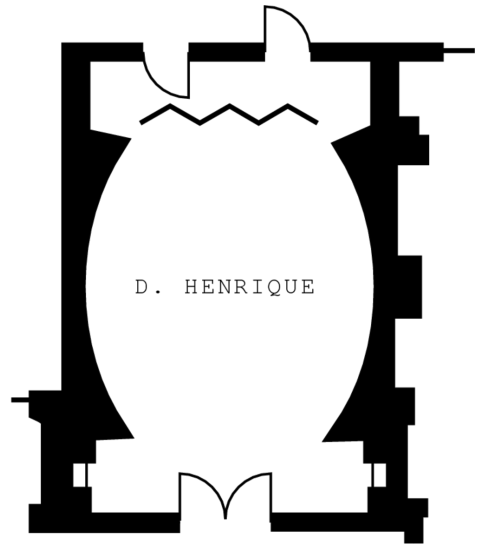
*Marques de Pombal*



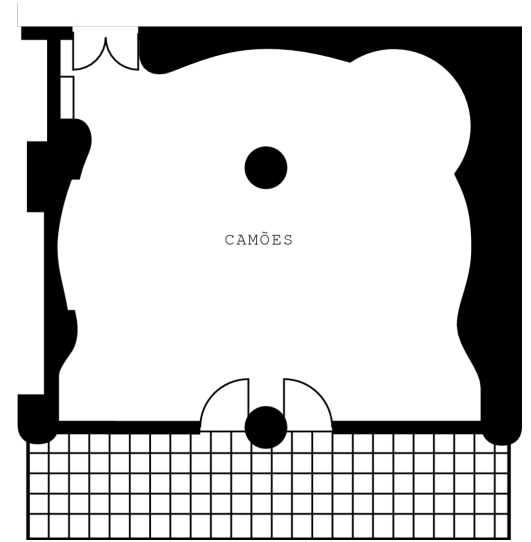
*Vasco da Gama*



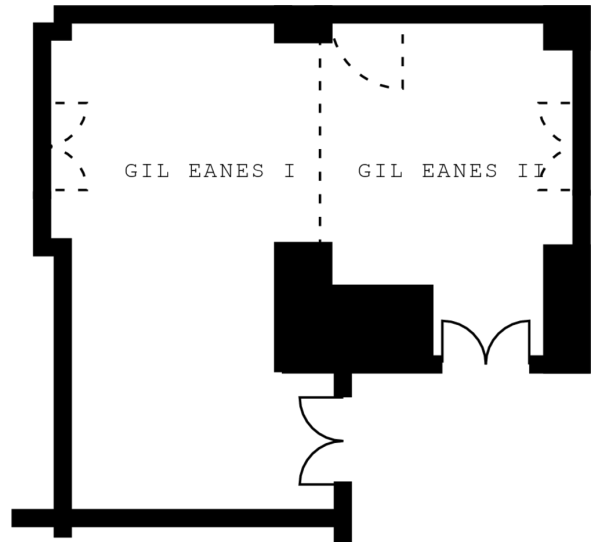
*D. Henrique*



*Camoes*



*Gil Eanes I and II*



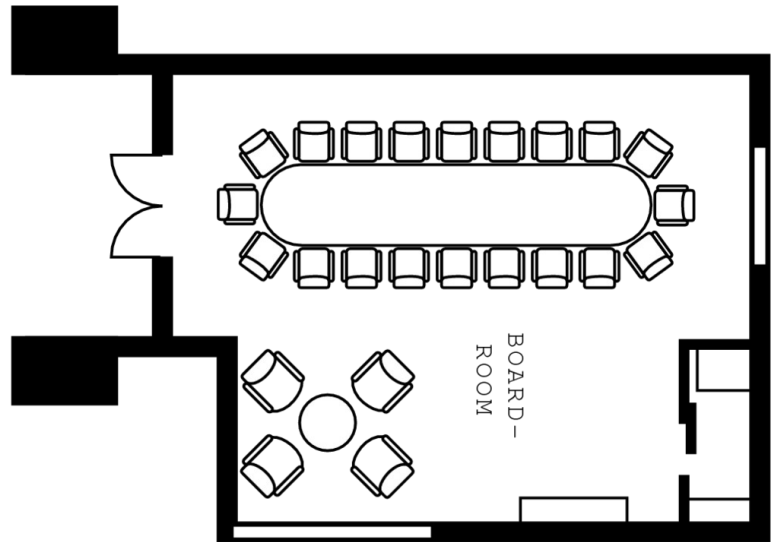
*Afonso de Albuquerque*



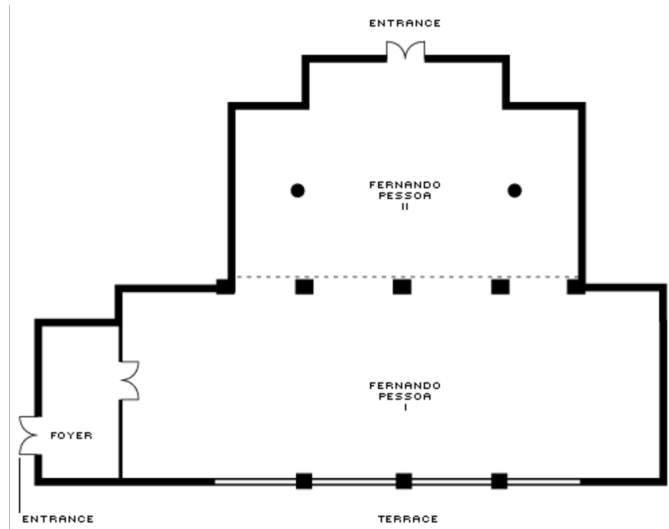
*Pedro Alvares Cabral*



*Boardroom*



*Fernando Pessoa I and II*



**TECHNICAL ASSISTANCE**

The Hotel continually updates its presentation equipment and keeps pace with changing technology. The following are available: on-site technician, overhead projectors, LCD colour display panel, slide projectors, video cameras, video projectors, video players, microphones, mixers, amplifiers, audio cassette players, CD players, stands, easels and flipcharts.

**MUSIC AND ENTERTAINMENT**

The Hotel's on-site Conference Services Manager will be happy to assist with setting up any type of music or entertainment.

**RECEIVING AND MAINTENANCE**

The Hotel features a full-service shipping and receiving office. All packages should be sent to the Conference Services Manager. They will be stored in a separate conference

storage area. Limited space is available for the storage of large items. Please time shipping to the date of your arrival. Special arrangements made with the Conference Services Manager are required for delivery of oversized packages and post-conference shipping.

The Engineering Department is available for general assistance with lighting, room temperature control and minor repairs.

#### BUSINESS SERVICES

Around the clock, Four Seasons can assist you with business, entertainment or travel arrangements through the Business Center and resourceful, multilingual Concierge.

- 24-hour business services
- Airline reservation service
- Audiovisual equipment
- Cellular telephones
- Computers
- Secretarial service
- Translation and interpretation service

#### SPOUSE PROGRAMMES

The Hotel offers many activities to interest spouses of meeting participants:

- City tour of various historical sites
- Shopping tours
- Cooking class/demonstration
- Scenic cruises of the Tagus River
- Helicopter tours

#### CHILDRENS AND FAMILY PROGRAMMES

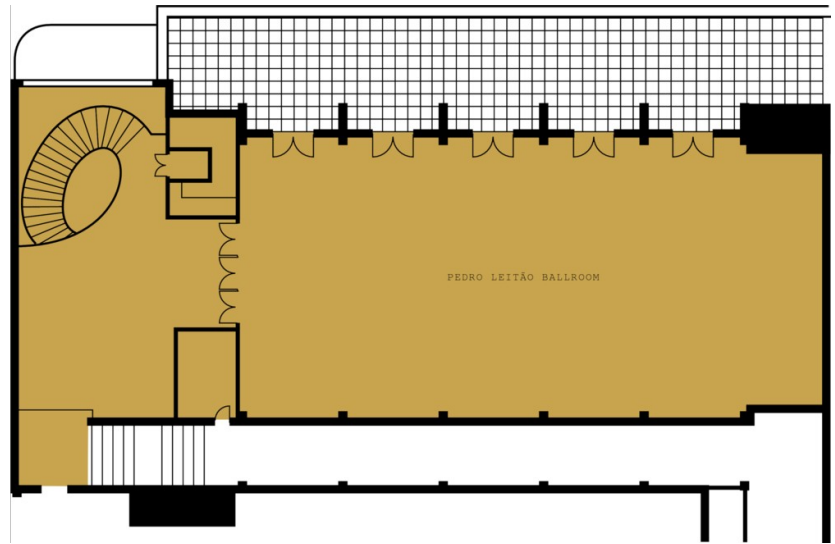
We would be pleased to help arrange appropriate activities for visiting families.

**PEDRO LEITÃO BALLROOM**

Dimensions	30.2 x 15.1 m 99.1 x 49.5 ft
Size	456 m <sup>2</sup> 4,908 sq.ft.
Height	4.2 – 5.5 m 13.8 – 18 ft

*Capacities*

Classroom	320
Hollow square	180
U Shape	150
Theatre	500
Reception	500
Banquet Rounds	400



**VASCO DA GAMA**

Dimensions	14.8 x 6.3 m 48.4 x 20.7 ft
Size	93 m <sup>2</sup> 1,001 sq.ft.
Height	3.8 m 12.5 ft

*Capacities*

Classroom	50
Hollow square	45
U Shape	40
Theatre	90
Reception	90
Banquet Rounds	60

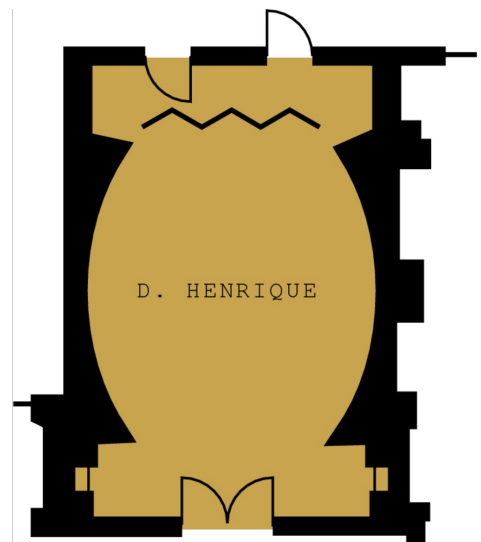


**D. HENRIQUE**

Dimensions	8.2 x 6.2 m 27 x 20.3 ft
Size	51 m <sup>2</sup> 549 sq.ft.
Height	3.4 m 11.2 ft

*Capacities*

Classroom	20
Hollow square	20
U Shape	15
Theatre	35
Reception	30
Banquet Rounds	30

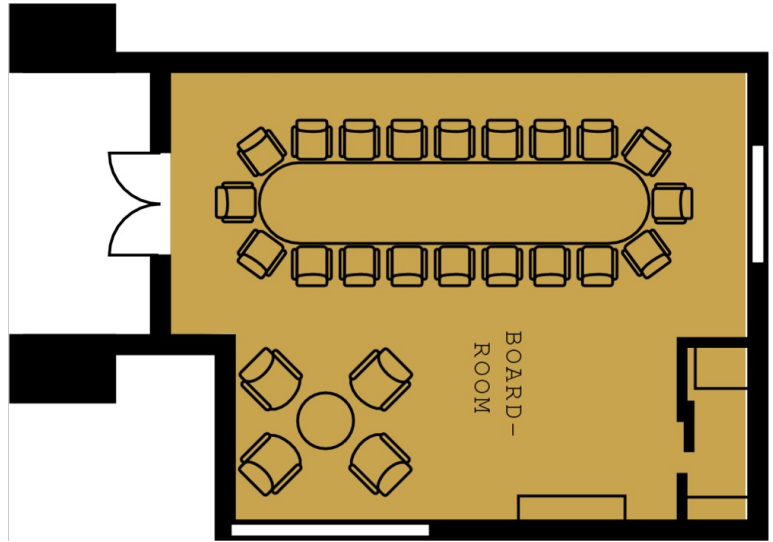


**BOARDROOM**

Dimensions 9.2 x 7.1 m  
30.2 x 23.3 ft  
Size 65 m<sup>2</sup>  
700 sq.ft.  
Height 3.2 m  
10.5 ft

*Capacities*

Boardroom 20

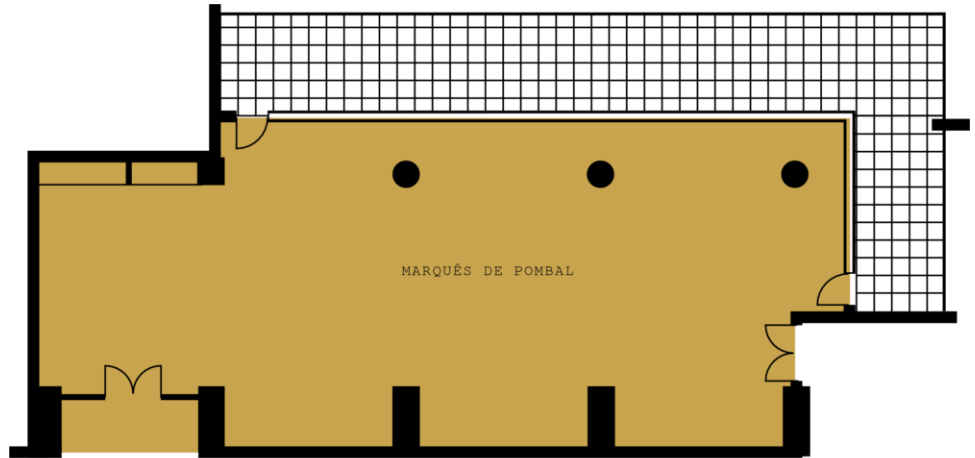


**MARQUÊS DE POMBAL**

Dimensions 20.9 x 8.8 m  
68.6 x 28.9 ft  
Size 184 m<sup>2</sup>  
1,981 sq.ft.  
Height 3.1 m  
10.2 ft

*Capacities*

Classroom 75  
Hollow square 65  
U Shape 55  
Theatre 120  
Reception 120  
Banquet Rounds 80

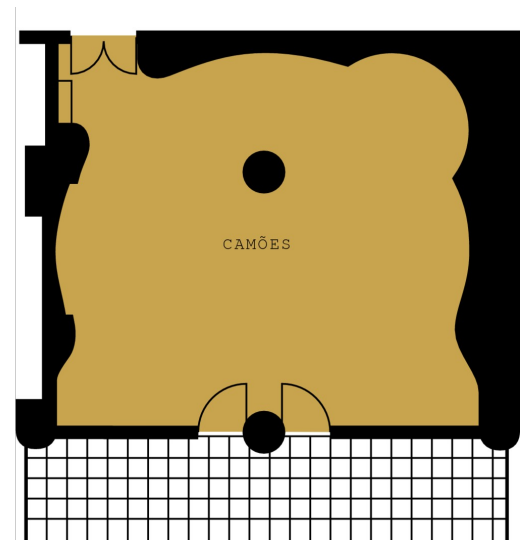


**CAMÕES**

Dimensions 9.5 x 8.4 m  
31.2 x 27.6 ft  
Size 80 m<sup>2</sup>  
861 sq.ft.  
Height 2.9 m  
9.5 ft

*Capacities*

Classroom 35  
Hollow square 25  
U Shape 20  
Theatre 50  
Reception 50  
Banquet Rounds 40



**GIL EANES I**

Dimensions	10.1 x 5.5 m 33.1 x 18 ft
Size	56 m <sup>2</sup> 603 sq.ft.
Height	2.9 m 9.5 ft

*Capacities*

Classroom	30
Hollow square	25
U Shape	20
Theatre	50
Reception	50
Banquet Rounds	40



**GIL EANES II**

Dimensions	7.1 x 4.9 m 23.3 x 16.1 ft
Size	35 m <sup>2</sup> 377 sq.ft.
Height	2.8 m 9.2 ft

*Capacities*

Classroom	12
Hollow square	12
U Shape	10
Theatre	20
Reception	20
Banquet Rounds	20



**AFONSO DE ALBUQUERQUE**

Dimensions	7.8 x 5 m 25.6 x 16.4 ft
Size	39 m <sup>2</sup> 420 sq.ft.
Height	2.9 m 9.5 ft

*Capacities*

Classroom	15
Hollow square	18
U Shape	15
Theatre	30
Reception	30
Banquet Rounds	20

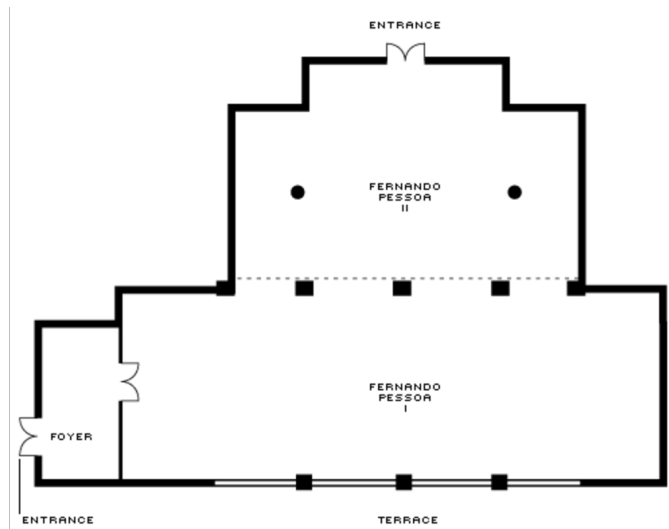


FERNANDO PESSOA I

Dimensions	28.4 x 9.3 m
	93.2 x 30.5 ft
Size	290 m <sup>2</sup>
	3,121 sq.ft.
Height	3.3 m
	10.8 ft

Capacities

Classroom	130
Hollow square	90
U Shape	81
Theatre	250
Reception	300
Banquet Rounds	230

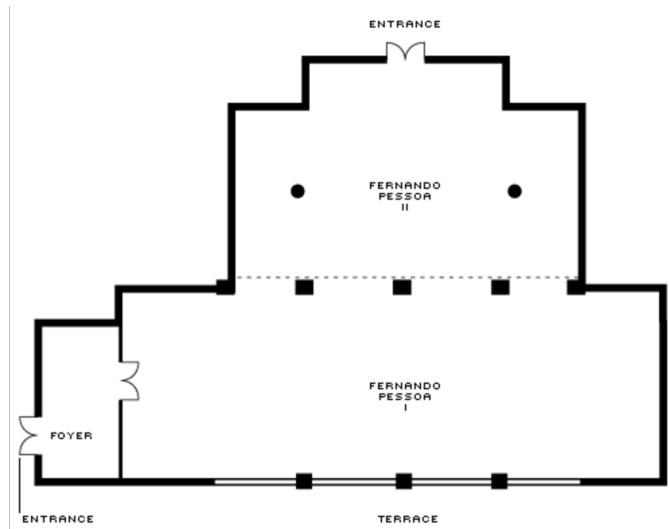


FERNANDO PESSOA II

Dimensions	18.1 x 11.2 m
	59.4 x 36.8 ft
Size	154 m <sup>2</sup>
	1,658 sq.ft.
Height	3.3 m
	10.8 ft

Capacities

Classroom	50
Hollow square	36
U Shape	27
Theatre	100
Reception	150
Banquet Rounds	120
Boardroom	36



### GUEST ROOMS, SUITES AND PRIVATE RESIDENCES OVERVIEW

Bright and spacious Four Seasons accommodations – the largest in Lisbon – welcome guests to Portugal with an ambience of residential comfort. Of the 282 guest rooms and suites, 272 open to private terraces. Views from the 10-storey building encompass the five-star Hotel's gardens, Eduardo VII Park, St. George's Castle, the Old Town, the Tagus River and the 25th of April Bridge – a replica of San Francisco's Golden Gate Bridge.

Contemporary styling offers a variety of colour schemes. For entertainment, there are plasma/LCD televisions with DVD/CD players. Business conveniences include a working desk, high-speed Internet access and dual-line telephones. Lavish marble bathrooms each offer twin basins, a separate bath and glass-enclosed shower and a private WC with bidet. Plush cotton towels are warmed on heated racks, and fine toiletries are replenished by twice-daily housekeeping.

<i>Room Category</i>	<i>#</i>	<i>Beds</i>	<i>Size (m<sup>2</sup>)</i>	<i>Size (sq ft)</i>	<i>View</i>
- Four Seasons Junior Suite	20	1 King or 2 twin	74	791	City of Lisbon
- Deluxe Room	157	1 King, 1 queen, or 2 twin	49	527	Old town, Eduardo VII park or the Hotel gardens
- Superior Room	43	1 King, 1 queen or 2 twin	42	452	City view
- Moderate Room	41	1 King or queen	42	452	Courtyard entrance with city view
- Presidential Suite	1	1 King	247	2,655	Tagus River, Eduardo VII Park, St. George's Castle and the city of Lisbon.
- Royal Suite	1	1 King	175	1,890	City views, including Tagus River, Eduardo VII Park and St. George's Castle.
- Residency Suite	1	1 King and 1 queen	115	1,242	City and Eduardo VII Park
- Foundation One-Bedroom Suite	2	2 twin	115	1,242	Eduardo VII Park and Marques de Pombal Square
- Imperial One-Bedroom Suite	9	1 King (extra-long)	114	1,224	Eduardo VII Park and courtyard, or Marques de Pombal monument, Tagus River, St. George's Castle and the city.
- Grand One-Bedroom Suite	5	1 King or 1 queen	115	1,242	Eduardo VII Park and Marques de Pombal Square
- Central One-Bedroom Suite	5	1 King or queen	115	1,242	Eduardo VII Park

#### *Guest Room Overview*

Four Seasons guest rooms inspire instant relaxation – giving a sense of confidence, comfort and peace of mind. Conveniently located on the lower floors, Moderate Rooms feature private terraces overlooking the courtyard entrance and the city. Superior Rooms offer city views, while Deluxe Rooms overlook the Old Town, Eduardo VII Park or the Hotel gardens. Remarkably spacious Four Seasons Junior Suites feature city views and include a large furnished alcove off the bedroom, as well as a dressing area with two walk-in closets.

### *Suites Overview*

Giving extra space for meeting, entertaining or relaxing, the Hotel's collection of suites all feature spacious living areas separate from the master bedroom. All may be configured as two-bedroom suites with the addition of a connecting room.

Central One-Bedroom Suites are on lower floors and overlook Eduardo VII Park, while Imperial One-Bedroom Suites offer impressive southwest-corner views and a dining table for four guests. Located on the sixth and eighth floors, spacious Foundation Suites showcase magnificent frescos and an ambience reflective of the late 18th century, including twin canopy beds. On the sixth to tenth floors, the large and elegant Grand One-Bedroom Suites feature replicas of furnishings owned by Portuguese royalty, and include private terraces off both the living room and the bedroom.

The tenth-floor Presidential Suite is classically furnished, featuring a majestic marble entrance leading to an oversized living room with an executive working desk. French doors seclude the private dining room, which seats eight guests and is served by a separate kitchenette.

**FOUR SEASONS JUNIOR SUITE**

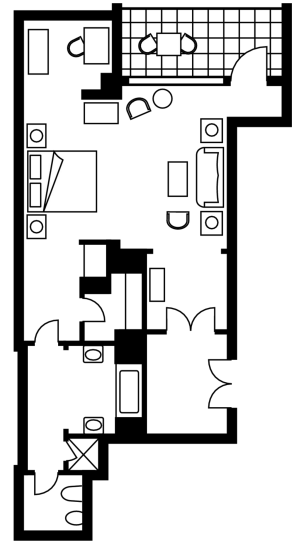
Number 20  
Beds King or two twin beds  
Size 74 m<sup>2</sup>  
791 sq ft

*Location*

First to tenth floors

*View*

City of Lisbon



**DELUXE ROOM**

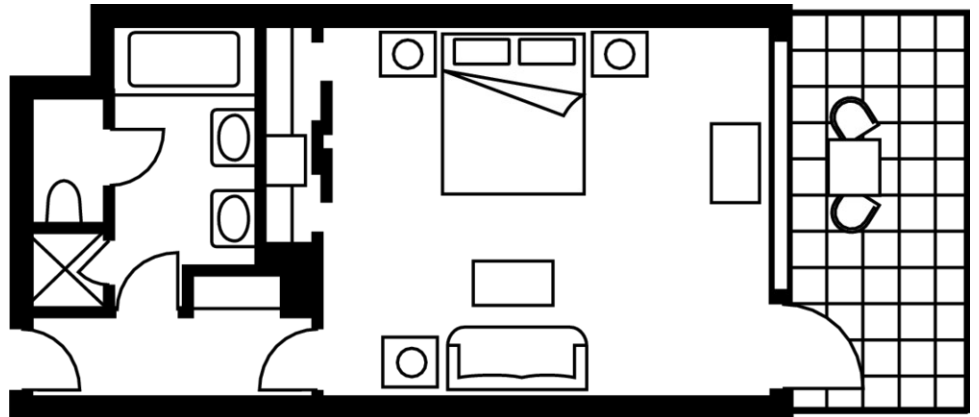
Number 157  
Beds One king, one queen, or  
two twin beds  
Size 49 m<sup>2</sup>  
527 sq ft

*Location*

First to tenth floors

*View*

Old town, Eduardo VII park or the  
Hotel gardens



#### AMENITIES

- All news cable network
- CD player
- Clock radio
- Complimentary newspaper with breakfast
- Down pillows
- DVD player
- Fax machine on request
- Hair dryer
- Hypo-allergenic pillows on request
- In-room safe
- Iron and ironing board on request
- Multi-line telephone(s) with voicemail
- Plasma/LCD screen television
- Refrigerated private bar
- Thick terry bathrobes
- Twice-daily housekeeping service
- Wired or wireless Internet access

#### GUEST SERVICES

- 24-hour In-Room Dining
- 24-hour laundry/dry-cleaning/pressing
- 24-hour multilingual Concierge
- Complimentary overnight shoeshine
- Non-smoking rooms
- One-hour pressing
- Restaurant
- Self-parking
- Services and amenities for younger guests
- Umbrellas
- Valet parking

#### VIP GIFTS AND WELCOME AMENITY

Special arrangements can be made for clients to purchase welcome amenities for their VIP guests, including port wine, bottled water, a basket of fruit or an arrangement of fresh flowers.

---

---

DINING HOURS OF OPERATION

---

*Varanda Restaurant*

Breakfast	6:30 am - 10:30 am
Lunch	12:30 pm - 3:00 pm
Dinner	7:30 pm - 10:30 pm

---

*Almada Negreiros Lounge*

Every day	9:30 am - 1:00 am
Afternoon tea	4:00 pm - 6:00 pm

---

*Ritz Bar*

Every day	9:30 am - 1:00 am
-----------	-------------------

---

*In-Room Dining*

Breakfast	6:00 am - 11:30 am
All-day menu	11:00 am - 11:00 pm
Organic	11:00 am - 9:30 pm

---

DINING

The city's most sophisticated choice for dining, Four Seasons Hotel Ritz Lisbon delights guests with award-winning cuisine, an extensive wine cellar and a glittering terrace above the city. Varanda Restaurant's menus feature Portuguese regional specialities and a selection of the freshest seafood, while the Ritz Bar offers the opportunity to sip the rarest port while nestled in sumptuous comfort.

RESTAURANTS

*Varanda Restaurant*

Overlooking Eduardo VII Park and the Hotel's terraces, Varanda Restaurant is favoured for business lunches and dinners by the city's most sophisticated residents and discerning executives.

- Indoor seating: 80

LOUNGES

*Almada Negreiros Lounge*

Enjoy afternoon tea in the spacious Almada Negreiros Lounge, overlooking the Eduardo VII Park.

*Ritz Bar*

This restaurant is slightly avant-garde, with dramatic red and black décor. There is live piano music in the evenings from Monday to Saturday. A children's menu is available for younger diners.

- Indoor seating: 59

## RECREATION FACILITIES

Four Seasons helps bestow a sense of complete well-being. For invigorating workouts, the penthouse fitness centre motivates with panoramic views of the city. For relaxation, the spa offers sleek Zen design and soothing minimalist elegance. Options for outdoor recreation include a helicopter ride over the city, a day spent sailing, a golf tournament on one of seven nearby courses or a night at the casino in Estoril.

### SPA SERVICES

Four Seasons Hotel Ritz Lisbon invites you on a journey of relaxation, self-discovery and pampering during your vacation or weekend getaway. Designed to inspire a feeling of serene exoticism, the multi-sensory Spa soothes the senses with calming, Buddhist-inspired music; Zen design in marble and rich oak; sensuous art pieces; and luxe furnishings, from Italian poolside loungers to ergonomically designed oversized beds.

With views overlooking the Hotel garden and Eduardo VII Park, the Spa offers a transporting experience with every treatment. Guests feel renewed – refreshed by the heightened sense of body and mind the Spa offers, in everything from pre-treatment eucalyptus-infused steams to lime foot rituals and customised reading lights in the relaxation room. After your treatment, enjoy the tantalising menu at the poolside spa café, where you can contemplate life's luxuries while enjoying garden views through floor-to-ceiling windows.

- Size: 1,500 m<sup>2</sup> / 16,146 sq ft
- Number of treatment rooms: 4

### FITNESS FACILITIES

Located on the rooftop of Four Seasons Hotel Lisbon, providing breathtaking views of the city and the Tagus River, the Ritz Spa Fitness Centre provides guests with 700 square metres (7,535 square feet) of exclusive facilities.

Work out in the quiet, private atmosphere of this spacious facility, and experience Four Seasons unparalleled personalised service. Highly qualified trainers are available to help guests explore the latest trends in exercise.

- Size: 700 m<sup>2</sup> / 7,535 sq ft

### POOL

The 18-metre (59-foot) indoor lap pool features captivating views over the Hotel gardens and Lisbon's Eduardo VII Park. Located in the Spa area, the pool is heated to between 26°C and 28°C (78°F and 82°F). The poolside Spa café features an all-day health-conscious menu, as well as delicious and restoring herbal infusion beverages.

### GOLF

#### *Aroeira I*

Designed by Frank Pennink, the Aroeira I course skillfully blends the needs of a championship golf course with the harmonious surroundings of a natural landscape. The course runs through a pine-wooded area that is sprinkled with wild flowers and a genuine nature park with many kinds of birds. The English press has named it the “Wentworth of Lisbon,” describing the similarities between Aroeira I and this famous London club.

#### *Aroeira II*

The Aroeira II course has a different concept of golf from Aroeira I, consisting of large

fast greens, some of which are more than 700 square metres (7,536 square feet). With the opening of its second course, Aroeira has become the largest golfing centre in the Lisbon region and is also an attractive leisure and tourism centre, in part, because of its nearby beaches.

#### *Belas Country Club*

Designed by the renowned golf architect William Roquemore, the Belas course, situated between Belas and Queluz, is set in the Carregueira Mountains. Its fairways are spread among the hills and provide excellent views of the Sintra Mountains, which reach as far as Pena Palace and, on the south bank of the river Tejo, Cabo Espichel.

#### *Golf do Estoril*

This course is one of the oldest and most well known golf courses in Portugal. It is famous for its location near the beach resort of Estoril.

#### *Quinta da Beloura*

One of the newest golf courses of the Estoril Coast, the Quinta da Beloura course is set in a 60-hectare (148-acre) area halfway between Cascais and Sintra. Designed by William Roquemore, this course is very flat, providing golfers with a pleasurable but not exhausting game. Along the fairways, more than 40,000 trees have been planted to create a beautiful setting with excellent views of the Sintra Mountains.

#### *Quinta da Marinha*

Located on the famous Estoril Coast, the Quinta da Marinha course was designed by the famous firm of Robert Trent Jones II and is set in a 110-hectare (272-acre) private estate that is wooded with pine trees. Stretching down to Guincho beach, this course has some of the most majestic scenery in Portugal. With a par-4 descent to the sea, hole 13 offers a stunning, picture-postcard vista.

#### *Quinta da Marinha Oitavos*

Oitavos Golf lies within the Sintra-Cascais Natural Park. It is set in an area of great natural beauty, among pine woods and reforested dunes. Ocean views predominate at this seaside golf course, with the beautiful Sintra Mountains and Cabo da Roca, Europe's most western point, as a backdrop. One of the greatest golf architects of our times, Arthur Hills, ex-president of the American Society of Golf Course Architects, designed the layout. He maintained and preserved the unique characteristics of the land while creating a 6,303-yard, par-71 golf course.

---

## INCENTIVE ACTIVITIES

### Sample itinerary

---

- Day 1**      **Arrival at Hotel**  
After a short 15-minute drive from the airport, check in at the Hotel and let a mouth-watering brunch - with views of the Hotel's garden and the Park Eduardo VII - revive you.
- Afternoon**
- Hop on the famed "28" tram, which winds through Lisbon's cobblestone streets and historical sites.
  - Browse the Hotel's 600 museum-calibre pieces of Portuguese contemporary art.
  - Unwind by the pool or pamper yourself in the Hotel's award-winning spa.
  - Work out in the rooftop fitness centre, which affords spectacular, panoramic views of the city.
- Evening** Sample Portuguese hospitality with one of these welcome theme events:
- "A Taste of Portugal" - A Portuguese culinary experience that showcases the richness of the local gastronomy, highlighting the unique flavours of Portugal's different regions.
  - "The Discoveries" - A culinary voyage that follows the routes of the great Portuguese seafarers, blending flavours and spices from Asia, Africa and Brazil.
- 
- Day 2**      **Morning** Depart for a riverside visit to the city's most significant monuments, the Belém Tower and the Hieronimite Monastery (both listed as UNESCO world heritage sites), and the Monument to the Discoveries. At a quick pit stop you'll savour typical Portuguese custard tarts, "Pastéis de Belém."
- Lunch at Coaches Museum, a collection of some of the world's most beautiful 17th- to 19th-century carriages.
- Afternoon**
- Join a regatta or go sailing with personal skippers along the Tagus River.
  - Explore Lisbon's most picturesque quarter aboard a vintage BMW motorcycle sidecar.
  - Enjoy a port-tasting at the National Institute of Porto Wine.
- Evening** Dine like royalty at Queluz Palace, the former residence of the kings of Portugal.
- 
- Day 3**      **Morning** Drive along the coastline from Lisbon to the elegant seaside town of Cascais, and see Cabo da Roca, the most westerly point of continental Europe.
- After a stunning horse show put on by the renowned equestrian school of Leziria, enjoy lunch in the Colares wine cellar, surrounded by oak barrels and nearly 15,000 litres (3,900 gallons) of wine. Guests will be escorted to their tables by monks holding torches.
- Afternoon**

- Introduction to windsurfing, surfing, skate-surfing or body-boarding at Guincho Beach.
  - A ride through the mountain of Sintra at the wheel of your own safari Jeep.
  - Walking tour of Sintra, a UNESCO world heritage town, with its fabulous palaces and old mansions.
  - Horseback riding along Guincho Beach and its surrounding dunes.
- Evening Dine in the revamped docks area where former warehouses, overlooking Lisbon Marina, have been transformed into one of the city's trendiest nightspots.
- 

Day 4

**Morning** Visit the cobbled lanes of Alfama, one of Lisbon's oldest districts, and walk up to St George's Castle, on the peak of one of the city's seven hills.

- Lunch at Casa do Leão within the walls of the Castle.

**Afternoon**

- Improve your swing at one of the 12 golf courses located around Lisbon.
- Thrill to car racing at the Estoril racetracks.
- Choose between these two charming excursions: The Alentejo region and the UNESCO world heritage town of Évora; or Obidos, a walled medieval town resembling an open museum, and Mafra with its famous 18th-century convent.

**Evening** The farewell evening will start with a cocktail in the Almada Negreiros Lounge or in the Hotel garden, followed by a gala dinner in the magnificent Pedro Leitao Ballroom. Decorated by the renowned Espirito Santo Foundation and adorned with tapestries created by Pedro Leitao, one of the most acclaimed artists of Portuguese contemporary art, this impressive room is the perfect venue for the memorable grand finale of an unforgettable programme.

---

Rooms	Dimensions		Size (m <sup>2</sup> )	(sq ft)	Height		Classroom	Hollow square	U-shape	Theatre	Reception	Banquet rounds	Conference/ boardroom
	(m)	(ft)			(m)	(ft)							
- Pedro Leitão Ballroom	30.2 x 15.1	99.1 x 49.5	456	4,908	4.2 – 5.5	13.8 – 18	320	180	150	500	500	400	-
- Vasco da Gama	14.8 x 6.3	48.4 x 20.7	93	1,001	3.8	12.5	50	45	40	90	90	60	40
- D. Henrique	8.2 x 6.2	27 x 20.3	51	549	3.4	11.2	20	20	15	35	30	30	25
- Boardroom	9.2 x 7.1	30.2 x 23.3	65	700	3.2	10.5	-	-	-	-	-	-	20
- Marques de Pombal	20.9 x 8.8	68.6 x 28.9	184	1,981	3.1	10.2	75	65	55	120	120	80	45
- Camões	9.5 x 8.4	31.2 x 27.6	80	861	2.9	9.5	35	25	20	50	50	40	30
- Gil Eanes I	10.1 x 5.5	33.1 x 18	56	603	2.9	9.5	30	25	20	50	50	40	30
- Gil Eanes II	7.1 x 4.9	23.3 x 16.1	35	377	2.8	9.2	12	12	10	20	20	20	15
- Afonso de Albuquerque	7.8 x 5	25.6 x 16.4	39	420	2.9	9.5	15	18	15	30	30	20	20
- Fernando Pessoa I	28.4 x 9.3	93.2 x 30.5	290	3,121	3.3	10.8	130	90	81	250	300	230	90
- Fernando Pessoa II	18.1 x 11.2	59.4 x 36.8	154	1,658	3.3	10.8	50	36	27	100	150	120	36
- Tejo	15.6 x 6.8	51.1 x 22.3	100	1,076	3.5	11.5	45	45	42	75	75	48	48
- Mondego	10 x 6.2	32.8 x 20.3	62	667	3.5	11.5	30	30	27	50	50	36	30
- Guadiana	10 x 6.2	32.8 x 20.3	62	667	3.5	11.5	30	30	27	50	50	36	30
- Douro	9.6 x 6.8	31 x 22.2	64	689	3.5	11.5	30	30	27	50	50	36	24