



FOUR SEASONS RESORT
Bali at Jimbaran Bay

Quick Reference Guide

Last updated May 3, 2012 | For additional information please contact the resort directly

Four Seasons Bali at Jimbaran Bay
Jimbaran, Kuta Selatan, Bali, 80361, Indonesia
Tel 62.361.701010 | Fax 62.361.701020 | Res 62.361.701010

www.fourseasons.com/jimbaranbay



Jimbaran
Kuta Selatan, Bali 80361, Indonesia
Tel 62.361.701010
Fax 62.361.701020
Res 62.361.701010

AIRPORT

- Ngurah Rai International Airport
(DPS): 15 minutes (10 kilometres/16 miles)

TABLE OF CONTENTS

- 2 Introduction
- 4 Destination
- 11 Conference Facilities
- 15 Guest rooms, Suites and Private Residences
- 23 Dining
- 24 Recreational Facilities
- 28 Incentive Activities
- 30 Appendix: Conference Chart

One of more than 17,000 islands that make up Indonesia, enchanting Bali offers hillsides lined with stepped rice paddies, soaring volcanoes, lush forests, and beaches lapped by the crystal-clear waters of the Indian Ocean. On its southern shores, Four Seasons Resort Bali at Jimbaran Bay offers a tranquil and revitalising sanctuary.



Perched on the cliff-top above a dazzling white beach – considered among the best in Bali and famed for its glorious sunsets – Four Seasons Resort Bali at Jimbaran Bay offers an exclusive enclave of 147 guest rooms and nine private residences built in traditional Balinese style. Thatched-roof villas cascade down the terraced hillside, through lush tropical gardens and secluded courtyards, to the edge of the ocean. Endless diversions include an infinity pool, tennis courts, an on-site cooking school, a full-service spa and fitness centre, an intimate yet versatile function space and a wide range of recreational activities.

Just a one-hour drive away, in a world where rice terraces and cascading water gardens share the jungle with ancient shrines, Four Seasons Resort Bali at Sayan broadens the options for dining and recreation, and provides a perfect venue for intimate groups. The meeting and function space includes a 54-square-metre (580-square-foot) boardroom, as

well as gardens, a private dining room and expansive villas suitable for high-level business meetings or intimate social occasions.

TRANSPORTATION

The Resort is only a 15-minute drive from Ngurah Rai International Airport in Denpasar. The airport is served by a number of international airlines, including Cathay Pacific, China Airlines, Continental Micronesia, EVA Air, Garuda Indonesia, Japan Airlines, Malaysia Airlines, Qantas, Royal Brunei, Singapore Airlines and Thai International.

Services provided by the Resort

Transfers are available between Four Seasons Resort Bali at Jimbaran Bay and Four Seasons Resort Bali at Sayan. Please enquire at the Concierge; fee applies.

Guests can rent a sightseeing car and driver on an hourly basis, available through the Concierge. Self-drive cars are also available for rental with a valid international driver's licence.

WEATHER CHART

Month	°C		°F	
	Highs/Lows	Highs/Lows	Highs/Lows	Highs/Lows
January	30	/ 17	86	/ 62
February	29	/ 17	84	/ 62
March	29	/ 17	84	/ 62
April	31	/ 17	88	/ 62
May	31	/ 18	88	/ 65
June	31	/ 19	88	/ 67
July	31	/ 21	88	/ 70
August	32	/ 22	90	/ 71
September	32	/ 21	90	/ 70
October	32	/ 20	90	/ 68
November	31	/ 19	88	/ 66
December	31	/ 18	88	/ 64

DESTINATION

On an island that is beautiful almost beyond belief and has close to 20,000 temples, the Balinese number around three million. Most of them are Hindu – and renowned for their spiritual approach to life. A tropical haven with a relaxed pace, Bali is famous for its artistic traditions, including dance, sculpture, painting, leather, metalworking and music. Four Seasons guests can absorb the exotic Balinese culture that surrounds them by visiting nearby attractions such as the cliff-top Uluwatu Temple, Bali Bird Park and Reptile Park, the stone-carving village of Batubulan, Celuk, known for its gold and silver jewellery, and Mas, home to Bali's most prominent woodcarvers.

Please note that guests must have passports valid for a minimum of six months from the date of arrival for entry into Indonesia. Please check with your local Indonesian government representative for visa requirements.

WEATHER

Bali enjoys comfortably warm temperatures with mountain breezes and relatively low humidity from April to October. The rainy season, from November to March, brings short bursts of rain interspersed with brilliant sunshine, warmer temperatures and higher humidity.

LOCAL ATTRACTIONS AND ACTIVITIES

At Four Seasons, you enjoy a unique vantage point from which to explore the sights, sounds and experiences around you. We hope the highlights of local attractions below help simplify your planning. Please let us know how else we can assist you.

To help plan a just-right-for-you vacation, you are invited to a private session with one of the Resort's Personalised Paradise Planners. Experts in all things Bali, our planners can assist you in creating the best blend of leisure activities, making suggestions for special occasion dining, tailored spa programmes, island tours, or other on- and off-site sports activities, all packaged into a pre-planned personalised itinerary. Appointments can be made prior to or upon arrival at the Resort.

Onsite

Sunset mountain bike tour:

- Enjoy the Resort's sunset mountain bike tour. Guest can experience a local guide/tour side.

Within a few minutes walk of the Resort

Sourcing Bali – Personal Shopping Services:

- Sourcing Bali's highly trained staff has the knowledge and experience to assist guests in fulfilling their specific shopping requirements, including refreshments and information on best buys. Sourcing Bali can also arrange all packing and shipping of bulky purchases. They help to maximize our guests' time, leaving them with more time to enjoy their holiday in Bali.

Onsite

Ganesha Gallery:

- With a focus on the artist's vision of Bali, the Ganesha Gallery exhibits a different local or international artist. Located at Four Seasons Resort Bali at Jimbaran Bay.

Within a 20-minute drive of the Resort

Uluwatu Temple:

- Built in the 11th century, the Uluwatu Temple is famous for daily performances of the Kecak dance, which developed in the 1930s in the village of Bona. A very exiting dance to watch, it is performed by a large group of chanting men in a circle.

Waterbom Park:

- Come and join the fun at Waterbom Park, where more than a kilometre (close to a mile) of top quality water slides wind through landscaped tropical gardens in the heart of Kuta. Relaxation is the key at Bali's only waterpark and there are plenty of activities to choose from – a leisurely voyage down the lazy river, a scenic slide through tropical vegetation on the jungle ride or the sheer excitement of the race track, where speeds can reach up to 50 kilometres (30 miles) per hour. All sports equipment and slides at Waterbom Park are maintained to the highest international standards; the water is naturally chlorinated using sea salt and there are Australian-trained lifeguards on hand at all times to ensure complete safety.

Within a 30-minute drive of the Resort

Bali by Horseback:

- See Bali in a way you've never seen it before! Join our horse-riding treks through the lush rice terraces around Kerobokan or the beach along the beautiful southwest coast. Rides are suitable for all ages and treks last one, two or three hours. Don't forget the special sunset ride along the beach.

Surfing:

- Excerpts and reviews by the surf set:

Padang-Padang Beach (30 minute drive)

Next break down from Ulu. Park your car or leave your bike at the top of beach or take the path from Ulu. A very hollow left made more challenging by proximity to cliff. Hati-hati! A lost board usually means the end. Needs a big swell to show. Very dangerous below mid-tide.

Bingin Beach (30 minute drive)

Next channel down from Padang. A clean, fun, hollow left good up to 7. Best at low to medium tides. Kick out before the inside ledge starts to suck out. Usually crowded with surfers who want a break from Ulu.

Uluwatu Beach (30 minute drive)

Home of the world famous left, with three main areas depending on the tide. The Peak is a high-tide break, peeling down to the inside past the cave. It handles small and large swells from the right direction. Race track, at mid-tide, starts in front of the cave, peeling down the line past big rock. Use your discretion on length of ride. Breaks best up to 8, with straight-line swells. Outside corner is a low-tide wave and anything over 12 you might want to paddle out from the next beach. If you can't fight the current and

get into the safety of the cave, swim down to the beach.

Suluban Beach (30 minute drive)

A favourite playground for surfers, the Annual Surf Championships are partly staged here. Jimbaran, around the corner, is good for swimming.

Canggu Beach (45 minute drive)

Lava ledge, with a left and right, the best break being determined by size and swell direction. Take a left turn at Kerobokan village, north of Legian.

NyangNyang Beach (30 minute drive)

Tough climb down steep cliff, but worth it. Several selections off goat channel have left and right. The right in front of goat track is good on SW swell. These break best up to 6.

Within a 45-minute drive of the Resort

Celuk and Singapadu Villages:

- Celuk and Singapadu Villages are located on the way to Ubud, and specialise in gold and silver work.

Tohpati Village:

- Tohpati Village, also located on the way to Ubud, specializes in painted textiles, batik and ikat.

Batubulan Village:

- A small village where stone statues of fanged demons, noble warriors and animals of all shapes and sizes are left displayed under shady trees. Young boys and old men are accomplished stone carvers in Batubulan and can be seen plying their craft by the roadside. Batubulan is also famous for the daily performance of the Barong Dance from 9:30 am to 10:30 am. More like a drama than a dance, the Barong story depicts the age-old struggle between the good and the righteous (the Balinese call it the path of Dharma, or Right-Doing) and the agents of destruction.

Mas and Kemenuh Villages:

- Mas and Kemenuh Villages, located on the way to Ubud, are renowned wood-carving villages. The Njana Tilem Gallery has a collection of very fine quality wood carvings.

Bali Bird Park and Reptile Park:

- Discover the Bali Bird Park, home to more than 1000 species of birds, including 250 rare and exotic species. Spectacular rain-forest walk-in aviaries, beautiful natural surroundings, and guided tours given by resident biologists make for an unforgettable visit. At the same time, visit the Bali Reptile Park. See the famous Komodo dragons!

Barong Dance:

- More like a drama than a dance, the Barong story depicts the age-old struggle between what is good and righteous (the Balinese call it the path of Dharma, or Right-Doing) and the agents of destruction. The Barong is a mystical lion-dragon creature played by two men. A benevolent fellow, the whiskers of his beard are believed to hold healing powers. Performed in Batubulan Village and Puri Sared, Ubud.

Within a 1-hour drive of the Resort

Ubud:

- World famous for decades as an artistic community, Ubud has its own magic and particularly beautiful natural surroundings. The gracious way of life has drawn celebrities and artists from all over the world, some of whom have adopted it as their own home. The small villages surrounding Ubud are fascinating venues featuring a variety of arts and crafts, music and dance.

Sobek's whitewater rafting trip on the Ayung River:

- Sobek's whitewater rafting trip on the magnificent Ayung River is one of Bali's most sensational tours. The Ayung is a fast-flowing river that carves its way through soft volcanic rock to produce a series of exciting Class II rapids like Snake, Montok and Pinball. Journey through narrow, deep-sided gorges, past tranquil rice paddies and stunning jungle scenery while observing rural Balinese life from the river. Sobek is located in Begawan Village.

Goa Gajah Temple, Bedulu Village:

- Located 2 kilometres (1.2 miles) east of Teges, near Ubud, this complex overlooks the Petanu River and consists of a Siwaite rock-cut cave, a bathing place, a monks' chamber, a number of Buddhist rock-cut stupas and statues, and several foundations. Dating from the 11th century, the temple features statues of Ganesha and a sacred bathing pool.

Gunung Kawi Temple:

- Gunung Kawi (Mountain of Poets) is an 11th century sanctuary with gurgling springs and rock-cut memorials to long-dead kings.

Monkey Forest:

- Located in Ubud.

Puri Lukisan Museum:

- The Puri Lukisan Gallery, established in 1954, is dedicated to showing the works of local painters. It is an excellent place to get an overview of the stylistic differences between artists.

Neka Gallery:

- The Neka Gallery is home to a good collection of traditional Balinese style paintings as well as some modern paintings.

Agung Rai Museum of Art (ARMA):

- For centuries, the Balinese have incorporated arts and crafts into their religious rituals. The earliest examples of Balinese paintings date as far back as the mid-1400s. As European artists began flocking to Bali in the 1930s, Western influences were gradually introduced. The concept of art for art's sake began to appear in the works of some artists who turned from the more usual, religiously inspired images. Collectible art can be found in galleries located mostly in Ubud. A seemingly endless collection of traditional crafts such as weavings, carvings, pottery and attractive souvenir paintings are available in virtually every village and hamlet throughout the island.

Seniwati Gallery of Art by Women:

- The works of local and international female painters are exhibited in this gallery.

Blanco's House:

- When the late Spanish painter Antonio Blanco married a Balinese lady, the former President honoured him with land in Bali. Blanco's works can be found in Bali and around the world in art galleries and private collections. His beautiful house is now a gallery devoted to his work.

Komaneka Gallery:

- With an emphasis on modern paintings, this gallery exhibits the work of local and foreign artists.

Rudana Gallery:

- The Rudana Gallery has a good collection of traditional and contemporary Balinese paintings.

Njana Tilem Gallery:

- Wood carving – a skill dominated by clerical families – is passed from generation to generation. The talent and tradition of master carver IB Njana is continued today by his grandsons. Wood carvings of the finest quality are displayed in his gallery.

IB Marka Gallery:

- The IB Marka Gallery is home to a massive collection of wood carvings. Visit the carvers in their workshop beside the gallery!

Kecak Dance:

- In the Kecak Dance as many as 100 men simulate the orchestration of the gamelan, with its Kecak or "cha-a-chak" sounds. The chorus acts as a unit conquering the individual ego and attains an ecstatic trance. This sound represents the chattering on monkeys – Hanoman and his allies – but the chorus also emits a long hissing sound when the menacing Rahwana leaps into the centre of the stage. Again, the unfolding drama represents the search for balance between positive and negative. Performed in Padang Tegal, Ubud, Puri Peliatan and Uluwatu.

Ramayana Dance:

- The story revolves around the brave Rama, the protagonist and his devoted wife, Sita. They are the rightful future King and Queen of Ayodya, but have been unjustly banished to the forest due to palace intrigues. The couple along with Rama's brother, Laksamana, face many hardships. The battle for survival takes them to the land of Alengka which is ruled by the giant Rahwana, king of demons. Performed in Puri Saren Ubud each Tuesday, starting 8:00 pm.

Wayang Kulit Puppet Performance:

- Among all of Bali's lively dramatic arts, the shadow theatre is perhaps the most enduring, the most popular and the most revealing of Balinese concepts of this world and the next. Wayang means 'shadow', and kulit means 'skin'. The procession of lace, lamplit puppet shadows and profusion of voices – speaking, shouting, singing and chanting – are all performed by one man working non-stop behind a white cotton

screen. Performed at the Oka Kartini Theatre on Sunday and Wednesday starting at 8:00 pm.

Legong Dance:

- The Legong Dance is performed by three female dancers and is an abbreviation of one of the oldest traditional Balinese dances performed during temple ceremonies. It is a study in female grace and exquisite style. Performed in Puri Saren, Ubud on Monday and Saturday.

Rafting, kayaking or canoeing down the Ayung River:

- Experience the thrills and adventure of a lifetime as you steer yourself down the Ayung River in a canoe, kayak or raft. Instructors are on hand to lead you through the more than 25 sets of challenging and fun-filled rapids. Full instruction is given before you start by highly trained experts. The river is rated Class II so it is suitable for most people even if they have never rafted or kayaked before.

Sailing and cruises:

- Cruises and sailboats can be booked easily.

Within a 1.5-hour drive of the Resort

Elephant Safari Park:

- Don't leave Bali without visiting the truly unique and spectacular Indonesian elephants. Located in the cool jungle/forest of Desa Taro (20 minutes north of Ubud), the Elephant Safari Park offers you the chance to feed and interact with these wonderful creatures in a natural setting. A 30-minute elephant safari ride is available to those who wish to do more than just look. Then join in with the elephants as they take a bath, immersing themselves in the cool waters of the lake. Elephant safaris are suitable for all ages.

Tampaksiring and Tirta Empul Sacred Spring:

- Just north of Tampaksiring lies the sacred spring of Tirta Empul. Legend has it that the gods created this rejuvenating pool after their army was poisoned by the demon king, Mayadenawa; it has been considered a holy place since the 10th century.

Nyoman Gunarsa Museum:

- Gunarsa combines the ancient Balinese "Wayang" or puppet shape with more abstract strokes. His paintings depict stories from the Indian epics Mahabharata or Ramayana.

Bicycling with Bali Adventure:

- This off-site bicycling tour, organised by Bali Adventure, is a great way to see the area. The 16-kilometre (10-mile) easy ride winds its way along quiet village roads, passing temples and shrines and crossing golden rice fields where people work as they have for a thousand years. The guides will tell you about local Balinese customs and culture while you travel through shady plantations. A delicious lunch is served at the Elephant Safari Park Restaurant.

Paddy Adventure :

- **ATV Ride**
This thrilling two-hour ride on an all-terrain vehicle is a memorable way to see Bali's

lush green scenery. Top-of-the-line vehicles and protective equipment are provided, as well as a professional instructor to ensure a safe and pleasant journey. Telephone: 62 (361) 467948

Mountain Cycling

Relax and explore the splendid scenery of Balinese mountains and traditional rice paddies on this enjoyable cycling trip.

Within a 2-hour drive of the Resort

Batur Temple and Kintamani:

- The spectacular mountainous region around Kintamani – with its deep crater lake and bubbling hot springs – makes this region a 'must see' on any Bali itinerary.

Besakih Temple in Karangasem:

- The Besakih Temple or 'mother temple' – greatest of all Balinese sanctuaries – consists of 22 separate structures and is perched high on the slopes of Mount Agung. The temples were built between the 14th and 17th centuries. Prominently featured are the three seats in the lotus throne, in which shrines are dedicated to Brahma (right), Siwa (centre) and Wisnu (left).

Within a 8-hour drive of the Resort

Best of Bali:

- The Hotel's four-wheel-drive departs every morning for an 8-hour excursion through spectacular sceneries to visit traditional villages. We recommend that you take along a picnic basket, and spend a leisurely day discovering the exotic fragrances of this tropical island. Please contact the Resort Concierge for more information and reservations.

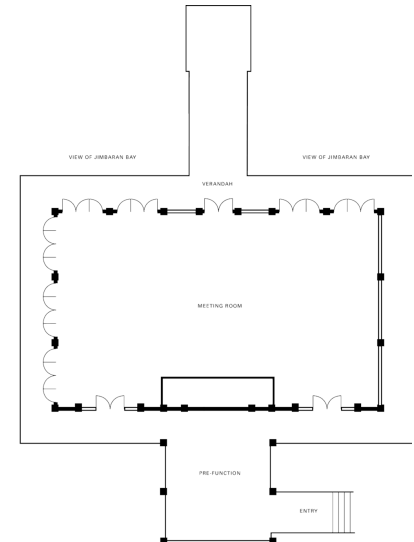
CONFERENCE FACILITIES OVERVIEW

Total Space	198 m ² 2,131 sq.ft.
Largest Ballroom	-
Meet and Feed (max. capacity)	24
Breakouts	-
Banquet (max. capacity)	100
Outdoor Banquet (max. capacity)	200
Private Dining (max. capacity)	14

CONFERENCE FACILITIES

Four Seasons Resort Bali at Jimbaran Bay is ideal for small executive retreats, high-end incentive events and exclusive social occasions for groups of up to 100 people. Its 198 square metres (2,131 square feet) of meeting and function space is further enhanced by various outdoor venues. A dedicated multifunctional meeting pavilion – complete with soaring thatched roof, wraparound terrace and an abundance of space and light – combines the ambience of the tropics with full technological support. Cocktail parties and other alfresco functions, such as barbecues and themed events, may be staged in settings that range from the terraced gardens to the lower pool deck, the foreshore or the beach.

Meeting and function rooms



TECHNICAL ASSISTANCE

The Jepun Sari meeting room is equipped with the following:

- Professional soundboard
- A variety of audio and video equipment
- Wired or wireless Internet access

MUSIC AND ENTERTAINMENT

Our Conference Services Manager will be happy to arrange any type of music or entertainment for meetings. Entertainment for smaller social gatherings can be arranged through our Catering Coordinator. Some examples include:

Keroncong Band: From the island of Java, this traditional string orchestra and vocalist offer classical Indonesian ballads that provide a soothing background for lunch or dinner.

Joged Bumbung: This flirtatious ritual begins with a welcome dance. Later a man or woman from the audience is invited to join in.

Kecak Dance: A dramatic dance of as many as 100 men that represents the search for balance between positive and negative.

Panyembrama: This welcoming dance is performed by four young girls. At the end of the dance, each girl carries a basket of flowers and sprinkles them throughout the audience. This dance is regularly performed at temple festivals to welcome visiting deities.

Trio Rindik: A three-piece group with two bamboo xylophones and one flautist.

Trio Gender: A three-piece group on metal xylophones.

Batak Band: This is a three- or four-piece band that features lively guitar music. Bataks are known for being outgoing and talented, and this band is best compared to the Mexican mariachis.

Gamelan: The word "gamelan" is strictly Javanese. A basic principle of gamelan music is that instruments with a higher range of notes are struck more frequently than those with lower ranges. Most musicians play a variety of instruments of the gangsa meatallophone family, which consist of bronze bars suspended over bamboo resonators.

RECEIVING AND MAINTENANCE

The Resort features a full-service shipping and receiving office. All packages should be sent to the attention of the Conference Services Manager with the group's name highlighted. There is limited space available for storage, so please time shipping to coincide with the group's arrival. Contact the Conference Services Manager to make special arrangements for delivery of oversized packages and to coordinate shipping of post-conference materials.

DESTINATION MANAGEMENT

Our Conference Services Manager can help accommodate your group's special requests. For detailed information, please contact the Hotel directly. In addition, we recommend the following destination management companies:

Pacific World Nusantara
Jl. Danau Poso 51
Sanur, Bali, Indonesia
Telephone: 62 (361) 282 474
Fax: 62 (361) 281 740

Bali World Travel
Jl. Kertha Petasikan II/17
Denpasar, Bali, Indonesia
Telephone: 62 (361) 722 920
Fax: 62 (361) 723 334

Dimensions in Bali
Jl. Pulau Moyo No. 15X
Denpasar, Bali, Indonesia
Telephone: 62 (361) 729 720
Fax: 62 (361) 262 781

SPOUSE PROGRAMMES

The Resort offers a wide range of activities to suit all tastes and is ideally situated for sight-seeing and shopping excursions. Enjoy a day of whitewater rafting or sailing, take a land cruise to explore the island, go shopping with a guide, be pampered at the Spa or learn how to cook Balinese, Indonesian and Asian cuisine at our Cooking School. Guests

can also design their own "Bali As You Please" tour.

CHILDRENS AND FAMILY PROGRAMMES

White water rafting, golfing, shopping tour to Kuta or Ubud, sailing, cruises, cycling or spend the day with the animals at The Bird Park, Reptile Park, Monkey Forest and Elephant Park.

BUSINESS SERVICES

Around the clock, Four Seasons can assist you with business, entertainment or travel arrangements through the Business Centre and resourceful, multilingual Concierge.

- 24-hour business services
- Airline reservation service
- Audiovisual equipment
- Cellular telephones
- Computers
- Japanese translation and interpretation service
- Wired or wireless Internet access

JEPUN SARI

Dimensions	18 x 11 m
	59 x 36 ft
Size	198 m ²
	2,131 sq.ft.
Height	4 m
	13 ft

Capacities

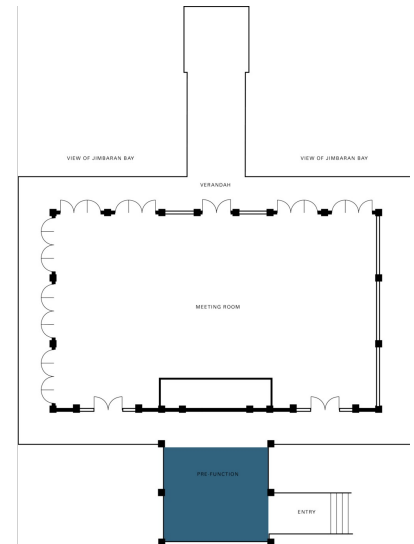
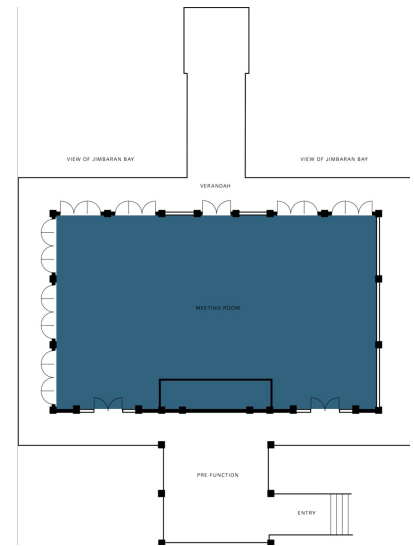
Classroom	90
Hollow square	64
U Shape	49
Theatre	160
Reception	200
Banquet Rounds	100

PRE-FUNCTION AREA

Dimensions	10.4 x 6.1 m
	34 x 20 ft
Size	55 m ²
	590 sq.ft.
Height	4 m
	13 ft

Capacities

Reception	40
-----------	----



GUEST ROOMS, SUITES AND PRIVATE RESIDENCES OVERVIEW

Taking their inspiration from traditional Balinese architecture, the 156 villas and private residence rentals at Four Seasons Resort Bali at Jimbaran Bay are housed within free-standing thatched-roof villas. Surrounded by lush gardens, each villa has its own courtyard and extensive indoor and outdoor living areas, including a private plunge pool from which guests enjoy infinite views of palm-fringed Jimbaran Bay. Bedrooms are air-conditioned, while the living quarters are open-air.

The Balinese theme is carried through to the décor, from the handcrafted teak furniture to antique artefacts and exotic fabrics in rich, sensual colours. Each bathroom has a deep soaking tub and separate shower, with access to a secluded outdoor garden shower. Enhancements in all accommodations bear the thoughtful hallmarks of Four Seasons, including Bose entertainment centres and LCD televisions.

<i>Room Category</i>	<i>#</i>	<i>Beds</i>	<i>Size (m²)</i>	<i>View (sq ft)</i>
- Royal Villa	2	1 King and 2 twin	600	6,462 Jimbaran Bay
- Oceanfront Two-Bedroom Villa	2	1 King and 2 twin , or 2 King	370	3,985 Jimbaran Bay
- Ocean-View Two-Bedroom Villa	2	1 King and 2 twin	370	3,985 Jimbaran Bay
- Two-Bedroom Villa	2	1 King and 2 twin	370	3,985 Tropical garden
- Oceanfront One-Bedroom Villa	25	1 King or 2 twin	200	2,152 Jimbaran Bay
- Deluxe Ocean-View One-Bedroom Villa	26	1 King or 2 twin	200	2,152 Panoramic views of Jimbaran Bay
- Ocean-View One-Bedroom Villa	39	1 King or 2 twin	200	2,152 Partial ocean views over traditional thatched roofs and tropical foliage
- One-Bedroom Villa	49	1 King or 2 twin	200	2,152 Garden
- Four-Bedroom Residence Villa	2	3 King and 2 twin	2,209 – 2,247	23,780 – 24,187 Tropical garden
- Three-Bedroom Residence Villa	4	2 King and 2 twin	1,662 – 2,068	17,890 – 22,260 Garden view
- Three-Bedroom Garden Residence Villa	1	2 King and 2 twin	1,662 – 2,068	17,890 – 22,260 Garden view
- Two-Bedroom Garden Residence Villa	2	2 King or 1 King and 2 twin	1,076 – 1,230	11,582 – 13,240 Garden view

Guest Room Overview

The Resort's 147 exceptionally sized villas nestle within a tropical paradise. One-Bedroom Villas, Ocean-View One-Bedroom Villas and Deluxe Ocean-View One-Bedroom Villas line the terraced hillsides, looking out onto the gardens or over Jimbaran Bay. The separate sleeping, bathing and living/dining pavilions are all within a private walled garden courtyard. Larger villas feature open-air living and dining areas enhanced by a

kitchenette and pantry – a configuration well suited to private entertaining or to small groups.

Oceanfront One-Bedroom Villas, Two-Bedroom Villas and Oceanfront Two-Bedroom Villas have private sun decks where guests can relax and soak up the gentle sea air. Two waterfront Royal Villas ensure absolute privacy behind high stone walls and feature two bedrooms in separate thatched pavilions, a large swimming pool, a sauna, hot and cold plunge pools, two large sun decks and the optional services of a butler.

Private Residence Overview

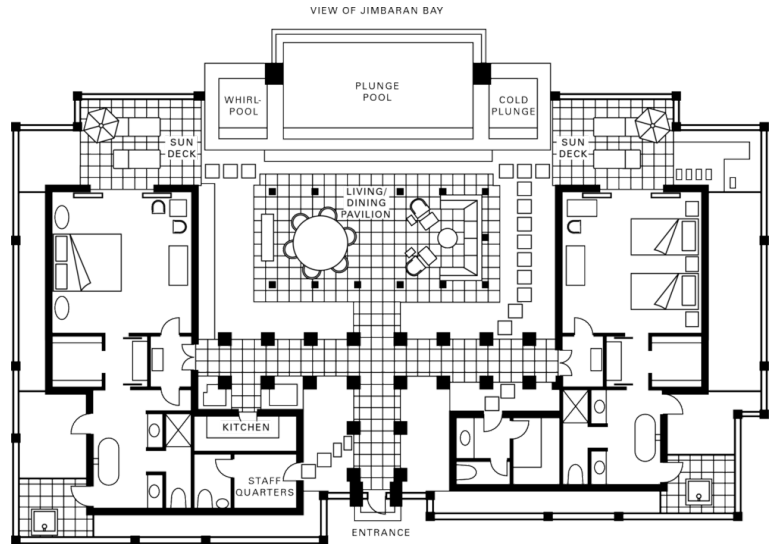
Four Seasons private residence villas offer all the comforts of home, accompanied by the Resort's superb amenities only a short stroll away. The nine expansive private residence villas at Four Seasons provide an appealing alternative for group accommodations, ranging from two- to four-bedroom villas.

Adjacent to the Resort and just steps from the beach, these exclusive accommodations offer the ultimate in privacy and comfort. Each has its own private pool surrounded by sun decks, and a secluded shower outside every bedroom. Perfect for relaxation or entertaining, the open-air living quarters include a library, a fully equipped kitchen and a state-of-the-art entertainment centre with a CD player, DVD player and VCR, radio and television. Each bedroom has a canopied king bed. For added convenience, there is a guest powder room.

ROYAL VILLA

Number 2
Beds King and two twin beds
Size 600 m²
6,462 sq ft

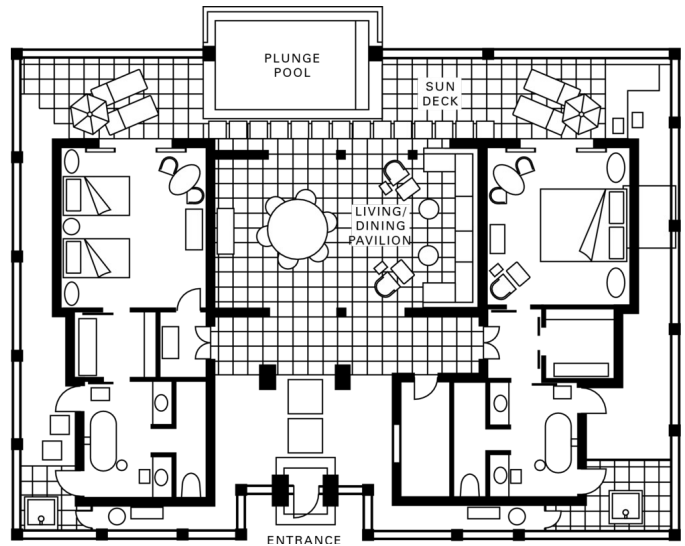
Location
Waterfront
View
Jimbaran Bay



OCEANFRONT TWO-BEDROOM VILLA

Number 2
Beds King and two twin beds,
or two king beds
Size 370 m²
3,985 sq ft

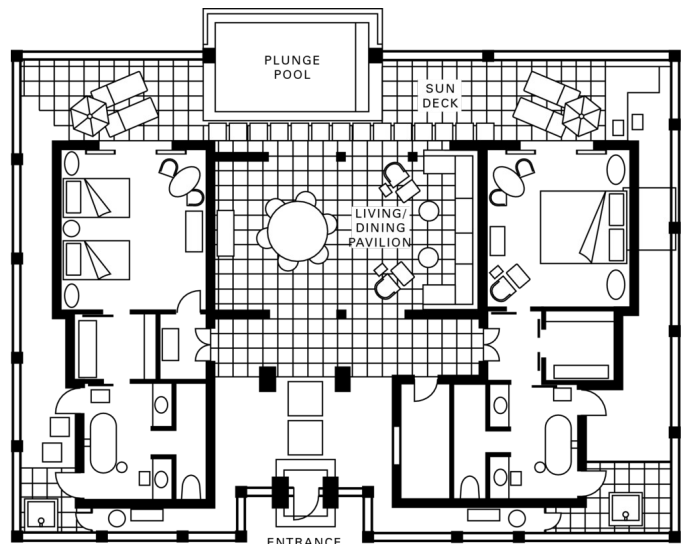
Location
Nearest to the ocean
View
Jimbaran Bay



TWO-BEDROOM VILLA

Number 2
Beds King and two twin beds
Size 370 m²
3,985 sq ft

Location
In offset terraces to maximize privacy
View
Tropical garden



OCEANFRONT ONE-BEDROOM VILLA

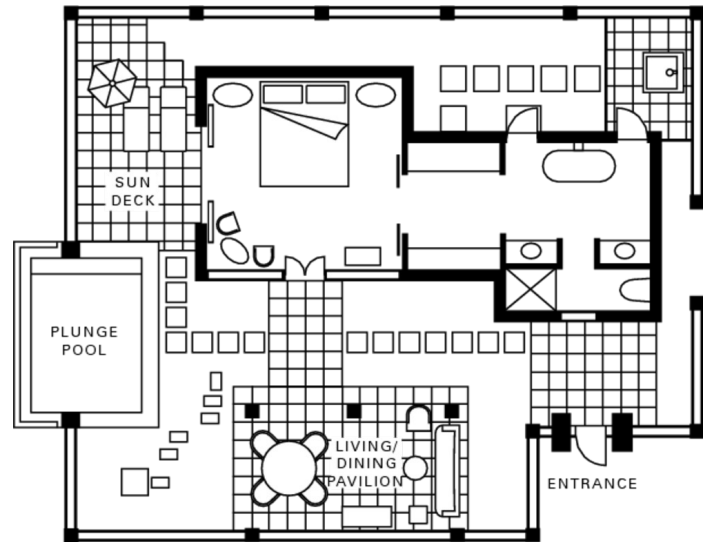
Number 25
Beds King or two twin beds
Size 200 m²
2,152 sq ft

Location

In the front row of villas, nearest to Jimbaran Bay

View

Jimbaran Bay



DELUXE OCEAN-VIEW ONE-BEDROOM VILLA

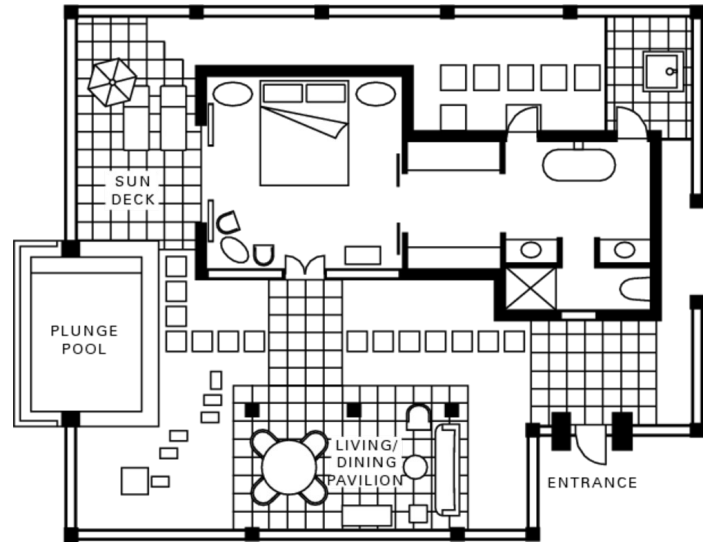
Number 26
Beds King or two twin beds
Size 200 m²
2,152 sq ft

Location

Set in tiered terraces along a lush, tropical hillside

View

Panoramic views of Jimbaran Bay



OCEAN-VIEW ONE-BEDROOM VILLA

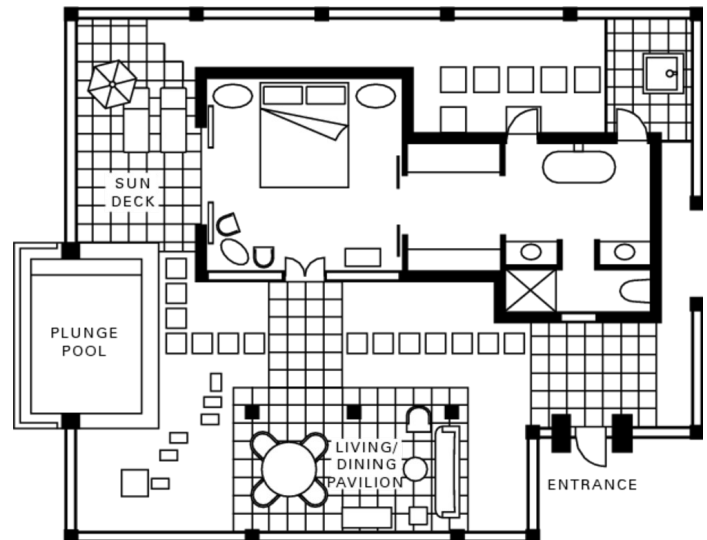
Number 39
Beds King or two twin beds
Size 200 m²
2,152 sq ft

Location

Set in staggered terraces along a lush, tropical hillside

View

Partial ocean views over traditional thatched roofs and tropical foliage



ONE-BEDROOM VILLA

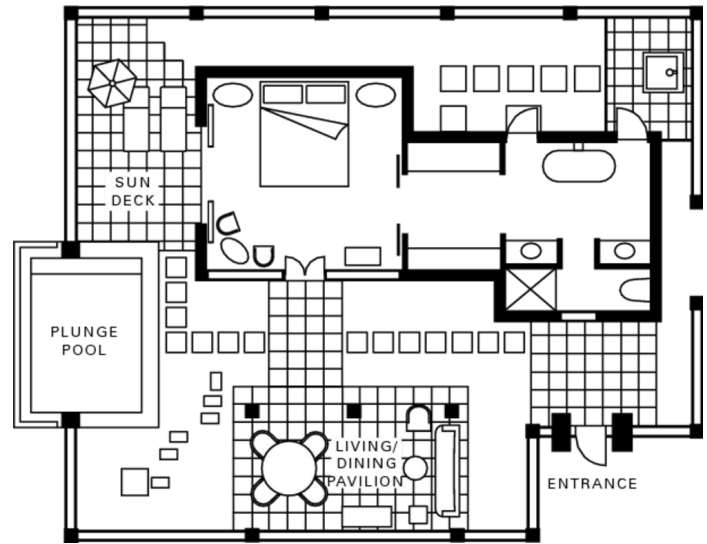
Number 49
Beds King or two twin beds
Size 200 m²
2,152 sq ft

Location

Set in staggered terraces along a lush, tropical hillside

View

Garden



FOUR-BEDROOM RESIDENCE VILLA

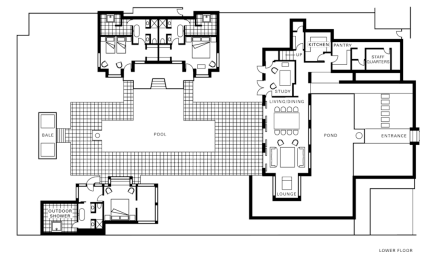
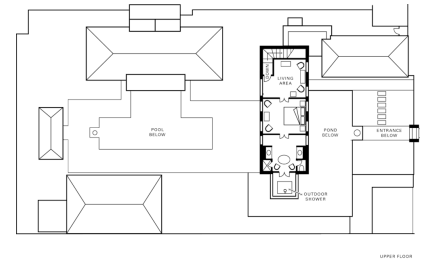
Number 2
Beds Three king beds and two twin beds
Size 2,209 – 2,247 m²
23,780 – 24,187 sq ft

Location

Adjacent to the Resort and within a two-minute walk of the beach

View

Tropical garden



THREE-BEDROOM RESIDENCE VILLA

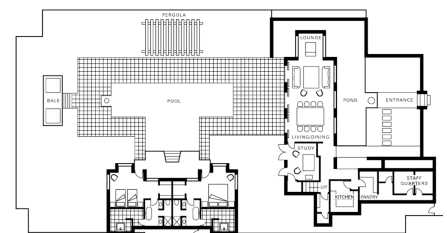
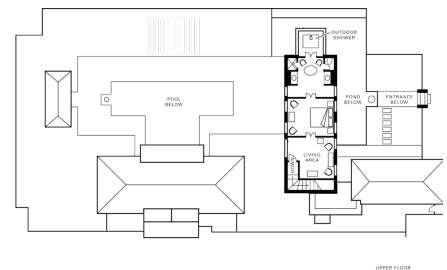
Number 4
Beds Two king beds and two twin beds
Size 1,662 – 2,068 m²
17,890 – 22,260 sq ft

Location

Adjacent to the Resort and within a two-minute walk from the beach

View

Garden view



THREE-BEDROOM GARDEN RESIDENCE
VILLA

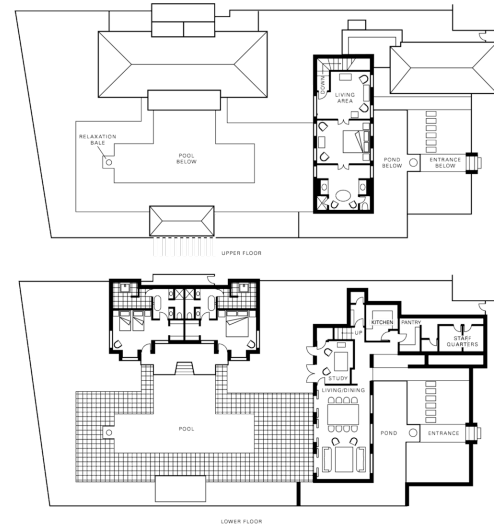
Number 1
Beds Two king beds and two
twin beds
Size 1,662 – 2,068 m²
17,890 – 22,260 sq ft

Location

Adjacent to the Resort and within a
two-minute walk from the beach

View

Garden view



TWO-BEDROOM GARDEN RESIDENCE
VILLA

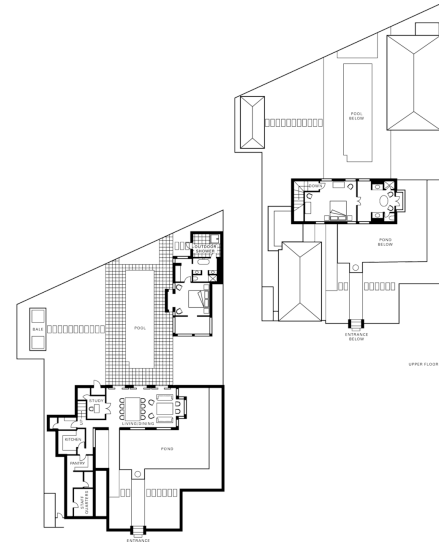
Number 2
Beds Two king beds or one
king and two twin beds
Size 1,076 – 1,230 m²
11,582 – 13,240 sq ft

Location

Adjacent to the Resort and within a
two-minute walk from the beach

View

Garden view



AMENITIES

- All news cable network
- CD player
- Complimentary newspaper with breakfast
- Down pillows
- DVD player
- Fax machine on request
- Hair dryer
- Hypo-allergenic pillows on request
- In-room safe
- Iron and ironing board
- Multi-line telephone(s) with voicemail
- Orthopaedic pillows on request
- Refrigerated private bar
- Tea/coffee maker
- Thick terry bathrobes
- Twice-daily housekeeping service
- Wired or wireless Internet access
- Plasma/LCD screen television

GUEST SERVICES

- 24-hour In-Villa Dining
- 24-hour laundry/dry-cleaning/pressing
- 24-hour multilingual Concierge
- Airport transfers
- Car rental desk
- Complimentary overnight shoeshine
- Cooking school
- Gift shop
- Non-smoking rooms
- One-hour pressing
- Restaurant
- Salon services
- Self-parking
- Services and amenities for younger guests
- Umbrellas
- Valet parking

VIP GIFTS AND WELCOME AMENITY

Special arrangements can be made for clients to purchase welcome amenities or gifts for their VIP guests.

- Champagne
- Fruit presentation
- Cake presentation
- Children's amenity
- Sorbet presentation
- Chocolate
- Assorted pastries
- Late arrival amenity
- Big snack amenity

- Cookie amenity
- Mimpi Manis bedtime storybook
- Flower arrangement
- Wine
- Flower petals (for bathtubs)

Note: There is a fee for all amenities, plus local tax and 10% service charge.

DINING HOURS OF OPERATION

Taman Wantilan

Breakfast	6:30 am - 11:00 am
Dinner	6:00 pm - 10:00 pm

Warung Mie

Dinner	6:00 pm - 10:00 pm
--------	--------------------

Pool Terrace Café

Lunch	11:00 am - 6:30 pm
-------	--------------------

Terrace Bar and Lounge

Beverage service

Every day	noon - midnight
-----------	-----------------

Cocktail classes

Saturday	3:00 pm - 5:00 pm
----------	-------------------

In-Room Dining

Breakfast	6:00 am - 11:00 am
Lunch	11:00 am - 6:00 pm
Overnight dining	10:00 pm - 6:00 am

DINING

Balmy tropical air and spectacular views over Jimbaran Bay enhance the dining experience at each of the Resort's three open-air restaurants and one lounge/bar. Options range from Indonesian and Balinese specialties to Italian regional fare, as well as family favourites such as pizza and pasta. In-Villa Dining is also available, ideal for impromptu meetings or a quiet dinner. Guests staying at the private residences may take advantage of the services of a Four Seasons chef.

RESTAURANTS

Taman Wantilan

High above the ocean, Taman Wantilan's two open-air pavilions overlook Jimbaran Bay and Bali's distant volcanoes. Cooled by natural breezes, the ambience is enhanced by decorative candelabras and flickering candles. Mingling delectable flavours with the magic of Bali, the restaurant's Italian-influenced fare is enticingly prepared. Taman Wantilan also features a variety of specially created vegetarian dishes.

- Cuisine: Italian
- Outdoor seating: Open-air seating. 102; plus 12 in the private dining pavilion

Warung Mie

Warung Mie introduces diners to authentic local and regional specialties, including its popular *mie* (noodle dishes). Located near the lobby beside an exotic water garden, this informal dinner restaurant exudes an Old World ambience. Up to 20 guests can dine around a hand-carved antique Javanese communal dining table while watching the culinary team at work in the open kitchen that runs along the back wall. Those seeking a more intimate dining experience can settle into one of the smaller tables on the edge of the water garden.

- Cuisine: Indonesian and Balinese
- Outdoor seating: 44, including 22 covered

Pool Terrace Café

The café offers a light menu, served on the deck of the dramatic free-form pool with cliff-like edge, overlooking spectacular views of Jimbaran Bay.

- Outdoor seating: 55

LOUNGES

Terrace Bar and Lounge

Open-air pavilions with unobstructed views of Jimbaran Bay, an intimate courtyard nearby, a warm afternoon in the Island of the Gods and a sundowner at the Terrace complete a perfect visit to Bali.

RECREATION FACILITIES

Groups will feel secluded, pampered and engaged by the diversions offered at Four Seasons. From water sports such as windsurfing, canoeing, sailing, kayaking and snorkelling to blissful relaxation at the Balinese-influenced spa, the choices are almost endless. Other possibilities include a game of tennis, learning the secrets of Asian cuisine at the on-site cooking school, working out in the fitness centre or relaxing beside the infinity pool. For those wishing to experience off-site activities, from golf to surfing, white-water rafting or horseback riding, the Four Seasons Concierge takes care of all the arrangements.

Cooking School

Learn the culinary secrets of Asia at our Cooking School. Open seven days a week, the school offers three self-contained modules that will appeal to novice and experienced cooks alike. In each module, our dedicated school chef works interactively with a maximum of 10 participants.

Housed in its own building, the Cooking School features a stone-paved entry courtyard and garden that welcome you into the kitchen via enormous glass doors.

The air-conditioned kitchen features gleaming state-of-the-art appliances and a large, kidney-shaped, black granite preparation unit with induction hot plates. Specialty equipment to support a range of Asian cooking styles includes a tandoori oven, Asian cook range, noodle boiler, rice/vegetable steamer and duck roaster.

Students sample their creations in the adjacent dining area, on its teak table and chairs of modern Balinese design, or in the shaded entry courtyard. A pantry offers related items for sale.

SPA SERVICES

Spa treatments at Four Seasons Resort Bali at Jimbaran Bay incorporate essences of plants, aromas of healing flowers, elements from the ocean and Balinese and Indonesian herbs and spices – all blended from traditional recipes into modern-day beauty rituals.

Eight luxurious treatment rooms are part of the 10,760-square-foot (1,000-square-metre) facility. Three spa suites feature double massage beds, a Swiss shower and wet and dry body treatment areas; the suites open onto a garden courtyard with a large soaking tub and cascading rinse shower.

- Size: 1,000 m² / 10,760 sq ft

FITNESS FACILITIES

The aerobics studio features a sprung floor and the gym is equipped with state-of-the-art cardiovascular machines, all with TV monitors, as well as free weights for an intensive workout.

- Size: 107 m² / 1,152 sq ft

POOL

With its infinity-edge, the main pool seems to blend with the beautiful bay beyond. Water from the pool cascades over a 7.25-metre (23.78-foot) waterfall into the free-form soaking pool below. Hot and cold whirlpools are located nearby. Refreshments and light meals are available to enjoy on the pool deck.

TENNIS

The Resort's facilities include two synthetic grass courts which are lit for night play. Within easy reach of your Four Seasons guest room or suite are other options for sports or active enjoyment. For further ideas or details, our Concierge is always pleased to advise and assist you.

To help plan a just-right-for-you vacation, you are invited to a private session with one of the Resort's Personalised Paradise Planners. Experts in all things Bali, our planners can assist you in creating the best blend of leisure activities, making suggestions for special occasion dining, tailored spa programmes, island tours, or other on- and off-site sports activities, all packaged into a pre-planned personalised itinerary. Appointments can be made prior to or upon arrival at the Resort.

GOLF

Bali Golf and Country Club (Nusa Dua)

Bali Golf and Country Club, located in the deluxe resort environment of Nusa Dua, provides golf enthusiasts with a world-championship 18-hole golf course in a spectacular seaside setting. The course starts out on a hillside, then the front nine winds through dense tropical vegetation and rock walls, offering panoramic views of the Indian Ocean and volcanoes in the distance.

Nirwana Bali Golf Club (Tanah Lot)

Nirwana Bali Golf Club is the island's first members' club. With only 500 memberships available worldwide, Nirwana Bali Golf Club is dedicated to those who truly appreciate the best that the game has to offer. Designed by Greg Norman and set against a scenic ocean backdrop, the golf course has been built with an unwavering sensitivity to every environmental concern. It is a visual masterpiece of dramatic white sand bunkers, fresh water creeks, lush green grasses and trees and surrounding rice terraces.

Bali Handara Golf Course (Bedugul)

Bali Handara Golf Course is considered one of the most beautiful golf courses in the world. The scenery is spectacular with trees and colourful blooms lining the fairways and greens. The course was designed by Peter Thompson of Thompson, Wolveridge and Fream. Bali Handara is located 1,142 metres (1,249 yards) above sea level where temperatures are cool, comfortable and constant, hovering between 16-20°C (60-68°F). Facilities include a clubhouse, pro shop, fitness centre, sauna and restaurant.

LEISURE ACTIVITIES

On-site recreation

The following water-sports equipment are available to guests for complimentary use:

- Hobie cats
- Windsurfers
- Ocean kayaks
- Boogie boards
- Snorkelling equipment
- Aqua shoes

Off-site recreation

Other water sports and activities are available on the island. The Concierge would be

happy to provide more information or recommend organisers specialising in them.

- White-water rafting
- Surfing
- Jet skiing
- Scuba diving
- Parasailing
- Fishing
- Dolphin watching
- Sailing/cruising
- Trekking/hiking
- Horseback riding

SURFING

Surfing instruction

An accredited *Tropicsurf* instructor is available to assist you with all your surfing needs.

Surfing excursions

From April to October, Bali is blessed with some of the best surfing conditions in the world. Four Seasons Resort Bali at Jimbaran Bay is located only a short boat or car ride from some of the best surf breaks to be found.

Our top surf sites are:

Intermediate

Toro Toro – a mellow and fun right-hander visible from the Resort at the northern end of Jimbaran Bay. Take a short boat trip from the beach in front of the Resort and enjoy gliding across Bali's famous green waves while airplanes take off and land just overhead. This wave is suitable for surfers of all abilities and is one of the most consistent and less crowded waves on the island.

Padang Rights – another mellow and fun reefbreak located a short car ride from the Resort and in the same bay as the world-famous Padang Padang surf site. This is one of the most beautiful beaches on Bali, and the wave is fun and safe for beginners and intermediates, ending in a deep turquoise channel for added safety.

Moby Dick's – a mellow and semi-secret left-hand wave located a short boat ride from the Resort. This wave is suited to intermediate surfers who wish to surf without the crowds, except for a few local children who frequent the place. A surf trip here is one of the most unique surfing experiences on the island of Bali.

Advanced

Balangan – a long and fast wave that breaks at two sections and offers long rides when the tides and swell direction are just right. This break is best accessed by a short boat transfer from the Resort to avoid walking out from the beach over the sharp coral reef. Balangan is a great location for a Balinese surfing experience for high-intermediates and beyond.

Other locations that can be visited by vehicle transfer include Uluwatu, Padang Padang, Impossibles and Bingin. Please ask the *Tropicsurf* Resort surf guide for further information.

There are also a variety of surfing excursions to lesser known breaks, and access to good waves is available across the island year-round. Wave riding with *Tropicsurf* takes all the guesswork out of your surfing and ensures you make the most of your surfing time in Bali.

INCENTIVE ACTIVITIES

Sample itinerary

Day 1	<p>Arrival at Resort</p> <ul style="list-style-type: none">• From the airport, your group is transported to the Resort by coach and Jukung boat, given a warm Balinese welcome and escorted to their villas by staff dressed in traditional costumes.• Enjoy welcome cocktails in the open bar at the lower swimming pool, with entertainment by a violin/saxophone jazz duo or traditional music and dance. <p>Evening</p> <p>Savour a night market dinner of authentic Balinese food around the pool or in the courtyard of Taman Wantilan restaurant, be entertained by demonstrations of a Jimbaran villager's age-old skills – basket weaving, wood carving and batik. For an additional fee, a Batak or Keroncong band will perform traditional Balinese music and dance.</p>
Day 2	<p>Day</p> <p>Enjoy an à la carte breakfast at Taman Wantilan restaurant or in your villas. If desired, buffet breakfast at PJ's restaurant on the beach can be arranged for the group. Afterwards, experience the Resort's exclusive facilities or go on an adventure further afield.</p> <ul style="list-style-type: none">• Pamper yourself with a Balinese massage in The Spa or in your villa.• Work out in our state-of-the-art aerobics studio or challenge our Resort Pro to a game of tennis.• Explore Bali on a private tour or play a game of golf. <p>Evening</p> <ul style="list-style-type: none">• The group meets for cocktails and then retreats to the privacy of their villas.• A relaxed candlelight dinner for two is served in the privacy of each couple's villa, on an elegantly set table decorated with a floral arrangement – a four-course meal and a bottle of Resort-selected red or white wine is served; musical entertainment by a strolling Batak trio can be provided.
Day 3	<p>Day</p> <p>Enjoy an à la carte breakfast at Taman Wantilan restaurant or in your villas. If desired, buffet breakfast at PJ's restaurant on the beach can be arranged for the group. Afterwards, explore the many delights of this enchanted island.</p> <ul style="list-style-type: none">• Tour Ubud, the artistic heart of Bali, which features art galleries, museums and shops for antiques, local handicrafts, furniture and fabrics. <p>Evening</p> <ul style="list-style-type: none">• Spend an evening at leisure dining in one of the Resort's restaurants.• Experience night meditation in Uluwatu temple, one of Bali's grandest and oldest temples.

Day 4

Day

Enjoy an à la carte breakfast at Taman Wantilan restaurant or in your villas. If desired, buffet breakfast at PJ's restaurant on the beach can be arranged for the group. Afterwards, experience the Resort's varied facilities or venture on a shopping excursion.

- Learn the secrets of Balinese cuisine from the Resort's expert chefs at our Cooking School.
- Roam the lively local markets for artefacts, handmade jewellery and batik items.

Evening

Cocktails and a formal farewell dinner will be served at one of the Resort's private estates. The group will be welcomed by jazz music and served drinks, and a poolside dinner featuring western cuisine will follow. A live band performs until midnight.

Day 5

Morning

Enjoy an à la carte breakfast at Taman Wantilan restaurant or in your villas. If desired, buffet breakfast at PJ's restaurant on the beach can be arranged for the group.

- Depending on departure time, activities may be organised for the morning.
 - Staff will line the driveway to bid farewell as your group boards the coach and departs for the airport.
-

Rooms	Dimensions		Size		Height		Classroom	Hollow square	U-shape	Theatre	Reception	Banquet rounds	Conference/ boardroom
	(m)	(ft)	(m ²)	(sq ft)	(m)	(ft)							
- Jepun Sari	18 x 11	59 x 36	198	2,131	4	13	90	64	49	160	200	100	50
- Pre-Function Area	10.4 x 6.1	34 x 20	55	590	4	13	-	-	-	-	40	-	-