



Quick Reference Guide

Last updated May 3, 2012 | For additional information please contact the hotel directly

Four Seasons Hotel Jakarta
Jalan H.R. Rasuna Said, Jakarta 12920, Indonesia
Tel 62.21.252.3456 | Fax 62.21.252.4480 | Res 62.21.252.5353

www.fourseasons.com/jakarta



Jalan H.R. Rasuna Said
Jakarta 12920, Indonesia
Tel 62.21.252.3456
Fax 62.21.252.4480
Res 62.21.252.5353

AIRPORT

- Soekarno-Hatta International Airport (CGK): 45 to 60 minutes (35 kilometres/22 miles)

TABLE OF CONTENTS

- 2 *Introduction*
- 4 *Destination*
- 8 *Conference Facilities*
- 12 *Guest rooms, Suites and Private Residences*
- 16 *Dining*
- 18 *Recreational Facilities*
- 20 *Appendix: Conference Chart*

The dynamic capital of the Southeast Asian archipelago of Indonesia, Jakarta encompasses diverse cultures and a rich artistic heritage. In the heart of the city's main business district, known as the Golden Triangle, Four Seasons provides a secluded sanctuary within tropical gardens.



An oasis of calm in the heart of Jakarta's thriving business community, Four Seasons Hotel Jakarta sits within 2 hectares (6 acres) of beautifully landscaped grounds. Modern architecture enfolds light-filled interiors accented by Indonesian antiques and contemporary art to create a sense of ultra-spacious living. Every one of the 320 oversized guest rooms and suites features a private balcony. On the 17th floor, premium privileges are offered in the welcoming comfort of the Executive Club Lounge.

With nine options for dining and cocktails, culinary delights range from exquisite Cantonese fare to the best of Indonesian, Asian and international cuisine. Extensive function space offers grandeur and flexibility for every occasion. Resort-style recreation includes rejuvenation in the two-level spa, working out in the 24-hour gym, relaxing by the large outdoor pool or enjoying a game of tennis. Centrally located amid futuristic skyscrapers, a stay at Four Seasons enriches the Jakarta experience.

TRANSPORTATION

Soekarno-Hatta International Airport is the central transportation hub and main gateway to Indonesia. It is served by major international airlines, including Qantas, Lufthansa, Emirates and Singapore Airlines, as well as several domestic airlines.

Services provided by the Hotel

Four Seasons Hotel Jakarta has a fleet of Mercedes-Benz E 200 compressor series available for airport transfers, each accommodating a maximum of three guests; for parties of four to five guests, a luxurious Toyota Alphard is available. Hotel representatives will greet guests at the designated arrival gate bearing Four Seasons name tags and signage. The limousines are also available for chauffeured local transportation. A fee applies to both airport service and local chauffeur service; please contact the Concierge for details.

WEATHER CHART

Month	°C		°F	
	Highs/Lows	Highs/Lows	Highs/Lows	Highs/Lows
January	28	/ 23	83	/ 75
February	29	/ 23	85	/ 75
March	30	/ 23	86	/ 75
April	31	/ 24	88	/ 76
May	31	/ 24	88	/ 76
June	31	/ 23	88	/ 75
July	31	/ 23	88	/ 74
August	31	/ 23	88	/ 74
September	31	/ 23	89	/ 75
October	31	/ 24	89	/ 76
November	31	/ 24	88	/ 76
December	30	/ 23	86	/ 75

DESTINATION

Modern, dynamic, expanding ... the Indonesian capital of Jakarta sprawls over 25 square kilometres (16 square miles) on the island of Java. Indonesia is comprised of thousands of islands spread between the Pacific and Indian oceans. Originally part of a Hindu kingdom, more than 300 ethnic groups account for Indonesia's linguistic, cultural and religious diversity, with Jakarta being the melting pot for each of these groups. One of Southeast Asia's largest cities, Jakarta's estimated population is over nine million people – and more than 23 million live within its metropolitan area.

Fanning out from around Merdeka (Freedom) Square, which contains the gold-tipped landmark of the National Monument, Jakarta provides a powerful contrast between Western-style skyscrapers, modern urban lifestyles and traditional Indonesian culture, offering visitors fascinating history, excellent shopping and exciting nightlife. With its strategic location, Jakarta is also the principal gateway to discovering the rest of Indonesia.

Four Seasons Hotel Jakarta is conveniently located in the heart of the business district, and the surrounding areas offer a wide range of activities for your discovery.

Please note that passports must be valid for a minimum of six months from the date of arrival for entry into Indonesia. Please check with your local Indonesian government representative for visa requirements.

WEATHER

Indonesia enjoys a tropical climate throughout the year. The official wet season runs from October to April and is marked by brief but heavy rainstorms. The dry season is from May to September.

LOCAL ATTRACTIONS AND ACTIVITIES

At Four Seasons, you enjoy a unique vantage point from which to explore the sights, sounds and experiences around you. We hope the highlights of local attractions below help simplify your planning. Please let us know how else we can assist you.

Within a 10-minute drive of the Hotel

Grand Indonesia:

- Grand Indonesia is a modern mall offering high-end retail brands in a stylish setting. A central location for shopping and entertainment, Grand Indonesia also offers a cross-cultural dining experience.

Plaza Indonesia:

- This is a modern shopping mall connected to an entertainment arcade.

Within a 15-minute drive of the Hotel

Plaza Senayan:

- Plaza Senayan is an extensive, modern mall, with everything from traditional wares to imported designer labels. It also includes a cinema, a bowling arcade and a food court.

National Monument:

- Jakarta's most famous landmark is located in the Medan Merdeka (Freedom Square), one of the largest city squares in the world. Known to locals as Monas, the monument stands 132 metres (433 feet) tall and is topped with 35 kilograms (77 pounds) of gold. There is an elevator to the top where the city observation platform offers a spectacular view of the cityscape. The basement houses a museum of Indonesia's history.

National Museum :

- The National Museum is located on the west side of Merdeka Square and can be identified by the bronze elephant in front – a gift from Thailand's King of Siam in 1871. The museum provides an excellent overview of ancient Indonesian culture, offering the most complete collection of Indonesian relics and ethnic artwork in the country. There are five sections: Hindu and Buddhist stone carvings from the 7th to 15th centuries; an exhibit of prehistoric skulls, weapons and cooking utensils that date back 4,000 years; Indonesian ethnic crafts; a treasure room with gold trinkets, jewelled weapons, and Buddhist statues; and one of the largest collections of Chinese ceramics outside China. Complimentary tours are given in various languages.

Djody:

- Djody is an antique shop specialising in ancient Chinese ceramics, furniture, accessories and antique clothing.

Within a 20-minute drive of the Hotel

Inggil Gallery:

- Inggil is an art gallery featuring paintings and sculptures.

Jalan Surabaya :

- This street, known for its flea market, is located in one of the city's nicer residential areas. Stalls offer a wide range of goods, some of them antiques, including ornate lamps, Chinese porcelain, old coins, brassware and handicrafts.

Alex and Caecil Papadimitriou:

- This gallery features antiques, furniture, textiles, paintings and other art objects.

Within a 25-minute drive of the Hotel

Taman Ismail Marzuki (Jakarta Art Centre):

- The focal point of cultural activities in Jakarta, the Jakarta Art Centre is said to be the largest of its kind in Southeast Asia. It consists of exhibition halls, theatres, an academy of arts, an archives building and a planetarium. A monthly programme of events includes exhibitions, plays, dance performances, folk art and drama from the different regions of Indonesia. The shadow puppet (wayang) performances are always a favourite among tourists.

Jakarta Convention Center:

- This is an exhibition centre where cultural arts, weddings and musical performances take place.

Within a 30-minute drive of the Hotel

Duta Fine Arts:

- Duta Fine Arts is an art gallery that also features books on art, sculpture and framing.

Glodok, Kota:

- The centre of Jakarta's Chinatown, this site boasts old Chinese buildings and temples – not to mention Dutch warehouses. A great shopping spot for those who enjoy bargains.

Fatahillah Museum:

- The museum provides a full history of Jakarta. The building has been used in the past as a law court, a prison and an administrative centre for the vast trading empire of the Dutch.

Gedung Kesenian Jakarta:

- This neo-Renaissance restored structure presents some of the city's best performances of music, dance and theatre.

Textile Museum :

- This museum displays a rich collection of Indonesian textiles from all over the country, from handwoven cotton to silk and batiks. There is also a small workshop where batik is demonstrated.

The Puppet Museum (Museum Wayang):

- Known as The Puppet Museum, Museum Wayang displays the finest puppets from all over Indonesia and across Southeast Asia. The wooden and leather puppets (known as wayang kulit) represent the finest craftsmanship in this particular form of traditional theatre. The museum offers performances of shortened versions of the wayang kulit every Sunday morning.

Within a 40-minute drive of the Hotel

Taman Ismail Marzuki :

- Said to be the largest of its kind in Southeast Asia, this massive arts complex contains exhibition halls, theatres, an arts college, art gallery, archive building and a planetarium. It has become a central showcase for international performing arts in Indonesia, with performances almost every night that include traditional and modern dance, local and foreign film festivals, poetry readings and every style of music.

Within a 1.5-hour drive of the Hotel

Botanical Garden:

- The Botanical Garden features both imported and indigenous flora.

Within a 2-hour drive of the Hotel

Puncak:

- Puncak is surrounded by beautiful mountains where you can visit tea plantations. Inside Puncak is the Indonesia Safari Park – a drive-through safari park offering treats for children of all ages.

Within a 3.5-hour drive of the Hotel

Tangkuban Perahu:

- Surrounded by gigantic collapsed volcanoes, Sudanese legend describes this place as an overturned boat.

Within a 2-hour boat ride of the Hotel

Thousand Islands (Pulau):

- Pulau's five large islands have thousands of smaller ones dotting the sea. Recreational activities and water sports are available.

Within a 50-minute plane ride of the Hotel

Borobudur Temple, Yogyakarta:

- The eighth century temple of Borobudur is one of the largest Buddhist monuments in the world.

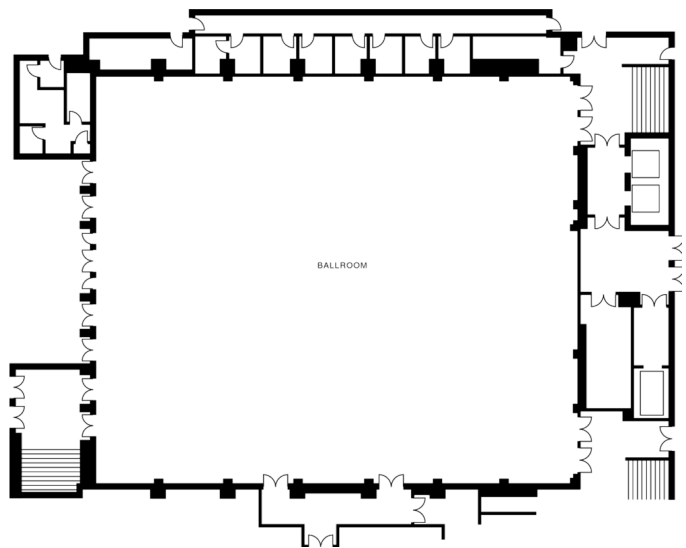
CONFERENCE FACILITIES OVERVIEW

Total Space	2,598 m ² 27,964 sq.ft.
Largest Ballroom	980 m ² 10,548 sq.ft.
Meet and Feed (max. capacity)	500
Breakouts	10
Banquet (max. capacity)	500
Outdoor Banquet (max. capacity)	300
Private Dining (max. capacity)	12

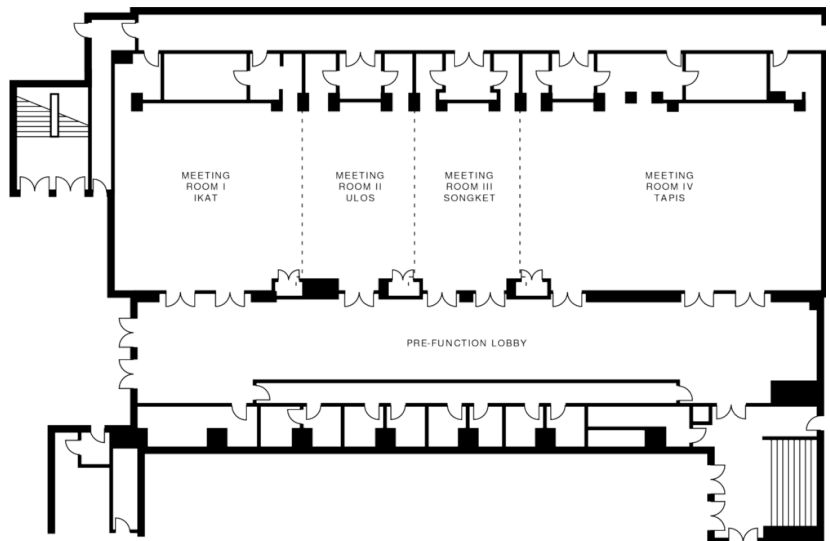
CONFERENCE FACILITIES

Four Seasons Hotel Jakarta offers unparalleled function space, with high-tech facilities that invite imaginative themed events. The expansive 980-square-metre (10,548-square-foot) Ballroom can host up to 1,500 for a reception. Unique among all function facilities in Asia, a private elevator links the Ballroom with the Presidential Suite to provide enhanced security for visiting dignitaries, celebrities or royalty. With an atrium ceiling, garden views and an outdoor terrace, the split-level Garden Terrace is perfect for receptions for up to 300 guests. Twelve dedicated meeting rooms – four opening to a garden patio – offer space for board meetings or smaller conferences, including the intimate Palm Court rooms, which offer natural daylight and a residential ambience. Experienced on-site Four Seasons event coordinators ensure always-exquisite cuisine and service.

Ballroom



Lobby level



TECHNICAL ASSISTANCE

State-of-the-art audiovisual equipment includes:

- Overhead projectors
- LCD projectors
- Screens
- Microphones (wireless and clip-on)
- Mixers, amplifiers
- Audio cassette players/recorders
- VHS video cassette players
- DVD/VCD players
- Televisions
- Laser pointers
- Wired or wireless Internet access in meeting rooms

MUSIC AND ENTERTAINMENT

Our Conference Managers will be happy to assist with setting up any type of music or entertainment for your meeting or event.

RECEIVING AND MAINTENANCE

All packages should be addressed to the Conference Manager. They will be stored in the Conference Manager's office or with the Concierge.

Maintenance

The Engineering department is available 24 hours a day for general assistance with lighting, room temperature control and minor repairs.

BUSINESS SERVICES

Around the clock, Four Seasons can assist you with business, entertainment, Internet access, and secretarial services through the Business Centre.

- Business equipment
- Computers
- Secretarial service
- Translation and interpretation service
- Wired or wireless Internet access in meeting rooms

SPOUSE PROGRAMMES

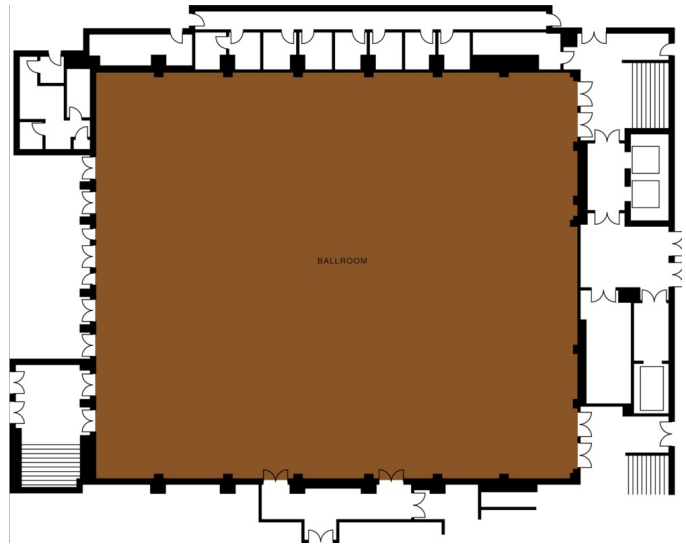
With advance notice, the Concierge would be pleased to arrange city tours or shopping excursions.

THE BALLROOM

Dimensions	29.0 x 33.8 m 95.1 x 110.8 ft
Size	980 m ² 10,548 sq.ft.
Height	5.5 m 18 ft

Capacities

Classroom	500
Theatre	800
Reception	1,500
Banquet Rounds	500

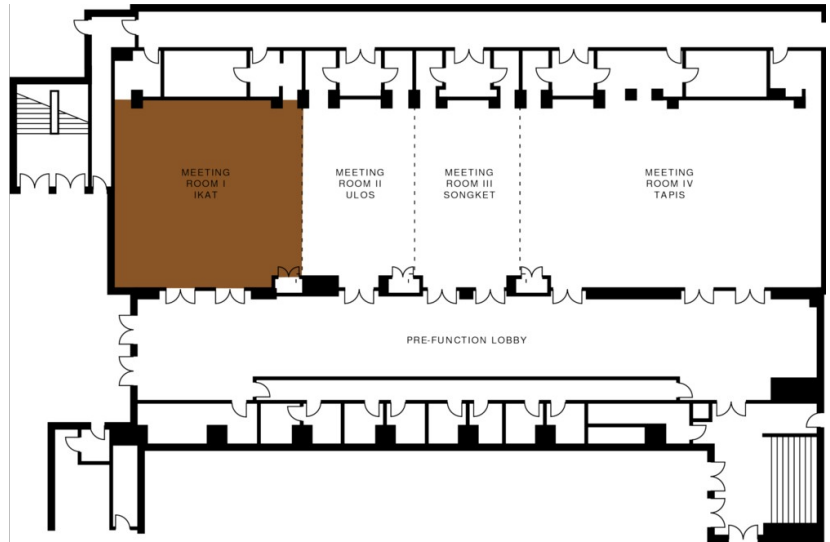


IKAT ROOM

Dimensions	11.9 x 10.9 m 39 x 35.8 ft
Size	130 m ² 1,399 sq.ft.
Height	3.1 m 10.1 ft

Capacities

Classroom	60
Hollow square	40
U Shape	36
Theatre	80
Reception	80
Banquet Rounds	60

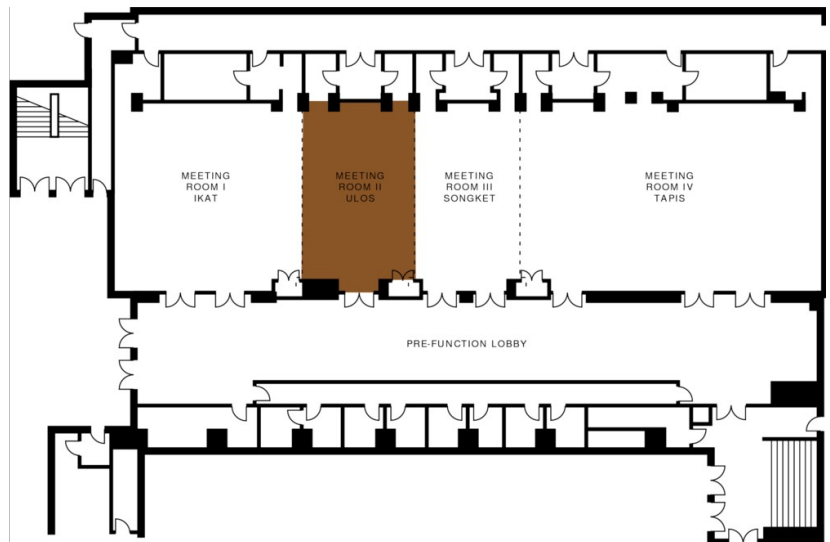


ULOS ROOM

Dimensions	6.6 x 10.9 m 21.7 x 35.8 ft
Size	72 m ² 775 sq.ft.
Height	3.1 m 10.1 ft

Capacities

Classroom	24
Hollow square	26
U Shape	22
Theatre	40
Reception	40
Banquet Rounds	40

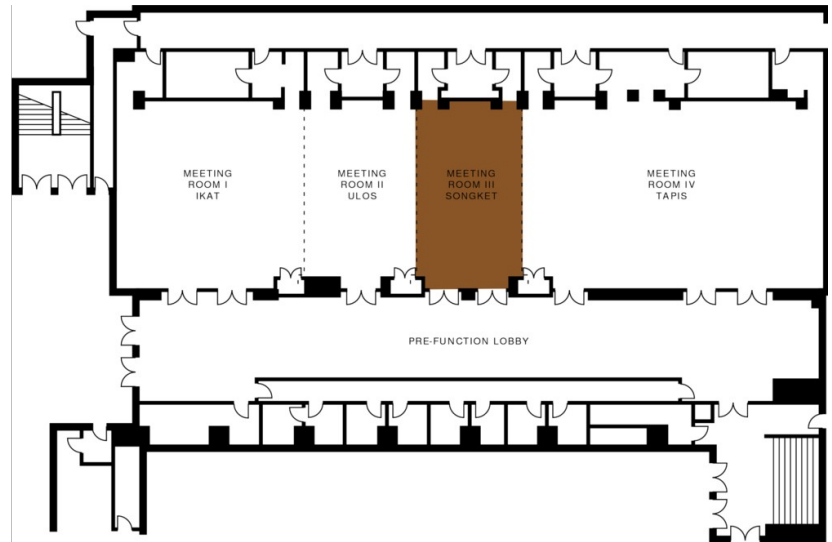


SONGKET ROOM

Dimensions	6.6 x 10.9 m
	21.7 x 35.8 ft
Size	72 m ²
	775 sq.ft.
Height	3.1 m
	10.1 ft

Capacities

Classroom	24
Hollow square	26
U Shape	22
Theatre	40
Reception	40
Banquet Rounds	40

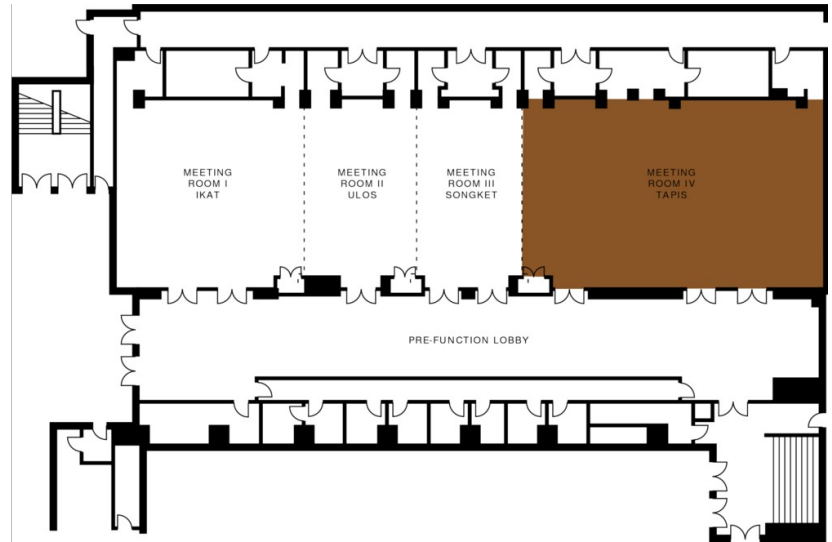


TAPIS ROOM

Dimensions	18.5 x 10.9 m
	60.7 x 35.8 ft
Size	202 m ²
	2,174 sq.ft.
Height	3.1 m
	10.1 ft

Capacities

Classroom	100
Hollow square	52
U Shape	38
Theatre	150
Reception	150
Banquet Rounds	120
Boardroom	40



GUEST ROOMS, SUITES AND PRIVATE RESIDENCES OVERVIEW

Located on floors 2 through 17, Four Seasons Hotel Jakarta offers 320 guest rooms that are among the most expansive in the city. Every room has its own private balcony opening to panoramic views of downtown or the Hotel's garden. Epitomising stylish residential comfort, all accommodations feature Indonesian fabrics and furnishings in soft earth tones, as well as indigenous artwork.

A large executive desk, multi-line telephones with voice mail, high-speed wired or wireless Internet access and an entertainment centre with satellite television ensure complete convenience and accessibility for business travellers. The ensuite marble bathroom features a deep-soaking tub, separate glass-enclosed shower and secluded WC with telephone.

Executive Club

Available for a nominal fee, all guests can enjoy enhanced privileges at the Executive Club Lounge.

Room Category	#	Beds	Size (m ²)	View (sq ft)
- Premier Room	28	1 King or 2 twin	82 – 130	882 – 1,400 Jalan Rasuna Said, Jalan Sudirman or the garden
- Corner Deluxe Room	41	1 King	60 – 65	645 – 700 Jalan Rasuna Said, Jalan Sudirman or the garden
- Deluxe Room	249	1 King or 2 twin	55 – 60	592 – 645 Jalan Rasuna Said, Jalan Sudirman or the garden
- Superior Room	33	1 King or 2 twin	55 – 60	592 – 645 Jalan Rasuna Said, Jalan Sudirman or the garden
- Four Seasons Executive Suite	5	1 King	125 – 136	1,345 – 1,453 Hotel's pool and garden
- Presidential Suite	1	2 King	550	5,920 Hotel's pool and garden
- Ambassador Suite	1	1 King and 2 twin	231	2,368 Jalan Rasuna Said
- Luxury Suite	3	1 King	182	1,959 Jalan Rasuna Said

Guest Room Overview

Starting at 55 square metres (592 square feet), accommodations at Four Seasons are among Jakarta's most spacious, enhancing both productivity and relaxation. Superior Rooms and Deluxe Rooms are similar in size, amenities and views, with the Deluxe Rooms located on higher floors. The larger Premier Rooms feature a spacious living area and two balconies. In Four Seasons Executive Suites, the bedroom is separated from the living room for added privacy. Features include a large walk-in closet and a guest powder room.

Suites Overview

On the 16th and 17th floors, Luxury Suites each have a separate living room, a dining area for four guests, a refrigerated private bar and lofty views over the city. The two-bedroom Ambassador Suite encompasses a separate living room, a dining area for four guests, a kitchenette and a guest powder room. The magnificent Presidential Suite offers the ultimate in elegance and privacy within its sixth-floor location. Its features include 360-

degree panoramic views of the pool and garden from private balconies, two bedrooms (with sauna and whirlpool in the master bathroom), a separate living area, a private dining room, a fully equipped pantry, private butler's quarters with separate elevator, a study and two terraced gardens. A private elevator offers access to the basement car park and the Ballroom.

DELUXE ROOM

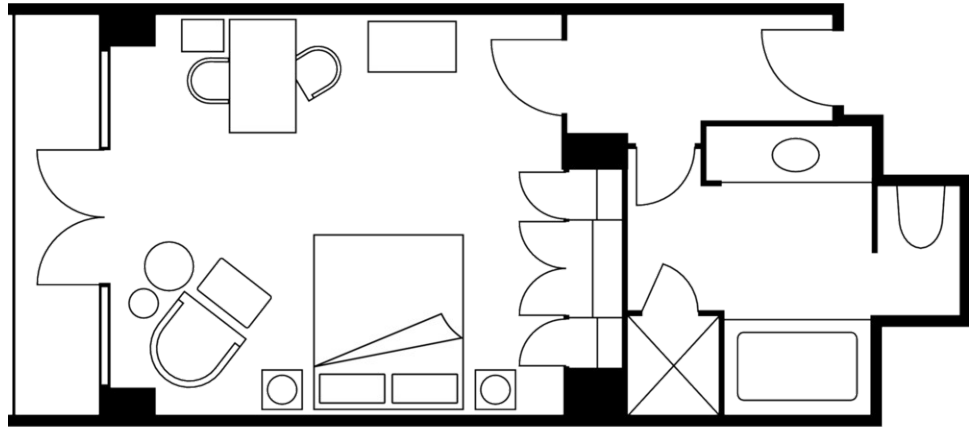
Number 249
Beds King or two twin beds
Size 55 – 60 m²
592 – 645 sq ft

Location

6th to 17th floors

View

Jalan Rasuna Said, Jalan Sudirman or
the garden



SUPERIOR ROOM

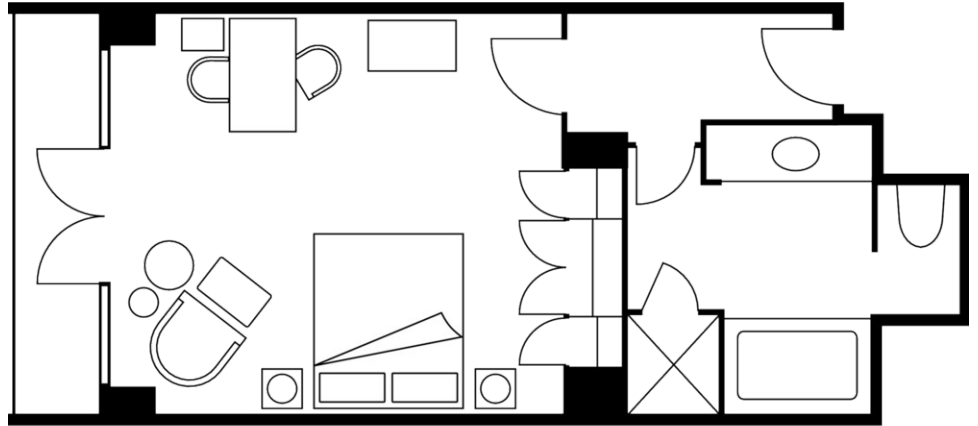
Number 33
Beds King or two twin beds
Size 55 – 60 m²
592 – 645 sq ft

Location

2nd to 5th floors

View

Jalan Rasuna Said, Jalan Sudirman or
the garden



AMENITIES

- Alarm clock
- All news cable network
- Complimentary newspaper
- Down duvets
- Down pillows
- Fax machine on request
- Hair dryer
- Hypo-allergenic foam pillows on request
- In-room safe
- Iron and ironing board on request
- Make-up mirror
- Multi-line telephone(s) with voicemail
- Refrigerated private bar
- Satellite television
- Tea/coffee maker
- Thick terry bathrobes
- Twice-daily housekeeping service
- Wired or wireless Internet access

GUEST SERVICES

- 24-hour In-Room Dining
- 24-hour laundry/dry-cleaning/pressing
- 24-hour multilingual Concierge
- Airport transfers
- Car rental desk
- Complimentary overnight shoeshine
- Currency exchange service
- Doctor or nurse on call 24 hours
- Non-smoking rooms
- One-hour pressing
- Restaurant
- Salon services
- Self-parking
- Services and amenities for younger guests
- Umbrellas
- Valet parking

VIP GIFTS AND WELCOME AMENITY

Special arrangements can be made for clients to purchase welcome gifts for their VIP guests at our shop, such as batik or wayang (Indonesian traditional handicraft).

DINING HOURS OF OPERATION

The Steak House

Dinner

Every day 6:30 pm - 11:00 pm

Lai Ching

Lunch

Monday to Friday noon - 3:00 pm

Saturday, Sunday and public holidays 11:30 am - 3:00 pm

Dinner

Every day 6:30 pm - 11:00 pm

Seasons Café

Every day 6:00 am - 11:00 pm

Sunday brunch 11:30 am - 3:00 pm

The Deli

Monday to Friday 7:00 am - 9:00 pm

Saturday, Sunday and public holidays 8:00 am - 9:00 pm

Poolside

Every day 6:00 am - 10:30 pm

The Bar

Sunday to Thursday 3:00 pm - 1:00 am

Friday and Saturday 3:00 pm - 2:00 am

Complimentary snack

Every day 3:00 pm - 8:00 pm

Lobby Lounge

Every day 6:00 am - midnight

Afternoon tea buffet 2:30 pm - 6:00 pm

(Monday to Friday)

The Cellar

Every day 10:00 am - midnight

The Library

Every day 10:00 am - midnight

In-Room Dining

Breakfast 5:00 am - 11:00 am

All-day dining 11:00 am - 11:00 pm

Late-night dining 11:00 pm - 6:00 am

DINING

The nine restaurants and lounges of Four Seasons Hotel Jakarta showcase culinary delights from around the world – from authentic Chinese cuisine in Lai Ching to meticulously prepared steaks and seafood in The Steak House and Indonesian, Asian and international fare in Seasons Café. Four private dining rooms in Lai Ching provide intimate dining alternatives for small, exclusive groups.

RESTAURANTS

The Steak House

The Steak House is an ideal setting for business or social gatherings. The chic contemporary steak house décor, showcasing an intriguing piece of Australian Aboriginal artwork, sets this restaurant apart from all others. The menu offers a variety of prime and Wagyu beef presentations, all prepared on our signature wood-burning grill. The wine list, offering wines from around the world, has been selected by our master sommelier.

- Indoor seating: 84

Lai Ching

A contemporary dining scene with garden views, Lai Ching is open for lunch and dinner, serving authentic Cantonese cuisine and a creative dim sum menu. Four private dining rooms offer the perfect settings for business entertaining or an intimate social event.

- Cuisine: Cantonese
- Indoor seating: 164 – three private rooms seat 12 and one private room seats six

Seasons Café

Seasons Café offers all-day dining in a secluded garden setting overlooking the pool and gardens. The finest regional ingredients are used to create distinctive cuisine, with local favourites playing a leading role. Seasons Café hosts a breakfast, lunch and dinner buffet, but à la carte dining – which includes a selection of salads, sandwiches, pastas, grilled meats and fish and local specialties – is also available.

The Sunday brunch is a veritable feast, showcasing signature dishes from around the world.

- Cuisine: Indonesian, Asian and international
- Indoor seating: 125
- Outdoor seating: 40

The Deli

The Deli at Four Seasons Hotel Jakarta offers an array of freshly baked pastries, breads and desserts. This hidden sanctuary is ideal for a morning coffee, a light lunch or a gourmet dessert. We also deliver.

- Indoor seating: 54

Poolside

This resort-like oasis is a great escape from the hustle and bustle of the city. The menu includes gourmet sandwiches, crisp salads and tropical fruits. A selection of soft drinks, fresh fruit juices and flavoured ice tea is also available.

- Outdoor seating: Seats 28 poolside; seats 24 under covered veranda.

LOUNGES

The Bar

Soft lighting, deep sofas and live jazz create the ideal setting for relaxing after a long day in the city. The Bar's mixologists continually renew the cocktail menu with fresh inventions featuring seasonal fruits.

- Indoor seating: 76

Lobby Lounge

The Lobby Lounge's atrium setting is the perfect place to host an informal meeting or relax over a morning coffee or an afternoon tea. Guests can also enjoy live piano music while having a light meal.

The Cellar

The Cellar is the place to be for a drink, great music and a relaxed atmosphere. The menu offers a vast selection of wines from around the world, liquor and cigars for your enjoyment and tapas for a light meal. Reminiscent of a traditional wine cellar, it's the perfect spot for enjoying drinks and small plates with friends or colleagues.

The Library

Antique armchairs and walls lined with books from all over the globe create a cozy, rustic ambience in The Library. Located across from The Cellar, The Library will make you feel at home. The menu offers delightful appetisers as well as top wines and a wide variety of single malt Scotch whiskies.

RECREATION FACILITIES

Like a lush tropical resort in the heart of the city, the recreational opportunities offered by Four Seasons are enormously enticing. Treatments in the stunningly beautiful spa rejuvenate the body and revive the spirit. Workouts in the 24-hour gym accommodate travellers from every time zone. Relaxation is inevitable on the spacious sundeck, with its comfortable chaises longues and cabanas around the vast outdoor pool. And two floodlit tennis courts allow play in the cool of the evening. For those wishing a game of golf on one of Jakarta's outstanding courses, the Four Seasons Concierge takes care of all the arrangements.

Executive Club

The Executive Club on the 17th floor offers guests 24-hour personalised service in an atmosphere of comfort and familiarity. For a nominal fee, guests can enjoy added privileges at the Executive Club Lounge which include:

- 24-hour use of the exclusive Club Lounge, with Concierge service
- Express check-in and check-out; late check-out (subject to availability)
- Buffet or à la carte breakfast
- 24-hour courtesy bar
- All-day tea and coffee services with snacks and local delicacies
- Evening cocktails and hors d'oeuvres
- Complimentary garment pressing
- Complimentary local calls and high-speed Internet access using the Executive Club's workstation and in-house computer
- Complimentary use of Executive Club meeting rooms for two hours (subject to availability)
- 24-hour Business Centre with use of business equipment
- Separate library offering a choice of novels, business and lifestyle magazines, dictionaries and corporate directories

SPA SERVICES

Spanning two levels, the Spa at Four Seasons Hotel Jakarta features steam rooms, a sauna, yoga room and juice bar, and six private treatment rooms with four deep soaking tubs. A staircase suspended over a pond, a water wall and exquisite artwork combine to make the Spa a perfect spot to rejuvenate the body, refresh the mind, revive the spirit and restore the senses.

- Size: 929 m² / 10,000 sq ft
- Number of treatment rooms: 6

FITNESS FACILITIES

The Gym at Four Seasons Hotel Jakarta features the latest in exercise equipment with separate men's and women's private locker and shower rooms. Personal fitness instructors are available to guide you through your training programme and help you make the most of your workout. Separate men's and women's steam rooms, whirlpools, cold plunge pools, and a yoga movement room are available at the spa.

- Size: 312.5 m² / 3,364 sq ft

POOL

The Hotel's stunning 25-metre (82-foot) rectangular outdoor pool, a nearby hot whirlpool and a cold plunge pool, form the centre-piece of the relaxing pool promenade

area.

TENNIS

Floodlighting allows for night play on the Hotel's synthetic grass and hard tennis courts. A tennis professional is available upon request to provide private lessons at all levels. Fees apply for tennis lessons, assistance and practice partners.

Within easy reach of your Four Seasons guest room or suite are other options for sports or active enjoyment. In areas around Jakarta, there are outstanding golf courses designed by renowned golf course designers, with spectacular views and facilities. Travel time vary from 30 minutes to 3 hours and selected courses are available to non-members during weekdays only. For further details, our Concierge is always pleased to advise and assist you.

GOLF

Imperial Klub Golf

Located in the new town development of Lippo Karawaci, 25 minutes from downtown Jakarta, this 18-hole championship golf course combines the ultimate golfing experience with breathtaking surroundings in a friendly resort environment. The spectacular clubhouse offers a complete range of facilities including, all-day dining, a golf view restaurant, meeting rooms and massage services.

Pondok Indah Golf and Country Club

The Pondok Indah golf course is reminiscent of St. Andrews in Scotland, the home of the game of golf. The course layout is challenging and takes advantage of the meandering tributaries of the Grogol River.

Klub Golf Cengkareng

This beautiful 18-hole golf course, designed by Walter Raleigh Stewart is a friendly, but challenging layout of international standards. Adding to a truly memorable golfing experience is spectacular dining, banquet facilities, massage, locker rooms and VIP room.

www.fourseasons.com/jakarta

Rooms	Dimensions		Size (m ²)	(sq ft)	Height		Classroom	Hollow square	U-shape	Theatre	Reception	Banquet rounds	Conference/ boardroom
	(m)	(ft)			(m)	(ft)							
- The Ballroom	29.0 x 33.8	95.1 x 110.8	980	10,548	5.5	18	500	-	-	800	1,500	500	-
- The Ballroom Pre-Function Area	22.5 x 13.2	73.8 x 43.3	297	3,196	3.8	12.6	-	-	-	-	400	-	-
- Tenun Room	43.6 x 10.9	143.1 x 35.8	476	5,123	2.8	9.3	208	144	118	310	310	260	112
- Ikat Room	11.9 x 10.9	39 x 35.8	130	1,399	3.1	10.1	60	40	36	80	80	60	28
- Ulos Room	6.6 x 10.9	21.7 x 35.8	72	775	3.1	10.1	24	26	22	40	40	40	22
- Songket Room	6.6 x 10.9	21.7 x 35.8	72	775	3.1	10.1	24	26	22	40	40	40	22
- Tapis Room	18.5 x 10.9	60.7 x 35.8	202	2,174	3.1	10.1	100	52	38	150	150	120	40
- Garden Terrace	16.7 x 18.7	54.8 x 61.4	314	3,380	3	9.8	40	32	24	100	300	120	20
- Boardroom	9.5 x 9	31.2 x 29.5	86	926	2.6	8.5	24	26	22	40	50	40	22
- Boardroom Lounge	4.5 x 9	14.8 x 29.5	41	441	2.6	8.5	-	-	-	-	-	-	-
- Palm Court I	5 x 4	16.4 x 13.1	20	215	2.7	9.7	-	-	-	-	-	-	6
- Palm Court II	5 x 4	16.4 x 13.1	20	215	2.7	8.8	-	-	-	-	-	-	6
- Palm Court III	9 x 5	29.5 x 16.4	120	1,292	2.7	8.8	-	-	-	-	-	-	18
- Palm Court III Lounge	3 x 5	9.8 x 16.4	15	161	2.7	8.8	-	-	-	-	-	-	-
- Palm Court IV	5 x 4	16.4 x 13.1	20	215	2.7	8.8	-	-	-	-	-	-	6
- Room 264	11 x 5	36 x 16.4	55	592	2.6	8.5	-	-	-	-	-	-	12
- Rooms 265 to 270	4.7 x 5.5	18 x 15.4	25.8	277	2.6	8.5	-	-	-	-	-	-	10