

Quick Reference Guide

Last updated May 3, 2012 | For additional information please contact the hotel directly

Four Seasons Hotel Istanbul at Sultanahmet
Tevkifhane Sokak No. 1, Sultanahmet-Eminönü, Istanbul, 34110, Turkey
Tel 90.212.402.30.00 | Fax 90.212.402.30.10 | Res 90.212.381.40.00

www.fourseasons.com/istanbul



Tevkifhane Sokak No. 1
Sultanahmet-Eminönü, Istanbul
34110, Turkey
Tel 90.212.402.30.00
Fax 90.212.402.30.10
Res 90.212.381.40.00

AIRPORTS

- Atatürk International Airport (IST):
20 minutes (20 kilometres/13 miles)
- Sabiha International Airport (SAW):
75 minutes (/)

TABLE OF CONTENTS

- 2 *Introduction*
- 4 *Destination*
- 7 *Conference Facilities*
- 11 *Guest rooms, Suites and
Private Residences*
- 16 *Dining*
- 17 *Recreational Facilities*
- 18 *Incentive Activities*
- 20 *Appendix: Conference Chart*

Created from a century-old neoclassic Turkish prison in the core of this fabled city – steps from the Blue Mosque and Topkapi Palace. Just 65 guest rooms and suites frame an open courtyard, for an atmosphere of personal attention and ease unprecedented in Istanbul.



With its ochre-tinted stonework, faience tiles, archways, original artwork and Ottoman antiques, tapestries and kilims, every inch of the Hotel proclaims its proud heritage. Crafted with just 65 guest rooms and suites, most with unique architectural details, Four Seasons Hotel Istanbul at Sultanahmet has earned acclaim as one of the world's extraordinary hotels.

Here, you can enjoy fine international cuisine at Seasons, recently named the top hotel restaurant in Turkey. The Lounge offers three settings for casual dining or conversation over afternoon tea. These include the landscaped courtyard, which serves as a quiet oasis in the heart of the city. After a day of business or of experiencing the many sights of Old Istanbul, the health club provides just the place to work out, relax in the sauna or unwind and recharge with a massage.

Four Seasons Hotel Istanbul at Sultanahmet is designed to host the pre-eminent gatherings in the city. Adaptable spaces include the Ballroom, the Divan Meeting Room,

the Boardroom and a rooftop terrace overlooking the minarets of Istanbul.

TRANSPORTATION

Istanbul is easily accessible by air and is served by a number of major airlines through Istanbul Atatürk International Airport, 20 minutes (20 kilometres/13 miles) from the Hotel. Taxi service is readily available at the airport, and the Hotel offers limousine service to and from the airport. Four Seasons Hotel Istanbul at Sultanahmet is located near the city centre and is convenient to all major highways.

WEATHER CHART

Month	°C		°F	
	Highs/Lows	Highs/Lows	Highs/Lows	Highs/Lows
January	7	/ 4	45	/ 39
February	7	/ 3	45	/ 37
March	12	/ 5	54	/ 41
April	13	/ 8	55	/ 46
May	22	/ 13	72	/ 55
June	26	/ 17	79	/ 63
July	29	/ 20	84	/ 68
August	28	/ 20	82	/ 68
September	25	/ 16	77	/ 61
October	20	/ 13	68	/ 55
November	15	/ 8	59	/ 46
December	11	/ 5	52	/ 41

DESTINATION

A fusion of age-old glories and a cool, contemporary 21st-century culture, Istanbul has survived two millennia of extraordinary history. Formerly known as Byzantium, and then as Constantinople, it straddles the 35-kilometre (22-mile) Bosphorus Strait and is frequently described as the crossroads of Europe and Asia. Fought over time and again, the city became the centre of the Roman, Byzantine and Ottoman empires. Its historic heart – Sultanahmet and the bazaar quarter, with its great mosques, opulent palaces and Byzantine ruins – offers a fascinating glimpse into those tumultuous times.

The city holds appeal for all interests – architecture, art, culture, nightlife, cuisine and more. Encompassing three land masses – two on the European side of the Bosphorus, divided by the Golden Horn, and the Asian shores – it is best explored neighbourhood by neighbourhood. In the most historic quarter of this truly historic city waits Four Seasons Hotel Istanbul at Sultanahmet. A few minutes' walk in any direction leads to the wonders of the Old Town, including Topkapi Palace, the Blue Mosque, Hagia Sophia and the Spice Market.

WEATHER

Istanbul enjoys a moderate climate with four distinct seasons. Typically, springtime is short, leading the way to ideal summer temperatures. A long autumn is the prelude to winter, which can be rainy.

LOCAL ATTRACTIONS AND ACTIVITIES

At Four Seasons, you enjoy a unique vantage point from which to explore the sights, sounds and experiences around you. We hope the highlights of local attractions below help simplify your planning. Please let us know how else we can assist you.

Within a 5-minute walk of the Hotel

Aya Sophia (Hagia Sophia):

- The church of Hagia Sophia was dedicated by the Byzantine Emperor Justinian in 537 AD, and featured the largest dome ever built for the next thousand years. When the Ottoman Turks expelled the Byzantines, it was converted into a mosque and four minarets were added. In 1934, the building was deconsecrated and declared a museum. Its main features are the dome and its splendid interior mosaics.

Topkapi Palace Museum:

- Built in the 15th century, the Topkapi Palace was the principal residence of the Sultan. It was the legendary palace of the Ottoman Sultans from the 15th to the 19th centuries. The palace has low buildings set in a series of courtyards and is quite unlike its western counterparts. Be sure to see the Harem, the Treasury and the golden-roofed Baghdad Kiosk.

Hagia Eirene Monument:

- This sixth-century church is located within the courtyard of the Topkapi Palace.

Basilica Cistern:

- This remarkable columned cavern was the water source for both the Byzantine's Grand Palace and the Ottomans' Topkapi Palace. The Sunken Palace, the most exclusive of the myriad underground cisterns, was built by Emperor Justinian to meet the city's water

requirements. It stands on 336 columns and features the statue of the head of Medusa.

Blue Mosque:

- Built in the early 17th century, and recognised by its six slender minarets and walls covered with amazing cobalt blue Iznik tiles, this is perhaps the most famous mosque in the city.

Within a 10-minute walk of the Hotel

Sofa:

- A fine selection of prints, maps, ceramics, miniatures, calligraphy, textiles, antique rugs, silver and contemporary art. Appointments can be arranged by the Concierge.

Within a 15-minute walk of the Hotel

Boat cruise on the Bosphorus:

- This cruise stops at various fishing villages on the way to the Black Sea. The cruise is offered three times daily during the summer and once a day during the winter.

Within a 20-minute walk of the Hotel

Spice Market:

- The Spice Market was built in the 17th century as an extension of the Grand Bazaar. It is an exotic food market and bazaar that sells spices, dried fruits, cheeses and olives, as well as towels, slippers, baskets and jewellery. Outside the market there is a wonderful flower and bird market.

Within a 5-minute drive of the Hotel

Grand Bazaar:

- The Grand Bazaar was built in the 15th century. It has several gates: the most used one is Nuruosmaniye and Beyazit (5 minutes drive from the Hotel). Istanbul's legendary bazaar is a labyrinth of over 4,000 little shops and is everything you dreamed an oriental market could be. It offers gold, jewellery, carpets, silver bibelots, leather, ceramics, copper and brass objects, hand-woven textiles and meerschaum pipes.

Within a 10-minute drive of the Hotel

Çukurcuma:

- Çukurcuma is a charming old quarter famous for its antique dealers. It is definitely worth browsing through the various little antique shops, which are full of hidden treasures.

Within a 15-minute drive of the Hotel

Dolmabahçe Palace:

- This palace was the 19th-century rococo residence of the Ottoman Sultans and the place where Atatürk died in 1938. Visitors are admitted in groups and led by guides.

Nisantasi:

- The Nisantasi area is famous for its chic cafés, bars and boutiques.

Borusan Cultural Centre:

- Offers concerts and recitals.

Istanbul Convention and Exhibition Centre:

- This centre is next to the Hilton Hotel and CRR Concert Hall in Harbiye. ICEC is ideally located in the very heart of the city, at the centre of the city's business, cultural and commercial life. The centre is equipped with the latest technology and offers 26 meeting rooms with a total capacity of 8,900, including the Anadolu Auditorium and the Rumeli Exhibition Room.

Atatürk Cultural Centre:

- Located in the Taksim area, the cultural centre is open daily.

Inönü Stadium:

- Inönü Stadium is a venue for soccer games, located in the Dolmabahçe area.

Within a 20-minute drive of the Hotel

Cemal Resit Rey:

- Located in the Harbiye area, Cemal Resit Rey is open daily.

Within a 30-minute drive of the Hotel

Akmerkez Shopping Mall:

- This mall is an ultramodern skyscraper.

Rumeli and Anadolu Hisar Fortresses:

- These twin fortresses can be found along the Bosphorus river, approximately 30 minutes from the Hotel.

CONFERENCE FACILITIES OVERVIEW

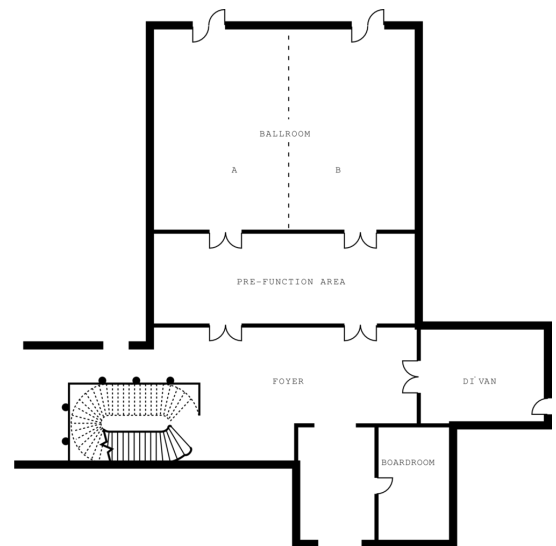
Total Space	340 m ² 3,660 sq.ft.
Largest Ballroom	197 m ² 2,121 sq.ft.
Meet and Feed (max. capacity)	60
Breakouts	3
Banquet (max. capacity)	200
Outdoor Banquet (max. capacity)	100
Private Dining (max. capacity)	25

CONFERENCE FACILITIES

Gather at one of the world's extraordinary hotels, steps from the city's ancient treasures. Four Seasons Hotel Istanbul at Sultanahmet offers 340 square metres (3,660 square feet) of interior conference and function space. In summer, our rooftop suite and terrace, with its inspiring view of the Haghia Sophia, is also available. The Ballroom, with its pre-function foyer, is an elegant setting for prestigious business or social events – a conference for 80, a banquet for up to 200 diners or a reception for as many as 270. For smaller gatherings, the Divan Meeting Room or the Boardroom can accommodate from eight to 35 participants.

Four Seasons ensures the success of your event and makes planning effortless with professional staff renowned for creating distinctive menus, décor and entertainment.

Lower lobby level



TECHNICAL ASSISTANCE

The meeting rooms are equipped with overhead projector, slide projector, projection screens and wired or wireless Internet access. The Hotel will be happy to arrange the rental of any other equipment necessary to ensure a flawless presentation.

MUSIC AND ENTERTAINMENT

Our catering coordinator will be happy to arrange any type of music or entertainment for guests' events. Background music is provided in our meeting facilities on a complimentary basis.

RECEIVING AND MAINTENANCE

For easy customs clearance, all packages should be sent to the attention of Four Seasons Hotel Istanbul at Sultanahmet and its owner, Sultanahmet Turizm A.S., not to the guest's own name.

DESTINATION MANAGEMENT

A list of recommended destination management companies is available upon request.

SPOUSE PROGRAMMES

Four Seasons Hotel Istanbul at Sultanahmet is close to the heart of the city, conveniently

located for visiting our many historic sites and shopping areas. Take a tour of the Bosphorus, visit the ancient Topkapi Palace or get a glimpse into history at the Hagia Sophia Museum. Shopping options include the bustling Grand Bazaar or the North American-style Akmerkez shopping mall.

CHILDRENS AND FAMILY PROGRAMMES

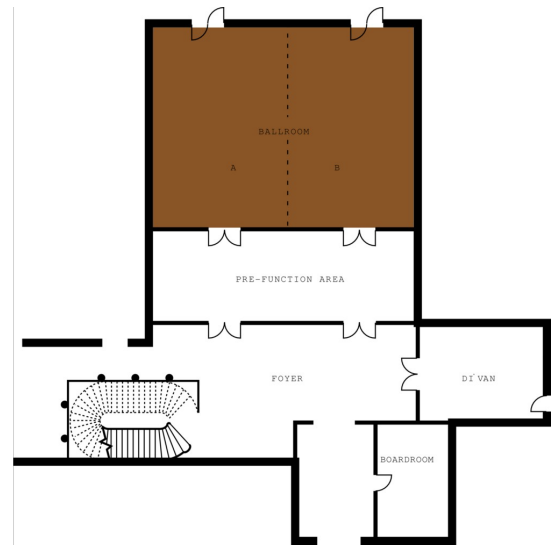
We would be pleased to help arrange appropriate activities for visiting families.

BALLROOM

Dimensions	15.4 x 12.8 m 50.5 x 42 ft
Size	197 m ² 2122 sq.ft.
Height	3.3 m 11 ft

Capacities

Classroom	84
Hollow square	65
U Shape	70
Theatre	175
Reception	190
Banquet Rounds	150

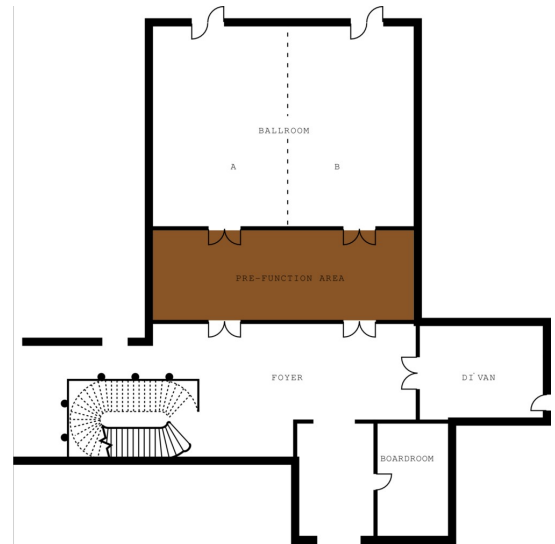


BALLROOM PRE-FUNCTION ROOM

Dimensions	15.4 x 5.2 m 50.5 x 17.1 ft
Size	80 m ² 862 sq.ft.
Height	3.3 m 11 ft

Capacities

Theatre	50
Reception	80
Banquet Rounds	50
Boardroom	35

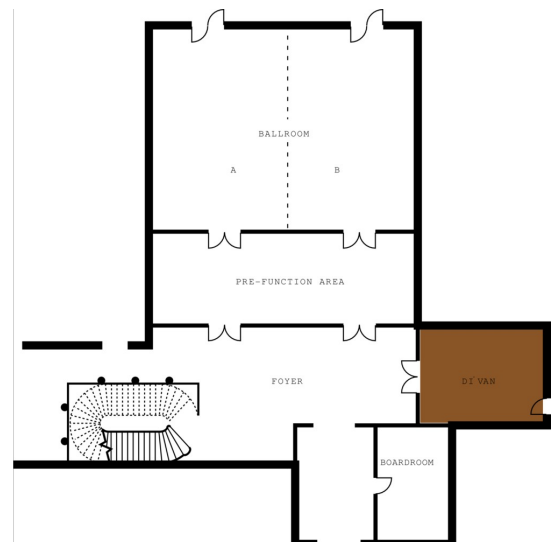


DIVAN MEETING ROOM

Dimensions	5.4 x 7.7 m 17.7 x 25.3 ft
Size	42 m ² 448 sq.ft.
Height	3.3 m 11 ft

Capacities

Classroom	18
Hollow square	24
U Shape	20
Theatre	35
Reception	25
Banquet Rounds	20

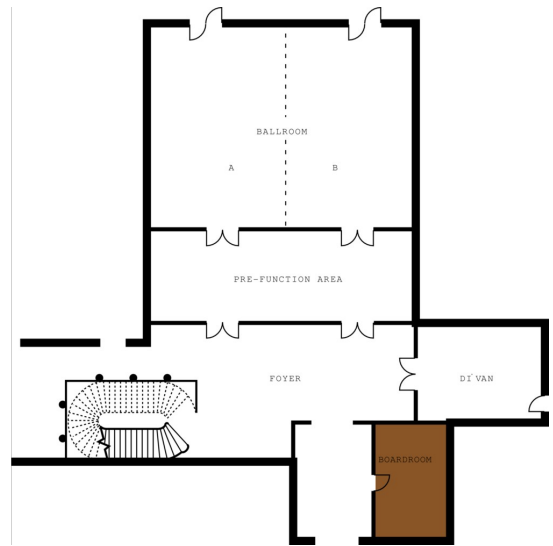


BOARDROOM

Dimensions 3.4 x 6.1 m
11.2 x 19.9 ft
Size 21 m²
221 sq.ft.
Height 3.3 m
11 ft

Capacities

Boardroom 8



GUEST ROOMS, SUITES AND PRIVATE RESIDENCES OVERVIEW

Offering 65 guest rooms and suites, Four Seasons Hotel Istanbul at Sultanahmet provides an intimate atmosphere in the heart of this exotic city. The Hotel's historic architecture creates a variety of unique rooms and suites, all nestled around a beautifully landscaped courtyard.

Standard room features include a refrigerated private bar, a large plasma television, an MP3 player docking station, and a DVD and CD player. Rooms are equipped for wired or wireless Internet access. The lavish marble bathroom includes a deep soaking tub and separate shower, a small LCD television and a separate WC.

Room Category	#	Beds	Size (m ²)	View (sq ft)	
- Four Seasons Executive Suite	3	1 King	60	645	Landscaped inner courtyard
- Premier Room	19	1 King, 2 queen or 2 twin	55 – 60	592 – 645	Landscaped courtyard, exterior garden, or street view
- Deluxe Room	35	1 King or 2 twin	42 – 50	452 – 538	Courtyard, exterior garden, street, or partial views of St. Sophia or the Blue Mosque.
- Marmara Suite	1	1 King	130	1,397	Sea of Marmara and Princess Islands
- St. Sophia Suite	1	1 King	115	1,236	St. Sophia and surrounding neighbourhood.
- One-Bedroom Deluxe Suite	3	1 King	80	861	Private courtyard or street view
- One-Bedroom Suite	3	1 King	75	807	Landscaped inner courtyard

Guest Room Overview

Deluxe Rooms look into the Hotel's landscaped courtyard, the garden or the street; some offer partial views of the Hagia Sophia or the Blue Mosque.

Exceptionally spacious Four Seasons Rooms offer a comfortable bedroom with a sitting area and as many as seven large windows facing the courtyard, garden – or, in some cases, a partial view of Hagia Sophia. Secluding the oversized bedroom from the living room, Four Seasons Executive Suites offer added space, convenience and privacy.

Suites Overview

Each of the three Deluxe Suites is unique, creating the perfect quarters for a senior executive wishing to entertain privately or a leisure traveller seeking a distinctive experience of Istanbul. Some have partial views of Hagia Sophia or the Blue Mosque. Two are two-level suites, with extra-high angled ceilings and floor-to-ceiling French windows overlooking the neighbourhood. The third offers a large walk-out balcony overlooking the private courtyard.

The St. Sophia Suite and slightly larger Marmara Suite are each designed with large windows and three private terraces, providing stunning views of legendary Istanbul. The St. Sophia Suite overlooks the Hagia Sophia, while the Marmara Suite provides vistas of the Sea of Marmara and the Princess Islands. In both suites, high angled ceilings enhance the sense of spaciousness. The living space includes a charming fireplace and kitchenette with a dining area that seats six (St. Sophia) or eight (Marmara). The opulent master

bathrooms are equipped with a whirlpool tub and separate shower with steam.

FOUR SEASONS EXECUTIVE SUITE

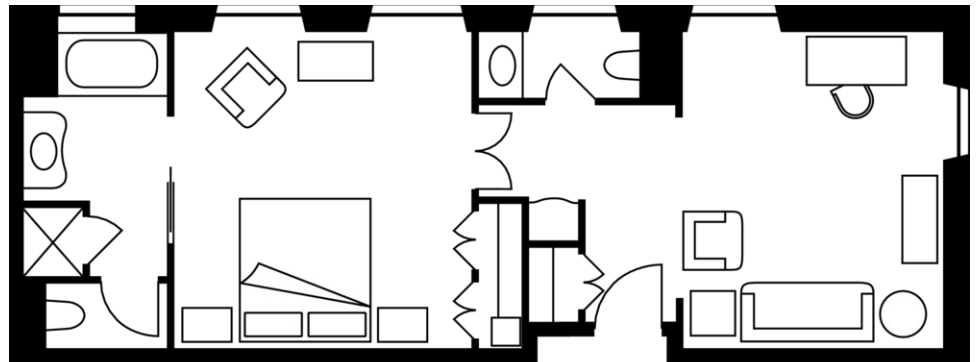
Number 3
Beds King bed
Size 60 m²
645 sq ft

Location

1st to 3rd floors

View

Landscaped inner courtyard



PREMIER ROOM

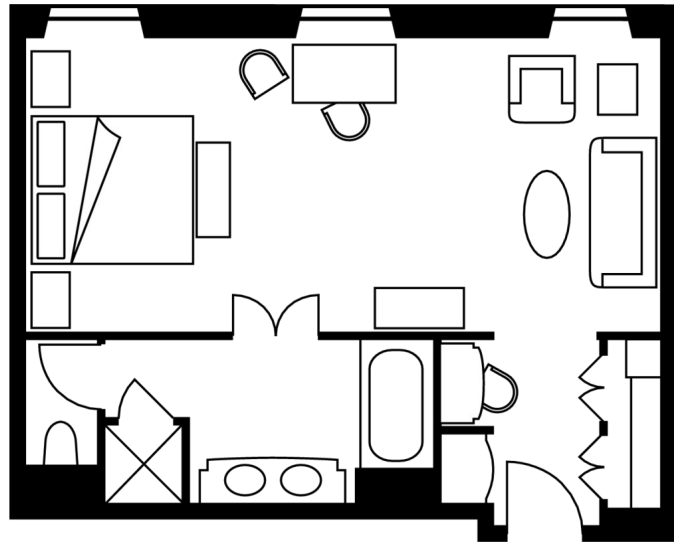
Number 19
Beds One king, two queen or
two twin beds
Size 55 – 60 m²
592 – 645 sq ft

Location

1st to 3rd floors

View

Landscaped courtyard, exterior garden,
or street view



DELUXE ROOM

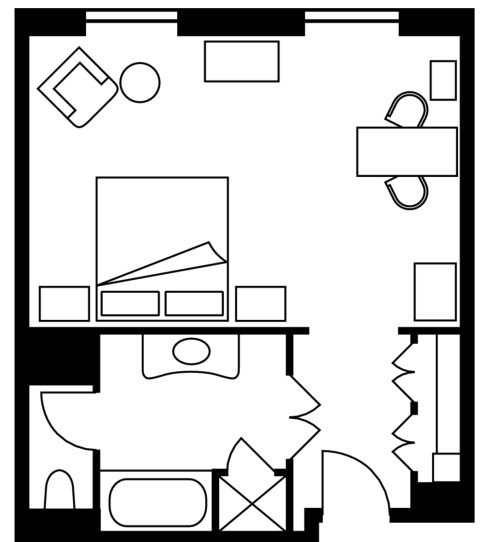
Number 35
Beds King or two twin beds
Size 42 – 50 m²
452 – 538 sq ft

Location

1st to 4th floors

View

Courtyard, exterior garden, street, or
partial views of St. Sophia or the Blue
Mosque.



MARMARA SUITE

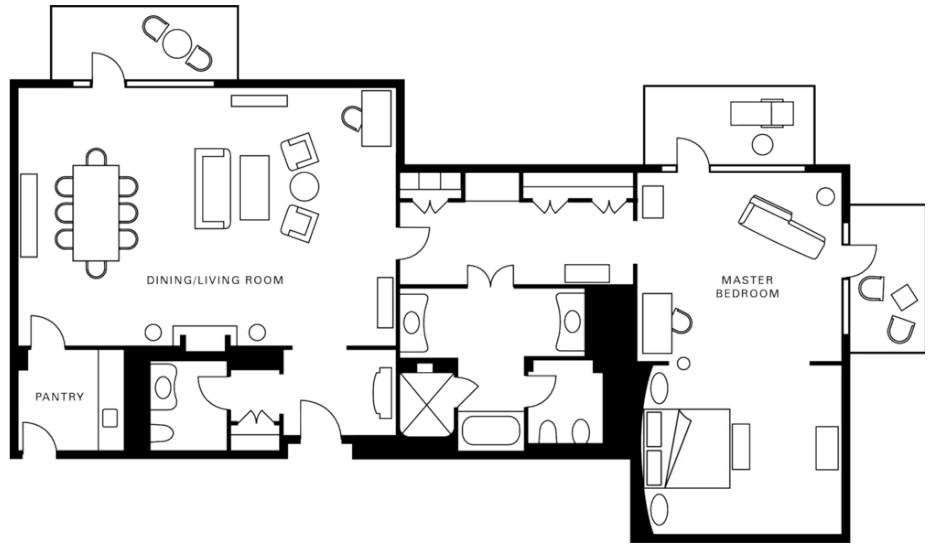
Number 1
Beds King
Size 130 m²
1,397 sq ft

Location

4th floor

View

Sea of Marmara and Princess Islands



AMENITIES

- All news cable network
- CD clock radio
- CD player
- Complimentary newspaper with breakfast
- Down pillows
- DVD player
- Fax machine on request
- Hair dryer
- Hypo-allergenic pillows on request
- In-room safe
- Multi-line telephone(s) with voicemail
- Refrigerated private bar
- Thick terry bathrobes
- Twice-daily housekeeping service
- Wired or wireless Internet access

GUEST SERVICES

- 24-hour In-Room Dining
- 24-hour multilingual Concierge
- Airport transfers
- Non-smoking rooms
- One-hour pressing
- Private dining room
- Restaurant
- Self-parking
- Services and amenities for younger guests
- Umbrellas
- Valet parking

VIP GIFTS AND WELCOME AMENITY

Special arrangements can be made for clients to purchase welcome amenities and gifts for their VIP guests.

DINING HOURS OF OPERATION

Seasons Restaurant

Breakfast

Sunday 7:00 am - 11:00 am

Breakfast

Monday to Saturday 6:30 am - 11:00 am

Brunch

Sunday 11:30 am - 3:00 pm

Lunch

Every day noon - 3:00 pm

Dinner

Every day 7:00 pm - 11:00 pm

The Lounge

Every day 11:00 am - 11:30 pm

Afternoon tea

Every day 3:00 pm - 6:00 pm

In-Room Dining

Every day - 24 hours

DINING

In the courtyard, a spectacular glass pavilion is home to Seasons, where fine cuisine can be enjoyed indoors or on the terrace. Enjoy more casual fare, cocktails or coffee served in the three unique settings of The Lounge.

RESTAURANTS

Seasons Restaurant

Seasons features a glass-enclosed courtyard and an outdoor terrace. The elegant, refined décor combines Turkish artwork and a more contemporary style. The restaurant also has a beautifully landscaped garden that creates a peaceful oasis in the middle of Istanbul.

- Cuisine: International cuisine and local specialties
 - Indoor seating: 65
 - Outdoor seating: 50
-

LOUNGES

The Lounge

The elegant Lounge consists of three sections: an intimate room with relaxing décor and a fireplace; a piano room with original artwork; and a winter garden with greenery. It's the perfect place for a light lunch, serving sandwiches, salads, pasta and other light fares; the bar also offers exotic cocktails and specialty beverages. A beautiful pergola overlooking the garden is a great place for hot summer nights.

- Indoor seating: 67
- Outdoor seating: 36

RECREATION FACILITIES

Explore the city's dizzying array of sites with the resourceful assistance of the multilingual Four Seasons Concierge. After a day of adventure, catch your breath with a massage or high-tech workout in the health club.

SPA SERVICES

Exclusively for Four Seasons guests, a variety of revitalising massage treatments and Istanbul's highest level of personalised attention are available in the Health Club. Separate men's and women's saunas in the luxurious locker rooms enhance the sense of relaxation.

FITNESS FACILITIES

The Health Club provides active guests with a private retreat of exceptional quality in which to exercise. It offers a range of high-tech cardiovascular equipment and free weights, as well as men's and women's lockers, change rooms and saunas.

- Size: 1,114 m² / 12,000 sq ft

GOLF

Kemer Golf and Country Club

Kemer Golf and Country Club is located outside Istanbul in the Belgrade Forest. This spectacular 18-hole championship golf course has been designed to highlight the beauty of its forest surroundings. The excellent clubhouse features a bar where guests can relax after a challenging round of golf.

TENNIS

Swissotel

A small facility with three courts.

INCENTIVE ACTIVITIES

Sample itinerary

Istanbul reflects both the exotic beauty of its past and the fast-forward pulse of today. Let Four Seasons help customise itineraries for your group or party while you are here. The following is a sample group itinerary. We invite you to discuss your needs with us.

Day 1

Arrival at Hotel

Transfer by deluxe coach to Four Seasons Hotel Istanbul at Sultanahmet. Relax after your flight:

- Revitalise with a massage in the Spa.
- Work out in the fitness centre.
- Relax with a cocktail in The Lounge or, season permitting, on the Roof Terrace, where you'll enjoy magical views of domes and minarets.

Evening

Welcome to Istanbul dinner - Join us for an evening of fine cuisine in the beautiful courtyard at Four Seasons Hotel Istanbul at Sultanahmet.

Day 2

Day

Enjoy breakfast at leisure, either in Seasons Restaurant or in the privacy of your room. Then choose from the following:

- A full-day city tour focusing on Basilica Cistern, Topkapi Palace and the Blue Mosque.
- A full-day city tour including Hagia Sophia, the Archaeological Museum and shopping at the Grand Bazaar.

Evening

An evening in Old Pera - Enjoy the stylish ambience of Old Pera, with cocktails at one of the neighbourhood's most fashionable bars and contemporary dining in a local restaurant.

Day 3

Day

Enjoy breakfast at leisure, either in Seasons Restaurant or in the privacy of your room. Then choose from the following options:

- Sail the Bosphorus, with a visit to Dolmabahçe Palace, followed by lunch and shopping in trendy Nisantasi.
- Browse for antiques in Çukurcuma.
- Enjoy a private tour of Sakip Sabanci Museum or Istanbul Modern Museum.
- Experience a traditional Turkish bath.

Evening

Farewell to Istanbul gala dinner - Celebrate your successful event, beginning with a unique cocktail cruise to the 12th-century Maiden's Tower aboard a traditional *kayik*. After disembarking, dine elegantly on Turkish or international cuisine in one of Istanbul's most romantic settings.

Day 4

Morning

Enjoy breakfast at your leisure. Then choose from the following options:

- Revitalise with a massage in the Spa.
- Work out in the fitness centre.

Lunch

Before your departure, enjoy a tasty lunch conveniently close to the airport at Beyti Restaurant, famous for its delectable grills, or at a traditional Turkish kebab restaurant.

www.fourseasons.com/istanbul

Rooms	Dimensions		Size		Height		Classroom	Hollow square	U-shape	Theatre	Reception	Banquet rounds	Conference/ boardroom
	(m)	(ft)	(m ²)	(sq ft)	(m)	(ft)							
- Ballroom	15.4 x 12.8	50.5 x 42	197	2122	3.3	11	84	65	70	175	190	150	80
- Ballroom Pre-function Room	15.4 x 5.2	50.5 x 17.1	80	862	3.3	11	-	-	-	50	80	50	35
- Divan Meeting Room	5.4 x 7.7	17.7 x 25.3	42	448	3.3	11	18	24	20	35	25	20	22
- Boardroom	3.4 x 6.1	11.2 x 19.9	21	221	3.3	11	-	-	-	-	-	-	8