



Quick Reference Guide

Last updated May 3, 2012 | For additional information please contact the hotel directly

Four Seasons Hampshire, England
Dogmersfield Park, Chalky Lane, Dogmersfield, Hampshire RG27 8TD, RG27 8TD,
England
Tel 44.1252.853000 | Fax 44.1252.853010

www.fourseasons.com/hampshire



Dogmersfield Park, Chalky Lane
Dogmersfield, Hampshire RG27
8TD RG27 8TD, England
Tel 44.1252.853000
Fax 44.1252.853010

AIRPORTS

- London Heathrow Airport (LHR): 45 minutes (43 kilometres/27 miles)
- London Gatwick Airport (LGW): 1 hour (80 kilometres/50 miles)

TABLE OF CONTENTS

- 2 *Introduction*
- 4 *Destination*
- 9 *Conference Facilities*
- 13 *Guest rooms, Suites and Private Residences*
- 18 *Dining*
- 19 *Recreational Facilities*
- 21 *Incentive Activities*
- 23 *Appendix: Conference Chart*

Enjoy Georgian manor house elegance and ultramodern comforts within hectares of rolling countryside and heritage-listed gardens. Just an hour from central London, this intimate historic retreat promises the Four Seasons touch with storybook charm and gracious, intuitive service.



Four Seasons Hotel Hampshire blends heritage buildings and contemporary facilities into a true country escape. With just 133 guest rooms and suites, it seamlessly integrates the old and the new, all with the character of the restored Georgian manor house. Stretching to the horizon on all sides are the gardens and grounds of historic Dogmersfield Park: its meadows, woods and waterways, including a section of the Basingstoke Canal.

The range of possibilities creates an unmatched experience. Discover Zen-like serenity in the Spa – which has been carefully transformed from an 18th-century stable block. Enjoy some of the finest cuisine in Hampshire without leaving the pastoral grounds. Relax with a wealth of country diversions: from tennis to croquet, fishing to falconry, from the on-site equestrian centre to a cruise on the Basingstoke Canal.

With its elegant indoor function space and a wealth of outdoor settings in fine weather, Four Seasons Hotel Hampshire is a memorable venue for exclusive gatherings or incentive retreats for up to 250 guests.

TRANSPORTATION

Heathrow Airport is 43 kilometres (27 miles) and approximately 50 minutes from the Hotel. Gatwick Airport is 80 kilometres (50 miles) and approximately 90 minutes from the Hotel. Both airports service all major airlines.

Farnborough, a private airfield, is located 10 kilometres (6 miles) northeast of the Hotel, or approximately 20 minutes away. Upon request, private jet transportation can be arranged between destinations. Transportation from Farnborough Airport to the Hotel must be arranged in advance with the Concierge, as taxis and public transportation are not readily available.

WEATHER CHART

Month	°C		°F	
	Highs/Lows	Highs/Lows	Highs/Lows	Highs/Lows
January	9	/ 4	48	/ 39
February	11	/ 4	52	/ 39
March	12	/ 6	54	/ 43
April	12	/ 6	54	/ 43
May	17	/ 7	63	/ 45
June	19	/ 13	66	/ 55
July	23	/ 14	73	/ 57
August	23	/ 14	73	/ 57
September	18	/ 12	64	/ 54
October	15	/ 7	59	/ 45
November	12	/ 6	54	/ 43
December	9	/ 4	48	/ 39

DESTINATION

Quintessential Hampshire – quietly upscale, with sleepy hamlets and rolling hills, forests and meadows, walking trails and towpaths, canals and castles. Just an hour from London and in close proximity to the city's major airports, the area offers a remarkable diversity of relaxing outdoor pursuits, from a country ramble to tennis, horseback riding and nearby golf.

WEATHER

England has a moderate climate, rarely marked by extremes of heat or cold. Temperatures can range from -1°C to 33°C (30°F to 91°F), but they rarely drop below 1°C (34°F) or go above 26°C (79°F). Evenings are cool, even in the summer. July and August are the warmest months, with an average temperature of about 18°C (65°F). December and January are the coldest months, with an average temperature of 6°C (43°F). Precipitation is heaviest in October, with averages of about 760 millimetres (30 inches) annually in most of England.

LOCAL ATTRACTIONS AND ACTIVITIES

At Four Seasons, you enjoy a unique vantage point from which to explore the sights, sounds and experiences around you. We hope the highlights of local attractions below help simplify your planning. Please let us know how else we can assist you.

Within a 5-minute drive of the Hotel

Odiham :

- This charming village, beside the Basingstoke Canal, boasts some lovely Georgian town houses and cottages dating back to the 16th century. An ideal spot to stroll around or to sample the local pubs. Odiham lies south west of the Hotel.

Within a 15-minute drive of the Hotel

West Green House Gardens:

- These gardens are surrounded by a neoclassical park studded with follies, birdcages, monuments and a lake that provide a glorious backdrop to one of the most spectacular garden creations of recent times - so much so that it has received the ultimate accolade of the two-star rating from Britain's *Good Garden Guide*.

Farnham:

- Farnham is a charming old market town, with some of the finest Georgian architecture in the region, and a castle dating back to the 12th century. It offers a wealth of tempting boutiques and restaurants. Farnham lies south west of the Hotel.

Hartley Wintney :

- This village has been inhabited since medieval times. The main attraction is its "quaint" appeal and its antique shops. Hartley Wintney lies just south of the Hotel.

New Ashgate Gallery :

- The New Ashgate Gallery is a registered charity which promotes a wide range of visual arts in the area. The gallery provides a changing exhibition of work by contemporary artists and craftspeople, including work by many new graduates of the Surrey Institute of Art and Design in Farnham. The Gallery lies close to the Maltings and River Wey.

Milestones, Hampshire's Living Museum:

- One of the most successful attractions in the south, this museum houses a network of 19th-century and early 20th-century streets alive with the sound, smells and transport of the time.

The Farthingale Centre Antiques & Interior Furnishings:

- A centre of antiques for over 40 years, it houses some 38 dealers selling everything from fine antique English oak and country furniture to Islamic art and carpets to automobilia. There are 5 other antique dealers and 2 antique centres in Hartley Wintney, which has made this village a mecca for collectors and dealers from all over the world for many years.

Within a 20-minute drive of the Hotel

Watts Gallery:

- The Watts Gallery houses the studio collection of G.F. Watts, and includes works by his wife, Mary Watts, and other Victorian artists. Opened on April 1, 1904, just two months before Watts's death, it is the only picture gallery in the UK built to house a single artist's collection. Today, the Watts Gallery still retains the belief upon which it was founded – that great art should be accessible to all.

The Vyne:

- An attractive and comfortable country house dating from the early 16th century, The Vyne is run by the National Trust. It has an exquisite Tudor chapel and extensive grounds, including a fine 18th-century landscape park, a lake and a summerhouse dating from the 1630s. Jane Austen was a regular visitor here.

Birdworld:

- Britain's largest bird park and gardens includes Underwater World, the Jenny Wren Farm and Forest Lodge Garden Centre. Aviaries are set in 11 hectares (26 acres) of beautifully landscaped gardens. Birds to admire include the Hyacinth Macaw and Bluebeard, as well as giant ostriches and talking parrots.

The Pack House:

- The Packhouse is based in a beautiful 400-year old grade II listed hop kiln. It is located in The Surrey Hills on the outskirts of Farnham, an area of outstanding natural beauty. The stunning showroom features over 100 dealers and offers an eclectic mix of antiques, interiors and inspiration.

Within a 25-minute drive of the Hotel

Stratfield Saye House:

- Home to the Dukes of Wellington since 1817, the estate is now open to the public.

Jane Austen's House:

- Located in the village of Chawton, the house is where the world famous author wrote Mansfield Park, Persuasion and revised the earlier manuscripts of Sense and Sensibility, Pride and Prejudice and Northanger Abbey.

Guildford:

- Southeast of the Hotel, this town – which narrowly missed being crowned a city – is home to thriving high-street shopping, restaurants and bars.

Within a 30-minute drive of the Hotel

Reading:

- This town has become very popular amongst the local communities, following the building of its new shopping centre, “The Oracle.” This is a very social town for shopping, wine bars, eating out and movie-going at the multiplex cinema. Reading lies north of the Hotel.

Whitchurch Silk Mill:

- This mill was built along Hampshire's River Test in 1800, during King George III's reign, and has been a functioning silk mill since the 1820s/1830s. Today, the mill produces high-quality silks to order for theatrical costumes, interior designers and historic houses, and is a working museum open to the public.

Within a 35-minute drive of the Hotel

INTECH Discovery Centre:

- This purpose-built centre houses 100 interactive exhibits, which demonstrate the science and technology of the world around us in an engaging and exciting way.

Within a 40-minute drive of the Hotel

Legoland:

- The theme park of Legoland is packed with activities for children including a lego model village, rides, gold panning, car racing and much more.

Windsor Castle:

- This restored royal castle was built nearly 900 years ago. It is the largest occupied working castle in the world, and features some of the finest works of art, armour and pictures in the world.

Theatre Royal Winchester:

- Theatre Royal Winchester presents a wide range of work, from stand-up comedy to children's theatre. Includes music, dance and classic plays.

Winchester:

- Once the capital of Anglo-Saxon England, Winchester has been settled since the Iron Age. For centuries it was England's centre of learning and is home to Winchester College (established 1382). A small and lovely old city, full of historical buildings including a magnificent Cathedral whose origins are in the 7th century. The current building dates back to 1077 and is the longest medieval cathedral in Europe.

Loseley House and Gardens:

- Loseley House was built in 1562 by Sir William More and is a fine example of Elizabethan architecture. The Walled Garden is based on a design by Gertrude Jekyll and incorporates five different areas, ranging from the award-winning Rose Garden to

the Herb Garden, White Garden and Vegetable Garden.

Cholderton Rare Breeds Farm Park:

- This purpose-built tourist attraction is set in the beautiful countryside on the Wiltshire/Hampshire border. Special features include friendly animals to touch and feed, tractor and trailer rides, Rabbit World with over 50 breeds and a nature trail through an ancient wood.

Within a 45-minute drive of the Hotel

Theatre Royal Windsor:

- Theatre Royal Windsor has a reputation for the quality of its productions and is currently one of Britain's leading theatres.

Windsor:

- Windsor combines history, contemporary shopping and fine dining with sports, leisure activities and events.

Within a 50-minute drive of the Hotel

The Living Rainforest:

- This centre is open year-round (except Christmas Day) and features a tropical rainforest-inspired ecological garden. Exhibits range from plants and spectacular blooms to delicate beauties and silent hunters.

Within a 55-minute drive of the Hotel

Stonehenge:

- Recognised as a World Heritage Site, thought to be close to 3,000 years old, Stonehenge is Britain's greatest prehistoric archaeological monument known throughout the world, these enigmatic stones have engendered a sense of reverence in the millions of guests who visit them.

Within a 1-hour drive of the Hotel

National Motor Museum:

- Located in the grounds of Beaulieu (pronounced Bewley) Abbey, in the New Forest, the museum has a comprehensive collection of cars and motor cycles, including a James Bond and Star Cars exhibition.

Royal Marines Museum:

- Discover the exciting story of the Royal Marines, brought to life with dramatic and interactive displays.

Robert Perera Gallery:

- This gallery features a fine exhibition of 19th- and 20th-century paintings and prints, and specialises in original works by professional artists from the turn of the century to the present day. Subjects include marine, landscape and wildlife paintings in oil and watercolour, as well as traditional original prints in etching and wood block.

Portsmouth Historic Dockyard:

- View both the HMS Victory (Admiral Nelson's flagship for the Battle of Trafalgar), and the Mary Rose, the only 16th century warship on display in the world. Accidentally sunk during an engagement with the French fleet in 1545, the story behind the rediscovery and raising of the Mary Rose is seminal in nautical archaeology.

Within a 1-hour drive of the Hotel

London:

- A major international city with roots dating back to Roman times, London has much to offer.

Within a 1.5-hour drive of the Hotel

National Gallery:

- This gallery showcases one of the greatest collections of European paintings in the world.

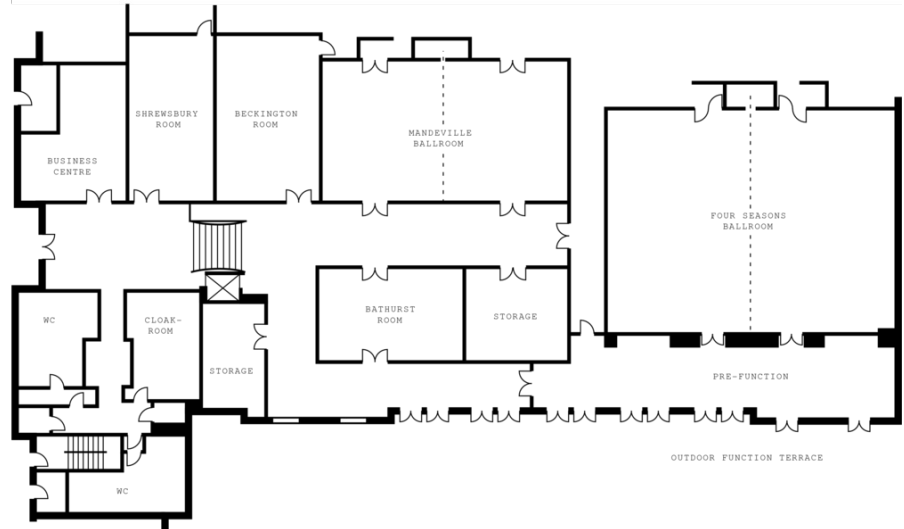
CONFERENCE FACILITIES OVERVIEW

Total Space	620 m ² 6,674 sq.ft.
Largest Ballroom	258 m ² 2,777 sq.ft.
Meet and Feed (max. capacity)	120
Breakouts	4
Banquet (max. capacity)	200
Outdoor Banquet (max. capacity)	300
Private Dining (max. capacity)	32

CONFERENCE FACILITIES

Hampshire's finest meeting venue is an ultramodern setting with Georgian manor house charm that accommodates small and medium-sized groups of up to 250 people. Its 646 square metres (6,938 square feet) of meeting and conference space combines the elegance of an English manor with the most up-to-date technology. In fine weather, the surrounding lawns and gardens provide a breathtaking backdrop for outdoor receptions or parties, and the Wedding Garden, in a wooded glade, offers tranquillity and seclusion for a very special occasion.

Meeting and function rooms



TECHNICAL ASSISTANCE

An on-site technical team is dedicated to looking after the needs of every function. All meeting space at the Hotel is fully equipped to support the most demanding presentation and communication requirements.

MUSIC AND ENTERTAINMENT

Catering and conference service specialists can arrange music and entertainment to complement any part of your function or event.

RECEIVING AND MAINTENANCE

Special arrangements for the delivery of oversized packages or environmentally sensitive equipment should be made through the Catering and Conference Services Manager. The Engineering Department is available 24 hours a day for general assistance.

BUSINESS SERVICES

Around the clock, Four Seasons can assist you with business, entertainment or travel arrangements through the Business Center and resourceful, multilingual Concierge.

- 24-hour business centre
- 24-hour business services
- Airline reservation service
- Audiovisual equipment
- Computers
- Express check-in/check-out
- Secretarial service

- Wired or wireless Internet access in meeting rooms

SPOUSE PROGRAMMES

The Hotel offers a variety of activities that will interest the spouses of meeting participants.

On-site:

- Boating on the Basingstoke Canal
- Cooking with the Masters – workshops with a Four Seasons chef
- Customised spa experience
- Personal horse-riding instruction

CHILDRENS AND FAMILY PROGRAMMES

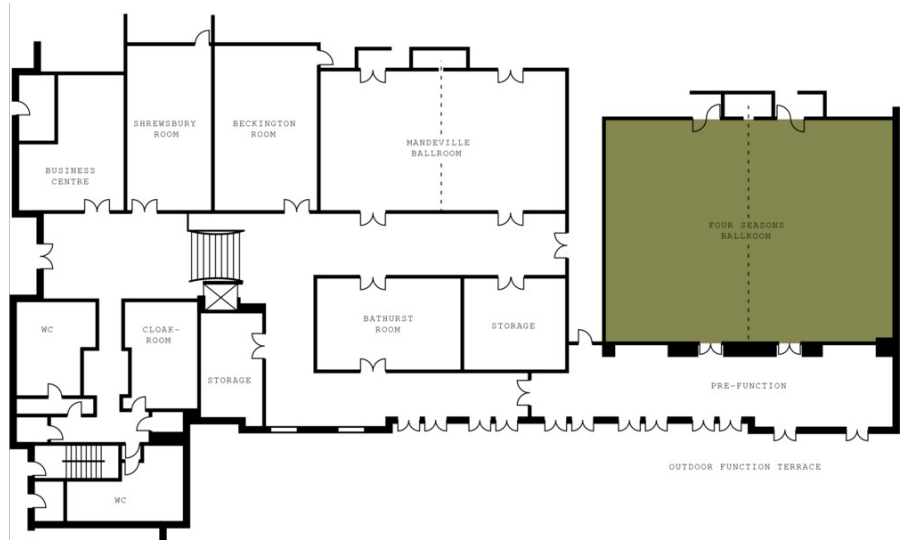
We would be pleased to help arrange appropriate activities for visiting families.

FOUR SEASONS BALLROOM

Dimensions	13.9 x 18.5 m 45.6 x 60.7 ft
Size	258 m ² 2,766 sq.ft.
Height	4.4 m 14.4 ft

Capacities

Classroom	110
U Shape	55
Theatre	260
Reception	250
Banquet Rounds	200
Boardroom	60

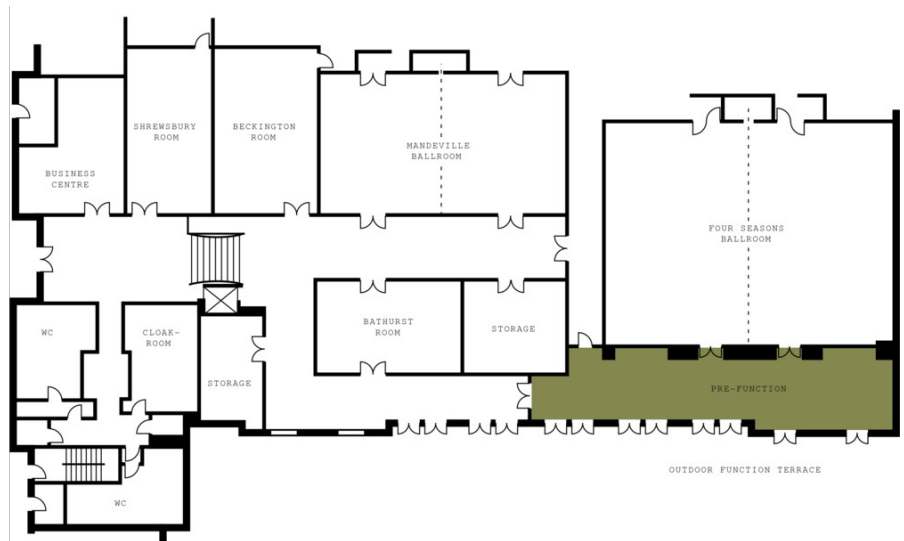


FOUR SEASONS BALLROOM PRE-FUNCTION AREA

Dimensions	4.1 x 22.9 m 13.4 x 75.1 ft
Size	94 m ² 1,009 sq.ft.
Height	3.6 m 11.8 ft

Capacities

Reception	150
Banquet Rounds	40
Boardroom	30

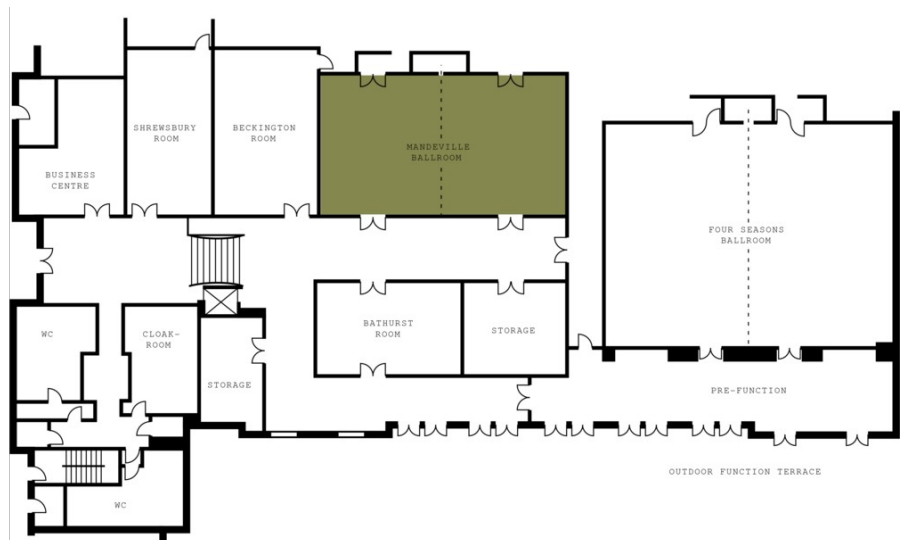


MANDEVILLE BALLROOM

Dimensions	8.4 x 14.5 m 27.6 x 47.6 ft
Size	122 m ² 1,310 sq.ft.
Height	3.8 m 12.5 ft

Capacities

Classroom	60
U Shape	36
Theatre	140
Reception	120
Banquet Rounds	100
Boardroom	40

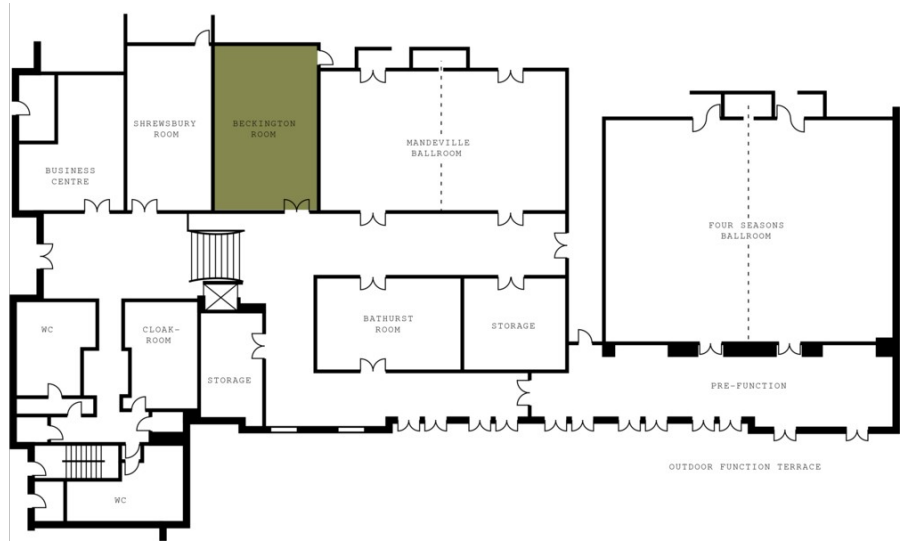


BECKINGTON ROOM

Dimensions	4.7 x 10.1 m 15.4 x 33.1 ft
Size	47 m ² 510 sq.ft.
Height	3.5 m 11.5 ft

Capacities

Classroom	30
U Shape	18
Theatre	58
Reception	40
Banquet Rounds	48
Boardroom	25

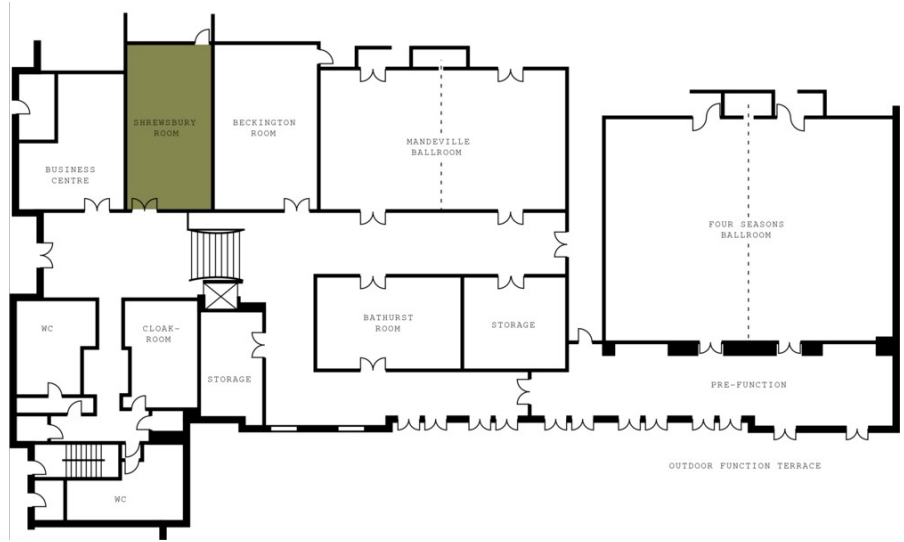


SHREWSBURY ROOM

Dimensions	5.3 x 9.4 m 17.4 x 30.8 ft
Size	50 m ² 536 sq.ft.
Height	2.5 m 8.2 ft

Capacities

U Shape	15
Theatre	44
Reception	40
Banquet Rounds	36
Boardroom	25

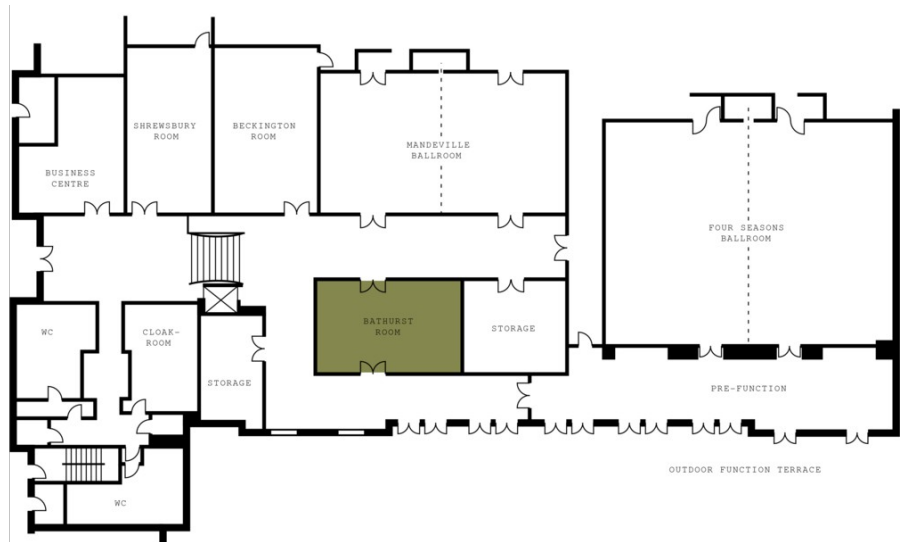


BATHURST ROOM

Dimensions	5.1 x 9.6 m 16.7 x 31.5 ft
Size	49 m ² 526 sq.ft.
Height	3.8 m 12.5 ft

Capacities

Theatre	30
Reception	20
Banquet Rounds	24
Boardroom	15



GUEST ROOMS, SUITES AND PRIVATE RESIDENCES OVERVIEW

Four Seasons Hotel Hampshire's 133 guest rooms, including 22 suites, are generously sized and reflect the quiet charm of the Georgian era. All guest quarters offer attractive views, whether of the central courtyard or the gardens and rolling hills beyond. Well-defined work areas allow guests to remain productive and focused, with technology for communication and entertainment, including high-speed Internet access throughout.

Spacious marble bathrooms incorporate signature Four Seasons features: a deep soaking tub, separate glass-enclosed shower, large vanity and, in a separate alcove, a WC with telephone.

Room Category	#	Beds	Size (m ²)	View (sq ft)	
- Grand Manor Room	6	1 King	45	485	The Estate's grounds
- Manor Room	5	1 King	45	485	Inner courtyard
- Heritage Room	15	1 King or 2 twin	45	485	The Estate's grounds
- Garden Room	63	1 King or 2 twin	45	485	Estate grounds or inner courtyard
- Mews Room	22	1 King or 2 twin	45	485	The 18th-century stable block
- Four Seasons Executive Suite	8	1 King	67	720	Central courtyard and woodlands
- Royal Suite	1	2 King	225	2,420	The Estate's grounds
- Mildmay Suite	1	1 King	135	1,453	The Estate's grounds
- Ellis St. John Suite	1	1 King	90	970	The Estate's grounds
- William Godson Suite	1	1 King	90	970	The Estate's grounds
- Park Suite	3	1 King	90	970	The Estate's grounds
- Daneshill Suite	3	1 King	90	970	Walled garden and 18th-century stable block
- Belvedere Suite	3	1 King	67	720	The Estate's grounds
- Oliver King Parlour Suite	1	1 King	54	582	The Estate and grounds

Guest Room Overview

Guest rooms begin at a comfortable 45 square metres (485 square feet). In the east, south and west wings, Mews Rooms overlook the 18th-century stables, Garden Rooms offer views of the garden or courtyard of the Hotel and Heritage Rooms look out over the estate grounds. The Manor Rooms and Grand Manor Rooms, the latter with park views from the bathtub, are set in the restored Georgian manor house. At 67 square metres (720 square feet), Four Seasons Executive Suites separate the large bedroom from the sitting area and have windows overlooking the courtyard or woodlands.

Suites Overview

In the Georgian manor house, the intimate Oliver King Parlour Suite presents some of the Hotel's finest views. Belvedere Suites offer more space, with a separate bedroom and living area and views of the estate. All a spacious 90 square metres (970 square feet), Daneshill Suites overlook the gardens and picturesque 18th-century stables, while Park Suites, as their name suggests, present prime park views.

Four one-of-a-kind suites add to the choices. The Ellis St. John Suite and William Godson Suite are each situated in the manor house. Set apart in the west wing, the one-bedroom Mildmay Suite is an elegant 135 metres (1,453 square feet), complete with a dining area

for six and sweeping views of the estate. The two-bedroom Royal Suite offers a sumptuous 225 square metres (2,420 square feet) furnished for every need. Its ground-floor location embraces sunset vistas.

FOUR SEASONS EXECUTIVE SUITE

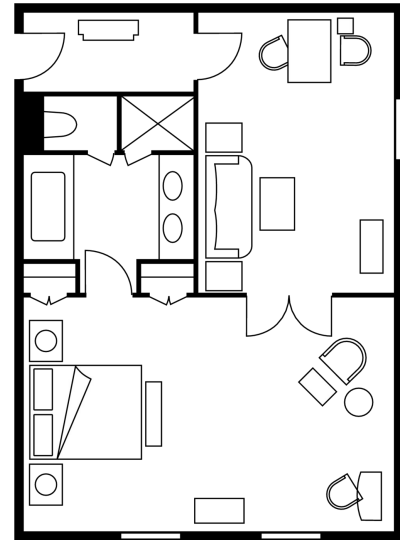
Number 8
Beds King bed
Size 67 m²
720 sq ft

Location

East, South and West Wings

View

Central courtyard and woodlands



HERITAGE ROOM

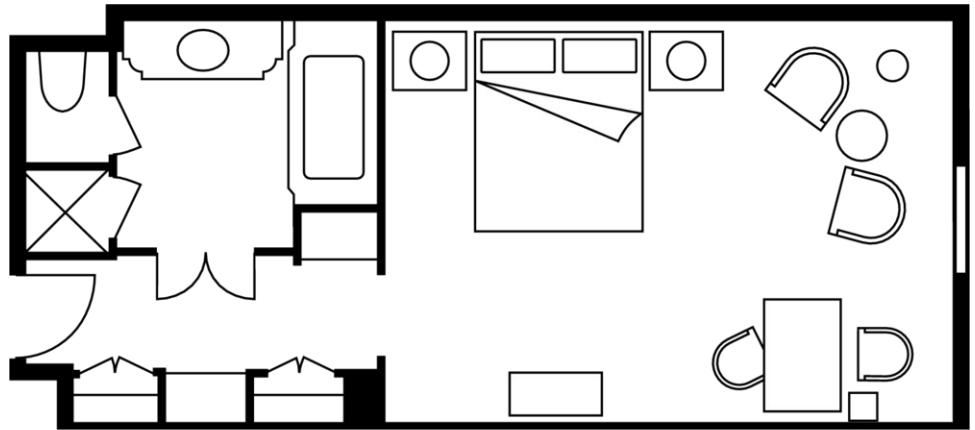
Number 15
Beds King or two twin beds
Size 45 m²
485 sq ft

Location

East and West Wings

View

The Estate's grounds



GARDEN ROOM

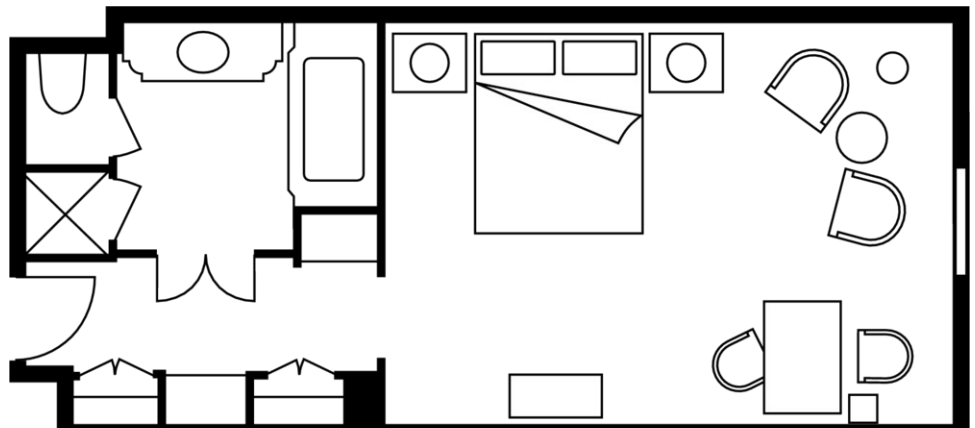
Number 63
Beds King or two twin beds
Size 45 m²
485 sq ft

Location

East, South and West Wings

View

Estate grounds or inner courtyard



MEWS ROOM

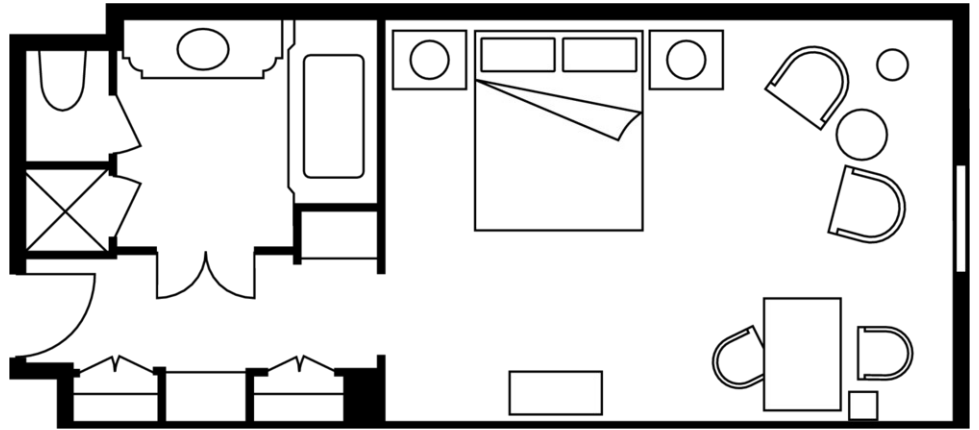
Number 22
Beds King or two twin beds
Size 45 m²
485 sq ft

Location

South Wing

View

The 18th-century stable block



MILDMAY SUITE

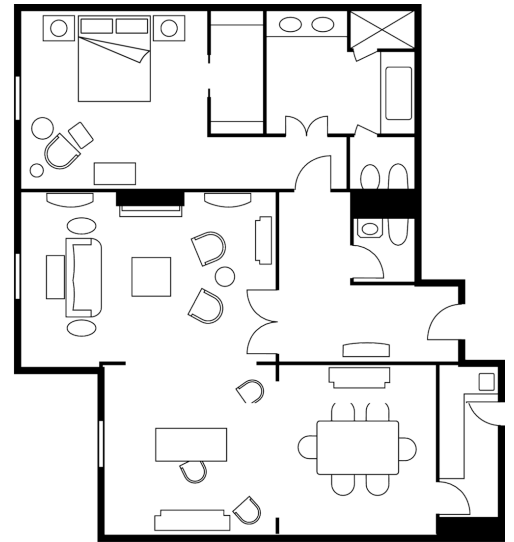
Number 1
Beds King bed
Size 135 m²
1,453 sq ft

Location

West Wing

View

The Estate's grounds



AMENITIES

- All news cable network
- CD player
- Clock radio
- Complimentary newspaper
- Down duvets
- Down pillows
- DVD player
- Fax machine on request
- Hair dryer
- Hypo-allergenic pillows on request
- In-room safe
- Iron and ironing board on request
- Make-up mirror
- Multi-line telephone(s) with voicemail
- Refrigerated private bar
- Satellite television
- Thick terry bathrobes
- Twice-daily housekeeping service
- Wired or wireless Internet access

GUEST SERVICES

- 24-hour In-Room Dining
- 24-hour laundry/dry-cleaning/pressing
- 24-hour multilingual Concierge
- Airport transfers
- Complimentary overnight shoeshine
- Currency exchange service
- Doctor or nurse on call 24 hours
- Non-smoking rooms
- One-hour pressing
- Restaurant
- Safety deposit boxes
- Umbrellas
- Valet parking

VIP GIFTS AND WELCOME AMENITY

Special arrangements can be made for clients to purchase welcome amenities for their VIP guests. Possibilities range from fresh flowers and seasonal fruit plates to a selection of fine wines or beer, petit fours, chocolate fondue, deluxe truffles, special occasion gifts, a spa treatment or a traditional Hampshire Hamper – full of locally made produce such as hand made chocolates, jams, chutneys, honey, shortbread and fruit cake.

DINING HOURS OF OPERATION

Seasons

Breakfast

Sunday 8:00 am - 11:00 am
Monday to Saturday 7:00 am - 11:00 am

Farmers market lunch

Sunday 1:00 pm - 3:00 pm

Dinner

Tuesday to Saturday 6:00 pm - 10:30 pm

Café Santé

Sunday 11:00 am - 4:30 pm
Monday to Saturday 11:00 am - 6:00 pm

The Library

Monday to Sunday 9:00 am - 6:00 pm
Traditional afternoon tea 3:00 pm - 5:00 pm

Bar 1086

Every day 11:30 am - midnight
Lunch (Monday to Saturday) noon - 5:00 pm

Dinner 5:00 pm - 10:30 pm

In-Room Dining

Breakfast 6:00 am - 11:30 am
All-day dining 11:30 am - 11:30 pm
Overnight 11:30 pm - 6:00 am

DINING

At Four Seasons Hotel Hampshire, you are on the doorstep of one of the area's most sought-after restaurants, Seasons, which offers a private dining room for small gatherings. Enjoy fine spirits or wholesome bistro fare at Bar 1086. Meet for elegant afternoon tea in The Library. Pause for delicious spa cuisine after a workout at Café Santé. Or, from In-Room Dining, order a midnight feast or a gourmet picnic lunch to enjoy in the surrounding beauty of Dogmersfield Park. Special menus have also been created just for children.

RESTAURANTS

Seasons

Seasons offers a French-European menu executed with contemporary style and outstanding service. Abundant daylight cascades through French windows framing the glorious views of Dogmersfield Park. An outdoor terrace is available seasonally for breakfast and lunch.

Crafted for each season, the menus combine a wonderful array of choice with a thoughtfully chosen wine list of popular vintages. Ingredients are locally sourced wherever possible, with some items being grown on the Hotel's estate.

Seasons Salon Privé, our adjacent semi-private dining room, is ideal for groups or special parties of up to 24 – either individually catered or with an à la carte restaurant menu.

- Indoor seating: 100

Café Santé

Café Santé, The Spa's café, is the perfect place to unwind after a workout or relax before your treatment. It serves fresh, healthy options in a glasshouse setting overlooking The Spa and Hotel grounds.

- Indoor seating: 24

LOUNGES

The Library

Located in the Manor House, The Library has been restored to its former glory as an elegant, beautifully appointed residents' lounge. Decorated in warm earth tones, The Library boasts an abundance of lush armchairs, supple sofas and coffee tables for relaxation and luxury.

- Indoor seating: 39

Bar 1086

Spacious and comfortable, Bar 1086 features a contemporary style and intimate sense of luxury with a fireplace, crystal chandelier, and wood and stone flooring. Premium spirits are Bar 1086's standard pour, and a diverse selection of wines and vintage champagnes is available by the glass.

- Indoor seating: 38

RECREATION FACILITIES

The on-site recreational facilities at Four Seasons Hotel Hampshire promise an inspiring choice of diversions, from rejuvenation in the full-service spa to an array of country manor house pursuits, from croquet to fishing or falconry. Four Seasons is also able to assist with arranging off-site activities, including golf at a choice of courses.

SPA SERVICES

The Spa is located in the Hotel's picturesque 18th-century stable block, which captures the essence of the estate's historical past. The Grade II-listed stables still feature the original arched gateway, gabled roof and bell turret, and offer magnificent views over the Hotel's 200 hectares (500 acres) of rolling hills and parkland. Accessible via a glass walkway connected to the east wing of the Hotel, the Spa is an oasis of relaxation, offering an unparalleled selection of bespoke treatments and experiences.

FITNESS FACILITIES

Guests can maintain their workout schedule in the inviting and spacious fitness studio, located in the spa complex. It features the latest in Technogym Excite cardiovascular and weight machines; stretching areas and a comprehensive selection of free weights are also available.

POOL

A glass-covered indoor infinity pool is located within the spa complex. Alongside this beautiful 20-metre (66-foot) pool are a sauna and steam rooms, as well as comfortable loungers for relaxation.

TENNIS

Whether it is your passion or simply an additional benefit to your stay – the Hotel's outdoor, all-weather tennis facility offers an irresistible opportunity to hone your skills, surrounded by the utmost in luxury. When you've finished your game or when you need a break between sets, relax in the pavilion and enjoy refreshments with your fellow players while reliving that superb cross-court winner.

GOLF

Oak Park Golf Club

Golf at Oak Park consists of an 18-hole and nine-hole course. The 18-hole Woodland course provides stunning views over the North Hampshire downs as it winds its way through tree-lined fairways, while the nine-hole Village course offers a more gentle golfing challenge.

Hindhead Golf Club

A supreme test of golf, one of the best in the south of England. This course is a pleasure for low to mid-handicaps, and unforgiving for higher handicaps. The greens are superb, in excellent condition and beautifully maintained. Must have a handicap certificate of 20+ on weekends.

Wentworth Club

Wentworth is at the very pinnacle of British golf. Established 75 years ago by Walter George Tarrant, the club provides the ultimate challenge and is recognised as the epitome of golfing status. Wentworth features three 18-hole courses and one 9-hole course, and is now familiar to most golfing aficionados for hosting the British Open, the annual PGA

Tournament and the World Match Play Championships.

RESORT ACTIVITIES

Clay pigeon/skeet shooting

This activity is available to Hotel guests over 16 years of age, upon request. Lessons are available.

Croquet

Croquet was once the sports craze of Victorian England. Today, Four Seasons guests can enjoy this historic sport on the Croquet Lawn, with knowledgeable Guest Services staff available to coach them. Mallets, balls, jacks and hoops are available for use. Children under 14 must be accompanied by an adult.

Equestrian

Hotel guests of all riding abilities will be able to enjoy this activity, which can be booked through the Concierge. Horse-riding lessons are available for both adults and children.

Falconry

At Four Seasons Hotel Hampshire, take part in a sport that has been popular with the English aristocracy for centuries – falconry. Under expert tuition, you'll be introduced to a selection of birds and learn the fundamentals – an exhilarating experience that will bring you into close contact with these magnificent birds of prey. Sessions are tailored to suit participants aged 12 and over.

Fishing

Four Seasons Hotel Hampshire benefits from two lakes on the surrounding land, historically known as the Tundry Ponds. They were the original fishing lakes for the owner of the house, dating back to 1191. The Hotel has fishing rights on one of the lakes and fly fishing for trout and pike are in plentiful supply. The Hotel hosts five fishing platforms and a small fishing facility for equipment storage. The Hotel also provides transportation to the fishing facility for equipment collection.

INCENTIVE ACTIVITIES

Sample itinerary

- Day 1
- Arrival at HotelRelax after your flight or drive.
- Pamper yourself with a rejuvenating treatment in the spa, a beautifully restored stable block dating from the 18th century.
 - Maintain your regimen in the state-of-the-art fitness centre.
 - Carry on the British tradition of afternoon tea in the Estate's grounds.
 - Steal a quiet moment fishing at Tundry Pond.
- EveningAttend a delightful welcome reception followed by a quintessential Hampshire Farmers Market dinner. This menu is themed around the popular Farmers Markets that take place in the area and combine the best of local and organic produce direct from local farms.
-
- Day 2
- MorningBreakfast at your leisure in Seasons restaurant (indoors or on the outdoor terrace), in the Bistro or in-room. Afterwards, enjoy the Hotel's facilities or explore Hampshire's myriad outdoor activities.
- Challenge yourself with a round of golf at the championship Wentworth Club.
 - Browse the antique shops of Hartley Wintney.
 - Visit Royal Berkshire Polo Club for a polo lesson, followed by a champagne lunch.
- Afternoon
- Our gardener will take you into our historical walled garden to teach you how to look after and make the most of your garden.
 - Take an aerial tour of the countryside from a hot-air balloon to see and feel the beauty of historical Hampshire.
- EveningA favourite of the Royal Family: attend evensong at St. George's Chapel, within the grounds of Windsor Castle. Enjoy a reception and dinner at one of the highly acclaimed Michelin starred restaurants on the banks of the River Thames in the charming village of Bray.
-
- Day 3
- MorningBreakfast at your leisure in Seasons restaurant or in-room. Afterwards, enjoy the Hotel's facilities or explore Hampshire's myriad outdoor activities.
- Cruise around the Estate on the Basingstoke Canal, in the Hotel's custom-built canal boat.
 - Go horseback riding on our 200-hectare (500-acre) estate; lessons and hacks are available for all levels of ability.
- Afternoon
- Enjoy a private lunch followed by an afternoon of race-watching at Newbury Racecourse.
 - Rejuvenate with customised treatments in our full-service spa or learn some tricks of the trade with private tuition from one of our highly trained beauty therapists.
 - Hampshire Olympics - Spend a fun afternoon engaged in the traditional sports of archery, clay pigeon shooting (skeet shooting), off-road driving or croquet.
- EveningEnjoy à la carte dining either in Seasons restaurant or at one of

the local restaurants and pubs.

- Day 4 MorningBreakfast at your leisure in Seasons restaurant or in-room. Afterwards, enjoy the Hotel's facilities or explore Hampshire's myriad outdoor activities.
- Visit Jane Austen's house in Chawton, the English village where she wrote many of her famous works.
 - Visit Winchester - see the famous cathedral and browse local shops. This optional day trip includes lunch.
- Afternoon
- Go walking or horseback riding with a private guided tour of our historical grounds.
 - Visit The Vyne, a mansion built in the 16th century for Lord Sandys, Henry VIII's Lord Chamberlain.
- EveningExperience a Royal Tudor banquet. You will have the opportunity to dress up in period costume and enjoy an authentic Tudor menu.
-
- Day 5 DepartureFollowing a farewell brunch in the Hotel's heritage-listed gardens, guests depart at leisure.
-

www.fourseasons.com/hampshire

Rooms	Dimensions		Size		Height		Classroom	Hollow square	U-shape	Theatre	Reception	Banquet rounds	Conference/boardroom
	(m)	(ft)	(m ²)	(sq ft)	(m)	(ft)							
- Four Seasons Ballroom	13.9 x 18.5	45.6 x 60.7	258	2,766	4.4	14.4	110	-	55	260	250	200	60
- Four Seasons Ballroom Pre-function Area	4.1 x 22.9	13.4 x 75.1	94	1,009	3.6	11.8	-	-	-	-	150	40	30
- Mandeville Ballroom	8.4 x 14.5	27.6 x 47.6	122	1,310	3.8	12.5	60	-	36	140	120	100	40
- Beckington Room	4.7 x 10.1	15.4 x 33.1	47	510	3.5	11.5	30	-	18	58	40	48	25
- Shrewsbury Room	5.3 x 9.4	17.4 x 30.8	50	536	2.5	8.2	-	-	15	44	40	36	25
- Bathurst Room	5.1 x 9.6	16.7 x 31.5	49	526	3.8	12.5	-	-	-	30	20	24	15
- Boardroom	6.5 x 3.6 m	25 x 11.5	26	280	2.5	8.2	-	-	-	-	-	-	10