



## Quick Reference Guide

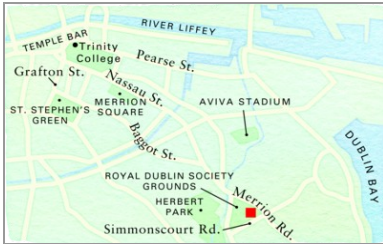
---

Last updated May 3, 2012 | For additional information please contact the hotel directly

---

Four Seasons Hotel Dublin  
Simmons Court Road, Dublin, 4, Ireland  
Tel 353.1.665.4000 | Fax 353.1.665.4099 | Res 353.1.665.4676

[www.fourseasons.com/dublin](http://www.fourseasons.com/dublin)



Simonscourt Road  
Dublin 4, Ireland  
Tel 353.1.665.4000  
Fax 353.1.665.4099  
Res 353.1.665.4676

#### AIRPORT

- Dublin International Airport (DUB):  
25 minutes (19 kilometres/12 miles)

#### TABLE OF CONTENTS

- 2 *Introduction*
- 4 *Destination*
- 10 *Conference Facilities*
- 16 *Guest rooms, Suites and Private Residences*
- 22 *Dining*
- 23 *Recreational Facilities*
- 26 *Incentive Activities*
- 28 *Appendix: Conference Chart*

Dublin captivates as a city of history, with its Gothic cathedrals and Georgian gardens, and as a city of culture and warmth, with its legendary literary heritage, vibrant music and lively pubs. Perfectly positioned to share the best of the city, Four Seasons captures the magical character of Dublin.



Located in a prestigious and vibrant neighbourhood, the six-storey Four Seasons Hotel Dublin offers a contemporary interpretation of an Irish manor home, with a warm red-brick exterior and manicured gardens. Indoors, the Hotel features a light and airy lobby and 197 spacious guest rooms and suites – some with private terraces, all with expansive views and sunlight streaming through Georgian-style windows. The décor blends fresh modern chic with inviting and comfortable traditional Irish style.

Adorned with huge chandeliers of Irish crystal, the Ballroom easily accommodates any major event, from contemporary celebrations to high-security business meetings. Other venues include another smaller Ballroom for more intimate occasions, and four well-appointed meeting rooms. Five drinks and dining venues are a favourite of Dublin residents and international visitors alike. Meet friends, family or colleagues at the Lobby Lounge in the heart of the Hotel, sample authentic Irish drinks at The Bar, or enjoy stylish tapas and a glass of wine at ICE. Stop by The Café for casual fare or savour more upscale dining at Seasons.

Exceptional amenities like the sunlit lap pool, state-of-the-art health club and full-service spa create an atmosphere of resort living with all the conveniences of the energetic city.

#### TRANSPORTATION

Dublin Airport is located 19 kilometres (12 miles) from the Hotel and is served by a range of major airlines. Direct flights are available from Dublin to destinations in the United Kingdom, Europe, United Arab Emirates and North America. Taxi and coach services to the city are available on the Arrivals level at Dublin Airport. In addition, all major car rental firms are represented at the airport. Limousine transfers may be arranged through the Hotel's Concierge. For drivers, valet parking is available at the Hotel.

## WEATHER CHART

Month	°C		°F	
	Highs/Lows	Highs/Lows	Highs/Lows	Highs/Lows
January	7	/ 2	45	/ 36
February	7	/ 2	45	/ 36
March	9	/ 3	48	/ 37
April	12	/ 4	54	/ 39
May	15	/ 6	59	/ 43
June	17	/ 8	63	/ 46
July	21	/ 10	70	/ 50
August	18	/ 10	64	/ 50
September	16	/ 9	61	/ 48
October	13	/ 7	55	/ 45
November	10	/ 4	50	/ 39
December	8	/ 3	46	/ 37

## DESTINATION

On the east coast of Ireland, where the River Liffey enters the Irish Sea, Dublin is the capital of the Republic of Ireland. Around 1.1 million people – nearly one-third of the Irish population – live in the Greater Dublin Area. Known for its distinctive Georgian architecture and beautiful garden squares, the city still retains the charm and intimacy of the small town that was the birthplace of Wilde, Yeats and Beckett. Four Seasons provides an ideal base for exploring the sophisticated shops of Grafton Street, delving into its thousand-year-old history or venturing out to the Irish countryside.

## WEATHER

Relatively mild temperatures are the norm for Dublin, year round. Warm and dry weather prevails with the onset of summer, from May through September. Winter is characterised by short days, and temperatures rarely dip below freezing. Rainbows may accompany the occasional rain showers, offering a breathtaking reprieve.

## LOCAL ATTRACTIONS AND ACTIVITIES

At Four Seasons, you enjoy a unique vantage point from which to explore the sights, sounds and experiences around you. We hope the highlights of local attractions below help simplify your planning. Please let us know how else we can assist you.

### *Within a 5-minute walk of the Hotel*

#### Royal Dublin Society Showgrounds:

- The Royal Dublin Society is host to a wide range of exhibitions, artists and concerts, but the most important date in its calendar is the Dublin Horse Show, which is held every August.

#### Ballsbridge:

- The Hotel is located in the residential neighbourhood of Ballsbridge, which features manicured private gardens, fascinating architecture and several local pubs and restaurants. The show grounds of the Royal Dublin Society also make for an interesting stroll. Located adjacent to the Hotel, the grounds are home to exciting events, trade fairs and the annual Dublin Horse Show.

#### Herbert Park:

- The lush green space of Herbert Park is just a short stroll from the Hotel. With a large duck pond and lovely gardens – including semi-tropical plants and a wide variety of roses – the park is an excellent place for strolling, jogging or simply relaxing. There is also an excellent activity playground for children.

### *Within a 30-minute walk of the Hotel*

#### Historical Walking Tours of Dublin :

- In just two hours this award-winning and entertaining “seminar on the street”, conducted by history graduates of Trinity College, explores the main features of Irish history. Learn about the development of Dublin city, the influence of the American and French revolutions, the Great Famine from 1845 to 1849, the 1916 Rising, the War of Independence, Partition and current peace negotiations. The tour commences at the Front Gate of Trinity College.

*May to September: Daily at 11:00 am and 3:00 pm*

*October and April: Daily at 11:00 am*  
*November to March: Friday, Saturday and Sunday at 11:00 am*

*Within a 10-minute drive of the Hotel*

Trinity College:

- Trinity College was founded by Queen Elizabeth I in 1592 on the site of an Augustinian monastery suppressed by her father, Henry VIII, in 1536. Trinity is the oldest and most prestigious university in Ireland. The campus comprises many beautiful buildings and is home to the famous Book of Kells, a 9th-century illuminated manuscript, as well as the books of Durrow and Armagh. These treasures are on display in the spectacular Old Library, which houses over 200,000 old books.

National Museum of Ireland – Archaeology and History:

- The National Museum of Ireland combines several collections of Irish artifacts and masterpieces. The collections include the Treasury (which exhibits the Tara Brooch, the Cross of Cong and the Ardagh Chalice), Prehistoric Ireland, Viking Ireland, the Road to Independence (1916-1921) and Ancient Egypt. The Celtic Gold collection is a stunning display of gold artifacts dating from Ireland's ancient pre-Celtic past.

Natural History Museum:

- Known affectionately by Dubliners of a previous generation as the "Dead Zoo," the Natural History Museum was opened in 1857 by Dr. David Livingstone. It is crammed with antique glass cabinets displaying stuffed animals from all over the world. The museum has remained virtually unchanged since Victorian times.

National Library of Ireland:

- Founded in 1877, the National Library is the largest public library in Ireland. It houses over 500,000 books, as well as maps, prints and manuscripts. The library is also home to the Office of the Chief Herald. The library's public service counter is manned by helpful officials. Admission is free.

National Gallery of Ireland:

- The National Gallery is home to over 2,500 paintings and over 10,000 other items, including drawings, prints and sculpture. It features an extensive collection of Irish art (17th to 20th centuries) and of works from the major schools of European art (13th to 20th centuries). The Milltown Rooms house a collection of exquisite paintings from Russborough House. The new Millennium Wing (opened in 2001) provides a purpose-built exhibition space for visiting exhibits.

RHA Gallagher Gallery:

- Built to replace the Royal Hibernian Academy of Art, the RHA Gallagher Gallery is one of Ireland's main centres for modern and contemporary art, with constantly changing exhibitions.

National Concert Hall:

- Home of the National Symphony Orchestra, the National Concert Hall is Ireland's most prestigious music venue. It features a program of visiting international artists and orchestras.

Gaiety Theatre:

- Founded in 1871 by John Gunne, this theatre continues to host all manner of entertainment, from classic Irish plays and West End shows to concerts and variety acts, as well as pantomimes and opera. The Gaiety Theatre is also used as a late-night weekend club.

Book of Kells and the Old Library:

- Housed in the Old Library, the Book of Kells is widely regarded as the most significant illuminated manuscript to have emerged from Europe's Middle Ages. This Latin version of the gospels of the New Testament contains lavish and unequalled illustrations. It is housed in its own museum with interpretive displays providing historical context, as well as a gift shop.

Custom House Visitor Centre:

- This majestic building, situated on the quays of the river Liffey, is one of the finest examples of Georgian architecture in the city. The Custom House was designed in 1791 by James Gandon and has played an important role in Dublin's social, economic and political history. One of the most dramatic events was the fire in 1921, during the War of Independence, which caused extensive damage. The Visitor Centre describes the history of the Custom House and related events in Irish history.

Grafton Street:

- Vibrant and spirited, Grafton Street is alive and entertaining at any time of the day or evening. A pedestrian thoroughfare through the centre of historic Dublin, Grafton Street is both the main shopping zone for the city and the best place to watch impromptu street performers and musicians. At one end of the street is the lovely St. Stephen's Green; at the other, Trinity College and the famous statue of Molly Malone.

*Within a 15-minute drive of the Hotel*

Andrew's Lane Theatre:

- One of only a few specifically commercial theatres in Dublin, Andrews Lane is a well-established venue, hosting both touring provincial companies and international acts, who offer dramatic and musical works.

St. Patrick's Cathedral:

- Founded in 1191, and built on the site of an ancient spring where it is said that St. Patrick baptized the first Christian converts in Ireland, this is the largest church in Ireland. The cathedral fell into disrepair in the 20th century but was restored thanks to the great generosity of the Guinness family. "Living Stones" is a permanent exhibition that celebrates the place of St. Patrick's Cathedral in the life of the city. The cathedral also has a choir school, founded in 1432, and the choristers sing two services in the cathedral daily.

Christ Church Cathedral:

- The cathedral, founded in 1038 by King Sitric Silkenbeard, is the oldest building in Dublin and sits in the heart of the original medieval city. The church was rebuilt in stone by the Anglo-Norman invaders in the 12th century. It is now the metropolitan church of the Church of Ireland and the seat of the Archbishop of Dublin. Christ Church Cathedral was renovated extensively in the 19th century by the Roe family of

distillers, and possesses the finest and largest crypt in the country. There are regular song services by the cathedral's choir.

Temple Bar:

- Temple Bar is an exciting enclave with pubs, restaurants, shops and galleries. The cobbled streets between Dame Street and the River Liffey are named after Sir William Temple, who acquired the land in the early 1600s. The term "bar" means riverside path.

*Within a 20-minute drive of the Hotel*

Dublin Castle:

- Dublin Castle is located at the heart of the old medieval city, and for several centuries it was the residence of the Lord Lieutenant of Ireland. Some vestiges of the original 13th-century castle and moat can be seen during the guided tours. The remainder of the Castle conforms to the shape of the medieval structure, but combines various styles of architecture, as well as reconstructions over the course of seven centuries. On view are the State Apartments, the 19th-century Gothic Chapel Royal and the Undercroft. Visitors can also enjoy the Vault Restaurant, Heritage Centre and craft shop.

Guinness Storehouse:

- The visitor's centre at the St. James's Gate Brewery is devoted to the story of the world-famous stout, Guinness. The self-guided visit includes information on the life of the original Arthur Guinness, the brewing process, advertising, cooperage, transport and Guinness around the world. The price of admission also includes a complimentary pint at the Gravity Bar on the seventh floor (which offers a superb 360-degree view of the city).

Dublin Writers Museum:

- This museum celebrates the great literary heritage of Dublin city. It features the lives and works of Joyce, Wilde, Swift, Sheridan, Shaw, Yeats and Beckett. The museum is situated in a beautiful Georgian house noted for its decorative stained glass windows. The museum also has a special room dedicated to children's literature.

Hugh Lane Gallery:

- Founded by Sir Hugh Lane in 1908, the Hugh Lane Gallery is located in one of Dublin's finest Georgian buildings, formerly the townhouse of Lord Charlemont. The gallery houses an extensive collection of 19th- and 20th-century pictures from modern masters, including many wonderful Impressionist works. Sir Hugh Lane died on the Lusitania in 1915 and his collection is now divided between the Hugh Lane Gallery and the National Gallery in London. The gallery also houses a permanent exhibit dedicated to the artist Francis Bacon. The contents of his Kensington studio were bequeathed to the gallery after his death, and the studio was faithfully reconstructed on site.

Abbey Theatre:

- Home to the National Theatre of Ireland, this building also houses the Peacock Theatre. The box office is open Monday to Saturday, 10:30 am to 7:00 pm.

Gate Theatre:

- Since its foundation in 1929 by Hilton Edwards and Michael Mac Liammoir - who were, in fact, English - the theatre has become highly cosmopolitan. It has traditionally

shown predominantly European and American dramas, and the Irish content is distinctly Anglo. Orson Wells and James Mason made their acting debuts here. One of the first plays shown here was Oscar Wilde's "Salome."

Leopardstown Racecourse :

- Leopardstown Racecourse, modelled on Sandown Racecourse in England, was built by Captain George Quin. Since its completion in 1888, it has become one of the foremost racecourses in Europe, due not only to the quality of racing, but also to the facilities.

The Royal Hospital Kilmainham/Irish Museum of Modern Art:

- Built between 1680 and 1684, the Royal Hospital is Ireland's finest 17th-century building. It was founded as a home for wounded soldiers and retained this role until 1927, after which the building fell into serious decline. In 1991 a major restoration project was undertaken and the building was reborn as the Irish Museum of Modern Art. Visitors may also tour the apartments of the Master of the Hospital, including the Banqueting Hall, the exquisite Baroque chapel and the formal French gardens.

Kilmainham Gaol:

- This was once the principal jail in Ireland, and agitators, nationalists and leaders of successive rebellions against English rule were imprisoned here over the course of two centuries. They included Robert Emmet, Thomas Francis Meagher, Charles Stewart Parnell, Eamon DeValera and the leaders of the 1916 Rising. The prison is unoccupied today but provides visitors with a feeling of what it would have been like to be confined here. The visit includes a guided tour, an audiovisual presentation and an exhibition.

*Within a 30-minute drive of the Hotel*

Croke Park:

- Croke Park is Ireland's largest stadium, seating 82,300, and is home to the Gaelic Athletic Association (GAA). Founded in 1884, the GAA is dedicated to promoting the games of hurling, football, handball, rounders, and camogie.

Phoenix Park Visitor Centre:

- Phoenix Park is one of the world's largest enclosed city parks, covering over 200 hectares (700 acres). The park includes gardens, lakes, a horse racing track, a motor racing track, a cricket pitch, polo grounds, a football pitch, a hurling pitch and the Zoological Gardens. The Visitor Centre explores the history of the park from 3,500 BC to the present. Within the park is the official residence of the President of Ireland, Aras an Uachtarain, formerly the Viceregal Lodge.

*Within a 45-minute drive of the Hotel*

Coastal road south of Dalkey:

- South of Dalkey, the coastal road climbs uphill before tumbling down into the winding leafy lanes around Killiney Village. The route offers one of the most scenic vistas on this stretch of the east coast. Howth Head is clearly visible to the north, with Bray Head and the foothills of the Wicklow mountains to the south.

*Within a 1-hour drive of the Hotel*

Powerscourt Estate Gardens:

- The gardens of Powerscourt House are probably the finest in Ireland, due to both their design and dramatic setting at the foot of the Great Sugarloaf Mountain. Originally built in 1731 on the site of a Norman castle, the house was designed by Richard Castle. The gardens are Italianate, with a large lily-padded lake and whimsical statuary.

The Curragh:

- Ireland has a strong horse-racing culture, and thanks to its non-elitist image, the sport is enjoyed by all. Much of the thoroughbred industry centres around the Curragh, a grassy plain in county Kildare, which stretches unfenced for more than 2,000 hectares (4,942 acres). Most of the major flat races, including the Irish Derby, take place at the Curragh racecourse just east of Kildare.

*Within a 1.5-hour drive of the Hotel*

Wicklow Mountains:

- There is little traffic in the Wicklow mountains to disturb the enjoyment of the exhilarating scenery of rock-strewn glens, high forest and bogland where heather gives a purple sheen to the land.

Glendalough:

- The steep wooded slopes of Glendalough, the "valley of the two lakes," are home to one of Ireland's most atmospheric monastic sites. Most of the buildings date from the 8th to the 12th centuries, and many were restored in the 19th century.

#### CONFERENCE FACILITIES OVERVIEW

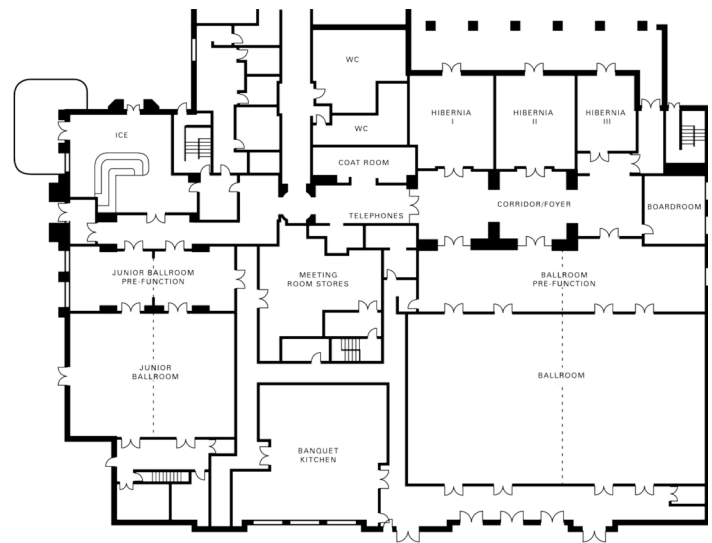
Total Space	1,404 m <sup>2</sup> 15,112 sq.ft.
Largest Ballroom	555 m <sup>2</sup> 5,974 sq.ft.
Meet and Feed (max. capacity)	350
Breakouts	4
Banquet (max. capacity)	504
Outdoor Banquet (max. capacity)	-
Private Dining (max. capacity)	12

#### CONFERENCE FACILITIES

Four Seasons is renowned as the setting for Dublin's most prestigious business and philanthropic events – for groups of 10 to 550. Encompassing approximately 1,400 square metres (15,000 square feet), the function space reflects an atmosphere of residential luxury, with fine upholstery and soft furnishings, mahogany-finished furniture and grand pendant chandeliers of Irish crystal.

The Ballroom and Junior Ballroom – both complete with pre-function areas – offer easy access on the ground floor and are suitably wired for high-tech needs. Four smaller meeting rooms are ideally suited to small to mid-sized private gatherings; three of these open to a covered colonnade and beautifully landscaped courtyard that is perfect for open-air breaks or receptions. Dedicated event coordinators ensure flawless proceedings from start to finish.

#### Lobby level



#### TECHNICAL ASSISTANCE

Four Seasons Hotel Dublin features the latest in technology and audiovisual presentation equipment.

Special arrangements can be made to fulfill any request, and the standard inventory includes:

- Lecterns
- Overhead projectors
- Data projectors
- LCD colour display panels
- Slide projectors
- Equipment necessary for rear projection and multi-image dissolve programming
- Video recorders
- Players and projectors
- Screens, flipcharts, easels and marker boards
- Wired or wireless Internet access in meeting rooms

#### MUSIC AND ENTERTAINMENT

Our team of Conference Service Managers can arrange music and entertainment to

complement any part of your function or event.

Dublin is the centre of a lively music and entertainment scene, and a great diversity of local talent is available. Especially popular are Irish folk singers and those who specialise in traditional Irish music.

#### RECEIVING AND MAINTENANCE

The Hotel features a full-service shipping and receiving office. Easy access is available on the lower level of the Hotel. The truck dock is 37 square metres (398 square feet). There is a dedicated receiving manager on site to facilitate the easy acceptance of materials for conference planners.

All packages should be sent to the attention of a group's name and its Conference Service Manager. They will be stored in a separate conference storage area. Limited space is available for the storage of large items. Please time shipping to the date of your arrival.

#### *Maintenance*

The Engineering Department is available 24 hours a day for general assistance with lighting, room temperature control and minor repairs.

#### DESTINATION MANAGEMENT

Contact the Hotel's Conference Service Department for detailed information.

Dublin Convention Bureau is also an information resource for planning a conference, meeting or incentive in the Greater Dublin Region.

#### BUSINESS SERVICES

Around the clock, Four Seasons can assist you with business, entertainment or travel arrangements through the Business Center and resourceful, multilingual Concierge.

- 24-hour business services
- Audiovisual equipment
- Cellular telephones
- Computers
- Express check-in/check-out
- Secretarial service
- Translation and interpretation service
- Wired or wireless Internet access in meeting rooms

#### SPOUSE PROGRAMMES

The Hotel offers many activities to interest the spouses of meeting participants, including tours of Dublin and the surrounding area:

- Antique shopping
- Dublin pub tours
- Viewing of the Book of Kells at Trinity College
- Day trips to elegant gardens, castles and historic homes
- Golfing
- Trips to charming seaside towns
- Visits to the Waterford crystal factory
- Hiking and sight-seeing in the lovely Wicklow Mountains

#### CHILDRENS AND FAMILY PROGRAMMES

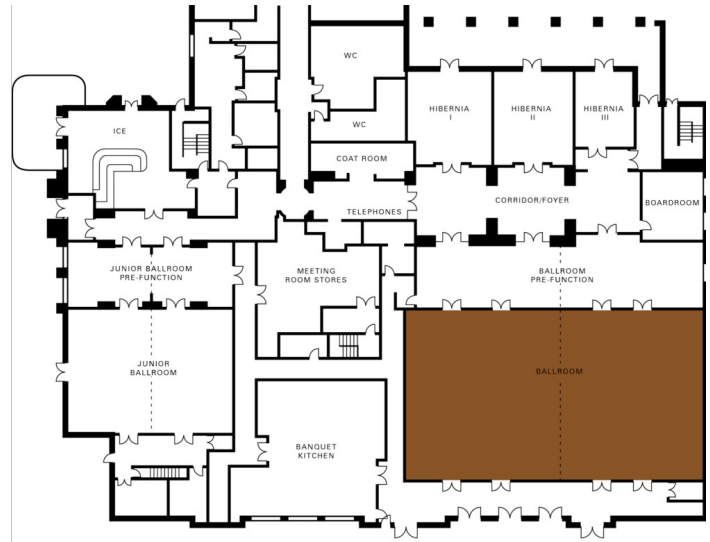
We would be pleased to help arrange appropriate activities for visiting families.

**THE BALLROOM**

Dimensions	18.2 x 30.5 m 60 x 100 ft
Size	555 m <sup>2</sup> 5,974 sq.ft.
Height	5.2 m 17 ft

*Capacities*

Classroom	350
Hollow square	100
U Shape	80
Theatre	550
Reception	600
Banquet Rounds	450

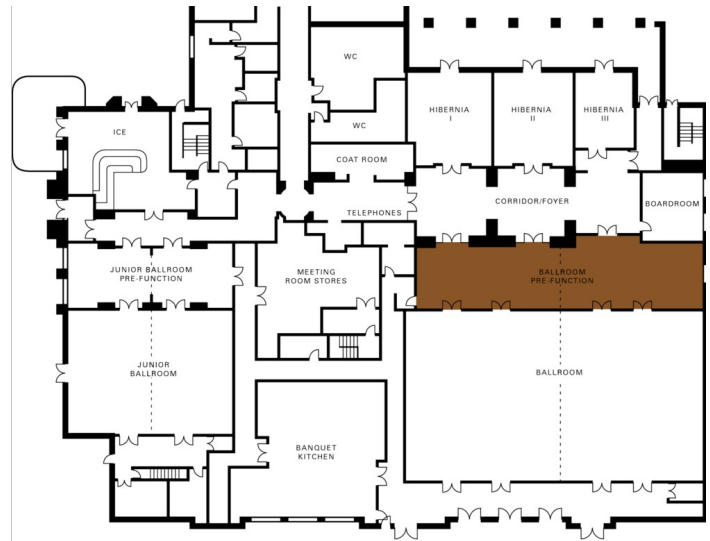


**BALLROOM PRE-FUNCTION**

Dimensions	6.3 x 30 m 21 x 98 ft
Size	189 m <sup>2</sup> 2,034 sq.ft.
Height	4 m 13 ft

*Capacities*

Reception	200
-----------	-----

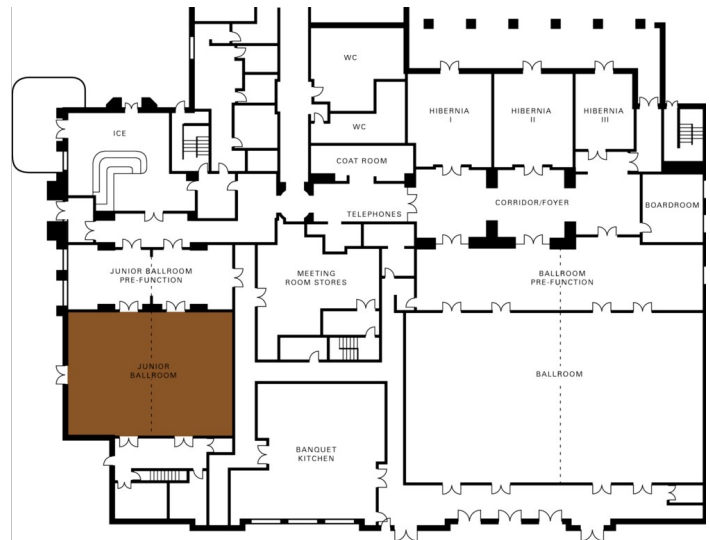


**JUNIOR BALLROOM**

Dimensions	13.1 x 17.7 m 43 X 58 ft
Size	232 m <sup>2</sup> 2,497 sq.ft.
Height	4 m 13 ft

*Capacities*

Classroom	140
Hollow square	60
U Shape	60
Theatre	210
Reception	230
Banquet Rounds	180

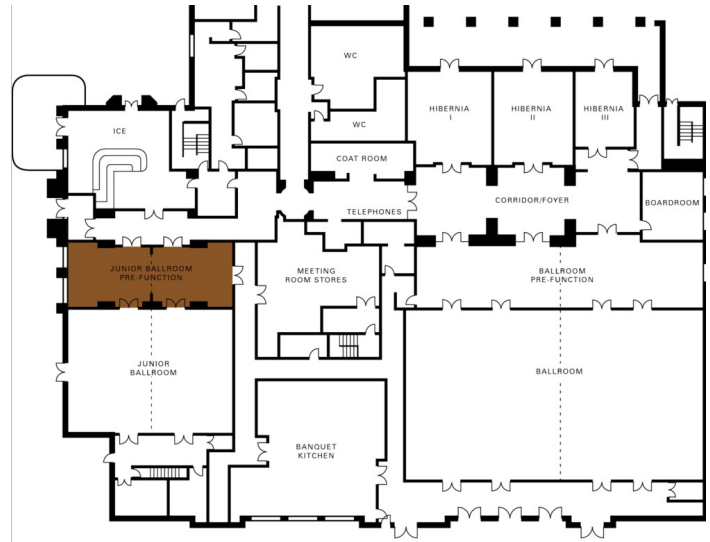


**JUNIOR BALLROOM PRE-FUNCTION**

Dimensions 6.3 x 17.5 m  
21 x 47 ft  
Size 110 m<sup>2</sup>  
1,184 sq.ft.  
Height 4 m  
13 ft

*Capacities*

Reception 80

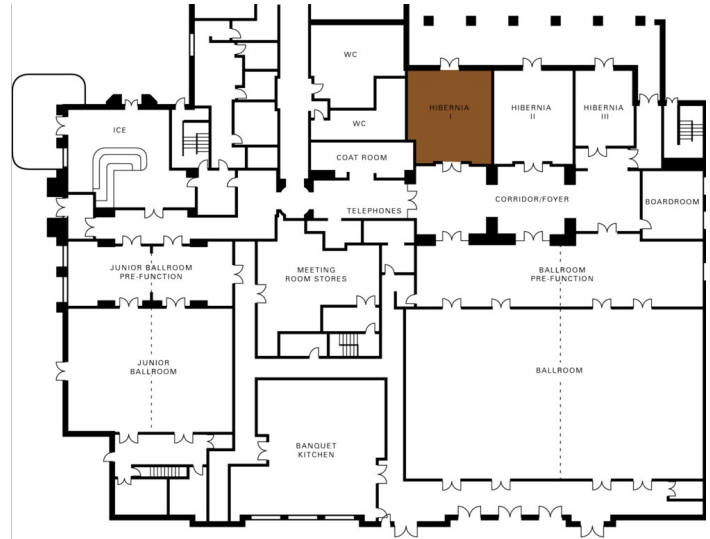


**HIBERNIA I**

Dimensions 7.5 x 9.7 m  
24.6 x 32 ft  
Size 73 m<sup>2</sup>  
786 sq.ft.  
Height 3.1 m  
10 ft

*Capacities*

Classroom 40  
Hollow square 30  
U Shape 24  
Theatre 50  
Reception 50  
Banquet Rounds 50

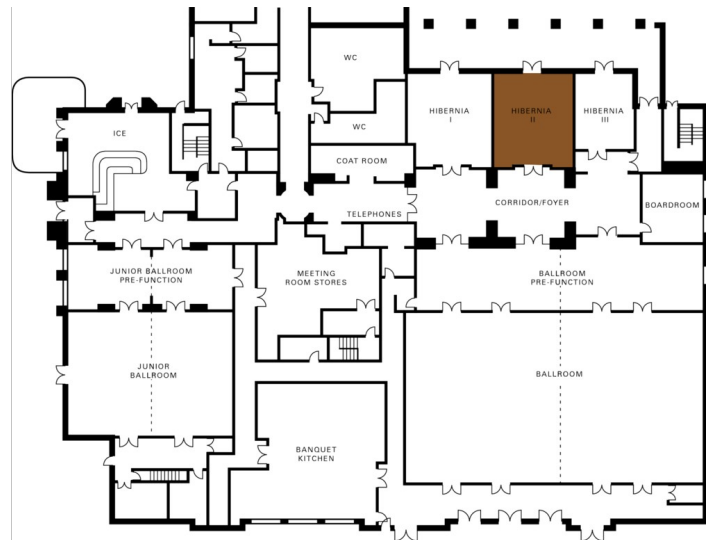


**HIBERNIA II**

Dimensions 8.3 x 9.7 m  
27 x 32 ft  
Size 86 m<sup>2</sup>  
926 sq.ft.  
Height 3.1 m  
10 ft

*Capacities*

Classroom 40  
Hollow square 30  
U Shape 24  
Theatre 50  
Reception 50  
Banquet Rounds 50

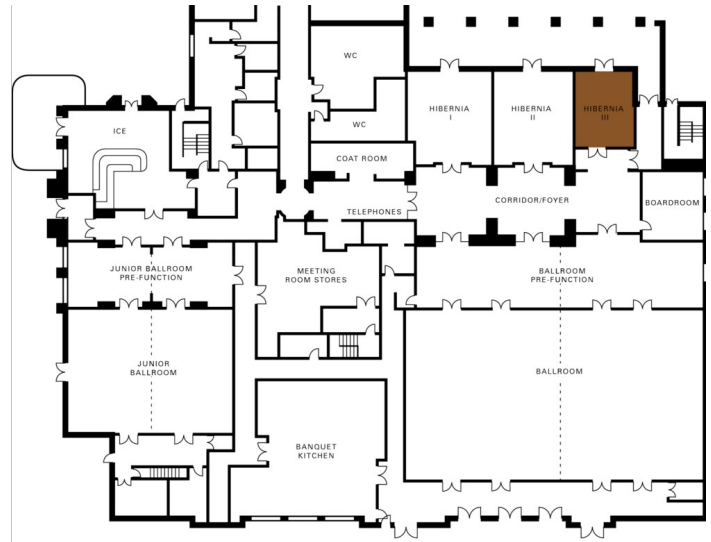


**HIBERNIA III**

Dimensions	6.2 x 7.7 m
	20 x 25 ft
Size	48 m <sup>2</sup>
	517 sq.ft.
Height	3.1 m
	10 ft

*Capacities*

Classroom	21
Theatre	32
Reception	30
Banquet Rounds	20
Boardroom	14

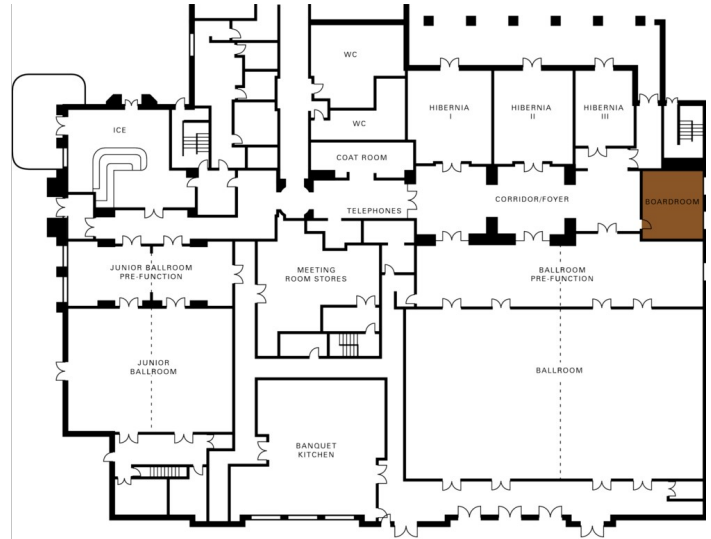


**BOARDROOM**

Dimensions	6 x 7.2 m
	20 X 24 ft
Size	43 m <sup>2</sup>
	463 sq.ft.
Height	3.1 m
	10 ft

*Capacities*

Boardroom	16
-----------	----



### GUEST ROOMS, SUITES AND PRIVATE RESIDENCES OVERVIEW

Enjoy a restful, productive stay in an atmosphere blending tradition and technology. With some of the Dublin's most spacious accommodations, Four Seasons offers 197 guest rooms and suites, some with private terraces. Windows open to expansive views of the surrounding cityscape and the Hotel's courtyard – beautifully landscaped and brilliant with greenery.

With consummate high-tech convenience, amenities include multi-line speakerphones, voice mail and data port for high-speed Internet access, international satellite television and a DVD/CD player. Signature Four Seasons marble bathrooms include a deep soaking tub, separate glass-walled shower and a WC with a telephone in a separate alcove.

<i>Room Category</i>	<i>#</i>	<i>Beds</i>	<i>Size (m<sup>2</sup>)</i>	<i>View (sq ft)</i>	<i>View</i>
- Deluxe Room	114	1 King or 2 twin	41	447	Landscaped gardens or Ballsbridge and Donnybrook neighbourhoods
- Superior Room	24	1 King or 2 twin	41	447	Ornate courtyard adjacent to the showgrounds of the Royal Dublin Society, or homes in the surrounding neighbourhood
- Moderate Room	5	1 King or 2 twin	41	447	Royal Dublin Society showgrounds and Simmonscourt Road
- Premium Room		1 King or 2 twin	51	548	Courtyard adjacent to the showgrounds of the Royal Dublin Society or the surrounding neighbourhood
- Four Seasons Executive Suite	26	1 King	83	895	Dublin's charming cityscape and the surrounding area
- Four Seasons Junior Suite	14	1 King	53 – 77	570 – 830	Hotel grounds and ornate courtyard
- Presidential Suite	1	1 King	250	2,691	Landscaped courtyard, Royal Dublin Society showgrounds and roofscape of Dublin
- Pembroke Suite	3	1 King	165	1,776	Landscaped grounds and roofscape of Dublin
- Deluxe Suite	10	1 King or 2 twin	101	1,094	Landscaped grounds and roofscape of Dublin
- Lansdowne Suite		1 King	83	895	Dublin's charming cityscape and the surrounding Ballsbridge neighbourhood
- Four Seasons Family Suite		1 King	85	915	Dublin's charming cityscape and the surrounding area

#### *Guest Room Overview*

The 143 generously sized guest rooms at Four Seasons have been thoughtfully designed with either king-size or European twin beds. Many open onto views of the Royal Dublin Society's show grounds, the landscaped gardens and ornate courtyard, or Dublin's leafy cityscape. The Moderate and Superior Rooms occupy the lower three floors. Deluxe

Rooms, Four Seasons Junior Suites and Four Seasons Executive Suites are located throughout the Hotel. A number of the Four Seasons Executive Suites include private terraces with sweeping vistas.

#### *Suites Overview*

The 54 beautifully appointed suites have been carefully designed to maximise the Hotel's lovely views. Deluxe Suites include a spacious bedroom separated by a French door from the large living room, to permit work and rest in privacy and comfort. Premium Suites offer exceptional space for business, entertaining and relaxing, including a dining area for formal dinner parties and a well-equipped pantry. On the fourth floor, the lavish Presidential Suite overlooks delightful vistas of the landscaped grounds and the city beyond. Features include an expansive living room that provides an outstanding setting for entertaining, with several conversation areas; a private dining room for eight; a fully equipped kitchen; and a master bedroom with a walk-in closet and a balcony.

**FOUR SEASONS EXECUTIVE SUITE**

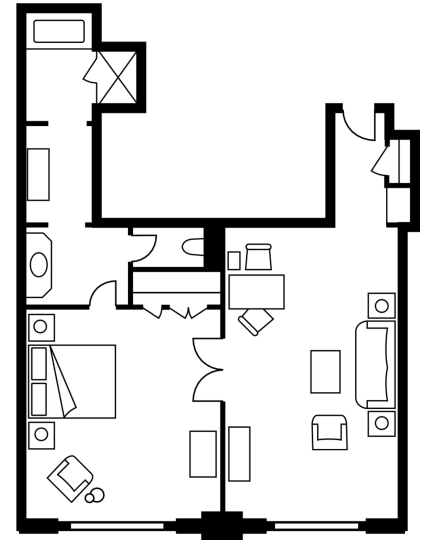
Number 26  
Beds King bed  
Size 83 m<sup>2</sup>  
895 sq ft

*Location*

Throughout the Hotel

*View*

Dublin's charming cityscape and the surrounding area



**FOUR SEASONS JUNIOR SUITE**

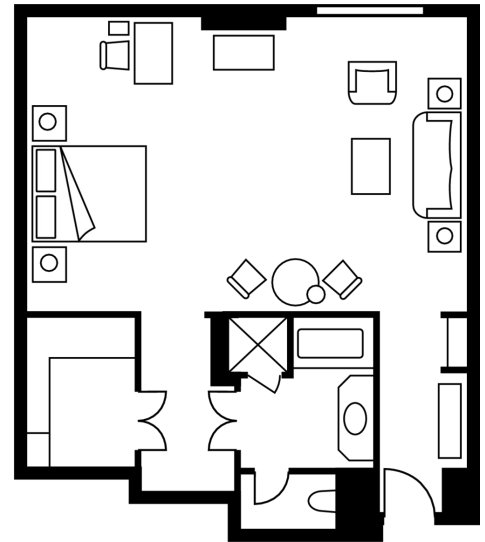
Number 14  
Beds King bed  
Size 53 – 77 m<sup>2</sup>  
570 – 830 sq ft

*Location*

Throughout the Hotel

*View*

Hotel grounds and ornate courtyard



**DELUXE ROOM**

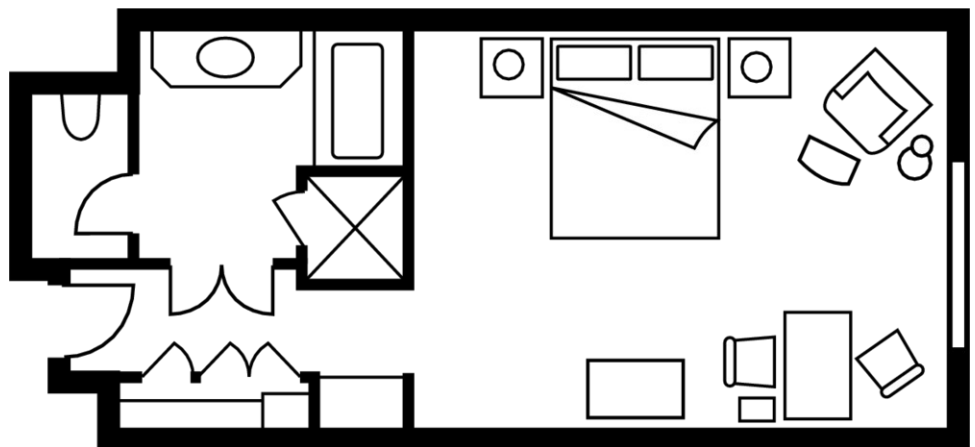
Number 114  
Beds King or two twin beds  
Size 41 m<sup>2</sup>  
447 sq ft

*Location*

Throughout the Hotel

*View*

Landscaped gardens or Ballsbridge and Donnybrook neighbourhoods



**SUPERIOR ROOM**

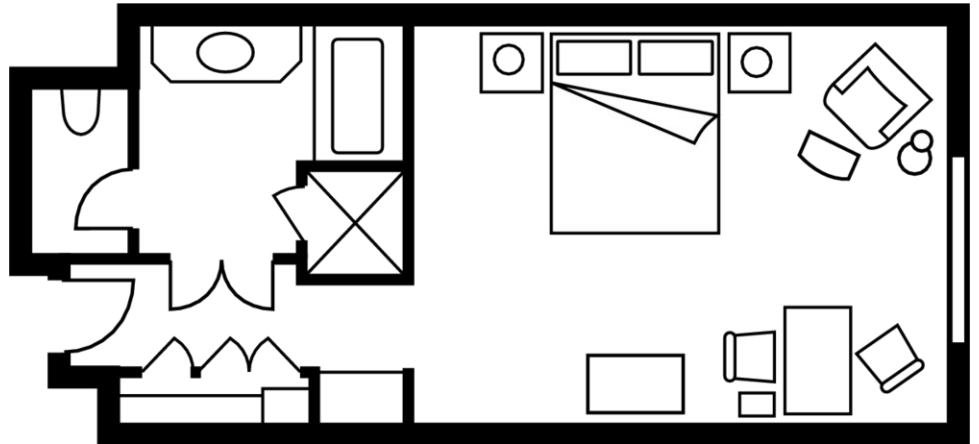
Number 24  
Beds King or two twin beds  
Size 41 m<sup>2</sup>  
447 sq ft

*Location*

1st and 2nd floors

*View*

Ornate courtyard adjacent to the showgrounds of the Royal Dublin Society, or homes in the surrounding neighbourhood



**PRESIDENTIAL SUITE**

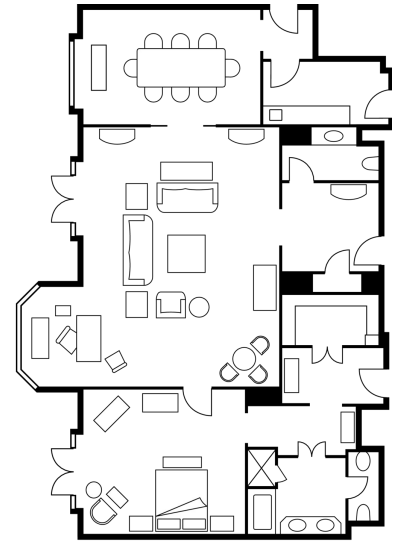
Number 1  
Beds King bed  
Size 250 m<sup>2</sup>  
2,691 sq ft

*Location*

4th floor

*View*

Landscaped courtyard, Royal Dublin Society showgrounds and roofscape of Dublin



**PEMBROKE SUITE**

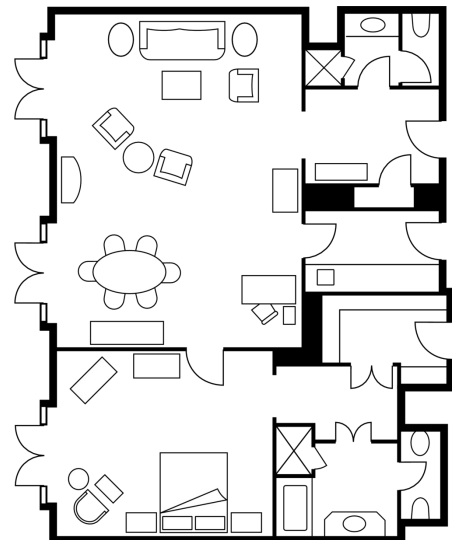
Number 3  
Beds King bed  
Size 165 m<sup>2</sup>  
1,776 sq ft

*Location*

1st, 2nd and 3rd floors

*View*

Landscaped grounds and roofscape of Dublin



**DELUXE SUITE**

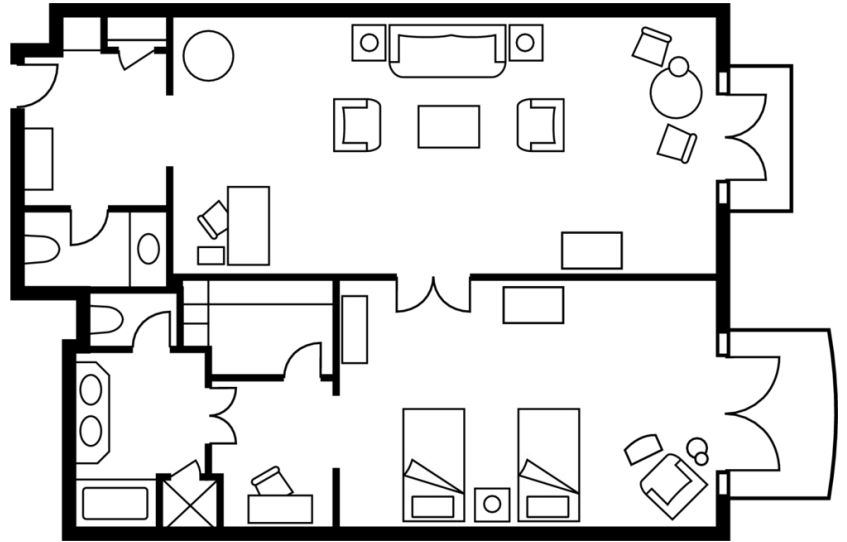
Number 10  
Beds King or two twin beds  
Size 101 m<sup>2</sup>  
1,094 sq ft

*Location*

Throughout the Hotel

*View*

Landscaped grounds and roofscape of  
Dublin



#### AMENITIES

- All news cable network
- CD player
- Clock radio
- Complimentary newspaper with breakfast
- Down duvets
- Down pillows
- DVD player
- Fax machine on request
- Hair dryer
- Hypo-allergenic pillows on request
- In-room safe
- Lighted make-up/shaving mirror
- Multi-line telephone(s) with voicemail
- Refrigerated private bar
- Thick terry bathrobes
- Twice-daily housekeeping service
- Wired or wireless Internet access

#### GUEST SERVICES

- 24-hour In-Room Dining
- 24-hour laundry/dry-cleaning/pressing
- 24-hour multilingual Concierge
- Airport transfers
- Complimentary overnight shoeshine
- Gift shop
- Non-smoking rooms
- One-hour pressing
- Private dining room
- Restaurant
- Salon services
- Services and amenities for younger guests
- Umbrellas
- Valet parking

#### VIP GIFTS AND WELCOME AMENITY

Special arrangements can be made for clients to purchase welcome amenities and gifts for their VIP guests. These can include fruit bowls and baskets, chocolate, cheese and other edibles, as well as more traditional Irish items such as crystal and woollens.

---

---

## DINING HOURS OF OPERATION

---

### Seasons Restaurant

#### Sunday brunch

Sunday 1:00 pm - 3:00 pm

#### Breakfast

Every day 7:00 am - 11:00 am

#### Lunch

Monday to Friday 12:30 pm - 2:30 pm

Saturday 1:00 pm - 3:00 pm

#### Dinner

Every day 6:30 pm - 9:30 pm

---

### The Café

Every day 5:00 pm - 11:00 pm

---

### Lobby Lounge

#### Light fare

Sunday 9:00 am - 11:00 pm

Monday to Thursday 9:00 am - 11:30 pm

Friday and Saturday 9:00 am - 12:30 am

#### Afternoon tea

Every day 3:00 pm - 5:00 pm

---

### The Bar

Sunday noon - 11:00 pm

Monday to Thursday 10:30 am - 11:30 pm

Friday and Saturday 10:30 am - 12:30 am

---

### ICE

Wednesday and Thursday 5:00 pm - 11:30 pm

Friday and Saturday 5:00 pm - 1:30 am

Sunday 1:00 pm - 9:30 pm

---

### In-Room Dining

Breakfast 6:00 am - 11:00 am

All-day dining 11:00 am - 11:00 pm

Late night dining 11:00 pm - 6:00 am

---

---

## DINING

In a city abounding in culinary possibilities, Four Seasons provides an outstanding array of gourmet choices. With menus in the style of a classic steak and seafood grill, Seasons Restaurant has earned a devoted following, and includes an intimate private dining room that is perfect for hosting small corporate gatherings. Stylish ICE is one of Dublin's most popular places to meet and enjoy its delicious tapas and an extensive selection of wines by the glass.

### RESTAURANTS

#### Seasons Restaurant

In the spirit of a classic New York steakhouse, Seasons Restaurant serves lunch and dinner menus that highlight the area's finest meats and freshest seafood, seared to sizzling perfection on our grill. With classic cuts of Irish and American dry-aged beef available in six different sizes, the restaurant's dinner menu is truly a steak lover's dream come true.

- Cuisine: Specialising in steak and seafood
- Indoor seating: 75

#### The Café

The Café offers a more casual alternative to Seasons Restaurant. Its lighter, all-day menu features homestyle daily specials and a selection of traditional Irish dishes. It is a comfortable and cosy chance to sample an updated take on Irish standards or have a simple, satisfying bite to eat.

- Cuisine: Homestyle/traditional
- Indoor seating: 40

### LOUNGES

#### Lobby Lounge

Overlooking the garden courtyard, the Lobby Lounge is the perfect meeting place for morning coffee and pastries, afternoon tea or light refreshments and cocktails.

- Indoor seating: 70

#### The Bar

Adjacent to the Lobby and overlooking the outdoor courtyard, The Bar is a wonderful, welcoming meeting spot, serving an exceptional collection of wines, champagne, Irish and international beers and premium brands. Guests can also enjoy evening cocktails and a wide selection of Irish whiskeys.

#### ICE

With stylish, modern design and construction, ICE features dynamic Irish artwork by well-known contemporary artists. Along with a sophisticated selection of tantalising tapas, a variety of classic and innovative beverages – including cocktails and an extensive list of wines by the glass – makes ICE an ideal venue for an enjoyable evening with family and friends.

- Cuisine: Spanish-style tapas

## RECREATION FACILITIES

All the services of a city resort are available at Four Seasons. The spa offers a variety of ways to relax and re-energise in a tranquil setting. For a refreshing swim, there's an indoor lap pool – with windows allowing natural light – and an adjacent whirlpool. High-tech cardiovascular equipment and an extensive selection of weight-training machines enhance a workout in the fitness centre. And within easy reach of Four Seasons, a superb mix of parkland and links-style golf courses offer a unique golfing experience.

### SPA SERVICES

The only hotel in Dublin with a full-service spa, Four Seasons offers luxurious massage, skin care and body care options. The Spa's five treatment rooms include a suite on the fourth floor featuring a relaxation area and twin treatment beds, and the option of a screen – ideal for couples, loved ones and friends.

To extend your Spa experience – pre- or post-appointment – indulge in the separate men's and women's saunas and steam rooms. Work out in the adjoining Fitness Centre, swim leisurely laps in the sunlit indoor lap pool, or soak in the heated whirlpool. Four Seasons offers all-encompassing Spa relaxation.

- Size: 1,022 m<sup>2</sup> / 11,000 sq ft
- Number of treatment rooms: 5

### FITNESS FACILITIES

The state-of-the-art Fitness Centre offers a wide range of cardiovascular equipment furnished with individual audiovisual monitors and headsets, as well as an extensive variety of weight-training machines and free weights. The services of personal trainers are available.

- Size: 325 m<sup>2</sup> / 3,500 sq ft

### POOL

A 14-metre (46-foot) indoor lap pool and a whirlpool are located beside the Spa, naturally lit by windows looking onto an outdoor sunken garden. Children under the age of 12 years must be accompanied by an adult.

### GOLF - PARKLAND COURSES

#### *Powerscourt*

This free draining parkland course is situated within the magnificent 405-hectare (1,000-acre) Powerscourt Estate. The abundance of mature trees, natural features and stunning views of the sea and Sugar Loaf Mountain make Powerscourt an exceptional experience for all golfers.

#### *Druids Glen*

This 162-hectare (400-acre) course of gently rolling, wooded countryside was the host of the Murphy's Irish Open in 1996, 1997, 1998 and 1999. The graceful maturity of the original estate and its wildlife add to the course's mystique. An exceptional golfing experience, Druids Glen is totally unique with its distinguished surroundings and spectacular views.

#### *Golf at K-Club*

Located west of Dublin, the golf course is set on a sumptuously restored Georgian estate

set in 120 hectares (300 acres) of gardens, walks and lush Irish countryside. The K-Club is home to the Smurfit Open and venue for the Ryder Cup in 2006. The course will provide a challenge to any golfer, with strategically placed lakes to capture many balls. The course is well established, with wonderful vegetation and views of the hotel, parkland and clubhouse.

#### *Glen of the Downs Golf Club*

Located south of the Hotel in the Garden of Ireland, at the foot of Sugar Loaf Mountain, this course boasts spectacular views of the Wicklow Mountains and the Irish Sea from every point. Course architect Peter McEvoy claimed, "The views make this site a designer's dream." The course has been designed and built to USGA standard, with sand-based greens and tees. Golfers will find Glen of the Downs a challenge, with its natural slopes and valleys combined with its fairways, bunkers and lakes. The course measures 6443 yards and sports some 90 bunkers. Among the features of the course is a five-tier double green which is shared by the seventh and ninth holes.

#### *St. Margaret's*

Located north of the Hotel, close to the airport, this championship course has already hosted three international tournaments. Seven of the par 4 holes are over 400 yards long, and the eighth hole is 525 yards - a challenge for the biggest of hitters. Ryder Cup star Sam Torrance has praised the 18th hole as "the best finishing hole I have ever seen ... and possibly the strongest and most exciting in the world."

### GOLF - LINKS COURSES

#### *The European*

Located south of the Hotel near the sandy beaches of Brittas Bay, The European is a private, family-run golf club with a friendly disposition toward visiting players. The course has received many accolades and is now considered one of the top 100 golf courses in the world. The course plays very long as it brings you through high dunes and marshlands, along a wild and exposed beach, up onto the cliffs of Mizzen Head and deep into the Hades Vale at the 17th hole.

One of the most unique features of this golf course is that it has 20 holes ... if you have 20 fine golf holes to play, why stop at 18? Similarly, the green at the 12th hole is 127 yards deep, which may make it the longest green in the world.

#### *Royal Dublin Golf Club*

Located 50 minutes north of Dublin on Bull Island, which it shares with a bird sanctuary. Royal Dublin is Ireland's second-oldest golf course and was pioneered by the Scot John Lumsden in 1885, later receiving its Royal designation in 1891. The course has hosted many challenges including the Irish Open, Irish Close and the Toyota Challenge of Champions between Jack Nicklaus and Seve Ballesteros. The course has many hazards, the most dangerous being exceptionally narrow fairways and the winds that rise off the Irish Sea with no warning.

#### *St. Anne's Golf Club*

Founded in 1921, St. Anne's is located in the heart of one of the finest bird sanctuaries in Ireland, the North Bull Island. This unique setting for the famous old links, with splendid views of Howth Head and across Dublin Bay to the Dublin Mountains, ensures enjoyable

year-round golf for the discerning golfer.

*Old Portmarnock*

Universally acknowledged as one of the most prestigious golf links courses, Portmarnock is situated on a tongue of shallow dune land north of Dublin. It has hosted some of the game's greatest events, from the British Amateur of 1949, to the Canada Cup of 1990 and the 1991 Walker Cup. Although this is a private links course, arrangements can be made for a tee time with sufficient advance notice.

## INCENTIVE ACTIVITIES

### Sample itinerary

---

#### Day 1

##### Arrival at the Hotel

Guests are welcomed to Four Seasons Hotel Dublin, their home away from home.

Ireland is renowned for its lively social life and friendly people, so what better way to spend your first night in Dublin than by enjoying a welcome evening at the Hotel. Alternatively, enjoy a light meal and quiet stroll in the neighbourhood, which is famous for its architecture.

---

#### Day 2

##### Day

After breakfast at the Hotel, enjoy one of the following excursions, which we would be delighted to arrange on your behalf:

- Take the horse-and-carriage Georgian Tour of Dublin.
- Visit Trinity College and see the famous *Book of Kells*, followed by an art viewing at The National Gallery.
- Taste some Irish whiskeys at the Jameson Distillery.

For more active guests, may we recommend:

- 18 holes at The K Club, host of the 2006 Ryder Cup.
- Fishing on the River Rye, within the grounds of a historic Irish estate.
- Horseback riding in the scenic Wicklow Mountains.

##### Evening

In the evening, enjoy a tour of – and dinner in – the Guinness Storehouse, home of the “black stuff.” After dinner, one of Dublin’s best dance bands takes to the stage to help you dance the night away in true Irish style.

---

#### Day 3

##### Day

You have not experienced Ireland until you have seen its breathtaking scenery. An ideal way to do this is by taking one of these day trips:

- County Wicklow, otherwise known as the garden of Ireland, is just south of Dublin. It is home to Powerscourt House and Gardens. On site you will also find one of Ireland’s premier shopping emporiums, Avoca Handweavers, where you will be sure to find gifts for all those back home. Afterwards, visit Glendalough, a valley of two lakes and home to an ancient monastery.
- Alternatively, visit County Kilkenny. In the city of Kilkenny, the medieval capital of Ireland, you will find St. Canice’s Cathedral, dating back to the 13th century, as well as Kilkenny Castle, which has been restored to its original style and grandeur.

##### Evening

In the evening, experience a truly Irish *hooley* night in an authentic Irish pub. The evening begins with a seafood dinner, and traditional Irish entertainment follows – music, and Irish dance akin to *Riverdance*.

---

Day 4	<p>Day</p> <p>Once you have enjoyed breakfast at the Hotel, experience some of these nearby activities:</p> <ul style="list-style-type: none"><li>• Off-road driving, clay pigeon shooting and archery in County Wicklow</li><li>• Speed boating at Dublin Bay</li><li>• A vintage car treasure hunt in Dublin</li><li>• A historical cycling tour of Phoenix Park, Dublin</li><li>• An art appreciation viewing at the National Gallery of Ireland, Dublin</li><li>• Self pampering in the Hotel's spa</li></ul> <p>Evening</p> <p>Enjoy a gala dinner in one of the city's numerous historical buildings, each with its own character and stories to tell:</p> <ul style="list-style-type: none"><li>• Dublin Castle</li><li>• Number 10</li><li>• The Kings Inn</li><li>• The Royal Hospital Kilmainham</li><li>• Trinity College</li></ul>
Day 5	<p>Departure</p> <p>Before bidding a final farewell to Dublin, the morning is free for you to pass the time at leisure and cherish your final moments in this special city.</p>

---

www.fourseasons.com/dublin

Rooms	Dimensions		Size		Height		Classroom	Hollow square	U-shape	Theatre	Reception	Banquet rounds	Conference/boardroom
	(m)	(ft)	(m <sup>2</sup> )	(sq ft)	(m)	(ft)							
- The Ballroom	18.2 x 30.5	60 x 100	555	5,974	5.2	17	350	100	80	550	600	450	-
- Ballroom Pre-Function	6.3 x 30	21 x 98	189	2,034	4	13	-	-	-	-	200	-	-
- Junior Ballroom	13.1 x 17.7	43 X 58	232	2,497	4	13	140	60	60	210	230	180	50
- Junior Ballroom Pre-Function	6.3 x 17.5	21 x 47	110	1,184	4	13	-	-	-	-	80	-	-
- Hibernia I	7.5 x 9.7	24.6 x 32	73	786	3.1	10	40	30	24	50	50	50	25
- Hibernia II	8.3 x 9.7	27 x 32	86	926	3.1	10	40	30	24	50	50	50	25
- Hibernia III	6.2 x 7.7	20 x 25	48	517	3.1	10	21	-	-	32	30	20	14
- Boardroom	6 x 7.2	20 X 24	43	463	3.1	10	-	-	-	-	-	-	16