

## Quick Reference Guide

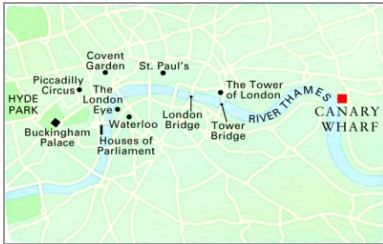
---

Last updated May 3, 2012 | For additional information please contact the hotel directly

---

Four Seasons London at Canary Wharf  
46 Westferry Circus, Canary Wharf, London, E14 8RS, England  
Tel 44.20.7510.1999 | Fax 44.20.7510.1998

[www.fourseasons.com/canarywharf](http://www.fourseasons.com/canarywharf)



46 Westferry Circus  
Canary Wharf, London E14 8RS,  
England  
Tel 44.20.7510.1999  
Fax 44.20.7510.1998

#### AIRPORTS

- London Heathrow Airport (LHR): 70 minutes (36 kilometres/22 miles)
- London Gatwick Airport (LGW): 90 minutes (81 kilometres/50 miles)
- London City Airport (LCY): 15 minutes (8 kilometres/5 miles)

#### TABLE OF CONTENTS

- 2 *Introduction*
- 4 *Destination*
- 12 *Conference Facilities*
- 18 *Guest rooms, Suites and Private Residences*
- 23 *Dining*
- 24 *Recreational Facilities*
- 25 *Incentive Activities*
- 27 *Appendix: Conference Chart*

Home to London's newest financial centre, the historic docklands of Canary Wharf have been remarkably transformed. Accommodating the demands of 21st-century commerce, sleek towers house ultramodern headquarters of international companies. And at river's edge, Four Seasons Hotel London at Canary Wharf is perfectly located for business and leisure.



Enjoying sweeping views of the River Thames and the city, the elegant 10-storey Four Seasons Hotel London at Canary Wharf offers a stunning setting for corporate gatherings, social events and private dinners. Quietly exclusive, the 142 guest rooms and suites are among the largest of their kind in the city. Four Seasons offers stylish dining in an intimate setting, gracious function venues for up to 230 guests and private access to one of the finest spas in London. Within this vibrant new quarter of London, Four Seasons is an intimate retreat – conveniently located to access the best of London's future, present and past.

#### TRANSPORTATION

The London City Airport is just a 15-minute drive from Canary Wharf. A busy commuter airport, it connects to the UK and to destinations throughout Europe. All major European airlines operate here, including City Jet to Ireland.

Heathrow Airport is a 70-minute drive from the Hotel, depending on traffic, and Gatwick is 90 minutes away. All major airlines serve these airports.

Rental cars are available at all airports as well as at the Hotel through the Concierge. Limousine service and parking are also available.

Canary Wharf is connected to central London via the Jubilee Line on the London Underground. The journey takes 20 minutes. A river ferry provides frequent service from a jetty in front of the Hotel to Embankment Pier, conveniently located in the West End.

---

---

WEATHER CHART

---

Month	°C		°F	
	Highs/Lows	Highs/Lows	Highs/Lows	Highs/Lows
January	9	/ 4	48	/ 39
February	11	/ 4	52	/ 39
March	12	/ 6	54	/ 43
April	12	/ 6	54	/ 43
May	17	/ 7	63	/ 45
June	19	/ 13	66	/ 55
July	23	/ 14	73	/ 57
August	23	/ 14	73	/ 57
September	18	/ 12	64	/ 54
October	15	/ 7	59	/ 45
November	12	/ 6	54	/ 43
December	9	/ 4	48	/ 39

---

DESTINATION

Built on the historic site of the West India Quay – the busy centre for Britain’s spice trade hundreds of years ago – the Hotel’s riverfront location is an easy walk to the global giants of media and finance that are based in Canary Wharf. As London’s booming new financial district, the area buzzes with a young corporate crowd.

London is home to close to 8 million people, with inhabitants and visitors from all over the world, giving the city its unique and distinct international flair. Only 15 minutes from Four Seasons via the London Underground’s Jubilee Line, Central London is the thriving business and leisure centre of Europe, and home of many of the world’s finest art galleries, museums, historical buildings, shops and restaurants. Just 10 minutes from Canary Wharf, London City Airport connects to destinations throughout the UK and Europe.

In 2012, London welcomes the Olympic Games. The Hotel is ideally situated 10 minutes from Olympic Park, where the main event venues will be located, including the Olympic Stadium and the Aquatics Centre.

WEATHER

Set along the River Thames, London offers a consistent climate. Temperatures are mild in spring with sunny, dry days in May and June. Autumn brings pleasant temperatures for taking in the dramatic autumn colours. While winter is cooler, temperatures tend to remain above freezing.

LOCAL ATTRACTIONS AND ACTIVITIES

Four Seasons offers a unique vantage point from which to explore the sights, sounds and experiences that surround you. Begin with a tour along the River Thames, just outside the Hotel, then view the royal collection at the Queen's Gallery at Buckingham Palace. Enjoy a movie, dancing or a live show at The O2 – a world of entertainment. The highlights of local attractions that follow provide a taste of the region's sightseeing opportunities. To enhance your stay, the Concierge is always on hand to offer additional assistance and insight.

*Within a 10-minute drive of the Hotel*

Docklands Sailing and Watersports Centre:

- Docklands Sailing and Watersports Centre by Millwall Dock is ideally located, offering easy access to a sailing day out.

*Within a 15-minute drive of the Hotel*

The O2:

- The O2 is a world-class entertainment destination. Its centrepiece is a 23,000-seat arena, which has played host to leading acts such as the Rolling Stones, Prince, Justin Timberlake, Beyoncé, Britney Spears and Madonna. The surrounding neighbourhood is home to a variety of restaurants and bars, The Indigo O2 (an intimate live music club), an 11-screen cinema and The O2 Bubble, a venue that's currently hosting the British Music Experience.

Tower of London:

- The Tower of London is an imposing fortress by the Thames. Now one of London's

main tourist attractions, the Tower has been both a royal residence and a state prison. William the Conqueror began building its oldest part, the White Tower, in 1078; the walls and the rest of the building were added later. The White Tower houses the Chapel of St. John, the oldest church in London (built in 1080), while the Jewel House holds the famous Crown Jewels.

**Tower Bridge:**

- Opened in 1894, Tower Bridge is a world-famous landmark, easily recognized by its twin Gothic towers. These towers are linked near their top by two fully glazed walkways. Inside the bridge, interactive computers and working models explain its innerworkings.

**Design Museum:**

- The Design Museum is a study collection showing the development of design in mass production. The motivating idea behind the museum is to look at everyday things and explain why and how mass-produced consumer objects work and look as they do. A Review Gallery examines new products and a changing programme of exhibitions is supplemented by events, lectures and seminars.

**St. Paul's Cathedral:**

- St. Paul's Cathedral, Sir Christopher Wren's masterpiece, was built on the site of an old Gothic cathedral that burned down in the Great Fire of 1666. Constructed between 1675 and 1710, St. Paul's beautiful Renaissance cathedral is dominated by a splendid dome, second in size only to St. Peter's in Rome.

**Petticoat Lane:**

- Petticoat Lane is a famous street market selling clothes, hardware, jewellery and other goods.

**London Dungeon:**

- The London Dungeon is quite literally a museum of horror: visitors have close encounters of a spine-chilling kind as the gory side of history is spilled. A series of life-size tableaux depict superstition, torture and death in factually accurate, if often graphic details. Highlights include eavesdropping on Anne Boleyn's final prayers before witnessing her execution, and judgement day where visitors are meted out 18th-century justice, sentenced to death and taken by barge to Traitor's Gate to meet their fate.

**Whitechapel Art Gallery:**

- Whitechapel Art Gallery, opened in 1901, is known for its innovative exhibitions, independent point of view and distinctive role in the art world. The gallery is one of the leading cultural centres in London and enjoys an international profile.

**The Hayward Gallery:**

- The Hayward Gallery mounts exhibitions of contemporary and historical art. Since 1968, it has been the originator or host of many of the world's most influential exhibitions. The gallery is also responsible for National Touring Exhibitions and for the Arts Council Collection, which it manages on behalf of the Arts Council of England.

Tate Modern:

- International modern art in the transformed Bankside Power Station. The Tate Modern offers a spectacular experience, both in the venue and in the collection. It also features a shop and a café overlooking the river.

HMS Belfast:

- Europe's only surviving big gun armoured warship from World War II. Explore all nine decks from the Captain's Bridge to the massive Boiler and Engine Rooms.

Borough Market:

- This fruit and vegetable market spreads out in an L shape beneath the railway tracks running into London Bridge tube station. It is the successor to a medieval market held on London Bridge. In 1276 the market was moved to Borough High Street to avoid congestion and was moved again in 1756 for the same reason. The buildings of its present location date from 1851. Recently the area has been given a new lease of life by the weekly Saturday food market held here. Stalls include de Gustibus and the Fresh Olive Company. Borough Market is located between Borough High Street, Bedale Street, Winchester Walk and Stoney Street, in London SE1. Nearby are the Neal's Yard Dairy, selling British and Irish farmhouse cheeses, the acclaimed fish! restaurant, and Konditor & Cook, the bakers. Travel time to the market is either a 15-minute boat ride or a 15-minute tube ride.

*Within a 20-minute drive of the Hotel*

The London Eye:

- The London Eye is 135 metres (443 feet) high and the world's largest operation wheel. It gives passengers a slow-moving 'flight' with panoramic views of many of London's landmarks. The Eye has 32 enclosed capsules, each of which can carry up to 25 people. It offers bird's-eye views over 40 kilometres (25 miles) during a 30-minute flight on its slowly revolving wheel. Flights take place every half hour. A turn-up-and-queue service operates, but booking in advance is also available.

The Cutty Sark:

- The Cutty Sark is the last surviving tea clipper ship. In 1885, it broke all speed records. Now restored to its former glory at Greenwich Pier on the banks of the River Thames, the Cutty Sark offers visitors a glimpse of life at sea in the golden days of sail. You can explore every part of the ship, including the Lower Hold, with its collection of figureheads, and the Tween Deck, which tells the story of the Cutty Sark. The Tween Deck also features a display of ship pictures and models. Cabins have been reconstructed to show what life was like at sea in the 1870s.

Imperial War Museum:

- From Flanders to the Gulf War, the Imperial War Museum tells the story of the 20th-century wars, complete with smell and sound effects. The thousands of exhibits range from ration books to rockets and include interactive videos and childrens' activities. 'Conflicts since 1945' offers a display on the Cold War, national service terrorism and peacekeeping. Some special events include Spitfire Summer: an exhibition marking the 60th anniversary of Britain's 'finest hour.'

Barbican Centre:

- Barbican Centre is Europe's largest arts centre under one roof. The base for the London Symphony Orchestra and the London home of the Royal Shakespeare Company, it houses a concert hall, three cinemas, two theatres, two art galleries, two trade exhibition halls, five conference rooms, foyers, shops and a conservatory. Admission is complimentary.

National Maritime Museum:

- The National Maritime Museum makes the sea come alive. The lure of the sea brings visitors to view multimedia displays, exhibits of relics and the Time and Space Exhibition.

Vinopolis – City of Wine:

- Vinopolis is the world's first visitor attraction devoted entirely to wine and its associated pleasures. It offers a multimedia tour of the world of wine, combined with a visit to the tasting halls. Neither an exhibition nor a museum, this experience brings together all the pleasures of wine -; travel, food, culture and art -; in a 9,290-square-metre (100,000-square-foot) complex.

Somerset House:

- This magnificent 18th-century building, situated on the banks of the Thames by Waterloo Bridge, was designed by Sir William Chambers to house public offices, including the Navy Board and three learned societies. It now houses the celebrated collections of the Courtauld Institute of Art, the Gilbert Collection and Hermitage Rooms. The Gilbert Collection, bequeathed to the nation by Sir Arthur Gilbert, is a unique collection of gold and silver decorative arts. It is one of the most eclectic and dazzling collections of its kind assembled outside Russia. Visitors will discover European gold and silver snuff boxes, Italian mosaics and portrait miniatures, all set within a 2,300-square-metre (25,000-square-foot) vaulted architectural masterpiece. Somerset House also hosts open-air performances and concerts, and boasts gift shops, cafés, a restaurant, the spectacular Edmond J. Safra Fountain Court – and an ice rink in the winter.

Shakespeare's Globe:

- Reconstruction of Shakespeare's original theatre with Elizabethan-style timber and thatched roof.

*Within a 25-minute drive of the Hotel*

The Royal Observatory Greenwich:

- The Royal Observatory Greenwich is a museum of time and space. Built by Sir Christopher Wren in 1675, it is the home of the Greenwich Meridian, the base point for world time and the site of Longitude 0. A timeball drops daily at 1:00 pm. Featuring the largest refracting telescope in Britain, the Observatory offers visitors computer simulations, as well as views of the Astronomer Royal apartments and Wren's Octagon Room.

The British Museum:

- The British Museum, founded in 1753, is one of the great museums of the world. It displays the works of mankind from prehistoric times to the present day, including the Rosetta Stone, the Soleb Lion from Egypt and sculptures from the Parthenon. The

British Library exhibition galleries are also housed here.

Westminster Abbey:

- Westminster Abbey is an elegant display of outstanding architecture and historical significance. It has hosted every coronation from William the Conqueror in 1066 to Elizabeth II in 1953 (excepting Edward V and Edward VIII). Many kings and queens are buried here, as well as thousands of eminent men and women. Visitors can see the Grave of the Unknown Warrior; the Royal Tombs and Shrine of St. Edward the Confessor; the Coronation Chair; Lady Chapel and Poets' Corner. Also noteworthy are the Royal Chapels, the brass rubbing centre and the Undercroft Museum.

Apsley House:

- Apsley House, The Wellington Museum, was built by Robert Adams between 1771-1778 and bought by the first Duke of Wellington. The palatial interiors house the Duke's magnificent collection including: paintings (many originally from the Spanish Royal Collection) by Velazquez, Goya, Rubens, Wilkie, Lawrence and Dutch Masters; porcelain; sculpture; silver and furniture. Apsley House remains the last great London townhouse with its collections largely intact.

Dali Universe:

- The Dali Universe is an innovative, permanent, 2,800-square-metre (30,000-square-foot) exhibition located at County Hall, part of London's cultural hub along the South Bank. Dedicated to the works of Salvador Dali (1904–1989), the great Spanish surrealist artist, the Dali Universe features over 500 works of art, most of which had not been seen in the UK before the exhibition's opening in 2000. The collection provides a fascinating insight into many important aspects of Dali's creative genius.

Royal National Theatre and Royal Albert Hall:

- The Royal National Theatre is one of the greatest theatres in the world. At its three venues, you can see productions ranging from intimate character studies in the Cottesloe to grand spectacle in the Olivier. The National Theatre is the spiritual centre of London's theatreland, and the very heart of the British theatrical tradition.

*Within a 30-minute drive of the Hotel*

Natural History Museum:

- The Natural History Museum houses a vast selection of plant and animal exhibits, plus 'Investigate': a new educational resource with state-of-the-art work stations and hundreds of touchable specimens.

Tate Britain Gallery:

- Tate Britain is the national gallery of British art from 1500 to the present day, the Tudors to the Turner Prize. Tate holds the greatest collection of British art in the world, including works by Blake, Constable, Epstein, Gainsborough, Gilbert and George, Hatoum, Hirst, Hockney, Hodgkin, Hogarth, Moore, Rossetti, Sickert, Spencer, Stubbs and Turner. The gallery is the world centre for the understanding and enjoyment of British art, and helps to promote international interest in British art.

National Gallery:

- One of the world's finest galleries, the National Gallery was founded in 1824 and

houses one of the greatest collections of European painting in the world. The works range from 1260 to 1900, and are painted by artists including Botticelli, Michelangelo, Poussin and Monet. Admission free.

Houses of Parliament:

- A majestic building in the late Gothic style, the Houses of Parliament stand on the site of the old royal palace of Westminster - which was founded in the 11th century and burned down in 1834. The interior is not open to the public, but it is possible to attend the debates by queuing at St. Stephen's Entrance. At the north end of the building stands the majestic Clock Tower, which houses Big Ben.

Buckingham Palace:

- Buckingham Palace has been the principal residence of the sovereign since the accession to the throne of Queen Victoria in 1837. When the Queen is in residence, the Royal Standard is flown from the flagpole. The State Rooms, including the Throne Room, Picture Gallery and State Dining Room, are open to the public for a few weeks in August and September. Used in ceremonial and official functions, these rooms are sumptuously decorated with some of the finest tapestries and works of art from the Royal Collection.

Covent Garden:

- Covent Garden, in the heart of London, was formerly a fruit and vegetable market. Now it's a lively and cosmopolitan shopping district with markets, boutiques, specialty shops, street entertainment, cafes, bars and restaurants and a centre for crafts and artisans. By night, it is the destination of theatre-goers and patrons of the Royal Opera House.

Knightsbridge:

- Dominated by Harrods and Harvey Nichols, this fashion shopping area includes the top designer boutiques of Sloane Street, as well as Beauchamp Place and Old Brompton Road. Located at Underground stop: Knightsbridge.

Oxford Street:

- One of the busiest streets in the world, Oxford Street is the first to cash in on shop-til-you-drop tourists. The mixture of chain stores and cut-price shops run for 3 kilometres (2 miles), from Tottenham Court Road to Marble Arch. Most of the shops are High Street outlets, but a few have retained their individuality. Selfridges is the largest and best stocked department store on the street, which also boasts John Lewis, Debenhams, DH Evans and Primark. Other stores include House of Fraser, British Home Stores and Marks and Spencer.

Bond Street:

- Home to designer shops and boutiques, precious jewellers and auction houses Sotheby's and Phillips, is Old and New Bond Street. (Named New Bond Street from Oxford Street to Clifford Street then Old Bond Street south of Clifford to Piccadilly.) Located at Underground stop: Bond Street.

Camden Market:

- Camden Market is one of the busiest street markets in London, known for its antiques, clothes, foods, bric-a-brac and crafts. There are craft workshops and other shops open

throughout the week.

Marble Arch:

- Located at the top of Oxford Street, Marble Arch is a famous landmark in London. Built in 1828 as the chief entrance to Buckingham Palace, it was moved in 1851 to its current site as an entrance to Hyde Park – close to Speakers' Corner.

Madame Tussaud's:

- London's top visitor attraction, Madame Tussaud's waxworks museum has effigies of everyone from the Queen to Madonna. Latest waxwork figures include William Hague MP, Kylie Minogue and Arnold Schwarzenegger. Admission fee applicable.

Regent Street:

- Linking Pall Mall with Portland Place and Regent's Park, Regent Street was originally designed by Regency architect John Nash. Stores include Liberty and top British fashion retailers Austin Reed, Burberry and Aquascutum. Located at Underground stop Oxford Circus/Piccadilly Circus.

Science Museum:

- The Science Museum's outstanding collections, working exhibits and interactive galleries bring to life the story and development of science. The museum also incorporates the Earth Galleries, which focuses on the planets.

The Queen's Gallery at Buckingham Palace:

- Once the Palace chapel, the gallery was opened in 1962 and holds regularly changing exhibitions. It allows the general public to glimpse works of art from the royal collection, one of the finest art collections in the world.

Royal Academy of Arts:

- The Royal Academy has some of Europe's most magnificent galleries. There's always something new to enjoy – the programme of exhibitions is constantly changing. Shows include recent fashion and photography retrospectives and collections of pre-20th-century art. The Academy is also the venue of choice for collections celebrating the life and works of recently deceased artists.

Changing of the Guard:

- This dazzling display is performed by the Foot Guards of the Household Division, the Queen's personal guards. A reduced ceremony is performed when the Queen is away.

*Within a 35-minute drive of the Hotel*

Kensington High Street:

- Kensington High Street bustles with business for major department stores including Marks & Spencer, as well as popular chains and many specialist boutiques. Kensington Church Street is renowned for its antique shops, leading up to Notting Hill Gate and Portobello Road market. Located at Underground stop: High St. Kensington.

The London Zoo:

- One of the world's most famous zoos, London Zoo in Regent's Park is home to over 12,000 animals. Meet-the-animals shows are held daily, giving visitors the opportunity

to learn more about the animals from their keepers. Rare and beautiful creatures can be seen at the aquarium, elephant house, penguin pool, Snowdon aviary, Bear Mountain and the Web of Life exhibition. The Children's Zoo, designed to educate children aged four to eight years of age, includes rabbits, hamsters and llamas.

*Within a 40-minute drive of the Hotel*

Portobello Road:

- Portobello is really several markets in one, and Saturday is the day when all are in full swing. On Saturday's market day, you can experience a mile of hustle, haggle, colour and energy, the main feature of which is hundreds of antique and specialist shops and stalls. You can find clothes, household items, records and more. Also to be spotted are some talented (and sometimes bizarre) street performers. During the week, Portobello is the domain of the fruit and vegetable market traders, who shout from their many colourful and bustling stalls. Sundays are rather quiet, but there is a small area (under the motorway) where mainly bric-a-brac and second-hand clothes are sold.

Earls Court:

- Earls Court is one of London's most famous venues, hosting over 100 shows each year. Its central location in London makes it a perfect destination for a night on the town; last year it saw almost two million visitors. Inaugurated in 1886, Earls Court has hosted many of the UK's biggest and best concerts and shows.

*Within a 45-minute drive of the Hotel*

All England Lawn Tennis Club:

- Home to the Wimbledon Tennis Tournament, held in South London, that draws the world's leading tennis players each summer.

*Within a 50-minute drive of the Hotel*

Twickenham Stadium:

- Twickenham Stadium is the home of English rugby and stages high-profile Rugby League, Rugby Union and international matches. With a capacity of 82,000, it is a fantastic venue for both sporting and music events.

CONFERENCE FACILITIES OVERVIEW

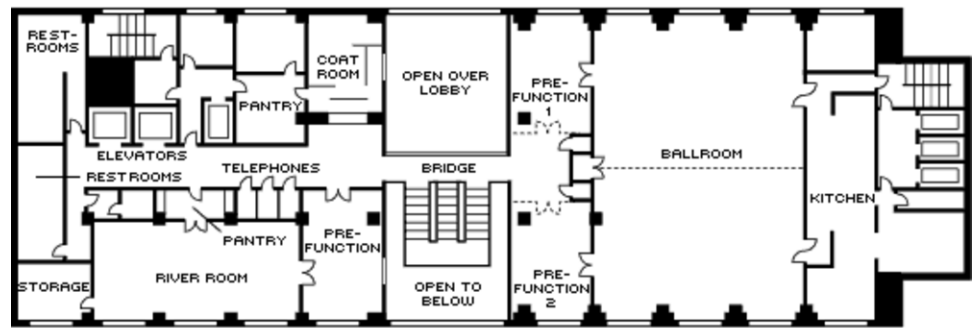
Total Space	551 m <sup>2</sup> 5,931 sq.ft.
Largest Ballroom	232 m <sup>2</sup> 2,497 sq.ft.
Meet and Feed (max. capacity)	96
Breakouts	8
Banquet (max. capacity)	200
Outdoor Banquet (max. capacity)	20
Private Dining (max. capacity)	60

CONFERENCE FACILITIES

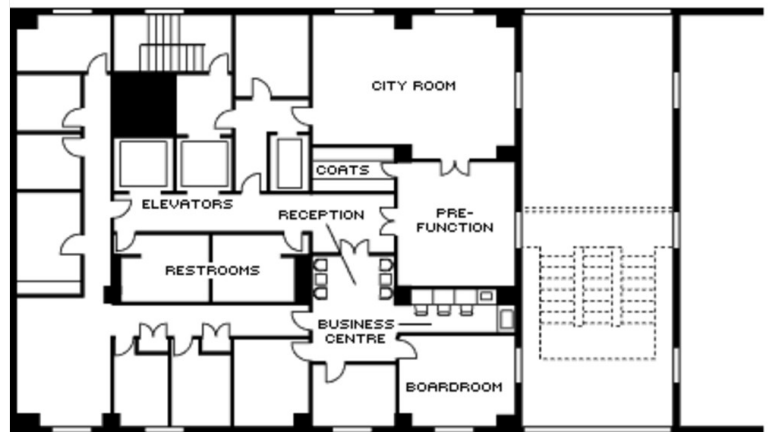
Four Seasons Hotel London at Canary Wharf is ideal for smaller corporate gatherings and events of up to 230 people within a breathtaking riverfront venue. Its 562 square metres (5,662 square feet) of meeting space include a two-storey ballroom bathed in natural daylight from floor-to-ceiling windows. With a hint of Art Deco, the elegant Ballroom can be divided in two for more intimate events.

Three other function rooms – their décor enhanced with a black American walnut wood finish – lend themselves to smaller groups. Both the River Room and the City Room enjoy an abundance of natural daylight through their large floor-to-ceiling windows. Discreet and confidential, the Boardroom provides the perfect setting for meetings of up to eight. On every occasion, Four Seasons event coordinators provide comprehensive assistance, ensuring seamless perfection.

First floor



Mezzanine level



TECHNICAL ASSISTANCE

Four Seasons Hotel London at Canary Wharf continually updates its audiovisual presentation equipment.

Special arrangements can be made to fulfil any request including:

- Lecterns
- Overhead projectors
- Data projectors
- LCD projectors
- Slide projectors
- Equipment necessary for rear projection and multi-image dissolve programming
- Video recorders
- Players and projectors
- Screens
- Flipcharts
- Easels and marker boards
- Wired or wireless Internet access

#### MUSIC AND ENTERTAINMENT

Our team of Conference Service Managers can arrange music and entertainment to complement any part of your function or event.

#### RECEIVING AND MAINTENANCE

All packages should be sent to the attention of a group's name and its Conference Service Manager. Limited space is available for the storage of large items. Please time shipping to the date of your arrival.

#### *Maintenance*

The Engineering Department is available for general assistance with lighting, room temperature control and minor repairs.

#### DESTINATION MANAGEMENT

Allied Europe  
Greville House, Hatton Road  
Bedfont, Middlesex  
TW14 9PX

#### BUSINESS SERVICES

Around the clock, Four Seasons can assist you with business, entertainment or travel arrangements through the Business Center and resourceful, multilingual Concierge.

- 24-hour business services
- Airline reservation service
- Audiovisual equipment
- Cellular telephones
- Computers
- Printing services
- Wired or wireless Internet access

#### SPOUSE PROGRAMMES

The Hotel offers many activities to interest the spouses of meeting participants, including tours of London and the surrounding area.

- Visits to London markets
- Private boat tour on the River Thames
- Antique shopping
- Day trips to elegant gardens and historic homes
- Behind-the-scenes tour of London's top theatre
- Chefs' demonstrations
- Spa treatments or fitness classes

#### CHILDRENS AND FAMILY PROGRAMMES

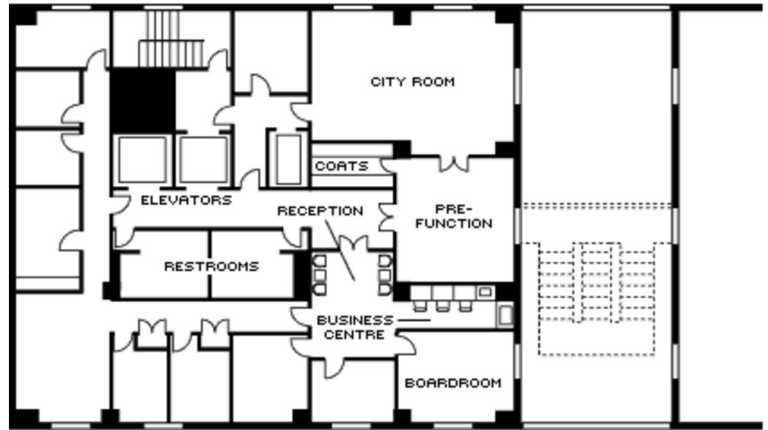
We would be pleased to help arrange appropriate activities for visiting children or families.

**CITY ROOM**

Dimensions	9.5 x 6 m 31.2 x 19.7 ft
Size	56 m <sup>2</sup> 603 sq.ft.
Height	2.8 m 9.2 ft

*Capacities*

Classroom	30
Hollow square	26
U Shape	20
Theatre	36
Reception	55
Banquet Rounds	30

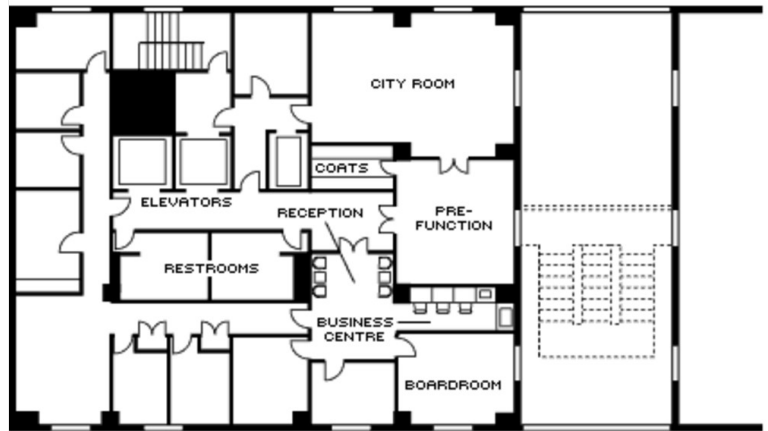


**CITY ROOM PRE-FUNCTION AREA**

Dimensions	6 x 5 m 19.7 x 16.4 ft
Size	30 m <sup>2</sup> 323 sq.ft.
Height	2.8 m 9.2 ft

*Capacities*

Reception	30
-----------	----

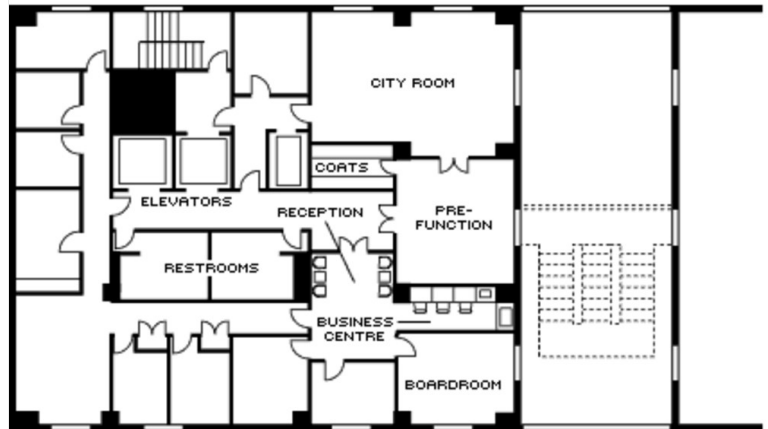


**BOARDROOM**

Dimensions	4.6 x 5.5 m 15.2 x 17.9 ft
Size	25 m <sup>2</sup> 272 sq.ft.
Height	2.8 m 9.2 ft

*Capacities*

Boardroom	8
-----------	---

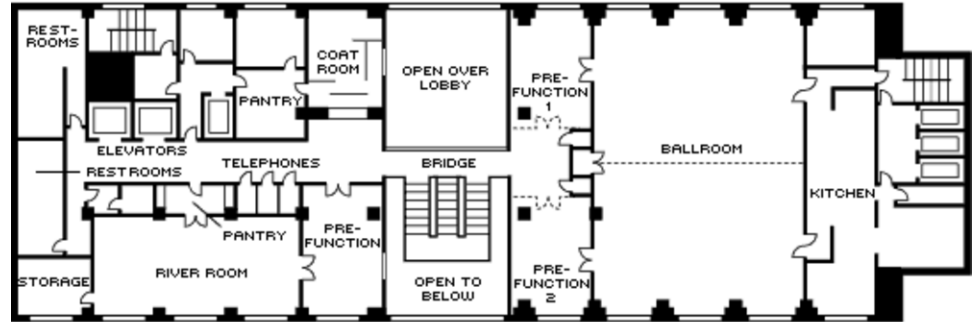


**BALLROOM**

Dimensions	18.5 x 12.5 m
	60.7 x 41 ft
Size	232 m <sup>2</sup>
	2500 sq.ft.
Height	4.7 m
	15.4 ft

*Capacities*

Classroom	120
Hollow square	60
U Shape	60
Theatre	200
Reception	200
Banquet Rounds	200

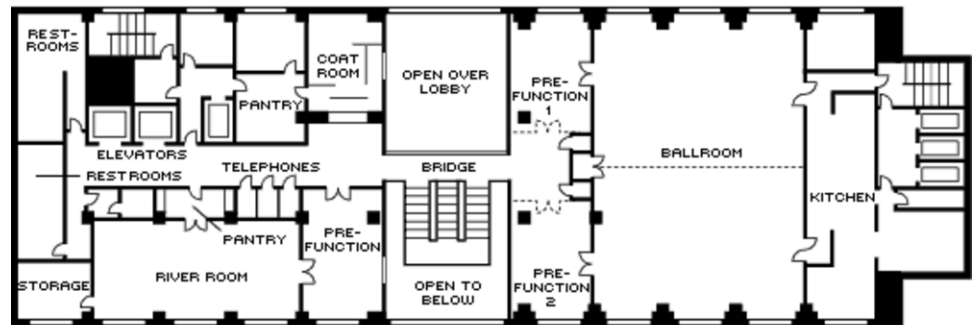


**BALLROOM PRE-FUNCTION AREA**

Dimensions	18.5 x 4.5 m
	60.7 x 14.8 ft
Size	84 m <sup>2</sup>
	904 sq.ft.
Height	4.7 m
	15.4 ft

*Capacities*

Reception	100
-----------	-----

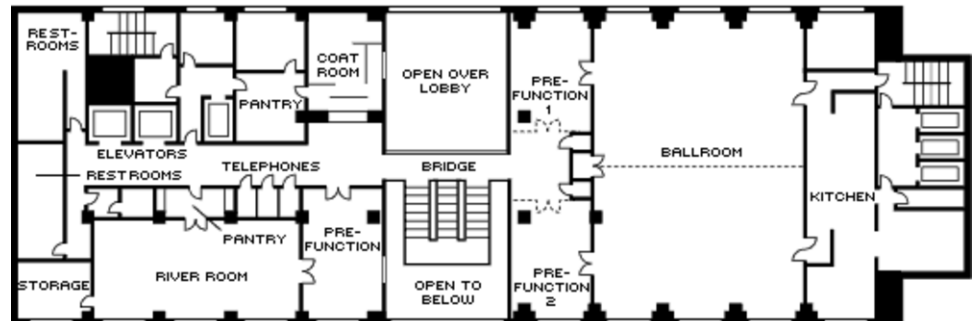


**RIVER ROOM**

Dimensions	13 x 6.5 m
	42.6 x 21.3 ft
Size	84 m <sup>2</sup>
	905 sq.ft.
Height	2.3 m
	7.5 ft

*Capacities*

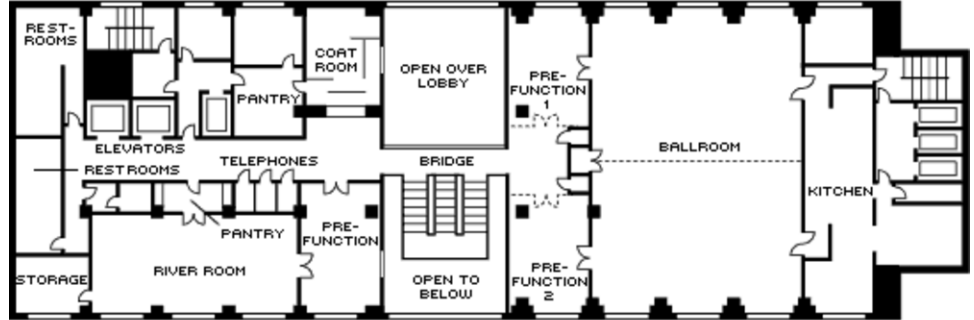
Classroom	42
Hollow square	34
U Shape	28
Theatre	75
Reception	85
Banquet Rounds	66



RIVER ROOM PRE-FUNCTION AREA

Dimensions 8 x 5 m  
26.2 x 16.4 ft  
Size 40 m<sup>2</sup>  
430 sq.ft.  
Height 2.8 m  
9.2 ft

Capacities  
Reception 40



### GUEST ROOMS, SUITES AND PRIVATE RESIDENCES OVERVIEW

Four Seasons offers 142 spacious guest rooms and suites that exude contemporary elegance. Newly renovated, most have large bay windows with plush cream leather window seats and stunning views of the River Thames and the city beyond. Modern in design, the warm grain of the American black walnut furnishings enriches the airy guest rooms. The marble bathrooms are among the largest in London, with features that include a deep soaking tub and a separate glass-enclosed shower.

Fully equipped for business needs, other standard amenities include two-line speakerphones and high-speed Internet access for personal communications and entertainment.

Room Category	#	Beds	Size (m <sup>2</sup> )	View (sq ft)	
- Premier River-View Room	8	1 King	37	400	Panoramic views of London, the River Thames and the Hotel garden
- Deluxe Room	52	1 King or 2 twin	37	400	River Thames
- Superior Canary Wharf-View Room	40	1 King or 2 twin	37	400	Canary Wharf
- Canary Wharf-View Room	28	1 King	37	400	Canary Wharf
- Presidential Suite	1	1 King	223	2,400	River Thames and City of London
- Penthouse Suite	1	1 King	149	1,600	River Thames
- One-Bedroom River-View Suite	3	1 King	74	800	Panoramic views of London, the River Thames and the Hotel garden
- One-Bedroom Suite	3	1 King	74	800	Riverfront view of the Thames
- Four Seasons Executive Suite	6	1 King	56	600	River Thames

#### Guest Room Overview

The 135 Four Seasons guest rooms are each equipped to provide the finest comfortable and practical accommodation. Standard, Superior and Deluxe Rooms are positioned on the second to eighth floors, with a mix of enhanced city and river views. Other amenities include international television channels and full-sized entertainment armoires. All seven Four Seasons Executive Suites are corner suites with lovely river views and a separate parlour for entertaining or informal meetings.

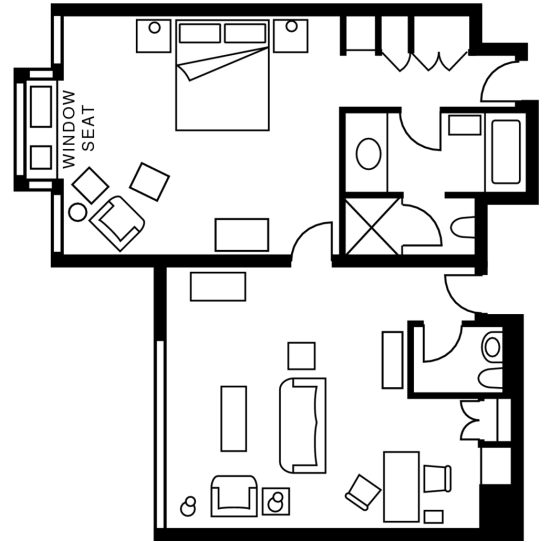
#### Suites Overview

Four Seasons offers seven spacious suites – adding privacy, discretion and comfort. The five One-Bedroom Suites feature large bay windows overlooking the River Thames in both the king bedroom and the living room – which also includes a dining area. On the sixth floor, the expansive Penthouse Suite has multiple bay window seats with inspiring river views, a pantry with full wet bar, a spacious living room, an executive work area, a dining area for intimate meals and a discreet service entrance. The magnificent Presidential Suite enjoys panoramic views of the River Thames and the city of London from its seventh-floor location. Its many features include an oversized living area, a pantry, dining for up to eight guests and a massive master bedroom. Both the Penthouse Suite and the Presidential Suite may be converted into a two- or three-bedroom suite.

**FOUR SEASONS EXECUTIVE SUITE**

Number 6  
Beds King bed  
Size 56 m<sup>2</sup>  
600 sq ft

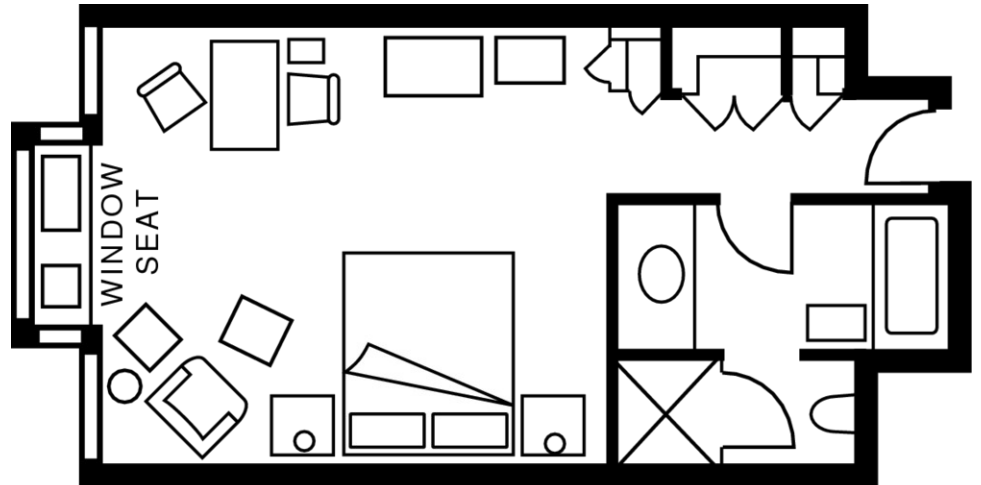
*Location*  
Third to seventh floors  
*View*  
River Thames



**DELUXE ROOM**

Number 52  
Beds King bed or two twin beds  
Size 37 m<sup>2</sup>  
400 sq ft

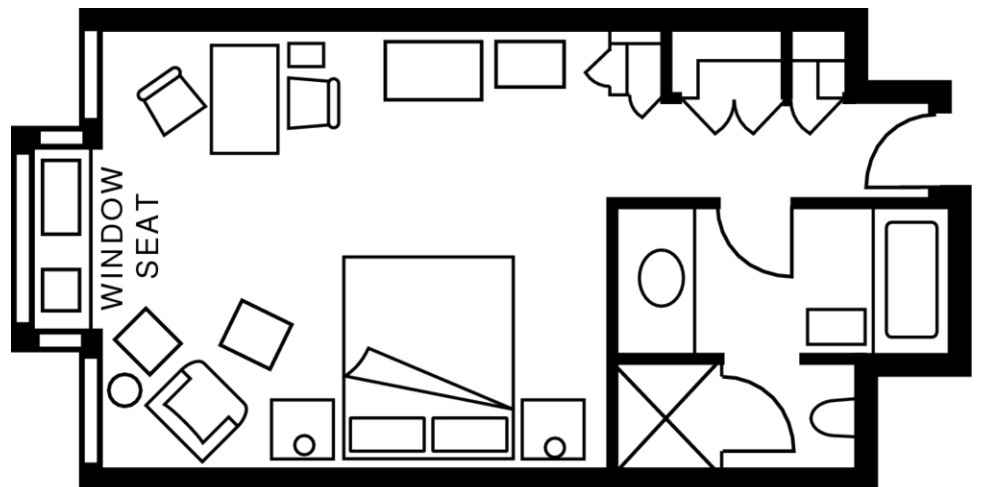
*Location*  
Second to eighth floors  
*View*  
River Thames



**SUPERIOR CANARY WHARF-VIEW ROOM**

Number 40  
Beds King bed or two twin beds  
Size 37 m<sup>2</sup>  
400 sq ft

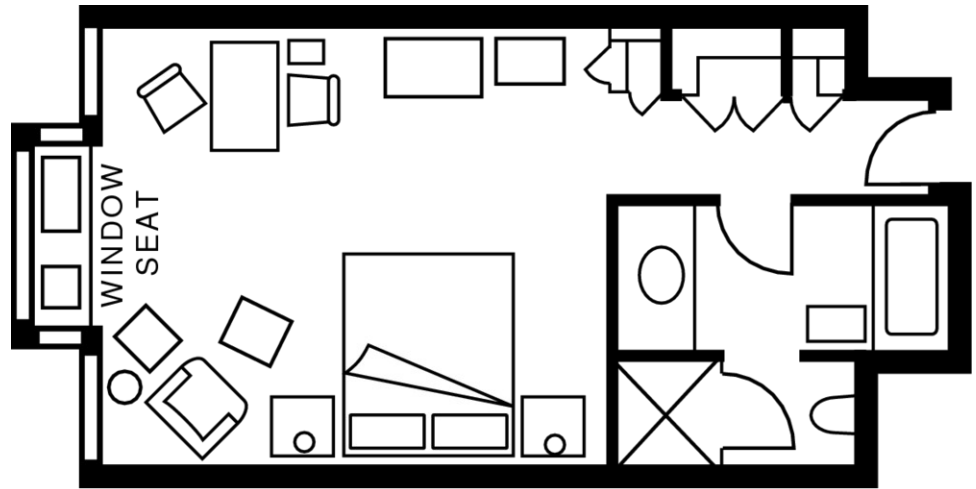
*Location*  
5th to 8th floors  
*View*  
Canary Wharf



CANARY WHARF-VIEW ROOM

Number 28  
Beds King bed  
Size 37 m<sup>2</sup>  
400 sq ft

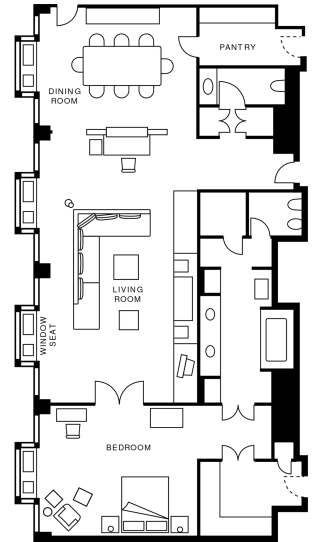
Location  
Second to fourth floors  
View  
Canary Wharf



PRESIDENTIAL SUITE

Number 1  
Beds King bed  
Size 223 m<sup>2</sup>  
2,400 sq ft

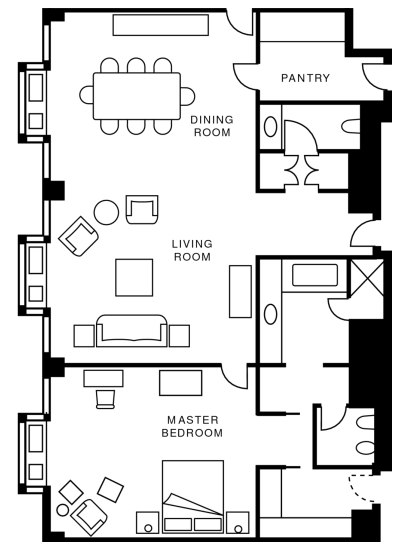
Location  
Seventh floor  
View  
River Thames and City of London



PENTHOUSE SUITE

Number 1  
Beds King bed  
Size 149 m<sup>2</sup>  
1,600 sq ft

Location  
Sixth floor  
View  
River Thames



ONE-BEDROOM SUITE

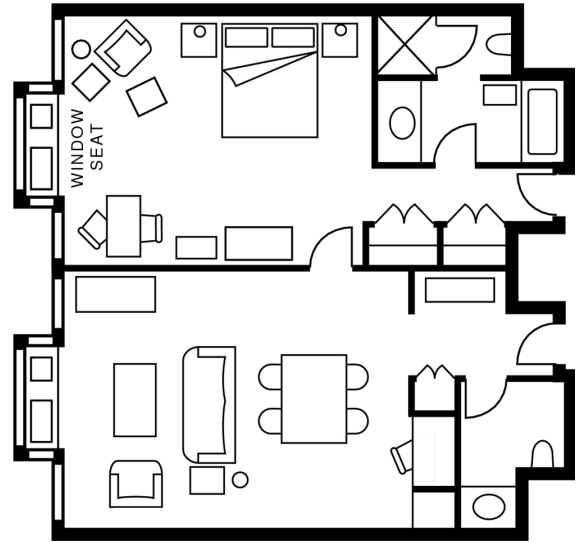
Number 3  
Beds King bed  
Size 74 m<sup>2</sup>  
800 sq ft

Location

Eighth floor

View

Riverfront view of the Thames



#### AMENITIES

- All news cable network
- Clock radio
- Complimentary newspaper with breakfast
- Down duvets
- Down pillows
- Fax machine on request
- Hair dryer
- Hypo-allergenic pillows on request
- In-room safe
- Multi-line telephone(s) with voicemail
- Refrigerated private bar
- Thick terry bathrobes
- Twice-daily housekeeping service
- Wired or wireless Internet access

#### GUEST SERVICES

- 24-hour In-Room Dining
- 24-hour laundry/dry-cleaning/pressing
- 24-hour multilingual Concierge
- Complimentary overnight shoeshine
- Non-smoking rooms
- One-hour pressing
- Restaurant
- Services and amenities for younger guests
- Umbrellas
- Valet parking

#### VIP GIFTS AND WELCOME AMENITY

Special arrangements can be made for clients to purchase welcome amenities and gifts for their VIP guests. These include fruit bowls and baskets, chocolate, cheese, nuts, sweets, pastries and cookies.

---

DINING HOURS OF OPERATION

---

*Quadrato Restaurant*

Breakfast 6:30 am - 11:30 am  
(Monday to Friday)

Breakfast 8:00 am - 11:00 am  
(Saturday and Sunday)

Brunch 12:30 pm - 3:00 pm  
(Sunday)

Lunch noon - 3:00 pm  
(Monday to Saturday)

Dinner 6:00 pm - 10:30 pm  
(Daily)

---

*Bar Quadrato*

Light fare (Monday to Saturday) 11:00 am - 11:00 pm

Light fare (Sunday) 11:30 am - 10:30 pm

Afternoon tea 3:00 pm - 6:00 pm

---

*In-Room Dining*

Breakfast 6:00 am - 11:00 am

All-day dining 11:00 am - 11:00 pm

Children's menu 7:00 am - 11:00 pm

Owl menu 11:00 pm - 6:00 am

---

DINING

Four Seasons offers contemporary northern Italian cuisine in the trend-setting environment of Quadrato Restaurant, one of Canary Wharf's most stylish eateries, where summer dining is available on the outdoor riverside terrace. In the Hotel's lobby, the chic Bar Quadrato features a dramatic three-storey setting, its high windows taking in entrancing river views.

RESTAURANTS

*Quadrato Restaurant*

This vibrant and intimate restaurant is a stylish dining experience. Quadrato Restaurant offers the delicious cuisine of Northern Italy, prepared with the freshest ingredients. The atmosphere is one of contemporary and refined simplicity with Italian style, offering a casual yet lively ambience. During the summer months, guests can dine al fresco on the terrace, overlooking manicured gardens by the River Thames.

- Cuisine: Modern Italian
- Indoor seating: 100
- Outdoor seating: 30

LOUNGES

*Bar Quadrato*

Invitingly located in the lobby, at the centre of the Hotel, Bar Quadrato is the popular happening place in Canary Wharf's vibrant business district. Spectacular high windows open onto the terrace, with views of the gardens by the Thames. Bar Quadrato features Italian specialties, light meals, cocktails and refreshments in a contemporary setting. It also serves afternoon tea, offering a selection of finger sandwiches, scones, pastries, coffees, herbal infusions and specialty organic teas.

- Indoor seating: 30

## RECREATION FACILITIES

Four Seasons Hotel London at Canary Wharf offers endless opportunities for exploring, exercising or seeking out entertainment. Guests may work out in Hotel's second-floor fitness centre or slip next door for complementary access to the Virgin Active Health Club with its innovative Dove Spa, infinity-edge pool and tennis court. Other possibilities include relaxing strolls or memorable runs through Canary Wharf's parks and riverside promenades. For off-site activities, the Four Season Concierge can take care of all the arrangements.

## SPA SERVICES

Escape to the River-View Treatment Suite at Four Seasons Hotel London at Canary Wharf and revel in the privacy and atmosphere of this generously sized suite, designed to accommodate individuals or pairs. Wind down instantly as the movement of the mighty River Thames comes into focus through the sweeping picture windows. De-stress under the influence of rose and jasmine fragrances, revitalise with willow and marigold, and restore with ginger and arnica. All-natural organic products from the Organic Pharmacy ensure that your body is nourished with ingredients found in nature.

Offering you the freedom to choose the length of your massage and the type of aromatic oil and pressure used, our therapists can tailor treatments to meet your unique needs.

## FITNESS FACILITIES

Guests of Four Seasons Hotel London at Canary Wharf enjoy complimentary access to Virgin Active Health Club. Located adjacent to the Hotel, this stunning riverside oasis is the perfect place in which to combat the physical effects of modern living and bring harmony into your life.

- Size: 4,087 m<sup>2</sup> / 44,000 sq ft

## POOL

Guests of Four Seasons Hotel London at Canary Wharf enjoy complimentary access to the Virgin Active Health Club, conveniently located adjacent to the Hotel. A key feature of the Club is the heated, 20-metre (65-foot) infinity-edge swimming pool, which is situated in a specially designed building with floor-to-ceiling glass walls, overlooking the River Thames on one side and beautifully landscaped gardens on the other.

## TENNIS

Guests of Four Seasons Hotel London at Canary Wharf enjoy private access to the stunning health club and sports facilities of Virgin Active at Canary Riverside, right next door to the Hotel. The facility offers a floodlit tennis court.

## INCENTIVE ACTIVITIES

### Sample itinerary

---

#### Day 1            Arrival at the Hotel

##### Morning

- Arrival and transport from airport to Hotel (15 minutes by taxi or DLR from City Airport).
- Breakfast in Quadrato - a variety of choices includes homemade granola or Belgian waffles with whipped cream and strawberries.

##### Afternoon

- Enjoy a light lunch with a view of the Thames at one of the riverside establishments in front of the Hotel.
- Relax in the infinity pool at the adjacent Virgin Active Health Club, or pamper yourself with a holistic treatment in our River-View Treatment Suite.

##### Evening

- A welcome reception can be organised on the terrace overlooking the Canary Riverside garden. Alternatively, enjoy drinks and dinner in one of our private rooms overlooking the river.
- 

#### Day 2            The markets

##### Morning

- Accompany Marco Bax, the Hotel's Executive Chef, to Borough Market, one of London's oldest markets. Marco will introduce you to some of the Hotel's suppliers of cheeses and vegetables and select produce for the evening dinner menu. The market, located next to London Bridge tube station, is open on Fridays and Saturdays only.
- Alternatively, visit Billingsgate Fish Market, located in Canary Wharf just a short drive from the Hotel. To catch the best of the market means an early start, but guests will enjoy the banter and energy of a market that has existed for over 300 years.

##### Afternoon

- Browse some of London's hippest galleries - in the East End, a part of town that most locals are unaware is home to the latest exhibitions and art movements.
- Embark on a classic Black Cab tour of East London - you and your colleagues will compete in an adventurous treasure hunt, touring the lesser-known landmarks of this part of the city.

##### Evening

- Enjoy an afternoon of leisure, and then take part in a cookery masterclass conducted by Marco Bax in Quadrato restaurant, using items bought from the markets. Guests will dine in Quadrato knowing they had a hand in choosing the finest and freshest ingredients possible.
- 

#### Day 3            The river

#### Morning

- Be welcomed aboard the Sailing Barge at Canary Wharf Pier, and enjoy breakfast en route to the clay pigeon shooting site just past Thames Barrier.
- After arriving at Thames Barrier, try your hand at clay pigeon shooting.
- Other options on the Sailing Barge include wine tastings and cooking lessons.

#### Afternoon

- Board the Thames Clipper or a private boat and travel downstream to historic Greenwich to visit the Cutty Sark, Maritime Museum and markets.

#### Evening

- Hire a private boat for cocktails and a private dinner cruise along the river.
  - Drinks at the bar and dinner at the restaurant of the nearby Plateau offer a buzzing atmosphere reflective of the young, local corporate crowd.
-

