



Quick Reference Guide

Last updated May 3, 2012 | For additional information please contact the hotel directly

Four Seasons Hotel Boston
200 Boylston Street, Boston, Massachusetts, 02116, U.S.A.
Tel 1.617.338.4400 | Fax 1.617.423.0154 | Res 1.617.351.2036

www.fourseasons.com/boston



Overlooking Boston's famed Public Garden, Four Seasons brings a fresh perspective to this historic American city. Within easy reach of every notable business, entertainment and cultural attraction, this sophisticated address welcomes guests to an intimate and inviting personal sanctuary.

200 Boylston Street
Boston, Massachusetts 02116,
U.S.A.
Tel 1.617.338.4400
Fax 1.617.423.0154
Res 1.617.351.2036

AIRPORT

- Logan International Airport (BOS):
20 minutes (4 miles/6.4 kilometres)

TABLE OF CONTENTS

- 2 *Introduction*
- 4 *Destination*
- 8 *Conference Facilities*
- 17 *Guest rooms, Suites and Private Residences*
- 23 *Dining*
- 24 *Recreational Facilities*
- 26 *Appendix: Conference Chart*



In a supremely convenient location, Four Seasons provides a spectacular venue for business events and meetings. State-of-the-art function spaces seamlessly blend a mood of grandeur with a sense of ease.

Many of the 273 guest rooms and suites offer views of the historic Public Garden, Beacon Hill and the gilded dome of the Massachusetts State House. Dining delights with the warm comfort of The Bristol. For recreation, choices range from the garden-view pool and fitness centre to soothing spa services.

With thoughtfully personalised care, Four Seasons Hotel Boston offers an enclave of traditional charm and innovative flair.

TRANSPORTATION

Boston's Logan International Airport is a major national/international airport, and Boston is considered the centre of New England's bus and rail services. It is served by

three interstate highways connecting the city to the national highway system, including the Massachusetts Turnpike, which allows drivers to travel from the border of New York straight into downtown Boston.

Public transportation is easily accessible from the Hotel. Please ask the Concierge for additional information or directions.

Note: There are two Boylston Street locations in the city of Boston. For guests using an electronic navigation system to locate Four Seasons Hotel Boston, please be sure to include the zip code 02116.

WEATHER CHART

Month	°F		°C	
	Highs/Lows	Highs/Lows	Highs/Lows	Highs/Lows
January	36	/ 23	2	/ -5
February	38	/ 24	3	/ -4
March	45	/ 32	7	/ 0
April	57	/ 41	14	/ 5
May	67	/ 50	19	/ 10
June	77	/ 59	25	/ 15
July	82	/ 65	28	/ 18
August	80	/ 64	27	/ 17
September	72	/ 57	22	/ 14
October	63	/ 47	17	/ 8
November	52	/ 39	11	/ 4
December	40	/ 27	4	/ -3

DESTINATION

Boston is the capital of Massachusetts and the state's largest city – serving as the gateway to New England. Located on Massachusetts Bay at the mouths of the Charles and Mystic Rivers, Boston is also the nearest major US seaport to Europe.

Boston played a crucial role in the birth of the American nation – from the arrival of a handful of pilgrims to the Revolutionary War to the Civil Rights debates. The city provides a rich opportunity to discover the events and people responsible for the creation of the United States – commemorated in a wealth of emblematic and evocative colonial-era sights. Rising alongside these historic landmarks are bold skyscrapers, reflecting the city's modern commercial success.

WEATHER

Boston, a year-round destination, has changeable weather. Warm breezes and sunny skies usher spring into the city, while summer brings long, bright days and starry skies at night. Mellow autumn hues complete the picture before winter arrives with temperatures averaging just below freezing.

LOCAL ATTRACTIONS AND ACTIVITIES

At Four Seasons, you enjoy a unique vantage point from which to explore the sights, sounds and experiences around you. We hope the highlights of local attractions below help simplify your planning. Please let us know how else we can assist you.

Within a few minutes walk of the Hotel

The Boston Common:

- Steeped in history, the oldest public park in America is an excellent spot for picnics, outdoor concerts and sports.

The Boston Public Garden:

- The oldest botanical garden in America, located across Charles Street from the Boston Common, it remains a green and flowering oasis in the heart of the city. Take some time for a slow Swan Boat ride on the lagoon. They operate, weather permitting, from mid April to mid September. Fifteen-minute long cruises are offered daily.

The Freedom Trail:

- The 2.5-mile (4-kilometre) Freedom Trail travels through 16 historic sites in Beacon Hill, downtown Boston, the North End and Charlestown. A red brick or painted line connects the sites on the Trail and serves as a guide. Walking the Trail takes two or three hours – although you may prefer to linger and study the many exhibits along the way – and covers two and a half centuries of American history. In addition to the historic sites, the beauty of the sights, sounds and neighbourhoods along the way makes walking the Freedom Trail a popular activity. Regularly scheduled walking tours with colonial costumed characters, self-guided antenna audio tours, trolley tours and harbour tours are available. The Freedom Trail's starting point in the Boston Common is just a two-minute walk from the Hotel.

Within a 5-minute walk of the Hotel

The State House:

- Designed by Charles Bulfinch and completed in 1798, it features a 23-carat gilded dome with an under layer of copper installed by Paul Revere.

The Wang Center for the Performing Arts:

- One of Boston's most important historic landmarks of the Roaring Twenties and the city's largest theatre. Modelled after the Paris Opéra Comique, The Wang Center serves as the home of the Boston Ballet and hosts numerous community events and large-scale Broadway productions.

Within a 10-minute walk of the Hotel

Boston Public Library:

- An excellent rare book collection amidst an unparalleled collection of yesterday's and today's reading. Art and Architecture Tours conducted Monday 2:30 pm, Tuesday and Thursday 6:00 pm, Friday and Saturday 11:00 am.

Granary Burying Ground:

- A famous, two-acre (0.8-hectare) 17th-century graveyard, it is the burial site of Benjamin Franklin's parents, Paul Revere, Samuel Adams, John Hancock, Robert Treat Paine, and the victims of the Boston Massacre.

The Boston Ballet:

- One of the nation's premier dance companies, the Ballet performs an eclectic mix of classic story ballets and avant-garde works at the Wang Center.

Vose Galleries of Boston:

- America's oldest family-owned art gallery specialising in 18th, 19th and early 20th century American Art.

Within a 15-minute walk of the Hotel

The First and Second Church of Boston:

- First Church, founded in 1630, and Second Church, founded in 1649, merged in 1970 as a Unitarian Universalist Church. The congregation included such notables as Paul Revere, Henry David Thoreau, and Ralph Waldo Emerson.

The Institute of Contemporary Art:

- Conceived by award-winning architects Diller Scofidio + Renfro, this exceptional building offers a unique space for experiencing contemporary art and dynamic areas for public enjoyment. The design blends interior and exterior space, providing views of the waterfront throughout the museum's galleries.

Within a 20-minute walk of the Hotel

Faneuil Hall:

- Built in 1742, this public hall is known as the "Cradle of Liberty" owing to the many speeches made there calling for freedom and independence during the Revolutionary movement. Extensively renovated in 1992, the 4th floor contains The Ancient and Honorable Artillery Company of Massachusetts. This museum holds paintings of famous battles and military weaponry.

Within a 5-minute drive of the Hotel

TD Banknorth Garden:

- Home of the National Hockey League's Boston Bruins and the National Basketball Association's Boston Celtics. Ask the Concierge about special shows and concerts.

Within a 10-minute drive of the Hotel

The U.S.S. Constitution:

- Launched in 1797, the Constitution is the oldest commissioned warship afloat in the world. During the War of 1812 she earned the nickname of "Old Ironsides".

Boston Symphony Orchestra:

- Established in 1880, this is one of the world's finest orchestras. The BSO offers a diverse program with a roster of guest conductors and soloists.

Fenway Park:

- Originally opened in 1912, Fenway Park is home of the Boston Red Sox (American League baseball). Ask the Concierge about special shows and concerts. Tours run daily between 9:00 am and 4:00 pm (or three hours before home game time).

Museum of Fine Arts:

- This century-old museum is famous for its Egyptian and Asian collections, as well as American and European art. It is considered second only to New York's Metropolitan Museum of Art and has one of the largest Impressionist collections outside of France.

Within a 15-minute drive of the Hotel

Bunker Hill Monument:

- The site of the first major battle of the Revolutionary War in 1775, the 221-foot (67.4-metre) granite obelisk contains a spiral staircase to the top, providing a spectacular view of the area. Tours given throughout the day.

Old North Church:

- The oldest church building in Boston, dating from 1723, originally housed an Anglican congregation. It is now designated as Episcopalian. It was from its spire that Robert Newman hung the lanterns that sent Paul Revere on his ride. The window itself was bricked over then rediscovered and restored in 1989. Sunday church services 9:00 am, 11:00 am, and 5:00 pm.

New England Aquarium:

- Housing the world's largest ocean tank with a coral reef and over 2,000 aquatic creatures, including sharks, giant sea turtles, and moray eels. New England Aquarium Whale Watch: May 1 to November 7. Select from a four, five or six hour tour out on the Atlantic Ocean.

Boston Harbor Cruises:

- Available in Boston Harbor and nearby areas. 45 or 90 minute cruises with narrated, guided tours providing a brief history of harbor islands and the surrounding Boston

area.

Isabella Stewart Gardner Museum:

- An exquisite Venetian palazzo reconstructed by Mrs. Jack Gardner to showcase her personal collection of art and sculpture. The collection includes Renaissance art, Italian furnishings, tapestries and an indoor courtyard filled with fresh flowers year-round.

Within a 20-minute drive of the Hotel

John F. Kennedy Library and Museum:

- Designed by I.M. Pei, this is the nation's official memorial to John Fitzgerald Kennedy, 35th president of the United States. Period settings from the White House and twenty-five multimedia exhibits create a stirring account of President Kennedy's thousand days in office.

Museum of Science:

- Visit modern exhibits on everything from space exploration to microscopic views of anthropology and the natural sciences.

Within a 30-minute drive of the Hotel

Salem Witch Museum:

- Discover a dramatic look at the Salem witch trials of 1692. Relive the story of afflicted girls, false accusations and innocent victims. Then experience Witches: Evolving Perceptions, an exhibit that traces changes in the meaning of the word 'witch' and examines incidents of witch hunting.

Within a 40-minute drive of the Hotel

Gillette Stadium:

- Home of the National Football League's New England Patriots and Soccer-home of the New England Revolution. Ask the Concierge about special shows and concerts.

CONFERENCE FACILITIES OVERVIEW

Total Space	20,124 sq.ft. 1,869 m ²
Largest Ballroom	3,710 sq.ft. 345 m ²
Meet and Feed (max. capacity)	250
Breakouts	14
Banquet (max. capacity)	360
Outdoor Banquet (max. capacity)	-
Private Dining (max. capacity)	16

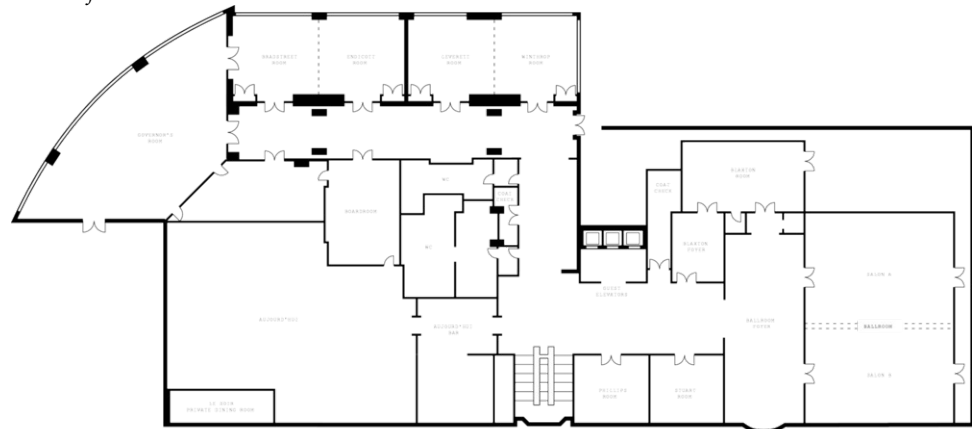
CONFERENCE FACILITIES

The undisputed choice for New England’s most important social gatherings and business meetings, Four Seasons Hotel Boston offers 20,124 square feet (1,869 square metres) of event space. The 16 function rooms – many named for celebrated Bostonians – are designed to accommodate groups as small as 15 and as large as 500. Most event spaces are located on the second floor in a layout that allows for flexibility and customisation. For added privacy, additional meeting rooms are secluded on the fifth floor in our Executive Meeting Wing.

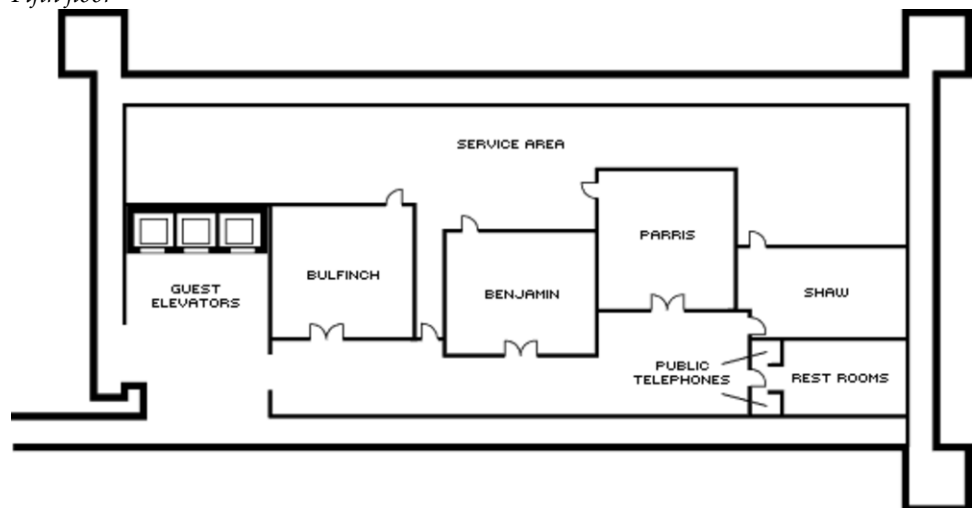
Hosting formal dinners for up to 325 guests, the Ballroom harmonises gracious aesthetics with the latest presentation technology. For cocktail receptions, the Governor’s Room – with its curved wall of windows – accommodates up to 225.

Banquet services include a fully dedicated kosher kitchen endorsed and supervised by the Kashruth Commission of Boston.

Second floor



Fifth floor



TECHNICAL ASSISTANCE

Swank Audio Visuals maintains an office in the Hotel with audiovisual equipment and technicians.

State-of-the-art audiovisual equipment includes:

- Front and rear data projection
- Video and telephone conferencing
- Digital audio and video recording
- High-definition presentations
- Illuminated custom gobos, spotlights, highlights, decorative floor uplighting or intelligent lighting
- Laptops, printers and business machines

MUSIC AND ENTERTAINMENT

Hotel conference coordinators will be happy to assist with setting up any type of music or entertainment for your meeting.

RECEIVING AND MAINTENANCE

Shipping and receiving open from Monday to Friday, 7:00 am to 4:00 pm. 24-hour hotel maintenance available.

DESTINATION MANAGEMENT

Four Seasons Conference Coordinators can help accommodate your group's special requests. For detailed information, please contact the Hotel directly. In addition, we recommend the following destination management companies:

BUSINESS SERVICES

Around the clock, Four Seasons Hotel Boston can assist you with business, entertainment or travel arrangements through the Business Center and resourceful, multilingual Concierge.

For time-pressed travellers, our expanded wireless Business Center, the e Center, includes:

- Standing kiosks with touch screens
- Wireless keyboard and mouse at each work station
- Printers and colour copier
- 24-hour business services
- Airline reservation service
- Audiovisual equipment
- Computers
- Express check-in/check-out
- Japanese translation and interpretation service
- Secretarial service
- Translation and interpretation service
- Wired or wireless Internet access in meeting rooms

SPOUSE PROGRAMMES

Four Seasons Hotel Boston is pleased to assist in organising a programme to fit the individual needs and budgets of each group.

- Chef's demonstrations
- Special interest speakers

- Fitness/spa treatments
- Beauty consultants for specialised programs
- Fashion shows
- Aerobics
- Fitness and health breaks
- Sight-seeing tours
- Shopping trips
- Sporting events

CHILDRENS AND FAMILY PROGRAMMES

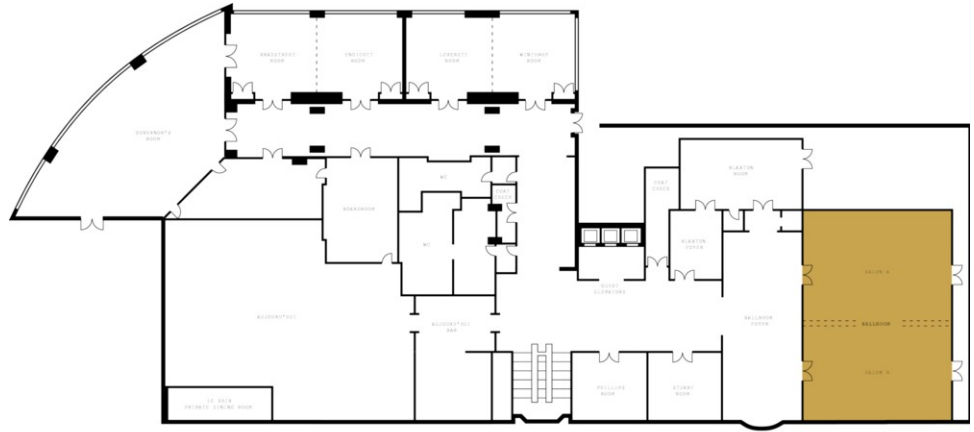
The Concierge will help children and their parents find things to do that will create special memories for the entire family. Possibilities range from exploring Boston Common and the Freedom Trail to a visit to Franklin Park Zoo, Fenway Park (the Boston Red Sox Stadium), the New England Aquarium or the USS *Constitution*.

BALLROOM

Dimensions	70 x 53 ft 21.3 x 16.2 m
Size	3,710 sq.ft. 344 m ²
Height	13.7 ft 4.2 m

Capacities

Classroom	216
Hollow square	103
U Shape	75
Theatre	450
Reception	500
Banquet Rounds	336

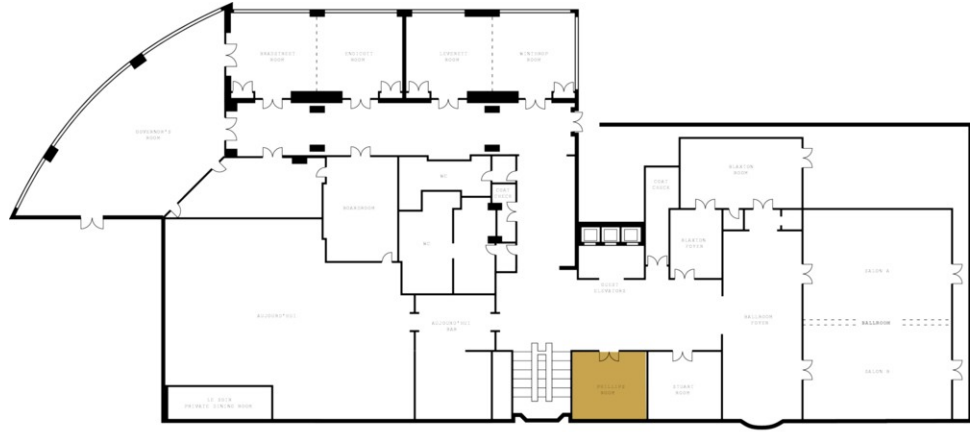


PHILLIPS ROOM

Dimensions	27 x 27 ft 8.2 x 8.2 m
Size	729 sq.ft. 68 m ²
Height	11.5 ft 3.5 m

Capacities

Classroom	48
Hollow square	36
U Shape	27
Theatre	60
Reception	60
Banquet Rounds	48



STUART ROOM

Dimensions	27 x 27 ft 8.2 x 8.2 m
Size	729 sq.ft. 68 m ²
Height	11.5 ft 3.5 m

Capacities

Classroom	48
Hollow square	36
U Shape	27
Theatre	60
Reception	60
Banquet Rounds	48



WINTHROP ROOM

Dimensions 25 x 26 ft
7.6 x 7.9 m
Size 650 sq.ft.
60 m²
Height 12 ft
3.7 m

Capacities

Classroom 33
Hollow square 24
U Shape 25
Theatre 60
Reception 55
Banquet Rounds 36



LEVERETT ROOM

Dimensions 25 x 26 ft
7.6 x 7.9 m
Size 650 sq.ft.
60 m²
Height 12 ft
3.7 m

Capacities

Classroom 33
Hollow square 24
U Shape 18
Theatre 60
Reception 55
Banquet Rounds 36



ENDICOTT ROOM

Dimensions 25 x 26 ft
7.6 x 7.9 m
Size 650 sq.ft.
60 m²
Height 12 ft
3.7 m

Capacities

Classroom 33
Hollow square 24
U Shape 18
Theatre 60
Reception 55
Banquet Rounds 36



BRADSTREET ROOM

Dimensions 26 x 27 ft
7.9 x 8.2 m
Size 689 sq.ft.
64 m²
Height 12 ft
3.7 m

Capacities

Classroom 33
Hollow square 24
U Shape 18
Theatre 60
Reception 55
Banquet Rounds 36

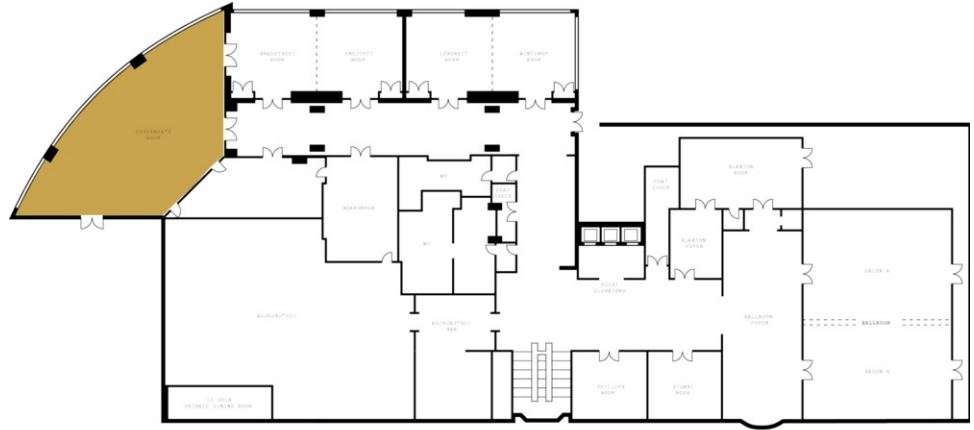


GOVERNOR'S ROOM

Dimensions 42 x 62 ft
12.8 x 18.9 m
Size 2,604 sq.ft.
242 m²
Height 13 ft
4 m

Capacities

Classroom 108
Hollow square 54
U Shape 45
Theatre 250
Reception 225
Banquet Rounds 144

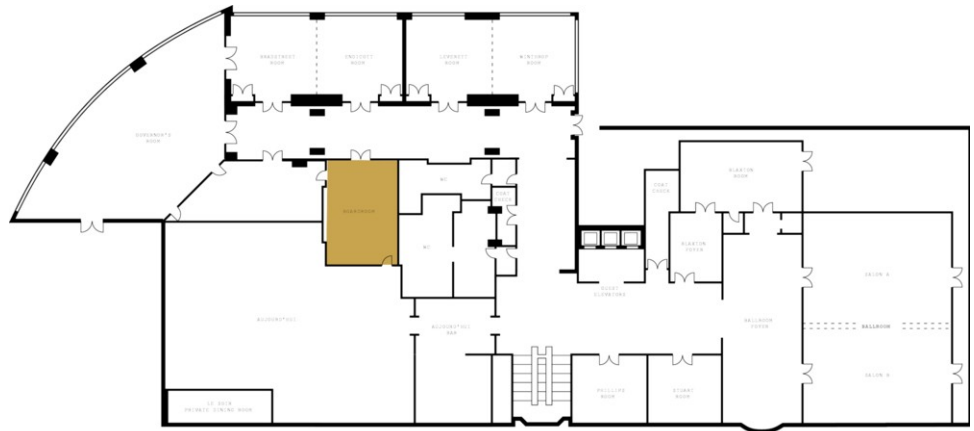


BOARDROOM

Dimensions 31 x 22 ft
9.4 x 6.7 m
Size 682 sq.ft.
63 m²
Height 12 ft
3.7 m

Capacities

Boardroom 16



BLAXTON ROOM

Dimensions 24 x 25 ft
7 x 8 m
Size 600 sq.ft.
56 m²
Height 9.8 ft
3 m

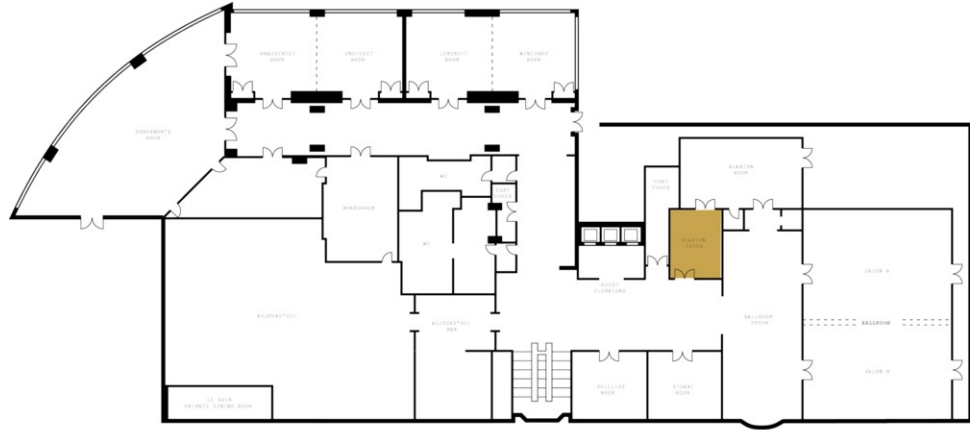
Capacities

Classroom 36
Hollow square 24
U Shape 18
Theatre 40
Reception 50
Banquet Rounds 36



BLAXTON FOYER

Dimensions 16 x 19 ft
5 x 6 m
Size 304 sq.ft.
30 m²
Height 10 ft
3 m

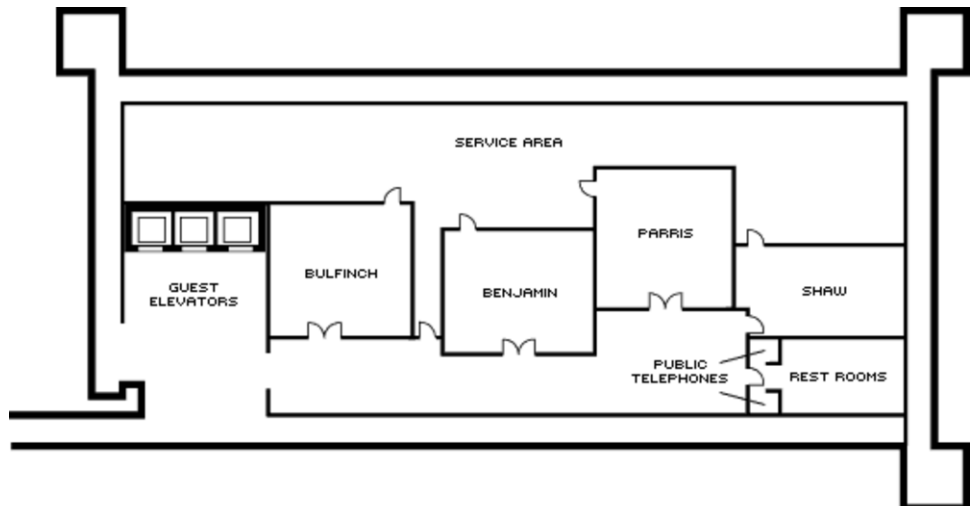


BULFINCH ROOM

Dimensions 22 x 20 ft
6.7 x 6.1 m
Size 440 sq.ft.
41 m²
Height 8.5 ft
2.6 m

Capacities

Classroom 18
Hollow square 22
U Shape 18
Theatre 40
Reception 40
Banquet Rounds 36

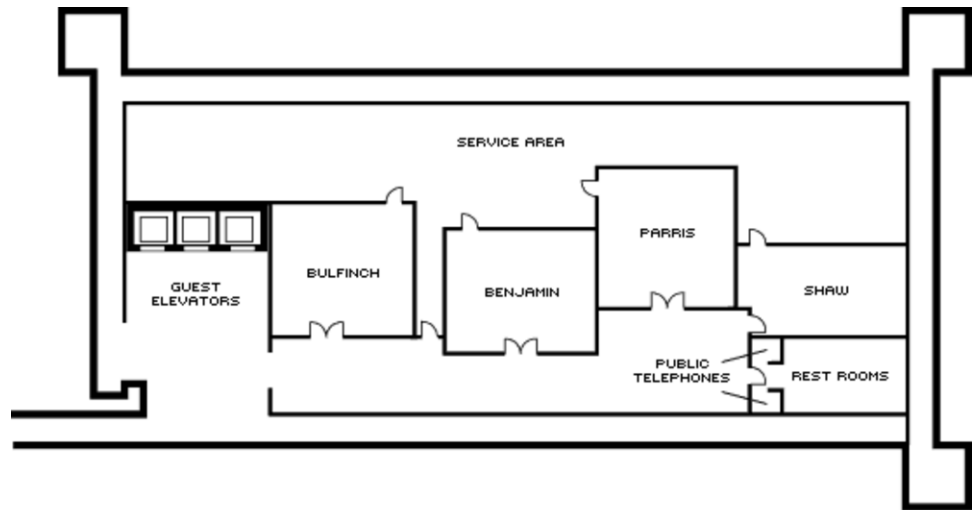


BENJAMIN ROOM

Dimensions	24 x 24 ft
	7.3 x 7.3 m
Size	576 sq.ft.
	54 m ²
Height	8.5 ft
	2.6 m

Capacities

Classroom	18
Hollow square	22
U Shape	18
Theatre	40
Reception	40
Banquet Rounds	36

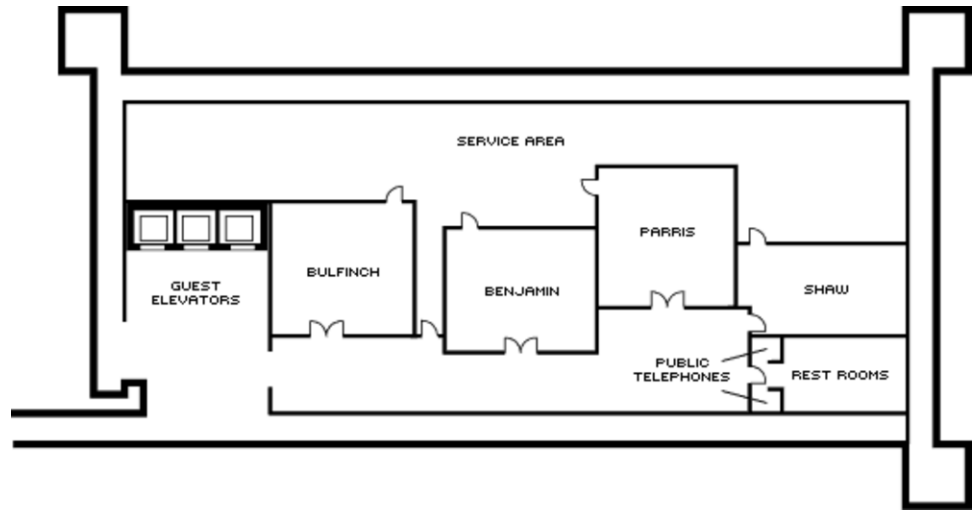


PARRIS ROOM

Dimensions	25 x 25 ft
	7.6 x 7.6 m
Size	625 sq.ft.
	58 m ²
Height	7.7 ft
	2.3 m

Capacities

Classroom	30
Hollow square	24
U Shape	20
Theatre	48
Reception	40
Banquet Rounds	48

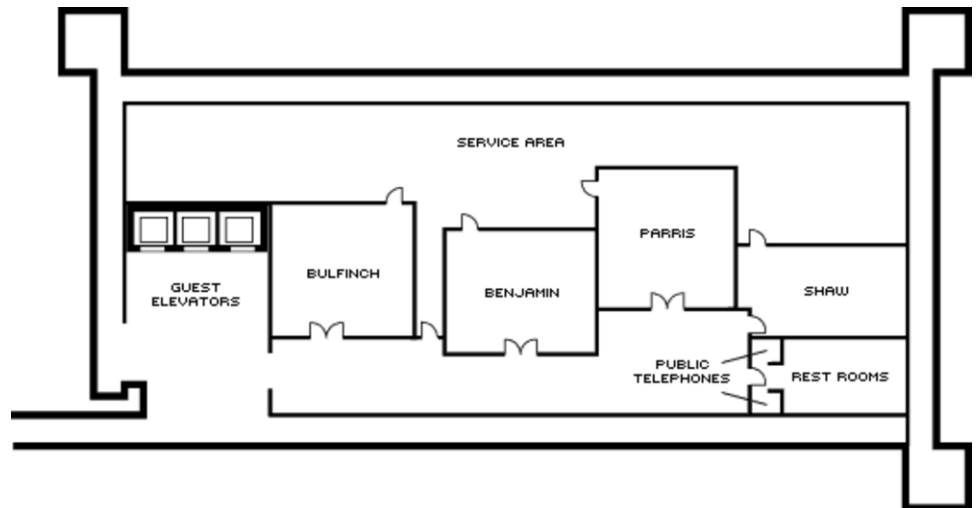


SHAW ROOM

Dimensions	25 x 18 ft
	7.6 x 5.5 m
Size	450 sq.ft.
	42 m ²
Height	8.5 ft
	2.6 m

Capacities

Classroom	18
Hollow square	22
U Shape	14
Theatre	48
Reception	40
Banquet Rounds	48



GUEST ROOMS, SUITES AND PRIVATE RESIDENCES OVERVIEW

Four Seasons Hotel Boston offers the flexibility of 273 guest rooms, including 77 suites. Many offer views of the Public Garden, Beacon Hill and the gilded dome of the State House, while some overlook a landscaped plaza and city streets.

Modern New England design uses a simple neutral palette with gentle accent colours. The contemporary furniture and décor reflect iconic Beacon Hill influences. For business efficiency, all rooms have a glass-topped desk, a high-back chair, dual-line phones with voice mail and wired and wireless Internet access. Ensuite marble bathrooms include a bathtub and shower with premium toiletries.

Room Category	#	Beds	Size (sq ft)	Size (m ²)	View
- Deluxe Four Seasons Executive Suite – Garden View	22	1 King	625	58	Boston Common and Boston Public Garden
- Four Seasons Executive Suite	41	1 King	625	58	City
- Deluxe Garden-View Room	36	1 King or 2 double	400	37	Boston Public Garden
- Deluxe Room	134	1 King or 2 double	400	37	Hadassah Way, interior courtyard or city
- Superior Room	26	1 King	380	35	Interior courtyard or city
- Accessible Deluxe Room with Roll-in Shower		1 King	400	37	Hadassah Way, interior courtyard or city
- Accessible Deluxe Room		1 King	400	37	Hadassah Way, interior courtyard or city
- Presidential Suite	1	1 King	2,590	241	Boston Common and Boston Public Garden
- Ambassador Suite	1	1 King	1,700	158	Boston Public Garden
- Garden Suite	4	1 King	1,200	111	Boston Public Garden
- State Suite	6	1 King	900	84	Boston Common and the State House
- Senator Suite	2	1 King	825	77	Boston Public Garden

Guest Room Overview

The collection of 197 guest rooms offers spacious, light-filled comfort. With an inner position offering added tranquillity, Moderate Rooms feature city views, while Superior Rooms overlook the landscaped plaza. Deluxe Rooms include a comfortable sitting area, while Deluxe Garden-View Rooms are complemented by views of the Public Garden. The bay windows of Deluxe Four Seasons Executive Suites provide a charming view of the city, while the Garden View versions overlook the Public Garden.

Suites Overview

Ideal for private entertaining, family travel or lengthy stays, the 77 suites feature stunning views across Boston's historic Public Gardens to Beacon Hill and the gold-domed State House.

Sumptuous Senator Suites offer a more spacious alternative to Deluxe Four Seasons Executive Suites – featuring sleeping quarters discreetly separate from living and dining areas. The airy State Suites may be configured with either one or two bedrooms. Garden

Suites include two bedrooms, along with a parlour with a dining table for six.

The one-of-a-kind Ambassador Suite offers living space plus a dining table for six, a serving pantry and a master bathroom with twin sinks, a bidet, a separate shower and a deep soaking tub. The stylish Presidential Suite – available with one or two bedrooms – includes a living room with grand piano and balcony, a dining room with seating for 10, a well-equipped study and a lavish master bedroom with designer bath.

**DELUXE FOUR SEASONS EXECUTIVE
SUITE – GARDEN VIEW**

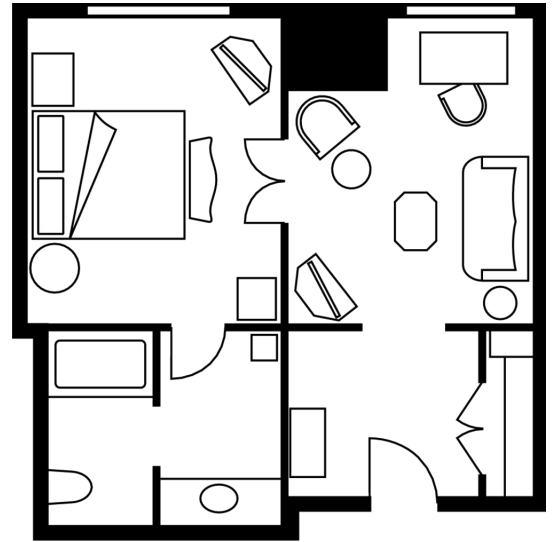
Number 22
Beds King bed
Size 625 sq ft
58 m²

Location

Throughout the Hotel

View

Boston Common and Boston Public
Garden



FOUR SEASONS EXECUTIVE SUITE

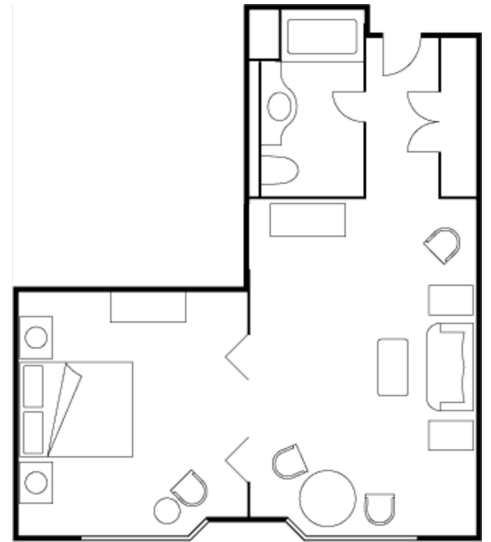
Number 41
Beds King bed
Size 625 sq ft
58 m²

Location

Throughout the Hotel

View

City



DELUXE ROOM

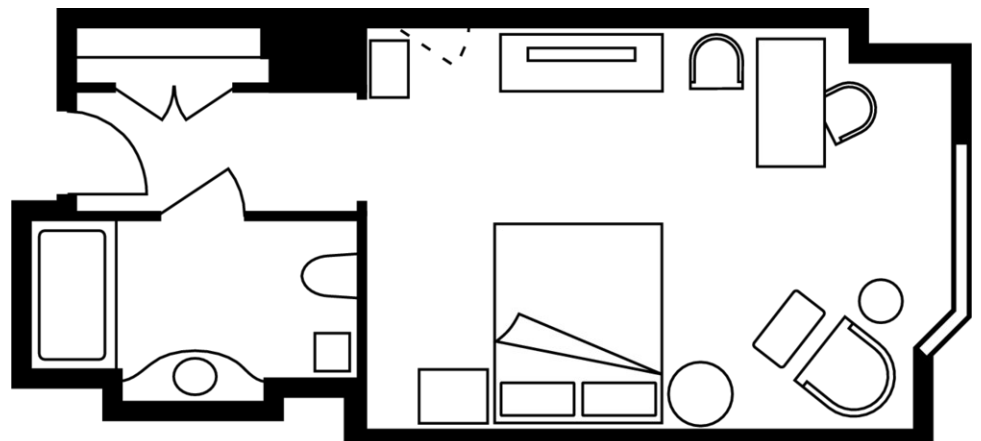
Number 134
Beds King or two double beds
Size 400 sq ft
37 m²

Location

3rd to 8th floor

View

Hadassah Way, interior courtyard or
city



SUPERIOR ROOM

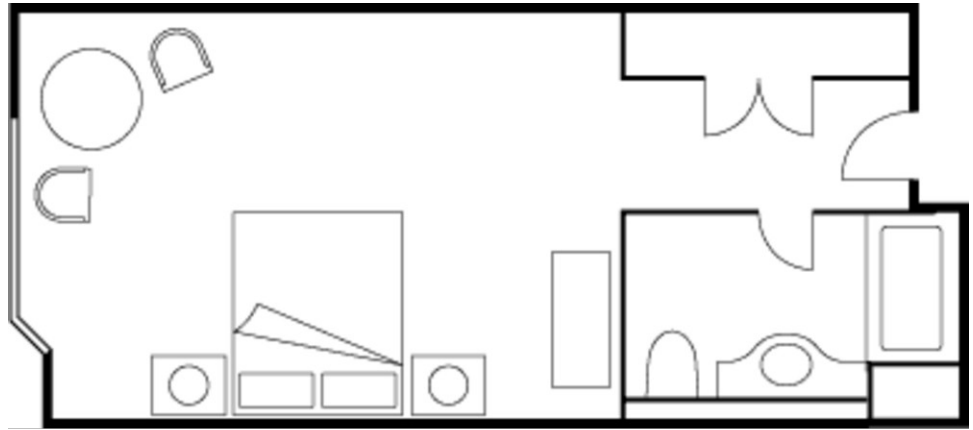
Number 26
Beds King bed
Size 380 sq ft
35 m²

Location

3rd to 8th floor

View

Interior courtyard or city



PRESIDENTIAL SUITE

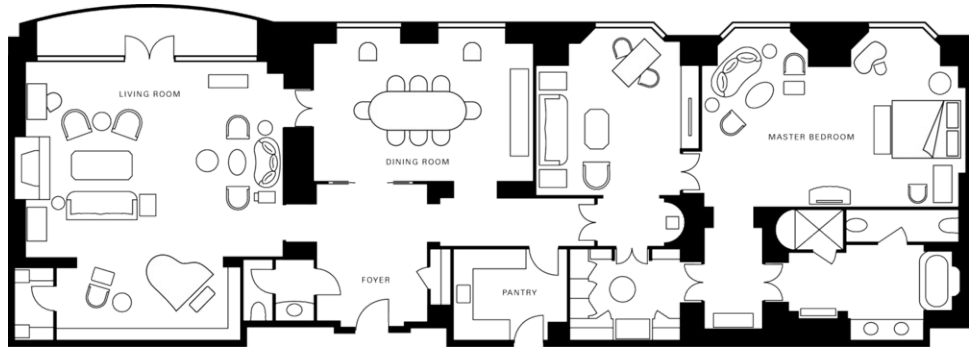
Number 1
Beds King bed
Size 2,590 sq ft
241 m²

Location

6th floor

View

Boston Common and Boston Public Garden



AMBASSADOR SUITE

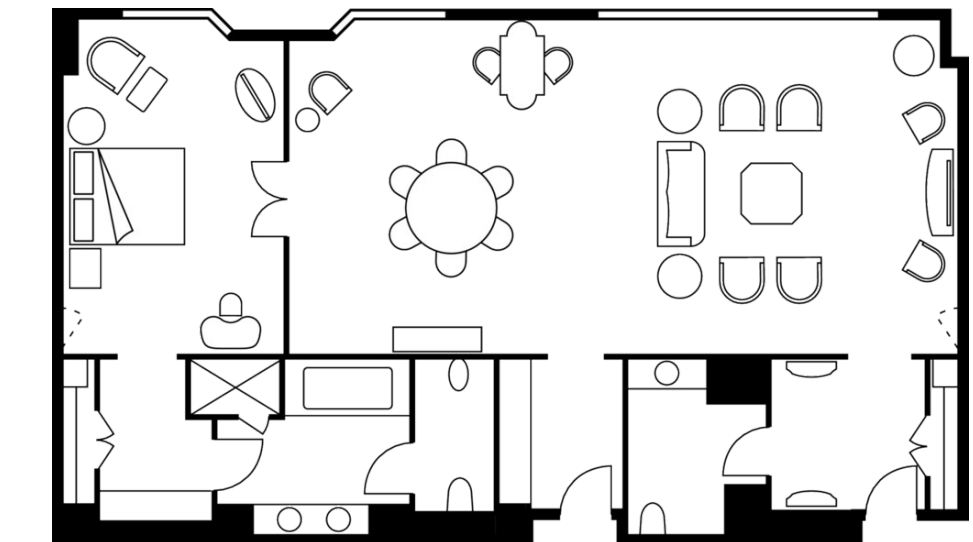
Number 1
Beds King bed
Size 1,700 sq ft
158 m²

Location

4th floor

View

Boston Public Garden



GARDEN SUITE

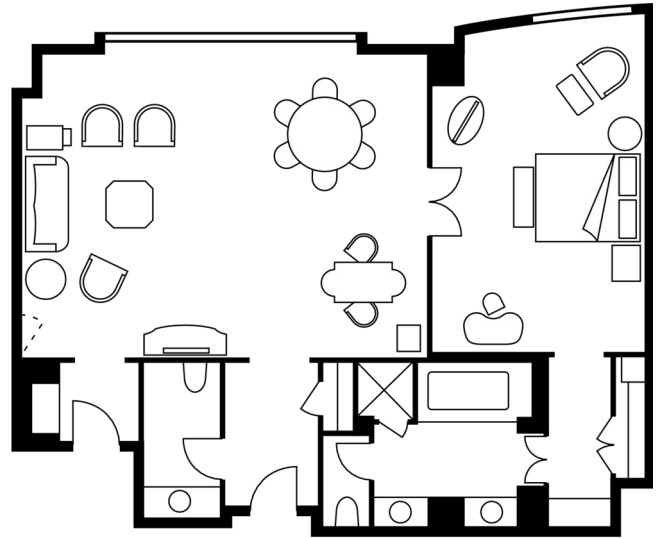
Number 4
Beds King bed
Size 1,200 sq ft
111 m²

Location

3rd to 6th floor

View

Boston Public Garden



STATE SUITE

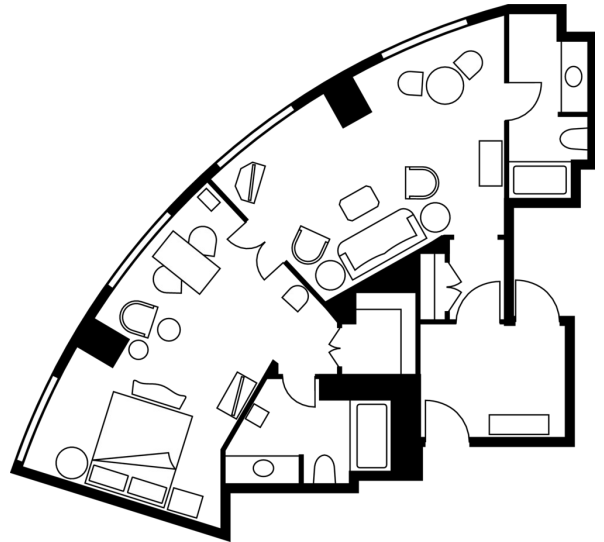
Number 6
Beds King bed
Size 900 sq ft
84 m²

Location

Throughout the Hotel

View

Boston Common and the State House



SENATOR SUITE

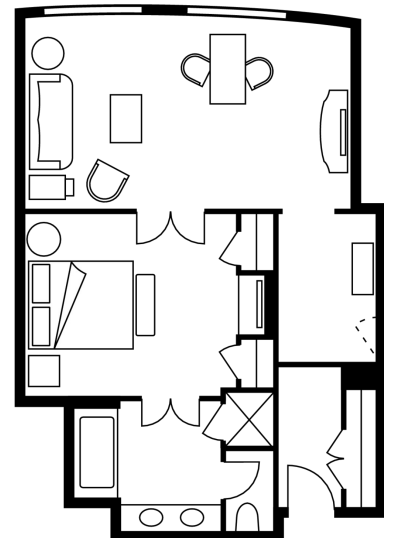
Number 2
Beds King bed
Size 825 sq ft
77 m²

Location

Throughout the Hotel

View

Boston Public Garden



AMENITIES

- All news cable network
- CD player
- Complimentary local newspaper
- Down pillows
- DVD player
- Fax machine on request
- Hair dryer
- Hypo-allergenic pillows on request
- In-room safe
- Make-up mirror
- Multi-line telephone(s) with voicemail
- Refrigerated private bar
- Slippers
- Thick terry bathrobes
- Twice-daily housekeeping service
- Wired or wireless Internet access

GUEST SERVICES

- 24-hour In-Room Dining
- 24-hour laundry/dry-cleaning/pressing
- 24-hour multilingual Concierge
- Airport transfers
- Complimentary overnight shoeshine
- Doctor or nurse on call 24 hours
- Non-smoking rooms
- One-hour pressing
- Safety deposit boxes
- Self-parking
- Services and amenities for younger guests
- Umbrellas
- Valet parking

VIP GIFTS AND WELCOME AMENITY

Special arrangements can be made for clients to purchase welcome amenities for their VIP guests.

DINING HOURS OF OPERATION

The Bristol Lounge

Food service

Sunday 7:00 am - 10:30 pm

Monday to Thursday 6:30 am - 10:30 pm

Friday 6:30 am - 11:30 pm

Saturday 7:00 am - 11:30 pm

Beverage service

Sunday 11:00 am - midnight

Monday to Saturday 11:00 am - 1:00 am

Bar menu and light bites

Monday to Thursday 11:00 am - 11:30 pm

Friday and Saturday 11:00 am - 12:30 am

Sunday 11:00 am - 11:30 pm

Breakfast buffet

Sunday 9:00 am - 1:30 pm

Afternoon tea

Saturday and Sunday 3:00 pm - 4:15 pm

In-Room Dining

Breakfast

Every day 6:30 am - 11:00 am

All-day dining

Every day 6:30 am - 11:00 pm

Homestyle menu

Every day 11:00 am - 11:00 pm

Hospitality menu

Every day 11:00 am - 10:30 pm

Late-night dining

Every day 11:00 pm - 6:30 am

Children's menu

Every day 6:30 am - 10:30 pm

DINING

The award-winning cuisine at Four Seasons Hotel Boston has earned a stellar reputation both locally and nationally. The popular Bristol Lounge is known as Boston's best power-dining restaurant during breakfast and lunch, and transitions into a lively bar and dinner scene later in the day. Serving comfort-driven American cuisine from farm to table, the menu features fresh New England seafood, dry-aged steaks, housemade pastas and the famous Bristol Burger. Banquets and special events offer flawless service and creative menus that are custom-designed to meet individual tastes and needs.

RESTAURANTS

The Bristol Lounge

Heralded as "Boston's living room," the Bristol Lounge provides a comfortable setting for dining and conversation any time of day. Tables offering views of Boston Public Garden line the floor-to-ceiling windows, and a fireplace warms the spacious room during the winter.

- Indoor seating: 165, plus 50 for cocktails

RECREATION FACILITIES

A resort-like escape in the city, Four Seasons features elegant recreational amenities ranging from a 24-hour Health Club to a swimming pool with floor-to-ceiling windows overlooking the Public Garden.

SPA SERVICES

Enjoy a selection of luxury massage therapies in our private treatment room or in the privacy of your guest room. Special treatments, including our signature face-firming massage, therapeutic body treatments and hot stone massage, are perfect remedies after a long day. To enhance relaxation, the men's and women's locker facilities each offer a dry sauna and a steam room.

FITNESS FACILITIES

Keep up with your regular fitness routine – or try something new in five-star style – in the Fitness Centre at Four Seasons Hotel Boston. Our cutting-edge cardio and weight-training equipment – as well as our 44-foot (13-metre) heated indoor pool – are great for training, while the whirlpool, steam rooms and saunas offer ideal ways to unwind.

- Size: 7,000 sq ft / 650 m²

POOL

Indoor Pool

Five-star Four Seasons Hotel Boston's indoor pool and whirlpool overlook the Boston Public Garden, Beacon Hill and the State House from floor-to-ceiling windows, offering a great place to relax during your vacation or weekend getaway.

Within easy reach of your Four Seasons Hotel Boston guest room or luxury suite are countless ways to explore the best of New England. From beautiful hikes and premier golf courses to picturesque seaside towns, options abound for your active enjoyment. For ideas and details, our 24-hour Concierge is always pleased to advise and assist you.

GOLF

Newton Commonwealth Golf Course

Located just minutes from downtown Boston in suburban Newton, Massachusetts, the 18-hole public course offers a short but challenging round of golf that features quick greens and relatively narrow fairways. As many big hitters have discovered, course management is essential, with water and sand bunkers appearing frequently.

Redesigned in 1920 by the renowned architect, Donald Ross, the club marked its centennial anniversary in 1997.

Shaker Hills Golf Club

Conveniently located in the beautiful New England town of Harvard, Massachusetts, Shaker Hills Golf Club is the perfect choice for your golf outing. It has a multiple tee system that is designed to provide a challenge for golfers of all levels of ability as well as the utmost in golfing enjoyment. Bent grass tees, fairways, greens, valet bag service and a fully stocked pro shop contribute to its private club atmosphere. In 1993, due to its championship layout, Golf Digest ranked Shaker Hills Golf Club as the best public golf course in Massachusetts.

Stow Acres Country Club

This course offers the best in public golf and the ultimate guest experience. Stow Acres Country Club has two courses, each with its own unique setting. Since 1997, GSO Magazine has recognised our pro shop as one of the top 100 golf shops. Planned events are available for groups of various sizes: ranging from 20 to 288 players.

Granite Links Golf Club

Voted one of the country's top ten best new upscale golf courses by *Golf Digest*, Granite Links Golf Club is a private club that provides a limited level of public access and is conveniently located just 10 miles (16 kilometres) from the Hotel. Twenty-seven challenging holes of links-style golf offer scenic vistas including breathtaking views of Boston's skyline to the north, the Harbor Islands to the south and east and the densely forested backdrop of the Blue Hills Reservation to the west.

OFF-SITE RECREATION

Off-site recreation is readily available through the Concierge:

- Jogging map of suggested scenic routes
- Squash

Rooms	Dimensions		Size		Height		Classroom	Hollow square	U-shape	Theatre	Reception	Banquet rounds	Conference/boardroom
	(ft)	(m)	(sq ft)	(m2)	(ft)	(m)							
- Ballroom	70 x 53	21.3 x 16.2	3,710	344	13.7	4.2	216	103	75	450	500	336	-
- Ballroom Salon A	34 x 53	10.4 x 16.1	1,802	167	13.7	4.2	105	60	48	220	250	108	39
- Ballroom Salon B	34 x 53	10.4 x 16.1	1,802	167	13.7	4.2	105	60	48	220	250	108	39
- Foyer	65 x 25	19.8 x 7.6	1,625	151	13.4	4.1	-	-	-	150	200	132	30
- Phillips Room	27 x 27	8.2 x 8.2	729	68	11.5	3.5	48	36	27	60	60	48	22
- Stuart Room	27 x 27	8.2 x 8.2	729	68	11.5	3.5	48	36	27	60	60	48	22
- Winthrop Room	25 x 26	7.6 x 7.9	650	60	12	3.7	33	24	25	60	55	36	18
- Leverett Room	25 x 26	7.6 x 7.9	650	60	12	3.7	33	24	18	60	55	36	18
- Endicott Room	25 x 26	7.6 x 7.9	650	60	12	3.7	33	24	18	60	55	36	18
- Bradstreet Room	26 x 27	7.9 x 8.2	689	64	12	3.7	33	24	18	60	55	36	18
- Governor's Room	42 x 62	12.8 x 18.9	2,604	242	13	4	108	54	45	250	225	144	36
- Boardroom	31 x 22	9.4 x 6.7	682	63	12	3.7	-	-	-	-	-	-	16
- Blaxton Room	24 x 25	7 x 8	600	56	9.8	3	36	24	18	40	50	36	18
- Blaxton Foyer	16 x 19	5 x 6	304	30	10	3	-	-	-	-	-	-	-
- Aujourd'hui Event Space	-	-	4,332	402	-	-	-	-	-	-	264	-	-
- Bulfinch Room	22 x 20	6.7 x 6.1	440	41	8.5	2.6	18	22	18	40	40	36	12
- Benjamin Room	24 x 24	7.3 x 7.3	576	54	8.5	2.6	18	22	18	40	40	36	12
- Parris Room	25 x 25	7.6 x 7.6	625	58	7.7	2.3	30	24	20	48	40	48	16
- Shaw Room	25 x 18	7.6 x 5.5	450	42	8.5	2.6	18	22	14	48	40	48	12