



## Quick Reference Guide

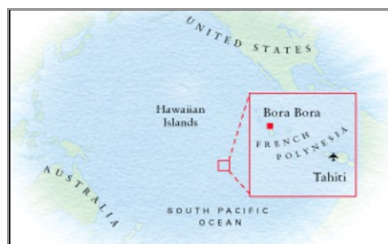
---

Last updated May 3, 2012 | For additional information please contact the resort directly

---

Four Seasons Resort Bora Bora  
Motu Tehotu - BP 547, Bora Bora, 98730, French Polynesia  
Tel 689.603.130 | Res 689.603.170

[www.fourseasons.com/borabora](http://www.fourseasons.com/borabora)



Motu Tehotu - BP 547  
Bora Bora 98730, French Polynesia  
Tel 689.603.130  
Res 689.603.170

#### AIRPORT

- Faa'a International Airport (PPT):  
Papeete to Bora Bora – 45 minutes by plane  
Bora Bora airport to Resort – 15 minutes by boat (Papeete to Bora Bora – 280 kilometres (174 miles)/)

#### TABLE OF CONTENTS

- 2 Introduction
- 4 Destination
- 6 Conference Facilities
- 10 Guest rooms, Suites and Private Residences
- 15 Dining
- 16 Recreational Facilities
- 17 Incentive Activities
- 20 Site Plan
- 21 Appendix: Conference Chart

On the island of Bora Bora – with its primeval peaks, multihued blue lagoon and necklace of white-fringed (coral islets) – the spirit of French Polynesia meets ultramodern pampering as Four Seasons redefines the South Seas.



Situated between the deep blue Pacific and the multihued waters of a tranquil lagoon, Four Seasons Resort Bora Bora offers South Seas escape on its own sublimely private *motu* (a small islet). Inspired by Polynesian architecture, the village-like Resort blends into a lush world of unsurpassed tropical beauty and takes full advantage of every heart-stopping view – from dazzling white beaches to the soaring peaks of Mount Otemanu and Mount Pahia, from the soft light of dawn to brilliant sunsets and star-filled nights.

Immerse yourself in Four Seasons comforts and the mystique of Bora Bora within 121 private hideaways: 100 thatched over-water bungalows and seven beachfront villas with pools. Embrace culinary art and operatic sunsets at the edge of the water in four restaurants and bars. Spirit yourself away in a spa by the rolling Pacific surf. Kite-surf across the impossibly blue lagoon. Relax beside the dazzling outdoor pool. The fitness centre, a separate island for teens, Kids For All Seasons with its own pool, and a wide range of recreational activities add up to an experience without equal in the South Seas.

For inspiring meetings and social gatherings, the Resort offers intimate yet versatile function space. The ultimate in luxurious seclusion, Four Seasons combines thoughtful service and impeccably modern amenities with one of the world's most exotic locations.

#### TRANSPORTATION

Guests will first fly to Papeete, Tahiti (airport code PPT), and then continue on to Bora Bora (airport code BOB) via Air Tahiti. There are many international non-stop flights to Papeete, and carriers include Air Tahiti Nui and Air France.

Learn more about Air Tahiti Nui's 2012 promotions.

Flight times from international hubs to Papeete:

- Los Angeles – 8 hours 35 minutes  
(from Paris to Los Angeles – 12 hours 20 minutes)
- Tokyo – 11 hours 10 minutes
- Auckland – 5 hours 5 minutes
- Honolulu – 5 hours

Upon arrival in Papeete, all passengers and private aircraft clear customs before continuing to Bora Bora. Guests will then take a 45-minute connecting flight via Air Tahiti, which offers five or six inter-island flights each day from Papeete to Bora Bora Airport.

Note: For entry into French Polynesia, all guests are required to have a valid passport and an outbound ticket. As entry requirements and customs regulations are subject to change without notice, please consult the appropriate authorities before travelling internationally.

#### Services provided by the Resort

Twice daily from Monday to Saturday, Four Seasons Resort Bora Bora provides return boat shuttle service on a fixed schedule to Vaitape Harbour on the main island of Bora Bora. The morning boat shuttle is complimentary, while a fee applies for the dinnertime shuttle. Please contact the Resort for additional information.

---

---

#### WEATHER CHART

Month	°C		°F	
	Highs/Lows	Highs/Lows	Highs/Lows	Highs/Lows
January	30	/ 23	86	/ 73
February	30	/ 24	86	/ 75
March	31	/ 24	88	/ 75
April	31	/ 23	88	/ 73
May	30	/ 22	86	/ 72
June	29	/ 21	84	/ 70
July	28	/ 21	82	/ 70
August	28	/ 20	82	/ 68
September	29	/ 21	84	/ 70
October	29	/ 22	84	/ 72
November	30	/ 23	86	/ 73
December	30	/ 23	86	/ 73

#### DESTINATION

The most famous of French Polynesia's Leeward Islands, Bora Bora is the quintessential tropical paradise. Volcanic in origin, it is surrounded by sand-fringed *motus* (small islets) on an outer coral reef that encloses a turquoise lagoon. With only one navigable pass, the crystal-clear lagoon is calm, warm and relatively shallow. At 727 metres (2,385 feet), Mount Otemanu towers over the main island. Next to it, the more rounded Mount Pahia stands at 658 metres (2,159 feet).

Settled by Polynesians around AD 900, French Polynesia was discovered by Europeans in the 16th century. For centuries, the French and English vied for the possession of Tahiti and its archipelago. A French colony since 1884, Bora Bora became an overseas territory in 1946. Its unequalled beauty has drawn artists and writers – perhaps most famously, author James A. Michener declared it the most beautiful island in the world. Today, most of Bora Bora's 4,650 inhabitants live on a thin, flat coastal strip, many around the small port of Vaitape.

On a private *motu*, Four Seasons Resort Bora Bora offers a South Seas escape in a lush world of unsurpassed tropical beauty.

#### WEATHER

Bora Bora's mild tropical weather is cooled by sea breezes, with minimal fluctuations between daytime and night-time temperatures. This South Sea paradise has two main seasons – November to March, when it is warm with intermittent showers, and April to October, when it is drier and cooler.

#### LOCAL ATTRACTIONS AND ACTIVITIES

At Four Seasons, you enjoy a unique vantage point from which to explore the sights, sounds and experiences around you. We hope the highlights of local attractions below help simplify your planning. Please let us know how else we can assist you.

##### *Within a 30-minute walk of the Resort*

##### Black pearls of Tahiti:

- The black pearls of Tahiti are indigenous to the remote lagoons of French Polynesia in the South Pacific, and have become an exotic gem sought after by celebrities and pearl aficionados alike. Many outlets on Bora Bora sell Tahitian cultured pearls, including a black pearl boutique at the Resort.

##### *Within a 30-minute boat ride of the Resort*

##### Mount Otemanu and Mount Pahia:

- Dominating the island are majestic Mount Otemanu and Mount Pahia, two towering volcanic peaks of black rock that jut out of the centre of the emerald-green island. Adding to their mystique are the white clouds that frequently swirl around their high peaks.

##### Polynesian *marae* (stone temples):

- Explorations of Bora Bora's archaeological sites focus on several ancient Polynesian stone temples, known as *marae*, which are dotted along Bora Bora's coastline. Three outstanding temples are Aehautai Marae, Taharuu Marae and Marotetini Marae.

Cannons from World War II:

- During World War II, Bora Bora was the base for Operation Bobcat, a US initiative that transformed the island into an American stronghold. Chosen for Bora Bora's pivotal location in the Pacific, the operation maintained a supply force of nine ships, 20,000 tons of equipment and nearly 5,000 men. Seven massive naval cannons were set up at strategic points around the island to protect it against any possible military takeover. Today, some of the cannons are easily accessible; others can only be located with the help of guides.

Point Matira:

- Point Matira is considered to have one of the best beaches in French Polynesia, stretching more than 3 kilometres (2 miles) around the flat, coconut-studded peninsula.

---

CONFERENCE FACILITIES OVERVIEW

Total Space	294 m <sup>2</sup> 3,162 sq.ft.
Largest Ballroom	114 m <sup>2</sup> 1,226 sq.ft.
Meet and Feed (max. capacity)	-
Breakouts	-
Banquet (max. capacity)	90
Outdoor Banquet (max. capacity)	215
Private Dining (max. capacity)	220

CONFERENCE FACILITIES

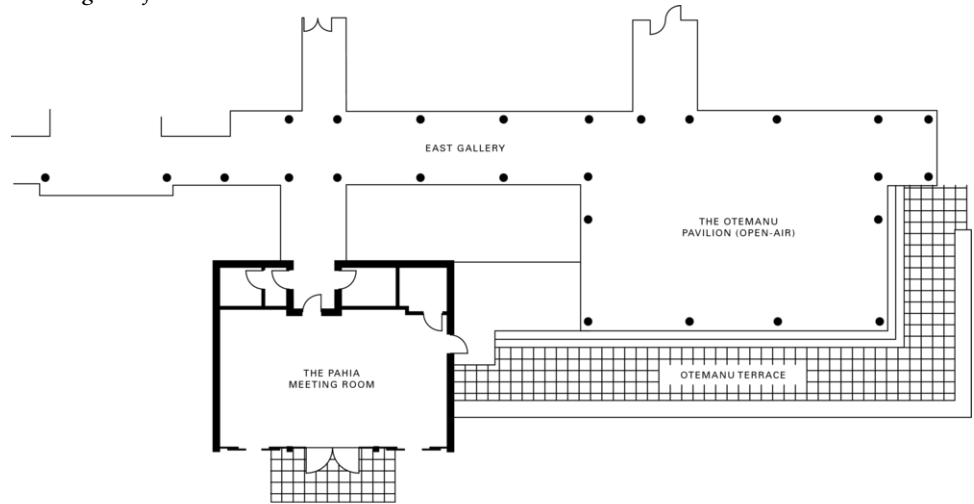
Four Seasons Resort Bora Bora transforms one of the world's most exotic destinations into a venue unsurpassed for sophisticated weddings, special occasions and incentive group events – from an intimate ceremony to an exclusive reception for up to 100.

The Resort's dedicated function area flows flexibly from space to space. It includes the 70-square-metre (753-square-foot) air-conditioned multi-purpose event room, which is equipped with the latest in technology. Ideal for coffee breaks, lunches and cocktail receptions, the adjoining 172-square-metre (1,851-square-foot) covered open-air pavilion offers delightful views of the Resort's inner lagoons and beautifully landscaped gardens.

Outdoor terraces totalling 306 square metres (3,293 square feet), a secluded wedding chapel and the beach all lend themselves to a variety of exclusive gatherings. Experienced Four Seasons support is on site to respond promptly to your needs and to bring all the details together to ensure a memorably satisfying event.

---

Meeting and function rooms



---

TECHNICAL ASSISTANCE

All function spaces at the Resort are fully equipped to support the most demanding presentation and communication requirements, with advanced lighting, and audiovisual capabilities. Telecommunications and electrical hook-ups are designed to meet or exceed industry standards. Voltage is 220 volts.

MUSIC AND ENTERTAINMENT

Our team of conference and banqueting specialists will be happy to arrange music, entertainment and creative outdoor events to complement any part of your event or programme.

RECEIVING AND MAINTENANCE

*Receiving*

The Resort features a full-service shipping and receiving office. All packages should be sent to the attention of the Conference Service Manager at the Resort, along with the conference name and date. Limited space is available for the storage of large items. Please time shipping to the date of arrival.

*Oversized packages or environmentally sensitive equipment*

Please communicate with the Receiving Department or your Sales Manager for special arrangements regarding the delivery of oversized packages or environmentally sensitive equipment. Strict quarantine regulations are enforced in Tahiti and Bora Bora, and shipping any animal or agricultural products is prohibited.

*Maintenance*

The Engineering Department is available 24 hours a day for general assistance with lighting, room temperature control and minor repairs.

DESTINATION MANAGEMENT

Our team can help to accommodate your group's special requests through the Resort's on-site services.

BUSINESS SERVICES

Around the clock, Four Seasons can assist you with arrangements through our resourceful, multilingual Concierge.

- 24-hour business services
- Airline reservation service
- Audiovisual equipment
- Business equipment
- Cellular telephones
- Currency exchange service
- Japanese translation and interpretation service
- Secretarial service
- Wired or wireless Internet access
- Worldwide courier service

SPOUSE PROGRAMMES

The Resort offers a variety of activities of interest to spouses of meeting participants. The Concierge will provide detailed information on specially tailored spouse programmes.

*On-site*

- A day at the Spa
- Classes on Polynesian cooking with a Four Seasons chef
- Private yoga classes
- Lessons in making hand-painted *pareos* (Tahitian sarongs)
- Demonstrations of basket-weaving or wood-carving
- Black pearl jewellery classes

*Off-site*

- A tour of local artists' galleries
- Jeep tours of Bora Bora's mountainous interior
- Mount Otemanu island tour, including shopping for Tahiti's legendary black pearls
- A catamaran cruise, with snorkelling in the lagoon and a picnic lunch on a *motu*
- Visit to the Lagoonarium – and snorkel with the sharks

CHILDRENS AND FAMILY PROGRAMMES

Four Seasons Resort Bora Bora is an idyllic base for families and extends an especially

warm welcome to its young guests, from offering a welcome amenity such as a soft toy on arrival to providing colouring books and crayons, board games, jigsaw puzzles and books. Complimentary items include bottles, high chairs, child-sized bathrobes and slipper, strollers and bottle warmers.

Babysitting services may be arranged through the Concierge. Children's menus, which incorporate many favourite dishes, are available in the restaurants and through In-Suite Dining.

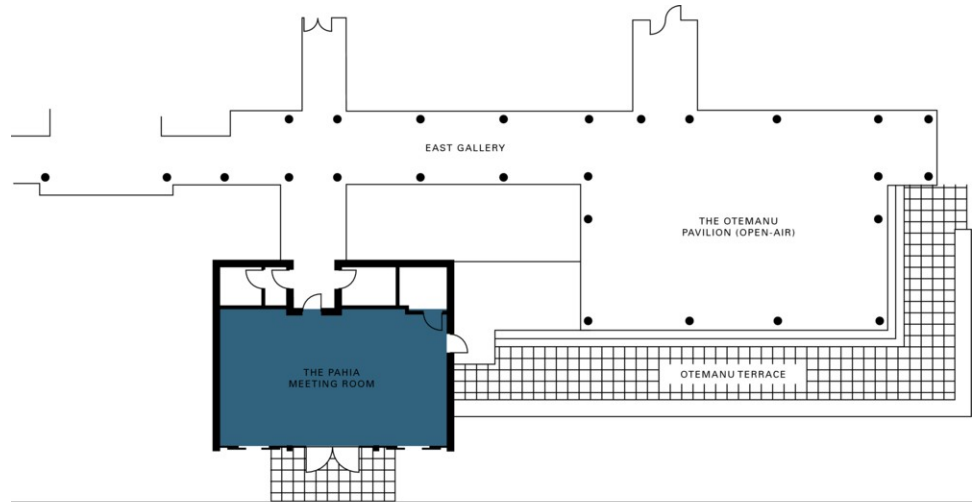
In addition, the Concierge will advise on activities to create special memories for the entire family. Possibilities include a visit to the Lagoonarium.

**PAHIA**

Dimensions	6.4 x 11 m 21 x 36 ft
Size	70 m <sup>2</sup> 753 sq.ft.
Height	2.5 – 4 m 8 – 13 ft

*Capacities*

Classroom	30
Hollow square	30
U Shape	24
Theatre	50
Reception	50
Banquet Rounds	40

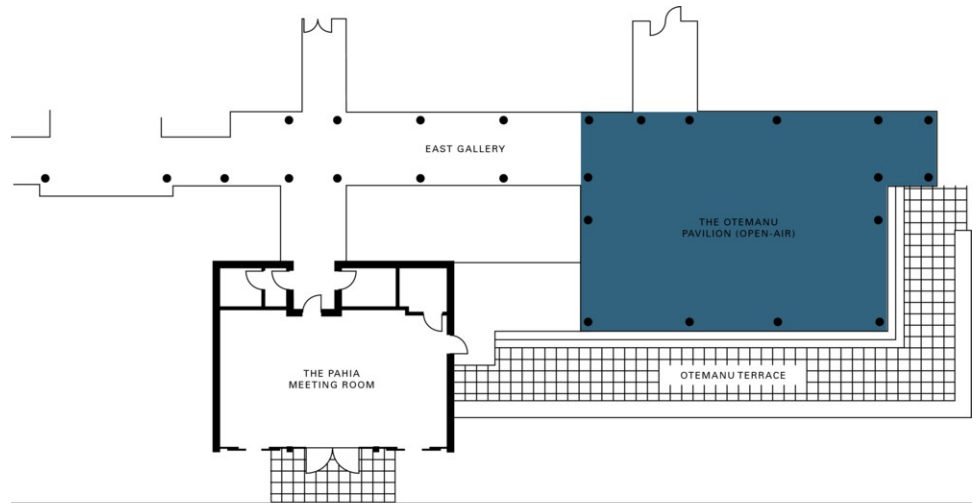


**OTEMANU**

Dimensions	8.8 x 13 m 31 x 43 ft
Size	114 m <sup>2</sup> 1,226 sq.ft.
Height	2.7 – 7.5 m 8.8 – 24.6 ft

*Capacities*

Classroom	70
Hollow square	40
U Shape	40
Theatre	90
Reception	100
Banquet Rounds	90
Boardroom	31



### GUEST ROOMS, SUITES AND PRIVATE RESIDENCES OVERVIEW

The Resort offers 107 spacious hideaways nestling around Bora Bora lagoon and its outer beaches. The 100 over-water bungalows perch on stilts above the turquoise lagoon. On the shore, seven beachfront villas nestle along a stretch of semi-private beach. All overlook the pristine waters and views of spectacular Mount Otemanu.

Guest accommodations offer a restful, airy ambience inspired by local architecture – with traditional teak wood furnishings, high ceilings and roofs thatched with pandanus leaves. To accentuate the feel of Polynesia, special touches include striking works of art, private pools and deep bathtubs beside doors that slide open to reveal panoramic fresh-air views of the lagoon.

<i>Room Category</i>	<i>#</i>	<i>Beds</i>	<i>Size (m<sup>2</sup>)</i>	<i>View (sq ft)</i>	<i>View</i>
- Otemanu Over-Water Bungalow with Plunge Pool	4	1 King	147	1,576	The lagoon and Mount Otemanu
- Over-Water Bungalow with Plunge Pool	4	1 King	104	1,120	Unobstructed views of the lagoon
- Mountain-View Over-Water Bungalow	38	1 King or 2 queen	100	1,080	Mount Otemanu
- Lagoon-View Over-Water Bungalow	26	1 King or 2 queen	100	1,080	The lagoon
- Beach-View Over-Water Bungalow	20	1 King or 2 queen	100	1,080	The beach
- Resort-View Over-Water Bungalow	8	1 King	100	1,080	The Resort
- Three-Bedroom Otemanu Luxury Beachfront Villa with Private Pool	1	2 King and 2 queen	500	5,380	Beach, lagoon and Mount Otemanu
- Moana Beach Villa	4	1 King and 2 queen	300	3,228	Lagoon and Mount Otemanu
- Fenua Beach Villa	2	1 King and 2 queen	300	3,228	Garden and lagoon

#### *Guest Room Overview*

The luxurious over-water bungalows begin at a generous 1,080 square feet (100 square metres), with a choice of three impressive vistas – resort, beach, mountain or lagoon. For additional space and amenities, choose the Lagoon-View Over-Water Bungalows with Plunge Pool or the Otemanu Over-Water Bungalows with Plunge Pool, which also offer nearly 50% more space than our standard bungalows.

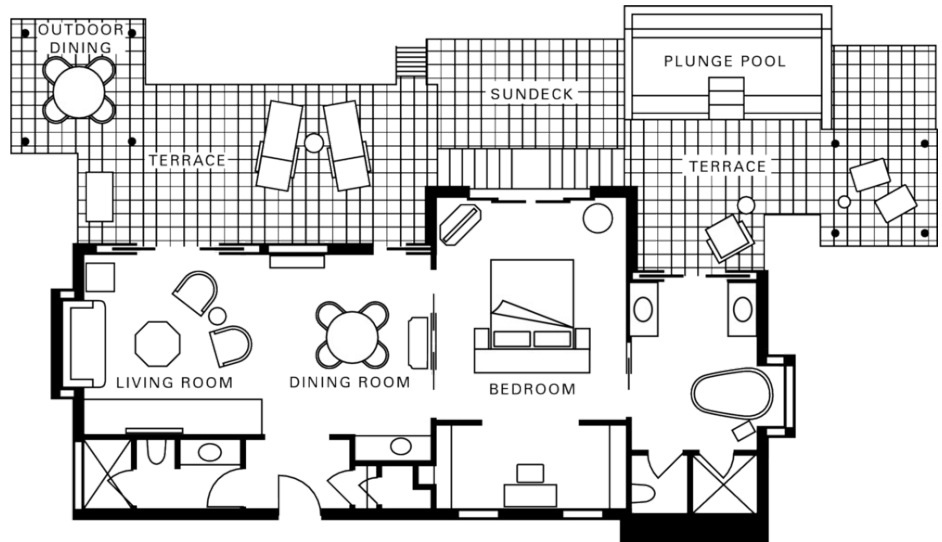
#### *Suites Overview*

Six Two-Bedroom Beachfront Villas offer three times more space for luxurious living, a private pool as well as step-out access to the semi-private beach. Our presidential-scale beachfront quarters, the Otemanu Luxury Beachfront Villa, offers three bedrooms and a private pool.

OTEMANU OVER-WATER BUNGALOW  
WITH PLUNGE POOL

Number 4  
Beds King bed  
Size 147 m<sup>2</sup>  
1,576 sq ft

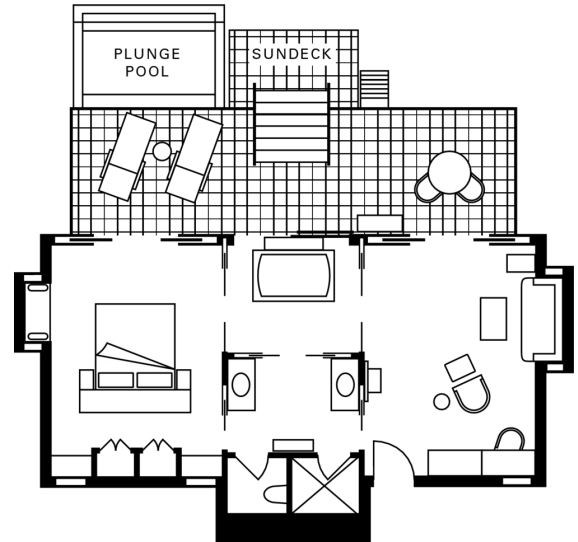
Location  
Over-water bungalow  
View  
The lagoon and Mount Otemanu



OVER-WATER BUNGALOW WITH  
PLUNGE POOL

Number 4  
Beds King bed  
Size 104 m<sup>2</sup>  
1,120 sq ft

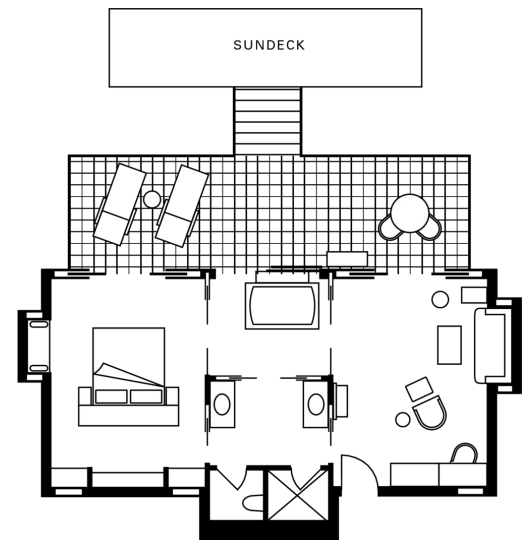
Location  
Over-water bungalow  
View  
Unobstructed views of the lagoon



MOUNTAIN-VIEW OVER-WATER  
BUNGALOW

Number 38  
Beds King or two queen beds  
Size 100 m<sup>2</sup>  
1,080 sq ft

Location  
Over-water bungalows  
View  
Mount Otemanu



LAGOON-VIEW OVER-WATER  
BUNGALOW

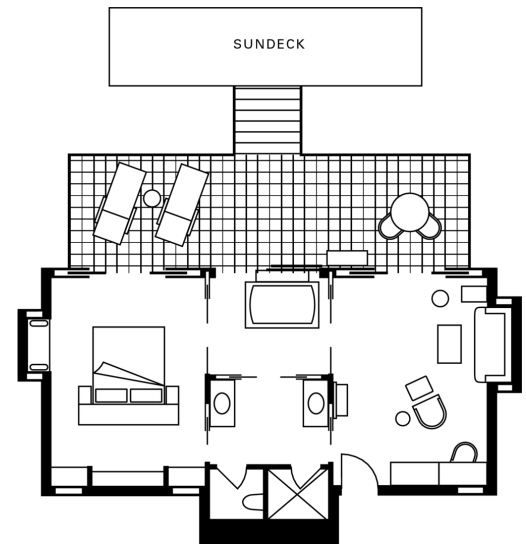
Number 26  
Beds King or two queen beds  
Size 100 m<sup>2</sup>  
1,080 sq ft

*Location*

In the lagoon, over water

*View*

The lagoon



BEACH-VIEW OVER-WATER  
BUNGALOW

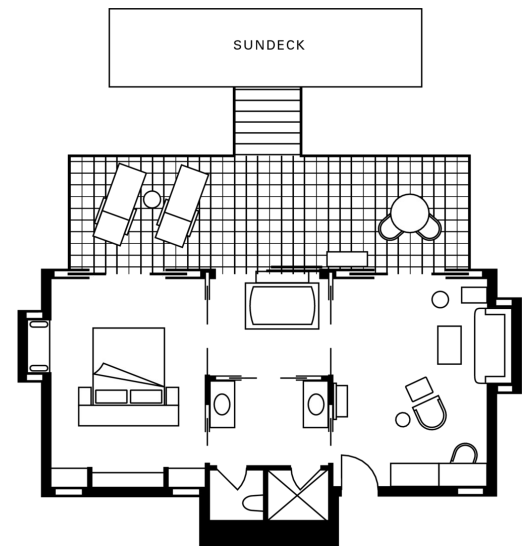
Number 20  
Beds King or two queen beds  
Size 100 m<sup>2</sup>  
1,080 sq ft

*Location*

Over-water bungalow

*View*

The beach



RESORT-VIEW OVER-WATER  
BUNGALOW

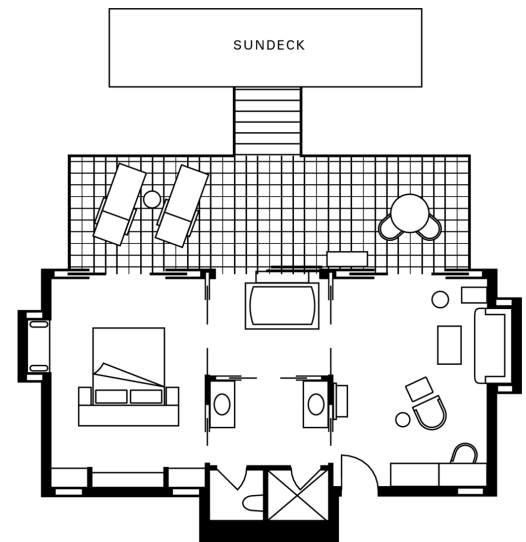
Number 8  
Beds King  
Size 100 m<sup>2</sup>  
1,080 sq ft

*Location*

Over-water bungalow

*View*

The Resort



THREE-BEDROOM OTEMANU LUXURY  
BEACHFRONT VILLA WITH PRIVATE  
POOL

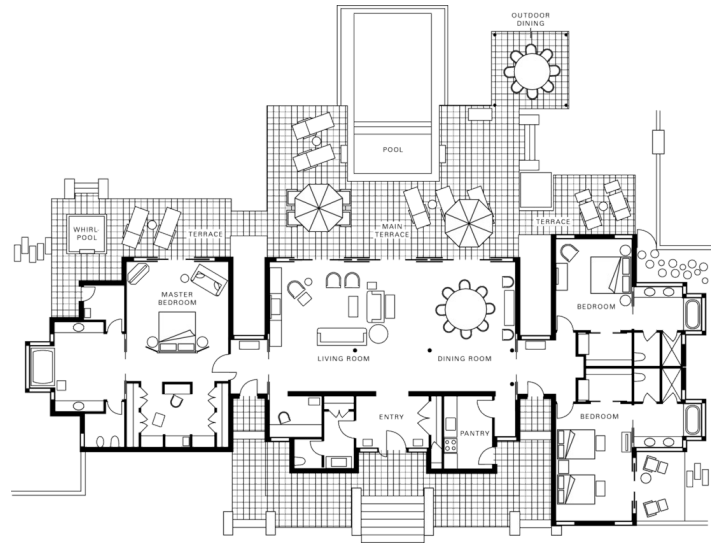
Number 1  
Beds Two king and two queen  
beds  
Size 500 m<sup>2</sup>  
5,380 sq ft

Location

Beachfront, with pedestrian access to  
the main building

View

Beach, lagoon and Mount Otemanu



MOANA BEACH VILLA

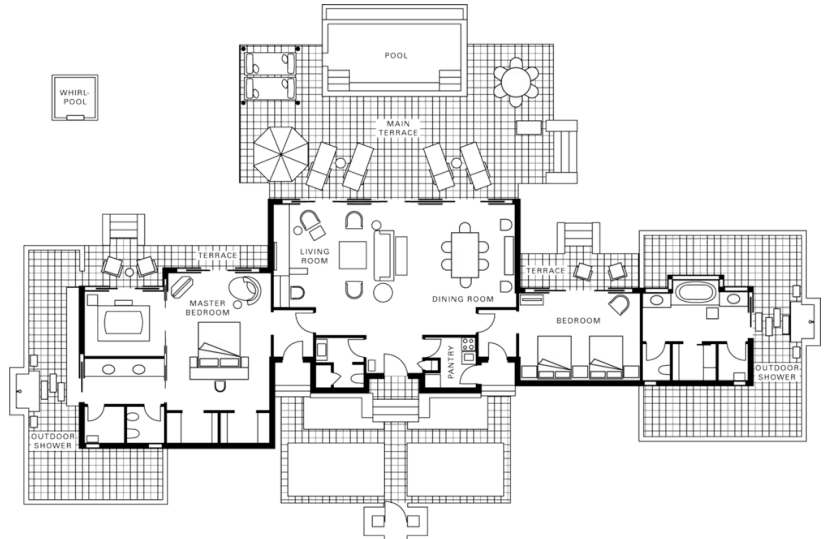
Number 4  
Beds One king and two queen  
beds  
Size 300 m<sup>2</sup>  
3,228 sq ft

Location

Beachfront, with pedestrian access to  
the main building

View

Lagoon and Mount Otemanu



FENUA BEACH VILLA

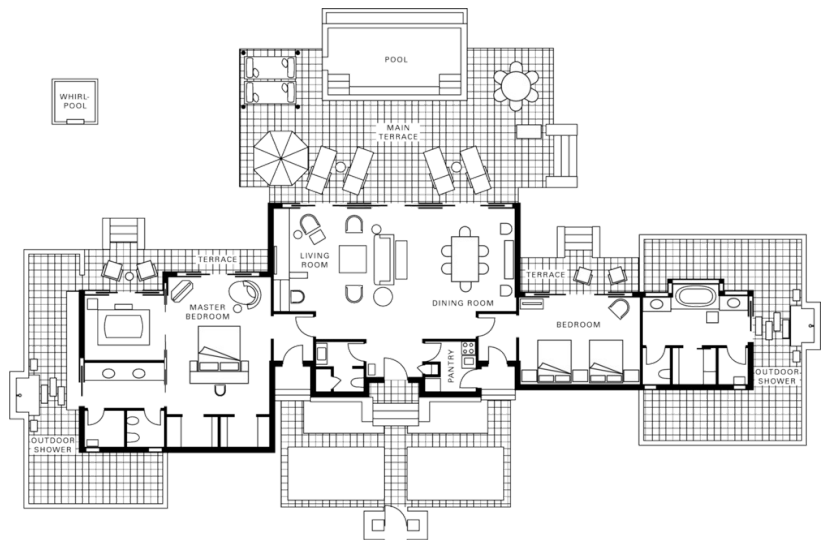
Number 2  
Beds One king and two queen  
beds  
Size 300 m<sup>2</sup>  
3,228 sq ft

Location

Beachfront, with pedestrian access to  
the main building

View

Garden and lagoon



#### AMENITIES

- CD player
- Cotton bathrobes
- Down pillows
- DVD player
- Hair dryer
- Hypo-allergenic pillows on request
- In-room safe
- Iron and ironing board
- Multi-line telephone(s) with voicemail
- Refrigerated private bar
- Satellite television
- Tea/coffee maker
- Twice-daily housekeeping service
- Wired or wireless Internet access

#### GUEST SERVICES

- 24-hour In-Room Dining
- 24-hour multilingual Concierge
- Babysitting service
- CD/DVD library
- Complimentary overnight shoeshine
- Doctor or nurse on call 24 hours
- Gift shop
- International newspapers
- Non-smoking rooms
- One-hour pressing
- Same-day laundry/dry-cleaning/pressing
- Services and amenities for younger guests
- Umbrellas

#### VIP GIFTS AND WELCOME AMENITY

Special arrangements can be made for clients to purchase welcome amenities for their VIP guests. We will be happy to assist in these arrangements. Possibilities range from legendary Tahitian black pearls to handcrafted wood by local artisans and handpainted pareos (a Tahitian sarong).

---

---

## DINING HOURS OF OPERATION

---

### *Arii Moana*

Every day 6:30 pm - 9:30 pm

---

### *Tere Nui*

Breakfast 6:30 am - 11:00 am

Lunch 11:00 am - 5:00 pm

Dinner 6:30 pm - 9:30 pm

---

### *Faré Hoa Beach Bar*

Every day 10:00 am - 5:00 pm

---

### *Sunset Restaurant and Bar*

Every day 4:00 pm - 11:00 pm

---

### *In-Room Dining*

Breakfast 6:00 am - 11:30 am

All-day dining 11:30 am - 10:30 pm

Overnight 10:30 pm - 6:00 am

---

## DINING

Inspired by its exquisite Polynesian setting, Four Seasons Resort Bora Bora serves exceptional South Pacific delicacies. Four restaurants and bars each take full advantage of the Resort's position on this romantic island, as well as Bora Bora's sunshine, stunning sunsets and starlit nights. Innovative menus prepared to extraordinarily high standards feature locally raised fruit, vegetables and spices and a rich diversity of freshly caught seafood. Four Seasons flair comes through equally in innovative creations for banquets and events. For a special evening for two, choose to dine either on the ocean-side terrace of your private bungalow or on our beautiful white sand beach, graced by impeccable Four Seasons service.

## RESTAURANTS

### *Arii Moana*

Overlooking the tranquil, translucent waters of the lagoon, Arii Moana epitomises romance, offering marvellous views – as far as distant Mount Otemanu – and culinary perfection. The imaginative menu creations highlight the combination of Polynesian and French cuisine, accompanied by the finest wines.

- Indoor seating: 56
- Outdoor seating: 40

### *Tere Nui*

Adjacent to the beach, Tere Nui is an open-air, thatched-roof all-day restaurant nestled within its tropical surroundings. Sea breezes and plantation-style ceiling fans add to the airy ambience.

Diners enjoy spectacular vistas of the lagoon and Mount Otemanu. Tere Nui's breakfast buffet includes fresh fruit from around the world, fresh baked goods, an omelette station and other traditional favourites.

Weekly themed dinners with enticing food stations include Mediterranean Night, which features a made-to-order pasta bar, and BBQ Night.

- Indoor seating: 80
- Outdoor seating: 50

### *Faré Hoa Beach Bar*

With its relaxing beachside setting adjacent to the main pool, Faré Hoa Beach Bar offers idyllic views of the lagoon and Mount Otemanu. Relaxing in the shade of the thatched roof, guests in the beach and pool areas may enjoy fresh salads, sandwiches, delicious desserts and other light snacks, accompanied by tropical cocktails and refreshing soft drinks.

- Outdoor seating: 30

### *Sunset Restaurant and Bar*

With its inspiring views, Sunset Restaurant and Bar is the perfect place to unwind as the sun sets over the lagoon, its deep orange hues turning slowly into night. Casual indoor lounge seating, over-water terrace seating and an interactive bar area make this an idyllic spot for eclectic dining and social gatherings. Sunset features freshly prepared sushi, Asian-inspired small plates – ideal for sharing – and cocktails with a unique twist.

- Indoor seating: 29
- Outdoor seating: 30

## RECREATION FACILITIES

Enjoy bespoke spa rituals inspired by the natural resources of Bora Bora, from monoi to vanilla. Explore the world's most photographed lagoon with a wealth of water sports. Feel sea breezes as you work out in the open-air gym. Float in the wave-shaped infinity pool – or refresh with a chilled towel as you lounge on the deck. Young guests can have fun in the children's pool or at Kids For All Seasons, while teens enjoy their private beach on Chill Island. And almost anything else is possible with the help of the multilingual Four Seasons Concierge.

## SPA SERVICES

Nestled at the lagoon edge, and surrounded by tropical groves and the pristine Pacific waters, sits The Spa at Four Seasons Resort Bora Bora. With breathtaking ocean views, the haven of our kahaia tree-inspired spa captures the unique balance that defines Bora Bora – surging energy meeting inviting tranquility.

## FITNESS FACILITIES

Work out in the Resort's open-air fitness centre, where you can be cooled by sea breezes and enjoy views of the South Pacific.

The centre's state-of-the-art gymnasium features advanced cardiovascular machines – all equipped with television monitors and headsets – weight machines and free weights, as well as an over-water sunrise yoga platform.

## POOL

### Main pool

Among the soaring palms and tropical foliage near the beach, the infinity edges of the dazzling wave-shaped pool blend seamlessly with the ocean beyond. Relaxing is easy on the surrounding pool deck, which features chaises longues, umbrellas, a changing facility, and Four Seasons attendants on hand to provide ice water and chilled towels. Frozen treats are available in the afternoon. Enjoy poolside food and beverage service at the shaded pool bar.

### Children's splash pad

Close to the beach and restaurants, the children's splash pad in the Kids Club is conveniently located for families with young children to get the most out of their beach experience. This area is supervised when the Kids Club is open.

Within easy reach of your Four Seasons bungalow or villa is an abundance of options for sports and active enjoyment. Bora Bora's deep lagoon is a source of delight to all who experience it – whether they are swimming or snorkelling, windsurfing or waterskiing, parasailing or even circling the entire island by power boat. On our private beach, knowledgeable Four Seasons staff are on hand to assist with ideas for activities or arrange lessons.

## INCENTIVE ACTIVITIES

### Sample itinerary

---

#### Day 1

##### Morning - Arrive at the Resort

Presenting you with chilled towel and tropical beverages, a Four Seasons staff member greets you at the charming Aeroport de Bora Bora and escorts you to the Resort's private *motu* (island) via luxury motor launch. You'll dock at the Resort's arrival pavilion, followed by a brief tour en route to your over-water bungalow.

##### Afternoon

- You might snorkel and explore the kaleidoscope of underwater marine life.
- Or play a game of tennis or beach volleyball.
- Go on a deep-sea fishing excursion, which departs from the Resort's dock.
- Enjoy a relaxing massage or sea-salt scrub at the Spa, overlooking the lagoon.
- Learn about the cultivation and harvest of the prized Tahitian black pearls.

##### Evening

- A Polynesian welcome to Bora Bora with an evening reception and dinner by the inner lagoon. Drums beat as the sun sets behind Mount Otemanu and the traditional fire dance begins.
  - A colourful hand-painted *pareo* (wrap) awaits as a gift on your return to your bungalow.
- 

#### Day 2

##### Morning

- Breakfast at leisure in your over-water bungalow or in Tere Nui, the Resort's all-day-dining restaurant.
- On the Spa's private yoga deck – overlooking the lagoon and Mount Otemanu – balance mind and body with a session of yoga.
- Invigorate with an aqua aerobics class in the lagoon or Resort pool.
- Follow your workout regimen in the fitness centre.
- Power-walk on the Pacific-side beach.

##### Afternoon

- Explore the island's ancient marae temples on a 4x4 Jeep adventure tour.
- Swim with giant sea turtles at Lagoonarium, French Polynesia's largest underwater aquarium.
- Experience the exhilaration of kite- and windsurfing, parasailing or jet-skiing.
- Learn how to tie a *pareo* and create a tiare flower lei from a Polynesian expert.

##### Evening

- Don your *pareos* and tiare leis for a Polynesian-style lobster-bake on

the beach.

- Learn the Polynesian dances of *aparima*, *hivinau* and *ote'a*.
  - Map the intensely starry sky with a telescope.
  - A gift of an underwater camera awaits when you return to your bungalow.
- 

Day 3

Morning

- Breakfast at leisure in your bungalow or in Tere Nui, the Resort's all-day-dining restaurant.
- Meet at the lagoon for an outrigger canoe rowing class.
- Take a dive excursion to view giant manta rays.
- Play a game of tennis or beach volleyball.
- Charter an exclusive deep-sea fishing excursion.

Afternoon

- Learn to hand-paint or dye your own *pareo*.
- Take in the beauty of Mount Pahia and Mount Otemanu on a helicopter tour.
- Be soothed into a Polynesian dream with a pineapple and coconut exfoliating scrub at the Spa.
- Join a snorkelling excursion to feed the gentle reef sharks and bat rays.

Evening

- Dine at leisure in Arii Moana, the Resort's specialty restaurant, followed by live music and drinks under the stars in the Sunset Bar.
  - A beautiful Bora Bora photography book awaits as a gift in your bungalow.
- 

Day 4

Morning

- Breakfast at leisure in your bungalow or in Tere Nui, the Resort's all-day-dining restaurant.
- Enjoy a seaweed wrap in the open-air spa suite.
- Practise aqua aerobics in the lagoon or the Resort pool.
- Power-walk on the beach.
- Work out in the fitness centre.

Afternoon

- Rent a scooter or taxi on the main island to shop for Tahitian pearls or Polynesian art and crafts.
- Take an all-terrain-vehicle tour of the island's World War II outposts.
- Circle the island aboard a motorised outrigger canoe.

Evening

- Enjoy casual cocktails and dinner at the famous Bloody Mary's restaurant on the main island. Sample a taste of the signature Bora Bora vanilla rum cocktail and feast on an array of freshly caught fish and grilled meats. Footwear is optional!
- On the return to your bungalow, Monoi de Tahiti (a Polynesian floral-scented beauty oil) awaits as your gift.

---

Day 5

Morning

- Breakfast at leisure in your suite or in Tere Nui, the Resort's all-day-dining restaurant.
- Work out in the fitness centre.
- Meet at the lagoon for an outrigger canoe rowing class.
- Admire views of the lagoon from your chaise on your private over-water terrace.
- Play a game of tennis or beach volleyball.

Afternoon

- Learn the colourful hand art of *tifai fai*, an appliqué technique similar to quilting.
- Embark on a private *motu* excursion for a day of casual water sports and enjoy a barbecue lunch on a secluded Tahitian island.
- Join a dive excursion to Bora Bora's spectacular outer reef.
- Enjoy a monoi oil and stone massage in the Spa.
- Shop for Tahitian pearls or native crafts in the Resort's boutiques.

Evening

- A blend of Polynesian and French cuisines inspires your farewell reception and dinner. Torches flicker over the festivities as colourfully costumed fire dancers, singers and musicians bid you farewell. And then the beach party begins!
- The gift of a Tahitian pearl gleams when you return to your bungalow.

---

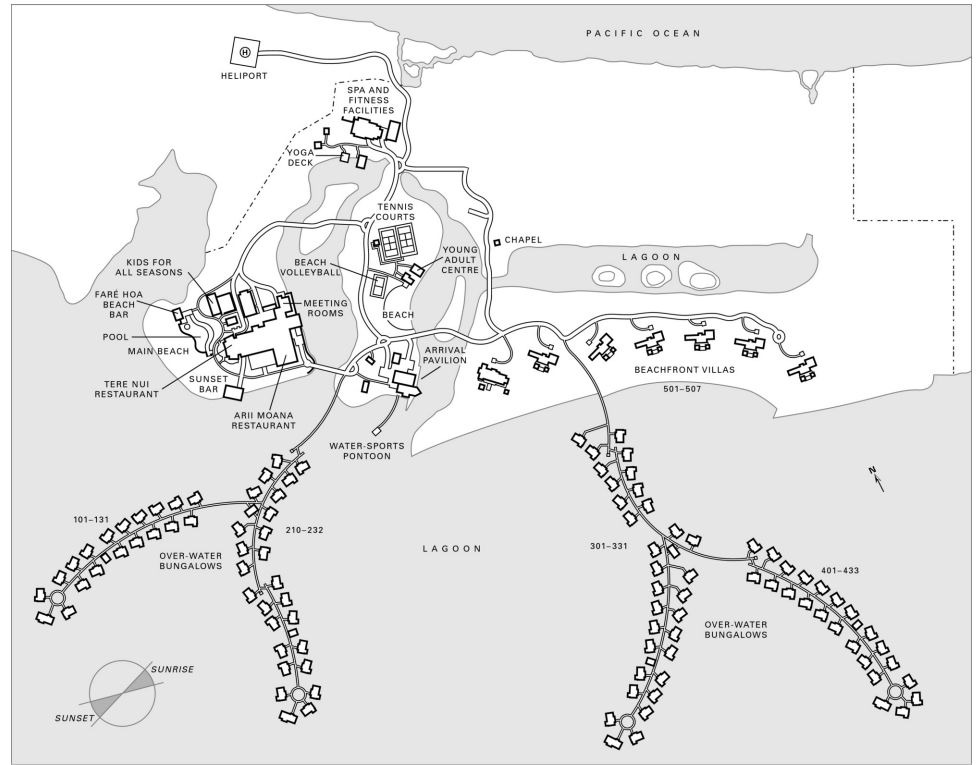
Day 6

Morning - Depart from the Resort

Enjoy breakfast at leisure in your over-water bungalow or in Tere Nui, the Resort's all-day-dining restaurant, then transfer by luxury motor launch to the Aeroport de Bora Bora.

---

SITE PLAN



Rooms	Dimensions		Size		Height		Classroom	Hollow square	U-shape	Theatre	Reception	Banquet rounds	Conference/ boardroom
	(m)	(ft)	(m <sup>2</sup> )	(sq ft)	(m)	(ft)							
- Pahia	6.4 x 11	21 x 36	70	753	2.5 – 4	8 – 13	30	30	24	50	50	40	28
- Otemanu	8.8 x 13	31 x 43	114	1,226	2.7 – 7.5	8.8 – 24.6	70	40	40	90	100	90	31
- Otemanu Beach	-	-	250	2,690	-	-	-	-	-	-	280	220	-