



## Quick Reference Guide

---

Last updated May 3, 2012 | For additional information please contact the hotel directly

---

Four Seasons Hotel Atlanta  
75 Fourteenth Street NE, Atlanta, Georgia, 30309, U.S.A.  
Tel 1.404.881.9898 | Fax 1.404.873.4692 | Res 1.404.253.3853

[www.fourseasons.com/atlanta](http://www.fourseasons.com/atlanta)



75 Fourteenth Street NE  
Atlanta, Georgia 30309, U.S.A.  
Tel 1.404.881.9898  
Fax 1.404.873.4692  
Res 1.404.253.3853

#### AIRPORT

- Hartsfield-Jackson Atlanta International Airport (ATL): 25 minutes (13 miles/21 kilometres)

#### TABLE OF CONTENTS

- 2 *Introduction*
- 4 *Destination*
- 10 *Conference Facilities*
- 18 *Guest rooms, Suites and Private Residences*
- 23 *Dining*
- 24 *Recreational Facilities*
- 26 *Appendix: Conference Chart*

Charming, fashionable and historic, Atlanta's Midtown neighbourhood offers centre-of-it-all allure – within walking distance of business, shopping, parks and the best of the arts. In this lively milieu, Four Seasons Hotel Atlanta presents a chic urban oasis offering genuine Southern warmth and personalised hospitality.



Within a bold neo-classical tower of rose and marble granite – a landmark on the Midtown skyline – Four Seasons provides 244 ultra-spacious guest rooms, including 18 one- and two-bedroom suites.

The lobby atrium offers a glamorous sense of arrival – echoing Georgia's formal traditions with polished marble floors, a sweeping grand staircase, spectacular flowers and a Baccarat crystal chandelier. The atmosphere is relaxed and sophisticated, with a fresh and contemporary feeling.

Local residents and visitors alike enjoy destination dining and see-and-be-seen cocktails at Park 75. Atlanta's only skyline-view ballroom is one of many distinctive event venues, encompassing 15,500 square feet (1,440 square metres) of indoor and outdoor spaces. For relaxation, the Olympic-sized indoor pool, fitness centre and full-service spa create a

resort-style retreat in the city.

#### TRANSPORTATION

Hartsfield-Jackson Atlanta International Airport is 13 miles (21 kilometres) south of Four Seasons Hotel Atlanta (25 minutes). The airport serves all major airlines. Peachtree-Dekalb Airport, which accommodates private aircraft only, is approximately 9 miles (14 kilometres) from the Hotel (20 minutes).

---

---

WEATHER CHART

---

Month	°F		°C	
	Highs/Lows	Highs/Lows	Highs/Lows	Highs/Lows
January	51	/ 33	11	/ 1
February	55	/ 35	13	/ 2
March	63	/ 42	17	/ 6
April	73	/ 50	23	/ 10
May	80	/ 59	27	/ 15
June	86	/ 66	30	/ 19
July	88	/ 69	31	/ 21
August	88	/ 69	31	/ 21
September	82	/ 64	28	/ 18
October	73	/ 51	23	/ 11
November	63	/ 41	17	/ 5
December	54	/ 35	12	/ 2

---

DESTINATION

Known as the capital of the New South, dynamic Atlanta has been Georgia's state capital since 1877. The city is steeped in the history of the Civil War and the civil rights movement. Yet Atlanta is also a vibrant, sophisticated, forward-looking city – a major airline hub, a sports centre and a focal point for US corporate headquarters.

Atlanta's most desirable neighbourhood is Midtown, offering central convenience – five minutes from Downtown and ten minutes from Buckhead. With its own towering business district, Midtown is also a charming neighbourhood of historical residential architecture, high-fashion boutiques and one-of-a-kind restaurants. Here, visitors will find the city's most prominent cultural institutions, including the High Museum of Art, the Alliance Theatre and the Atlanta Symphony Orchestra.

Situated near Georgia Tech, Four Seasons Hotel Atlanta offers convenient access to the university's cultural and athletic events. Atlanta's expansive green spaces include the scenic Piedmont Park – the crown jewel of Atlanta's parks, reminiscent of New York's Central Park – and the famed Botanical Garden. Georgia's legendary sunshine creates a lush landscape of flowers and shade trees.

This is the setting for Four Seasons Hotel Atlanta, the city's only five-star, five-diamond luxury hotel, and minutes from the very best that Georgia's capital has to offer.

WEATHER

Atlanta is home to four distinct seasons. A short, moderate winter quickly gives way to spring blossoms in early March, and soon the city is awash in green. Temperatures in the mid-80s°F (30°C) are the norm in July and August. A comfortable Indian summer brings temperate weather through mid-November.

LOCAL ATTRACTIONS AND ACTIVITIES

At Four Seasons Hotel Atlanta, you enjoy a unique vantage point from which to explore the sights, sounds and experiences around you. We hope the highlights of local attractions below help simplify your planning. Please let us know how else we can assist you.

*Within a 5-minute walk of the Hotel*

Margaret Mitchell House:

- Tour this turn-of-the-century home where Margaret Mitchell wrote *Gone with the Wind*. Exhibits in the house and the adjacent visitors' centre tell the story of Margaret Mitchell's life, her book, the movie and their profound impact on Atlanta, the South and the rest of the world.

HIGH Museum of Art:

- The HIGH's permanent collection includes fine European and American paintings and sculpture, decorative and contemporary arts, photography and African art. Designed by Renzo Piano, the 177,000-square-foot (16,444-square-metre) expansion is the centrepiece of an overall upgrade to the Woodruff Arts Center.

14th Street Playhouse (at Juniper Street):

- A thriving three-theatre complex in the heart of Midtown, hosting some of the region's

most respected theatre companies. The companies that perform here offer a variety of theatrical experiences.

Alliance Theater:

- The South's premiere professional resident theatre and one of the largest and most respected regional theatres in the United States, playing to more than 330,000 patrons each season. The theatre is led by Artistic Director Susan V. Booth.

Woodruff Arts Center:

- The Woodruff Arts Center is home to the Atlanta Symphony Orchestra and the Alliance Theater Company. The HIGH Museum of Art is also part of the complex. This beautiful, all-white building features four floors of galleries connected by innovative curved pedestrian ramps. The museum's collection ranges from medieval works to 19th- and 20th-century American paintings, as well as contemporary folk art and photography. There is a large gift shop and Table 1280 restaurant.

Piedmont Park:

- Atlanta's favourite area to relax or exercise, with 180 acres (73 hectares) in which to stroll, in-line skate, jog or enjoy a game of tennis. The park also offers a great view of the city's skyline and is a delightful location for a picnic.

*Within a 15-minute walk of the Hotel*

Atlanta Botanical Garden:

- Atlanta's famed Botanical Garden occupies 30 acres (12 hectares) of Piedmont Park. It has thousands of native plants, several lush wooded areas and a fun-filled children's garden. The Dorothy Chapman Fuqua Conservatory houses rare and endangered tropical and desert plants. Flower shows take place throughout the year. Also visit the newly opened Orchid Center.

*Within a few minutes drive of the Hotel*

The Fox Theater:

- The Fox Theater is a glamorous example of a classic 1920s movie palace. Its Moorish-Egyptian design is stunning, a fitting contribution to the unique architecture of the neighbourhood. After an extensive, multi-million-dollar renovation, it is now home to the Atlanta Ballet and entertainment events such as Broadway shows and comedy.

Center for Puppetry Arts:

- An introduction to the wonder and art of puppetry. The Center for Puppetry Arts includes puppet shows, a magical museum and make-your-own-puppet workshops.

Museum of Contemporary Art of Georgia:

- The museum's collection features more than 250 works by Georgia artists and includes a variety of contemporary prints, paintings, sculpture, photography and installation pieces.

*Within a 10-minute drive of the Hotel*

Centennial Olympic Park:

- In 1996, Atlanta hosted the Centennial Olympic Games. Centennial Olympic Park, featuring a fountain of five interlocking Olympic rings, was opened to the public in 1998. This park, which has 21 acres (8 hectares) of green space and walkways made of commemorative bricks, is sponsored by people from around the world, and is a delightful venue for festivals, artists' markets and concerts.

CNN Studio Tours:

- Immerse yourself in CNN, on this guided tour offering a dramatic look at the history of CNN News Group Networks. See their coverage of events that shape our world and the state-of-the-art studios responsible for bringing the news to over one billion people around the globe.

Martin Luther King, Jr. Center for Nonviolent Social Change:

- The Martin Luther King, Jr. Center for Nonviolent Social Change records the civil rights movement. This living memorial to an American hero features the largest collection anywhere of civil rights books and archives.

World of Coca-Cola:

- One of the world's most popular soft drinks, Coca-Cola, was created in Atlanta. The company has a fascinating museum in the centre of the city. The World of Coca-Cola includes a thrilling multi-sensory 4-D theatre, a gallery dedicated to Coke and pop culture, and a café where visitors can sample up to 70 different Coke products - or create their own refreshing blend.

Museum of Design:

- Atlanta's exclusively international museum focuses on cultural understanding. Through exhibitions and educational programs, the museum encourages visitors to explore cultural and artistic differences. The museum has been named an Affiliate of the Washington-based Smithsonian Institution.

Robert Ferst Center for the Performing Arts:

- Located on the beautiful Georgia Tech Campus, the Center was conceived as a brilliant showcase for the presentation of concerts, recitals, dance, film and theatre. The facility is designed to provide a wealth of diverse and enriching opportunities for both Georgia Tech students and the Atlanta community.

The Tabernacle:

- This is something to see, if only to marvel at the architecture and design! A former church, the round, multi-level facility is quite beautiful. Downstairs is the Cotton Club, with a smaller stage and more intimate surroundings.

Georgia Dome:

- With a roof that covers almost 9 acres (4 hectares), the Georgia Dome is the world's largest cable-supported dome structure. Opened in 1992, the Dome has become a central attraction for national and international sporting events and is the home of the National Football League's Atlanta Falcons.

Philips Arena:

- As host to both the National Basketball Association's Atlanta Hawks and the National Hockey League's Atlanta Thrashers, Philips Arena is the city's newest sports venue. In

addition to sporting events, Philips also hosts numerous musical events throughout the year.

The Lowe Gallery:

- Atlanta's most prestigious contemporary art gallery.

Imagine It! Children's Museum of Atlanta:

- A family-friendly space filled with interactive and educational exhibits for children age eight and under. The Museum's permanent collection consists of bright, creative, hands-on exhibits designed to spark discover and creative thinking.

Georgia Aquarium:

- The dynamic ship-shaped building features over 100,000 aquatic animals from over 500 different species. The diverse creatures swim in eight million gallons of water and are divided into five different viewing galleries. It is recommended to purchase tickets in advance.

Alan Avery Art Company:

- Original paintings, sculpture and works on paper.

J.Tribble Antiques:

- 19th- and 20th-century decorative and fine arts.

Tew Galleries:

- Classic contemporary artists.

Jimmy Carter Presidential Library and Museum:

- A display of historical memorabilia and photographs from the Carter Presidency (1976-1981) including an exact replica of the oval office, gifts received by the Carter's, Jimmy Carter's Nobel Peace Prize, and an exhibit on significant events in his life and political career.

*Within a 15-minute drive of the Hotel*

Atlanta Cyclorama:

- This painting in-the-round depicting the 1864 Battle of Atlanta was originally completed in 1886. For greater realism, features such as three-dimensional figures, sound and light effects, narration and a rotating platform have been added over the years. The steam locomotive Texas, star of the great locomotive chase of 1862, is also housed in the Cyclorama building.

Atlanta History Center:

- The Atlanta History Center has a wonderful 1929 home, The Swan House. Exhibits help visitors get to know the city and the South. The Centre also has 32 acres (13 hectares) of walking trails and gardens.

Fernbank Museum of Natural History:

- The largest facility of its kind in the Southeast brings visitors into a world of dinosaurs, artefacts, science interactives, shells, wildlife, IMAX films and more. Learn about the earth's history, the physical universe, the environment and human cultures.

Turner Field:

- Turner Field, which served as Olympic Stadium in 1996, is now home to baseball's Atlanta Braves, the 1995 World Series winners.

Zoo Atlanta:

- Zoo Atlanta houses animals from around the world in large, open enclosures that replicate their natural habitats. It is one of only two zoos in the United States that is home to giant pandas. The Ford African Rain Forest, where visitors wander through four different gorilla environments, is one of the most popular features. The Wildlife Theater offers informative and enjoyable shows, and the children's area includes a train and petting zoo.

*Within a 20-minute drive of the Hotel*

Michael C. Carlos Museum:

- This museum's collection emphasises the art and archaeology of ancient cultures, from Mediterranean and Near Eastern cultures to the art of the ancient Americas. The museum also has a growing collection of works of art on paper from the Middle Ages through the 20th century.

Chastain Park Amphitheatre:

- Revel in various entertainment options including symphony concerts and performances by popular musical acts. On most balmy summer evenings, Atlantans pack an elegant picnic dinner and head for Chastain to enjoy an evening under the stars.

HiFi Buys Amphitheatre:

- This impressive 22,000-seat venue is the place for superstar acts. There are corporate boxes as well as a hillside lawn. The amphitheatre is only open during the warm months. Given the vastness of the venue, be prepared to walk a fair distance, and over somewhat rough ground, to your automobile.

Scott Antique Market:

- The largest series of indoor antique shows in the world. (Second weekend of every month).

Six Flags Over Georgia:

- A 230-acre (93-hectare) theme park with many gravity-defying thrill rides including Goliath and Superman Ultimate Flight, as well as family-pleasers, such as the classic carousel and other attractions.

*Within a 30-minute drive of the Hotel*

Stone Mountain Park:

- The mounted figures of three Confederate heroes (Jefferson Davis, Robert E. Lee and Stonewall Jackson) form the largest high-relief sculpture on the biggest outcropping of granite in the United States. This 3,200-acre (1,300-hectare) park includes a skylift, a 19-building antebellum plantation, steam locomotive, paddlewheel riverboat and the popular summer evening laser shows.

*Within a 1-hour drive of the Hotel*

Madison, Georgia:

- General Sherman stated that Madison was a "city too beautiful to burn!" The Antebellum Capital of Georgia gives visitors a feeling of the Old South. It is a living museum containing some of America's most treasured architecture.

Callaway Gardens:

- A man-made landscape in a unique natural setting, Callaway Gardens is the perfect place for a day of adventure. Known for exquisite natural beauty, the 14,000 acres (5,700 hectares) of gardens, woodlands, lakes, wildlife and recreation offer many exciting activities.

Chateau Elan Winery:

- Set on a hilltop north of Atlanta, the Chateau Elan Winery is a beautiful replica of a 16th-century French estate, set amidst stunning views of the lush Southern countryside. The winery produces award-winning wines and offers guided tours.

Macon, Georgia:

- Step back in time to a place where people at one time strolled down a shady boulevard, softly whispering a haughty familiar tune. Attractions include the Hay House (1860 Italian Renaissance Revival Mansion) and the ever-popular Macon Cherry Blossom Festival (each Spring).

CONFERENCE FACILITIES OVERVIEW

Total Space	15,500 sq.ft. 1,440 m <sup>2</sup>
Largest Ballroom	5,105 sq.ft. 474 m <sup>2</sup>
Meet and Feed (max. capacity)	150
Breakouts	12
Banquet (max. capacity)	330
Outdoor Banquet (max. capacity)	200
Private Dining (max. capacity)	-

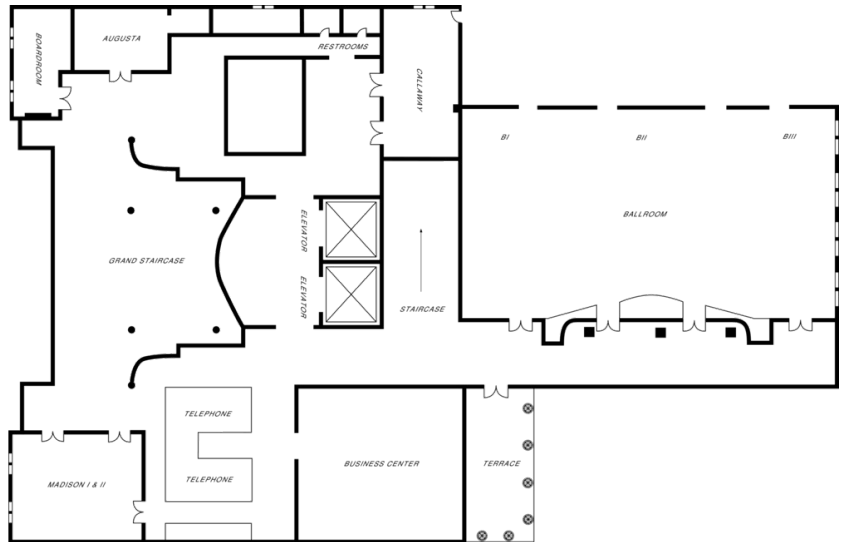
CONFERENCE FACILITIES

Four Seasons offers over 15,500 square feet (1,440 square metres) of indoor and outdoor function spaces – almost all with natural light – hosting events for 10 to 450 guests.

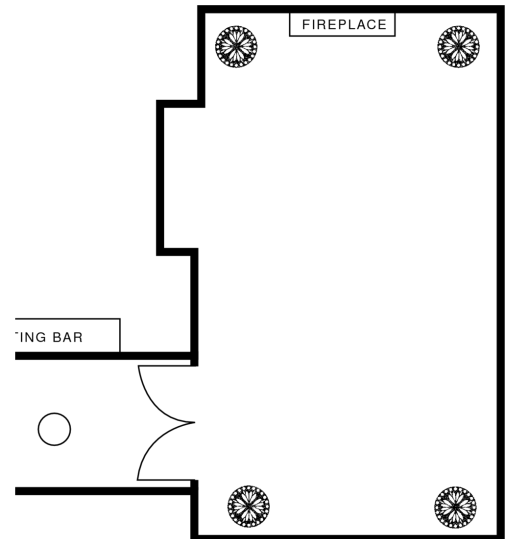
Atlanta’s only skyline-view ballroom is set on the fourth floor at the top of the lobby’s grand marble staircase. Southern tradition abounds in the third-floor Savannah Hall, complete with limestone fireplace, while the Boardroom brings serious focus with its mahogany table.

For social occasions, open-air cocktail parties glitter on the Fifth Floor Terrace, or at the tower’s pinnacle in the Fiftieth Floor Conference Room and Living Room. Four Seasons event coordinators provide comprehensive assistance, ensuring seamless perfection.

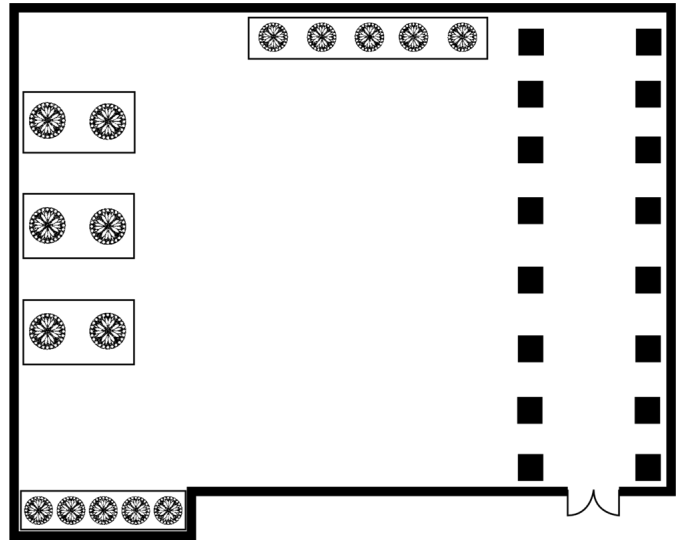
Fourth floor



Third floor



*Fifth floor*



*Fiftieth floor*



TECHNICAL ASSISTANCE

To keep pace with our clients' evolving needs, Four Seasons Hotel Atlanta continually updates its in-house audiovisual equipment.

The Hotel offers:

- Lecterns
- LCD projectors
- Drape kits
- Video projection and recording
- Wired or wireless Internet access in meeting rooms

MUSIC AND ENTERTAINMENT

All types of music and entertainment can be provided for your function. The Hotel's Conference Service Managers will be happy to assist you.

#### RECEIVING AND MAINTENANCE

The Hotel features a full-service shipping and receiving office. All packages should be sent to the attention of the Conference Service Manager along with your conference name and date. They will be stored in a separate conference storage area. Limited space is available for the storage of large items. Please time shipping to the date of your arrival.

##### *Receiving dock*

Please contact your Conference Service Manager to make special arrangements for delivery of oversized packages or environmentally sensitive equipment.

##### *Post-conference shipping*

Shipping of post-conference materials may be coordinated through the Banquet Department.

##### *Maintenance*

The Engineering Department is available 24 hours a day for general assistance with lighting, room temperature control and minor repairs.

#### DESTINATION MANAGEMENT

Your Conference Services Manager can help accommodate your group's special requests. For detailed information, please contact the Hotel directly. In addition, we recommend the following destination management companies:

##### Presenting Atlanta

Telephone: (404) 231-0200

##### Atlanta Arrangements

Telephone: (404) 443-5959

#### BUSINESS SERVICES

Around the clock, Four Seasons can assist you with business, entertainment or travel arrangements through the Business Center and resourceful, multilingual Concierge.

- 24-hour business services
- Audiovisual equipment
- Computers
- Express check-in/check-out
- Secretarial service
- Translation and interpretation service
- Wired or wireless Internet access in meeting rooms

#### SPOUSE PROGRAMMES

Four Seasons Hotel Atlanta offers a variety of activities that will interest the spouses of meeting participants, and the Concierge will provide detailed information on specially tailored spouse programs. Some ideas include:

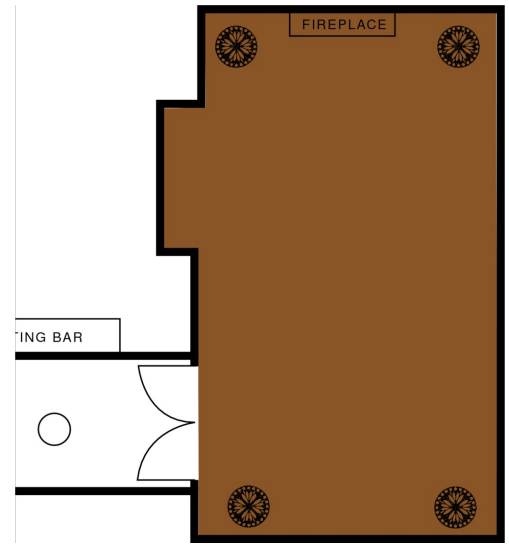
- A day of antique shopping at nearby renowned districts, with lunch at historic Swan House at the Atlanta History Center
- A tour of Madison, known for its Georgian Revival homes, with a traditional Southern lunch at the historic Blue Willow Inn in Social Circle, Georgia
- Private tours of the High Museum collections

**SAVANNAH HALL**

Dimensions	50 x 24 ft 15.3 x 7.3 m
Size	1200 sq.ft. 111 m <sup>2</sup>
Height	13.5 ft 4.2 m

*Capacities*

Classroom	45
Hollow square	44
U Shape	38
Theatre	90
Reception	150
Banquet Rounds	100

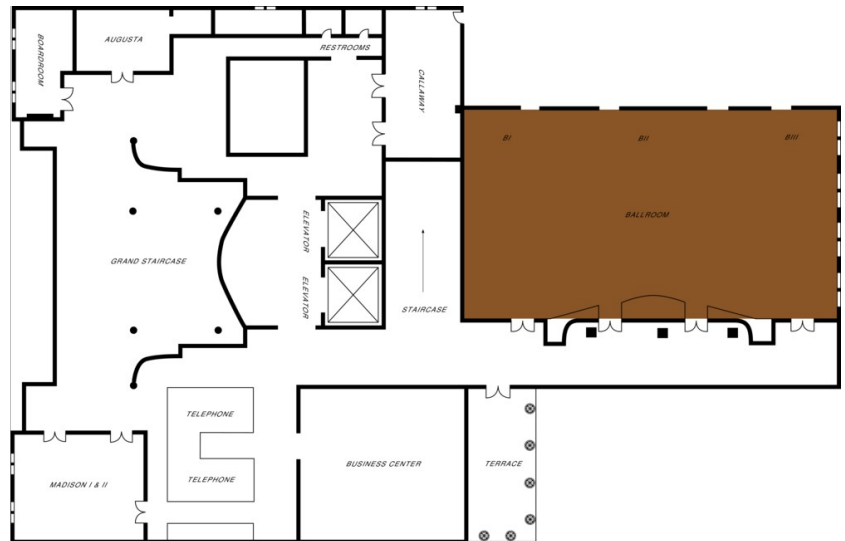


**BALLROOM**

Dimensions	97 x 55 ft 30 x 18 m
Size	5,105 sq.ft. 474 m <sup>2</sup>
Height	12 ft 3.6 m

*Capacities*

Classroom	300
Hollow square	110
U Shape	100
Theatre	500
Reception	500
Banquet Rounds	320



**BALLROOM I**

Dimensions	22 x 55 ft 6.7 x 16.8 m
Size	1,210 sq.ft. 112 m <sup>2</sup>
Height	12 ft 3.6 m

*Capacities*

Classroom	52
Hollow square	44
U Shape	40
Theatre	120
Reception	130
Banquet Rounds	90



**BALLROOM II**

Dimensions	46 x 50 ft
	14 x 15 m
Size	2,300 sq.ft.
	214 m <sup>2</sup>
Height	12 ft
	3.6 m

*Capacities*

Classroom	108
Hollow square	60
U Shape	50
Theatre	225
Reception	230
Banquet Rounds	180

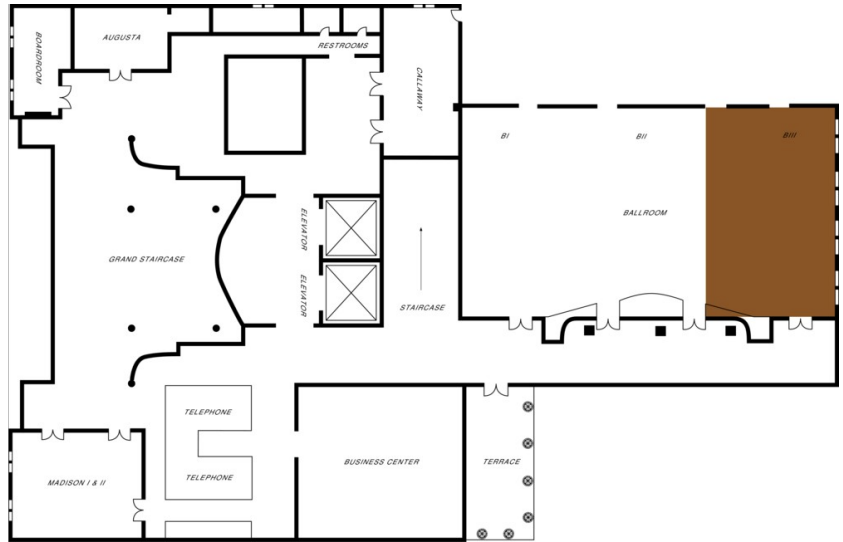


**BALLROOM III**

Dimensions	29 x 55 ft
	8.8 x 16.8 m
Size	1,595 sq.ft.
	148 m <sup>2</sup>
Height	12 ft
	3.6 m

*Capacities*

Classroom	96
Hollow square	50
U Shape	44
Theatre	160
Reception	140
Banquet Rounds	130



**CALLAWAY ROOM**

Dimensions	20 x 38 ft
	6.2 x 11.3 m
Size	760 sq.ft.
	70 m <sup>2</sup>
Height	9.1 ft
	2.8 m

*Capacities*

Classroom	40
Hollow square	30
U Shape	25
Theatre	70
Reception	70
Banquet Rounds	50

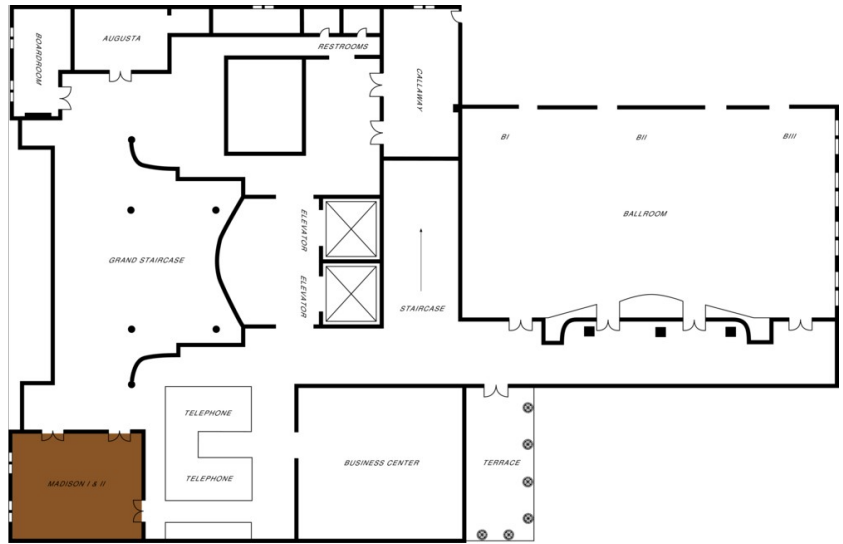


**MADISON ROOM I AND II**

Dimensions	27 x 38 ft 8.2 x 11.6 m
Size	1,026 sq.ft. 95 m <sup>2</sup>
Height	13.6 ft 4.2 m

*Capacities*

Classroom	50
Hollow square	40
U Shape	32
Theatre	100
Reception	100
Banquet Rounds	60

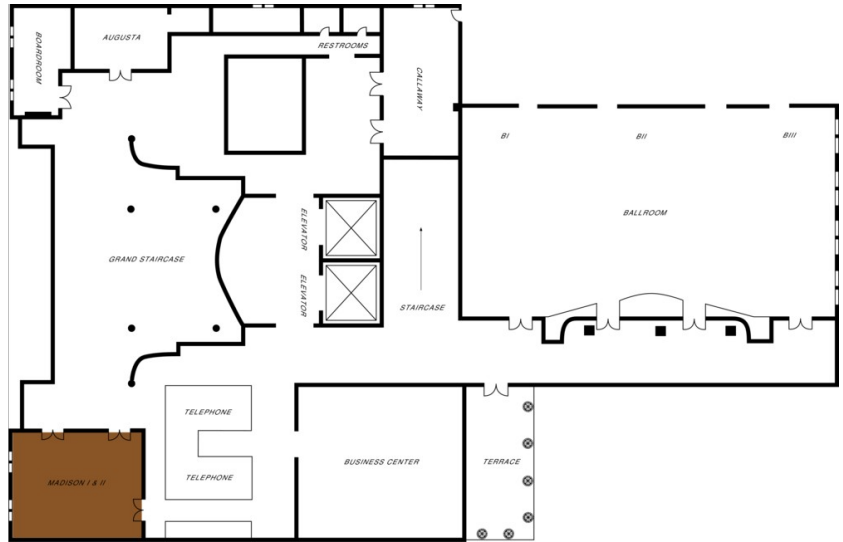


**MADISON ROOM I**

Dimensions	27 x 19 ft 8.2 x 5.8 m
Size	513 sq.ft. 48 m <sup>2</sup>
Height	13.6 ft 4.5 m

*Capacities*

Classroom	24
Hollow square	18
U Shape	16
Theatre	50
Reception	50
Banquet Rounds	30

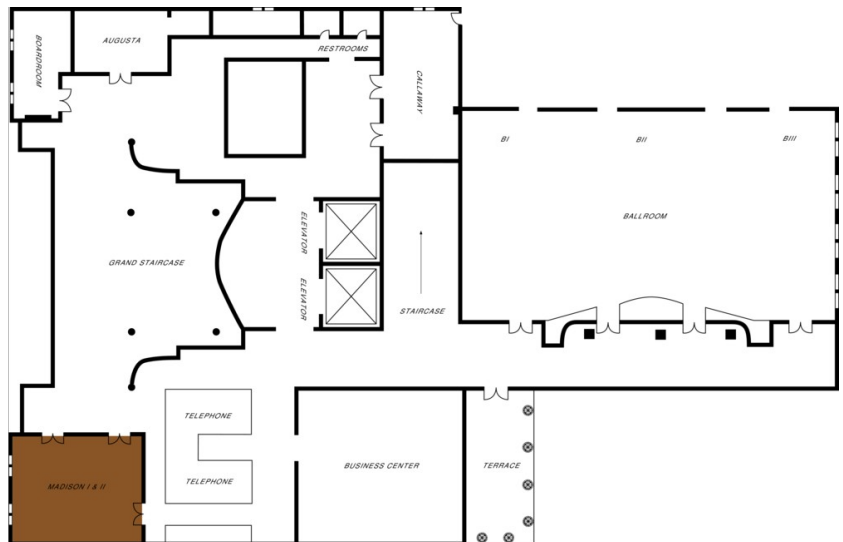


**MADISON ROOM II**

Dimensions	27 x 19 ft 8.2 x 5.8 m
Size	513 sq.ft. 48 m <sup>2</sup>
Height	13.5 ft 4.2 m

*Capacities*

Classroom	24
Hollow square	18
U Shape	16
Theatre	50
Reception	50
Banquet Rounds	36



**AUGUSTA ROOM**

Dimensions 21.6 x 19 ft  
6.6 x 5.8 m  
Size 408 sq.ft.  
38 m<sup>2</sup>  
Height 13.6 ft  
4.2 m

*Capacities*

Classroom 10  
Hollow square 18  
U Shape 16  
Theatre 45  
Reception 30  
Banquet Rounds 30

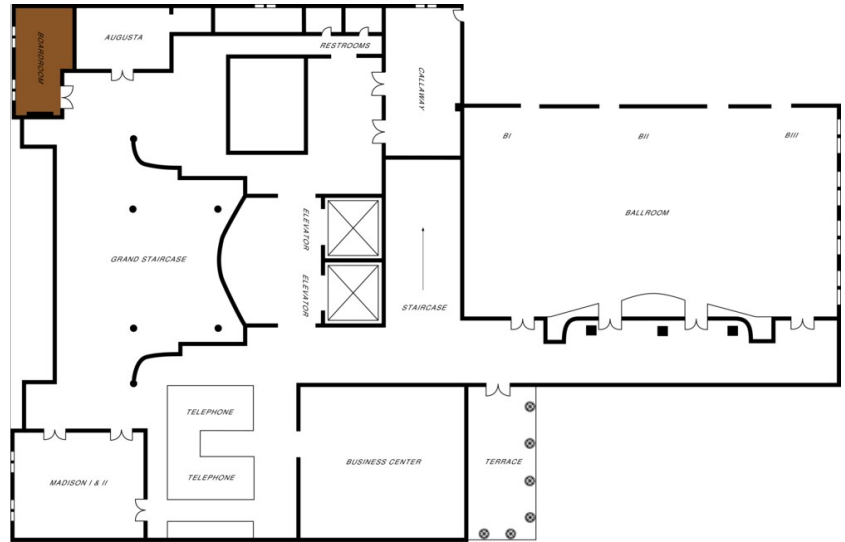


**BOARDROOM**

Dimensions 29 x 13 ft  
8.9 x 4 m  
Size 377 sq.ft.  
35 m<sup>2</sup>  
Height 9 ft  
2.8 m

*Capacities*

Boardroom 12

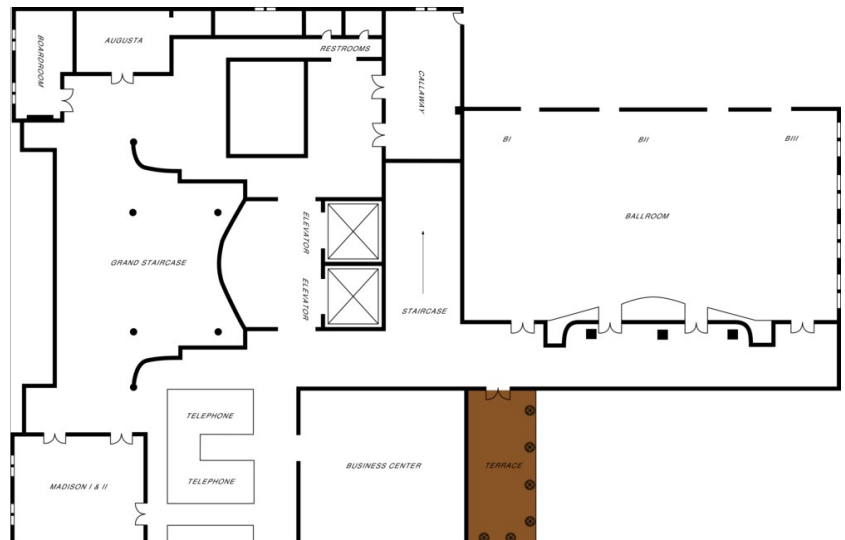


**FOURTH FLOOR TERRACE**

Dimensions 42 x 22 ft  
12.8 x 6.7 m  
Size 924 sq.ft.  
86 m<sup>2</sup>  
Height -  
-

*Capacities*

Reception 50  
Banquet Rounds 40

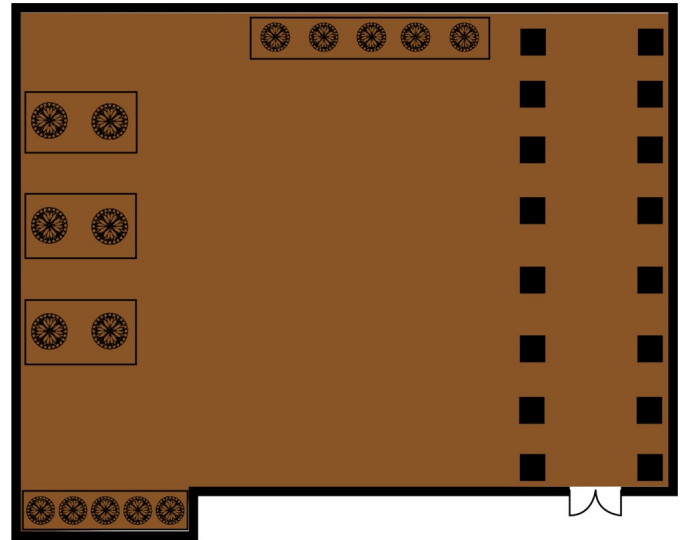


**FIFTH FLOOR TERRACE**

Dimensions 100 x 75 ft  
30.5 x 22.9 m  
Size 7,500 sq.ft.  
697 m<sup>2</sup>  
Height -  
-

*Capacities*

Reception 250  
Banquet Rounds 250



**FIFTIETH FLOOR CONFERENCE ROOM**

Dimensions 17.3 x 25.9 ft  
5.3 x 7.9 m  
Size 444 sq.ft.  
41 m<sup>2</sup>  
Height 12 ft  
3.7 m

*Capacities*

Classroom 12  
Theatre 30  
Reception 20  
Banquet Rounds 20  
Boardroom 16

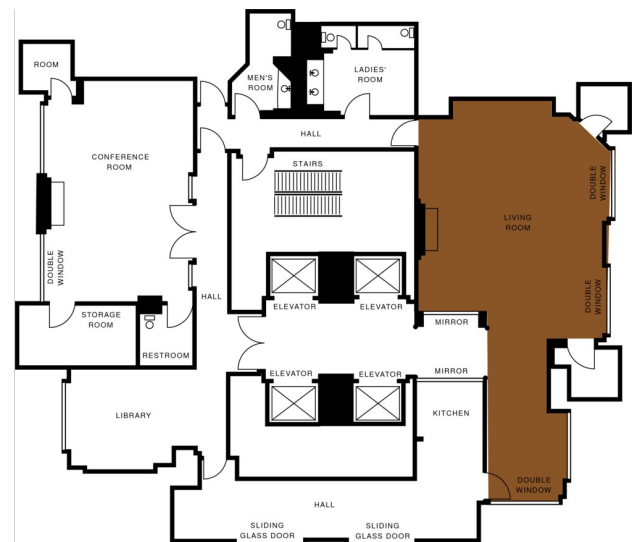


**FIFTIETH FLOOR LIVING ROOM**

Dimensions 22.2 x 24.3 ft  
6.8 x 7.4 m  
Size 538 sq.ft.  
50 m<sup>2</sup>  
Height -  
-

*Capacities*

Classroom 18  
Hollow square 20  
U Shape 18  
Theatre 50  
Reception 50  
Banquet Rounds 40



### GUEST ROOMS, SUITES AND PRIVATE RESIDENCES OVERVIEW

Positioned on the first 19 floors of a 50-storey hotel and residential tower, Four Seasons Hotel Atlanta offers 244 ultra-spacious guest rooms, including 18 suites. Fresh, elegant and glowing with sunshine, interiors are decorated in welcoming yellow, cinnamon and gold tones, featuring large chaises longues. Picture-window views highlight Midtown or Downtown.

Leading-edge amenities include wired/wireless high-speed Internet access, stereo with CD player and LCD television with DVD player. Signature Four Seasons marble bathrooms include a deep bathtub and separate glass-enclosed shower.

Room Category	#	Beds	Size (sq ft)	View (m <sup>2</sup> )	View
- Terrace City-View Room	14	1 King or 2 twin	450	42	Downtown or Midtown Atlanta
- Premier City-View Room	40	1 King	450	42	Sweeping views of downtown or Midtown Atlanta
- Deluxe City-View Room	95	1 King or 2 twin	450	42	Midtown Atlanta
- Superior City-View Room	43	1 King or 2 twin	450	42	Downtown or Midtown Atlanta
- City-View Room	34	1 King or 2 twin	450	42	Residential area and the city
- Accessible Terrace City-View Room		1 King	450	42	Downtown or Midtown Atlanta
- Accessible Deluxe City-View Room		1 King	450	42	Midtown Atlanta
- Accessible City-View Room		1 King or 2 twin	450	42	Residential area and the city
- Accessible Superior City-View Room with Roll-in Shower		1 King	450	42	Residential area and the city
- Accessible Superior City-View Room		1 King	450	42	Downtown or Midtown Atlanta
- Presidential Suite	1	1 King	2,200	204	Panoramic view of Midtown Atlanta
- Luxury Suite	2	1 King	1,000	92	Panoramic view of downtown Atlanta
- Corner Suite	2	1 King	900	84	Panoramic views of downtown and Midtown Atlanta
- One-Bedroom Suite	13	1 King	950	88	Downtown Atlanta
- Accessible One-Bedroom Suite		1 King	950	88	Downtown Atlanta

#### Guest Room Overview

The 226 Four Seasons guest rooms offer bright high-tech comfort with ascending views from the 5th through the 18th floors. Superior City-View Rooms are on middle floors and Deluxe City-View Rooms are on upper floors. Available on most floors, Premier City-View Rooms are corner rooms with large picture windows on two sides. Terrace City-View Rooms on the fifth floor each boast a private terrace with views of Downtown or Midtown.

#### Suites Overview

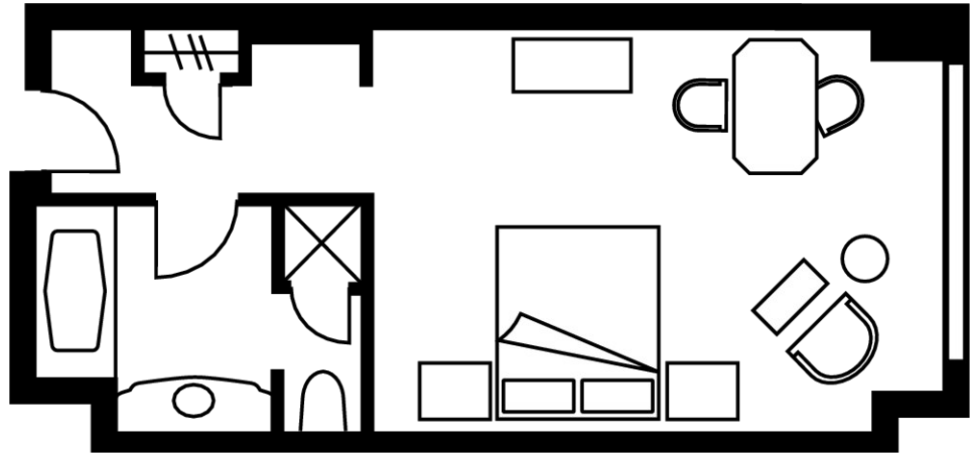
Four Seasons offers a collection of 18 spacious suites – adding privacy, discretion and comfort with one or two bedrooms. L-shaped One-Bedroom Suites have living and

sleeping quarters separated by solid wood doors. One-bedroom Corner Suites offer two panoramic views from the 19th floor. Also on the 19th floor, Luxury Suites are uniquely decorated, with the option of one or two bedrooms. The 19th-floor Presidential Suite offers a memorable setting for grand dinners or private receptions. Features include a palatial living room with entertainment centre and a large working desk; a generous dining area for 12, served from a complete kitchen; an optional second bedroom; and a lavish master bedroom with a large walk-in closet and a full-sized jetted tub in the bathroom.

**DELUXE CITY-VIEW ROOM**

Number 95  
Beds King or two twin beds  
Size 450 sq ft  
42 m<sup>2</sup>

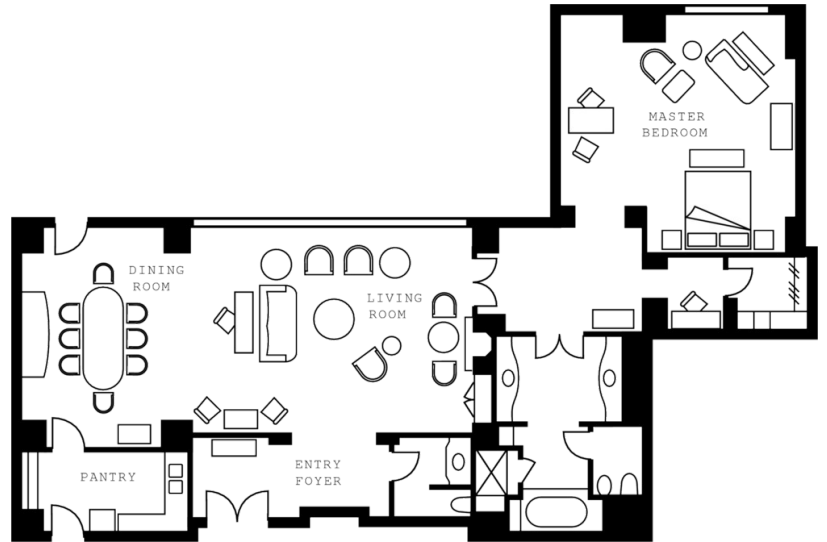
*Location*  
11th to 19th floors  
*View*  
Midtown Atlanta



**PRESIDENTIAL SUITE**

Number 1  
Beds King bed  
Size 2,200 sq ft  
204 m<sup>2</sup>

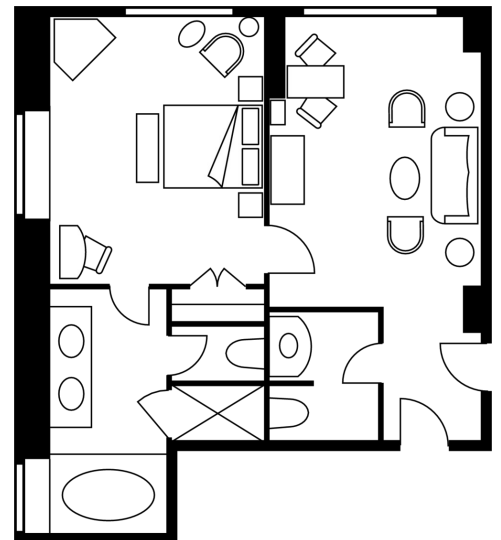
*Location*  
19th floor  
*View*  
Panoramic view of Midtown Atlanta



**LUXURY SUITE**

Number 2  
Beds King bed  
Size 1,000 sq ft  
92 m<sup>2</sup>

*Location*  
19th floor  
*View*  
Panoramic view of downtown Atlanta



ONE-BEDROOM SUITE

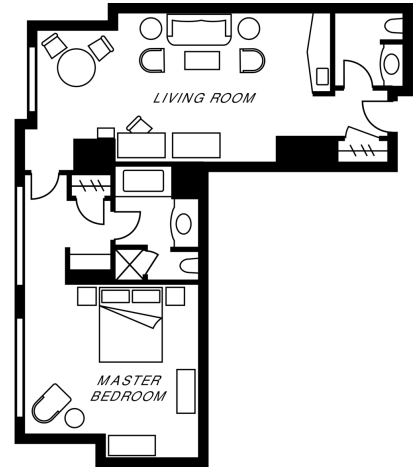
Number 13  
Beds King bed  
Size 950 sq ft  
88 m<sup>2</sup>

Location

6th to 19th floors

View

Downtown Atlanta



ONE-BEDROOM SUITE

#### AMENITIES

- All news cable network
- CD clock radio
- Complimentary newspaper
- Down pillows
- DVD player
- Fax machine on request
- Hair dryer
- Humidifier and air ioniser on request
- Hypo-allergenic pillows on request
- In-room safe
- Iron and ironing board
- Lighted make-up/shaving mirror
- Multi-line telephone(s) with voicemail
- Refrigerated private bar
- Thick terry bathrobes
- Twice-daily housekeeping service
- Web/interactive television
- Wired or wireless Internet access

#### GUEST SERVICES

- 24-hour In-Room Dining
- 24-hour laundry/dry-cleaning/pressing
- 24-hour multilingual Concierge
- CD/DVD library
- Complimentary overnight shoeshine
- Gift shop
- Limousine service
- Non-smoking rooms
- One-hour pressing
- Umbrellas
- Valet parking

#### VIP GIFTS AND WELCOME AMENITY

Special arrangements can be made for clients to purchase welcome amenities for their VIP guests.

---

**DINING HOURS OF OPERATION**

*Park 75*

*Breakfast*

Sunday 7:00 am - 10:00 am  
Monday to Saturday 6:30 am - 11:00 am

*Brunch*

Sunday 10:00 am - 2:00 pm

*Lunch*

Monday to Saturday 11:30 am - 2:00 pm  
Sunday 3:00 pm - 4:00 pm

*Park 75 Lounge and Terrace*

Sunday 4:00 pm - midnight  
Monday to Saturday 4:00 pm - 1:00 am

*In-Room Dining*

*Breakfast*

Every day 6:00 am - 11:30 am

*All-day dining*

Every day 11:30 am - 11:00 pm

*Late-night dining*

Every day 11:00 pm - 6:00 am

---

**DINING**

One of Atlanta's favourite destinations for dining and cocktails, Four Seasons Hotel Atlanta offers a lively atmosphere that attracts local residents and visitors alike. The focus is on the third floor, where Park 75 offers three distinctive settings – Restaurant, Lounge and Terrace – overlooking the lobby's dramatic three-storey atrium.

**RESTAURANTS**

*Park 75*

Park 75's marriage of various styles and rich textures produces a refreshing ambience. Sunlight mingles with the warm glow from custom light fixtures and iron candelabras, while a large commissioned watercolour evokes a sense of garden tranquillity.

- Cuisine: Southern steak
- Special features: Chef's Tables in the kitchen
- Size: 1,760 sq ft / 163 m<sup>2</sup>
- Indoor seating: 72

**LOUNGES**

*Park 75 Lounge and Terrace*

Park 75 Lounge is Atlanta's hip and popular "midtown living room." Locals and travellers alike will experience exceptional service while unwinding in this cosy and intimate setting.

- Cuisine: Southern steak
- Special features: Seasonal cocktails
- Size: 1,760 sq ft / 756 m<sup>2</sup>
- Indoor seating: 54; plus 28 at the indoor terrace

## RECREATION FACILITIES

Four Seasons adds to the pleasure of time in Atlanta by offering all the amenities of a city resort. The Spa provides a tranquil setting for massages and skin care. The Olympic-sized indoor pool is adjoined by an outdoor sun terrace. A workout in the fitness centre can easily extend to a jog or power-walk through nearby Piedmont Park. The Concierge can make all the arrangements for a game of golf or tennis.

### SPA SERVICES

The Spa at Four Seasons Hotel Atlanta reflects the ultimate in luxury and serenity, and is ideal for your spa getaway or spa weekend. The tranquil setting allows your stresses to melt away and promises to replenish your total being.

- Size: 7,790 sq ft / 724 m<sup>2</sup>
- Number of treatment rooms: 10, including the nail suite
- Products: Arcona, Carita, Bulgari, Kai, The Spa Signature Products, Sodashi

### FITNESS FACILITIES

Relax, tone and challenge yourself in Midtown Atlanta's most luxurious fitness centre. Men's and women's locker facilities each include their own saunas and steam rooms. The fitness studios include a complete range of free weights and extensive cardiovascular equipment.

- Size: 4,210 sq ft / 391 m<sup>2</sup>

### POOL

#### *Main Pool*

In beautiful neo-classic surroundings, within our state-of-the-art health club, you'll find an indoor saline lap pool with sun terrace and whirlpool bath. Each of the men's and women's locker rooms has its own steam and sauna.

Within easy reach of your Four Seasons Hotel Atlanta guest room or suite are other options for sports or active enjoyment. For further ideas or details, our Concierge is always pleased to advise and assist you.

### GOLF

#### *The Heritage Golf Club*

This Mike Young-designed course offers you a rare blend of time-honoured practices from the past and the natural beauty of the land to create a new tradition in golf for the Atlanta area. With the highest slope rating in the state, The Heritage features a 23-acre (9-hectare) lighted practice range with balata range balls, and two practice putting greens and bunkers.

#### *Stone Mountain Park – Stonemont*

The golf courses at Stone Mountain Park have been challenging golfers for a quarter of a century. The Stonemont course, designed by Robert Trent Jones II, challenges golfers with its long narrow fairways.

#### *Stone Mountain Park – Lakemont/Woodmont*

The golf courses at Stone Mountain Park have been challenging golfers for a quarter of a

century. The Lakemont/Woodmont course, skirting Stone Mountain Lake, was designed by John Lafoy. It not only brings water into play, but also takes golfers over hilly terrain, massive granite boulders and cliffs.

*Wolf Creek Golf Club*

Wolf Creek has earned a reputation of being one of the toughest golf tracks in the city. This Mike Young-designed course incorporates fairways that meander through low rolling hills, as well as two “virtual” island green par threes, which require keen aim to reach their greens.

*St. Marlo Golf and Country Club*

Designed by Dennis Griffiths, the course is sure to challenge players of all levels. Water comes into play on nine holes with artistic waterfalls, distinctive stonewalls and beautiful hardwoods, all designed to flow with the natural, rolling terrain of the land.

*Crooked Creek Golf Club*

A championship 18-hole Michael Riley-designed course offering a challenge in both distance and accuracy. Numerous bunkers come into play on nearly every hole, while water is present on six holes.

LOCAL ACTIVITIES

*Jogging*

Jog through Piedmont Park or Midtown, or through the Georgia Tech campus. Two to six mile (three to ten kilometre) jogging routes are available. Jogging maps are available in each guest room, or visit the Concierge in the lobby for a map and suggested jogging routes.

*Tennis*

Within a short drive are three outdoor asphalt courts that are part of the health club facility at the Atlanta Hilton & Towers.

www.fourseasons.com/atlanta

Rooms	Dimensions		Size		Height		Classroom	Hollow square	U-shape	Theatre	Reception	Banquet rounds	Conference/boardroom
	(ft)	(m)	(sq ft)	(m2)	(ft)	(m)							
- Savannah Hall	50 x 24	15.3 x 7.3	1200	111	13.5	4.2	45	44	38	90	150	100	40
- Ballroom	97 x 55	30 x 18	5,105	474	12	3.6	300	110	100	500	500	320	90
- Ballroom I	22 x 55	6.7 x 16.8	1,210	112	12	3.6	52	44	40	120	130	90	40
- Ballroom II	46 x 50	14 x 15	2,300	214	12	3.6	108	60	50	225	230	180	48
- Ballroom III	29 x 55	8.8 x 16.8	1,595	148	12	3.6	96	50	44	160	140	130	40
- Callaway Room	20 x 38	6.2 x 11.3	760	70	9.1	2.8	40	30	25	70	70	50	24
- Madison Room I and II	27 x 38	8.2 x 11.6	1,026	95	13.6	4.2	50	40	32	100	100	60	32
- Madison Room I	27 x 19	8.2 x 5.8	513	48	13.6	4.5	24	18	16	50	50	30	20
- Madison Room II	27 x 19	8.2 x 5.8	513	48	13.5	4.2	24	18	16	50	50	36	20
- Augusta Room	21.6 x 19	6.6 x 5.8	408	38	13.6	4.2	10	18	16	45	30	30	18
- Boardroom	29 x 13	8.9 x 4	377	35	9	2.8	-	-	-	-	-	-	12
- Fourth Floor Terrace	42 x 22	12.8 x 6.7	924	86	-	-	-	-	-	-	50	40	-
- Fifth Floor Terrace	100 x 75	30.5 x 22.9	7,500	697	-	-	-	-	-	-	250	250	-
- Fiftieth Floor Conference Room	17.3 x 25.9	5.3 x 7.9	444	41	12	3.7	12	-	-	30	20	20	16
- Fiftieth Floor Living Room	22.2 x 24.3	6.8 x 7.4	538	50	-	-	18	20	18	50	50	40	18